

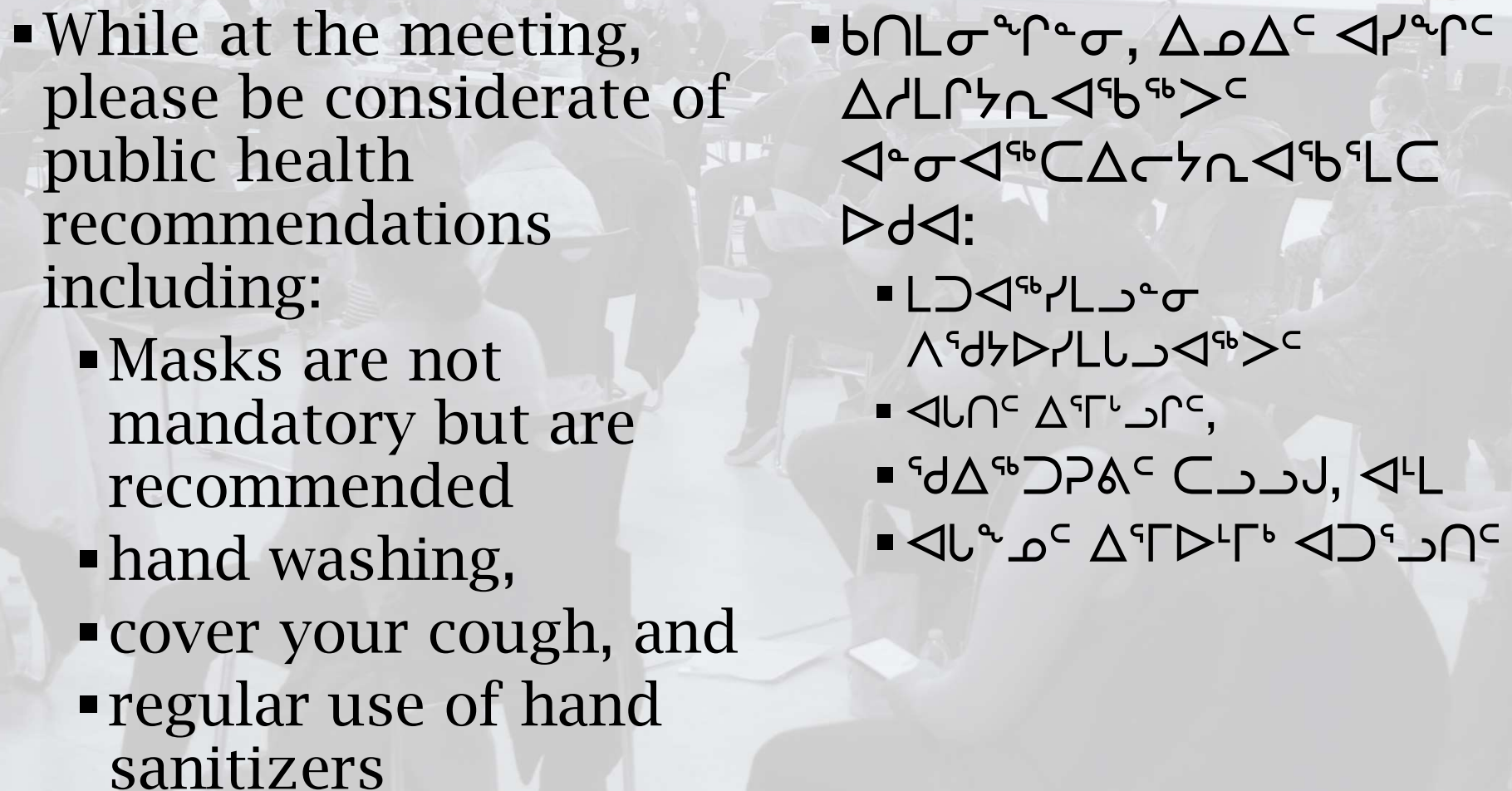
▷ ⚡ ƒ^b C_n ◁ ƒ^a Δ^a ℓ

Baker Lake / ᑲᓴᓂᐅᐱᑦᓴ



Public Health Recommendations:

Δ_μΔ^c < Δ^aσ<Δ^bΓΔ_νσ^aΓ_μ^c < Δ^dδ<Δ^eγ<Δ^fλ<Δ^gκ<Δ^hν<Δⁱμ<Δ^jτ<Δ^kρ<Δ^lσ<Δ^mω<Δⁿπ<Δ^oϕ<Δ^pχ<Δ^qψ<Δ^rζ<Δ^sη<Δ^tθ<Δ^uι<Δ^vκ<Δ^wλ<Δ^xμ<Δ^yν<Δ^zξ<Δ^{aa}ο<Δ^{ab}π<Δ^{ac}ρ<Δ^{ad}σ<Δ^{ae}τ<Δ^{af}υ<Δ^{ag}φ<Δ^{ah}χ<Δ^{ai}ψ<Δ^{aj}ζ<Δ^{ak}η<Δ^{al}θ<Δ^{am}ι<Δ^{an}κ<Δ^{ao}λ<Δ^{ap}μ<Δ^{aq}ν<Δ^{ar}ξ<Δ^{as}ο<Δ^{at}π<Δ^{au}ρ<Δ^{av}σ<Δ^{aw}τ<Δ^{ax}υ<Δ^{ay}φ<Δ^{az}χ<Δ^{ba}ψ<Δ^{bb}ζ<Δ^{bc}η<Δ^{bd}θ<Δ^{be}ι<Δ^{bf}κ<Δ^{bg}λ<Δ^{bh}μ<Δ^{bi}ν<Δ^{bj}ξ<Δ^{bk}ο<Δ^{bl}π<Δ^{bm}ρ<Δ^{bn}σ<Δ^{bo}τ<Δ^{bp}υ<Δ^{bq}φ<Δ^{br}χ<Δ^{bs}ψ<Δ^{bt}ζ<Δ^{bu}η<Δ^{bv}θ<Δ^{bw}ι<Δ^{bx}κ<Δ^{by}λ<Δ^{bz}μ<Δ^{ca}ν<Δ^{cb}ξ<Δ^{cc}ο<Δ^{cd}π<Δ^{ce}ρ<Δ^{cf}σ<Δ^{cg}τ<Δ^{ch}υ<Δ^{ci}φ<Δ^{cj}χ<Δ^{ck}ψ<Δ^{cl}ζ<Δ^{cm}η<Δ^{cn}θ<Δ^{co}ι<Δ^{cp}κ<Δ^{cq}λ<Δ^{cr}μ<Δ^{cs}ν<Δ^{ct}ξ<Δ^{cu}ο<Δ^{cv}π<Δ^{cw}ρ<Δ^{cx}σ<Δ^{cy}τ<Δ^{cz}υ<Δ^{da}φ<Δ^{db}χ<Δ^{dc}ψ<Δ^{dd}ζ<Δ^{de}η<Δ^{df}θ<Δ^{dg}ι<Δ^{dh}κ<Δ^{di}λ<Δ^{dj}μ<Δ^{dk}ν<Δ^{dl}ξ<Δ^{dm}ο<Δ^{dn}π<Δ^{do}ρ<Δ^{dp}σ<Δ^{dq}τ<Δ^{dr}υ<Δ^{ds}φ<Δ^{dt}χ<Δ^{du}ψ<Δ^{dv}ζ<Δ^{dw}η<Δ^{dx}θ<Δ^{dy}ι<Δ^{dz}κ<Δ^{ea}λ<Δ^{eb}μ<Δ^{ec}ν<Δ^{ed}ξ<Δ^{ee}ο<Δ^{ef}π<Δ^{eg}ρ<Δ^{eh}σ<Δ^{ei}τ<Δ^{ej}υ<Δ^{ek}φ<Δ^{el}χ<Δ^{em}ψ<Δ^{en}ζ<Δ^{eo}η<Δ^{ep}θ<Δ^{eq}ι<Δ^{er}κ<Δ^{es}λ<Δ^{et}μ<Δ^{eu}ν<Δ^{ev}ξ<Δ^{ew}ο<Δ^{ex}π<Δ^{ey}ρ<Δ^{ez}σ<Δ^{fa}τ<Δ^{fb}υ<Δ^{fc}φ<Δ^{fd}χ<Δ^{fe}ψ<Δ^{ff}ζ<Δ^{fg}η<Δ^{fh}θ<Δ^{fi}ι<Δ^{fj}κ<Δ^{fk}λ<Δ^{fl}μ<Δ^{fm}ν<Δ^{fn}ξ<Δ^{fo}ο<Δ^{fp}π<Δ^{fq}ρ<Δ^{fr}σ<Δ^{fs}τ<Δ^{ft}υ<Δ^{fu}φ<Δ^{fv}χ<Δ^{fw}ψ<Δ^{fx}ζ<Δ^{fy}η<Δ^{fz}θ<Δ^{ga}ι<Δ^{gb}κ<Δ^{gc}λ<Δ^{gd}μ<Δ^{ge}ν<Δ^{gf}ξ<Δ^{gg}ο<Δ^{gh}π<Δ^{gi}ρ<Δ^{gj}σ<Δ^{gk}τ<Δ^{gl}υ<Δ^{gm}φ<Δ^{gn}χ<Δ^{go}ψ<Δ^{gp}ζ<Δ^{gq}η<Δ^{gr}θ<Δ^{gs}ι<Δ^{gt}κ<Δ^{gu}λ<Δ^{gv}μ<Δ^{gw}ν<Δ^{gx}ξ<Δ^{gy}ο<Δ^{gz}π<Δ^{ha}ρ<Δ^{hb}σ<Δ^{hc}τ<Δ^{hd}υ<Δ^{he}φ<Δ^{hf}χ<Δ^{hg}ψ<Δ^{hh}ζ<Δ^{hi}η<Δ^{hj}θ<Δ^{hk}ι<Δ^{hl}κ<Δ^{hm}λ<Δ^{hn}μ<Δ^{ho}ν<Δ^{hp}ξ<Δ^{hq}ο<Δ^{hr}π<Δ^{hs}ρ<Δ^{ht}σ<Δ^{hu}τ<Δ^{hv}υ<Δ^{hw}φ<Δ^{hx}χ<Δ^{hy}ψ<Δ^{hz}ζ<Δ^{ia}η<Δ^{ib}θ<Δ^{ic}ι<Δ^{id}κ<Δ^{ie}λ<Δ^{if}μ<Δ^{ig}ν<Δ^{ih}ξ<Δⁱⁱο<Δ^{ij}π<Δ^{ik}ρ<Δ^{il}σ<Δ^{im}τ<Δⁱⁿυ<Δ^{io}φ<Δ^{ip}χ<Δ^{iq}ψ<Δ^{ir}ζ<Δ^{is}η<Δ^{it}θ<Δ^{iu}ι<Δ^{iv}κ<Δ^{iw}λ<Δ^{ix}μ<Δ^{iy}ν<Δ^{iz}ξ<Δ^{ja}ο<Δ^{jb}π<Δ^{jc}ρ<Δ^{jd}σ<Δ^{je}τ<Δ^{jf}υ<Δ^{jj}φ<Δ^{jk}χ<Δ^{jl}ψ<Δ^{jm}ζ<Δ^{jn}η<Δ^{jo}θ<Δ^{jp}ι<Δ^{jq}κ<Δ^{jr}λ<Δ^{js}μ<Δ^{jt}ν<Δ^{ju}ξ<Δ^{jv}ο<Δ^{jw}π<Δ^{jb}ρ<Δ^{jd}σ<Δ^{je}τ<Δ^{jf}υ<Δ^{jj}φ<Δ^{jk}χ<Δ^{jl}ψ<Δ^{jm}ζ<Δ^{jn}η<Δ^{jo}θ<Δ^{jp}ι<Δ^{jq}κ<Δ^{jr}λ<Δ^{js}μ<Δ^{jt}ν<Δ^{ju}ξ<Δ^{jv}ο<Δ^{jw}π<Δ^{ka}σ<Δ^{kb}τ<Δ^{kc}υ<Δ^{kd}φ<Δ^{ke}χ<Δ^{kf}ψ<Δ^{kg}ζ<Δ^{kh}η<Δ^{ki}θ<Δ^{kl}ι<Δ^{km}κ<Δ^{kn}λ<Δ^{ko}μ<Δ^{kp}ν<Δ^{ks}ξ<Δ^{kt}ο<Δ^{ku}π<Δ^{kv}ρ<Δ^{kw}σ<Δ^{kx}τ<Δ^{ky}υ<Δ^{kz}φ<Δ^{la}χ<Δ^{lb}ψ<Δ^{lc}ζ<Δ^{ld}η<Δ^{le}θ<Δ^{lf}ι<Δ^{lg}κ<Δ^{lh}λ<Δ^{li}μ<Δ^{lj}ν<Δ^{lk}ξ<Δ^{ll}ο<Δ^{lm}π<Δ^{ln}ρ<Δ^{lo}σ<Δ^{lp}τ<Δ^{ll}υ<Δ^{lm}φ<Δ^{ln}χ<Δ^{lo}ψ<Δ^{lp}ζ<Δ^{lm}η<Δ^{ln}θ<Δ^{lp}ι<Δ^{lm}κ<Δ^{ln}λ<Δ^{lp}μ<Δ^{lm}ν<Δ^{lp}ξ<Δ^{lm}ο<Δ^{lp}π<Δ^{lm}ρ<Δ^{lp}σ<Δ^{lm}τ<Δ^{lm}υ<Δ^{lm}φ<Δ^{lm}χ<Δ^{lm}ψ<Δ^{lm}ζ<Δ^{lm}η<Δ^{lm}θ<Δ^{lm}ι<Δ^{lm}κ<Δ^{lm}λ<Δ^{lm}μ<Δ^{lm}ν<Δ^{lm}ξ<Δ^{lm}ο<Δ^{lm}π<Δ^{lm}ρ<Δ

- 
- While at the meeting,
please be considerate of
public health
recommendations
including:
 - Masks are not
mandatory but are
recommended
 - hand washing,
 - cover your cough, and
 - regular use of hand
sanitizers
 - ከገጠናው ውስጥ ሲሆን፣ የቀደምት ምክር ቤቱ አመልካችነትን በማሳደግ፣
የቅድመ-ጥያቄው መሪዎችን በማከተል፡
 - ለቅድመ-ጥያቄው መሪዎች ማጋለጥ አይገባም።
 - ለአጠቃላይ ምክር ቤቱ ማጋለጥ፣
 - የቅድመ-ጥያቄው መሪዎችን በማከተል፣ ለቅድመ-ጥያቄው መሪዎች
 - ለቅድመ-ጥያቄው መሪዎች ማጋለጥ አይገባም።



NUNAVUT IMPACT REVIEW BOARD
NUNAVUMI AVATILIKIYIN KATIMAYIN

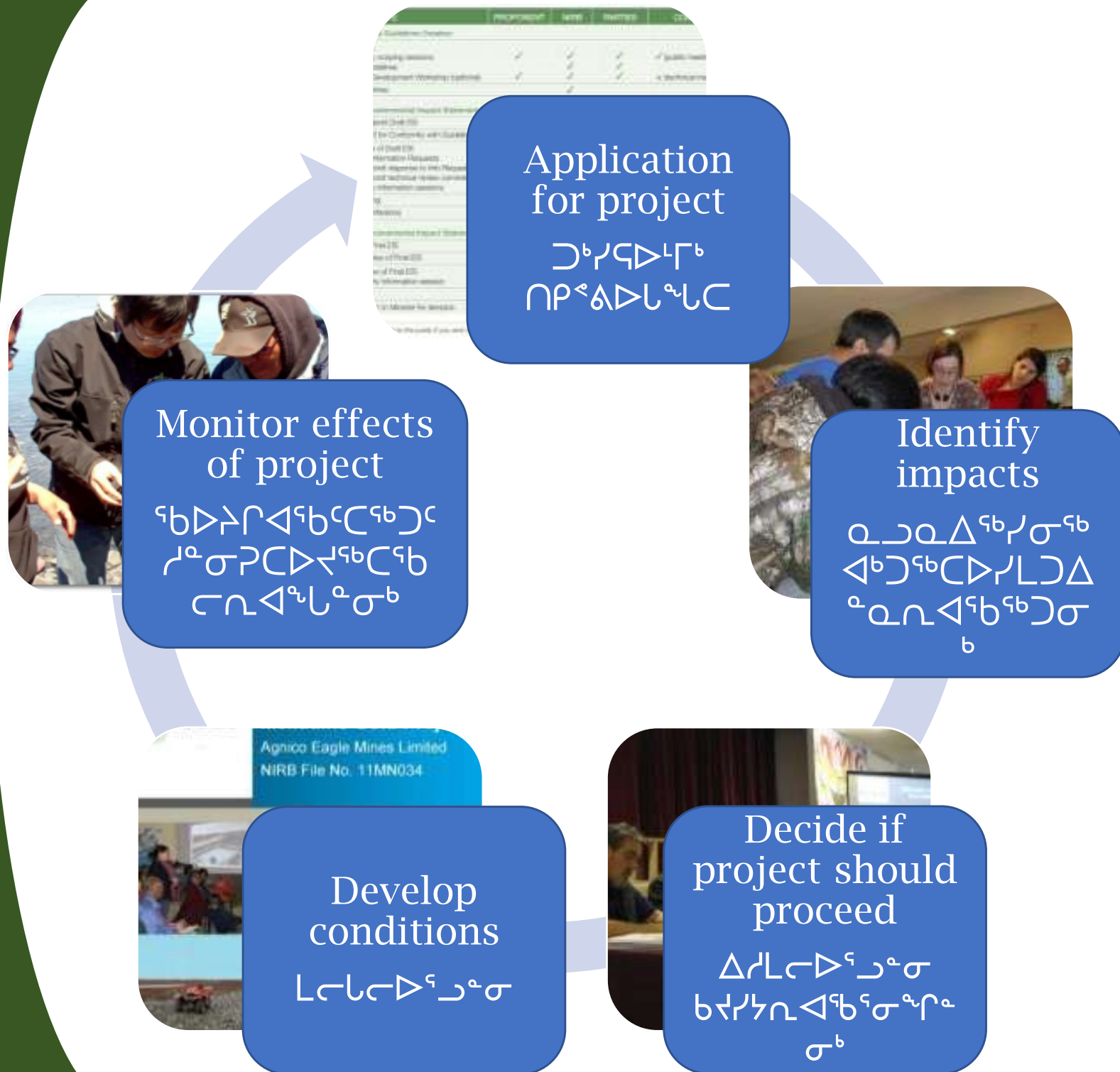
- [illegible]

- ገጠናዊ ልማት ለግብርና ምርትና ለጥጥር ልማት ማዘጋጀት

- An institution of public government responsible for environmental impact assessment of proposed projects in Nunavut

- To protect and promote the well being of the Environment and Nunavummiut through our work

ሐረጎችና ርዕስ
 ርዕስ ወይም ሐረግ
 ለምሳሌ ሐረግ
 ሐረግ
 ከሐረግ ርዕስ?





◀▷^{ᶜᵇ} ᵀᵇ ᵀᵇ ᵀᵀᵀ ▶ᶜᵇ ᵀᵇ ᵀᵀ

NUNAVUT
LAND CLAIMS
AGREEMENT
- BAKER
LAKE INUIT
OWNED LAND



Baker Lake

Project Overview

- | | |
|---|--|
| ■ Mine site 70 km north of Baker Lake | ■ ᐅᓄᕐᑕᒃᑕᐃᕐᑕᐃᕐ 70 ᐱᑕᑦᑕᐅᕐᕐ ᕐᑲᒪᓂ'ᑐᑕᐃᕐ |
| ■ Camp | ■ ᑲᑕᕐᑕᕐᑕᕐᑕᕐ |
| ■ Airstrip | ■ ᐱᑕᒃᑕᐃᕐ |
| ■ Mining infrastructure | ■ ᑦᑕᑕᕐᑕᐃᕐ |
| ■ Three open pits | ■ ᐅᓄᕐᑕᒃᑕᒃᑕᐃᑦᑕᐃᕐ |
| ■ Portage | ■ ᐱᕐᑕᐃᓂᕐ |
| ■ Bay Goose | ■ ᐅᓄᕐᑕᒃᑕᒃᑕᐃᕐᑕᐃᕐ |
| ■ Vault | ■ >ᑕᐃᕐ |
| ■ Baker Lake bulk fuel storage facility/marshalling area | ■ <ᐃ ᑕᕐ |
| ■ Fuel tank farm | ■ ᕐᑲᒪᓂ'ᑐᑕᐃᕐᑕᐃᕐ |
| ■ Laydown area | ■ ᐅᕐᑕᐃᓂᕐᑕᐃᕐ |
| ■ 110 km all-weather road linking Baker Lake to Meadowbank site | ■ ᐱᕐᑕᐃᕐᑕᐃᕐᑕᐃᕐᑕᐃᕐ
110 ᐃᑕᑦᑕᐃᕐ ᑕᑕᕐᑕᐃᕐᑕᐃᕐ
ᕐᑲᒪᓂ'ᑐᑕᐃᕐᑕᐃᕐ
ᑕᑕᕐᑕᐃᕐᑕᐃᕐᑕᐃᕐ |



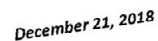
◁▷⁹ᵇ ᵑᵇ ▷⁹ᶜ ᵑᶜ ▷⁹ᵈ ᵑᵈ ▷⁹ᵉ ᵑᵉ ▷⁹ᶠ ᵑᶠ ▷⁹ᶜ ᵑᶜ ▷⁹ᵈ ᵑᵈ ▷⁹ᵉ ᵑᵉ ▷⁹ᶠ ᵑᶠ

በጊላሊ 2006, ልዩባራት ጋራ ለራሳቸው ልዩነቶች
ፈጥረው 004

ΔΔ**Δ**σ 2007, Δ^λσJ ΔJ^bd^c σ▷ΑΛ▷^ς>^c Δ>^ςΠε^ς▷^c
JΔσ^b ▷^λς^bCη<Δ^a~^λσ^b

[illegible]

87 በበኤል፣ ሊሊል፣ ከብርሃን ተለዋውጦች ለማስተካከል



Baker Lake and Marshalling Facility

ᑲᓱᓂᑦᑐᑦᑦ ᐱᑦᑲᓂᑦ ᐃᓂᓂᑦ



All Weather Access Road

◁⁹ᵈᶜ ▷↳⁹ᵇᶜℓ◁⁹ᵁᶜᵀ



Mine Site

▶ ⚡ ᑭᑦ ᑕᑦ ᑭᑦ



◁Cd^c Γ▷σ_n▷σ^o_l

A wide panoramic view of a coastal landscape. The foreground is dominated by a large, dark, rocky mound, likely a spoil bank or a natural rock formation. The ground is uneven, covered with loose rocks and patches of dry, brownish vegetation. In the middle ground, the terrain transitions into a flatter area with scattered rocks and small pools of water. The background features a vast expanse of water, possibly a bay or a large lake, with a distant shoreline visible under a cloudy sky.



Waste Management

ᐱᐸᐸᐸ ᐱᐸᐸᐸ ᐱᐸᐸᐸ



Tailings Storage Facility

ΔϵΔ^{ϵb}ϱ^{ϵb}ϱLJ^c◁^bC^ϵΔ^b



Landfarm

◁^bCΔ^ϵΔ^b

NIRB's Evaluation of the Meadowbank Gold Mine Project

ᐃᑦᐃᑦᐃᑦ
ᐃᑦᐃᑦᐃᑦᐃᑦ
ᐃᑦᐃᑦᐃᑦᐃᑦ
ᐃᑦᐃᑦᐃᑦᐃᑦᐃᑦ
ᐃᑦᐃᑦᐃᑦᐃᑦᐃᑦ
ᐃᑦᐃᑦᐃᑦᐃᑦᐃᑦ

Good

ᐃᑦᐃᑦᐃᑦ



Noise and
vibration

ᐃᑦᐃᑦᐃᑦ
ᐃᑦᐃᑦᐃᑦᐃᑦᐃᑦ



Water
Quality

ᐃᑦᐃᑦᐃᑦ
ᐃᑦᐃᑦᐃᑦᐃᑦ

NIRB's Evaluation of the Meadowbank Gold Mine Project

ᐃᑦᐱᑦᐱᑦ
ᐱᑦᐱᑦᐱᑦ
ᐱᑦᐱᑦᐱᑦ
ᐱᑦᐱᑦᐱᑦ
ᐱᑦᐱᑦᐱᑦ
ᐱᑦᐱᑦᐱᑦ

Satisfactory
ᐱᑦᐱᑦᐱᑦ



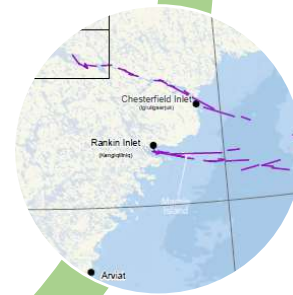
Fish and Fish
Habitat

ᐱᑦᐱᑦᐱᑦ
ᐱᑦᐱᑦᐱᑦ



Waste
Management

ᐱᑦᐱᑦᐱᑦ



Marine
Environment

ᐱᑦᐱᑦᐱᑦ



Abandonment and
Reclamation

ᐱᑦᐱᑦᐱᑦ
ᐱᑦᐱᑦᐱᑦ

Socio-economic

ᐱᑦᐱᑦᐱᑦ

𐌆𐌿𐌸𐌰
 𐌲𐌹𐌶𐌰𐌺𐌰
 𐌲𐌰𐌺𐌰𐌶𐌰
 𐌶𐌰𐌺𐌰𐌶𐌰𐌶𐌰
 𐌲𐌰𐌺𐌰𐌶𐌰𐌶𐌰
 𐌲𐌰𐌺𐌰𐌶𐌰𐌶𐌰





Thelon River

၄၃

▶

16

NUNAVUT
LAND CLAIM
AGREEMENT
- BAKER
LAKE INUIT
OWNED LAND

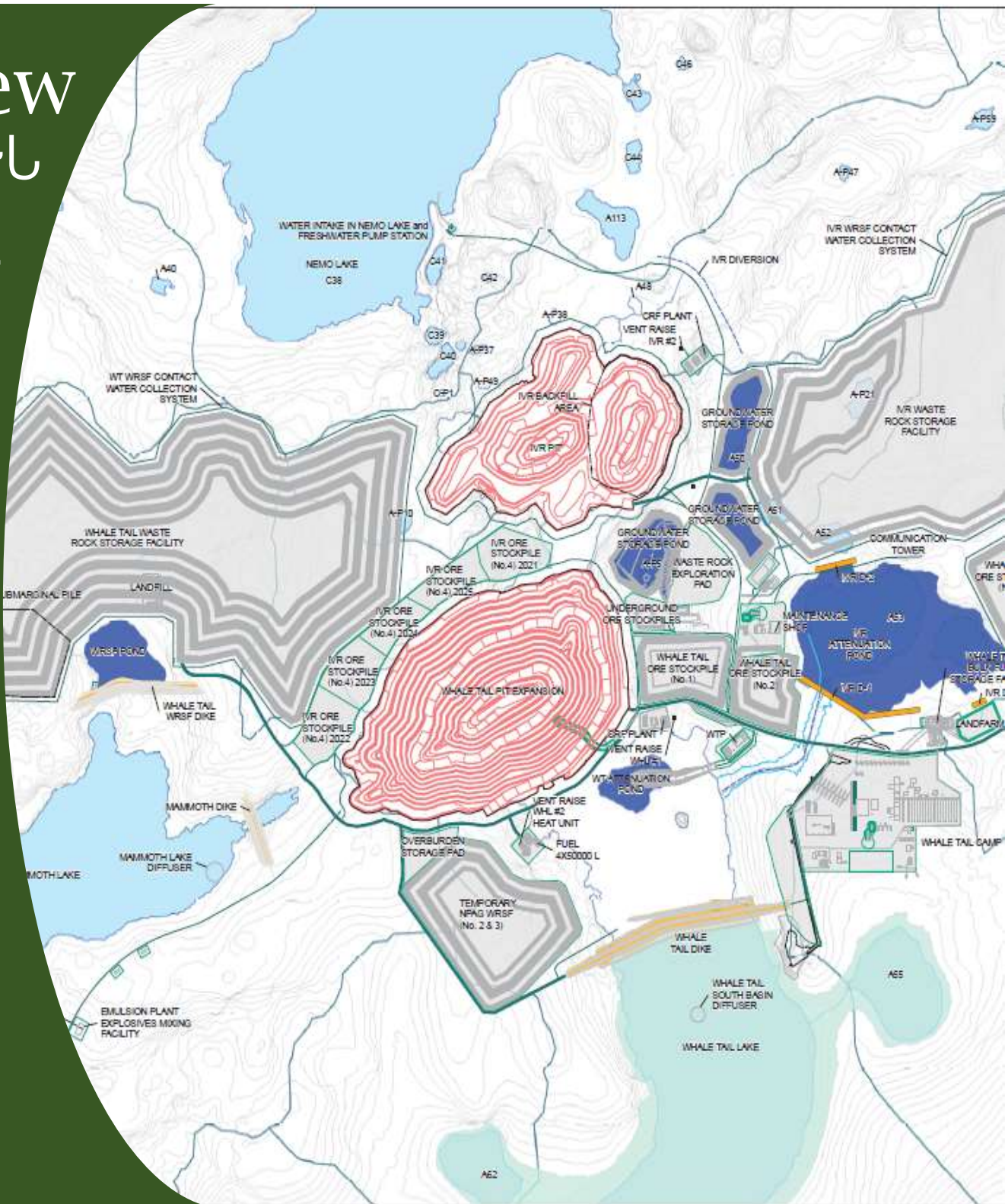


Baker Lake

Project Overview

- ~150 kilometres (km) N of Baker Lake and ~50 km NW of Meadowbank Gold Mine Project
- Open pit gold mining (Whale Tail and IVR Pit)
- Supporting infrastructure at Amaruq Property
- Use of existing infrastructure at Meadowbank
- Haul road

- ~150 ԲԱԴԾԻ ԵԱՅԱՅԼՏ
ԳԵԼՏ՝ԾԱՐ ԳԼ ~50 ԲԱԴԾԻ
ԾԱՐԱՅԼ ԳՆՈԱԳԾՐ
ԾԵԿԵՆԱԳՃԱՅԼ
- ԺԱԾՐ ԳԵՅԼՏ ԾԵԿԵՐԼԻՐ
(ԳՐԱԾԱԾՐ ՀԱՐԵ ԳԼ IVR
ԾԵԿԵՐՃԱՅԼ)
- ԱՇՆՎՈՏԵ ԶԵՐԳԾԳ ԳԼՔԵՂԵ
ԳՐԱԾԱԾՐԱՆ ԳՆՈԱԳԾՐ
ԱՇՆՎՈՐԵ
- ԴԾԵԿԵՐՈՐ ԳՐԱՆՅԱՆ



ᑭᐅᓇᓂᓕᔪᑦ ᓴᑦ ᐱᓄᓂ ᔨᓴᑦ ᑕᑦ ᐱᔪᓴᓴᑦ

[illegible]

2020

2021

IVR Pit

IVR ▷ㄹㄱᄃCᄃᄃᄃᄃ

2020



2021





Water Management ΔΓΔ< Γ<Δσρλ>σ^ρλ

COVID-19 Initiatives

COVID-19 ᐱᓕᓂᐱᓐᓂᐱ



NIRB's Evaluation of the Whale Tail Pit Project

መደግፍ
ልዩባህርት
ክብረት
ኖይትና ማስገደድ
የዓለም
አዋጅ
ፈንክሽን
ፍጥነት

Good
ለፈጠረ



Birds and bird
Habitat
በፍጥነት
መግቢያ



Hydrogeology
and Hydrology
ፈንክሽን
ፍጥነት



Geological Features,
Soils and
Permafrost
ፈንክሽን, ፈንክሽን,
መግቢያ

NIRB's Evaluation of the Whale Tail Pit Project

ᠮᠣᠵᠤᠨ
 ᠠᠨᠠᠨᠠᠨᠠᠨᠠᠨᠠᠨ
 ᠪᠠᠨᠠᠨᠠᠨᠠᠨᠠᠨ
 ᠰᠠᠨᠠᠨᠠᠨᠠᠨᠠᠨᠠᠨ
 ᠰᠠᠨᠠᠨᠠᠨᠠᠨᠠᠨᠠᠨ
 ᠰᠠᠨᠠᠨᠠᠨᠠᠨᠠᠨᠠᠨ
 ᠰᠠᠨᠠᠨᠠᠨᠠᠨᠠᠨᠠᠨ
 ᠰᠠᠨᠠᠨᠠᠨᠠᠨᠠᠨᠠᠨ

Satisfactory
 ᠰᠠᠨᠠᠨᠠᠨᠠᠨᠠᠨᠠᠨ



Aquatic
 Environment
 ᠠᠨᠠᠨᠠᠨᠠᠨᠠᠨᠠᠨ
 ᠠᠨᠠᠨᠠᠨᠠᠨᠠᠨᠠᠨ



Noise and
 Vibration
 ᠰᠠᠨᠠᠨᠠᠨᠠᠨᠠᠨᠠᠨ
 ᠠᠨᠠᠨᠠᠨᠠᠨᠠᠨᠠᠨ



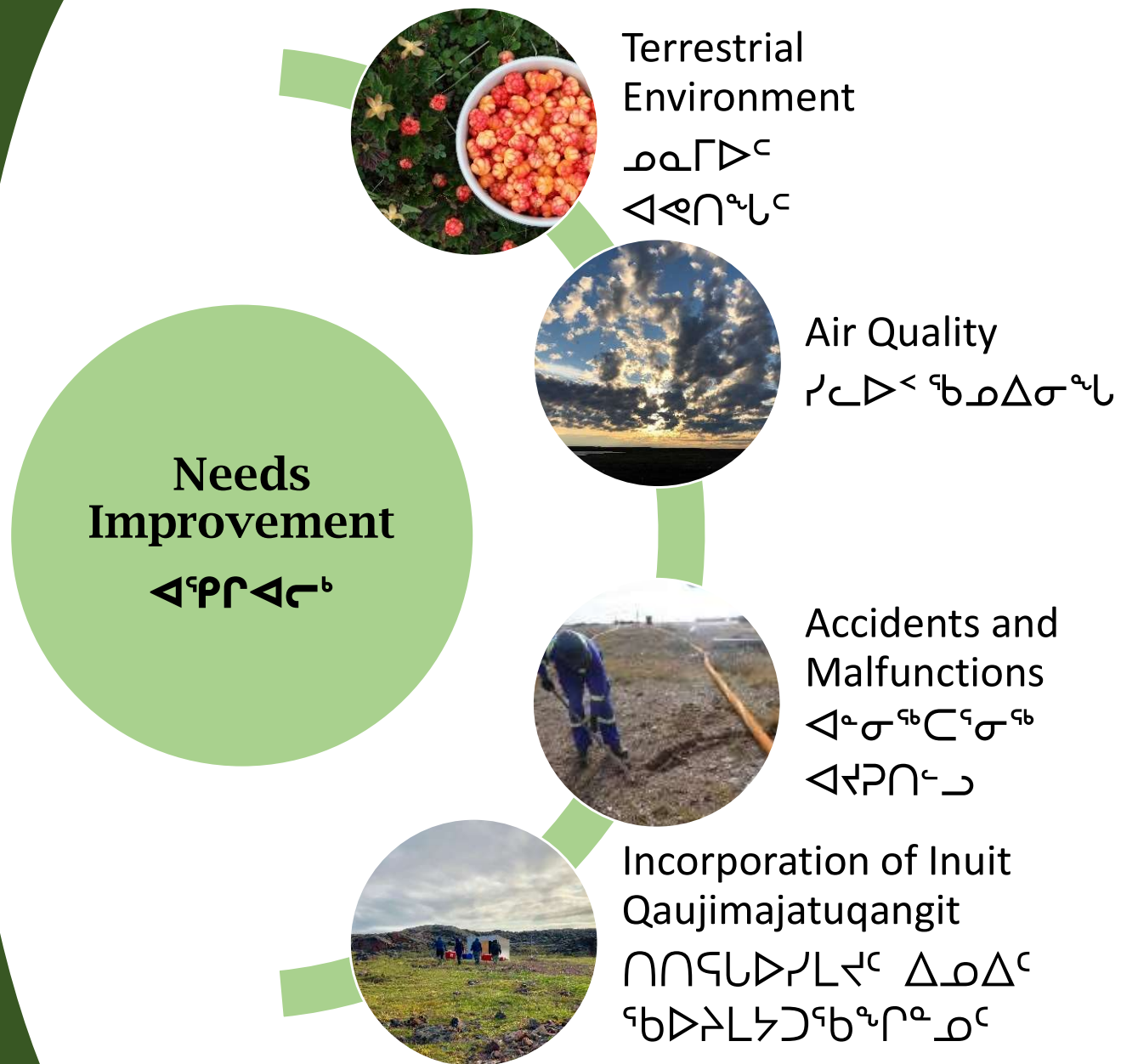
Water Quality
 ᠠᠨᠠᠨᠠᠨᠠᠨᠠᠨᠠᠨ



Socio-economic
 ᠠᠨᠠᠨᠠᠨᠠᠨᠠᠨᠠᠨᠠᠨ

NIRB's Evaluation of the Whale Tail Pit Project

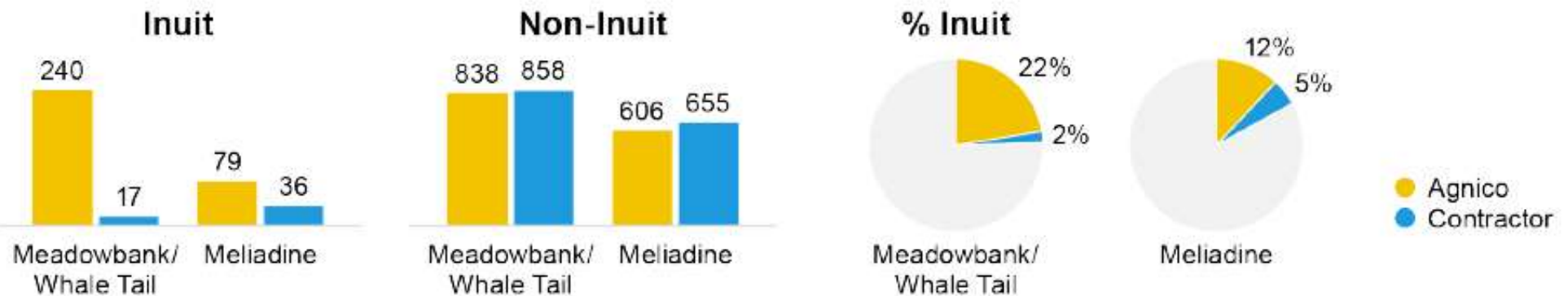
ፌዴራል
 ልዩ ጋርድያን
 ኮሚሽን
 ናይ ስልጣንና ምርጫ
 ናይ ሕግና ፍትሕ
 ኮሚሽን
 ናይ ሕግና ፍትሕ
 ኮሚሽን



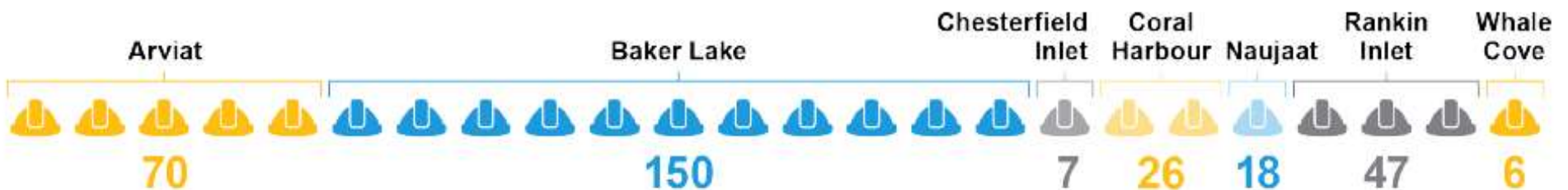
2021 Socio-Economic Summary

2021 ᐃᐅᓯᑦᐱᑦ ᐱᓄᑦᑕᐸᓂᑦᐱᑦ ᐃᐸᑕᓯᐸᑦᐱᓯᐱᑦ

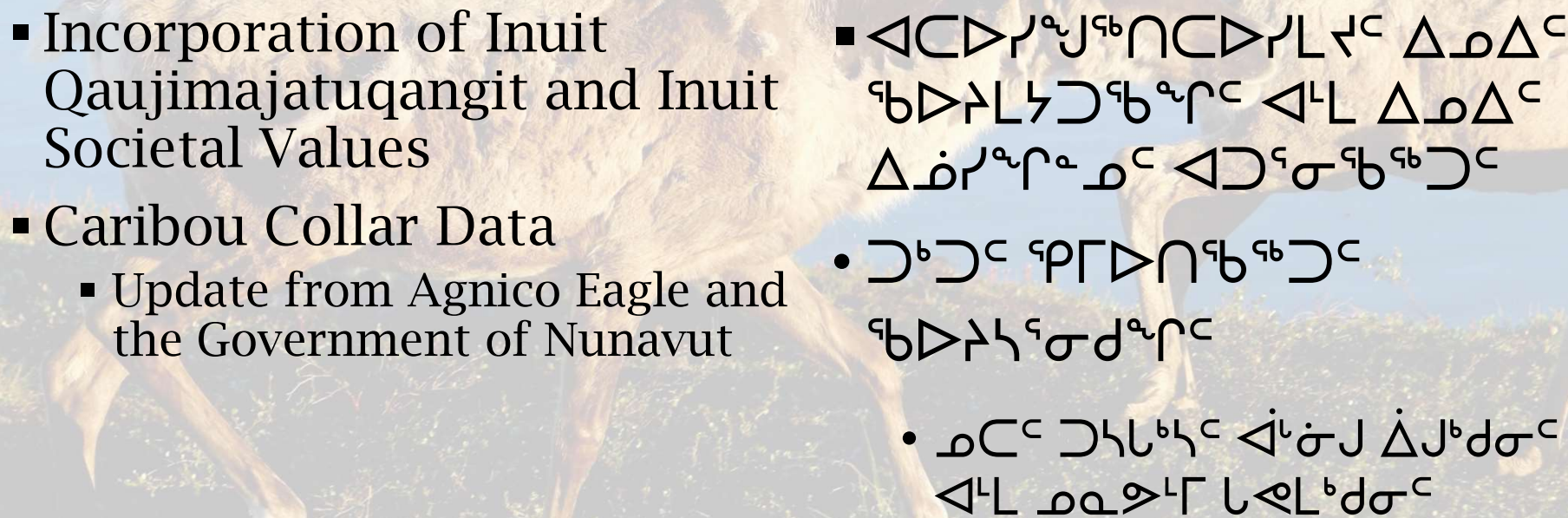
Inuit Employment / ᐃᐅᐃᑦ ᐃᑦᐅᐃᓴᑦᓂᓴᑦ



Employment by Community / ᐃᑦᐅᐃᓴᑦᐱᑦ ᓄᐸᑦᓂᓴᑦ



[illegible]

- 
- Incorporation of Inuit Qaujimajatuqangit and Inuit Societal Values
 - Caribou Collar Data
 - Update from Agnico Eagle and the Government of Nunavut

[illegible]

- $\triangleleft \triangleleft \Delta^a \triangleleft \triangleright \nabla \nabla \nabla^c \nabla^a \sigma \triangleright^c \nabla^b \Gamma \Delta^a \nabla \Delta^b \nabla^c \nabla^c$
 $\nabla \nabla \nabla^c \Delta^b \nabla^a \sigma^b$

- [illegible]

Upcoming Project Proposals: Meliadine Extension

ፀሐይ ግርግር
ጋራ ግርግር፡
ርዕሰ ግርግር
ፈርሶ ግርግር

The NIRB will be
conducting a
community tour to
keep you involved
so stay tuned!

ወይን ግርግር
በገረግር ወርሶ
ርዕሰ ግርግር
ፈርሶ ግርግር!

Thank you Matna L^{co}

Questions? ՀԱՅԵԺՈՒԿԻՆԻՅԱՆ?

