

Coral Harbour Solar and Energy Storage Project – Executive Summary and Project Schedule

Project Overview:

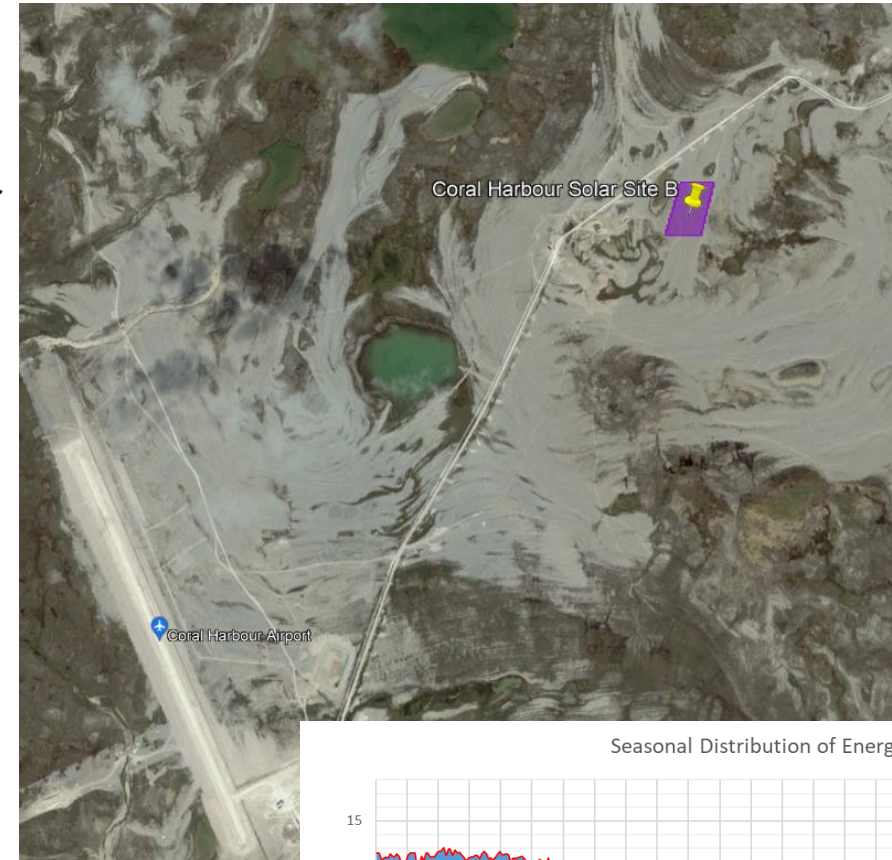
- 0.96 MW solar energy with 1MWh battery storage
- 1596 MWh/year of electricity produced
- Peak production from March – August, lowest production from November – January.
- Project lifetime: 30 years or more
- Project specifications:
 - Fixed tilt, south facing, bifacial arrays
 - 2064 modules, 10 rows, 3 inverters
 - 110m of new road
 - 2.5 ha (6.5 acre) project area
- Estimated construction start: 2024
- Estimated start of operations: 2025

Project Budget and Funding

- Total Estimated Project Budget: \$11 million CAD
- Current Funders:
 - Indigenous Off-Diesel Initiative
- Funding Programs of Interest:
 - NRCan Smart Renewables and Electrification Pathways Program
 - ECCC Low Carbon Economy Challenge

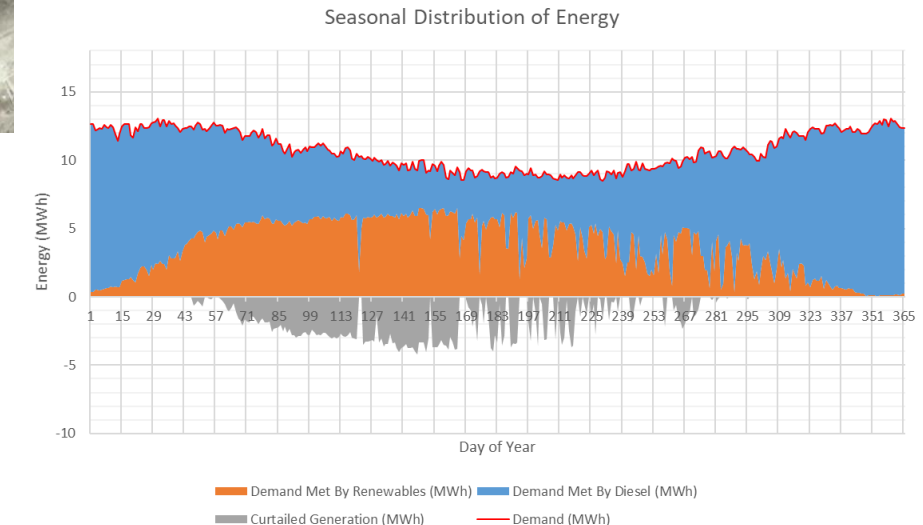
Project Partners

- Kivalliq Alternative Energy
 - Sakku Investments Corporation
 - Northern Energy Capital



Above:
Proposed
project
location

Below:
Estimated
proportion of local
electricity demand
that could be met
by a solar energy
project annually
(orange area)



Project Schedule and Planned Activities

1. Land Tenure
 - Obtain lease and land use permits
2. Environmental Assessment & Permitting
 - Conduct conformity determination with NPC, environmental assessment with NIRB
 - Other permits as required (eg. NAV CANADA, Transport Canada)
3. Data Collection at Site
 - Ground survey & geotechnical assessment
4. Interconnection Study with QEC
 - Pending release of their IPP program
5. Advanced Design and Engineering
 - Informed by results of survey and geotechnical work, and project conditions set by QEC
6. Procurement Negotiations
 - Solar Supply and Install
 - Local Contractors
7. Offtake Negotiations and Financial Close
 - Negotiate Power Purchase Agreement with QEC
 - Finalize all contracts and secure funding
8. Construction
 - Approximately one year duration
9. Operations & Maintenance
 - Beginning 2025
 - Training of local personnel

Project Work Completed to Date

- Desktop review and feasibility studies
- Initial site visits to determine preferred candidate location
- Grant writing and research for project funding
- Creation of preliminary, high level project budget
- Early engagement with Hamlet, QEC, NPC, and GN

