



Committee Bay Project

INAC Commercial Lease: 056J/11-1-2, 056J/12-1-2
INAC Land Use Permit: N2021C0001, N2021C0002
Kitikmeot Inuit Association: Land Use Permit KTL314C003
NIRB Project Reference Number: 07EN021
NWB Licence: 2BE-CRA2025

Annual Report

2022

North Country Gold Corp.
January 2023

1.0 **TABLE OF CONTENTS**

1.0	TABLE OF CONTENTS	1
2.0	DISTRIBUTION.....	3
3.0	BACKGROUND	4
4.0	PROJECT DESCRIPTION.....	5
4.1	Camps.....	7
4.1.1	Hayes Camp	7
4.1.2	Bullion Camp.....	7
4.1.3	Ingot Camp.....	7
4.1.4	Crater Camp.....	7
4.2	Caches	7
4.2.1	Three Bluffs drill area and cache	7
4.2.2	West Plains cache.....	7
4.3	Three Bluffs gold deposit	8
4.4	Regional Prospects	8
5.0	2022 WORK ACTIVITIES	10
6.0	2021 WORK ACTIVITIES	10
6.1	Mineral Exploration Activities	10
6.1.1	Diamond Core Drilling	10
6.1.2	Surface Sampling and Mapping	11
6.2	Other Work Activities.....	13
6.3	Camp Usage	14
6.4	Local Hiring	14
6.5	Consultation	15
6.6	Expenditure	15
7.0	2020 WORK ACTIVITIES	15
8.0	LAND USE INSPECTIONS.....	16
8.1	2021 Inspection.....	16
9.0	WATER	16
9.1	Water Use	16
9.2	Water Sampling.....	16
10.0	WILDLIFE	16
11.0	SPILLS.....	16

List of Tables

Table 1: NCGC Permits and Licences	4
Table 2: Camps and caches within the Committee Bay Project	5
Table 3: 2021 Diamond Drilling Activity	11

List of Figures

Figure 1: Committee Bay Project Overview	6
Figure 2: Committee Bay Project Mineral Occurrences.....	9
Figure 3: 2021 Diamond Drilling at the Raven Prospect. Drill hole 21RV-010	11
Figure 4: 2021 Surface Exploration Activities at the CBP.....	12
Figure 5: Bullion Camp – August 2021	14

2.0 **DISTRIBUTION**

Organization	Distribution Email
Indigenous and Northern Affairs Canada (INAC)	Aadnc.landsmining.aandc@canada.ca
Environment Canada (EC)	enviroinfo@ec.gc.ca
Government of Nunavut – Department of Environment (GN-DOE)	environment@gov.nu.ca
Kitikmeot Inuit Association (KIA)	landsofficerkia@qiniq.com projectofficer@kitia.ca
Nunavut Impact Review Board (NIRB)	info@nirb.ca
Nunavut Water Board (NWB)	licensing@nwb-oen.ca

3.0 **BACKGROUND**

In October 2020 Auryn Resources Inc. was renamed Fury Gold Mines Limited ('Fury'). Fury remains a Canadian-focused high-grade gold exploration company strategically positioned in two prolific mining regions: the Kitikmeot Region in Nunavut and the James Bay Region of Quebec. North County Gold Corp. (NCGC) is a wholly owned subsidiary of Fury and is the 100% owner and operator of The Committee Bay Project (CBP). Fury's management team is highly experienced with a track record of success in discovery and development, including the advancement of two gold projects located in West Africa and Mexico.

Fury's exploration strategy for the Committee Bay Project is to identify additional deposits within the Committee Bay Belt via regional grassroots exploration and further drill-testing of previously identified gold prospects. Innovative low impact and cost-effective exploration techniques also form a large part of the exploration strategy for the CBP.

The CBP is made up of mineral claims and leases located on Crown Land and surface and sub-surface Inuit Owned Lands (IOLs) which are subject to the Nunavut Land Claims Agreement (NLCA). See Table 1 for NCGC permits and licences for advanced exploration activities on the CBP.

Organization	Description	Permit/Licence #
Nunavut Impact Review Board (NIRB)	Project Reference Number	07EN021
Indigenous and Northern Affairs Canada (INAC)	Land Use Permit (Bullion camp)	N2021C0002
	Land Use Permit (Hayes camp)	N2021C0001
Kitikmeot Inuit Association	Land Use Licence for IOL (Ingot/Crater camps)	KTL314C003
Nunavut Water Board (NWB)	Water Licence	2BE-CRA2025
Indigenous and Northern Affairs Canada (INAC)	Commercial Leases	Lease 056J/11-1-2
		Lease 056J/12-1-2

Table 1: NCGC Permits and Licences

4.0 **PROJECT DESCRIPTION**

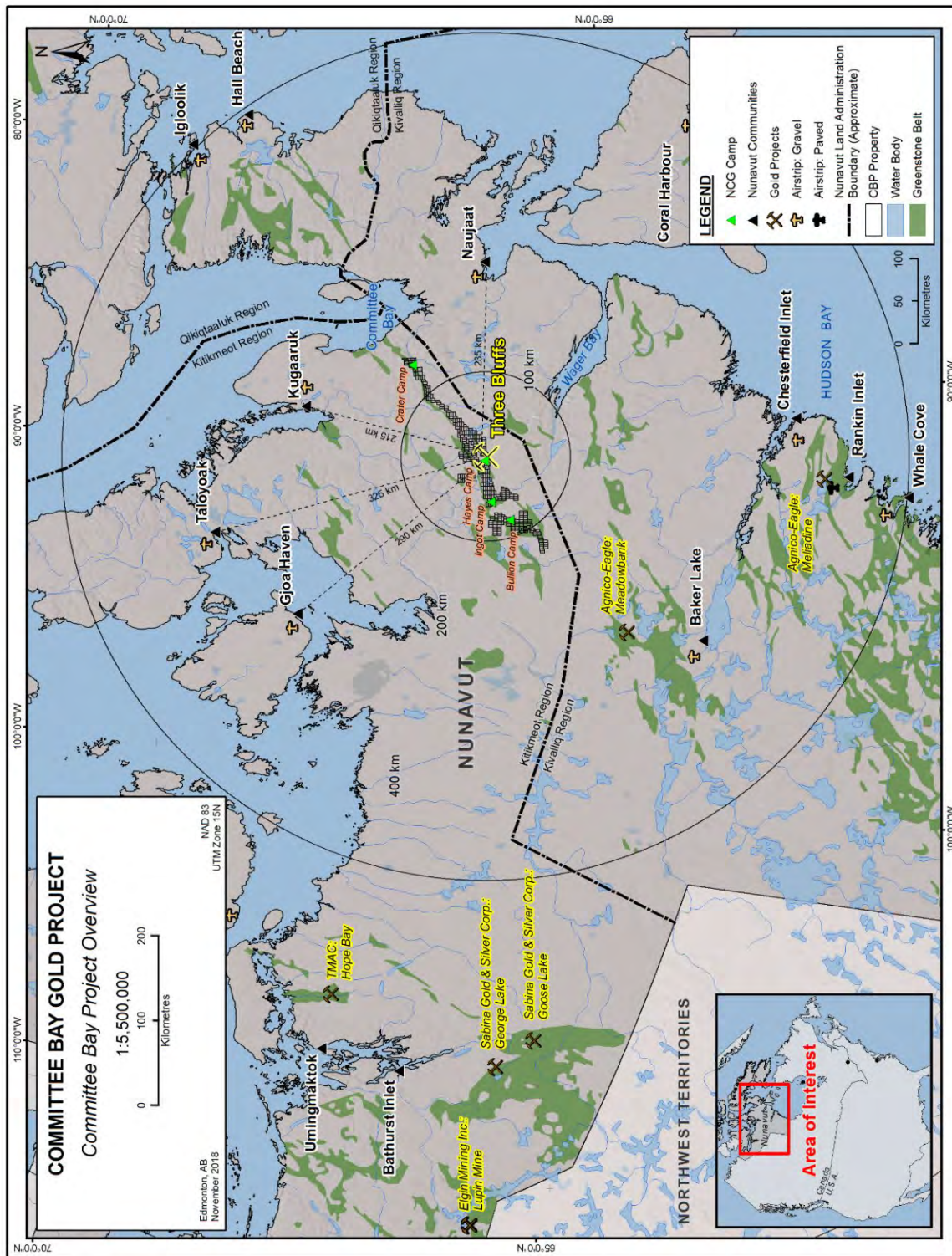
A land package of 190 mineral claims and 57 mineral leases currently comprise the CBP. This land package lies within a corridor of greenstone belt originating at Committee Bay continuing for approximately 300 km to the southwest towards Agnico Eagle's Meadowbank Mine, within the Eastern Kitikmeot region of Nunavut Territory. The location and distance to local communities can be seen in Figure 1.

The CBP covers approximately 297,000 hectares and encompasses the Three Bluffs gold deposit, more than five advanced gold targets and several significant gold anomalies. There are four permitted camp sites on the CBP. There are also two fuel and equipment caches across the CBP. Camp and infrastructure locations are presented in Table 2.

Site	UTM Coordinates (NAD 83)			Latitude	Longitude
<i>Name</i>	<i>Zone</i>	<i>Easting (m)</i>	<i>Northing (m)</i>	<i>D°M'S"</i>	<i>D°M'S"</i>
Hayes Camp	15 N	564,613	7,394,173	66°39'30" N	091°32'11" W
Bullion Camp	15 N	494,850	7,363,850	66°23'39" N	093°06'55" W
Ingot Camp*	15 N	516,500	7,386,100	66°35'40" N	092°37'34" W
Crater Camp	16 N	420,290	7,474,040	67°22'19" N	088°51'24" W
Three Bluffs Drill Area	15 N	569,153	7,392,660	66°38'42" N	091°26'12" W
West Plains Cache	15 N	479,650	7,342,810	66°12'19" N	093°27'02" W

Table 2: Camps and caches within the Committee Bay Project

(*Ingot camp has been on care and maintenance for several years with no exploration being conducted from that location).



4.1 Camps

4.1.1 Hayes Camp

Hayes Camp is centrally located within the Committee Bay Project, 335 km northeast of Baker Lake, 400 km north of Rankin Inlet and 220 km south of Kugaaruk and provides accommodation for up to 100 people. The camp is supported by a 914 m (3,000') graded esker airstrip and a permitted, seasonally prepared 1,585 m (5,200') winter ice airstrip which is constructed on the adjacent Sandspit Lake. Mobile equipment and earthmoving equipment, power generators, a dual chambered incinerator, fuel and oils are stored at Hayes Camp. There are three permitted quarries near to Hayes camp where no material has been removed from since 2011.

4.1.2 Bullion Camp

Bullion Camp is a small, 20-to-40-person camp used to support seasonal exploration campaigns in the southern portion of the project. This camp is supported by a short 320 m tundra airstrip, a small generator and a small drummed fuel cache.

4.1.3 Ingot Camp

Ingot Camp may accommodate up to 30 people and is used to support seasonal exploration campaigns in the central southern portion of the project. This camp is supported by a 230 m tundra airstrip. A small generator and limited quantities of fuel may be stored at this camp when active.

4.1.4 Crater Camp

Crater Camp is a small, 20-to-40-person camp used to support seasonal exploration campaigns in the northern portion of the project. This camp is supported by a 260 m tundra airstrip, a small generator and a small drummed fuel cache.

4.2 Caches

4.2.1 Three Bluffs drill area and cache

The Three Bluffs drill area and cache is located approximately 5 km east-southeast of Hayes Camp. This area encompasses the Three Bluffs gold deposit and contains three diamond drills and associated equipment along with a small shop and a fuel and consumables cache.

4.2.2 West Plains cache

The West Plains cache has limited materials remaining as they were utilized at various other prospects in recent years. A small supply of core boxes and miscellaneous lumber is all that remains.

4.3 Three Bluffs gold deposit

The Three Bluffs gold deposit is located approximately central to the CBP, 220 km south of Kugaaruk, 235 km west of Repulse Bay and approximately 300 km northeast of Agnico Eagle's Meadowbank Mine.

The Three Bluffs gold deposit mineral resource¹ comprises:

- *An indicated mineral resource of 2.070 Mt at an average grade of 7.85 g/t Au (524,000 oz.)*
- *An inferred mineral resource of 2.930 Mt at an average grade of 7.64 g/t Au (720,000 oz.)*

Three Bluffs occupies a portion of a much larger scale mineralized structure referred to as the Walker Lake Trend. Work to date has outlined high-grade mineralization along the 4 km long Walker Lake Trend with local vertical depths in excess of 500 m.

NCGC strongly believes that continued exploration has excellent potential to increase its mineral resources at Three Bluffs. Future exploration work at the Three Bluffs is expected to continue and may include diamond core drilling.

4.4 Regional Prospects

The CBP encompasses several other high-grade gold targets in addition to the Three Bluffs gold deposit. These prospects include Raven, Aiviq, Aarluk, Inuk, Anuri, West Plains, and numerous others (Figure 2). Prospecting, geophysics, rotary air blast (RAB) and diamond drilling have been used along the Committee Bay Greenstone Belt to identify these highly prospective areas.

¹ Please see Technical Report on the Three Bluffs Gold Project, Nunavut, Canada, May 31, 2017 filed on www.sedar.com. Resource estimation was completed in accordance with Canadian Institute of Mining, Metallurgy and Petroleum (CIM) Estimation of Mineral Resource and Mineral Reserve Best Practice Guidelines and is reported in accordance with National Instrument 43-101. Mineral resource reported at 3.0 g/t block cut-off grade for material considered amenable to open pit mining and above 4.0 g/t block cut-off grade for material amenable to underground mining.

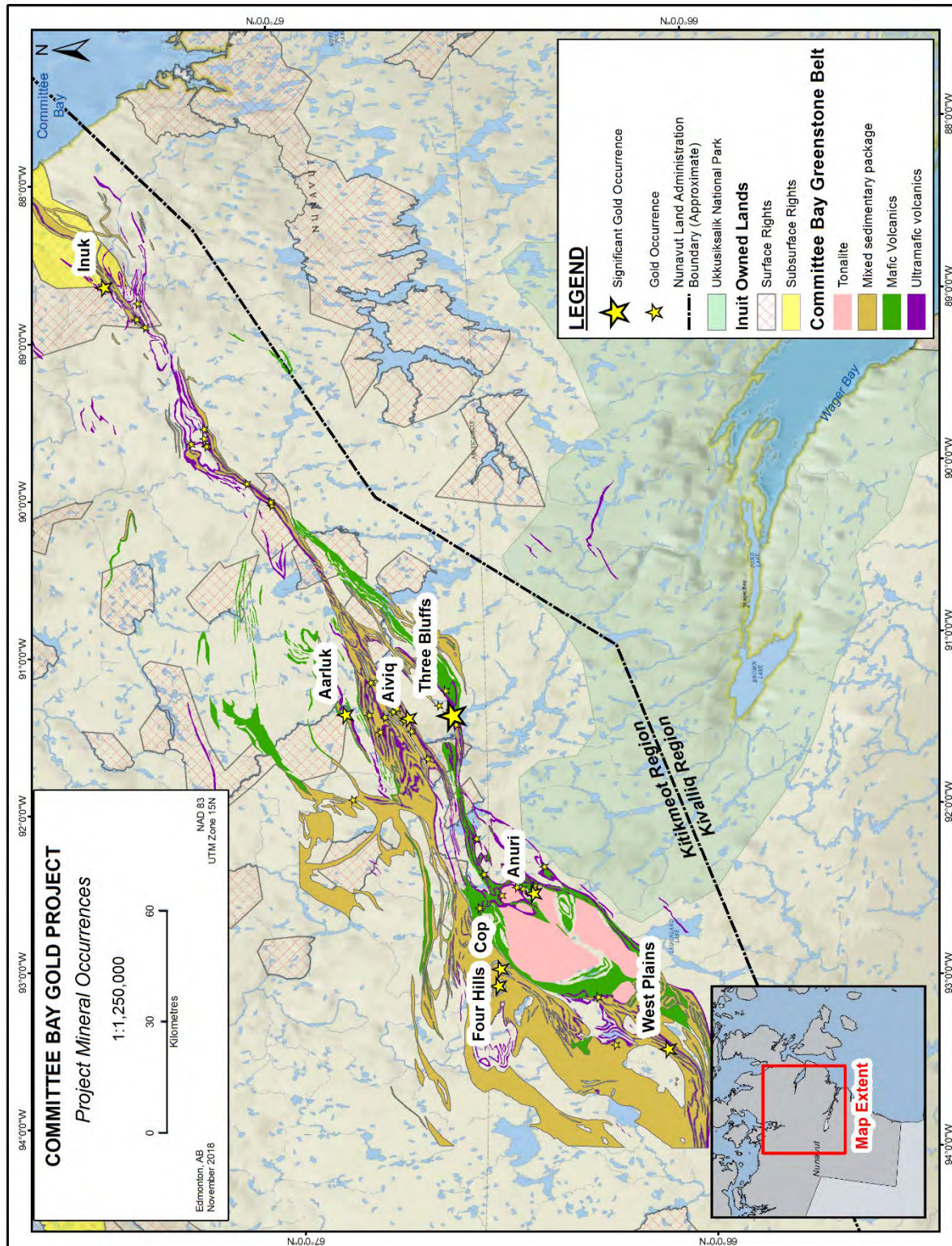


Figure 2: Committee Bay Project Mineral Occurrences

5.0 **2022 WORK ACTIVITIES**

During 2022 a reclamation program was carried out to address several concerns raised during a September 2021 Land Use site inspection. During the reclamation program all camps and caches were inspected and any additional items of note were addressed. A full report on the reclamation program including photographs is included as Appendix 1 of this report. The 2021 Land Use inspection report in its entirety is included as Appendix 2 for reference.

6.0 **2021 WORK ACTIVITIES**

The 2021 exploration program comprised diamond drilling, geological mapping and surficial sampling. Site maintenance and remediation efforts are a continual aspect of exploration programs at the CBP. Activities occurred on mineral claims and leases on both Crown and Inuit Owned surface lands.

6.1 Mineral Exploration Activities

6.1.1 Diamond Core Drilling

Diamond core drilling was carried out at the high-grade historical Raven prospect as well as at the Three Bluffs Gold Deposit. Drilling at both areas targeted extensions of known gold mineralization at depth. A total of 2,580m were completed in eight drill holes. Of the eight drill holes only five reached their target depth due to difficult ground conditions encountered downhole.

The 2021 Drilling at the Three Bluffs Gold Deposit successfully extended high-grade gold mineralization 120m down dip from previously encountered mineralization. Drill hole 21TB-152 intercepted 10.0m of 13.93 g/t Au; 3.0m of 18.67 g/t Au and 1.0m of 23.2 g/t Au. These intercepts are within deformed metasediments which is atypical of gold mineralization at Three Bluffs. The identification of additional gold mineralization within deformed meta sediments are extremely encouraging and will allow Fury to further broaden its exploration efforts both at Three Bluffs and along the entire CBGB.

All four completed drill holes at the Raven Prospect intercepted broad zones of silica-sericite alteration with associated quartz – tourmaline veining with arsenopyrite and visible gold. Highlights include 9.18 g/t Au over 1.5m and 7.3 g/t Au over 1.0m from 21RV-012 and 0.88 g/t Au over 8m in 21RV-011. The 2021 drilling increased the mineralised footprint at Raven by 160m down plunge and 70m along strike.

Prospect	# of Diamond Drill Holes	Total Diamond Drill Metres Drilled
Raven	5 (4 completed)	1422.1
Three Bluffs	3 (1 completed)	1157.8

Table 3: 2021 Diamond Drilling Activity



Figure 3: 2021 Diamond Drilling at the Raven Prospect. Drill hole 21RV-010

6.1.2 Surface Sampling and Mapping

Detailed till geochemical sampling was undertaken at various prospects within the CBP. A total of 1,522 detailed till and 73 rock samples were collected during 2021 (Figure 4).

Sampling at Raven identified high-grade gold mineralization 150m south of the main Raven showing along an undrilled structure at the edge of an 8km long regional shear zone. Seven rock grab samples from outcrop returned results above 10 g/t Au with a peak of 32.9 g/t Au. Gold and arsenic in till now define a coherent 1,400m x 500m anomaly at Raven.

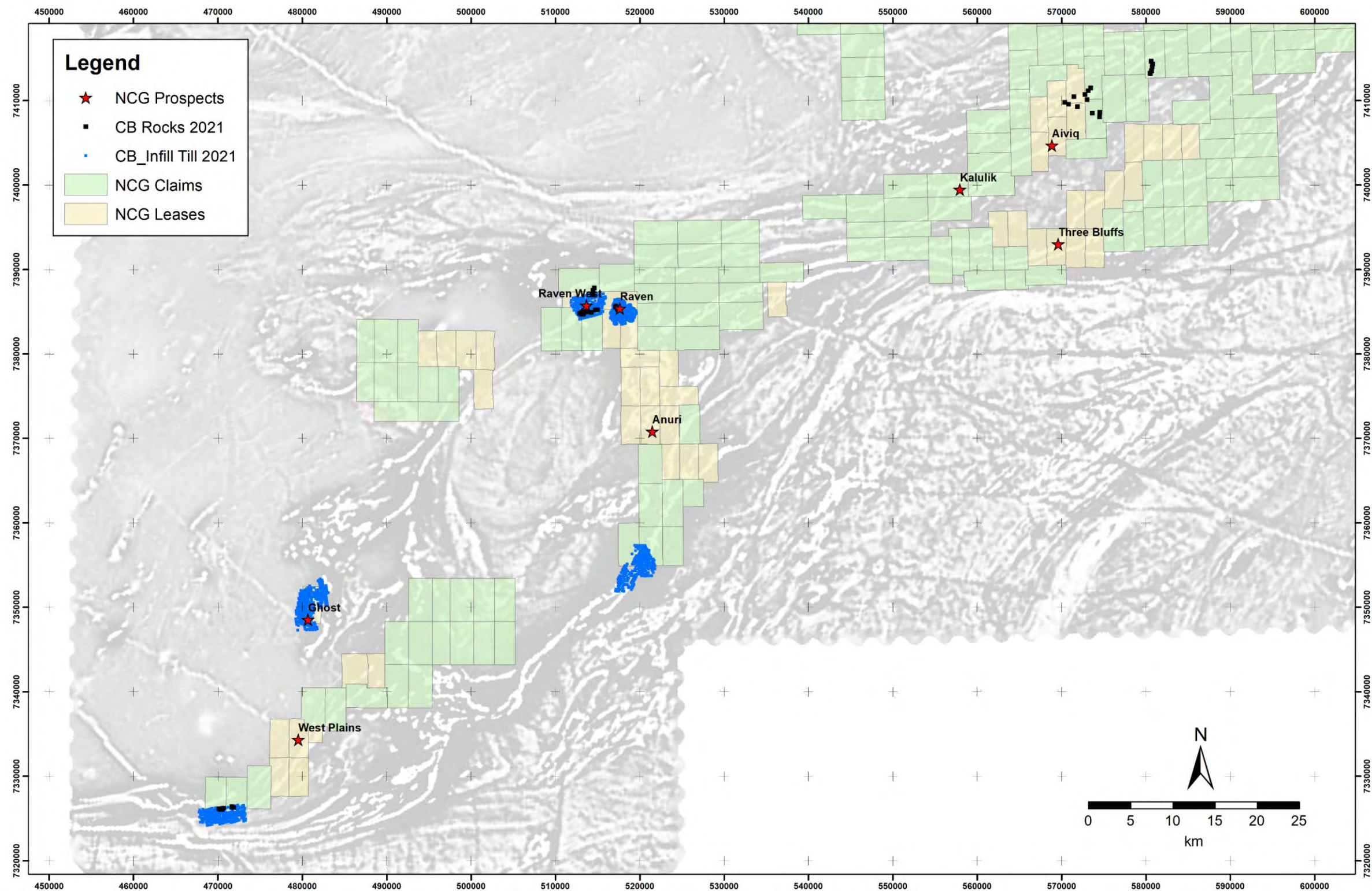


Figure 4: 2021 Surface Exploration Activities at the CBP

NCGC Committee Bay Project – 2022 Annual Report

6.2 Other Work Activities

Other work activities comprised non-exploration activities that occurred at the CBP during the 2021 field season included remediation work and maintenance at Three Bluffs and Hayes Camp.

Waste at site was weighed and organized in preparation for future backhauls. This waste includes scrap metal, waste oils, grease, contaminated materials (fuels, soil, water), used oil, etc. The waste pallets are numbered and their locations are noted for ease of building backhaul loads.

Waste Water Treatment Plant (WWTP)

The WWTP was not used during the 2021 Summer program and was left winterized at the end of Summer 2021. Inspections inside and outside the installation revealed no leaks of the 2017 RV antifreeze.

Hayes Camp

- Inspection and general maintenance of the camp infrastructure and equipment.
- Hazardous waste products were sorted, consolidated and stored in secondary containment within a covered quonset structure ready for back haul.
- Fuel containment was inspected, repaired, covered and secured.
- Ongoing reclamation at the Quarry site, Burrow Area 1, just to the north of camp was completed. This included monitoring snow melt and runoff.
- General camp cleanup and maintenance.
- Maintenance on heavy equipment to ensure optimal performance and no leaks.
- Water samples taken and tested.
- Demobilization of RAB drill off site.

Three Bluffs Drill Grid

- Fuel cache was inspected and repaired where required.
- Drill office and storage were inspected and levelled.

Bullion Camp

- Inspection of camp and infrastructure was completed (Figure 5).
- Fuel containment berm was inspected.



Figure 5: Bullion Camp – August 2021

6.3 Camp Usage

Exploration activities between July 6th and August 19th were based out of Hayes Camp.

6.4 Local Hiring

Due to the COVID-19 pandemic and associated restrictions on movement within Nunavut for both Nunavummiut and non-Nunavummiut NCGC made all efforts possible to reduce interaction with Nunavut communities. To this end, no local hiring was completed, however NCGC sponsored several residents in Kugaruk through credits at the local Co-op.

NCGC considers its work force of local personnel hired from the nearby communities to be an integral part of the success of its exploration. Local knowledge of the land, climate and environment brought to the team by residents of the region factor heavily into all NCGC's operational decisions.

In past seasons, local employees were engaged in several capacities including camp managers and assistants, equipment operators, incinerator operators, carpenters, mechanics, core cutters, drill pad builders and kitchen helpers. NCGC provides both practical 'on the job' training and certificate-based training for local workers.

The company looks forward to recommencing explorations activities at the CBP in 2022 and to the continued hiring and training of a local workforce.

6.5 Consultation

Due to the COVID-19 pandemic and associated travel restrictions the company was not able to complete in person consultation in the nearby community during 2021. A formal consultation will be completed in 2022 to provide an update on activities and 2022 exploration plans.

6.6 Expenditure

Approximately \$1.07 million was expended with northern businesses and the employment of local workers. This accounts for ~33% of the total \$3.25 million in expenditures during the 2021 field season. Northern businesses involved in the 2021 program included:

- Arctic Buying Company
- Advanced Medical Solutions
- Baker Lake Contracting & Supplied Ltd.
- Baker Lake Lodge
- Calm Air
- Canadian North
- Kitikmeot Helicopters
- NEAS
- Northern Comm. & Nav. Systems
- Nunavut Sealink & Supply Inc.
- Ookpik Aviation Inc.
- SK Construction Ltd
- The North West Co. Inc.
- Toromont Arctic

7.0 2020 WORK ACTIVITIES

No work was carried out on the CBP during 2020 due to the COVID-19 pandemic and associated travel restrictions into Nunavut. A letter was sent out to stakeholders informing them of the decision not to work the project due to the pandemic and concerns over bringing COVID-19 into Nunavut.

8.0 **LAND USE INSPECTIONS**

8.1 2021 Inspection

A land use and water licence inspection was completed on the CBP on September 5, 2021 by INAC inspector Jonathon Mesher. As this inspection occurred after the 2021 exploration activities all noted concerns will be addressed in 2022. The inspection form is included as appendix 2. .

9.0 **WATER**

9.1 Water Use

There was no water use during the 2022 Reclamation program.

9.2 Water Sampling

No water samples were collected in 2022.

10.0 **WILDLIFE**

No wildlife sightings were noted during the brief 2022 reclamation program.

11.0 **SPILLS**

There were no spills during the 2022 reclamation program.

Appendix 1: 2022 Reclamation Report

A) Crater Camp: 10 August 2022

Point 1: Inspection Photo 1 and 2:

Main fuel cache containment cover straightened and properly tied down, voids filled with empty drums.



Point 2 and 4: Inspection Photo 3, 4, 6, 7, 8 and 9:

Uncovered tent heating fuel drums and berms were removed and stored indoors.



Point 3: Inspection Photo 5:

Grey water sump cover removed and sump completely filled in and levelled.



B) Hayes Camp: 10 and 12 August 2022

Point 2: Inspection Photo 11:

9 drums next to small shack on fixed wing apron are filled with water as ballast/anchors for fixed wings, now sprayed with "WATER" stencil.



C) Bullion Camp: 10 and 12 August 2022

Point 1: Inspection Photo 12 & 14:

Damaged drum covers removed, tent heating fuel drums and berms stored indoors.



Point 2: Inspection Photo 13:

Various drums lying next to the strip in pairs are drums filled with water as ballast/anchors for fixed wings, now sprayed with "WATER" stencil.



Point 4: Inspection Photo 15:

Greywater sump now has a berm surrounding it to keep rain water/snow melt out.



Appendix 2: 2021 INAC and NWB Site Inspection Report



☒ Original

☐ Follow-Up Report

CROWN LAND USE INSPECTION FORM

Permittee	Representative
North Country Gold Inc.	NA
Permit No. / Expiry	Representative's Title
N2021C0001	NA
Other Authorizations	Land / Other Authorizations
N2021C0002	
Date of Inspection	Inspector
September 5, 2021	Jonathan Mesher
Activities Inspected	
<div><input type="checkbox"/> Camp<input type="checkbox"/> Drilling<input type="checkbox"/> Mining<input type="checkbox"/> Construction<input type="checkbox"/> Reclamation<input type="checkbox"/> Fuel Storage</div> <div><input type="checkbox"/> Roads/hauling<input type="checkbox"/> Other:<input type="checkbox"/> Other:</div>	

Conditions:	A- Acceptable	U-Unacceptable	C-Concern	NI-Not Inspected	NA- Not applicable	
Land Use Permit :				Term No.*	Condition	Observation No.
31 (1)(a) Location and Area					A	
31 (1)(b) Time					A	
31 (1)(c) Equipment					A	
31 (1)(d) Methods and Techniques					A	
31 (1)(e) Type location, capacity and operation of facility					A	
31 (1)(f) Control or prevent of flooding, erosion, and subsidence of Land					A	
31 (1)(g) Use, storage, handling and disposal of chemical or toxic materials					A	
31 (1)(h) Wildlife and fisheries habitat					A	
31 (1)(i) Objects and places of recreation, scenic and ecological value					A	
31 (1)(k) Petroleum fuel storage					C	
31 (1)(m) Matters not inconsistent with the regulations					A	
Lease #_____:				Term No.*	Condition	Observation No.
Term						
Rent and Taxes						
Use						
Assignments						
Breach						
Termination						
Reclamation						
Environmental						
Fuel and Hazardous Chemicals						
Boundaries/Survey						
Improvements						
Access						
Indemnification						
Notices						
Archeology						
General						

*refers to specific terms and conditions found in the permit/lease in question.

SECTION 1	Comments (s.1)	<input type="checkbox"/> Non-Compliance with Permit, Act or Regs (s.2)	<input type="checkbox"/> Action Required (s.3)
-----------	----------------	--	--



Background

On September 5, 2021 I Jonathan Mesher A Resource Management Officer of CIRNAC conducted a Water licence inspection at Hayes Camp N66 39'30" W91 32'11", Bullion Camp N66 23'39" W93 06'55" and Crater Camp N67 22'19" W88 51'24" to ensure compliance with the terms and conditions of the permits N2021C0001 and N2021C0002.

A)Crater Camp

1. The main fuel cache secondary containment appeared to be full of water. See photos 1 and 2 for photos of containment berms full of water.
2. While on site at Crater Camp it did not appear that any of the tent heating fuel tanks have any covers installed, the secondary containment in place had significant water pooling. See photos 3 and 4 for tent heating fuel tanks.
3. it was noted that there is no berm surrounding the grey water sump, It does not appear that the sumps are constructed in a way to prevent melt water and/or rain water from flooding the sump . See photo 5 for the sump.
4. During the inspection the majority of secondary containment was either full with rainwater, damaged and had no secondary containment covers. See photos 3-9 for fuel storage mentioned.

B) Haynes Camp

1. While on site there was significant erosion near the sump, the licensee appears to be using fabric to slow the erosion. See photo 10 for the erosion noted.
2. There was approximately 12 barrels outside of containment near the wind sock and drill core storage, See photo 11 for the fuel outside of containment.

C) Bullion camp

1. while on site some tent heating fuel tanks covers installed were not operating as intended. See photos 12 for the covers referred to.
2. There was approximately 9 barrels outside of containment within this camp, see photos 13 and 14 for the fuel outside of containment.
3. While on site it appeared that the grey water sump and the outhouse sump appeared to be less than 31m away from pooling water. See photo 15 for the photos of the sump.
4. It was noted that there is no berm surrounding the grey water sump. It does not appear that the sumps are constructed in a way to prevent melt water and/or rain water from flooding the sump. See photo 15 for the sump.



SECTION 2


☐ Comments

☐ Non-Compliance with Permit, Act or Regs

Action Required

The following is a list of action required, the permittee is to provide a plan by November 25, 2021 to rectify the concerns noted in this section, once the concerns are remediated the licensee is to provide photos with a brief report detailing what work has been done.

- 1. The permittee is to ensure all fuel is stored in secondary containment that is able to contain 110% of the largest container. Condition 75 of the Permit N2021C0001 states the permittee shall use adequate secondary containment or a surface liner.
- 2. The licensee is to ensure all sumps are located a minimum of 31m from water. Section 29 states that the permittee shall not locate any sump within 31m of the high water mark.
- 3. The licensee is to remediate the erosion noted at Haynes Camp and install the appropriate erosion control measures. Condition 46, states that the permittee shall implement sediment and erosion control measures prior to and during operations to prevent sediment entry into water during spring thaw.

Licensee or Representative	Inspector's Name
	Jonathan Mesher
Signature	Signature
	
Date	Date
	October 22, 2021


Office Use Only: Follow-up report to be issued by Inspector

☐ Yes ☐ No

Date	Camera	Inspector	Authorization
	Sony Cyber-shot	J.Mesher	N2021C0001
Photo Log			
Photo 1			
			
Description: Containment full of water.			



Date	Camera	Inspector	Authorization
	Sony Cyber-shot	J.Mesher	N2021C0001
Photo Log			
Photo 2			
			
Description: pooling water on top of containment.			

Date	Camera	Inspector	Authorization
	Sony Cyber-shot	J.Mesher	N2021C0001
Photo Log			
Photo 3			
			
Description: heating stove tank without required covering.			



Date	Camera	Inspector	Authorization
	Sony Cyber-shot	J.Mesher	N2021C0001
Photo Log			
Photo 4			
			
Description: heating stove tank without required covering and damaged secondary containment.			

Date	Camera	Inspector	Authorization
	Sony Cyber-shot	J.Mesher	N2021C0001
Photo Log			
Photo 5			
			
Description: partially covered sump and damaged secondary containment.			



Date	Camera	Inspector	Authorization
	Sony Cyber-shot	J.Mesher	N2021C0001

Photo Log

Photo 6



Description: secondary containment full of water.

Date	Camera	Inspector	Authorization
	Sony Cyber-shot	J.Mesher	N2021C0001

Photo Log

Photo 7



Description: secondary containment full of water.



Date	Camera	Inspector	Authorization
	Sony Cyber-shot	J.Mesher	N2021C0001

Photo Log

Photo 8



Description: wood within the containment pushing down the containment wall.

Date	Camera	Inspector	Authorization
	Sony Cyber-shot	J.Mesher	N2021C0001

Photo Log

Photo 9



Description: damaged containment.



Date	Camera	Inspector	Authorization
	Sony Cyber-shot	J.Mesher	N2021C0001

Photo Log

Photo 10



Description: erosion near sump.

Date	Camera	Inspector	Authorization
	Sony Cyber-shot	J.Mesher	N2021C0001

Photo Log

Photo 11



Description: 12 barrels outside of containment.



Date	Camera	Inspector	Authorization
	Sony Cyber-shot	J.Mesher	N2021C0001

Photo Log
Photo 12



Description: tank covers open.

Date	Camera	Inspector	Authorization
	Sony Cyber-shot	J.Mesher	N2021C0001

Photo Log
Photo 13



Description: barrels outside of containment.



Date	Camera	Inspector	Authorization
	Sony Cyber-shot	J.Mesher	N2021C0001
Photo Log			
Photo 14			
			
Description: barrels outside of containment.			

Date	Camera	Inspector	Authorization
	Sony Cyber-shot	J.Mesher	N2021C0001
Photo Log			
Photo 15			
			
Description: sump without berms to prevent flooding.			