



AGNICO EAGLE

GOT, MEADOW RIVER, MEADOWBANK AND WHITE HILLS
EXPLORATION PROJECTS

2022 Annual Report

Screening Decision
15EN050

Prepared by:

Agnico Eagle Mines Limited, Exploration Division

January 2023

Submitted to:

Nunavut Impact Review Board

Contact:

Agnico Eagle Mines Ltd.

David Frenette

Environmental Coordinator

765 Chemin de la mine Goldex

Val-d'Or, Quebec, J9P7G4

david.frenette@agnicoeagle.com

Annual Report

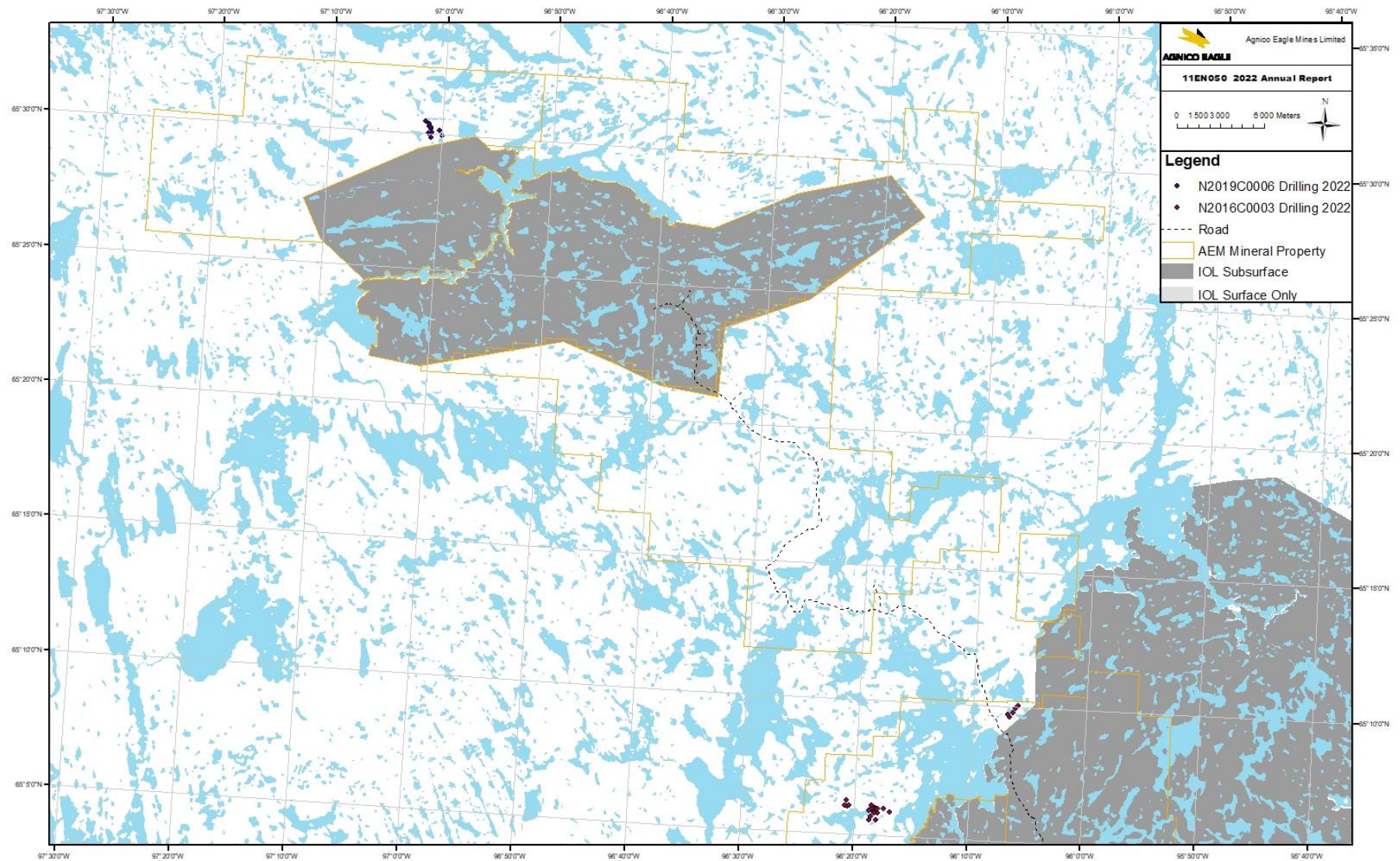
1) The Proponent shall submit a comprehensive annual report with copies provided to the Nunavut Impact Review Board and Government of Nunavut – Department of Environment, by March 31st of each year of permitted activities beginning March 31, 2016. The annual report must contain at least the following information:

a) A summary of activities undertaken for the year, including:

I. a map showing the approximate location of drill sites;

- *In the area covered by this decision, forty-two holes were drilled in 2022 on thirty-eight sites and mineral prospection done on foot with helicopter support was conducted. The drilling site locations are shown on Figure 1.*

Figure 1, Drilling Locations 2022

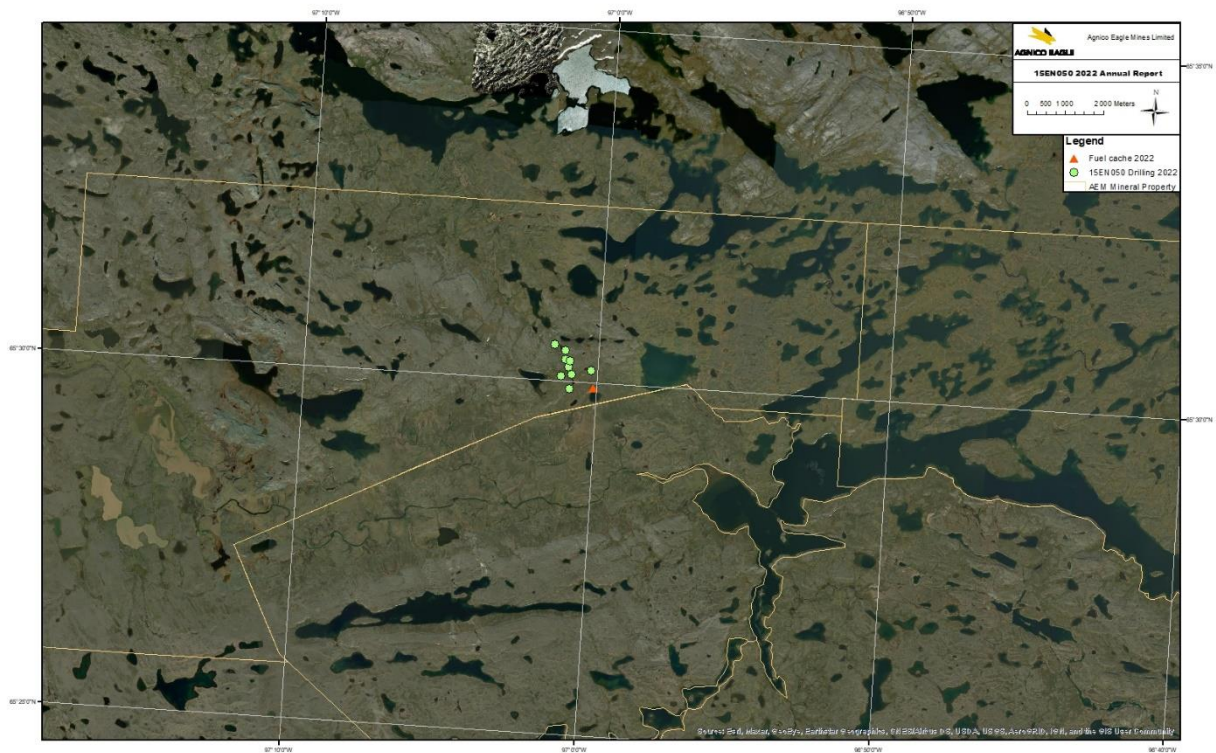


II. a map showing the location of the fuel cache;

- A fuel cache was installed at the following location: 65° 29' 56.791" N; 97° 0' 7.287". Eight fuel drums, a spill kit and a extinguisher were stored in a secondary containment (berm).

The fuel cache was removed on August 13th 2022 with material and drums transported back to the Whale Tail camp site.

Figure 2, Fuel Cache Location



III. a description of local hires, contracting opportunities and initiatives;

- *The exploration division maintains good relations with the local workforce. We hire personnel from different communities around Kivallik to join our team during exploration programs, either going through local companies (for example, Peter Expediting, Arctic-Fuel, Sarliaq Holdings, etc.) or hiring directly with Agnico Eagle through local Labor Pool and Inuit Employment departments.*
During field work operations, Inuit bear monitors are very often hired, their knowledge, experience and sharing of the life in the tundra brings respect and a different perspective to our work.

IV. flight altitudes, frequency of flights and anticipated flight routes;

- *For long-range transportation flights, we ask all pilots to follow a practice that sees the aircraft fly at a minimum of 610 m above ground level. Exceptions may exist during takeoff and landing, low-level ceiling conditions, high winds, or other risks to flight safety.*
- *Transport between Amaruq and the exploration areas and between Meadowbank and the exploration areas was done daily during the exploration period.*

b) A summary of the overview assessment conducted of the exploration areas;

- *Archaeologists conducted field visits in the summers from 2016 to 2022 to ensure archaeological site protection during exploration activities. Reports were submitted to the Government of Nunavut by the archaeologists.*
- *The project geologist or his delegate performed site visits before mobilizing the diamond drill to ensure that no sensitive sites were located in the vicinity of the exploration areas.*

c) A map with details of the winter travel routes that would be used for equipment transportation;

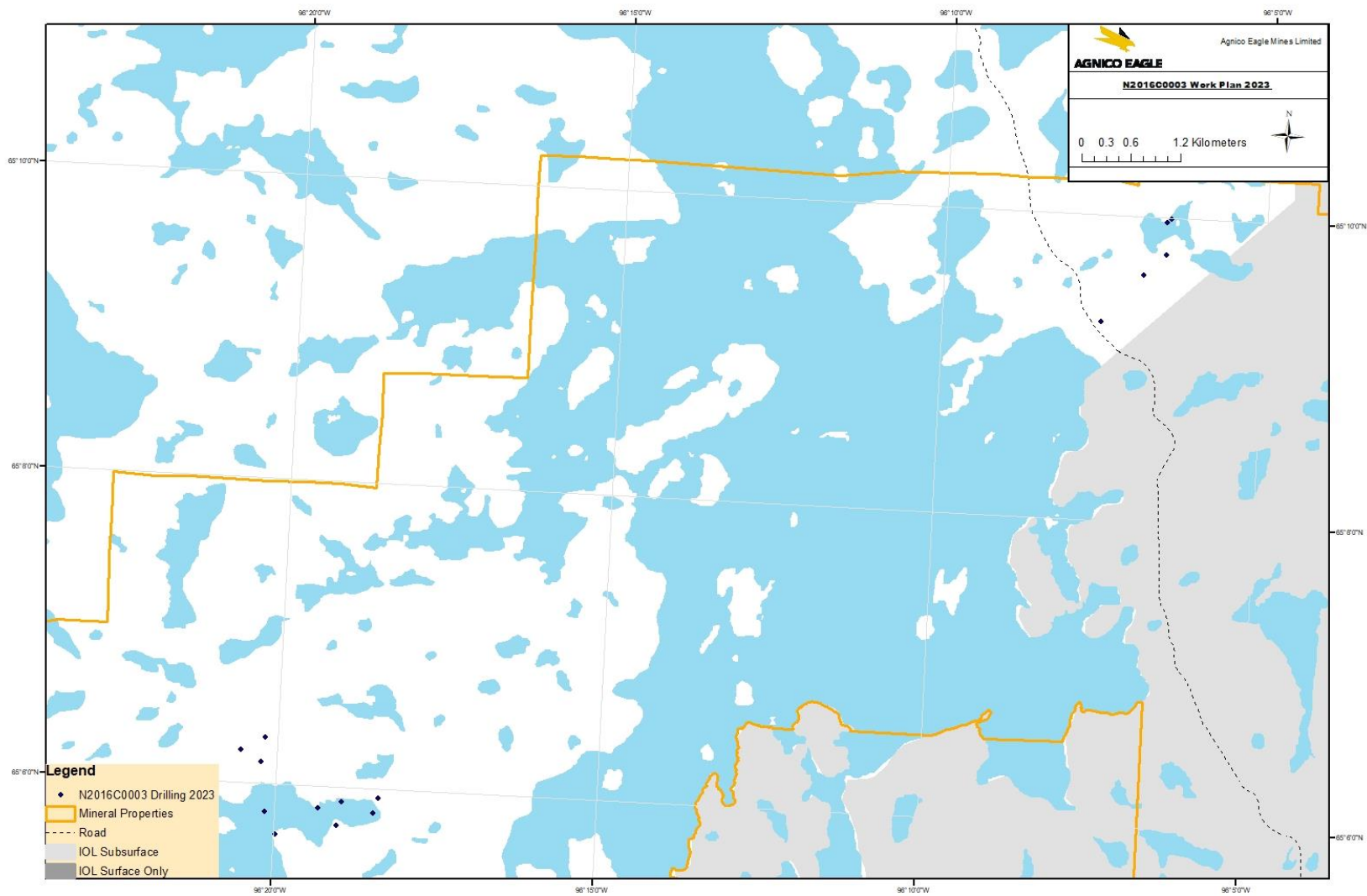
- *No winter travel routes were used in 2022 in the area covered by this decision.*

d) A work plan for the following year, including any progressive reclamation work undertaken;

- *A 15-hole drilling campaign is planned in the area covered by this decision in 2023, on Crown Land, under the land use permit N2016C0003 at locations*

shown on Figure 3. Prospecting, mapping and geophysical surveying could also be conducted on the entire mineral properties covered by this decision. No exploration camp or fuel cache is planned to be installed.

Figure 3 Drilling proposal 2023



e) A summary of community consultations undertaken throughout the year, providing copy of materials presented to community members, a description of issues and concerns raised, discussions with community members and advice offered to the company as well as any follow-up actions that were required or taken to resolve any concerns expressed about the project proposal;

- *February 16th and 17th 2022, a meeting with Baker Lake Elders was conducted with the objective of mapping/protecting traditional use and placenames. exploration activities.*
- *April 4th, 2022 a community meeting in Baker Lake to present the 2022 exploration program.*
- *April 18th, 2022 a presentation to BLHTO, Elders, Berry harvesters; to present an update of the 2022 exploration activities.*
- *July 08, 2022 an update, including the exploration activities, was presented to the SAO, Mayor and Economic development coordinator of Chesterfield.*
- *July 13th, 2022 a presentation to Mayor, SAO and public works from Baker Lake was given to present the summer drilling campaign.*
- *August 20th, 2022 annual meeting with Kivalliq Elders Advisory Committee. Discussion about traditional names at various exploration sites and discussion about impacts on water.*
- *August 24th, 2022 meeting with Baker Lake women's group to identify favourite community berry harvesting areas and identification of favourite water sources.*
- *October 18th, 2022, Presentation/discussion with Kivalliq Mayors. Presentation to discuss concerning project lifecycle, training opportunities, role to help find more gold at Amaruq and Meadowbank.*
- *November 14th, 2022, Discussion with Kivalliq Elders Executive Committee about mine, training opportunities, including drillers.*

f) A log of instances in which community residents occupy or transit through the project area for the purpose of traditional land use or harvesting. This log should include the location and number of people encountered, activity being undertaken (e.g., berry picking, fishing, hunting, camping, etc.), date and time, and any mitigation measures or adaptive management undertaken to prevent disturbance;

- *No community residents occupying or transiting were seen in 2022 during the exploration activities in the areas covered by this decision.*

g) A discussion of issues related to wildlife and environmental monitoring, including the number of cease-work orders required as a result of proximity to caribou;

- *No issue related to wildlife and environmental monitoring in the areas covered by this decision during exploration activities.*

h) A brief summary of Wildlife Monitoring and Mitigation Plan (WMMP) results as well as any mitigation actions that were undertaken. In addition, the Proponent shall maintain a record of wildlife observations while operating within the project area and include it as part of the summary report. The summary report based on wildlife observations should include the following:

(1) Locations (i.e., latitude and longitude), species, number of animals, a description of the animal activity, and a description of the gender and age of animals if possible.

- *Table 1 details wildlife seen during exploration activities on the GOT mineral property*

Table 1, Wildlife Monitoring 2022

Date	Wildlife species	Number	Location
2022-06-30	Grizzly	1	GOT mineral property
2022-07-08	Falcon	1	GOT mineral property
2022-07-10	Grizzly	3	GOT mineral property
2022-07-14	Grizzly	1	GOT mineral property
2022-07-18	Grizzly	1	GOT mineral property
2022-07-19	Grizzly/Muskox/Bald Eagle	1	GOT mineral property
2022-07-21	Grizzly	1	GOT mineral property
2022-07-23	Wolf	1	GOT mineral property
2022-07-24	Grizzly	1	GOT mineral property
2022-07-24	Wolf	1	GOT mineral property
2022-07-27	Wolf	2	GOT mineral property
2022-07-27	Caribou	10	GOT mineral property
2022-07-27	Caribou	Thousands	GOT mineral property >6km north from activities
2022-07-30	Caribou	40 to 50	GOT mineral property >20km east from activities
2022-07-31	Wolf	4	GOT mineral property
2022-07-31	Grizzly	1	GOT mineral property
2022-07-31	Muskox	20	GOT mineral property >6km south from activities
2022-08-04	Caribou	20	GOT mineral property
2022-08-04	Caribou	2	GOT mineral property
2022-08-05	Caribou	3	GOT mineral property
2022-08-05	Caribou	2	GOT mineral property
2022-08-05	Caribou	6	GOT mineral property
2022-08-05	Caribou	4	GOT mineral property
2022-08-05	Caribou	3	GOT mineral property
2022-08-05	Caribou	12	GOT mineral property

(2) Prior to conducting project activities, the Proponent should map the location of any sensitive wildlife sites such as denning sites, calving areas, caribou crossing sites, and raptor nests in the project area, and identify the timing of critical life history events (i.e., calving, mating, denning and nesting).

- *A visual inspection of the working sites and surrounding areas was conducted before exploration activities started to ensure that no sensitive sites were present in the vicinity of the exploration activities.*

(3) Additionally, the Proponent should indicate potential impacts from the project, and ensure that operational activities are managed and modified to avoid impacts on wildlife and sensitive sites.

- *Spill Contingency Plan, Wildlife Protection and Response Plan, archaeological field investigations, pre-drilling field inspection and other good practices are in place to reduce potential impacts of the exploration activities. This includes, among others, to respect protection buffers around sensitive features, to have working practices to reduce the risk of spills, to have procedures in place in case of a spill, to have procedures during caribou migration, etc.*

i) An analysis of the effectiveness of mitigation measures for wildlife as proposed in the WMMP;

- *No issues related to wildlife occurred during the exploration activities and monitoring of distance with caribou ensured the respect of obligations.*

j) Summary of any heritage sites encountered during the exploration activities, any follow-up action or reporting required as a result and how project activities were modified to mitigate impacts on the heritage sites;

- *The archaeologists found archaeological sites during the field investigations in 2016 to 2022. These sites are described in the reports submitted to the Government of Nunavut by the archaeologists, and protection buffers are respected during exploration activities.*

k) Summary of its knowledge of Inuit land use in/near the project area and explain how project activities were modified to mitigate impacts on Inuit land use;

- *Protection buffers are respected around the archaeological and other known sites to ensure mitigation of impacts on the Inuit Land Use. Frequent meetings with the various stakeholders help to mitigate the impacts on Inuit Land Use.*

I) A summary of how the Proponent has complied with conditions contained within this Screening Decision, and all conditions as required by other authorizations associated with the project proposal.

- *Procedures and plans were created to ensure compliance with the conditions associated with this decision and other licenses and permits. The Spill Contingency Plan and the Wildlife Protection and Response Plan describe mitigation measures applied in certain defined situations to ensure prompt actions. Annual reports including details on Agnico Eagle's compliance with obligations are submitted to regulators, including Nunavut Water Board, Crown-Indigenous Relations and Northern Affairs Canada and Kivalliq Inuit Association. Compliance inspections by the Kivalliq Inuit Association and by CIRNAC are conducted regularly in the areas where exploration activities are conducted.*