



Keewatin Glacial Dynamics Activity

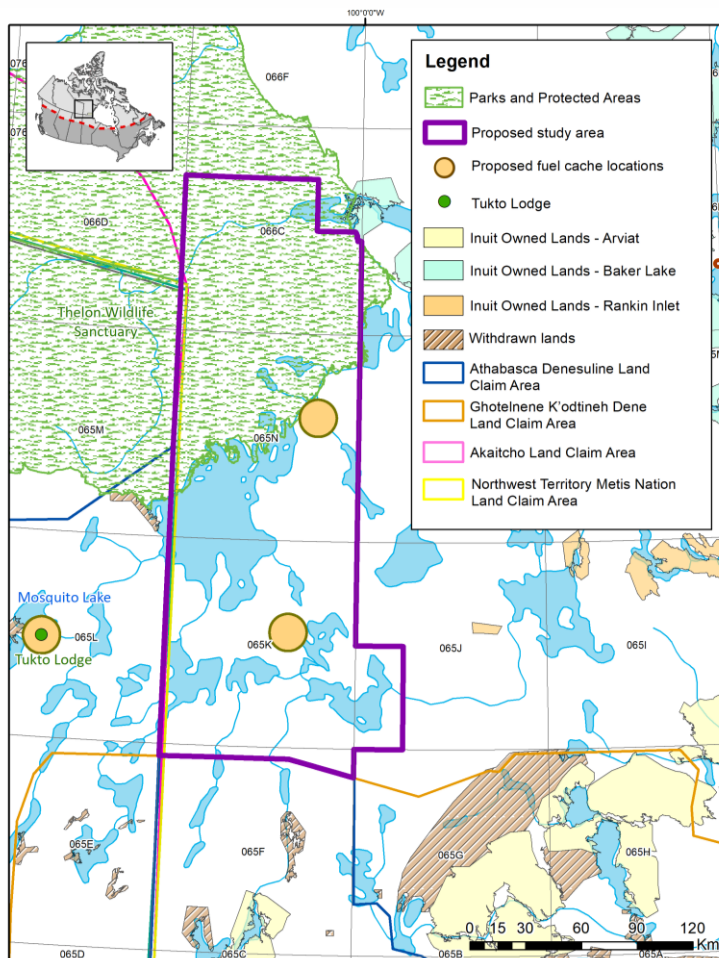
This proposed activity aims to improve understanding of the how the landscape in western Nunavut has been affected by the movement and flow of glaciers. Improving the glacial geological knowledge of this region can support decision-making for environmental assessments, archeology, infrastructure, mineral exploration, permafrost studies, and assessing past changes in sea level and climate.

Proposed field work would be conducted over 14 days in late July-early August 2023. The 4-person research team, and potentially a locally hired assistant or wildlife monitor, would stay at Tukto Lodge at Mosquito Lake in NWT, as it is the closest commercial accommodation to the study area. Research would only be conducted in Nunavut. The northernmost portion of the fieldwork is within the Thelon Wildlife Sanctuary.



Sediment Sampling

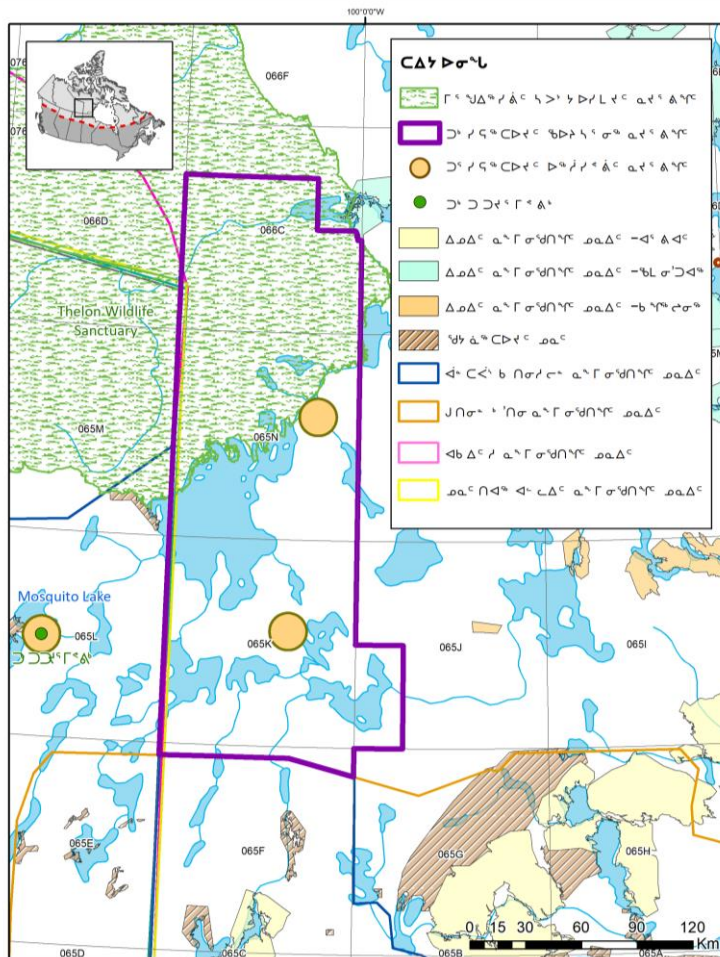
The proposed work would involve researchers travelling by helicopter to sites making observations and collecting samples of rocks and sediment. Sediment sampling involves digging holes by hand shovel and bagging approximately half of a 5-gallon pail of soil material for analysis in the lab. Rock sampling involves chipping off a roughly fist-sized piece from bedrock or boulders using a hammer and chisel or power saw.



P^acⁱfⁱs Iⁿt^er Δ^eo^m b^en^edⁱc^ti^on^em Aⁿn^un^ti^um

[illegible][illegible]

Δ⁹Τ⁹σ⁹ ΞΔ⁹Υ⁹Π⁹Σ⁹Ω⁹

[illegible]