



NIRB Application for Screening #125795

Sinaasiurvik Gathering Place

Application Type: New

Project Type: Infrastructure

Application Date: 4/11/2023 10:09:03 AM

Period of operation: from 0001-01-01 to 0001-01-01

Proposed Authorization: from 0001-01-01 to 0001-01-01

Project Proponent: Chris Doucette
Parks Canada Agency
PO Box 278
Iqaluit Nunavut x0a0h0
Canada
Phone Number:: 902-940-5157, Fax Number::

DETAILS

Non-technical project proposal description

English:

Parks Canada would like to construct a gathering place in the Sinaasiurvik area on the Borden peninsula of Baffin Island, within Sirmilik National Park, either at what will be referred to as the main site, located within an archaeological site, or at what will be referred to as the east site (figure 1). This project aims at working with the community of Arctic Bay to address the need for a cabin to support safe travel in the area and to support other community activities, knowledge sharing, education, research, monitoring, site protection and visitor activities at the archaeological site. Community consultations have been taking place with Arctic Bay community members, Joint Inuit-Government Park Management Committee support has been provided for the project and a Parks Canada archaeologist has been providing advice. The gathering place, once completed, will contain a multi-use cabin, a cultural learning facility, outdoor sitting area, fire pit, privy and a flagpole. All the gathering place infrastructure and impacted area will not be greater than 480 m². The Sinaasiurvik area is close to the floe edge and has been an important area to Inuit, as well as Thule and Dorset cultures, for more than a millennium. The gathering place will be accessible in multiple ways:

- Main access to the site will be by snowmobile from April to June. This access will be almost entirely by the local Inuit community of Arctic Bay with occasional access by Parks Canada staff.
- The site will have a delineated helicopter landing zone. Helicopter use will be limited to Parks Canada operations and projects (including projects involving local Inuit) and used mainly in the summer. Visitor (non-Inuit) will not be allowed to access to the site by helicopter. Site access by helicopter will likely only occur 2 to 4 times per year.
- During ice free times the site can be accessed by boat (mid-July to September). Visitors (non-Inuit) will be accompanied by a trained local guide or Parks Canada staff. Access by boat will be limited to August and September.
- Access by boat is expected to be minimal (~1-5 trips per years) The site will be used in multiple ways:

- The multi-use cabin, within the gathering place, will allow local Inuit, Nauttigsuqtiit and Parks Canada staff to have a place of refuge from wildlife and poor weather conditions; this cabin will be complete with sleeping and cooking areas and will be able to accommodate multiple people and eliminate the need for camping or cooking outside when conditions are unfavorable.
- The gathering place will allow for Parks Canada and Nauttigsuqtiit to have a base of operations to protect, monitor and interpret the cultural site and monitor activities that are taking place in the area (i.e., ship traffic, outfitters, area use).
- Inuit elders will be able to access the site safely and easily. This will allow the site to host gatherings where Inuit Elders can transfer knowledge to youth. The outdoor seating area and fire pit will provide a environment for the sharing of knowledge and the cultural learning facility will offer an area out of the elements to share knowledge when conditions are not favorable outside.
- The gathering place site will give the ability for Parks Canada to facilitate in-park meetings with the Sirmilik Joint Park Management Committee (SJPMC), Inuit Knowledge Working Group (IKWG) and gatherings of local groups that would like to conduct knowledge sharing. The design of the facility, being within the cultural site, will provide the ideal location for Inuit storytelling and presenting of Inuit culture to park visitors (non-Inuit).
- Visitors (non-Inuit) to the site must be accompanied by a guide and a short training course will be offered to local Arctic Bay Inuit to become these guides. In this way, the site will have an economic benefit to local Inuit and create opportunities for visitors (non-Inuit) to access the site from Arctic Bay.
- The gathering place can also provide a base for future research, such as Inuit knowledge studies, that can be conducted in the area.
- Inuit Guardians doing patrols in the area of Sinaasiurvik can utilize the multi-use cabin to allow them to patrol the area more safely. The Sinaasiurvik Gathering Place Project will have five phases

Phase 1: Delivery of multi-use cabin to the Sinaasiurvik site. The multi-use cabin is a prefabricated building that is in multiple sections and ready for assembly. The building sections will be brought from Arctic Bay to Sinaasiurvik by snowmobile and qamutik in late May of 2023.

Phase 2: Assembling of the multi-use cabin. In August of 2023, Parks Canada staff and Arctic Bay community members will go Sinaasiurvik, erect a temporary camp and assemble the multi-use cabin over a period of ten days. All work and impact will be contained to a zone delineated by an archeologist as suitable for the construction.

Phase 3: Delivery of cultural learning center, flagpole, outdoor sitting area, privy and above ground fire pit to the Sinaasiurvik site. The delivery of the listed items to Sinaasiurvik will be done by snowmobile and qamutik and completed in late May of 2024, while it is possible to travel on the sea ice.

Phase 4: Assembling of cultural learning center and outdoor sitting area, erection of flagpole, privy and above ground fire pit. In August of 2024, Parks Canada staff and Arctic Bay community members will go Sinaasiurvik, erect a temporary camp next to the multi-use cabin and over a period of ten days will assembled all the listed items. All work and impact will be contained to a zone delineated by an archeologist as suitable for the construction.

Phase 5: Ongoing use and maintenance. The gathering place will be in used indefinitely.

French: N/A

[illegible]

[illegible]

Post-Closure Phase: from to

Activities

Location	Activity Type	Land Status	Site history	Site archaeological or paleontological value	Proximity to the nearest communities and any protected areas
Sinaasiurvik, Sirmilik National Park	Camp	Crown	The site has been a cultural and hunting/camping site for over a thousand years. The site continues to this day to be a camping area for Inuit from Arctic Bay when hunting at the nearby floe edge. This project aims at working with the community of Arctic Bay to address the need for a cabin to support safe travel in the area and to support other community activities, knowledge sharing, education, research, monitoring, site protection and visitor activities at the archaeological site.	The Sinaasiurvik Gathering Place would be located in the Sinaasiurvik area on the Borden Peninsula of Baffin Island, within Sirmilik National Park, at either a site located within an archaeological site or at a site east of that, also near archaeological resources. Parks Canada has prepared a Statement of Cultural Resource Impact Analysis for this proposed project because of its proximity to cultural resources.	Arctic Bay

Community Involvement & Regional Benefits

Community	Name	Organization	Date Contacted
Arctic Bay	HTO Chair	Ikajutit HTO	2013-04-15
Arctic Bay	JPMC	Sirmilik National Park Joint Park Management Committee	2015-02-17
Arctic Bay	HTO Chair	Ikajutit HTO	2014-05-07
Arctic Bay	JPMC	Sirmilik National Park Joint Park Management Committee	2019-10-25
Arctic Bay	JPMC	Sirmilik National Park Joint Park Management Committee	2020-12-16
Arctic Bay	JPMC	Sirmilik National Park Joint Park Management Committee	2021-03-10
Arctic Bay	HTO Chair	Ikajutit HTO	2021-04-20
Arctic Bay	Nauttisuqtiit/QIA	Nauttisuqtiit/QIA	2021-05-19
Arctic Bay	Arctic Bay Adventures	Arctic Bay Adventures	2021-09-21
Arctic Bay	HTA, SJPMC, and Nauttisuqtiit, and youth representatives	HTA, SJPMC, and Nauttisuqtiit, and youth representatives	2021-07-23
Arctic Bay	JPMC	Sirmilik National Park Joint Park Management	2022-01-11

		Committee	
Arctic Bay	JPMC	Sirmilik National Park Joint Park Management Committee	2022-01-26
Arctic Bay	JPMC	Sirmilik National Park Joint Park Management Committee	2022-02-10
Arctic Bay	Mayor, SAO and Financial Officer of Arctic Bay and Arctic Bay Adventures	Mayor, SAO and Financial Officer of Arctic Bay and Arctic Bay Adventures	2023-02-27
Arctic Bay	Kopic Attagutsiak	Community Member	2023-02-28
Arctic Bay	HTO Chair	Ikajutit HTO	2023-03-06

Authorizations

Indicate the areas in which the project is located:

North Baffin

Authorizations

Regulatory Authority	Authorization Description	Current Status	Date Issued / Applied	Expiry Date
Parks Canada	Authorization from the Field Unit Superintendent	Applied, Decision Pending		

Project transportation types

Transportation Type	Proposed Use	Length of Use
Air	Helicopter	
Water	Boat, Snowmachines on sea ice	
Land	Snowmachines	

Project accomodation types

Temporary Camp

Permanent Camp

Material Use

Equipment to be used (including drills, pumps, aircraft, vehicles, etc)

Equipment Type	Quantity	Size - Dimensions	Proposed Use
Aircraft	1	Helicopter	Transport of personnel and some equipment
Electrical Tools	1-5	Drills	Assemble cabins and other infrastructure
Generator	1	Generator	Charge tools, Satellite phones, Inreach devices
Heater	1	Portable propane heater	Provide heat for personnel
Various manual tools and hardware	See attached detailed project description	See attached detailed project description	Assemble cabins and other infrastructure
Snowmachines	6	Snowmachines+qamutiit	Transport of equipment

Detail Fuel and Hazardous Material Use

Detail fuel material use:	Fuel Type	Number of containers	Container Capacity	Total Amount	Units	Proposed Use
Gasoline	fuel	30	50	1500	Liters	Snowmachine and Generator
White Gas/Naphtha	fuel	3	10	30	Liters	Cooking
Propane	fuel	2	20	40	Liters	Heating kitchen tent
Bear spray	hazardous	5	0.225	1.125	Kg	Polar bear safety
Household Cleaning Products	hazardous	2	0.228	0.456	Liters	Cleaning surfaces
Silicone caulk	hazardous	2	0.3	0.6	Liters	Cabin maintenance

Water Consumption

Daily amount (m3)	Proposed water retrieval methods	Proposed water retrieval location
0	Scooping from nearby water source in 4 to 20 L water jugs	Creek adjacent to Sinaasiurvik Gathering Place site, within Sirmilik National Park boundary

Waste

Waste Management

Project Activity	Type of Waste	Projected Amount Generated	Method of Disposal	Additional treatment procedures
Camp	Greywater	500L	A shallow sump for grey water will be dug outside of the archeological site and a minimum distance of 50 m from Admiralty Inlet, the stream east of the proposed main project site and from all sleeping areas. All grey water will be strained and then disposed of at this location. Biodegradable soaps will be used for the washing of people and dishes.	n/a
Camp	Sewage (human waste)	500L	Human waste will be collected in “Wag Bags” and stored in bear proof containers. The waste will then be flown to Arctic Bay for disposal at the end of both phase 2 and 4, as well as on a regular basis during ongoing phase 5.	n/a

Environmental Impacts:

See attached Project Description. Key predicted impacts are related to cultural resources, cliff nesting migratory birds and Arctic Bay community use of the area. Mitigations for cultural resource impacts are being developed as part of a Parks Canada Statement of Cultural Resource Impact Analysis following a site visit by an archaeologist, including a path to be demarcated to avoid impacts on cultural resources and designating a helicopter landing area. Standard mitigations to protect cliff nesting birds include minimum distances aircraft need to maintain from the Baillarge Bay Seabird Colony. Consultations and engagement of Inuit community members in Arctic Bay has been ongoing for this proposed project to address community interests and concerns. Mitigations for camping activities will include a spill kit to be available on-site and waste to be packed in waste bags and transported out to Arctic Bay for proper disposal.

Additional Information

SECTION A1: Project Info

SECTION A2: Allweather Road

SECTION A3: Winter Road

SECTION B1: Project Info

SECTION B2: Exploration Activity

SECTION B3: Geosciences

SECTION B4: Drilling

SECTION B5: Stripping

SECTION B6: Underground Activity

SECTION B7: Waste Rock

SECTION B8: Stockpiles

SECTION B9: Mine Development

SECTION B10: Geology

SECTION B11: Mine

SECTION B12: Mill

SECTION C1: Pits

SECTION D1: Facility

SECTION D2: Facility Construction

SECTION D3: Facility Operation

SECTION D4: Vessel Use

SECTION E1: Offshore Survey

SECTION E2: Nearshore Survey

SECTION E3: Vessel Use

SECTION F1: Site Cleanup

SECTION G1: Well Authorization

SECTION G2: Onland Exploration

SECTION G3: Offshore Exploration

SECTION G4: Rig

SECTION H1: Vessel Use

SECTION H2: Disposal At Sea

SECTION I1: Municipal Development

Description of Existing Environment: Physical Environment

See attached documents.

Description of Existing Environment: Biological Environment

See attached documents.

Description of Existing Environment: Socio-economic Environment

See attached documents.

Miscellaneous Project Information

The project is proposed to take place within a cultural site or near cultural resources. Parks Canada has prepared a Statement of Cultural Resource Impact Analysis for this proposed project because of its proximity to cultural resources.

Identification of Impacts and Proposed Mitigation Measures

See attached documents.

Cumulative Effects

See attached documents.

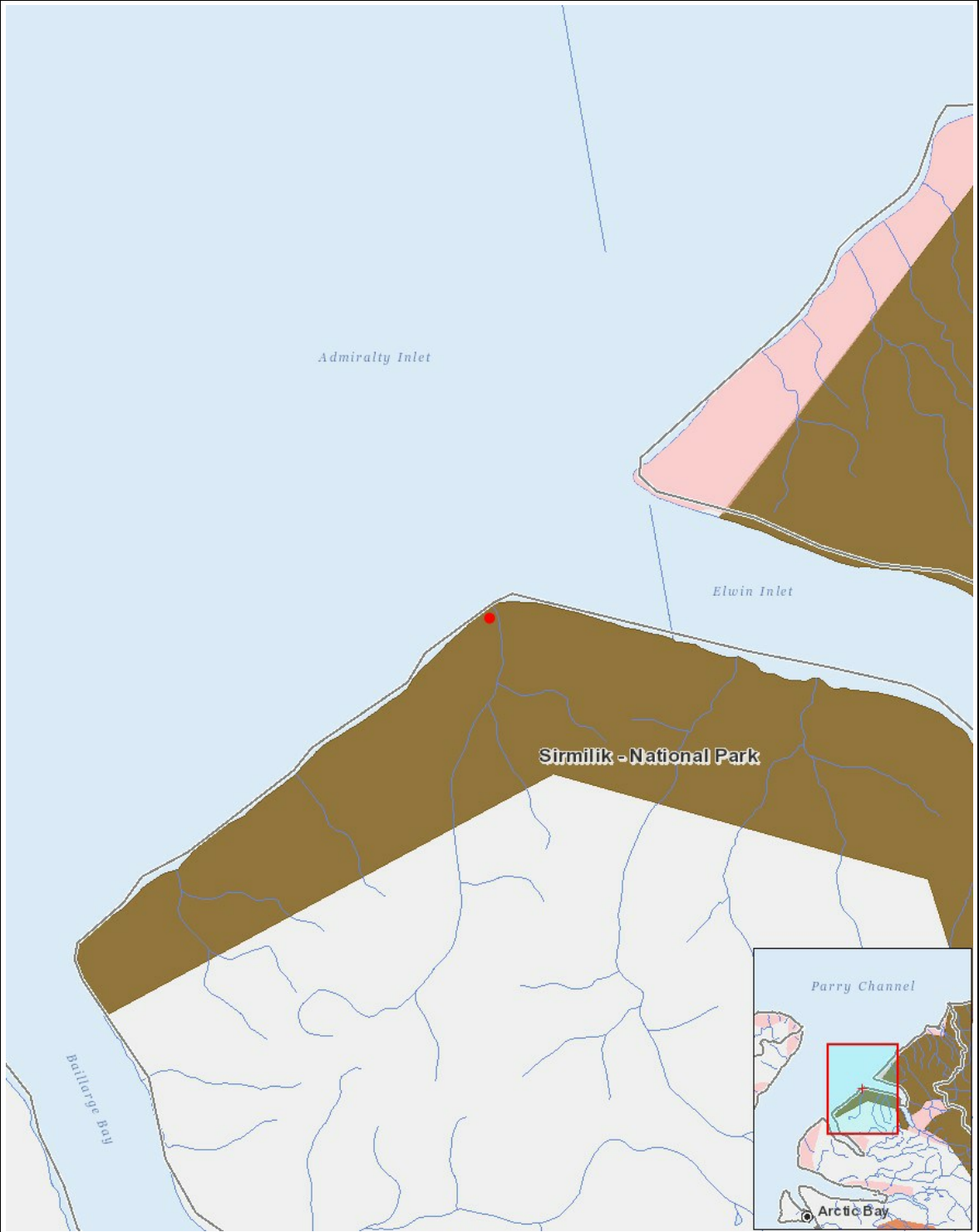
Impacts

Identification of Environmental Impacts

|--|--|--|--|--|--|--|--|--|--|--|--|--|--|--|--|--|--|--|--|--|--|--|--|--|--|--|--|--|--|--|--|--|--|--|--|--|--|--|--|--|--|--|--|--|--|--|--|--|--|--|--|--|--|--|--|--|--|--|--|--|--|--|--|--|--|--|--|--|--|--|--|--|--|--|--|--|--|--|--|--|--|--|--|--|--|--|--|--|--|--|--|--|--|--|--|--|--|--|--|--|--|--|--|--|--|--|--|--|--|--|--|--|--|--|--|--|--|--|--|--|--|--|--|--|--|--|--|--|--|--|--|--|--|--|--|--|--|--|--|--|--|--|--|--|--|--|--|--|--|--|--|--|--|--|--|--|--|--|--|--|--|--|--|--|--|--|--|--|--|--|--|--|--|--|--|--|--|--|--|--|--|--|--|--|--|--|--|--|--|--|--|--|--|--|--|--|--|--|--|--|--|--|--|--|--|--|--|--|--|--|--|--|--|--|--|--|--|--|--|--|--|--|--|--|--|--|--|--|--|--|--|--|--|--|--|--|--|--|--|--|--|--|--|--|--|--|--|--|--|--|--|--|--|--|--|--|--|--|--|--|--|--|--|--|--|--|--|--|--|--|--|--|--|--|--|--|--|--|--|--|--|--|--|--|--|--|--|--|--|--|--|--|--|--|--|--|--|--|--|--|--|--|--|--|--|--|--|--|--|--|--|--|--|--|--|--|--|--|--|--|--|--|--|--|--|--|--|--|--|--|--|--|--|--|--|--|--|--|--|--|--|--|--|--|--|--|--|--|--|--|--|--|--|--|--|--|--|--|--|--|--|--|--|--|--|--|--|--|--|--|--|--|--|--|--|--|--|--|--|--|--|--|--|--|--|--|--|--|--|--|--|--|--|--|--|--|--|--|--|--|--|--|--|--|--|--|--|--|--|--|--|--|--|--|--|--|--|--|--|--|--|--|--|--|--|--|--|--|--|--|--|--|--|--|--|--|--|--|--|--|--|--|--|--|--|--|--|--|--|--|--|--|--|--|--|--|--|--|--|--|--|--|--|--|--|--|--|--|--|--|--|--|--|--|--|--|--|--|--|--|--|--|--|--|--|--|--|--|--|--|--|--|--|--|--|--|--|--|--|--|--|--|--|--|--|--|--|--|--|--|--|--|--|--|--|--|--|--|--|--|--|--|--|--|--|--|--|--|--|--|--|--|--|--|--|--|--|--|--|--|--|--|--|--|--|--|--|--|--|--|--|--|--|--|--|--|--|--|--|--|--|--|--|--|--|--|--|--|--|--|--|--|--|--|--|--|--|--|--|--|--|--|--|--|--|--|--|--|--|--|--|--|--|--|--|--|--|--|--|--|--|--|--|--|--|--|--|--|--|--|--|--|--|--|--|--|--|--|--|--|--|--|--|--|--|--|--|--|--|--|--|--|--|--|--|--|--|--|--|--|--|--|--|--|--|--|--|--|--|--|--|--|--|--|--|--|--|--|--|--|--|--|--|--|--|--|--|--|--|--|--|--|--|--|--|--|--|--|--|--|--|--|--|--|--|--|--|--|--|--|--|--|--|--|--|--|--|--|--|--|--|--|--|--|--|--|--|--|--|--|--|--|--|--|--|--|--|--|--|--|--|--|--|--|--|--|--|--|--|--|--|--|--|--|--|--|--|--|--|--|--|--|--|--|--|--|--|--|--|--|--|--|--|--|--|--|--|--|--|--|--|--|--|--|--|--|--|--|--|--|--|--|--|--|--|--|--|--|--|--|--|--|--|--|--|--|--|--|--|--|--|--|--|--|--|--|--|--|--|--|--|--|--|--|--|--|--|--|--|--|--|--|--|--|--|--|--|--|--|--|--|--|--|--|--|--|--|--|--|--|--|--|--|--|--|--|--|--|--|--|--|--|--|--|--|--|--|--|--|--|--|--|--|--|--|--|--|--|--|--|--|--|--|--|--|--|--|--|--|--|--|--|--|--|--|--|--|--|--|--|--|--|--|--|--|--|--|--|--|--|--|--|--|--|--|--|--|--|--|--|--|--|--|--|--|--|--|--|--|--|--|--|--|--|--|--|--|--|--|--|--|--|--|--|--|--|--|--|--|--|--|--|--|--|--|--|--|--|--|--|--|--|--|--|--|--|--|--|--|--|--|--|--|--|--|--|--|--|--|--|--|--|--|--|--|--|--|--|--|--|--|--|--|--|--|--|--|--|--|--|--|--|--|--|--|--|--|--|--|--|--|--|--|--|--|--|--|--|--|--|--|--|--|--|--|--|--|--|--|--|--|--|--|--|--|--|--|--|--|--|--|--|--|--|--|--|--|--|--|--|--|--|--|--|--|--|--|--|--|--|--|--|--|--|--|--|--|--|--|--|--|--|--|--|--|--|--|--|--|--|--|--|--|--|--|--|--|--|--|--|--|--|--|--|--|--|--|--|--|--|--|--|--|--|--|--|--|--|--|--|--|--|--|--|--|--|--|--|--|--|--|--|--|--|--|--|--|--|--|--|--|--|--|--|--|--|--|--|--|--|--|--|--|--|--|--|--|--|--|--|--|--|--|--|--|--|--|--|--|--|--|--|--|--|--|--|--|--|--|--|--|--|--|--|--|--|--|--|--|--|--|--|--|--|--|--|--|--|--|--|--|--|--|--|--|--|--|--|--|--|--|--|--|--|--|--|--|--|--|--|--|--|--|--|--|--|--|--|--|--|--|--|--|--|--|--|--|--|--|--|--|--|--|--|--|--|--|--|--|--|--|--|--|--|--|--|--|--|--|--|--|--|--|--|--|--|--|--|--|--|--|--|--|--|--|--|--|--|--|--|--|--|--|--|--|--|--|--|--|--|--|--|--|--|--|--|--|--|--|--|--|--|--|--|--|--|--|--|--|--|--|--|--|--|--|--|--|--|--|--|--|--|--|--|--|--|--|--|--|--|--|--|--|--|--|--|--|--|--|--|--|--|--|--|--|--|--|--|--|--|--|--|--|--|--|--|--|--|--|--|--|--|--|--|--|--|--|--|--|--|--|--|--|--|--|--|--|--|--|--|--|--|--|--|--|--|--|--|--|--|--|--|--|--|--|

(P = Positive, N = Negative and non-mitigatable, M = Negative and mitigatable, U = Unknown)

Project Location



List of Project Geometries

1	point	Sinaasiurvik, Sirmilik National Park
---	-------	--------------------------------------