



ᐅᓂᑦ ᐃᕈᔭᒃ:

Parks Canada would like to construct a gathering place on the Borden peninsula of Baffin Island, within Sirmilik National Park, either at what will be referred to as the main site, located within an archaeological site, or at what will be referred to as the east site (figure 1). This project aims at working with the community of Arctic Bay to address the need for a cabin to support safe travel in the area and to support other community activities, knowledge sharing, education, research, monitoring, site protection and visitor activities at the archaeological site. Community consultations have been taking place with Arctic Bay community members, Joint Inuit-Government Park Management Committee support has been provided for the project and a Parks Canada archaeologist has been providing advice. The gathering place, once completed, will contain a multi-use cabin, a cultural learning facility, outdoor sitting area, fire pit, privy and a flagpole. All the gathering place infrastructure and impacted area will not be greater than 480 m<sup>2</sup>. The Sinaasiurvik area is close to the floe edge and has been an important area to Inuit, as well as Thule and Dorset cultures, for more than a millennium. The gathering place will be accessible in multiple ways: •Main access to the site will be by snowmobile from April to June. This access will be almost entirely by the local Inuit community of Arctic Bay with occasional access by Parks Canada staff. •The site will have a delineated helicopter landing zone. Helicopter use will be limited to Parks Canada operations and projects (including projects involving local Inuit) and used mainly in the summer. Visitor (non-Inuit) will not be allowed to access to the site by helicopter. Site access by helicopter will likely only occur 2 to 4 times per year. •During ice free times the site can be accessed by boat (mid-July to September). Visitors (non-Inuit) will be accompanied by a trained local guide or Parks Canada staff. Access by boat will be limited to August and September. •Access by boat is expected to be minimal (~1-5 trips per years) The site will be used in multiple ways: •The multi-use cabin, within the gathering place, will allow local Inuit, Nauttisuqtiit and Parks Canada staff to have a place of refuge from wildlife and poor weather conditions; this cabin will be complete with sleeping and cooking areas and will be able to accommodate multiple people and eliminate the need for camping or cooking outside when conditions are unfavorable. •The gathering place will allow for Parks Canada and Nauttisuqtiit to have a base of operations to protect, monitor and interpret the cultural site and monitor activities that are taking place in the area (i.e., ship traffic, outfitters, area use). •Inuit elders will be able to access the site safely and easily. This will allow the site to host gatherings where Inuit Elders can transfer knowledge to youth. The outdoor seating area and fire pit will provide a environment for the sharing of knowledge and the cultural learning facility will offer an area out of the elements to share knowledge when conditions are not favorable outside. •The gathering place site will give the ability for Parks Canada to facilitate in-park meetings with the Sirmilik Joint Park Management Committee (SJPMC), Inuit Knowledge Working Group (IKWG) and gatherings of local groups that would like to conduct knowledge sharing. The design of the facility, being within the cultural site, will provide the ideal location for Inuit storytelling and presenting of Inuit culture to park visitors (non-Inuit). •Visitors (non-Inuit) to the site must be accompanied by a guide and a short training course will be offered to local Arctic Bay Inuit to become these guides. In this way, the site will have an economic benefit to local Inuit and create opportunities for visitors (non-Inuit) to access the site from Arctic Bay. •The gathering place can also provide a base for future research, such as Inuit knowledge studies, that can be conducted in the area. •Inuit Guardians doing patrols in the area of Sinaasiurvik can utilize the multi-use cabin to allow them to patrol the area more safely.

The Sinaasiurvik Gathering Place Project will have five phases  
Phase 1: Delivery of multi-use cabin to the Sinaasiurvik site. The multi-use cabin is a prefabricated building that is in multiple sections and ready for assembly. The building



Post-Closure Phase: from to

$\Lambda \subset \mathbb{N} \triangleleft \mathbb{N} \hookrightarrow \Sigma \triangleleft {}^{\epsilon_b} \mathcal{C}$

[illegible]

မေတ္တဝါ အသိပညာတို့၏ အကျိုးအမြတ်ကို အသိပညာတို့၏ အကျိုးအမြတ်ကို အသိပညာတို့၏ အကျိုးအမြတ်ကို

ᑭᐱ ᓇᓂᓴᑦ	ᐱᑏᑦ	ᑲᐅᙳᐱᓃᑎᑏᓴᑦ	ᓄᑲᓵᓚ ᐅᓴᓃᑎ ᑕᐅᑖᐅᐱᐱᐱᓴᒃᓂᑲ
ᐱᑲᐱᐱᓴᑲ	HTO Chair	Ikajutit HTO	2013-04-15
ᐱᑲᐱᐱᓴᑲ	JPMC	Sirmilik National Park Joint Park Management Committee	2015-02-17
ᐱᑲᐱᐱᓴᑲ	HTO Chair	Ikajutit HTO	2014-05-07
ᐱᑲᐱᐱᓴᑲ	JPMC	Sirmilik National Park Joint Park Management Committee	2019-10-25
ᐱᑲᐱᐱᓴᑲ	JPMC	Sirmilik National Park Joint Park Management Committee	2020-12-16
ᐱᑲᐱᐱᓴᑲ	JPMC	Sirmilik National Park Joint Park Management Committee	2021-03-10
ᐱᑲᐱᐱᓴᑲ	HTO Chair	Ikajutit HTO	2021-04-20

Δ <sup>ᐅ</sup> ΛΔ <sup>ᑦ</sup> ᐅ <sup>ᐅ</sup>	Nauttigsuqtiit/QIA	Nauttigsuqtiit/QIA	2021-05-19
Δ <sup>ᐅ</sup> ΛΔ <sup>ᑦ</sup> ᐅ <sup>ᐅ</sup>	Arctic Bay Adventures	Arctic Bay Adventures	2021-09-21
Δ <sup>ᐅ</sup> ΛΔ <sup>ᑦ</sup> ᐅ <sup>ᐅ</sup>	HTA, SJPMC, and Nauttigsuqtiit, and youth representatives	HTA, SJPMC, and Nauttigsuqtiit, and youth representatives	2021-07-23
Δ <sup>ᐅ</sup> ΛΔ <sup>ᑦ</sup> ᐅ <sup>ᐅ</sup>	JPMC	Sirmilik National Park Joint Park Management Committee	2022-01-11
Δ <sup>ᐅ</sup> ΛΔ <sup>ᑦ</sup> ᐅ <sup>ᐅ</sup>	JPMC	Sirmilik National Park Joint Park Management Committee	2022-01-26
Δ <sup>ᐅ</sup> ΛΔ <sup>ᑦ</sup> ᐅ <sup>ᐅ</sup>	JPMC	Sirmilik National Park Joint Park Management Committee	2022-02-10
Δ <sup>ᐅ</sup> ΛΔ <sup>ᑦ</sup> ᐅ <sup>ᐅ</sup>	Mayor, SAO and Financial Officer of Arctic Bay and Arctic Bay Adventures	Mayor, SAO and Financial Officer of Arctic Bay and Arctic Bay Adventures	2023-02-27
Δ <sup>ᐅ</sup> ΛΔ <sup>ᑦ</sup> ᐅ <sup>ᐅ</sup>	Kopic Attagutsiak	Community Member	2023-02-28
Δ <sup>ᐅ</sup> ΛΔ <sup>ᑦ</sup> ᐅ <sup>ᐅ</sup>	HTO Chair	Ikajutit HTO	2023-03-06

[illegible]

$a^{\dagger}r_1^a r_2^a \sigma^b$   $\Lambda_{\text{C}} n_1 n_2^c \delta D \sigma^b \gamma^c$   $n n \gamma^c \omega^c:$

## North Baffin

$\epsilon \Delta t^{\alpha} j^{c}$      $\wedge J_{\omega} e D \dot{N}$      $d^{\omega} r^{\eta b} C D P L d^{c}$

[illegible]

## Project transportation types

Transportation Type	How to Get to the Site	Length of Use
Air	Helicopter	
Water	Boat, Snowmachines on sea ice	
Land	Snowmachines	

### Project accomodation types

## Temporary Camp

## Permanent Camp

◀ ▶ ⌂ ⌕ ⌕ ⌕

[illegible]

Inuktitut Name ᐃᓕᑦᑲ ᐱᓄᑦ ᐃᑐᒪᐅᑦᐃᓖᑐᓖ ᓖᑲᓂᐃᑦᑐᑦᓴ	Quantity ᓖᑲᑦᑭᐅᑦᑳᑦ	English Name ᐃᓖᑦᑲᓖᑦᑳᑦ - >ᓖᓖᑐᑦᓴᑦ	Purpose ᐃᑐᒪᐅᑦᐃᓖᑐᓖ
Aircraft	1	Helicopter	Transport of personnel and some equipment
Electrical Tools	1-5	Drills	Assemble cabins and other infrastructure
Generator	1	Generator	Charge tools, Satellite phones, Inreach devices
Heater	1	Portable propane heater	Provide heat for personnel
Various manual tools and hardware	See attached detailed project description	See attached detailed project description	Assemble cabins and other infrastructure
Snowmachines	6	Snowmachines+qamutiit	Transport of equipment

በበፍጥረቱ ምሳሌ ለፍጥነቱ ምሳሌ ለፍጥነቱ ምሳሌ

[illegible]
$$\Delta L^{\epsilon_b} \quad \triangleleft \triangleright^{\epsilon_b} \quad C \triangleright \triangleleft \dot{L}^{\epsilon_b} \triangleright^{\epsilon_b}$$

ᐅᑦᑕ ᑕᐱᑦᑕ ᐱᐅᑦᑕᐅᑦᑕᐅᑦᑕᐅᑦᑕ	ᑦᑕᑕᑕ ᐱᐅᑦᑕᑕᑕᑕᑕᑕᑕᑕᑕᑕ	ᐱᐅᑕ ᐱᐅᑦᑕᑕᑕᑕᑕᑕᑕᑕᑕᑕ
0	Scooping from nearby water source in 4 to 20 L water jugs	Creek adjacent to Sinaasiurvik Gathering Place site, within Sirmilik National Park boundary

$\triangleleft^b C d^c$ 
$$\Delta^b C j_c n_\sigma \Delta^q \sigma^q b$$
[illegible]

See attached Project Description. Key predicted impacts are related to cultural resources, cliff nesting migratory birds and Arctic Bay community use of the area. Mitigations for cultural resource impacts are being developed as part of a Parks Canada Statement of Cultural Resource Impact Analysis following a site visit by an archaeologist, including a path to be demarcated to avoid impacts on cultural resources and designating a helicopter landing area. Standard mitigations to protect cliff nesting birds include minimum distances aircraft need to maintain from the Baillarge Bay Seabird Colony. Consultations and engagement of Inuit community members in Arctic Bay has been ongoing for this proposed project to address community interests and concerns. Mitigations for camping activities will include a spill kit to be available on-site and waste to be packed in waste bags and transported out to Arctic Bay for proper disposal.

# **Additional Information**

**SECTION A1: Project Info**

**SECTION A2: Allweather Road**

**SECTION A3: Winter Road**

**SECTION B1: Project Info**

**SECTION B2: Exploration Activity**

**SECTION B3: Geosciences**

**SECTION B4: Drilling**

**SECTION B5: Stripping**

**SECTION B6: Underground Activity**

**SECTION B7: Waste Rock**

**SECTION B8: Stockpiles**

**SECTION B9: Mine Development**

**SECTION B10: Geology**

**SECTION B11: Mine**

**SECTION B12: Mill**

**SECTION C1: Pits**

**SECTION D1: Facility**

**SECTION D2: Facility Construction**

**SECTION D3: Facility Operation**

**SECTION D4: Vessel Use**

**SECTION E1: Offshore Survey**

**SECTION E2: Nearshore Survey**

### SECTION E3: Vessel Use

## SECTION F1: Site Cleanup

## SECTION G1: Well Authorization

## SECTION G2: Onland Exploration

## SECTION G3: Offshore Exploration

## SECTION G4: Rig

## SECTION H1: Vessel Use

## SECTION H2: Disposal At Sea

## SECTION 11: Municipal Development

[illegible]

See attached documents.

[illegible]

See attached documents.

ᐱᓪᓇ ᐃᑦᑎᐅᑦ ᑦᓄᐃᑦ)ᑦᑕᑎᐅᓂᑦᓴᑦ: ᐃᓄᑕᑎᓂᑦᑭᑦᓴᑦᓴᑦ-ᐱᑦᑕᐃᑦᑕᑎᓂᑦᑭᑦᓴᑦᓴᑦ

See attached documents.

### Miscellaneous Project Information

The project is proposed to take place within a cultural site or near cultural resources. Parks Canada has prepared a Statement of Cultural Resource Impact Analysis for this proposed project because of its proximity to cultural resources.

[illegible]

See attached documents.

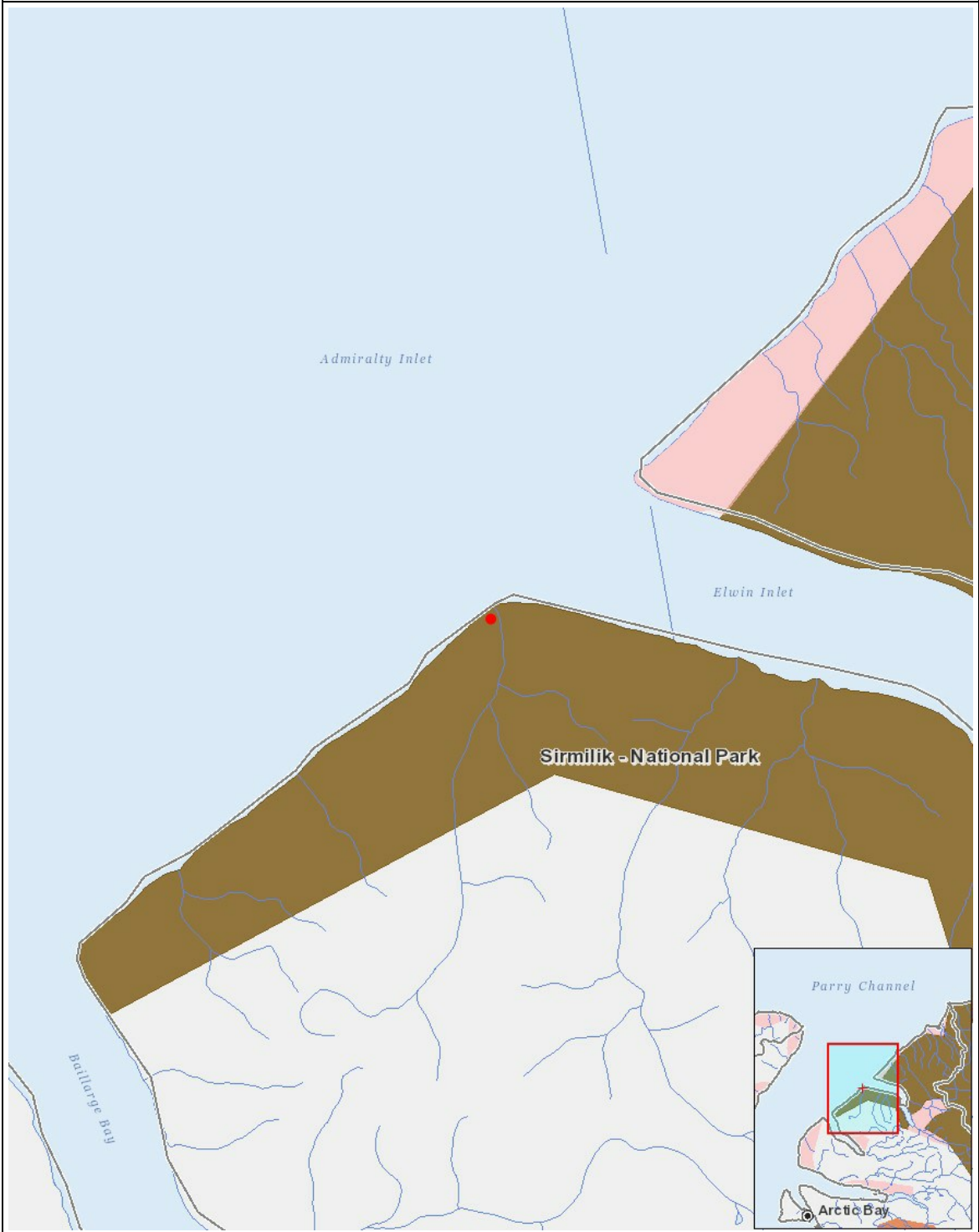
## Cumulative Effects

See attached documents.

## Impacts

$\omega \rightarrow \omega \Delta^{\frac{1}{2}} C D \sigma^{\frac{1}{2}} r^C$      $\Delta^{\frac{1}{2}} C D \sigma^{\frac{1}{2}} r^C$      $\Delta^{\frac{1}{2}} C D \sigma^{\frac{1}{2}} r^C$

[illegible]
$$(P = \langle b \rangle \dot{\cup} P \cap \langle a \rangle^c, N = \langle b \rangle \cap P \setminus \langle D \rangle \langle a \rangle^c, \langle \langle D \rangle \setminus P \rangle \cap \langle D \rangle \langle a \rangle^c, M = \langle b \rangle \cap P \setminus \langle D \rangle \langle a \rangle^c, \langle \langle D \rangle \setminus P \rangle \cap \langle D \rangle \langle a \rangle^c, U = \langle b \rangle \cup \langle a \rangle \cap P \setminus \langle D \rangle \langle a \rangle^c)$$



## List of Project Geometries

1	point	Sinaasiurvik, Sirmilik National Park
---	-------	--------------------------------------