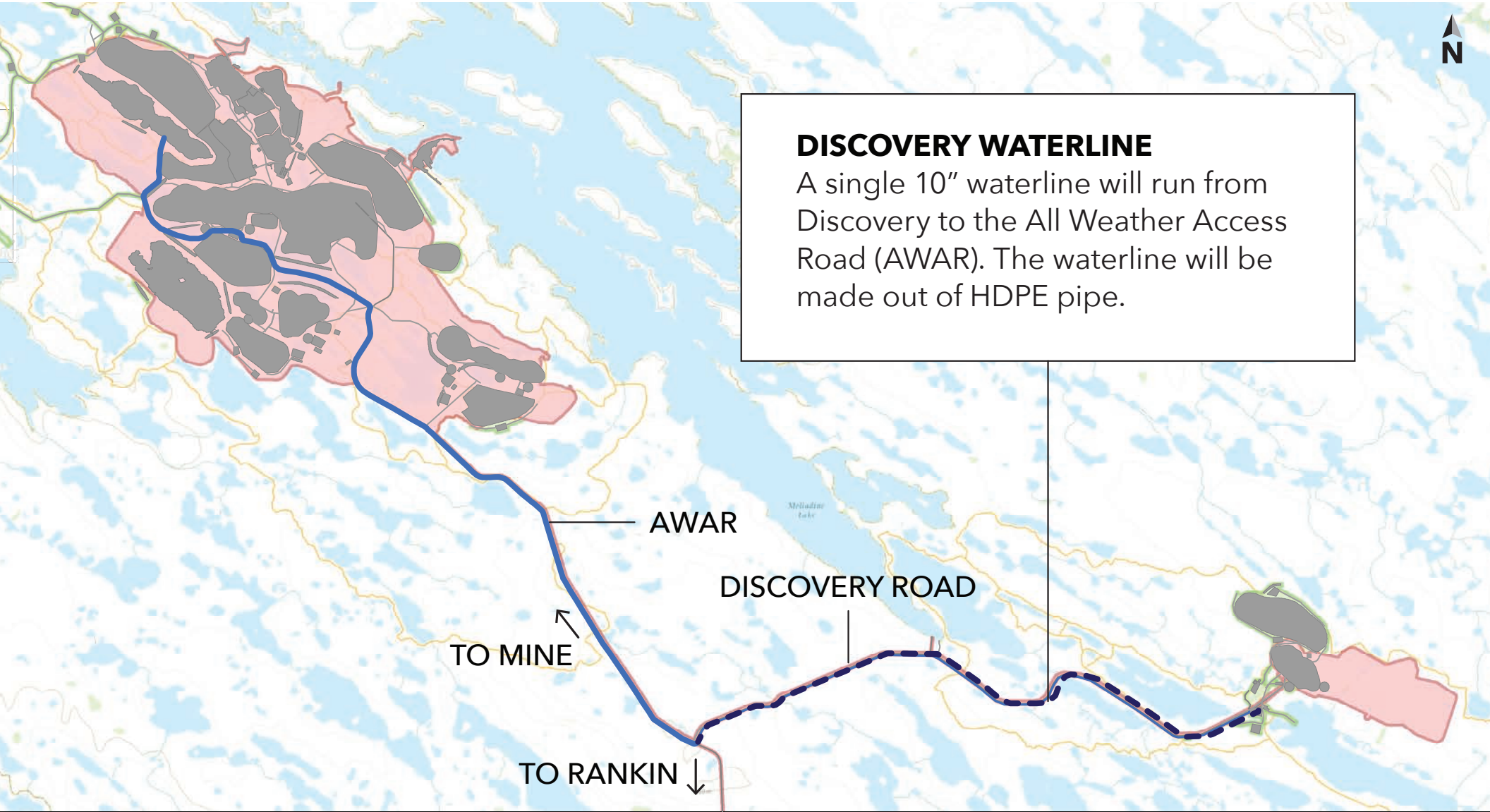


ABOUT THE DISCOVERY WATERLINE



DISCOVERY WATERLINE

A single 10" waterline will run from Discovery to the All Weather Access Road (AWAR). The waterline will be made out of HDPE pipe.

NAVIGATING CULVERTS

DISCOVERY WATERLINE
(covered by material)

CULVERT

Where culverts are needed along Discovery Road, the waterline would go over top of the culvert and be covered with material. There will be four locations between the AWAR and Meliadine Boat Launch where culverts are needed.

CROSSING THE ALL WEATHER ACCESS ROAD (AWAR)

The Discovery waterline would pass under the AWAR within a protective sleeve. To install the sleeve, a small portion of the AWAR would be excavated. Following construction, the AWAR would be restored to its current condition.

Road passage would still be maintained via single lane traffic during the short construction period needed for this task. Thresholds of the TEMMP would be maintained.

