




Huuq
Katimapkainiaqtut

Purpose of
Meeting

Ilituqhailugit maliktakhangit
nanminiqaqtunun pivalliayaangini inmi
tamayatik uvalu naunaiyainirmik angiyunik
havaakhanik (ujaraqhiurviit)

To inform guidelines for companies to
develop their materials and assessment
for large projects (such as mines)



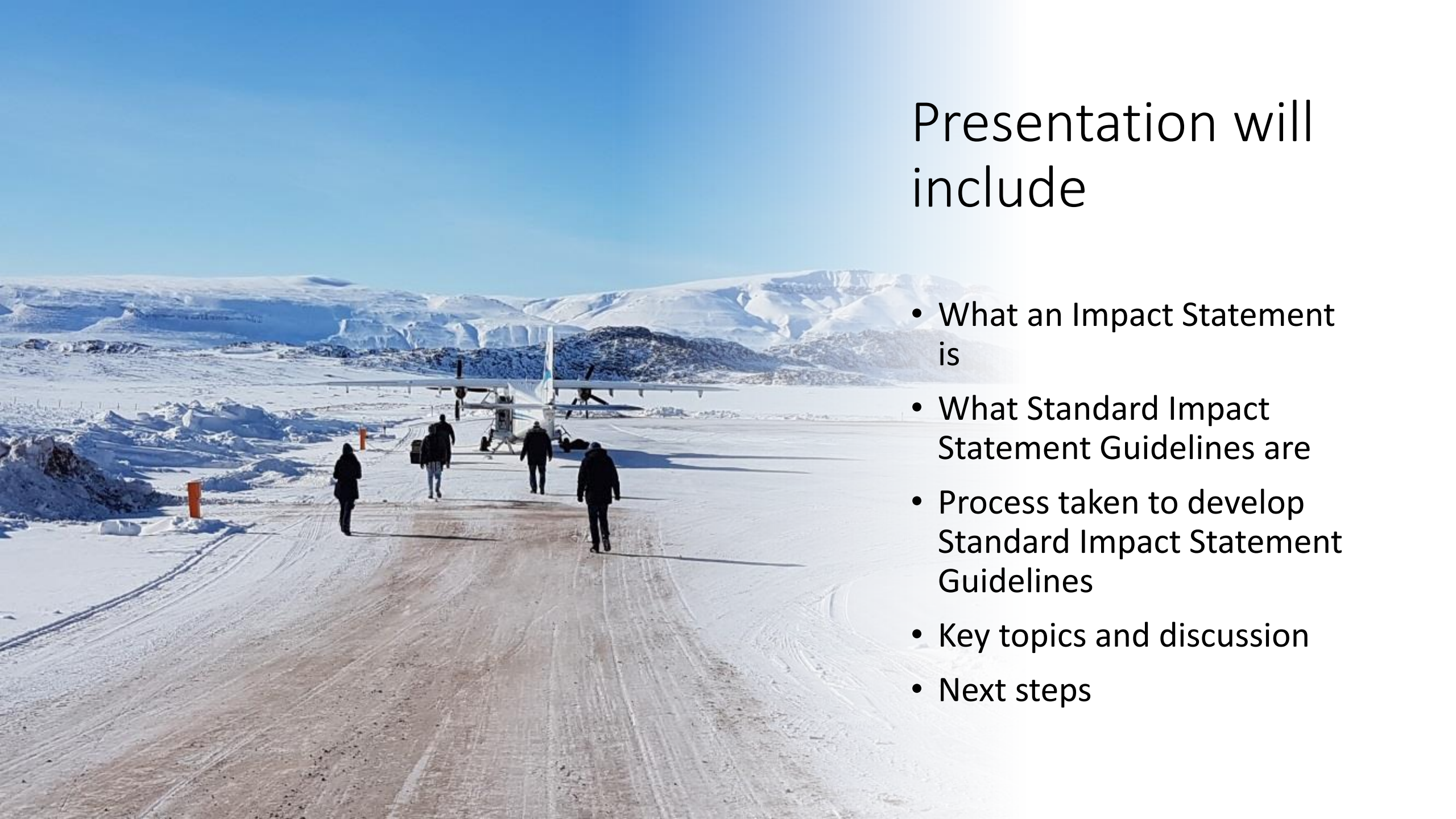
Uqarniaqtainut ilauniaqtut



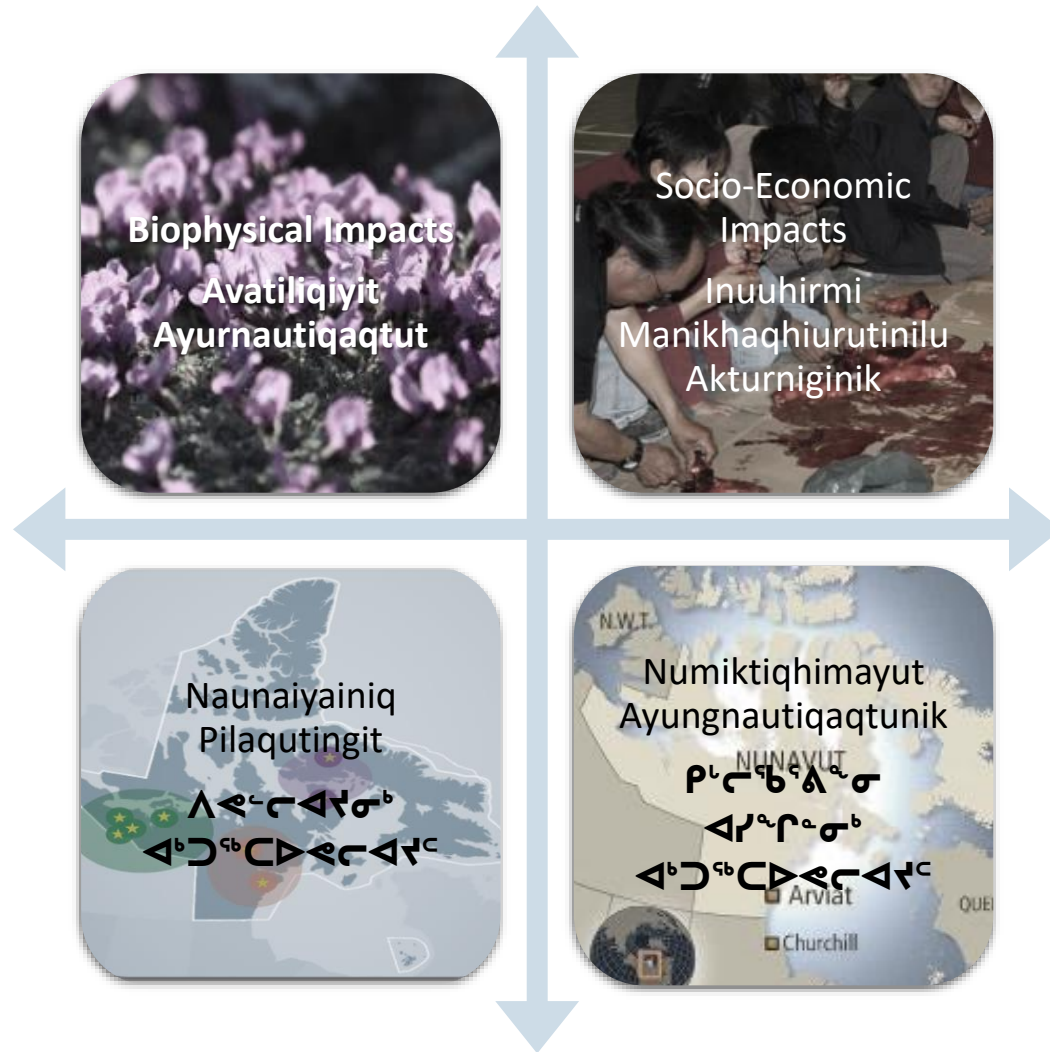
- Hunauva Ayungnautiqagtunik Uqariikhimayut imaittuq
- Hunauvat Atuqtauyut Ayurnautiqaqqaan Uqaqtauyun Maliktakhangit hapkua
- Havauhikhaa havaktauyuq havaklugit Atuqtauyut Aktuutauvaktut Uqariikhimayut Maliktakhangit
- Uqautauluaqtukhat uqaqatigiikhutiklu
- Tukliit qanuriliurutikhait

Presentation will include

- What an Impact Statement is
- What Standard Impact Statement Guidelines are
- Process taken to develop Standard Impact Statement Guidelines
- Key topics and discussion
- Next steps



Hunauva Nunavunmi Avatilirinirmut Katimayiit? What is the Nunavut Impact Review Board?



NIRB-kut Havaakhaa:
Munariyaangani uvalu
akhuugutigilugu
inuuhigattiangniq
Avatiliqiyit uvalu
Nunavunmiut
havaktaptingut

The NIRB's Mission:

To protect and promote the well being of the Environment and Nunavummiut through our work

NIRB-kut Pitquyangit

The NIRB's Mandate

Pitquyauyut

- Naunaiyainiq pigiaqaqtunik nautiinikkut **inuuhirinikkutlu maniliurutikharnik ayungnautiqagtut** pivalliajutikharnik havaakhangit
- Atuqlugit tamangnik **Pitquhikkut Qaujimajatuqangit** uvalu **nalunaqtuliqinikkut** atugakhat
- Havaklugit **pitquidjutit** uvalu **ihumaliurutit mikhaagun havaakhat** angirutait
- Havaklugit **munaridjutikkut pinahuarutit** angiqtauyunun havaakhanun
- Havaklugit **ilaliutihimayut auladjutit** pitquyauyut

Mandate

- Assess potential **biophysical and socio-economic impacts** of development projects
- Use both **Traditional Knowledge** and **scientific** methods
- Make **recommendations and determinations** about project approvals
- Establish **monitoring programs** for approved projects
- May carry out **additional functions** as recommended

Hunauva Ayungnautiqagtunik Uqariikhimayut

What is an Impact Statement



Hunauva Ayungnautiqagtunik Uqariikhimayut Projects with Impact Statements



Jericho

Hope Bay /
Doris North

Mary River

Meadowbank /
Whale Tail

Sabina

Meliadine

Baker Lake

Yellowknife

Pond Inlet

Taloyoak

Gjoa Haven

Kuuvaanuk

Northwestern
Passages

Pangnirtung

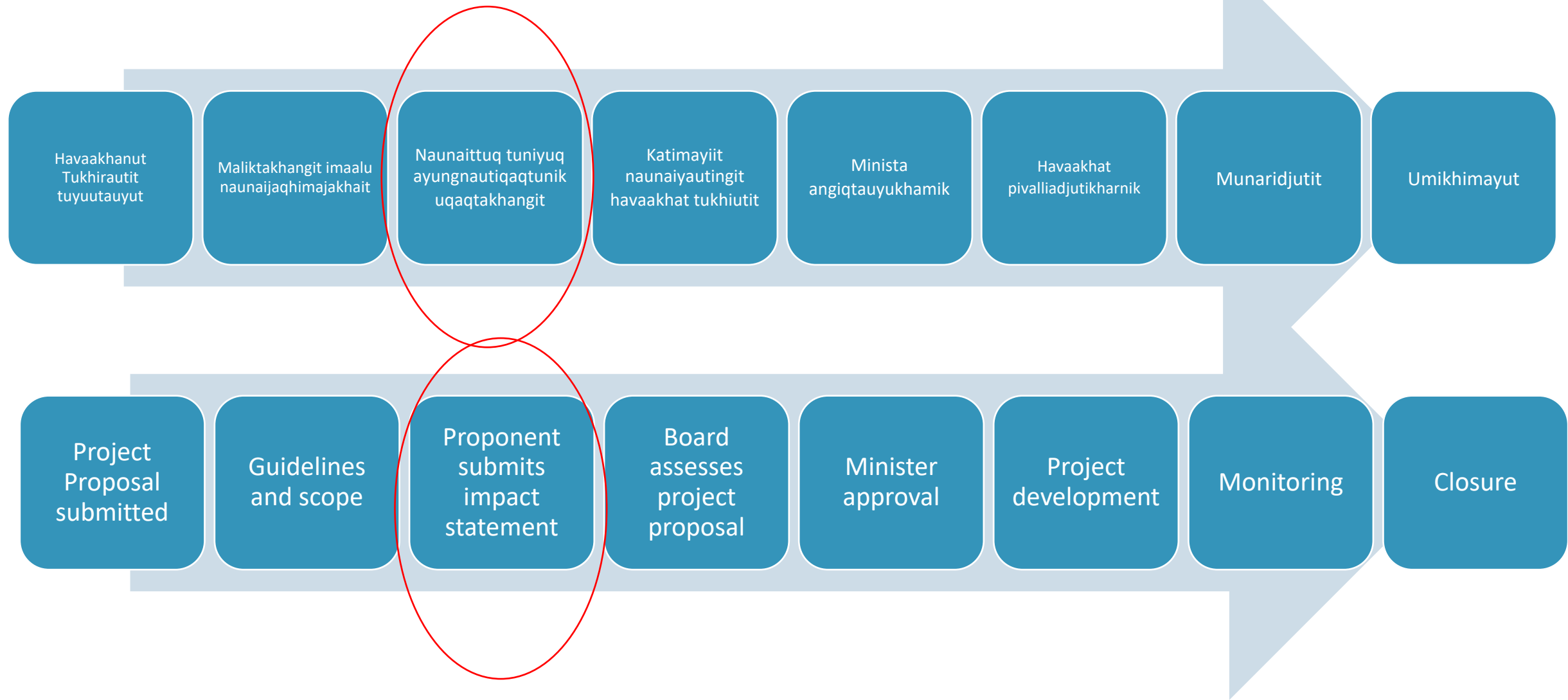
Kingait

Iqaluit

in Inlet

NIRB Ihivriurniq/Munariniq Havauhiit

NIRB Review/Monitoring Process



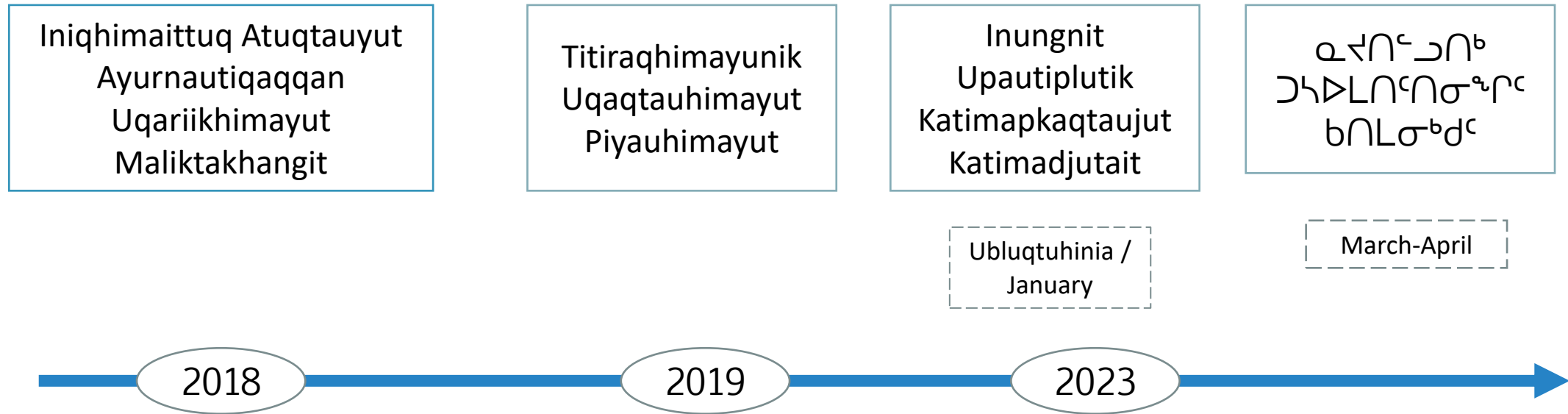
Uqaqtatit anginiqaqtut

Your feedback is important

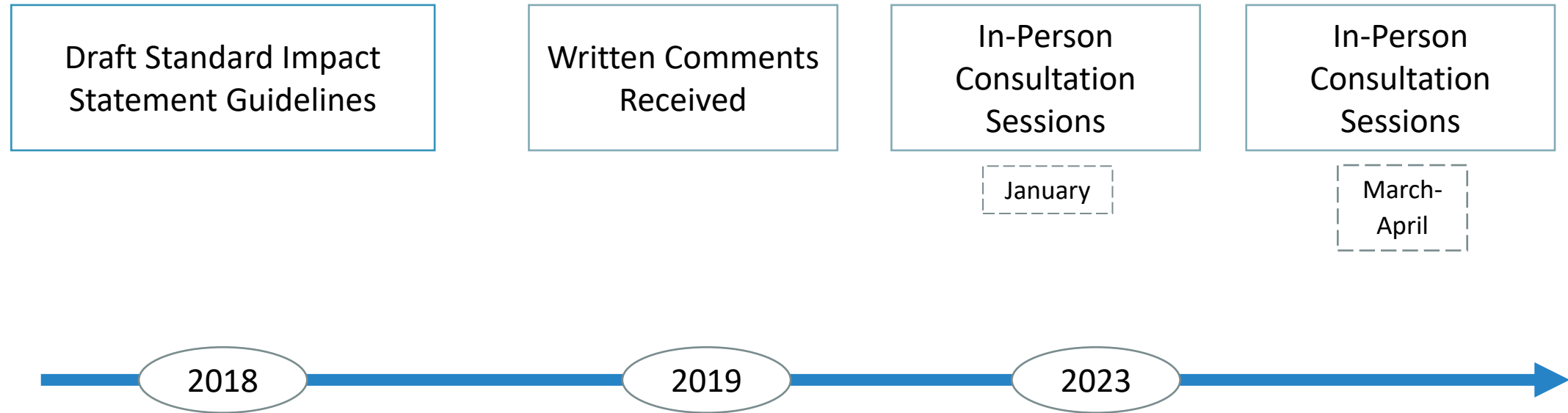
- Piqaqtutit ihuaqtunik kangiqhidjutikhanik
- Nipit anginiqaqtuq
- Ayuqhautiqarniarunaqhijutit ayurnautiqagtunik havaakhanit
- Pilarrutiqaqtutit
- You have valuable information
- Your voice is important
- You may be impacted by projects
- It is your right



Uqaudjinikkut Havauhiit



Consultation Process



Naittumik Uqauhiluat Tuniyauyut

Summary of Key Topics Provided

Apiqutit
apiqutigihimajatit

Hunanik nakuugivigit
quviagivigitluuniin?

Nalunaqtut uvaluuniin
ayuqhautit aulahimangitut?


Hunat Ilaliutihimayut
kangiqhidjutikhat uvaluuniin
maiktakhangit
piyakhaqaqqat?

Questions to ask
yourself

What do you like or
appreciate?

What uncertainties
or gaps remain?

What Additional
information or
guidance is required?

A large teal circle is positioned on the left side of the page, partially cut off by the edge. It contains the text 'Ilihaqtakhan ut uqautaujut' in white.

Ilihaqtakhan ut uqautaujut

Inuit Qaujimajatuqangit uvalu Inungnun Ilaupqatigiingniq

Naunittut Akhuurutingit

Qanuriliurutingit

Tungavia

Ayurnautiqagtunik Naunaiyainirmik

Amigaigyuumiyut Akturningit

Inuuhirmi Manikhaqhiurutinilu Ayurnautiqagtunik
Naunaiyainirmik

Hilaup Aallanguqtirninga

Ihuaqhaqhimayunik Pivalliaadjutikharnik
Nuutaanguqtiqhimayutlu



Topics

Inuit Qaujimajatuqangit and Public Engagement

Significance Determination

Methods

Baseline

Impact Assessment

Cumulative Effects

Socio-Economic Impact Assessment

Climate Change

Phased Development and Amendments

Inuit Qaujimajatuqangit uvalu Inungnun Ilaugatiingniq

- Qanuqtut Uqarumayut ilaulatoryut inungnun
- Qanuqtut Ikayuqtit atuqtakhangit Inuit Qaujimajatuqangit imaalu nunallaani qaujimajakhainnik:
 - havaklugit havaakhat
 - uvani naunaiyainirmik
- Qanuq Inuit ilauryukhat qanuqtut Inuit Qaujimajatuqangit atuqtakhangit



Inuit Qaujimajatuqangit and Public Engagement

- How Proponents must engage with the public
- How Proponents must use Inuit Qaujimajatuqangit and community knowledge:
 - in developing the project
 - in the assessment
- How Inuit must be involved in how Inuit Qaujimajatuqangit is used





Naunittut Akhuurutingit

Significance Determination



- Tamna havaakhaq aulava 'anginikhauvaa'?
- Qanq anginiqhaunia tukiqaqqa?
- Kina ihumaliuqtukhauva aulava anginiqhaunia?



- Is a project effect 'significant'?
- What does significance mean?
- Who decides whether an effect is significant?



Qanuriliurutingit

- Qanuq lkayuqtikhaq aulatitiyukhaq naunaiyainirmik
- Qanuq kangiqhidjutit katitiqtauvaktut uvalu naunaiyaqtauvakpat
- Qanuriliurutingit ilaqaqtut:
 - Kangiqhidjutit atuqtauyut naunaiyariangini ayurnautiqagtunik
 - Qanuq aalatqiingningit iniqtirutait pidjutauniaqtut hapkununga
 - Naunaittiaqhimaittunik
 - Uqauhrmik aturninga
 - Tautungnaqtun (qanuriningit, nunauyat, piksat, piksaliuqhimayut)



Methods

- How the Proponent must carry out its assessment
- How information is gathered and evaluated
- Methods include:
 - Information used to assess impacts
 - How differences in conclusions will be dealt with
 - Uncertainties
 - Language use
 - Visuals (models, maps, pictures, photos)



Tungavia

- Ilaliutigiami utuqqat qanurittaakhaanik unalu nutaaq qanurittaakhaanik
- Qanuq atuqtauyuq avatingit ihumagiyauyut aalanguqlutik havaktaunianun havaakhap kiudjutigiblogu hilaup aalanguqtirninganun
- Kituliqaak kiklivikhaqaqtunik naunairutingnik atuqtauvakhimayut





Baseline

- To include historical background and current conditions
- How the existing environment is expected to change over the life of the project in response to climate change
- Any limitations to the data used



Ayurnautiqagtunik Naunaiyainirmik



Naunairlugit ihuariyauyut naunaiqtauhimayunut

Aallanguqtirniit inungmut naunaiqtauhimayunut

Aallanguqtirniit amigaittunun ilangit naunaiqtauhimayunut

Qanuqtut anginiqaqqat aalangurningit

Katitiqhimayunik ayungnautiqagtunik

Avatingnut kiglinginit hulaqutit

Qanuriliurutikhat pittailinahuarlugit, ikiklijuumirlugit,
imaaluuniit aktuqtauniit

Impact Assessment



Identify valued components

Changes to individual components

Changes to multiple components

How significant are the changes

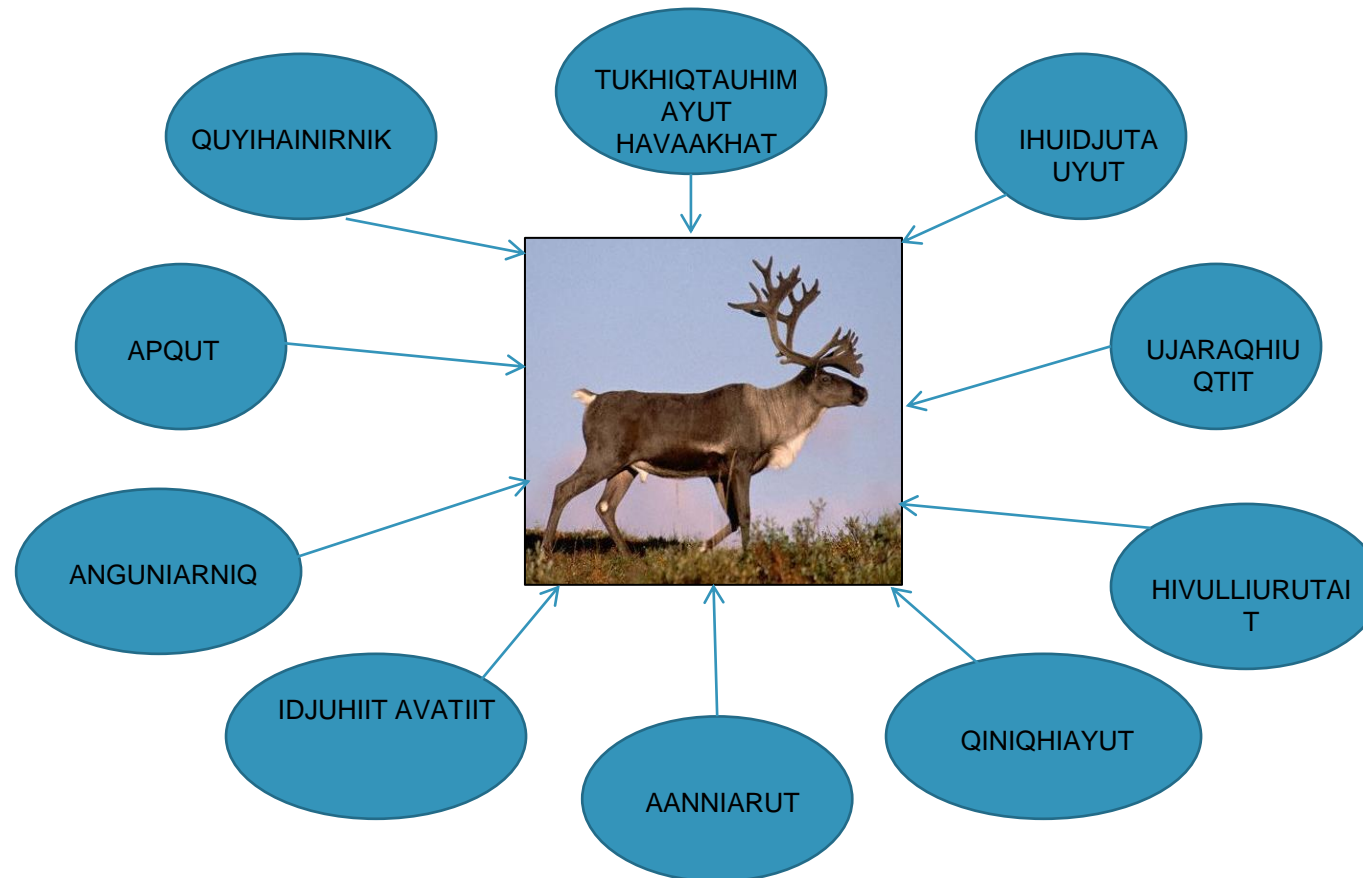
Cumulative effects

Transboundary effects

Measures to avoid, reduce, or offset impacts

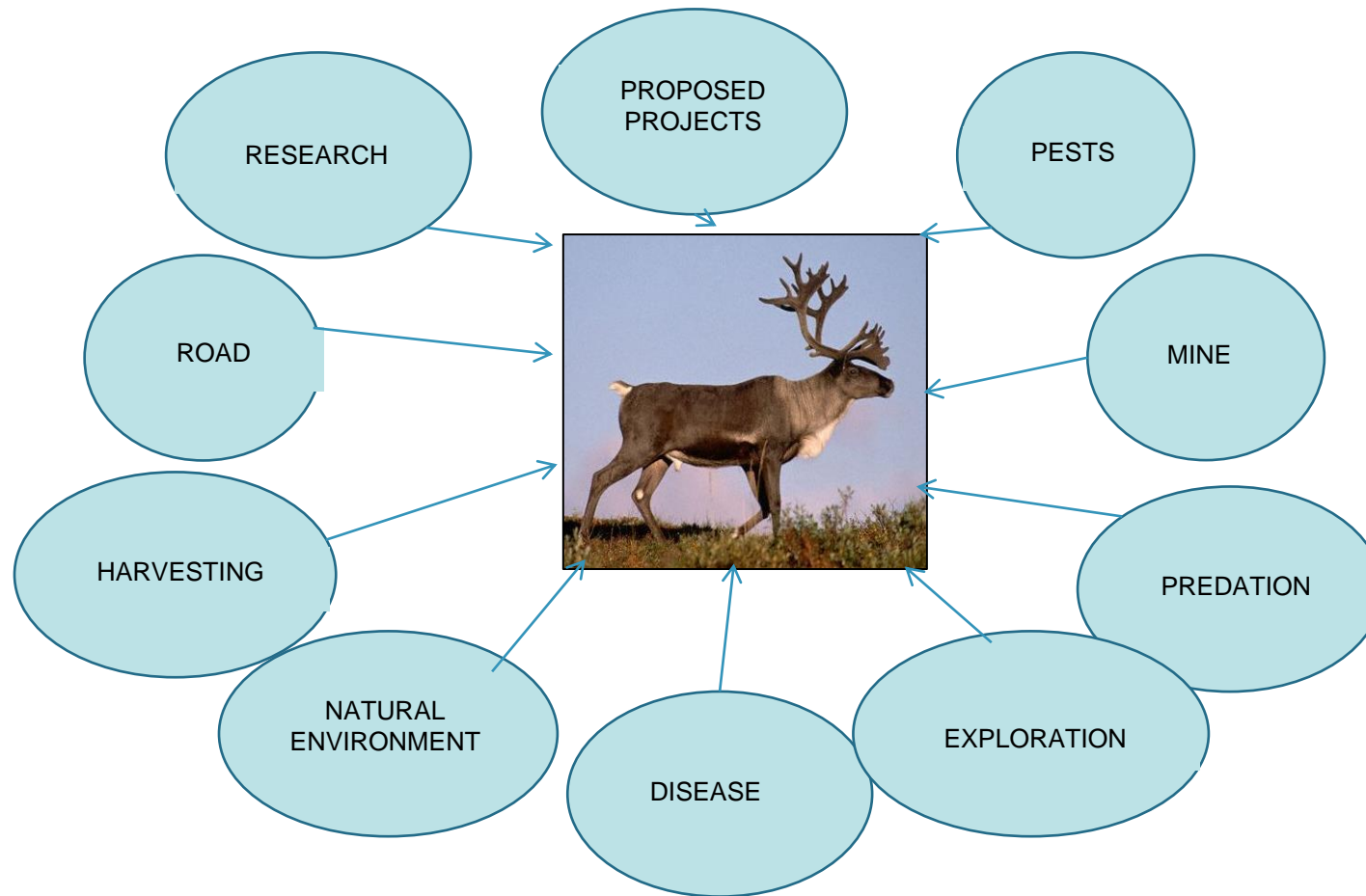
Amigaigyuumiyut Akturningit

- Amigaigyuumiyut akturningit ihumagiyauyut tapkua mikiyut hulaqutit angiyumik ayurnautiqagtunik atuliligumik aalanun mikiyunun akturningit qakugu
- Ayuittiaqhimayut uqautigiyaangani qanuq naunaiyautingit ahiagut ihumagiyauyut angikliyuumiqlugit hulaqutit



Cumulative Effects

- Cumulative effects considers that minor effects may have a larger impact when occurring with other minor effects over time
- Proponents shall address how the assessment of alternatives considered cumulative effects





Inuuhirmi Manikhaqhiurutinilu Ayurnautiqagtunik Naunaiyainirmik Socio-Economic Impact Assessment



- Naunaiyainiq uumannga inungnut-maniliurnirmut avatinga piniaqtuq aadjikutaanut akhuurninnga ayuittiarniqllu taimaa niqainnarnirmut avatinga.
- Pidjutait tapkua akhuungnatqiat Inuinangnun Nunavunmiununlu inuuhiqattiarnirmun piyauhimayut naunaitkutauyut.
- Kangiqhittiarnirmik aanniaqtailikhanik havaktaujukhat.
- An assessment of the socio-economic environment shall be done with the same level of effort and expertise as the biophysical environment.
- Factors that are most important to Inuit and Nunavummiut well-being are chosen as indicators.
- A holistic understanding of health must be taken.

Hilaup Aallanguqtirninga Climate Change

- Qanuq hilaup aallanguqtirninga aktuutauniarunaqhiyut ihuariyauyut naunaiqtauhimayunut
 - Qanuq hilaup aallanguqtirninga ihumagiyauhimayuq idjuhikhaanun uvalu upalungaiyautinun
 - Uqautigilugit naluqhaqtatik
 - Aalatqiit hilaup atugakhangit
-
- How potential climate change could affect valued components
 - How climate change has been considered in design and planning
 - Address uncertainty
 - Different climate models





Ihuaqhaqhimagayunik
Pivalliaadjutikharnik
Nuutaanguqtiqhimagayut

Phased
Development and
Amendments

Tukliit Havaktauniaqtun

Hulidjutikhaq	Niriuktauniaqtuq Ublua
Avikturviinni nunallaani uqaqatigiiktut	April 2023
NIRB-kut tuniqhaiyut Nutaanguqtiqhimayuq Ihuaqhaqhimayuq Iniqtiqhimaittut Maliktaqhaq IS Maliktaqhangit uqariamingni	Imaruqtirvia 2023 Naunaittiaqhimaittuq
NIRB tuniqhaiyut Iniqtiqhimayumik Atuqtaunginnaqtuq IS Maliktaqhangit	Aktuupa 2023 Naunaittiaqhimaittuq
Naunaiqtakhaq: Tamaita ublukhait aallanguqtauniaqtut Katimayiinginnit naunairutigilugit qanurittaakhaanik	

Next Steps

Activity	Anticipated Date
Regional community consultation	April 2023
NIRB distributes updated Revised Draft Standard IS Guidelines for comment	June 2023 Tentative
NIRB distributes Finalized Standard IS Guidelines	October 2023 Tentative
Note: All dates may be changed by the Board reflecting circumstances	

ᑭᑦᑲᑦᑲᑦᑲᑦ, Thank
you, Quana,
Qujannamiik,
Matna, Nakurmiik





Turaarvigiluta

Contact

Heather Rasmussen

Nunavunmi Avatilirinirmut Katimayiit

info@nirb.ca

1-866-233-3033 (toll free)

Heather Rasmussen

Nunavut Impact Review Board

info@nirb.ca

1-866-233-3033 (toll free)