

[illegible]

Consultation to Inform Development of Standard Impact Statement Guidelines

ወደፊት ለደብዳቤዎች ክብረት
ሐምሌ 2023

Nunavut Impact Review Board
April 2023

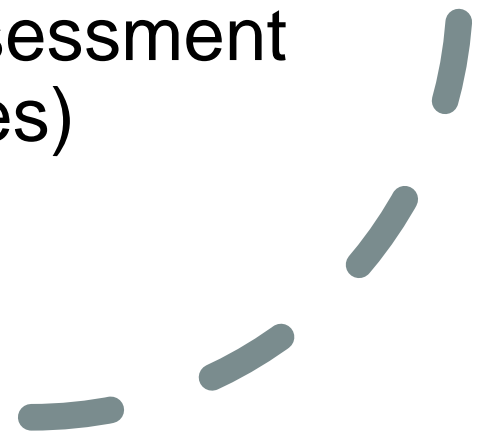
ΛζϰΠ^φΣ
βΠΛσ▷◁

Purpose of Meeting

Purpose of Meeting

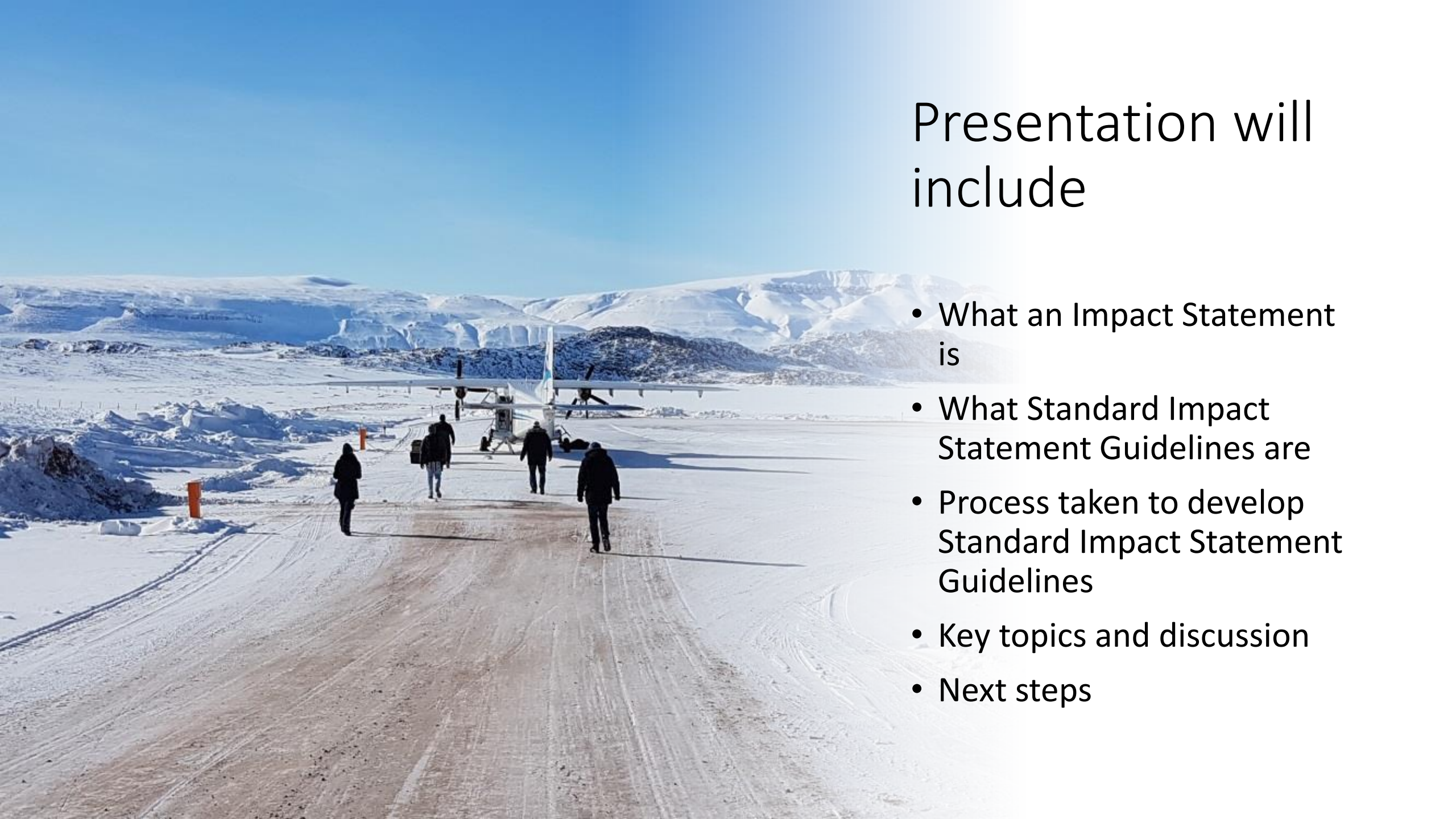
ኖቴዎታቢቦታቢ ልጋልፈር
 ልክዐልኑክልፊዎ ለፎርብቦታቢ
 በበኖሪታል ልፈረ ኖፖፖታል
 ልቦታል ካልፈረ (ኖፖ ፈኖርክል)

To inform guidelines for companies to develop their materials and assessment for large projects (such as mines)



Presentation will include

- What an Impact Statement is
- What Standard Impact Statement Guidelines are
- Process taken to develop Standard Impact Statement Guidelines
- Key topics and discussion
- Next steps



ᐱᑲᑦᓴᑦ ᓄᑲᕐᓴᑦ ᐃᑲᑲᑦᓴᑦ ᑲᑲᓴᑦᓴᑦ?
What is the Nunavut Impact Review Board?



መጋቢት ፳፻፲፱ ዓ.ም. ጥቅምት ፳፻፲፱ ዓ.ም.

ነጋሥት ልሊት
 ለገዢዎች
 ከፍተኛ ጥራትና ጥንቃቄ ለመስጠት
 ልሊት ለገዢዎች ለመስጠት
 ለገዢዎች

The NLRB's Mission:

To protect and promote the well being of the Environment and Nunavummiut through our work

ወደፊት ለደብዳቤዎች ለባለሙያዎች ለጥያቄዎች
The NIRB's Mandate

◀ ԳԵՐԵԼՏՈՒՆ

- [illegible]

Mandate

- Assess potential **biophysical and socio-economic impacts** of development projects
- Use both **Traditional Knowledge** and **scientific** methods
- Make **recommendations and determinations** about project approvals
- Establish **monitoring programs** for approved projects
- May carry out **additional functions** as recommended

የፖሊሲ ልማትና የአካባቢ ጥፋት ምርመራ

What is an Impact Statement



Projects with Impact Statements



Mary River

Jericho

Hope Bay /
Doris North

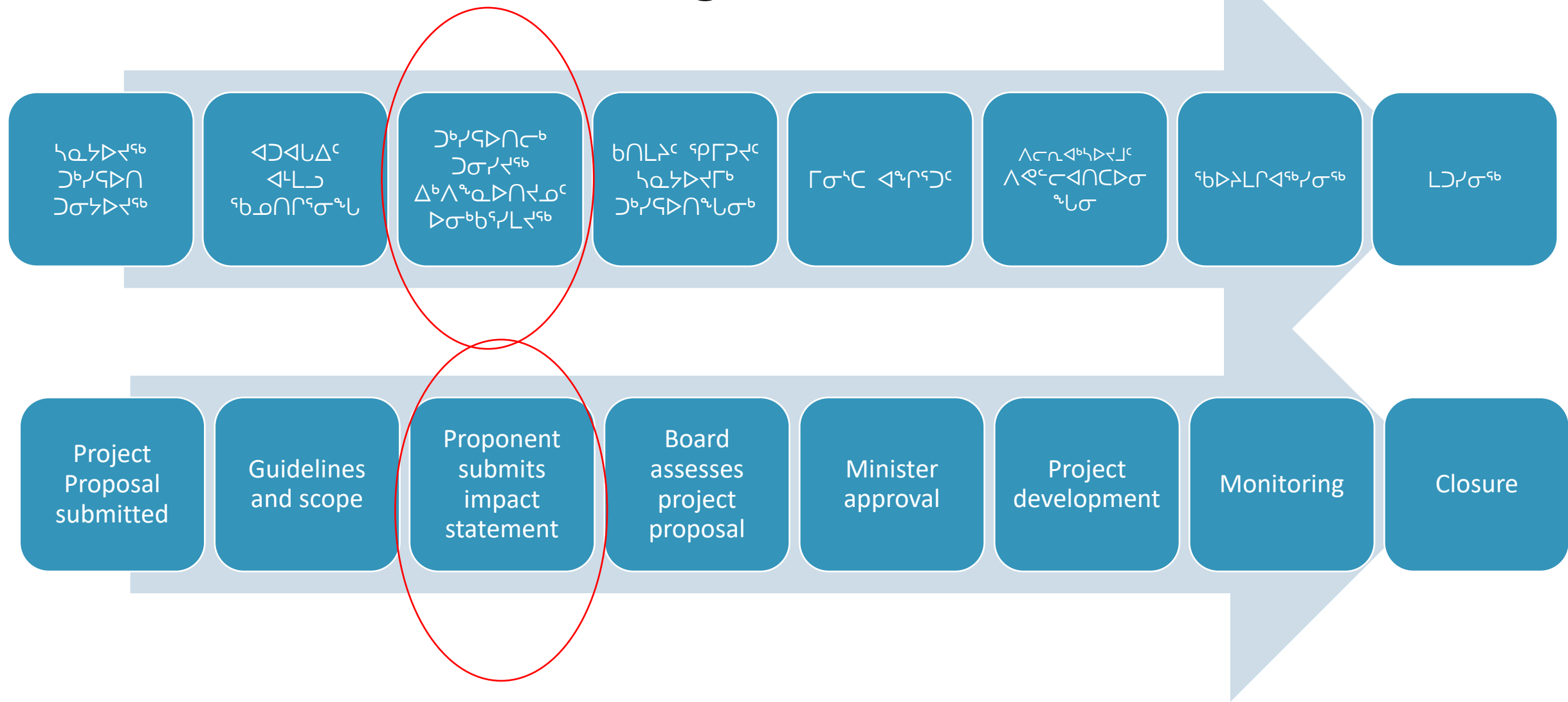
Meadowbank /
Whale Tail

Sabina

Meliadine

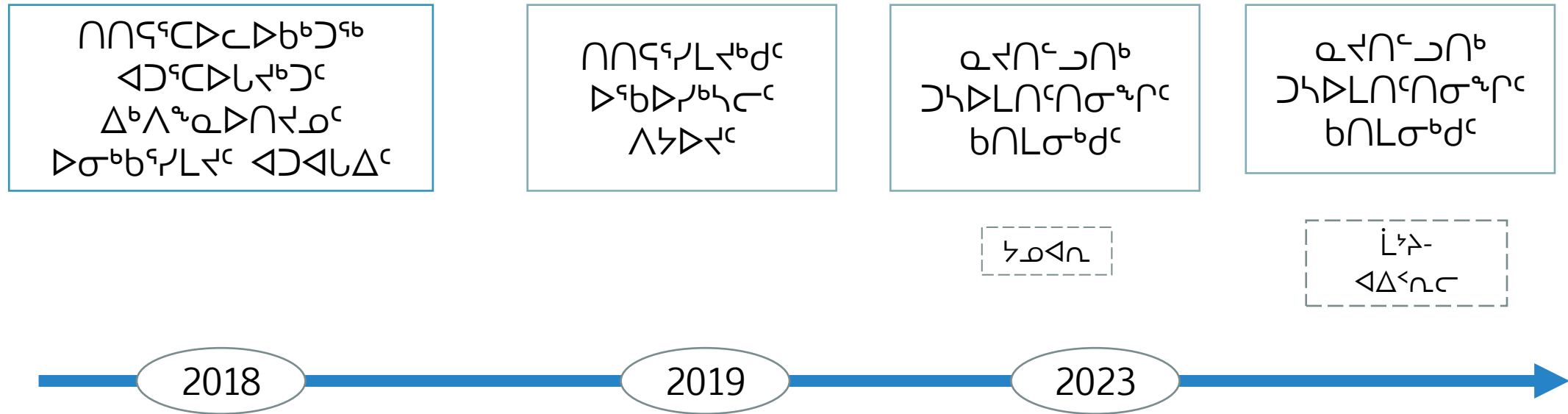
ወደፊት ለደብዳቤ ስራዎች የሚደረግ
የፕሮጀክት ልማት ስራ

NIRB Review/Monitoring Process

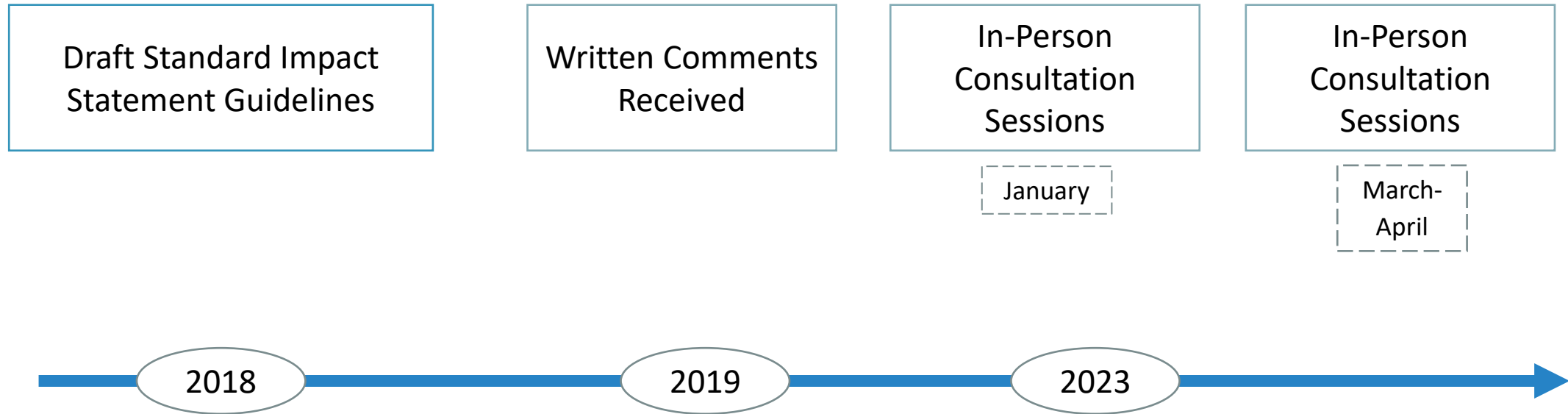


Your feedback is important

-
- A collage of three photographs documenting a community meeting. The top left image shows a man with a mustache and a plaid shirt speaking at a podium. The top right image shows a woman with glasses and a beige sweater looking towards the speaker. The bottom image shows a large group of people seated in a circle on a gymnasium floor, facing the speaker, with informational posters on the walls.

$$\triangleright \triangleright L \cap \cap \sigma^{\mathfrak{b}} \quad \triangleleft \triangleleft \subset \sigma^{\mathfrak{a}} \cup$$


Consultation Process



ዕልዕዳዊ ሥራ ለጋራ ምክር ቤቅ ጋራ

Summary of Key Topics Provided

ጋራ ምክር ቤቅ
ጋራ

የሥራ ለጋራ ምክር ቤቅ
ጋራ

የሥራ ምክር ቤቅ
ጋራ
ጋራ ምክር ቤቅ
ጋራ

የሥራ ምክር ቤቅ
ጋራ ምክር ቤቅ
ጋራ

Questions to ask
yourself

What do you like or
appreciate?

What uncertainties
or gaps remain?

What Additional
information or
guidance is required?

▷ ♪ ▷ ♫ ▷ ♩

$$\Delta_{\mathcal{M}} \Delta^c \text{ ን } \mathcal{B} \triangleright \mathcal{L} \text{ ን } \mathcal{D} \text{ ን } \mathcal{B}^{\text{ኢ}} \text{ ን } \mathcal{C}^{\text{ኢ}} \triangleleft \mathcal{L} \text{ ን } \Delta_{\mathcal{M}} \mathcal{C}^{\text{ኢ}} \wedge \mathcal{C} \text{ ን } \mathcal{B} \mathcal{C} \triangleright \sigma^{\text{ኢ}} \text{ ን } \mathcal{C}$$

$\triangleleft^C \supset^{qb} C \triangleright \neg L \sigma^q \Gamma^C \text{ e } \neg \Delta \neg \Delta \sigma^{qb}$

ΛCn³ŹĦ^c

ጋሜሌል ዲቦር

◁^b▷Δσ^aσ^a⌋^c σ^a▷⌋^c

ბიკლი⁶ პრ⁷ ႁ⁸Δσ▷⁹

[illegible]

$\rho_{\mathcal{L}} \triangleright^< \triangleleft \rho^{\mathfrak{b}}_{\mathcal{L}} <^{\mathfrak{c}} \sigma^{\mathfrak{a}}_{\mathcal{L}}$

$$\Lambda^{\mathfrak{p}} \triangleleft \mathcal{P} \subset \mathcal{D}^{\mathfrak{p}} \quad \Lambda^{\mathfrak{q}} \subset \mathcal{C} \triangleleft \mathcal{N} \subset \mathcal{O}^{\mathfrak{q}} \quad \mathcal{J} \subset \mathcal{D}^{\mathfrak{t}} \subset \mathcal{L} \subset \Delta \subset \mathcal{R} \triangleleft \mathcal{C}^{\mathfrak{b}} \subset \mathcal{D}^{\mathfrak{t}} \subset \mathcal{O}$$



Topics

Inuit Qaujimajatuqangit and Public Engagement

Significance Determination

Methods

Baseline

Impact Assessment

Cumulative Effects

Socio-Economic Impact Assessment

Climate Change

Phased Development and Amendments

ΔοΔ^ς ΞεΠάΛΛα΢Ξε^ς Δ^ςΛα Δο^ςΛ^ς Λ^ςΛ^ςΞεΠ^ςΔ^ςΞε^ς

- Ξε^ςΔ^ς Ξε^ςΛ^ςΔ^ςΛ^ς
Δ^ςΔ^ςΛ^ςΛ^ςΔ^ςΞε^ςΔ^ς Δ^ςΔ^ςΔ^ςΔ^ςΔ^ς
- Ξε^ςΔ^ς Ξε^ςΛ^ςΔ^ςΛ^ς
Δ^ςΔ^ςΛ^ςΔ^ςΞε^ςΔ^ς Δ^ςΔ^ς
ΞεΠάΛΛα΢Ξε^ς Δ^ςΛα Δ^ςΔ^ς
ΞεΠάΛ^ς:
 - Λ^ςΔ^ςΔ^ςΔ^ςΛ^ςΛ^ςΔ^ςΛ^ς Δ^ςΔ^ςΛ^ςΛ^ςΔ^ςΛ^ς
 - Ξε^ςΔ^ςΔ^ςΔ^ςΔ^ς
- Ξε^ςΔ^ς Δ^ςΔ^ς
Δ^ςΔ^ςΛ^ςΔ^ςΔ^ςΔ^ςΔ^ς Δ^ςΔ^ςΔ^ςΔ^ςΔ^ς
Δ^ςΔ^ς ΞεΠάΛΛα΢Ξε^ς



Inuit Qaujimajatuqangit and Public Engagement

- How Proponents must engage with the public
- How Proponents must use Inuit Qaujimajatuqangit and community knowledge:
 - in developing the project
 - in the assessment
- How Inuit must be involved in how Inuit Qaujimajatuqangit is used





◁▷⁹ᵇC▷⁹Lσ⁹Γᶜ
Q⌋QΔ⁹Δσ⁹ᵇ

Significance Determination

- ካዲንጋረፍ ልጋልሚስ “ልዩረኔረጌ?”
- ናጌጋጌ ጋዖኔፍፋ ልዩረኔረጌ?
- ዖዲ ልዩዖኔፍፋፍፍፍፍ ልጋልረፍ ልዩረኔረጋሚስሙ?



- Is a project effect ‘significant’?
- What does significance mean?
- Who decides whether an effect is significant?



ΛCn⁺↔n⁺

- [illegible]



Methods

- How the Proponent must carry out its assessment
- How information is gathered and evaluated
- Methods include:
 - Information used to assess impacts
 - How differences in conclusions will be dealt with
 - Uncertainties
 - Language use
 - Visuals (models, maps, pictures, photos)



ᐅᓄᓂᐱᓐᓂᐅ

- ᐱᓐᓂᐱᐅᐱᓐᓂᐅ ᓂᓐᓂᐱᓐᓂᐅ
ᓐᓂᐱᐅᐱᓐᓂᐅᐱᓐᓂᐅ ᐱᓐᓂᐅ
ᐱᐅᐱᓐᓂᐅᐱᓐᓂᐅ
- ᓐᓂᐱᓐ ᐱᓐᓂ ᐱᓐᓂᐱᓐ ᐱᓐᓂᐱᓐᓂᐅᐱᓐᓂᐅ
ᐱᓐᓂᐱᓐᓂᐅᐱᓐᓂᐅ ᐱᓐᓂᐱᓐᓂᐅᐱᓐᓂᐅ
ᐱᓐᓂᐱᓐᓂᐅᐱᓐᓂᐅ ᐱᓐᓂᐱᓐᓂᐅᐱᓐᓂᐅ
- ᓂᓐᓂᐱᓐᓂᐅᐱᓐᓂᐅ ᐱᓐᓂᐱᓐᓂᐅᐱᓐᓂᐅ





Baseline

- To include historical background and current conditions
- How the existing environment is expected to change over the life of the project in response to climate change
- Any limitations to the data used



◁^b▷Δσ^aб^aσ^a┐^c ^aб▷┐^aΔ^aσ^a┐^c



உயரதர உயர்வு வளர்ச்சி வளர்ச்சி வளர்ச்சி

ᐱᕈᓕᓕᓴᓴᓕ ᐱᓴᓂ ᐃᓴᓕᓴᕈᓕ

[illegible]

ᄒᄒᄒ ᄒᄒᄒᄒᄒᄒᄒᄒ ᄒᄒᄒᄒᄒᄒᄒᄒ

ბიბლია

መፈረሻ ሥርዓቶች ከመፈረጥና ልዩነታት

[illegible]

Impact Assessment



Identify valued components

Changes to individual components

Changes to multiple components

How significant are the changes

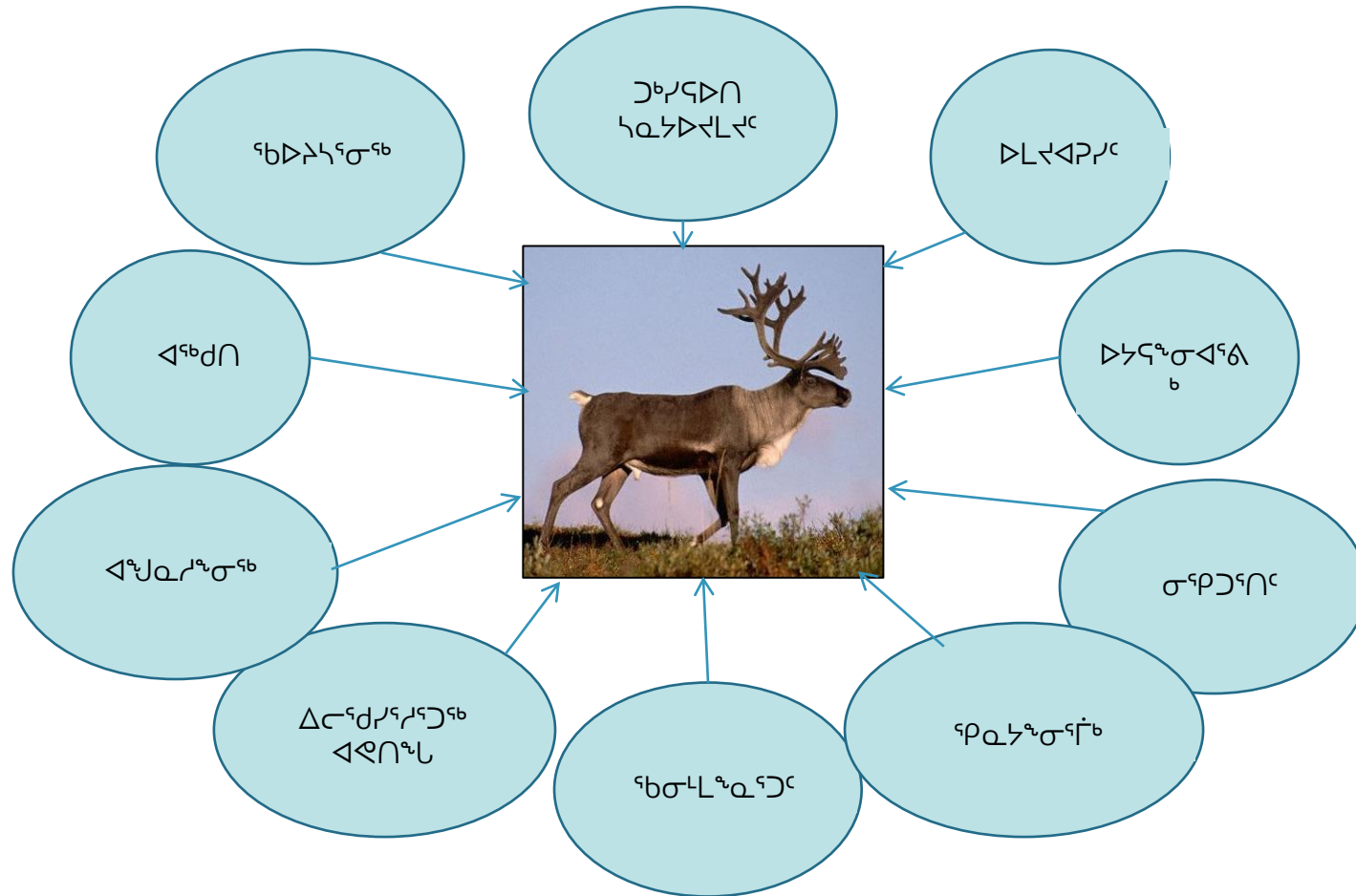
Cumulative effects

Transboundary effects

Measures to avoid, reduce, or offset impacts

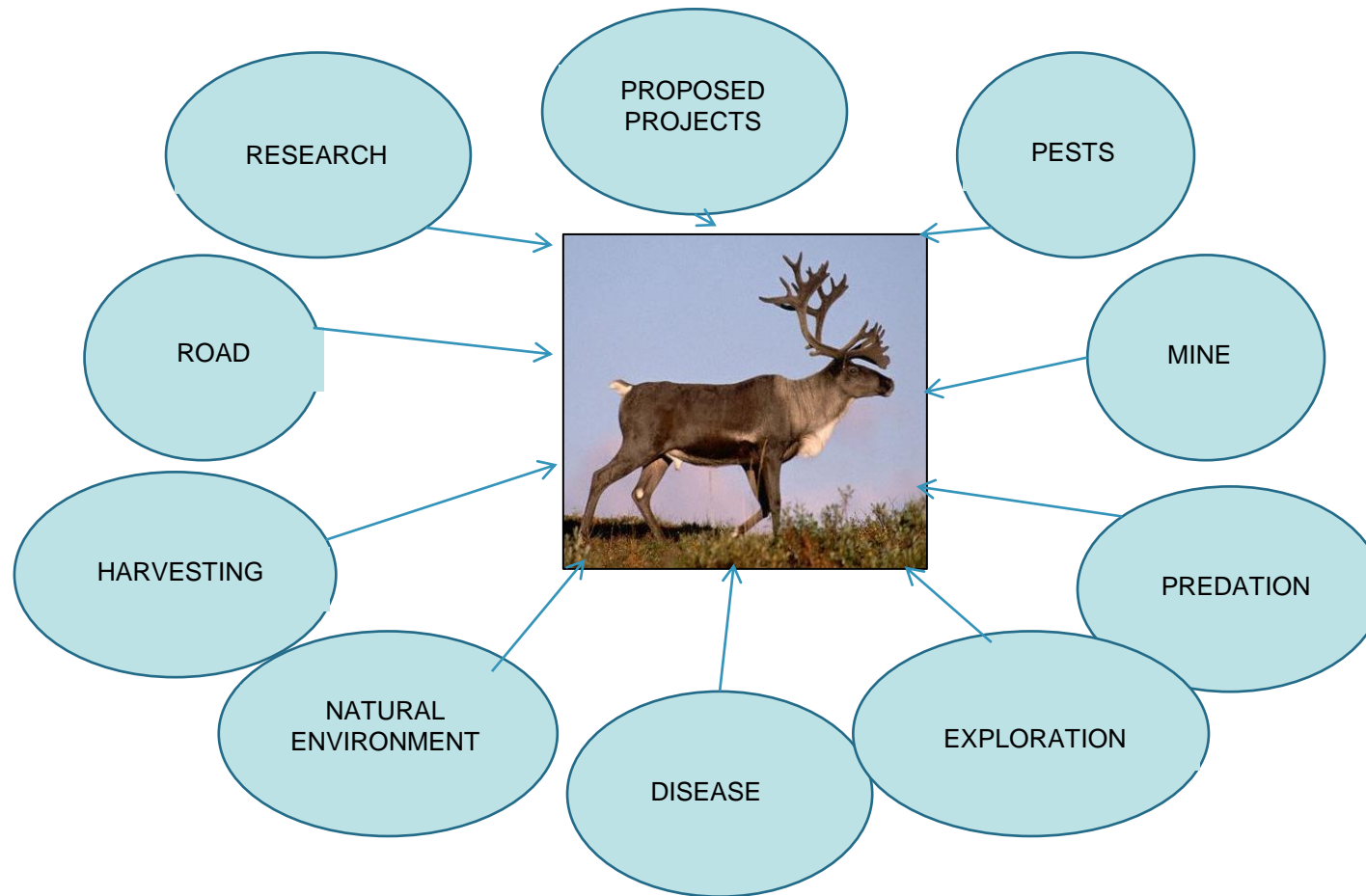
$b\partial c \dot{L}^{\epsilon_b} \curvearrowright r^c \quad \triangleleft^b \supset \Delta \sigma \triangleright \prec^c$

- [illegible]



Cumulative Effects

- Cumulative effects considers that minor effects may have a larger impact when occurring with other minor effects over time
- Proponents shall address how the assessment of alternatives considered cumulative effects



[illegible]

ፖሊሲ ለጥቅምተኛው የክልል አስተዳደር

Climate Change

- የክልል አስተዳደር የክልል አስተዳደር ፖሊሲ ለጥቅምተኛው የክልል አስተዳደር ልማት
- የክልል ፖሊሲ ለጥቅምተኛው የክልል አስተዳደር ልማት
- የክልል አስተዳደር ፖሊሲ ለጥቅምተኛው የክልል አስተዳደር ልማት
- ለጥቅምተኛው የክልል አስተዳደር ፖሊሲ ለጥቅምተኛው የክልል አስተዳደር ልማት
- How potential climate change could affect valued components
- How climate change has been considered in design and planning
- Address uncertainty
- Different climate models



ΛΓΔΡCDΔ^c
Λ^ρcΔΓ^cΠσ^ρ
J^c Δ⁴LJ
ΔCΓΔ^{ρb}CDΔ^cσ

Phased
Development
and
Amendments

ገጽ ፩ ልማት

የግብርናው ስራ	ልማት ዓመት
የግብርናው ስራ ለግብርናው ስራ	ልማት 2023
ወደፊት የግብርናው ስራ (NIRB) ጋራ የግብርናው ስራ ወደፊት የግብርናው ስራ የግብርናው ስራ የግብርናው ስራ ለግብርናው ስራ የግብርናው ስራ የግብርናው ስራ (IS) ለግብርናው ስራ የግብርናው ስራ የግብርናው ስራ	ግብር 2023 የግብርናው ስራ
ወደፊት የግብርናው ስራ (NIRB) ጋራ የግብርናው ስራ ለግብርናው ስራ ለግብርናው ስራ የግብርናው ስራ የግብርናው ስራ (IS) ለግብርናው ስራ	ግብር 2023 የግብርናው ስራ
የግብርናው ስራ: ለግብርናው ስራ ለግብርናው ስራ የግብርናው ስራ የግብርናው ስራ	

Next Steps

Activity	Anticipated Date
Regional community consultation	April 2023
NIRB distributes updated Revised Draft Standard IS Guidelines for comment	June 2023 Tentative
NIRB distributes Finalized Standard IS Guidelines	October 2023 Tentative
Note: All dates may be changed by the Board reflecting circumstances	

ᑭᑦᑯᑦᑲᑦᑲᑦ, Thank
you, Quana,
Qujannamiik,
Matna, Nakurmiik



100

Contact

1-866-233-3033 (toll free)