



NUNAVUT IMPACT REVIEW BOARD

ᓄᓇᓂᓄᓐ ᐃᓄᓂᓂᓐᓂᓐᓂᓐ ᐅᓂᓂᓐᓂᓐ

Scoping and Impact Statement Guidelines for the NIRB's Review of the Chidliak Diamond Mine Project

ᓂᓂᓂᓂᓂᓐ ᐃᓄᓂᓂᓐᓂᓐᓂᓐ ᐅᓂᓂᓐᓂᓐ ᐃᓄᓂᓂᓐᓂᓐᓂᓐ
ᐅᓂᓂᓐᓂᓐ ᐃᓄᓂᓂᓐᓂᓐᓂᓐ ᐅᓂᓂᓐᓂᓐ (NIRB) ᓂᓂᓂᓐ
ᐅᓂᓂᓐᓂᓐ ᐃᓄᓂᓂᓐᓂᓐᓂᓐ

June 2023

ᓂᓂᓂᓂᓐ 2023

ብሊፍ ሙጽቲ ልዩብርሲታዊ ክብራዊ
ጸሐፊ ሙርሳዊ?

- **Present:** Chidliak Diamond Mine Project
 - **Explain:** NIRB's Review of the Project
 - **Ask:** How do you feel about the Project
 - **Listen:** your questions, comments, and concerns
- ᐅᖃᐅᓯᖃᕋᑦ ᓱᒪᔭ ᑕᐏᓚ ᐅኘᕋᓂᐊᕋᐏ
ᐱᑕᓚᐊᖃᙳᓱᑕ
- ᑐᓶᓱᓱᐊᕋᑎᑕᑎᑦᑆᑆ: ᓄᓇ៽ᓴᓰ ᐊᑲᑎᑕᓚᓁᐊᑕ
ᑎᑎᓚᓁᙳᓱᑕ ᐱᑕᓚᐊᖃᙳᑕ
- ᐊᐱᓚᑦᑆ: ᕋᑎᓄᕋᑎ ᐃᕋᐱᓱኘᕋᑎᐱᑕ
ᐱᑕᓚᐊᖃᙳᓚᐅᑉᓄᑕ?
- ᑐᙵᑦᑆ: ᐊᐱᕋᑎᑎᑕ, ᐅᖃᐅᓯᑕ, ᐊᓴᓚ ᐃᓱᓚᑐᑎᓱᐅᑕ



- To protect and promote the well being of the Environment and Nunavummiut through the Impact Assessment process

ወደፊት ለደቡብ ምሥራቅ ከባላግራ ለረብረብኝ

- ኢንተርኔት ላይ የሚገኝ የጥናት ሪፖርት ለመግቢያ ማስፈለግ



Who is the NIRB?

- 8 board members & 1 Chairperson
 - Nominated by government and Inuit Organizations

ᐅᑦᑦ ᓄᓇᓂᓴᑦ ᐱᓚᐅᑦᑕᑦᑕᑦ
ᑲᐅᑦᑕᑦᑕᑦ?


- 8 ᑲᐅᑦᑕᑦ ᐱᑦᑕ
1 ᐱᑦᑕᑦᑕᑦᑕᑦ
- ᓂᓂᐱᑦᑕᑦᑕᑦ
ᑕᓚᑦᑕᑦᑕᑦ ᐱᑦᑕ
ᐱᓄᐱᑦ
ᑲᑦᑕᑦᑕᑦᑕᑦᑕᑦᑕᑦᑕᑦ



FULL REVIEW ITEM	PROPOSANT	MRP	PAWES	COMMUNITY
Phase 1: Screening & Guidelines Creation				
1. Project Screening				
• meet community/scoping sessions	✓	✓	✓	✓ public meeting
• Develop EIS Guidelines	✓	✓	✓	
• EIS Guidelines Development Workshop (optional)	✓	✓	✓	• technical meeting
2. Issue EIS Outlines		✓		
Phase 2: Draft Environmental Impact Statement (EIS)				
3. Prepare and Submit Draft EIS	✓			
4. Review Draft EIS for Conformity with Guidelines		✓		
5. Technical review of Draft EIS			✓	
• Preparation of Information Requests	✓	✓	✓	
• Prepare and submit response to info Requests	✓	✓	✓	
• Prepare and submit technical review comments	✓	✓	✓	• information session
• hold community information sessions	✓	✓	✓	• technical meeting
6. Technical meeting		✓	✓	• public meeting
7. Pre-Hearing Conference		✓	✓	
Phase 3: Final Environmental Impact Statement (EIS)				
8. Submission of Final EIS	✓			
9. Comprehensive review of Final EIS			✓	
10. Technical review of Final EIS			✓	
• hold community info session			✓	
11. Final Hearing			✓	
12. Issue final report to MRD			✓	

Technical meetings are open to the public.

Application for project



Identify potential Impact

உடனடி
உடனடி



Recommend if project should proceed or not

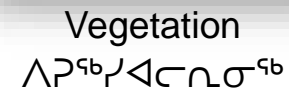
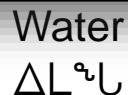
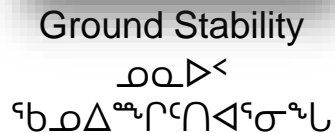
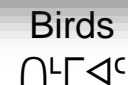
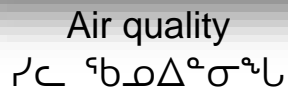


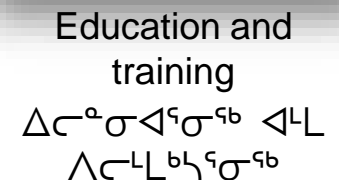
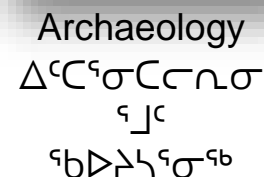
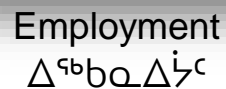
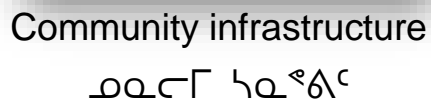
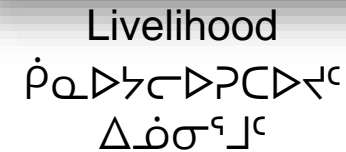
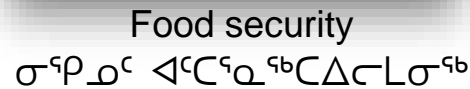
Three people wearing outdoor jackets and a cap are gathered around a small object on a boat deck, possibly a piece of coral or a small animal, examining it closely. The background shows the ocean.



NIRB
NUNAVUMI AVATILIKIVIN KATIMAYIN

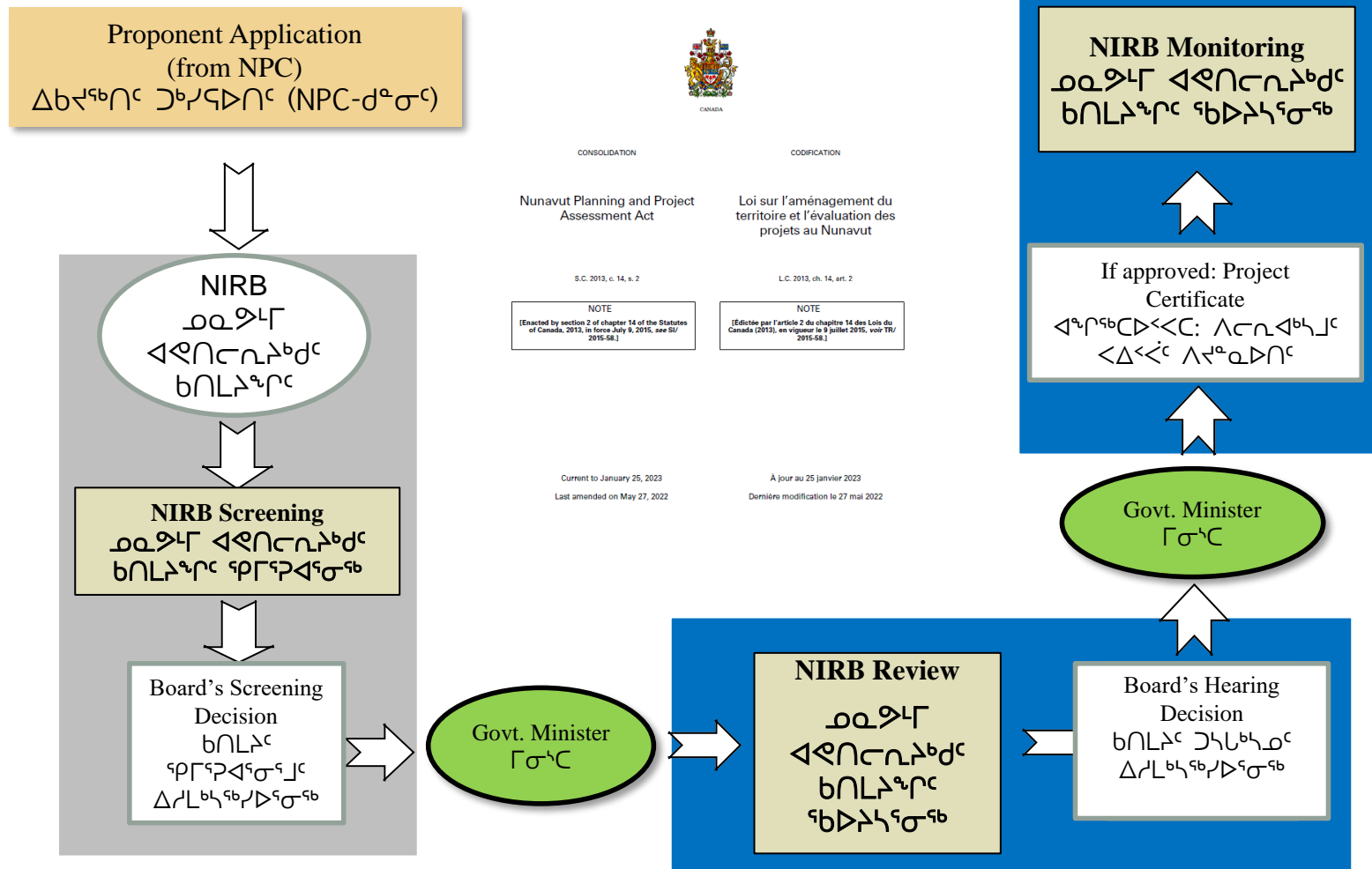
ᐃᓚᓴᕈᖅ ᐱᓄᓂᓴᕈᖅ





The NIRB's Impact Assessment Process

መደብር ልዩበርሲታዊ ክብረት ልብጥር-ጥርጥር ልብጥር-ጥርጥር
ክብረት ልብጥር-ጥርጥር ልብጥር-ጥርጥር



The NIRB does a Review When...

መደቃታል ልዩበርሲታዊ ክብረትና ፍጥነት
 ልረጅርፍ...

- Significant impact on the environment, wildlife and Inuit harvesting
- Socio-economic effects on northerners
- Significant public concern
- Involves new technology – unknown effects
- ለሲቪል ልማት
 ልማት ምክር ቤት ልማት
 ልማት, ልማት, ልማት
 ልማት ልማት ልማት
- ልማት ልማት ልማት
 ልማት ልማት ልማት
- ልማት ልማት ልማት
 ልማት ልማት ልማት
- ልማት ልማት ልማት
 ልማት ልማት ልማት

How can you learn more about NIRB's assessments?

• Public Registry

- Search for project or documents
- Register to receive notifications

• Calendar

- Active projects and deadlines

SEARCH the PUBLIC REGISTRY

Are you a registered user?
We want your feedback. As a registered user you can share your ideas and opinions with us. It's quick and easy. Just click the button below.

[Register an Account](#) [Contact NIRB](#)

Keyword Search
☐ Search Projects ☐ Search Documents

Advanced Search

Project Location

☐ Transboundary ☐ Kirkcubbin
☐ Kivalliq ☐ Harts Bay
☐ South Bay

Project Type

☐ Access ☐ Access Road
☐ All-Weather Road / Access Trail ☐ Camp
☐ Coastal Infrastructure ☐ Defence
☐ Fuel ☐ Ice Drilling
☐ Infrastructure ☐ Lease
☐ Marine Based Activities ☐ Mine Development
☐ Mineral Exploration ☐ Municipal and Industrial Development
☐ National Park ☐ Oil and Natural Gas Development
☐ Oil and Natural Gas Exploration ☐ Other
☐ Pits and Quarries ☐ Power Plant
☐ Remediation ☐ Scientific Research
☐ Site Cleanup/Remediation ☐ Space
☐ Tourism ☐ Water
☐ Winter Road / Winter Trail


Assessment Status

☐ Active Screening ☐ Active Review
☐ Active Monitoring ☐ Completed Screening
☐ Completed Review ☐ Completed Monitoring
☐ Exempt from Screening ☐ Inactive
☐ Cancelled Screening ☐ Active S.E.A.
☐ Completed S.E.A.

☒ Select All
☐ Deselect All

Map Search

[Go Search Map](#)



[Reset](#) [Search](#)

ክፍል ልሳኑ ምዕራፍ ለፍልጠና ፋይናንስያል ክፍል ክፍል ለፍልጠና

- የፋይናንስያል ክፍል ለፍልጠና
የፋይናንስያል/ፋይናንስያል
ፋይናንስያል ክፍል ለፍልጠና
- የፋይናንስያል ክፍል ለፍልጠና
የፋይናንስያል ክፍል ለፍልጠና
- የፋይናንስያል ክፍል ለፍልጠና
የፋይናንስያል ክፍል ለፍልጠና
- ፋይናንስያል ክፍል ለፍልጠና
የፋይናንስያል ክፍል ለፍልጠና
- ፋይናንስያል ክፍል ለፍልጠና
የፋይናንስያል ክፍል ለፍልጠና
- ፋይናንስያል ክፍል ለፍልጠና
የፋይናንስያል ክፍል ለፍልጠና

NIRB
NUNAVUT IMPACT REVIEW BOARD

[About NIRB](#) [Reports](#) [Public](#) [Process](#) [Resources](#) [Contact](#) [Public Registry](#)

Public Registry

EVENTS CALENDAR

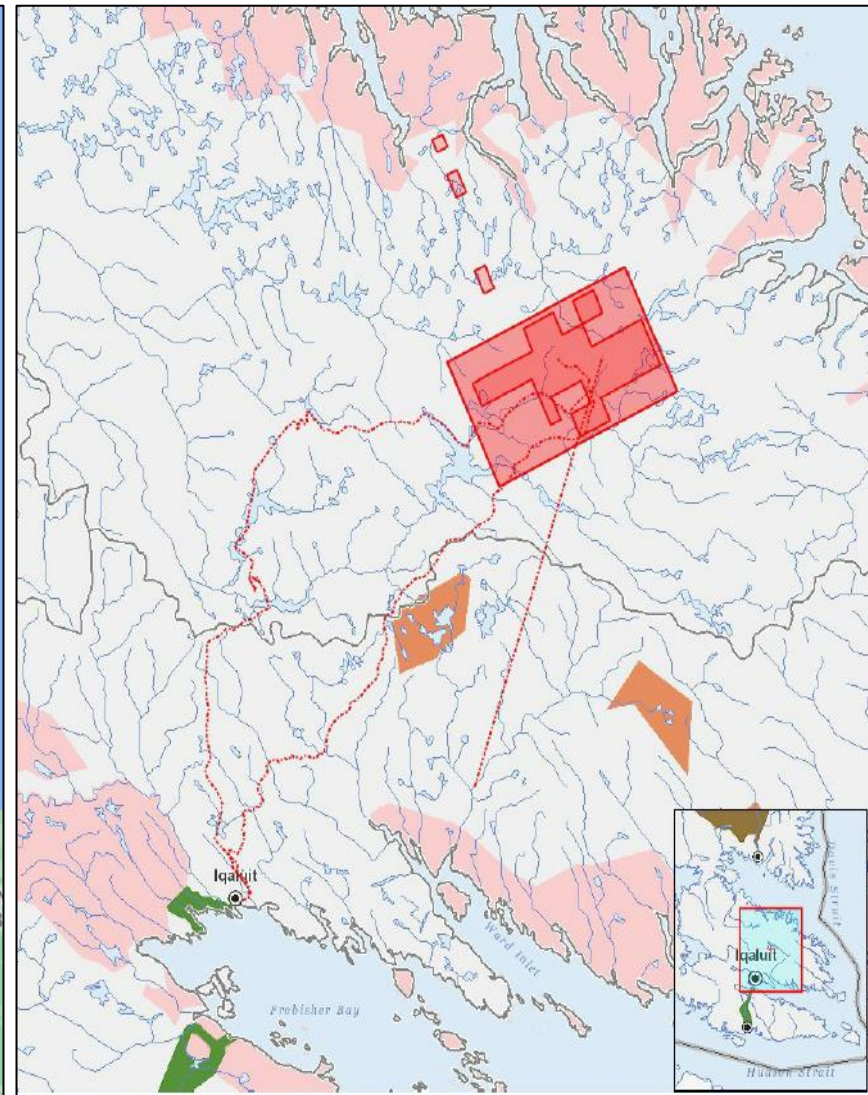
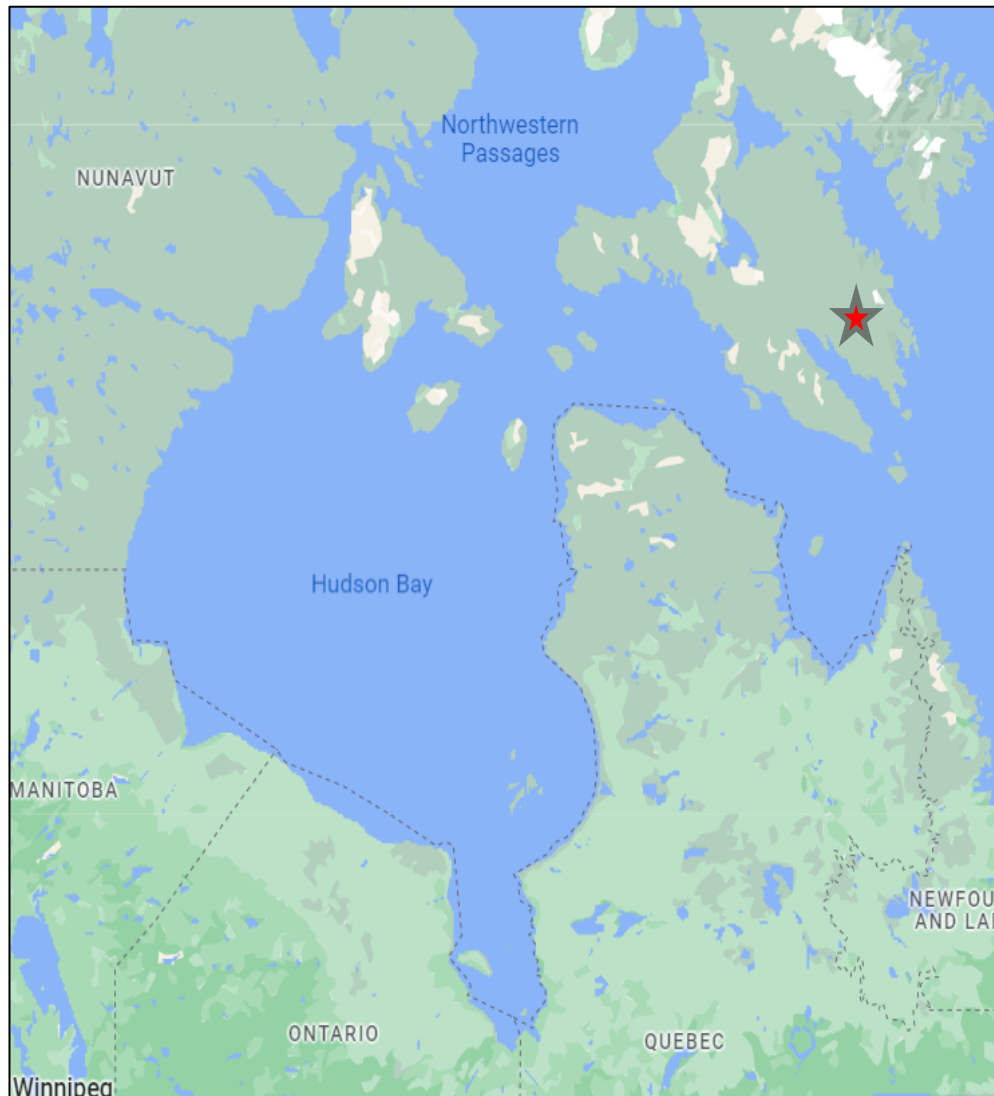
Month	Day	Event
February	16	Board Meeting
March	4	Public Consultation Meeting
March	11	Public Consultation Meeting
March	17	Public Consultation Meeting

NEW DOCUMENTS

Date	Document Title	Document Type
2024-01-14	SEARCH REPORT: Search Results	SEARCH REPORT
2024-01-14	SEARCH REPORT: Search Results	SEARCH REPORT
2024-01-14	SEARCH REPORT: Search Results	SEARCH REPORT
2024-01-14	SEARCH REPORT: Search Results	SEARCH REPORT
2024-01-14	SEARCH REPORT: Search Results	SEARCH REPORT

Project Location

ᐱᓕᓂᐱᓐᓂᐱᓐ ᐃᓕᓕᓐᓂ

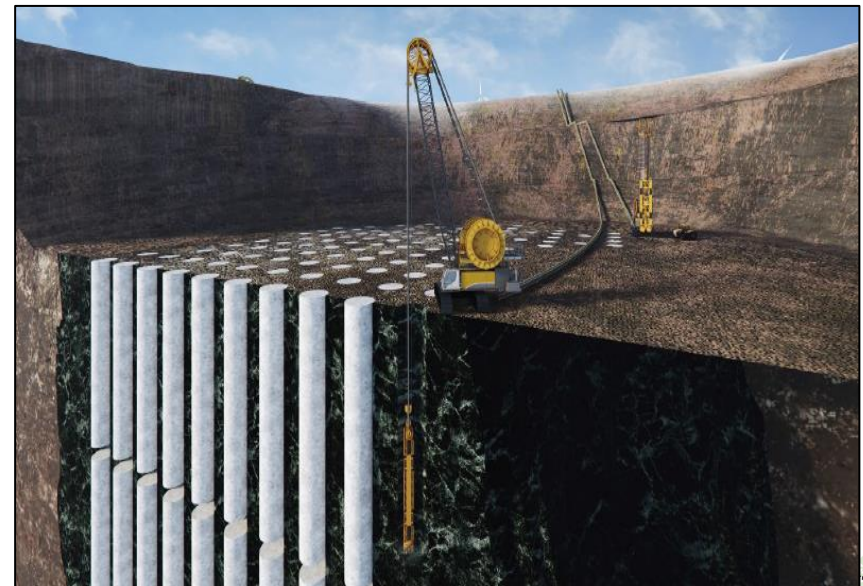
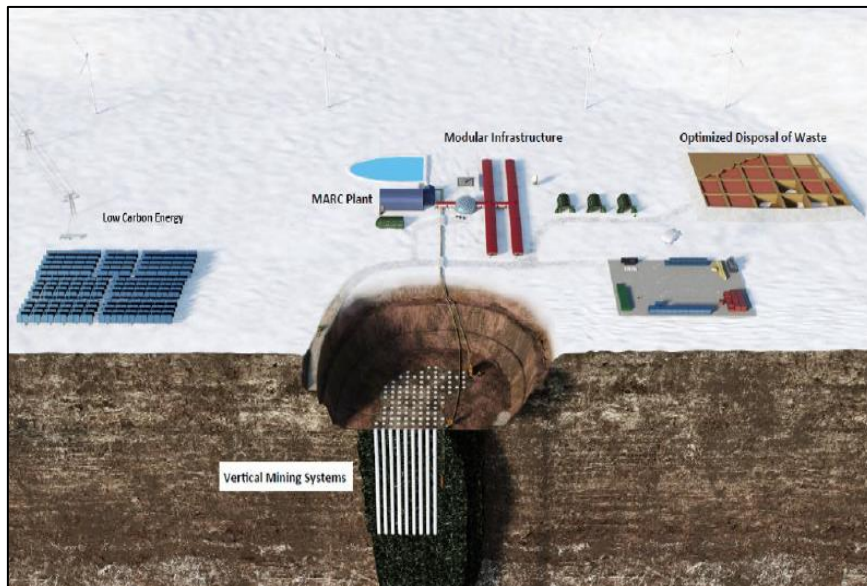


Project Components

- Mining of up to 35 kimberlite pipes
- Modular and mobile kimberlite processing facility

ᐱᑕᐱᐃᑲᐱᑦ ᐃᑕᐱᑦ

- ᐃᑲᑦᑕᑦᐃᑦ ᐱᑦᑕᑲ 35 ᑲᐱᑕᐃᑦ ᑲᑦᑕᑦ
- ᐱᑕᐱᑦᐃᑦ ᐃᑕᐱ ᐃᐃᑕᑲᑦᑕᑦᑲᑦᑕᑦ ᑲᐱᑕᐃᑦ ᐱᑦᐃᑦᑲᐱᑦᑲᑦᑕᑦ ᐱᑕᐱᑦ



Project Components

- Modular and mobile accommodations facility
- Use of aircraft for
- Fuel tank farm
- Possible All-weather or Winter Ice Road from Iqaluit

Project Schedule

ለርቢ ልብ ወለድ ልዑክ ልብ ወለድ

- Pre-Construction (Permitting and technology development):
5+ years (2021-2026)
- Construction: 2 years (2027-2029)
- Operations: 10+ years
- Closure: 2+ years

SCOPING OF THE CHIDLIAK DIAMOND MINE PROJECT

[illegible]

[illegible]

Socio-Economic Impacts

Δ₀^ε b n r^c - p₀ Δ₁ Δ₂ Δ₃ Δ₄ Δ₅ Δ₆ Δ₇ Δ₈ Δ₉ Δ₁₀ Δ₁₁ Δ₁₂ Δ₁₃ Δ₁₄ Δ₁₅ Δ₁₆ Δ₁₇ Δ₁₈ Δ₁₉ Δ₂₀ Δ₂₁ Δ₂₂ Δ₂₃ Δ₂₄ Δ₂₅ Δ₂₆ Δ₂₇ Δ₂₈ Δ₂₉ Δ₃₀ Δ₃₁ Δ₃₂ Δ₃₃ Δ₃₄ Δ₃₅ Δ₃₆ Δ₃₇ Δ₃₈ Δ₃₉ Δ₄₀ Δ₄₁ Δ₄₂ Δ₄₃ Δ₄₄ Δ₄₅ Δ₄₆ Δ₄₇ Δ₄₈ Δ₄₉ Δ₅₀ Δ₅₁ Δ₅₂ Δ₅₃ Δ₅₄ Δ₅₅ Δ₅₆ Δ₅₇ Δ₅₈ Δ₅₉ Δ₆₀ Δ₆₁ Δ₆₂ Δ₆₃ Δ₆₄ Δ₆₅ Δ₆₆ Δ₆₇ Δ₆₈ Δ₆₉ Δ₇₀ Δ₇₁ Δ₇₂ Δ₇₃ Δ₇₄ Δ₇₅ Δ₇₆ Δ₇₇ Δ₇₈ Δ₇₉ Δ₈₀ Δ₈₁ Δ₈₂ Δ₈₃ Δ₈₄ Δ₈₅ Δ₈₆ Δ₈₇ Δ₈₈ Δ₈₉ Δ₉₀ Δ₉₁ Δ₉₂ Δ₉₃ Δ₉₄ Δ₉₅ Δ₉₆ Δ₉₇ Δ₉₈ Δ₉₉ Δ₁₀₀ Δ₁₀₁ Δ₁₀₂ Δ₁₀₃ Δ₁₀₄ Δ₁₀₅ Δ₁₀₆ Δ₁₀₇ Δ₁₀₈ Δ₁₀₉ Δ₁₁₀ Δ₁₁₁ Δ₁₁₂ Δ₁₁₃ Δ₁₁₄ Δ₁₁₅ Δ₁₁₆ Δ₁₁₇ Δ₁₁₈ Δ₁₁₉ Δ₁₂₀ Δ₁₂₁ Δ₁₂₂ Δ₁₂₃ Δ₁₂₄ Δ₁₂₅ Δ₁₂₆ Δ₁₂₇ Δ₁₂₈ Δ₁₂₉ Δ₁₃₀ Δ₁₃₁ Δ₁₃₂ Δ₁₃₃ Δ₁₃₄ Δ₁₃₅ Δ₁₃₆ Δ₁₃₇ Δ₁₃₈ Δ₁₃₉ Δ₁₄₀ Δ₁₄₁ Δ₁₄₂ Δ₁₄₃ Δ₁₄₄ Δ₁₄₅ Δ₁₄₆ Δ₁₄₇ Δ₁₄₈ Δ₁₄₉ Δ₁₅₀ Δ₁₅₁ Δ₁₅₂ Δ₁₅₃ Δ₁₅₄ Δ₁₅₅ Δ₁₅₆ Δ₁₅₇ Δ₁₅₈ Δ₁₅₉ Δ₁₆₀ Δ₁₆₁ Δ₁₆₂ Δ₁₆₃ Δ₁₆₄ Δ₁₆₅ Δ₁₆₆ Δ₁₆₇ Δ₁₆₈ Δ₁₆₉ Δ₁₇₀ Δ₁₇₁ Δ₁₇₂ Δ₁₇₃ Δ₁₇₄ Δ₁₇₅ Δ₁₇₆ Δ₁₇₇ Δ₁₇₈ Δ₁₇₉ Δ₁₈₀ Δ₁₈₁ Δ₁₈₂ Δ₁₈₃ Δ₁₈₄ Δ₁₈₅ Δ₁₈₆ Δ₁₈₇ Δ₁₈₈ Δ₁₈₉ Δ₁₉₀ Δ₁₉₁ Δ₁₉₂ Δ₁₉₃ Δ₁₉₄ Δ₁₉₅ Δ₁₉₆ Δ₁₉₇ Δ₁₉₈ Δ₁₉₉ Δ₂₀₀ Δ₂₀₁ Δ₂₀₂ Δ₂₀₃ Δ₂₀₄ Δ₂₀₅ Δ₂₀₆ Δ₂₀₇ Δ₂₀₈ Δ₂₀₉ Δ₂₁₀ Δ₂₁₁ Δ₂₁₂ Δ₂₁₃ Δ₂₁₄ Δ₂₁₅ Δ₂₁₆ Δ₂₁₇ Δ₂₁₈ Δ₂₁₉ Δ₂₂₀ Δ₂₂₁ Δ₂₂₂ Δ₂₂₃ Δ₂₂₄ Δ₂₂₅ Δ₂₂₆ Δ₂₂₇ Δ₂₂₈ Δ₂₂₉ Δ₂₃₀ Δ₂₃₁ Δ₂₃₂ Δ₂₃₃ Δ₂₃₄ Δ₂₃₅ Δ₂₃₆ Δ₂₃₇ Δ₂₃₈ Δ₂₃₉ Δ₂₄₀ Δ₂₄₁ Δ₂₄₂ Δ₂₄₃ Δ₂₄₄ Δ₂₄₅ Δ₂₄₆ Δ₂₄₇ Δ₂₄₈ Δ₂₄₉ Δ₂₅₀ Δ₂₅₁ Δ₂₅₂ Δ₂₅₃ Δ₂₅₄ Δ₂₅₅ Δ₂₅₆ Δ₂₅₇ Δ₂₅₈ Δ₂₅₉ Δ₂₆₀ Δ₂₆₁ Δ₂₆₂ Δ₂₆₃ Δ₂₆₄ Δ₂₆₅ Δ₂₆₆ Δ₂₆₇ Δ₂₆₈ Δ₂₆₉ Δ₂₇₀ Δ₂₇₁ Δ₂₇₂ Δ₂₇₃ Δ₂₇₄ Δ₂₇₅ Δ₂₇₆ Δ₂₇₇ Δ₂₇₈ Δ₂₇₉ Δ₂₈₀ Δ₂₈₁ Δ₂₈₂ Δ₂₈₃ Δ₂₈₄ Δ₂₈₅ Δ₂₈₆ Δ₂₈₇ Δ₂₈₈ Δ₂₈₉ Δ₂₉₀ Δ₂₉₁ Δ₂₉₂ Δ₂₉₃ Δ₂₉₄ Δ₂₉₅ Δ₂₉₆ Δ₂₉₇ Δ₂₉₈ Δ₂₉₉ Δ₃₀₀ Δ₃₀₁ Δ₃₀₂ Δ₃₀₃ Δ₃₀₄ Δ₃₀₅ Δ₃₀₆ Δ₃₀₇ Δ₃₀₈ Δ₃₀₉ Δ₃₁₀ Δ₃₁₁ Δ₃₁₂ Δ₃₁₃ Δ₃₁₄ Δ₃₁₅ Δ₃₁₆ Δ₃₁₇ Δ₃₁₈ Δ₃₁₉ Δ₃₂₀ Δ₃₂₁ Δ₃₂₂ Δ₃₂₃ Δ₃₂₄ Δ₃₂₅ Δ₃₂₆ Δ₃₂₇ Δ₃₂₈ Δ₃₂₉ Δ₃₃₀ Δ₃₃₁ Δ₃₃₂ Δ₃₃₃ Δ₃₃₄ Δ₃₃₅ Δ₃₃₆ Δ₃₃₇ Δ₃₃₈ Δ₃₃₉ Δ₃₄₀ Δ₃₄₁ Δ₃₄₂ Δ₃₄₃ Δ₃₄₄ Δ₃₄₅ Δ₃₄₆ Δ₃₄₇ Δ₃₄₈ Δ₃₄₉ Δ₃₅₀ Δ₃₅₁ Δ₃₅₂ Δ₃₅₃ Δ₃₅₄ Δ₃₅₅ Δ₃₅₆ Δ₃₅₇ Δ₃₅₈ Δ₃₅₉ Δ₃₆₀ Δ₃₆₁ Δ₃₆₂ Δ₃₆₃ Δ₃₆₄ Δ₃₆₅ Δ₃₆₆ Δ₃₆₇ Δ₃₆₈ Δ₃₆₉ Δ₃₇₀ Δ₃₇₁ Δ₃₇₂ Δ₃₇₃ Δ₃₇₄ Δ₃₇₅ Δ₃₇₆ Δ₃₇₇ Δ₃₇₈ Δ₃₇₉ Δ₃₈₀ Δ₃₈₁ Δ₃₈₂ Δ₃₈₃ Δ₃₈₄ Δ₃₈₅ Δ₃₈₆ Δ₃₈₇ Δ₃₈₈ Δ₃₈₉ Δ₃₉₀ Δ₃₉₁ Δ₃₉₂ Δ₃₉₃ Δ₃₉₄ Δ₃₉₅ Δ₃₉₆ Δ₃₉₇ Δ₃₉₈ Δ₃₉₉ Δ₄₀₀ Δ₄₀₁ Δ₄₀₂ Δ₄₀₃ Δ₄₀₄ Δ₄₀₅ Δ₄₀₆ Δ₄₀₇ Δ₄₀₈ Δ₄₀₉ Δ₄₁₀ Δ₄₁₁ Δ₄₁₂ Δ₄₁₃ Δ₄₁₄ Δ₄₁₅ Δ₄₁₆ Δ₄₁₇



Other Factors

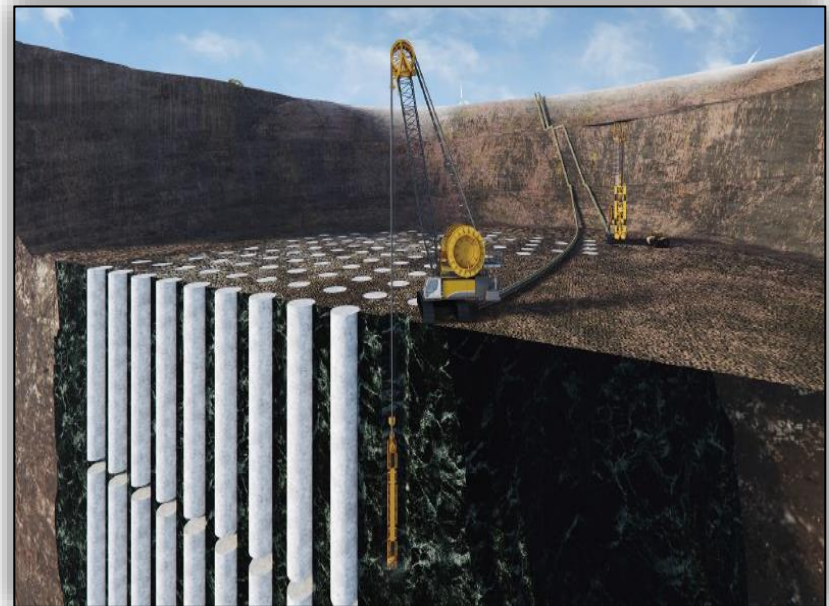
- Climate Change
- Cumulative effects
- Proposed new technologies



Nunavut Impact Review Board

ᐱᓂᓂᓂ ᐃᑦᑎᓂᐸᐸᓂ

- ᓂᑦᑎᓂᐸᐸᓂ ᐱᓂᓂᓂᐸᐸᓂ
- ᐱᓂᓂᓂᐸᐸᓂᐸᐸᓂ ᐱᓂᓂᓂᐸᐸᓂ
- ᐸᓂᓂᓂᐸᐸᓂ ᐸᓂᓂᓂᐸᐸᓂ ᐸᓂᓂᓂᐸᐸᓂ



ᐸᓂᓂᓂ ᐱᓂᓂᓂᐸᐸᓂ ᐸᓂᓂᓂᐸᐸᓂ

[illegible]

The Guidelines instruct the Proponent what NIRB expects to appear in the Impact Statement and how it is presented.

ሊረገግጥና የጥራት ማረጋገጫ ስርዓት ማረጋገጥ
 ወይም የጥራት ማረጋገጫ ስርዓት ማረጋገጥ
 ማረጋገጥና የጥራት ማረጋገጫ ስርዓት ማረጋገጥ
 ማረጋገጥና የጥራት ማረጋገጫ ስርዓት ማረጋገጥ

ΛCnΔ^bh_o^c <^fq▷n^c

- [illegible]

NIRB Wants to Hear From You!

- What do you think about the Project?
- Comments, questions or concerns
- What environmental components are important to you?
- What potential effects do you think this Project might have on the land, animals and people?

መግቢያ ልዩበርሲታዊ ክብረት ጋኅጋረጅ ልሮሞታ!

- ነገረግጽ ልረገጽ ለሮሲታዊ?
- ምክርታዊ፣ ልዩታዊ ምክርታዊ ልረገጽ
- ምክርታዊ ልዩበርሲታዊ ልረገጽ ለሮሲታዊ ልሮሞታ?
- ምክርታዊ ልዩበርሲታዊ ልረገጽ ለሮሲታዊ ልሮሞታ? ልረገጽ ለሮሲታዊ ልሮሞታ?

Fill out a NIRB comment form!

ርርታዊ መግቢያ ልዩበርሲታዊ ክብረት ጋኅጋረጅ ልሮሞታ!

[illegible]

1-866-233-3033

(867) 983-2594

info@nirb.ca

መደቃቢ ደብዳቤ ቤተሰብ
በቤተሰብ 1360
ፊት ጋር፣ መደብ
X0B 0C0

