

Caribou and Meliadine Mine

Agnico Eagle
Response to GN
Animations

September 2023



AGNICO EAGLE



OVERVIEW



AGNICO EAGLE

1. Limitations of collar data.
2. TEMMP Monitoring and Mitigation.
3. TEMMP is responsive.
4. The Terrestrial Advisory Group.
5. Commitment 38 Results.



Limitations of Collar Data



- Collared Qamanirjuaq caribou are less than 0.1% of the herd (~50 out of 200,000 caribou).
- Caribou collars data are useful for:
 - Looking at broad-scale movement patterns and ranges of the herd.
 - Looking at movement behaviour of individuals.
- Collar data cannot:
 - Show where all caribou are.
 - Show where caribou are absent.
- This is why the Terrestrial Environment Management and Monitoring Plan (TEMMP) relies on ground-based monitoring of caribou to trigger mitigation.

CARIBOU MONITORING EVIDENCE

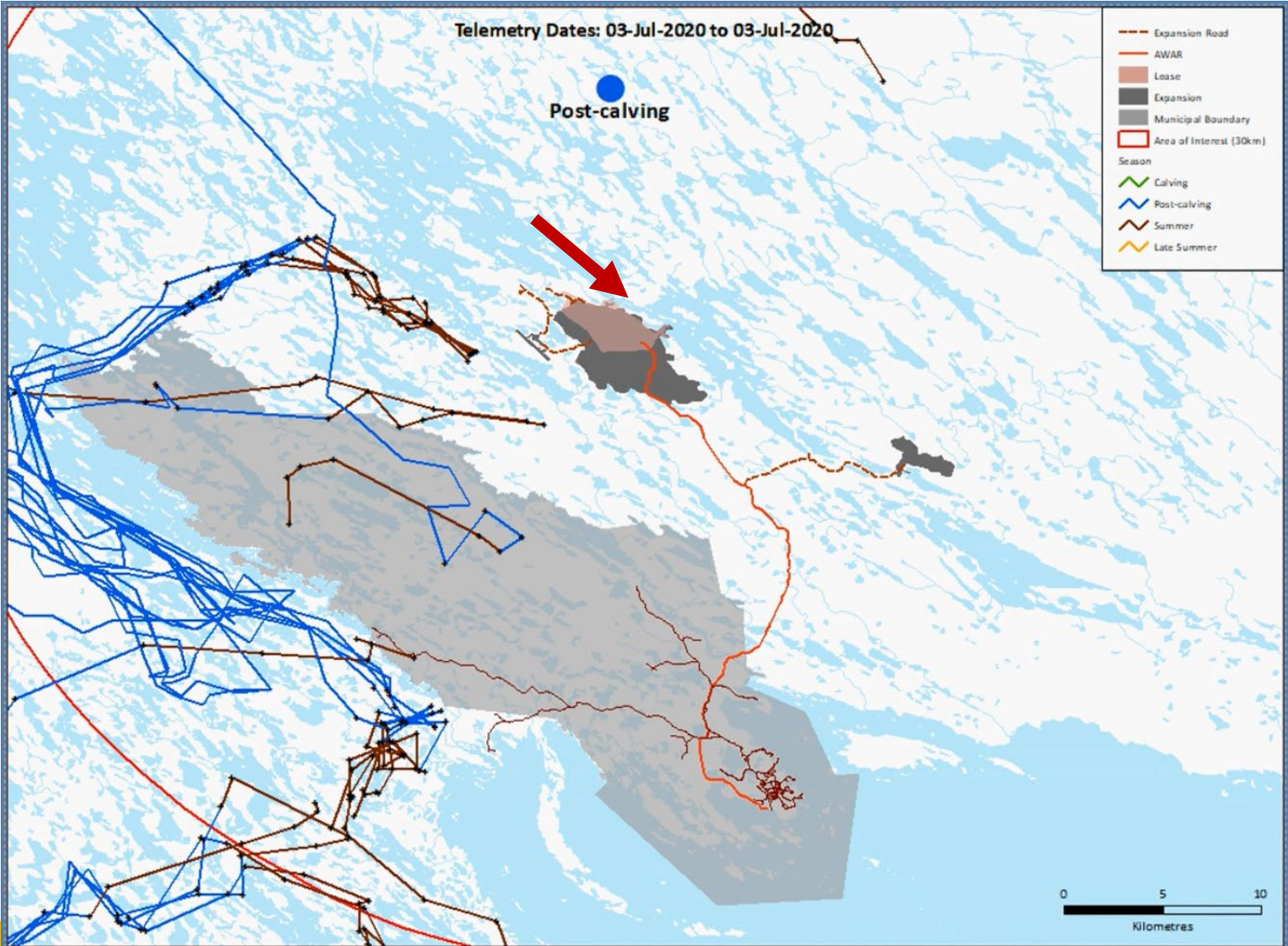


AGNICO EAGLE

- Field monitoring, provides first-hand understanding and knowledge of caribou presence and location.



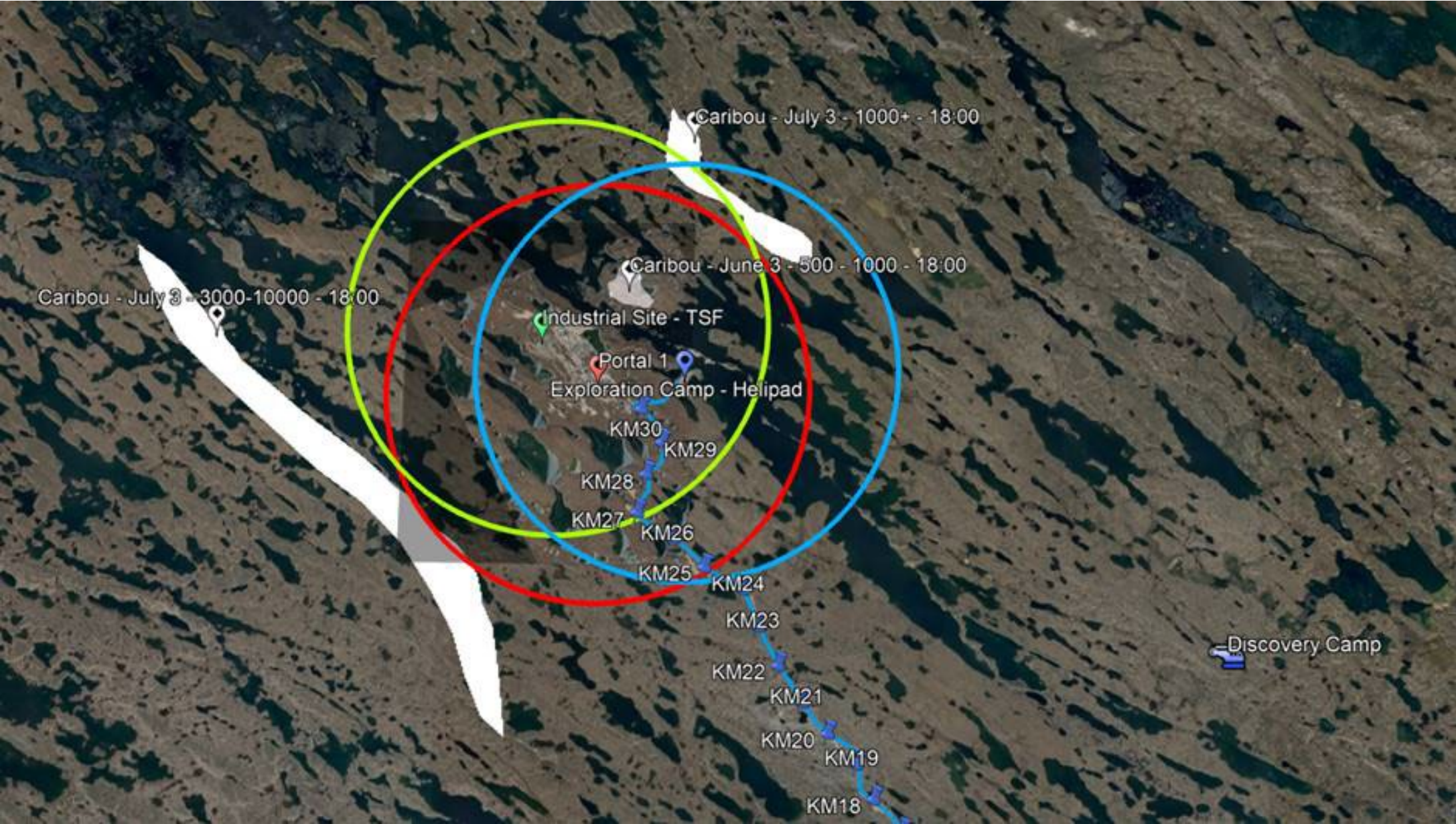
SNAPSHOT OF COLLAR DATA FROM JULY 3, 2020



CARIBOU AT THE MELIADINE NARROWS – JULY 3, 2020



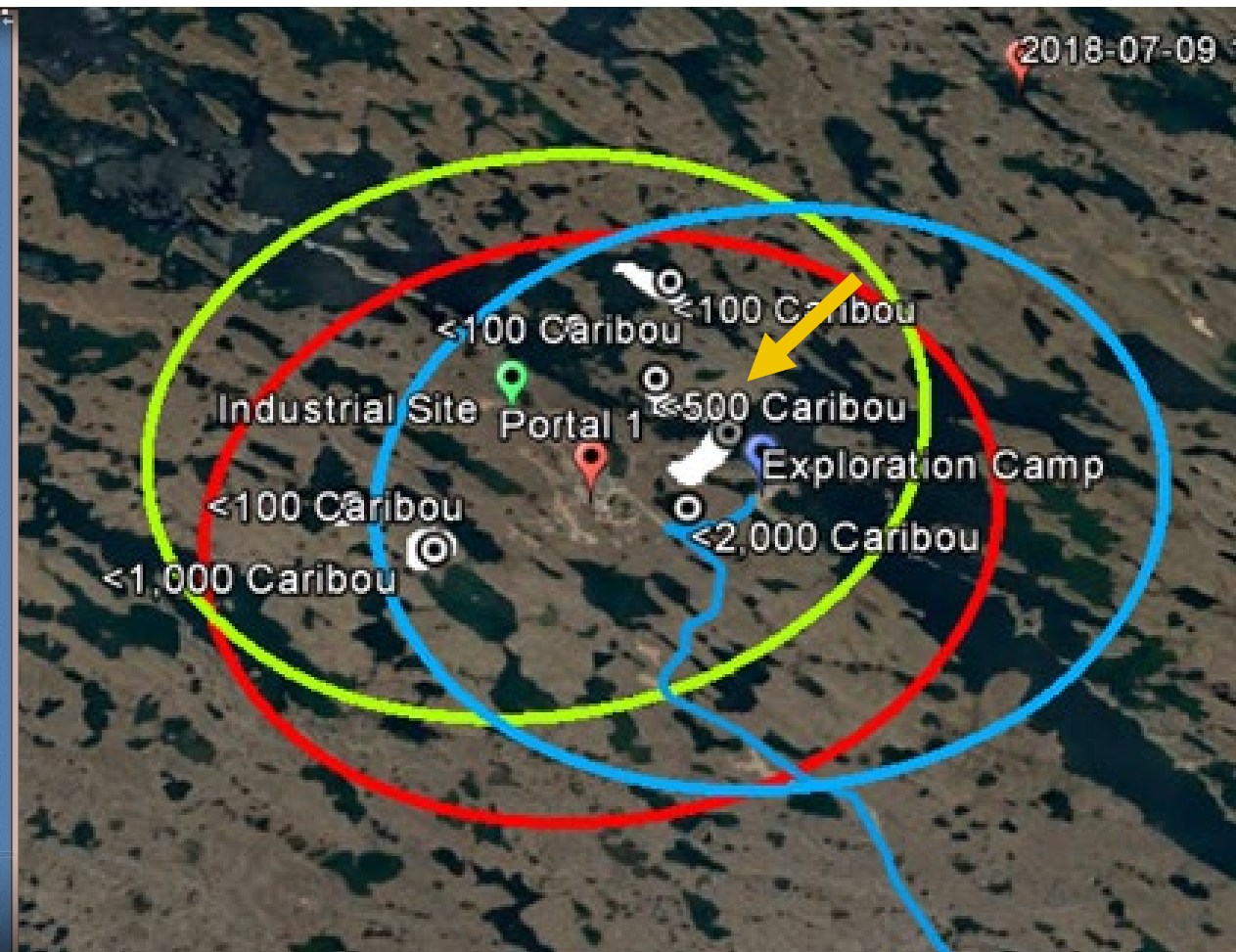
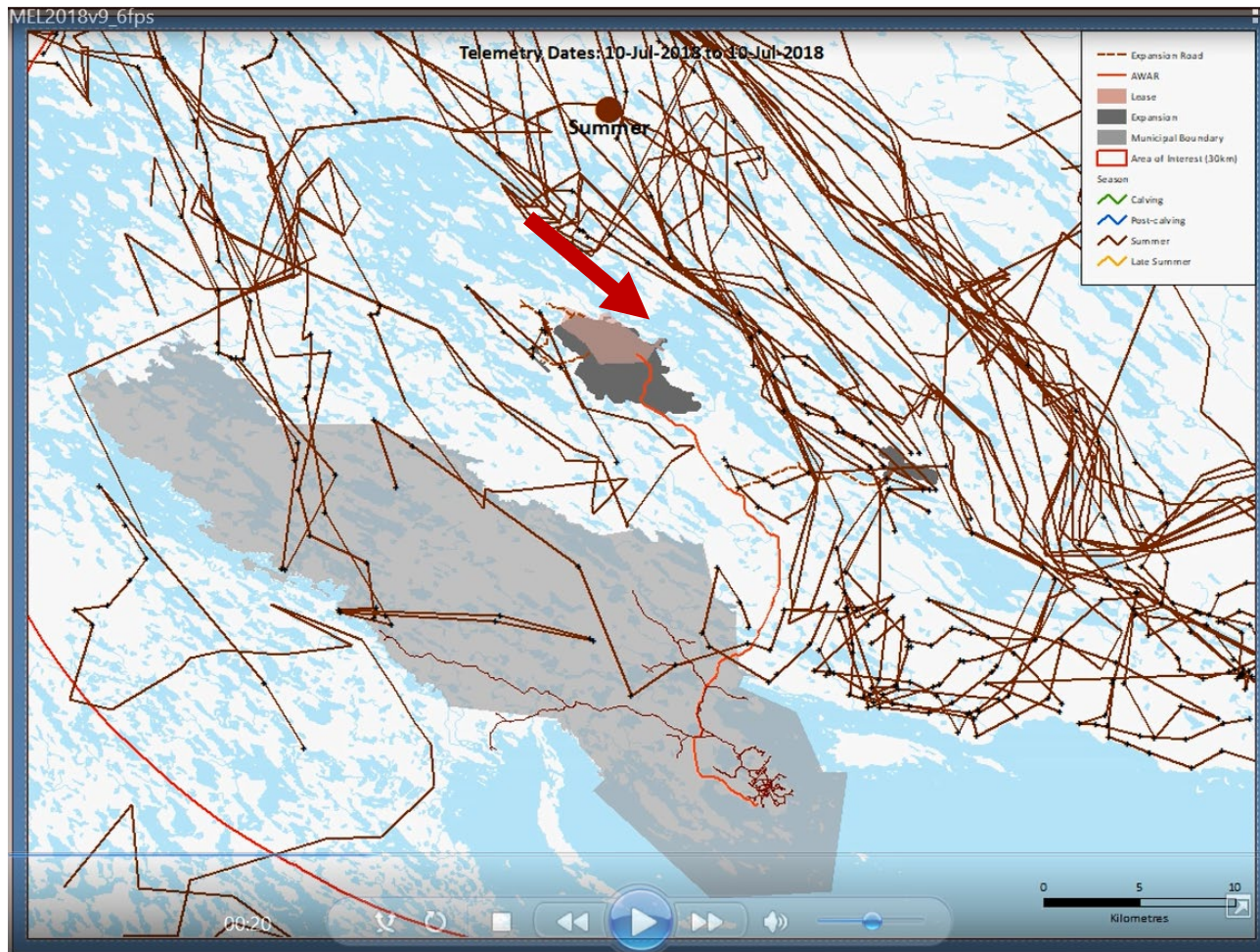
MELIADINE MINE DAILY MONITORING REPORT JULY 3, 2020, EVENING



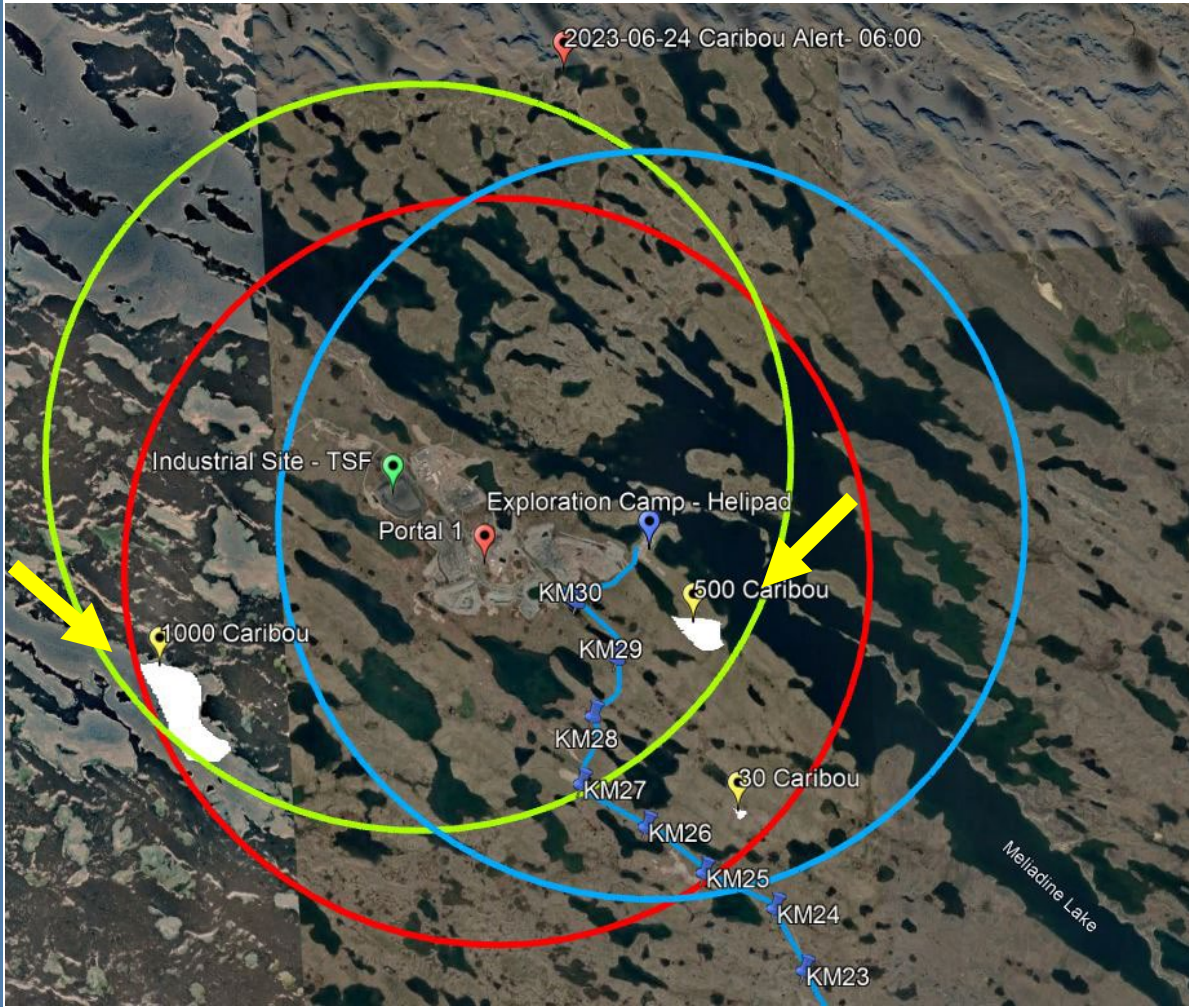
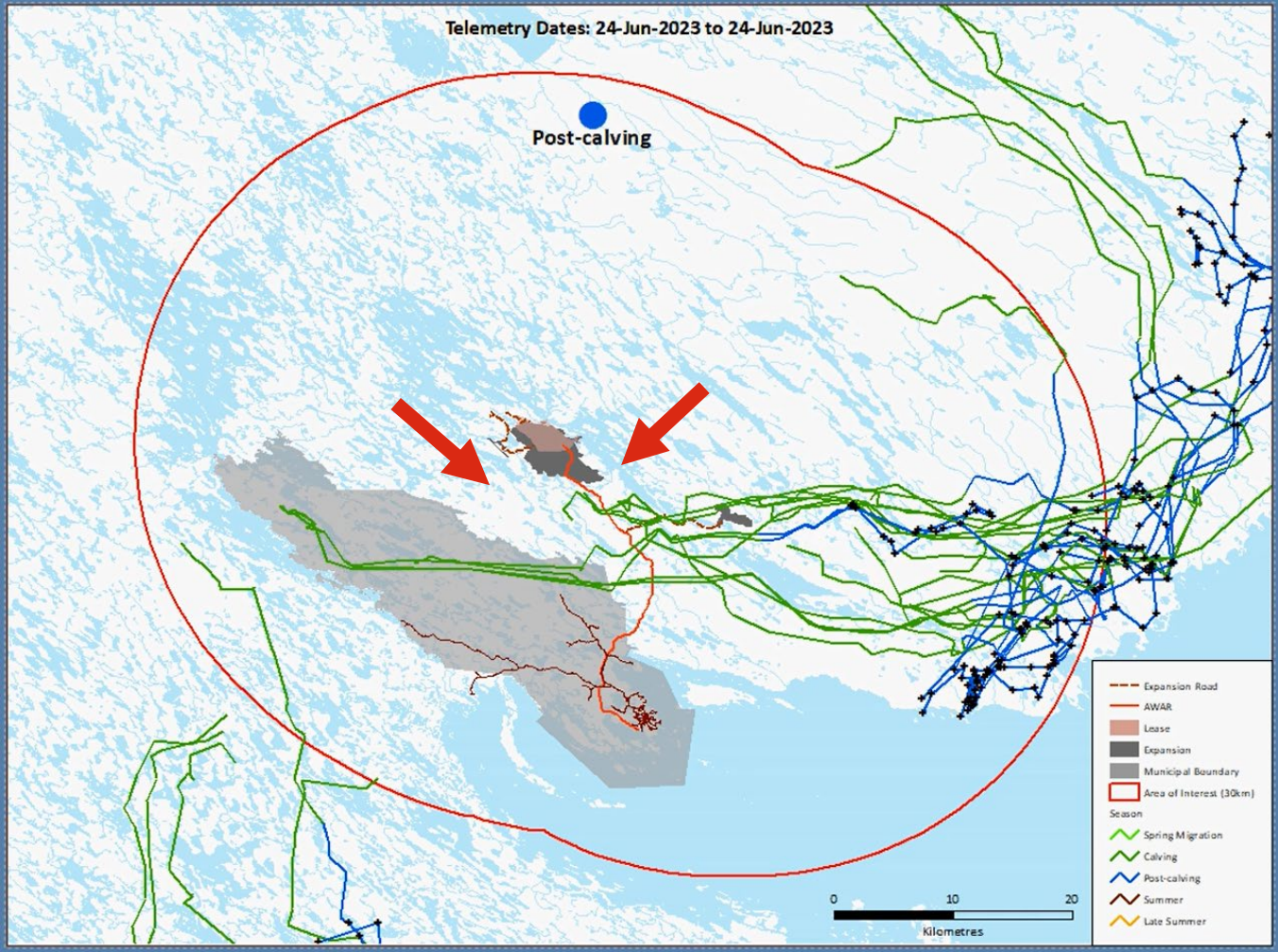
MIGRATION SURVEYS JULY 9,2018

Collared caribou July 9, 2018

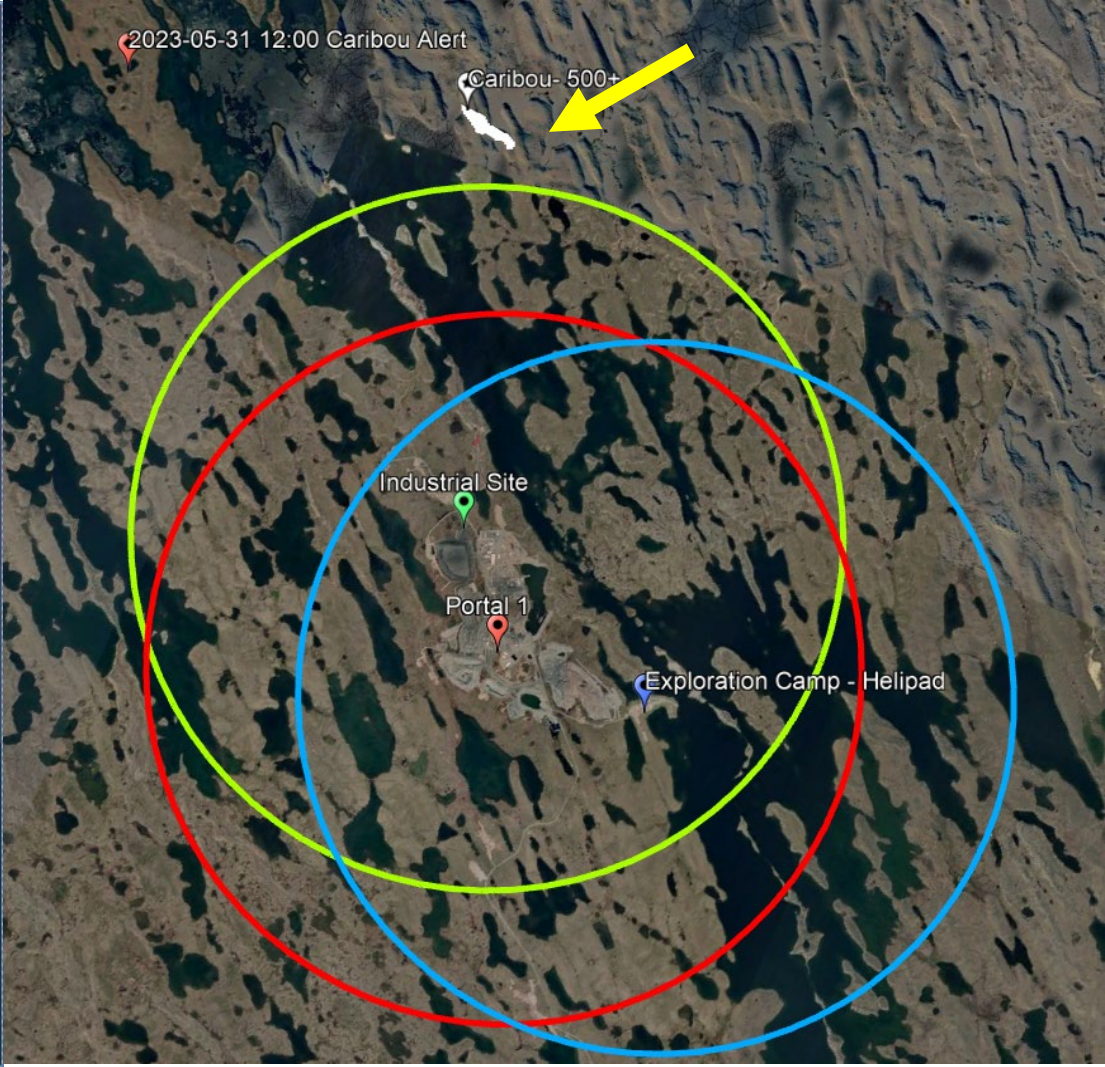
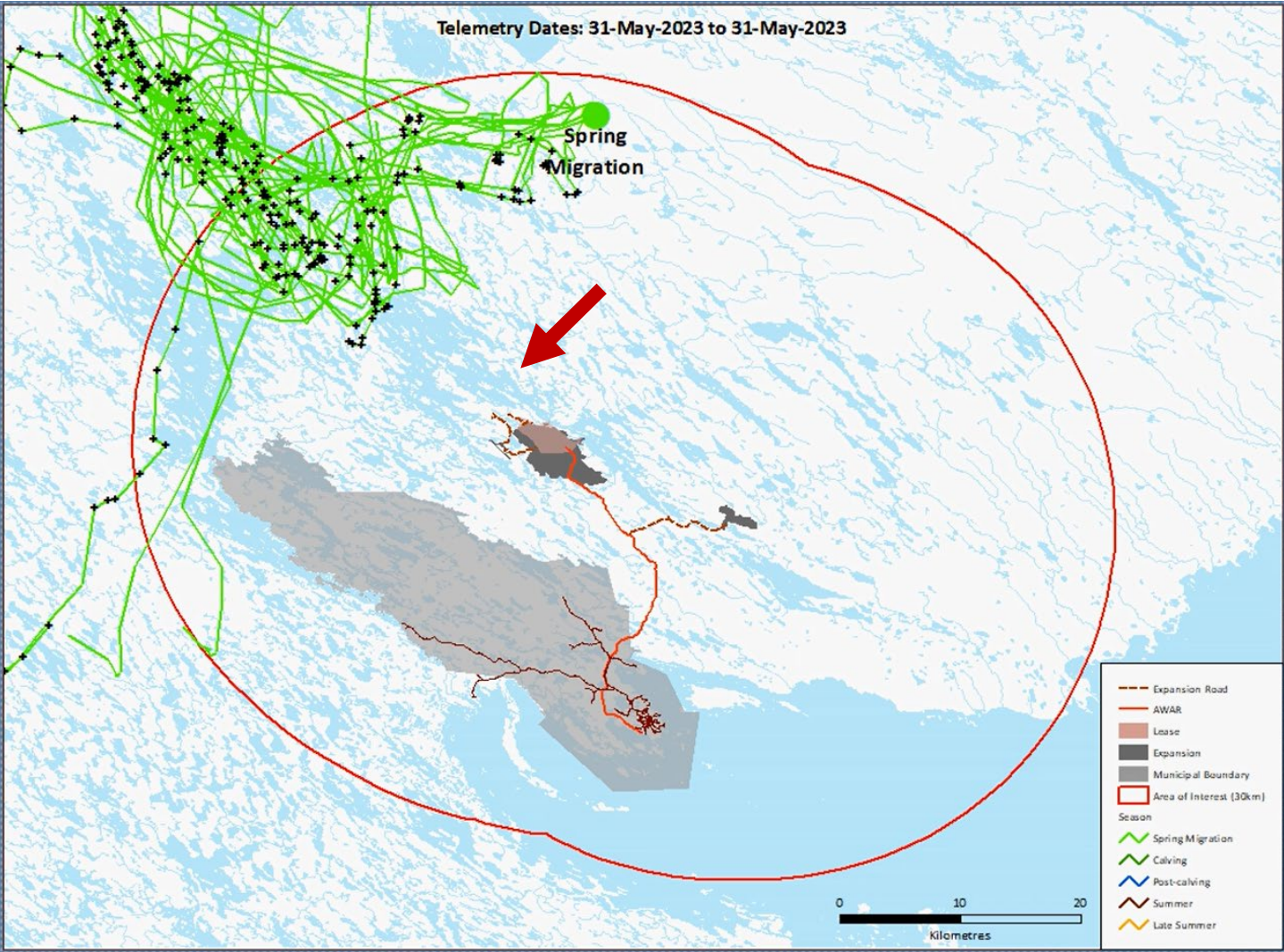
Migration Survey July 9, 2018



CARIBOU REMAIN BEHIND AFTER COLLARS HAVE LEFT - JUNE 24, 2023



CARIBOU ARRIVAL NEAR SITE ON MAY 31, 2023



ANIMATION DOES NOT CONSIDER HOW CONDITIONS CHANGE FOR CARIBOU

- Landuser knowledge tells us that cows with calves do not like to cross lakes when they are thawing.
- During 2020 and 2021, caribou passed by the site in mid July during open water.
- Recently, as caribou passed through in late June while the lakes are still thawing and they do not want to cross the lake.
- If caribou continue to arrive earlier then Narrows may not have suitable crossing conditions for cows or calves



LIMITATIONS OF COLLARS - CONCLUSION

Conclusions on the limitations of collars:

- Collars are useful but have certain limitations – such as collars do not show where all caribou are.
- Monitoring at site provides more fine-scale data than collars on habitat use near the site.
- This monitoring indicates that caribou continue to use the Meliadine narrows.
- Timing and ice conditions may play a role in use of the Narrows.

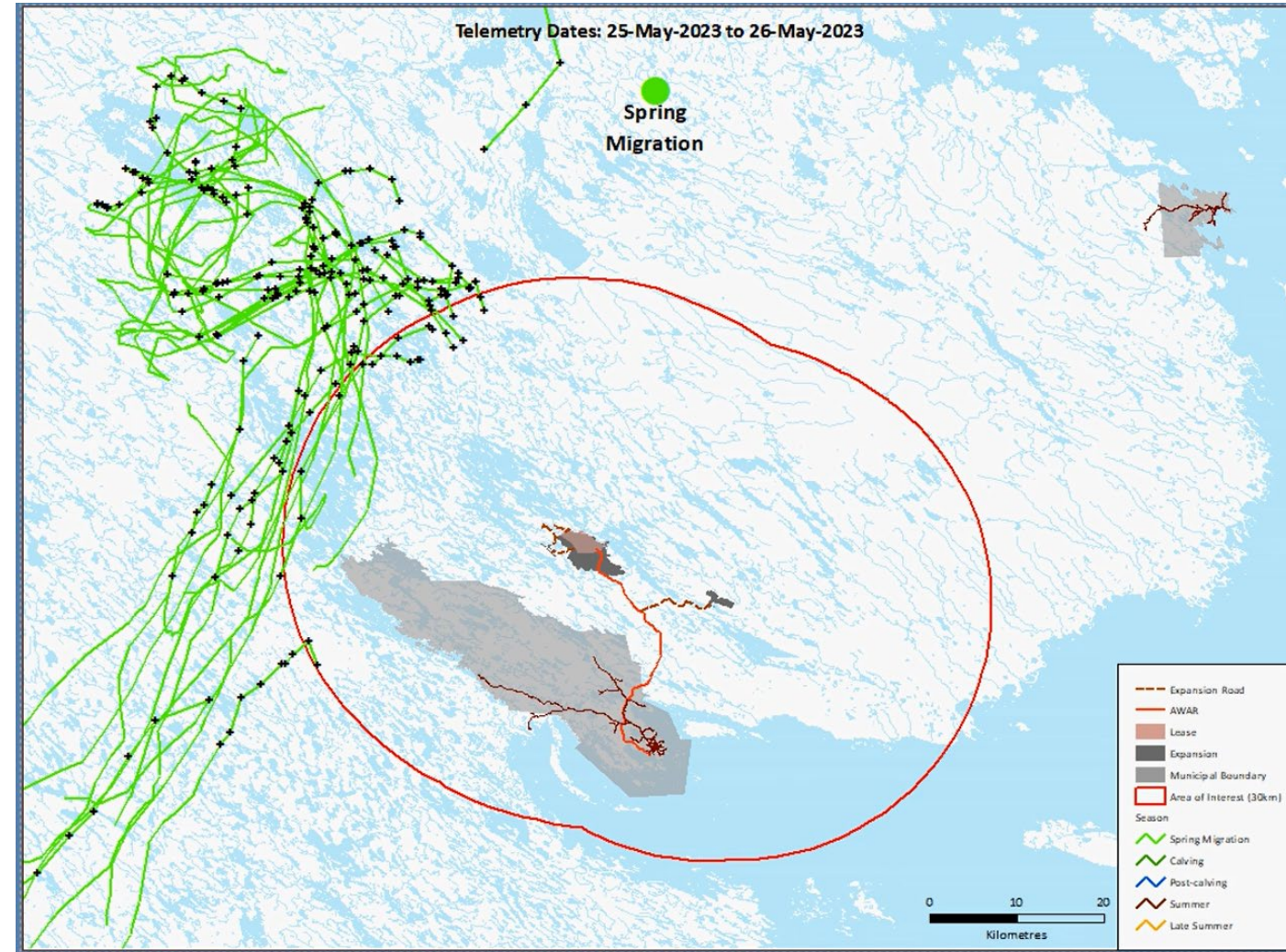


TEMMP Monitoring and Mitigation



TEMMP – COLLARED CARIBOU APPLICATION

- The first indication that caribou are approaching comes from KIA and HTO, who report when caribou are far from the site.
- The Mine also uses collar locations to indicate when caribou are approaching the Mine.
- Field studies are then triggered:
 - Height of Land surveys
 - Road surveys
 - Remote cameras
 - Behaviour surveys



THE TEMMP - HEIGHT OF LAND AND ROAD SURVEYS

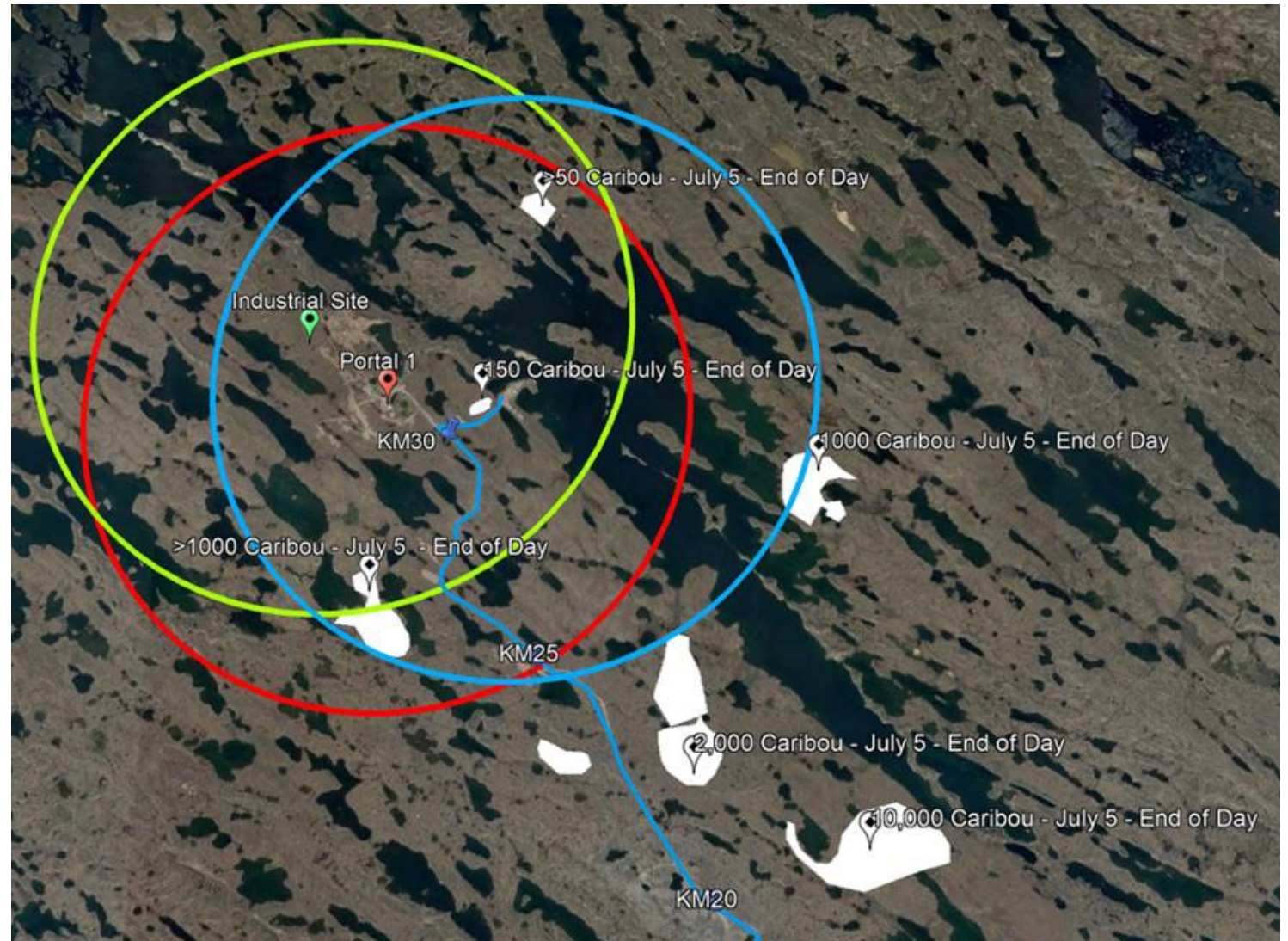
Height of Land Surveys are conducted to identify where groups of caribou are (the white polygons) and whether they are within 5 km of site (circles).

When 50 caribou within 5 km, mine shutdowns occur.

Road Surveys are conducted three times per day on the All Weather Access Road (AWAR).

When large groups of caribou occur near the AWAR, then the road is closed

Caribou have the right-of-way



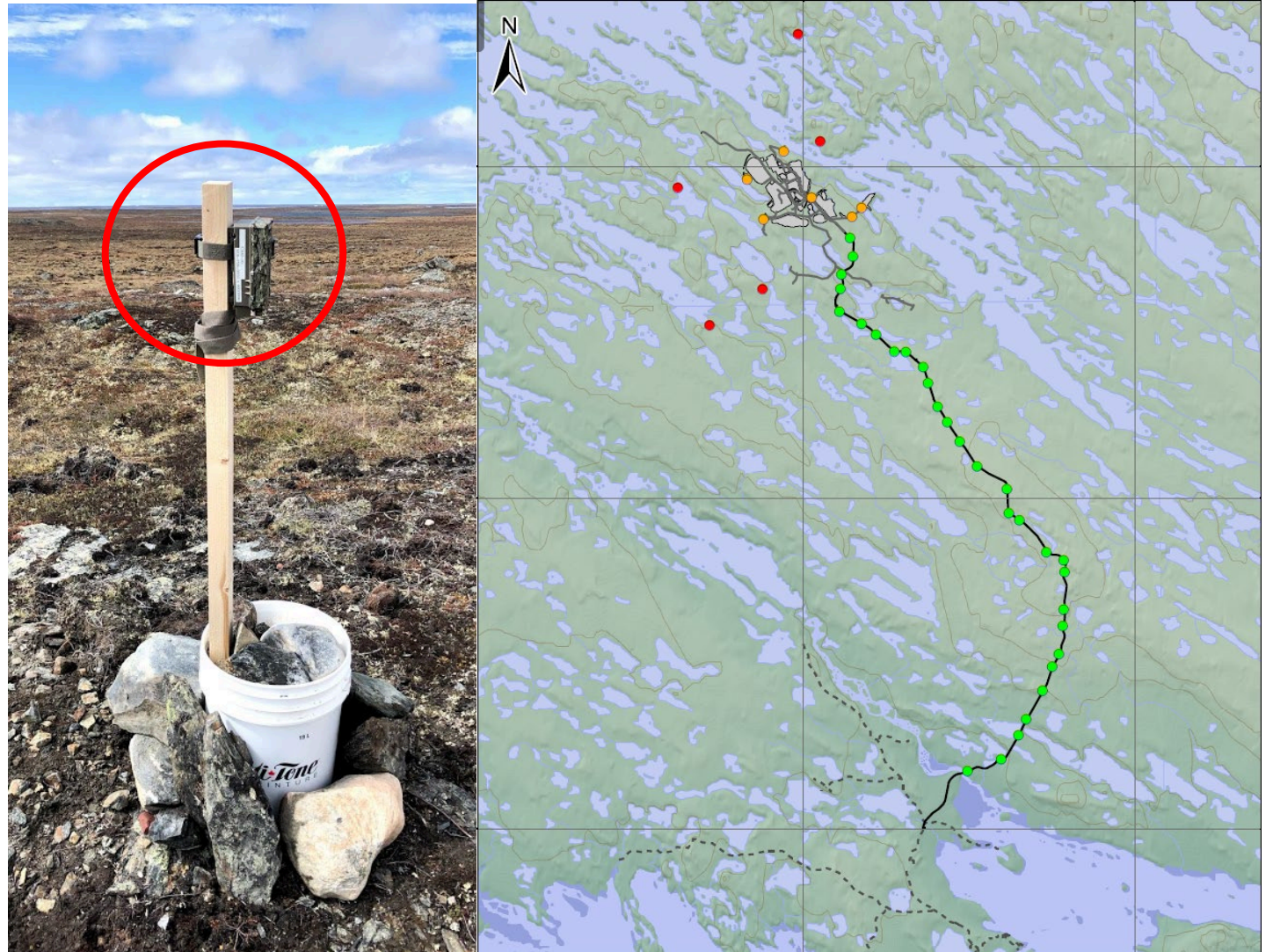
THE TEMMP - CAMERA MONITORING



AGNICO EAGLE

Trail cameras are placed around the mine, at crossings and along the AWAR during June and July 2020-2023.

- Monitor whether caribou cross the road
- Cross in certain locations

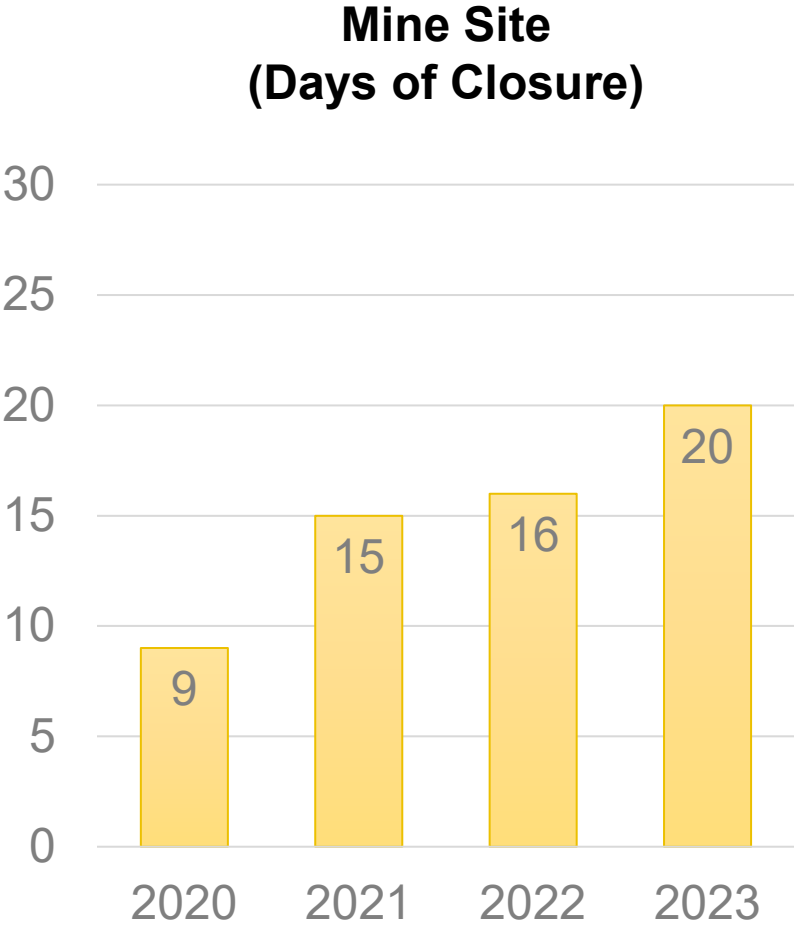
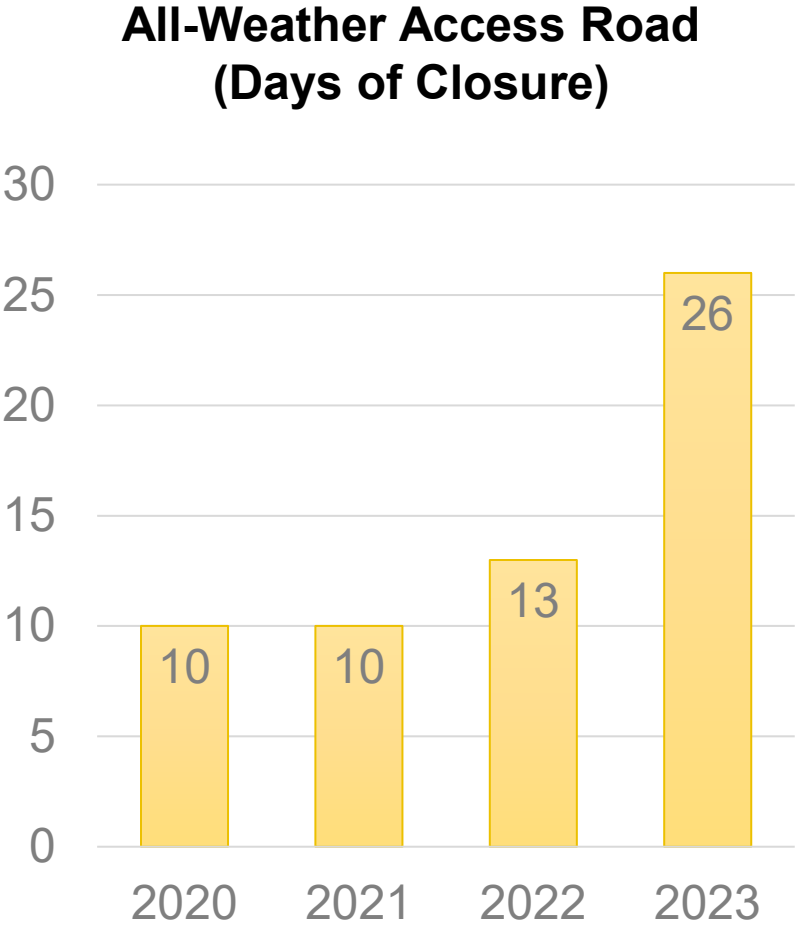


TEMMP is Responsive

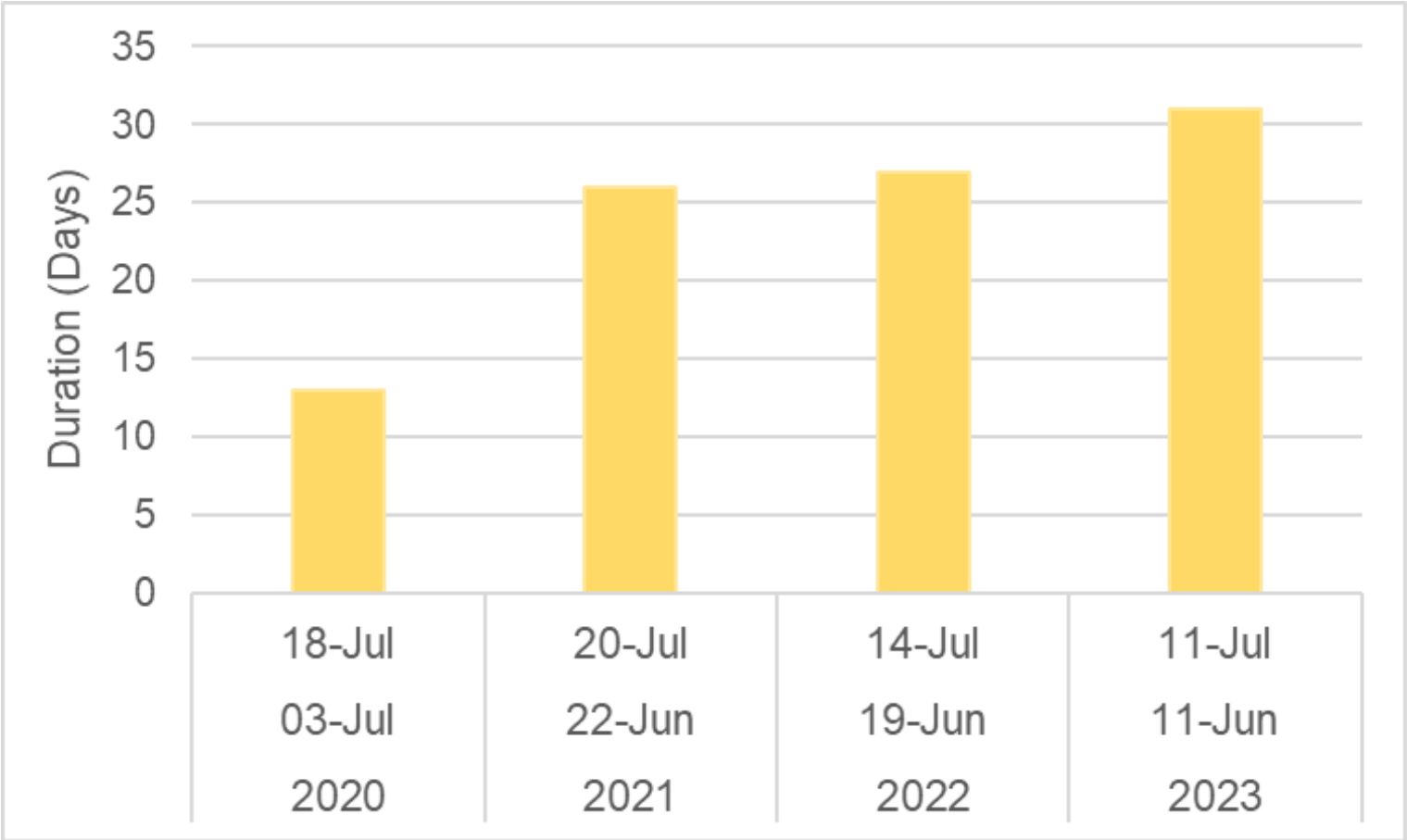


The TEMMP is responsive to changing caribou numbers





When Closures Applied (Dates and Duration) – Mine Site
and AWAR



CARIBOU PROTECTION THAT WORKS

Key existing TEMMP mitigation

- Work suspension protocol – Mine activity shutdown
 - Low profile roads with fine material
 - Low speed limits
 - Caribou right-of-way
-
- The existing mitigation and triggers are working:
 - No Mine-related caribou injuries or mortalities have occurred
 - Caribou move freely through the Mine site and AWAR (WSP 2023)
 - Supports that effects are less than 2014 FEIS predictions



Terrestrial Advisory Group



THE TERRESTRIAL ADVISORY GROUP (TAG)

- The Terrestrial Advisory Group reviews mitigation and monitoring results.
- Asks analysis questions and designs analyses – such as Commitment 38.
- Includes Agnico Eagle IQ and Wildlife Advisor.



- The Commitment 38 study was made during the Waterlines technical discussions and required input on caribou crossing, deflection and paralleling behaviours and zone of influence analysis by the TAG members
- Input on the official study design began at the December 15, 2022 TAG meeting but discussions with the same people occurred since the Waterlines technical discussions
- Further input, IQ and approval of the study design occurred at the April 13, 2023 TAG meeting
- Agnico Eagle implemented the study
- Presentation of the results occurred at the June 28, 2023 TAG meeting.
- Agnico Eagle issued the final Commitment 38 analysis report on July 14, 2023, and as requested by the parties.

- The Commitment 38 analysis developed with the Terrestrial Advisory Group (TAG) uses the same collared caribou data (except for 2023) shown in the GN's animation
- The GN's animation shows observed collared caribou movements on a simple map of water, land, Meliadine Mine and AWAR and Rankin Inlet with emphasis on Mine and AWAR.
- The animation does not consider the factors influencing movement decisions by caribou, which was presented in the Commitment 38 analysis to be:
 - Lakes (avoided)
 - Areas of Vegetation Greenness (preferred growing vegetation)
 - Areas of Heath forb (preferred vegetation community)
- The Commitment 38 results are scientifically defensible, considered shared IQ and TAG input and demonstrate that caribou are not responding to Mine-related activities and are moving freely through the Mine and AWAR. This supports that the existing mitigations are conservative and working.

The TAG will continue to:

- Review annual monitoring reports.
- Discuss and propose adaptive management.
- Receive the 3-times daily reports from ground monitoring that informs mitigation actions.

Examples of TAG collaborations:

- Commitment 38 study design and review.
- Request to update the camera program, which was conducted in 2023.
- Request to update the TEMMP – which is currently under way.





Trading Symbol:
AEM on TSX & NYSE

Investor Relations:
416-847-8665
info@agnicoeagle.com

agnicoeagle.com



Thank you



AGNICO EAGLE