



# B2Gold Nunavut Energy Centre – Addendum Conclusions

TSX **BTO**  
NYSE AMERICAN **BTG**  
NSX **B2G**

TECHNICAL MEETING, COMMUNITY ROUNDTABLE &  
PRE-HEARING CONFERENCE  
OCTOBER 2023

**ACQUIRE**

**DISCOVER**

**FINANCE**

**BUILD**

**OPERATE**

# CAUTIONARY STATEMENTS



Production results and production guidance presented in this presentation reflect total production at the mines B2Gold operates on a 100% project basis. Please see our Annual Information Form dated March 30, 2022 ("2022 AIF") for a discussion of our ownership interest in the mines B2Gold operates. This presentation includes certain "forward-looking information" and "forward-looking statements" (collectively forward-looking statements") within the meaning of applicable Canadian and United States securities legislation, including: projections; outlook; guidance; forecasts; estimates; and other statements regarding future or estimated financial and operational performance, gold production and sales, revenues and cash flows, and capital costs (sustaining and non-sustaining) and operating costs, including projected cash operating costs and AISC, and budgets on a consolidated and mine by mine basis; and including, without limitation: projected gold production, cash operating costs and AISC on a consolidated and mine by mine basis in 2023; total consolidated cash operating costs for 2022 being between \$610 and \$660 per ounce and at AISC of between \$1,010 and \$1,050 per ounce; total consolidated gold production of between 1,000,000 and 1,080,000 ounces in 2023, with cash operating costs of between \$670 and \$730 per ounce and AISC of between \$1,195 and \$1,255 per ounce; the potential for Fekola Regional to provide saprolite material to feed the Fekola mill starting in the third quarter of 2023; the timing and results of a study for the Fekola Regional to review the project economics of a stand-alone oxide mill; the potential for the Fekola complex to produce 800,000 ounces of gold per year starting in 2026; the potential for the Fekola complex to produce 800,000 ounces of gold per year over a 10-year period; B2Gold's attributable share of Calibre's production; the strategic vision of B2Gold and expectations regarding the potential of the Back River Gold District, including the Goose project and the George Project; the ability to leverage B2Gold's in-house construction and global logistics teams, with specific expertise in remote, cold weather environments; the potential to develop the Back River Gold District, including whether such costs may be covered without further equity dilution to B2Gold shareholders; the potential of building a renewable resources facility in the Back River Gold District and integrating energy efficient initiatives; timing, receipt and anticipated effects of applicable shareholder, court and regulatory approvals; projections; outlook; guidance; forecasts; estimates; and other statements regarding future or estimated financial and operational performance, gold production and sales, revenues and cash flows, and capital costs (sustaining and non-sustaining) and operating costs, including projected cash operating costs and AISC, and budgets on a consolidated and mine by mine basis; the ongoing ability to work cooperatively with stakeholders, including but not limited to local communities and all levels of government; B2Gold's continued prioritization of developing the project in a manner that recognizes Indigenous input and concerns and brings long-term socio-economic benefits to the area. All statements in this presentation that address events or developments that we expect to occur in the future are forward-looking statements. Forward-looking statements are statements that are not historical facts and are generally, although not always, identified by words such as "expect", "plan", "anticipate", "project", "target", "potential", "schedule", "forecast", "budget", "estimate", "intend" or "believe" and similar expressions or their negative connotations, or that events or conditions "will", "would", "may", "could", "should" or "might" occur. All such forward-looking statements are based on the opinions and estimates of management as of the date such statements are made..

Forward-looking statements necessarily involve assumptions, risks and uncertainties, certain of which are beyond B2Gold's or Sabina's control, including risks associated with or related to: the inherent risks, costs and uncertainties associated with integrating the businesses successfully and risks of not achieving all or any of the anticipated benefits of the proposed Transaction, or the risk that the anticipated benefits of the proposed Transaction may not be fully realized or take longer to realize than expected; the occurrence of any event, change or other circumstances that could give rise to the termination of the Agreement; the risk that the proposed Transaction will not be consummated within the expected time period, or at all; the duration and extent of the COVID-19 pandemic, the effectiveness of preventative measures and contingency plans put in place by the Company to respond to the COVID-19 pandemic, including, but not limited to, social distancing, a non-essential travel ban, business continuity plans, and efforts to mitigate supply chain disruptions; escalation of travel restrictions on people or products and reductions in the ability of the Company to transport and refine doré; worldwide economic and political disruptions as a result of current macroeconomic conditions or the ongoing conflict between Russia and Ukraine; the volatility of metal prices and B2Gold's common shares; changes in tax laws; the dangers inherent in exploration, development and mining activities; the uncertainty of reserve and resource estimates; not achieving production, cost or other estimates; actual production, development plans and costs differing materially from the estimates contained herein, or in B2Gold's feasibility and other studies; the ability to obtain and maintain any necessary permits, consents or authorizations required for mining activities; environmental regulations or hazards and compliance with complex regulations associated with mining activities; climate change and climate change regulations; the ability to replace mineral reserves and identify acquisition opportunities; the unknown liabilities of companies acquired by B2Gold; the ability to successfully integrate new acquisitions; fluctuations in exchange rates; the availability of financing; financing and debt activities, including potential restrictions imposed on B2Gold's operations as a result thereof and the ability to generate sufficient cash flows; operations in foreign and developing countries and the compliance with foreign laws, including those associated with operations in Mali, Namibia, the Philippines and Colombia and including risks related to changes in foreign laws and changing policies related to mining and local ownership requirements or resource nationalization generally; remote operations and the availability of adequate infrastructure; fluctuations in price and availability of energy and other inputs necessary for mining operations; shortages or cost increases in necessary

equipment, supplies and labour; regulatory, political and country risks, including local instability or acts of terrorism and the effects thereof; the reliance upon contractors, third parties and joint venture partners; the lack of sole decision-making authority related to Filminera Resources Corporation, which owns the Masbate Project; challenges to title or surface rights; the dependence on key personnel and the ability to attract and retain skilled personnel; the risk of an uninsurable or uninsured loss; adverse climate and weather conditions; litigation risk; competition with other mining companies; community support for B2Gold's and Sabina's operations, including risks related to strikes and the halting of such operations from time to time; conflicts with small scale miners; failures of information systems or information security threats; the ability to maintain adequate internal controls over financial reporting as required by law, including Section 404 of the Sarbanes-Oxley Act; compliance with anti-corruption laws, and sanctions or other similar measures; social media and B2Gold's and Sabina's reputation; risks affecting Calibre having an impact on the value of the Company's investment in Calibre, and potential dilution of our equity interest in Calibre; as well as other factors identified and as described in more detail under the heading "Risk Factors" in B2Gold's most recent Annual Information Form, B2Gold's current Form 40-F Annual Report and B2Gold's other filings with Canadian securities regulators and the U.S. Securities and Exchange Commission (the "SEC"), which may be viewed at [www.sedar.com](http://www.sedar.com) and [www.sec.gov](http://www.sec.gov), respectively (the "Websites"), as well as under the heading "Risk Factors" in Sabina's most recent Annual Information Form which may be viewed at [www.sedar.com](http://www.sedar.com). The list is not exhaustive of the factors that may affect B2Gold's forward-looking statements.

B2Gold's forward-looking statements are based on the applicable assumptions and factors management considers reasonable as of the date hereof, based on the information available to management at such time. These assumptions and factors include, but are not limited to, assumptions and factors related to: B2Gold's and Sabina's ability to achieve timely satisfaction of conditions precedent to the Transaction, including with respect to key regulatory and shareholder approvals; B2Gold's and Sabina's ability to carry on current and future operations, including: the duration and effects of COVID-19 on our operations and workforce; development and exploration activities; the timing, extent, duration and economic viability of such operations, including any mineral resources or reserves identified thereby; the accuracy and reliability of estimates, projections, forecasts, studies and assessments; B2Gold's ability to meet or achieve estimates, projections and forecasts; the availability and cost of inputs; the price and market for outputs, including gold; foreign exchange rates; taxation levels; the timely receipt of necessary approvals or permits; the ability to meet current and future obligations; the ability to obtain timely financing on reasonable terms when required; the current and future social, economic and political conditions; and other assumptions and factors generally associated with the mining industry.

B2Gold's forward-looking statements are based on the opinions and estimates of management and reflect their current expectations regarding future events and operating performance and speak only as of the date hereof. B2Gold does not assume any obligation to update forward-looking statements if circumstances or management's beliefs, expectations or opinions should change other than as required by applicable law. There can be no assurance that forward-looking statements will prove to be accurate, and actual results, performance or achievements could differ materially from those expressed in, or implied by, these forward-looking statements. Accordingly, no assurance can be given that any events anticipated by the forward-looking statements will transpire or occur, or if any of them do, what benefits or liabilities B2Gold will derive therefrom. For the reasons set forth above, undue reliance should not be placed on forward-looking statements.

## Non-IFRS Measures

This presentation includes certain terms or performance measures commonly used in the mining industry that are not defined under International Financial Reporting Standards ("IFRS"), including "cash operating costs" and "all-in sustaining costs" (or "AISC"). Non-IFRS measures do not have any standardized meaning prescribed under IFRS, and therefore they may not be comparable to similar measures employed by other companies. The data presented is intended to provide additional information and should not be considered in isolation or as a substitute for measures of performance prepared in accordance with IFRS and should be read in conjunction with B2Gold's consolidated financial statements. Readers should refer to B2Gold's Management Discussion and Analysis, available on the Websites, under the heading "Non-IFRS Measures" for a more detailed discussion of how B2Gold calculates certain of such measures and a reconciliation of certain measures to IFRS terms.

## Cautionary Note to United States Investors

The disclosure in this presentation was prepared in accordance with Canadian National Instrument 43-101 ("NI 43-101"), which differs significantly from the requirements of the SEC, and resource and reserve information contained or referenced in this MD&A may not be comparable to similar information disclosed by public companies subject to the technical disclosure requirements of the SEC. Historical results or feasibility models presented herein are not guarantees or expectations of future performance.

# CONCLUSIONS



- ◆ The addition of the Modification is not expected to alter the predictions of the approved Project FEIS

VCs	FEIS Addendum 2022 – Residual Effects	FEIS Addendum 2022 – Residual Effects Rating Related to FEIS	FEIS Addendum 2022 – Conclusion
Noise and Vibration	Following the implementation of mitigation methods incorporated into the Approved Project will reduce the potential noise effects. However, the potential for residual effects on local noise levels still exists.	Unchanged	There are not expected to be any cumulative interactions with any other, past, present, or future project in the area. Hence, there are no anticipated potential cumulative effects on noise.
Air Quality	No predicted residual effects are anticipated for ambient air quality due to the intermittent nature and low magnitude of the construction and decommissioning emissions, which can be even further reduced through mitigation.	Unchanged	The Project's overall effect on Air Quality remains Not Significant with the addition of the Modification Package.
Vegetation and Special Landscape Features	No additional residual effects are anticipated to vegetation and special landscape feature VECs beyond those already identified in the FEIS (Sabina 2015)	Unchanged	The Project's overall effect on Vegetation and Special Landscape Features remains Not Significant with the addition of the Modification Package.

# CONCLUSIONS



- ◆ The addition of the Modification is not expected to alter the predictions of the approved Project FEIS

VCs	FEIS Addendum 2022 – Residual Effects	FEIS Addendum 2022 – Residual Effects Rating Related to FEIS	FEIS Addendum 2022 – Conclusion
Caribou	The Wildlife Mitigation and Monitoring Program Plan contains mitigation, management, and monitoring actions that are in place at the Approved Project to reduce or eliminate potential effects to wildlife including caribou. Some mitigations relevant to the Modification are already included in the WMMP Plan, while others are specific to wind towers and will be outlined in detail prior to the onset of construction in an updated WMMP Plan where required.	Unchanged	No change is expected in the 2015 FEIS conclusion for caribou with the addition of the Modification package.
Muskox	Habitat loss is the only potential effect predicted to have a residual effect after mitigation. The direction of the residual effect of muskox habitat loss and alteration is negative, as a small but measurable amount of habitat will be lost. Overall, the effect of habitat loss for muskox due to the Modification is assessed as Not Significant.	Unchanged	The minimal amount of additional loss of high-quality habitat due to the Modification PDA will not change the conclusions of the FEIS and will not contribute any additional cumulative effect to muskox
Grizzly Bears	Habitat loss is the only potential effect predicted to have a residual effect after mitigation. The direction of the residual effect of grizzly bear habitat loss and alteration is negative, as a small but measurable amount of habitat will be lost. Overall, the effect of habitat loss for grizzly bears due to the Modification is considered negligible and is assessed as Not Significant.	Unchanged	The minimal amount of additional loss of habitat due to the Modification PDA will not change the conclusions of the FEIS and will not contribute any additional cumulative effect to grizzly bears. The conclusions of the FEIS remain unchanged, as the Modification will not result in any additional cumulative effects to grizzly bears.

# CONCLUSIONS



- ◆ The addition of the Modification is not expected to alter the predictions of the approved Project FEIS

VCs	FEIS Addendum 2022 – Residual Effects	FEIS Addendum 2022 – Residual Effects Rating Related to FEIS	FEIS Addendum 2022 – Conclusion
Furbearers	The effects of habitat loss, sensory disturbance, and attraction on furbearers were assessed for the Modification. With mitigation, no residual effects to furbearers are anticipated, as the effects are predicted to remain within the scope of what was assessed for the Approved Project FEIS, and are considered to be reduced further with mitigation measures.	Unchanged	No residual effects are predicted due to the Modification package and no change in cumulative effects of the Approved Project are therefore predicted.
Migratory Birds	The WMMP Plan contains mitigation, management, and monitoring actions that are in place at the Approved Project to reduce or eliminate potential effects to wildlife including migratory birds (WMMP Plan 2019). Some mitigations relevant to the Modification are already included in the WMMP Plan, while others are specific to wind turbines and will be updated in the WMMP Plan prior to the onset of construction, and summarized below. With mitigation, no residual effects are predicted for migratory birds due to the Modification package. Sabina has exceeded baseline program requirements, mitigation, and follow-up monitoring guidance from CWS (EC 2007).	Unchanged	No residual effects are predicted due to the Modification package and no change in cumulative effects of the Approved Project are therefore predicted.



# CONCLUSIONS



- ◆ The addition of the Modification is not expected to alter the predictions of the approved Project FEIS

VCs	FEIS Addendum 2022 – Residual Effects	FEIS Addendum 2022 – Residual Effects Rating Related to FEIS	FEIS Addendum 2022 – Conclusion
Raptors	The WMMP Plan contains mitigation, management, and monitoring actions that are in place at the Approved Project to reduce or eliminate potential effects to wildlife including raptors (WMMP Plan 2019). Some mitigations relevant to the Modification are already included in the WMMP Plan, while others are specific to WTGs and will be added prior to the onset of construction. With mitigation, no residual effects are predicted due to the Modification package and no change to the predicted effects of the Approved Project FEIS (Sabina 2015) are anticipated.	Unchanged	No residual effects are predicted due to the Modification package and no change in cumulative effects of the Approved Project are therefore predicted.
Freshwater Environment	It is anticipated that there will be no measurable residual effect associated with the Modification for the freshwater environment. The only residual effects with a likely probability include the crossing footprint and the changes in stream flows during operations, and these Modification pathways will be subject to annual monitoring and inspections under the existing Road Management Plan.	Unchanged	As the Modification will not result in measurable residual effects for freshwater environment VECs, there are no potential residual effects that could act cumulatively with other Approved Project potential effects. Therefore, no cumulative effects or transboundary effects are expected on the freshwater environment VECs.

# CONCLUSIONS



- ◆ The addition of the Modification is not expected to alter the predictions of the approved Project FEIS

VCs	FEIS Addendum 2022 – Residual Effects	FEIS Addendum 2022 – Residual Effects Rating Related to FEIS	FEIS Addendum 2022 – Conclusion
Archaeology	No archaeological sites have been identified in conflict with the Modification and, therefore, mitigation measures are not required prior to construction. Residual effects are not anticipated for unknown archaeological sites as previous AIAs conducted in the proposed development areas have not identified any archaeological sites in conflict. If a previously unidentified archaeological site is discovered in conflict with the Modification during construction, Sabina has a Cultural and Heritage Resources Protection Plan (CHRPP) that was developed for the FEIS.	Unchanged	As the Modification will not result in measurable residual effects for archaeology VSECs, there are no potential residual effects that could act cumulatively with other Approved Project potential effects.
Socio-economics	No new adverse socio-economic interactions are anticipated, as the proposed modifications will not create any new pathways for effects to be created. While some additional (beneficial) opportunities could result from the construction and operation of renewable energy infrastructure, these are minor in comparison to existing benefits of the Approved Project. As a result, potential residual and cumulative effects remain the same as those assessed in the FEIS.	Unchanged	The Project's overall effect on Socio-economics remains Not Significant with the addition of the Modification Package, while several benefits will continue to be created.

# CONCLUSIONS



- ◆ The addition of the Modification is not expected to alter the predictions of the approved Project FEIS

VCs	FEIS Addendum 2022 – Residual Effects	FEIS Addendum 2022 – Residual Effects Rating Related to FEIS	FEIS Addendum 2022 – Conclusion
Land Use	No interaction with non-traditional land and resource use is anticipated, as the proposed modifications are not located in an area with known non-traditional land and resource use activity. As a result, potential residual and cumulative effects will be the same as those assessed in the FEIS. Additional interactions with traditional land users could occur but are considered minor. The land required for wind turbines is small in comparison to the Approved Project PDA, is located directly adjacent to it, and is situated in an area not identified as a key destination for land users and/or harvesting. For these and other reasons, potential residual and cumulative effects remain the same as those assessed in the FEIS.	Unchanged	The Project's overall effect on Land Use remains Not Significant with the addition of the Modification Package.





**B2GOLD**

## **CONTACT DETAILS**

B2Gold Corp.  
Suite 3400  
666 Burrard Street  
Vancouver, BC  
Canada, V6C 2X8

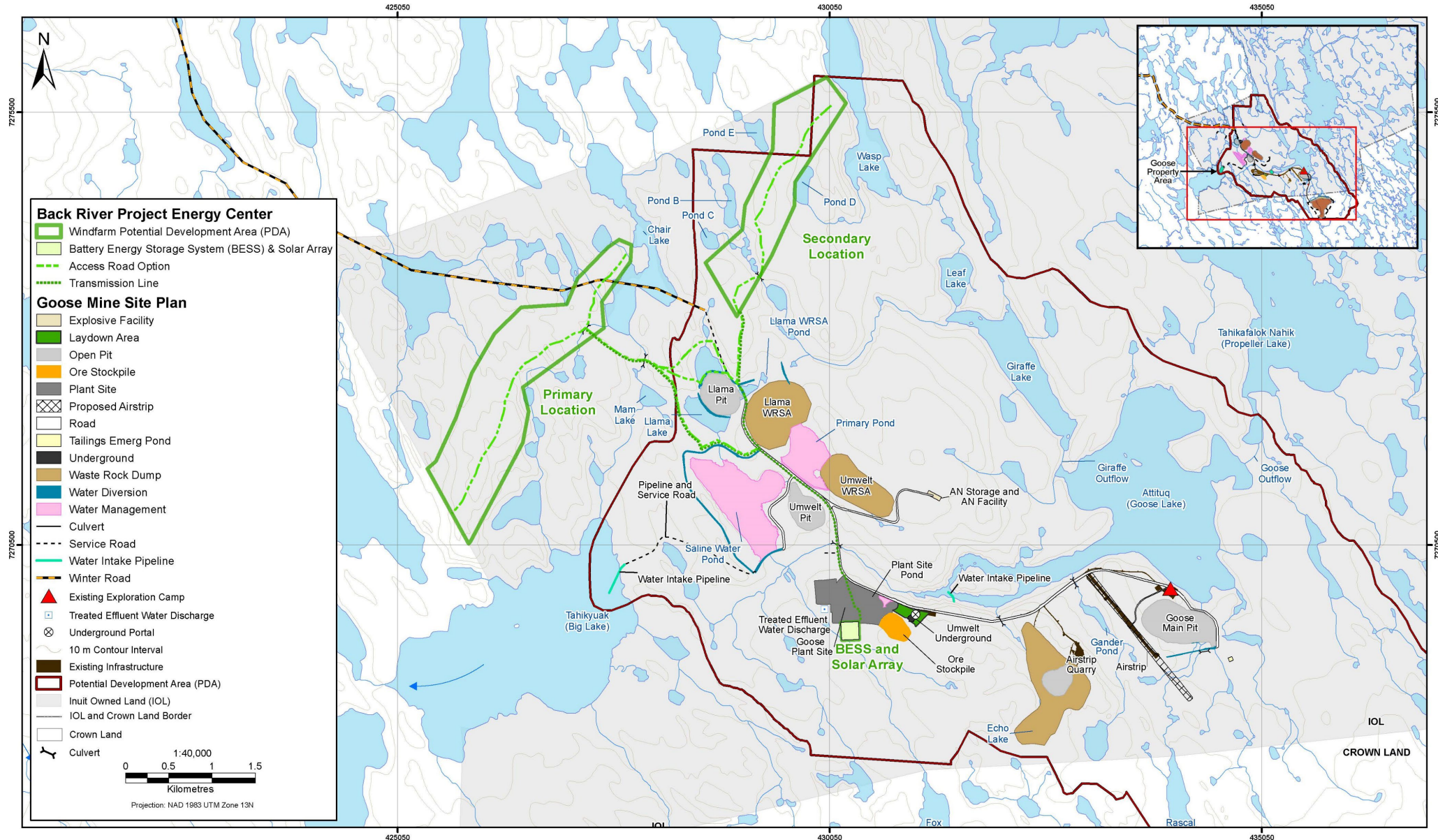
Tel: +1 604 681 8371  
Fax: +1 604 681 6209

Email: [investor@b2gold.com](mailto:investor@b2gold.com)  
Website: [www.b2gold.com](http://www.b2gold.com)

**Koana**

**Thank you**

# PROPOSED LAYOUT





# BACK RIVER ENERGY CENTRE PROJECT

The Back River Project Energy Centre, a wind generation facility, solar panel array and Battery Energy Storage System, capable of supplying clean energy to the Back River Project Mine.

Up to **13** planned  
Wind Turbine Generators.

Hub Height 111 m

Rotor Length 69 m

Rotor Diameter 138 m

Between

**4.0 and 4.5 MW**

power capacity per wind turbine giving the system a generation capacity of approximately 55 MW of electricity, which is sufficient to cleanly power the Back River Project Mine.

**Solar Array and  
Electrical Station**  
will be located near the  
Diesel Power Plant.

**Electrical transmission lines** will be laid directly on the tundra and/or laid directly adjacent to the access roads and covered with aggregate.

**Solar panels** may also be added.

Additional electricity generated by the wind turbines and solar array will be stored by the **Battery Energy Storage System**. The Battery Energy Storage System consists of lithium-ion batteries stored in a seacan on an aggregate pad and will be capable of storing energy to be used at times when wind and solar energy is not available.

Approximately  
**500 m**  
between wind turbines.

# KEY MITIGATION

- Noise will attenuate to 45 db by 500 m, which will not disturb animals (see Noise to right).
- The wind towers will be shut down when groups of caribou approach during sensitive seasons.
- Behavioural and avoidance monitoring will determine if caribou are bothered by the wind tower and allow for adaptive management.
- The wind towers will be shut down during peak bird migration, at night during fog – research worldwide has shown that this combination of conditions can be dangerous for birds around wind towers.
- Monitoring will look for bird mortalities due to the wind towers and allow for adaptive management.

# BENEFITS



Reduction of up to  
**~700 fuel  
truck trips  
per year**

Reduction of  
**~15% sealifts  
per year**

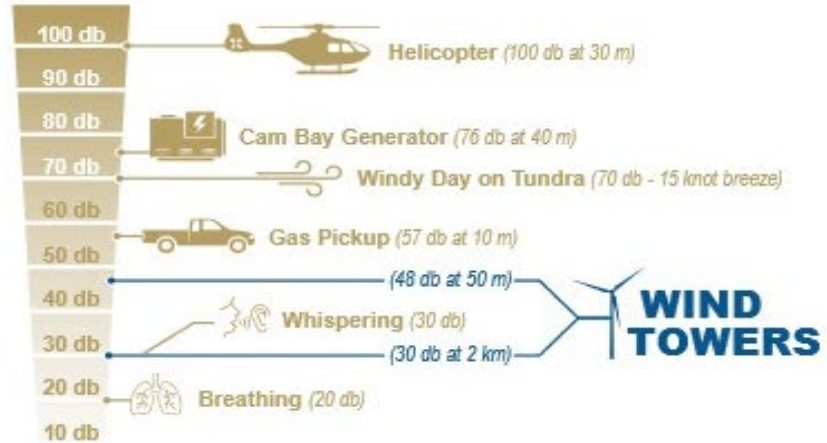


**~50%  
less fuel per year**

**~50%  
less greenhouse  
gas emissions**

# NOISE

Sabina conducted noise modeling to determine how loud the wind towers will be at various distances. Noise is measured in decibels (db) which is a logarithmic scale. That means the noise you hear doubles with every 7 db.



At 500 m from the wind towers, the noise will be similar to a person talking quietly and barely above the noise of a typical day on the tundra.

# HEIGHT COMPARISON



The taller that wind towers are, the more efficient they can be. Being tall avoids the boundary layer of slow-moving air near the surface and allows for large, slower-moving blades.

