



**AGNICO EAGLE**

GOT, MEADOW RIVER, MEADOWBANK AND WHITE HILLS  
EXPLORATION PROJECTS

**2023 Annual Report**

Screening Decision  
15EN050

Prepared by:

**Agnico Eagle Mines Limited, Exploration Division**

February 2024

Submitted to:

**Nunavut Impact Review Board**

**Contact:**

**Agnico Eagle Mines Ltd.**

**David Frenette**

Environmental Coordinator

765 Chemin de la mine Goldex

Val-d'Or, Quebec, J9P7G4

[david.frenette@agnicoeagle.com](mailto:david.frenette@agnicoeagle.com)

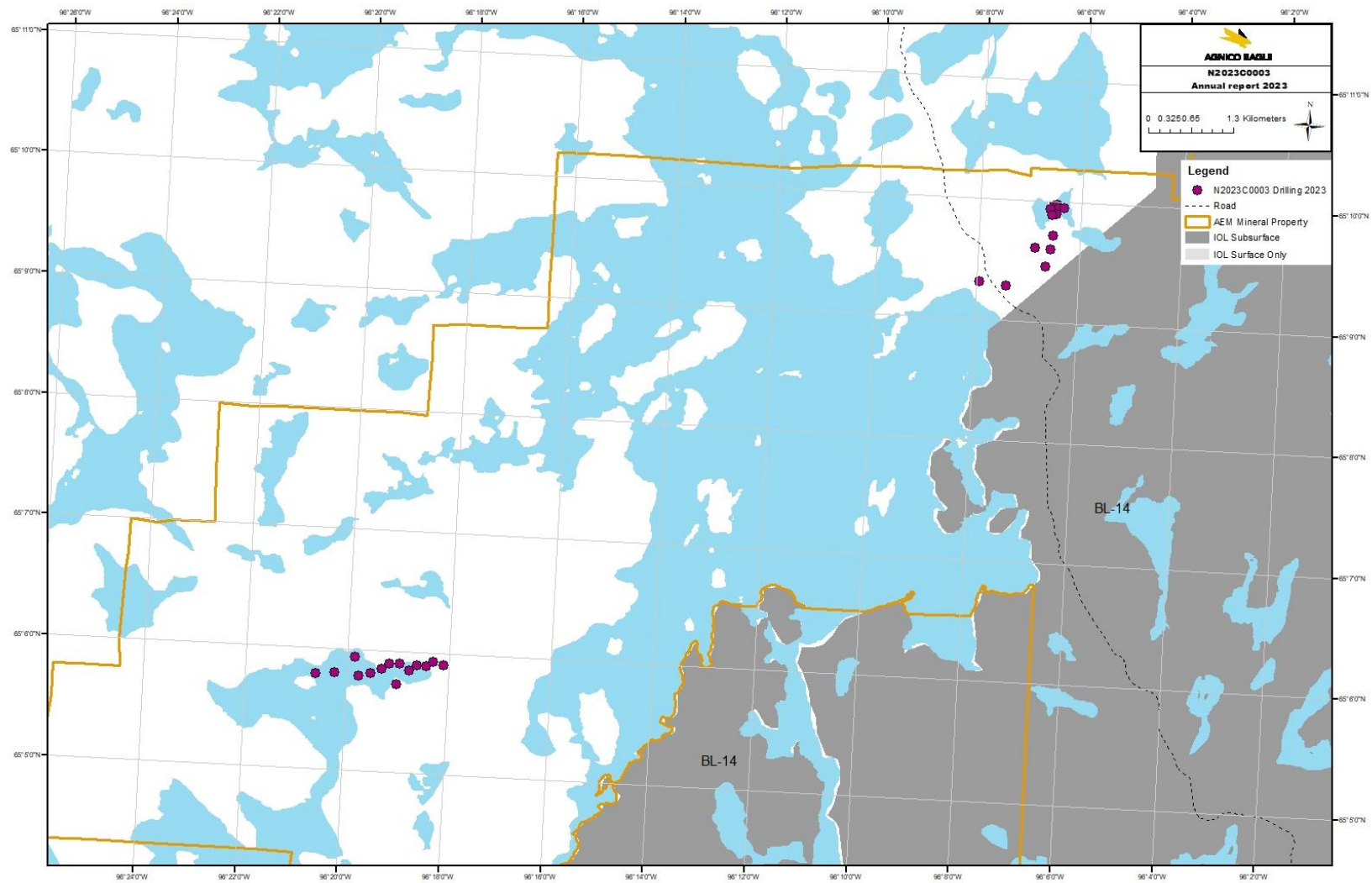
**Annual Report**

1) The Proponent shall submit a comprehensive annual report with copies provided to the Nunavut Impact Review Board and Government of Nunavut – Department of Environment, by March 31st of each year of permitted activities beginning March 31, 2016. The annual report must contain at least the following information:

a) A summary of activities undertaken for the year, including:

- I. a map showing the approximate location of drill sites;
  - *In the area covered by this decision, 28 holes were drilled in 2023. Mineral prospection done on foot with helicopter support was also conducted. The drilling site locations are shown on Figure 1.*

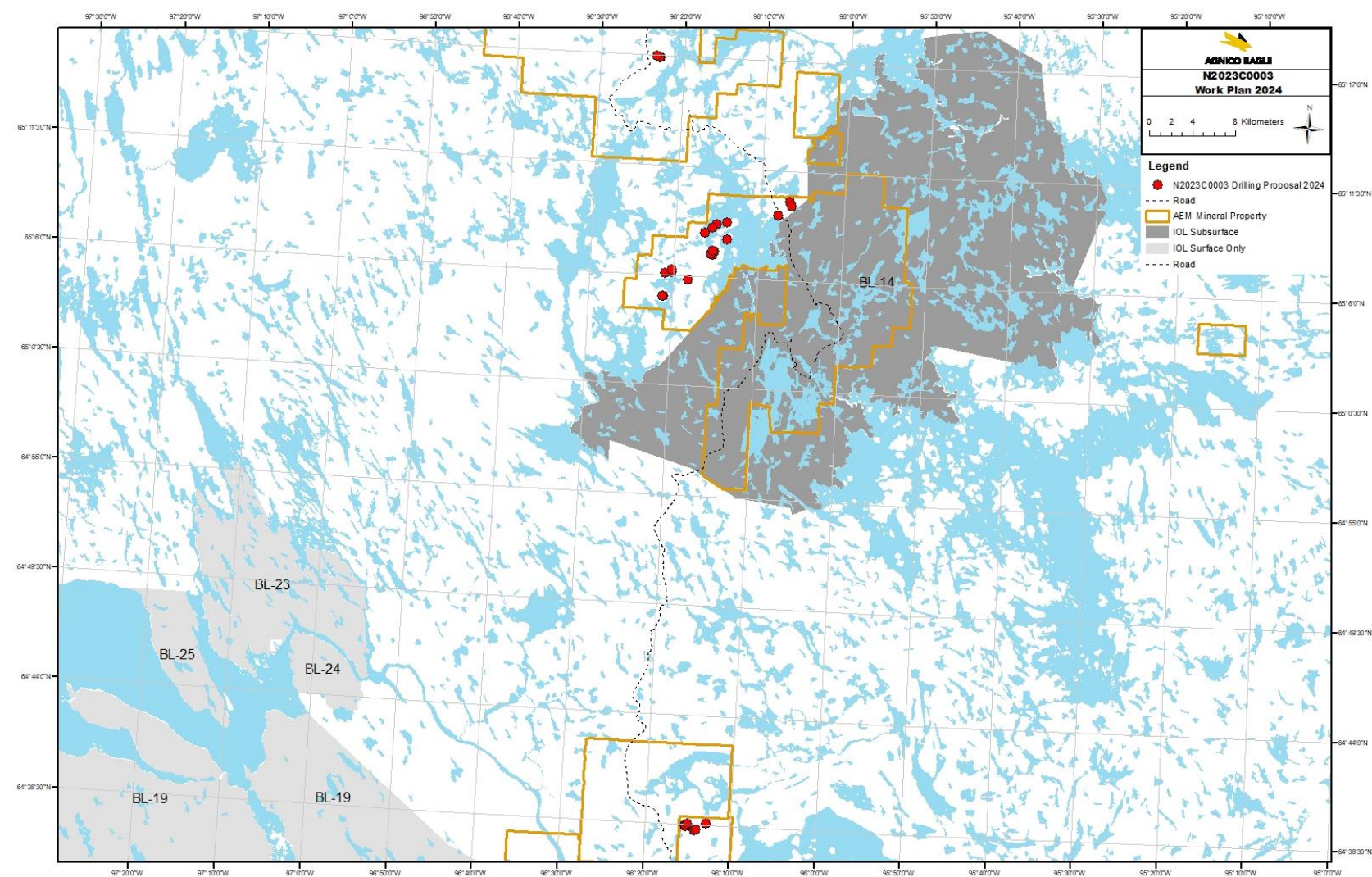
Figure 1, Drilling Locations 2023



- II. a map showing the location of the fuel cache;
- *No fuel cache was installed in 2023 in the area covered by this decision.*
- III. a description of local hires, contracting opportunities and initiatives;
- *The exploration division maintains good relations with local workforce. We hire personnel from different communities around Kivallik to join our team during exploration programs, either going through local companies (for example, Peter Expediting, Arctic-Fuel, Sarliaq Holdings, etc.) or hiring directly with Agnico Eagle through local Labor Pool and Inuit Employment departments. During field work operations, Inuit bear monitors are very often hired, their knowledge, experience and sharing of the life in the tundra brings respect and a different perspective to our work.*
- IV. flight altitudes, frequency of flights and anticipated flight routes;
- *For long-range transportation flights, we ask all pilots to follow a practice that sees the aircraft fly at a minimum of 610 m above ground level. Exceptions may exist during takeoff and landing, low-level ceiling conditions, high winds, or other risks to flight safety.*
  - *Transport between Amaruq and the exploration areas and between Meadowbank and the exploration areas was done daily during the exploration period.*
- b) A summary of the overview assessment conducted of the exploration areas;
- *Archaeologists conducted field visits in the summers from 2016 to 2023 to ensure archaeological site protection during exploration activities. Reports were submitted to the Government of Nunavut by the archaeologists.*
  - *The project geologist or his delegate performed site visits before mobilizing the diamond drill to ensure that no sensitive sites were located in the vicinity of the exploration areas.*
- c) A map with details of the winter travel routes that would be used for equipment transportation;
- *No winter travel routes were used in 2023 in the area covered by this decision.*

- d) A work plan for the following year, including any progressive reclamation work undertaken;
- *A 27-hole drilling campaign is planned in the area covered by this decision in 2024 on Crown Land, under the land use permit N2023C0003 at locations shown on Figure 2. Prospecting, mapping and geophysical surveying could also be conducted on the entire mineral properties covered by this decision. No exploration camp or fuel cache is planned to be installed.*

Figure 2, Drilling proposal 2024



e) A summary of community consultations undertaken throughout the year, providing copy of materials presented to community members, a description of issues and concerns raised, discussions with community members and advice offered to the company as well as any follow-up actions that were required or taken to resolve any concerns expressed about the project proposal;

- *March 2023, meeting with KHTO, presentation and discussion about exploration programs*
- *March and August 2023, meetings with Kivalliq Elders Advisory Committee with discussions about IQ collection, caribou, health, permits, etc.*
- *November 2023, meeting with KHTO, discussion about exploration activities with helicopters*
- *November 2023, meeting with BLHTO, discussions about exploration programs in 2024*

f) A log of instances in which community residents occupy or transit through the project area for the purpose of traditional land use or harvesting. This log should include the location and number of people encountered, activity being undertaken (e.g., berry picking, fishing, hunting, camping, etc.), date and time, and any mitigation measures or adaptive management undertaken to prevent disturbance;

<b>Date</b>	<b>Time</b>	<b>Number of people</b>	<b>Location</b>	<b>Activity being undertaken</b>
2023-03-11	pm	7	Sheba area	Snowmobile
2023-03-31	pm	2	Pipe Dream Lake trail	Snowmobile
2023-04-02	pm	1	Pipe Dream Lake trail	Snowmobile
2023-04-28	pm	1	Pipe Dream Lake trail	Snowmobile

g) A discussion of issues related to wildlife and environmental monitoring, including the number of cease-work orders required as a result of proximity to caribou;

- *No issue related to wildlife and environmental monitoring in the areas covered by this decision during exploration activities.*

h) A brief summary of Wildlife Monitoring and Mitigation Plan (WMMP) results as well as any mitigation actions that were undertaken. In addition, the Proponent shall maintain a record of wildlife observations while operating within the project area and include it as part of the summary report. The summary report based on wildlife observations should include the following:

(1) Locations (i.e., latitude and longitude), species, number of animals, a description of the animal activity, and a description of the gender and age of animals if possible.

*Table 1, Wildlife Monitoring 2023*

Date	Time	Wildlife species	Number	Location
2023-05-09	pm	Track of grizzly	0	Between exploration camp and Pipe Dream Lake
2023-07-05	pm	wolverine	1	Fox lake
2023-08-24	am	Grizzly	1	5 km from Got area 14 km Northwest of Amaruq

(2) Prior to conducting project activities, the Proponent should map the location of any sensitive wildlife sites such as denning sites, calving areas, caribou crossing sites, and raptor nests in the project area, and identify the timing of critical life history events (i.e., calving, mating, denning and nesting).

- *A visual inspection of the working sites and surrounding areas was conducted before exploration activities started to ensure that no sensitive sites were present in the vicinity of the exploration activities.*



(3) Additionally, the Proponent should indicate potential impacts from the project, and ensure that operational activities are managed and modified to avoid impacts on wildlife and sensitive sites.

- *Spill Contingency Plan, Wildlife Protection and Response Plan, archaeological field investigations, pre-drilling field inspection and other good practices are in place to reduce potential impacts of the exploration activities. This also includes respecting protection buffers around sensitive features, having working practices to reduce the risk of spills, procedures in place in case of a spill, procedures during caribou migration, etc.*

i) An analysis of the effectiveness of mitigation measures for wildlife as proposed in the WMMP;

- *No issues related to wildlife occurred during the exploration activities and monitoring of distance with caribou ensured the respect of obligations.*

j) Summary of any heritage sites encountered during the exploration activities, any follow-up action or reporting required as a result and how project activities were modified to mitigate impacts on the heritage sites;

- *The archaeologists found archaeological sites during the field investigations in 2016 to 2023. These sites are described in the reports submitted to the Government of Nunavut by the archaeologists, and protection buffers are respected during exploration activities.*

k) Summary of its knowledge of Inuit land use in/near the project area and explain how project activities were modified to mitigate impacts on Inuit land use;

- *Protection buffers are respected around the archaeological and other known sites to ensure mitigation of impacts on Inuit Land Use. Frequent meetings with the various stakeholders help to mitigate the impacts on Inuit Land Use.*

l) A summary of how the Proponent has complied with conditions contained within this Screening Decision, and all conditions as required by other authorizations associated with the project proposal.

- *Procedures and plans were created to ensure compliance with the conditions associated with this decision and other licenses and permits. The Spill Contingency Plan and the Wildlife Protection and Response Plan describe mitigation measures applied in certain defined situations to ensure prompt actions. Annual reports including details on Agnico Eagle's compliance with*

*obligations are submitted to regulators, including Nunavut Water Board, Crown-Indigenous Relations and Northern Affairs Canada and Kivalliq Inuit Association. Compliance inspections by the Kivalliq Inuit Association and by CIRNAC are conducted regularly in the areas where exploration activities are conducted.*