



Emulsion Plant Pad - Photo 16: Emulsion Plant Pad - Overview, looking southwest.



Emulsion Plant Pad - Photo 17: Emulsion Storage Pad- Overview, looking north.



Emulsion Plant Pad - Photo 18: Emulsion Storage Pad - Overview, looking north.



Landfarm - Photo 19: Landfarm - Overview of landfarm, looking northwest



Landfarm - Photo 20: Landfarm - Contaminated soil -1



Landfarm - Photo 21: Landfarm - Contaminated soil -2



Landfarm - Photo 22: Landfarm - water collection pond and water ponding



Industrial Fuel Tanks -Photo 23:

Industrial Fuel Tanks - Overview, looking northwest.



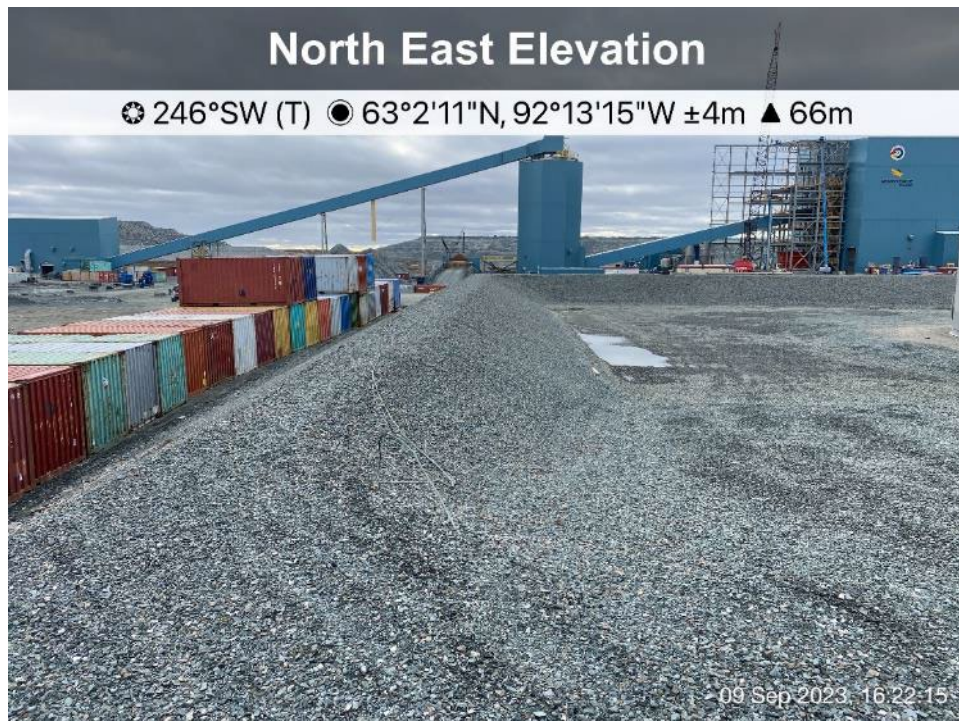
Industrial Fuel Tanks -Photo 24:

Industrial Fuel Tanks - north side berm, looking southwest.



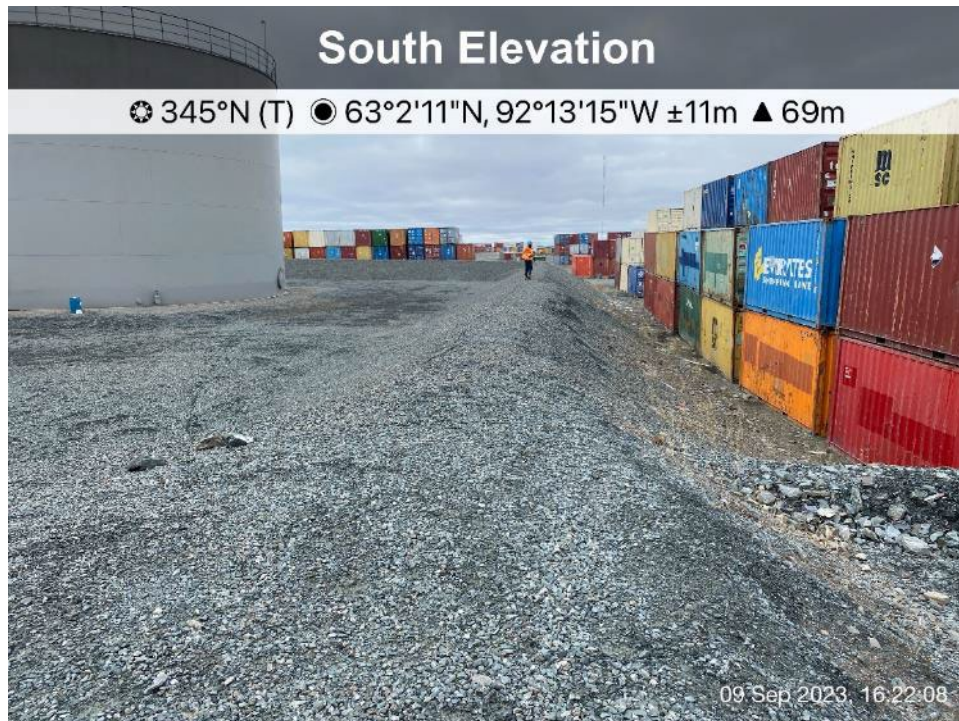
Industrial Fuel Tanks -Photo 25:

Industrial Fuel Tanks - west side berm, looking southwest.



Industrial Fuel Tanks -Photo 26:

Industrial Fuel Tanks - south side berm, looking southwest.



Industrial Fuel Tanks -Photo 27:

Industrial Fuel Tanks - east side berm, looking north.



Portal 1 - Photo 28: Portal 1 – Overview.

Portal 2 - Photo 29 Portal 2 – Overview.





3M Fuel Tanks - Photo 30: 3M Fuel Tanks - Overview, looking north.

APPENDIX Q

EXPLORATION CAMP



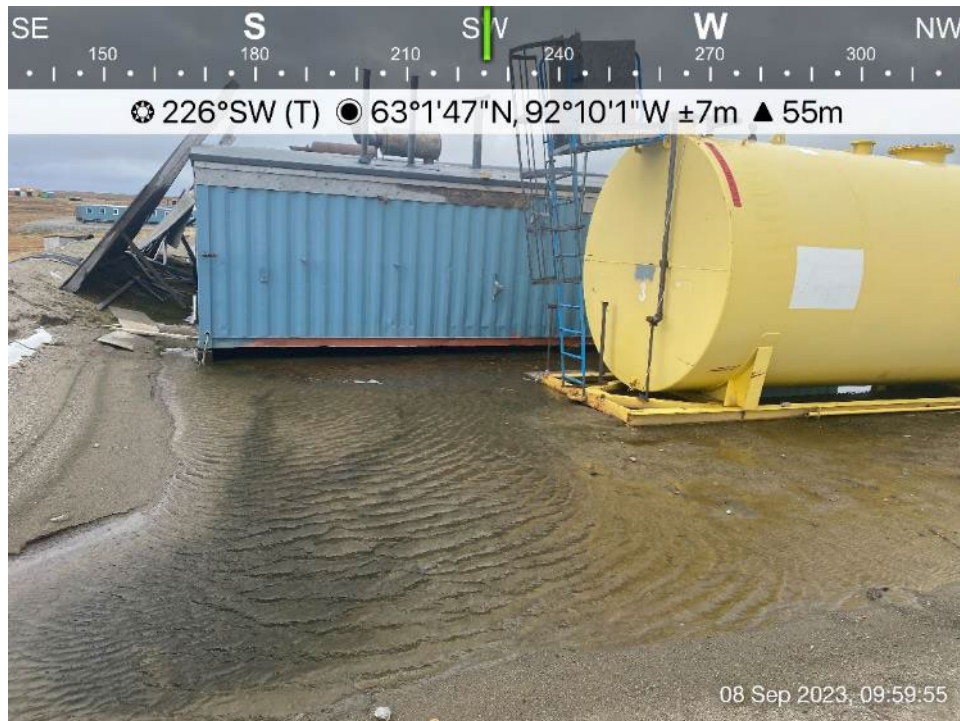
Exploration Camp - Photo 1: Exploration Camp - Overview, looking southwest.



Exploration Camp - Photo 2: Exploration Camp - Fuel storage, looking southwest.



Exploration Camp - Photo 3: Exploration Camp - Fuel storage, looking northeast.



Exploration Camp - Photo 4: Exploration Camp - Fuel storage, looking southwest.



Exploration Camp - Photo 5: Exploration Camp - Fuel storage, looking north.



Exploration Camp - Photo 6: Exploration Camp - freshwater intake pump house, looking west.



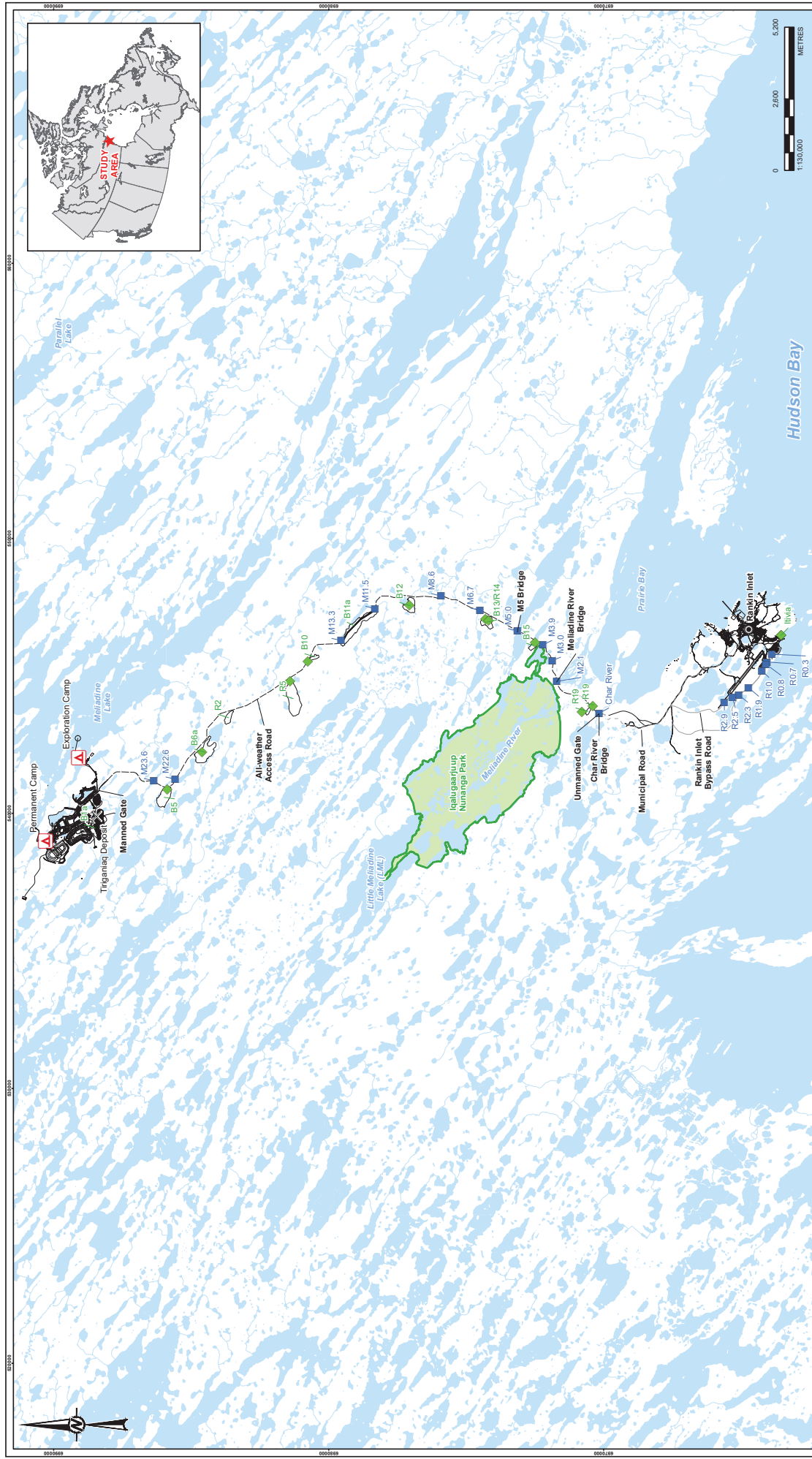
Exploration Camp - Photo 7: Exploration Camp - diffuer access road, looking northwest.










Exploration Camp - Photo 8: Exploration Camp - diffuer pipeline, looking north.

APPENDIX R

ALL-WEATHER ACCESS ROAD (AWAR)



<p>LEGEND</p> <p> CAMP</p> <p> PROPOSED MINE SITE</p> <p> QUARRY/BORROW PIT LOCATION</p> <p> WATERCOURSE CROSSING</p> <p> ALL-WEATHER ACCESS ROAD (AWAR)</p> <p> ROAD - EXISTING</p> <p> WATERBODY</p> <p> TERRITORIAL PARK</p>		<p>REFERENCE(S)</p> <p>1. DATA OBTAINED FROM CONGO EAGLE MINES LIMITED.</p> <p>2. DATUM: UTM ZONE 18</p>	<p>CLIENT</p> <p>AGNICO EAGLE MINES LTD.</p>	<p>CONSULTANT</p> <p></p>	<p>YYYY-MM-DD</p> <p>DESIGNED FE</p> <p>PREPARED CDB</p> <p>REVIEWED FE</p> <p>APPROVED ACI</p>	<p>2019-02-14</p> <p>FE</p> <p>CDB</p> <p>FE</p> <p>ACI</p>	<p>PROJECT</p> <p>MELIADINE GOLD PROJECT</p>	<p>TITLE</p> <p>MELIADINE ALL WEATHER ACCESS ROAD WITH QUARRIES AND WATERCOURSE CROSSINGS</p>	<p>PROJECT NO.</p> <p>18105719</p>	<p>CONTROL</p> <p>3000/002</p>	<p>REV</p> <p>0</p>	<p>FIGURE</p> <p>5</p>
--	--	---	--	---	---	---	--	---	---	---------------------------------------	----------------------------	-------------------------------



AWAR Road/Culvert - Photo 1: Culvert KM 5.5 - inlet.



AWAR Road/Culvert - Photo 2: Culvert KM 5.5 - outlet.



AWAR Road/Culvert - Photo 3: Char River Bridge KM 6.0.



AWAR Road/Culvert - Photo 4: Char River Bridge KM 6.1 - north abutment.



AWAR Road/Culvert - Photo 5: Char River Bridge KM 6.1 - south abutment.



AWAR Road/Culvert - Photo 6: Culvert KM 6.2 - inlet.



AWAR Road/Culvert - Photo 7: Culvert KM 6.2 - inlet.



AWAR Road/Culvert - Photo 8: Culvert KM 6.2 - outlet.



AWAR Road/Culvert - Photo 9: Culvert KM 7.0 - inlet.



AWAR Road/Culvert - Photo 10: Culvert KM 7.0 - inlet.



AWAR Road/Culvert - Photo 11: Culvert KM 7.0 - outlet.



AWAR Road/Culvert - Photo 12: Culvert KM 7.1 – inlet.



AWAR Road/Culvert - Photo 13: Culvert KM 7.1 – inlet.



AWAR Road/Culvert - Photo 14: Culvert KM 7.1 – outlet.



AWAR Road/Culvert - Photo 15: Culvert KM 7.4 – inlet.



AWAR Road/Culvert - Photo 16: Culvert KM 7.4 – outlet.



AWAR Road/Culvert - Photo 17: Meliadine River Bridge KM 8.0.



AWAR Road/Culvert - Photo 18: Meliadine River Bridge KM 8.0.



AWAR Road/Culvert - Photo 19: Meliadine River Bridge KM 8.0- east abutment.



AWAR Road/Culvert - Photo 20: Meliadine River Bridge KM 8.0- west abutment.



AWAR Road/Culvert - Photo 21: KM 8.8 - No culvert installed, water overflows the road during freshet.



AWAR Road/Culvert - Photo 22: Culvert KM 9.1 – inlet.



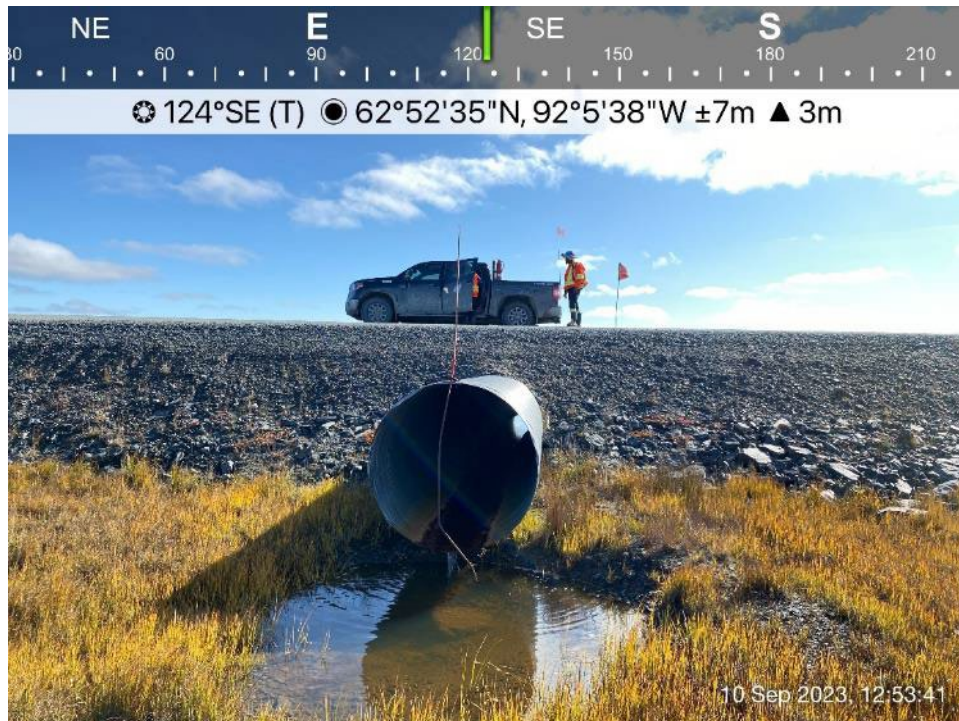
AWAR Road/Culvert - Photo 23: Culvert KM 9.1 – inlet.



AWAR Road/Culvert - Photo 24: Culvert KM 9.1 – outlet.



AWAR Road/Culvert - Photo 25: Culvert KM 9.5 – inlet.



AWAR Road/Culvert - Photo 26: Culvert KM 9.5 – outlet.



AWAR Road/Culvert - Photo 27: M-5 Bridge KM 10.5.



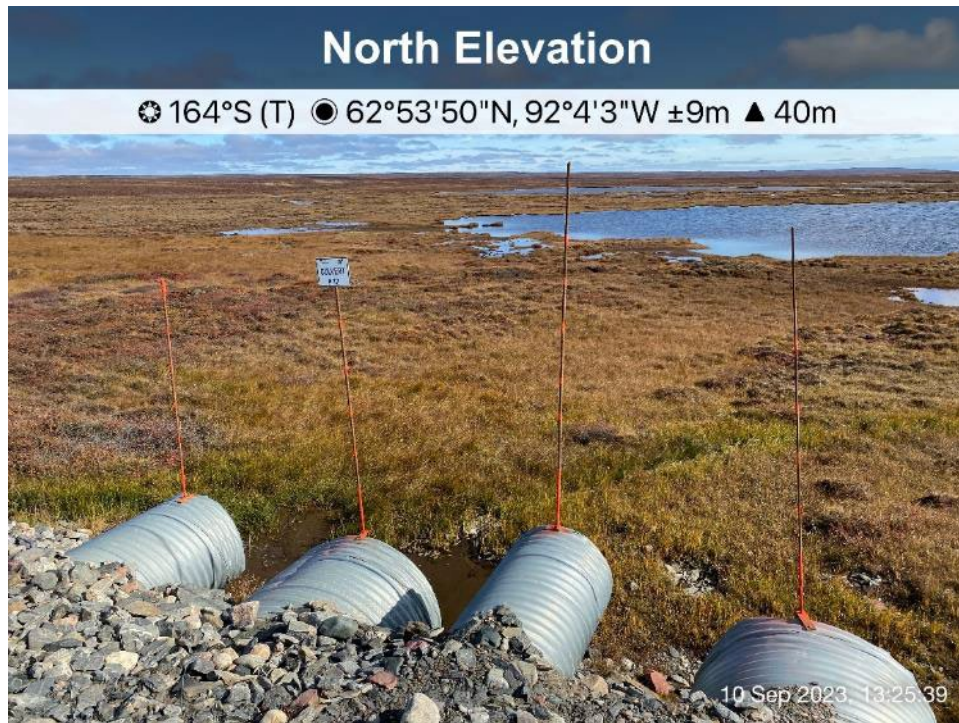
AWAR Road/Culvert - Photo 28: M-5 Bridge KM 10.5.



AWAR Road/Culvert - Photo 29: M-5 Bridge KM 10.5- south abutment.



AWAR Road/Culvert - Photo 30: M-5 Bridge KM 10.5- north abutment.



AWAR Road/Culvert - Photo 31: Culvert KM 12.1 – inlet.



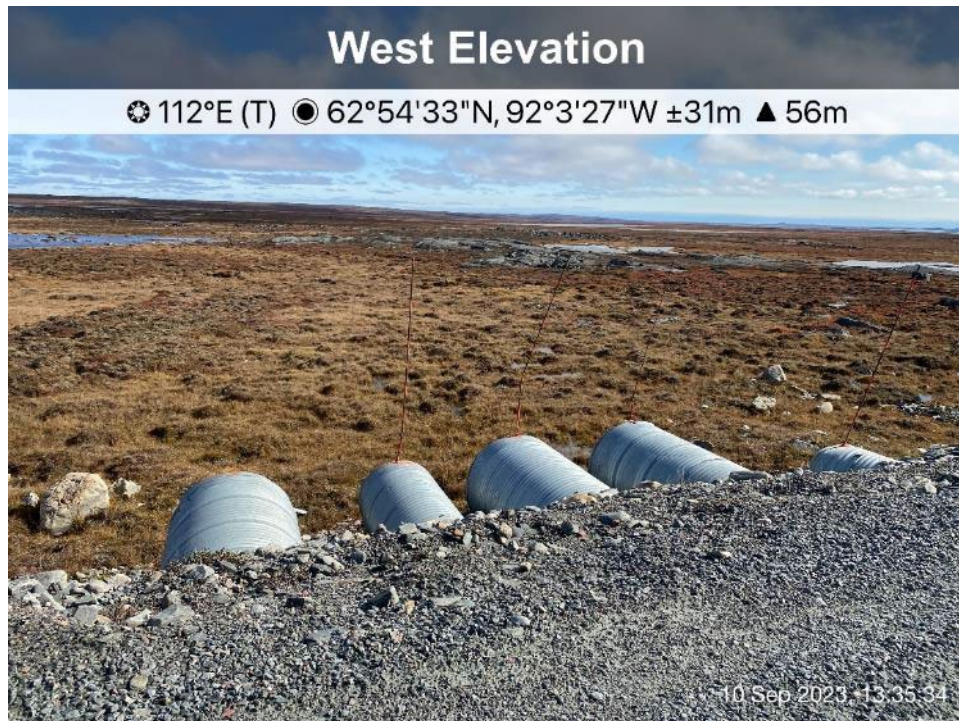
AWAR Road/Culvert - Photo 32: Culvert KM 12.1 – outlet.



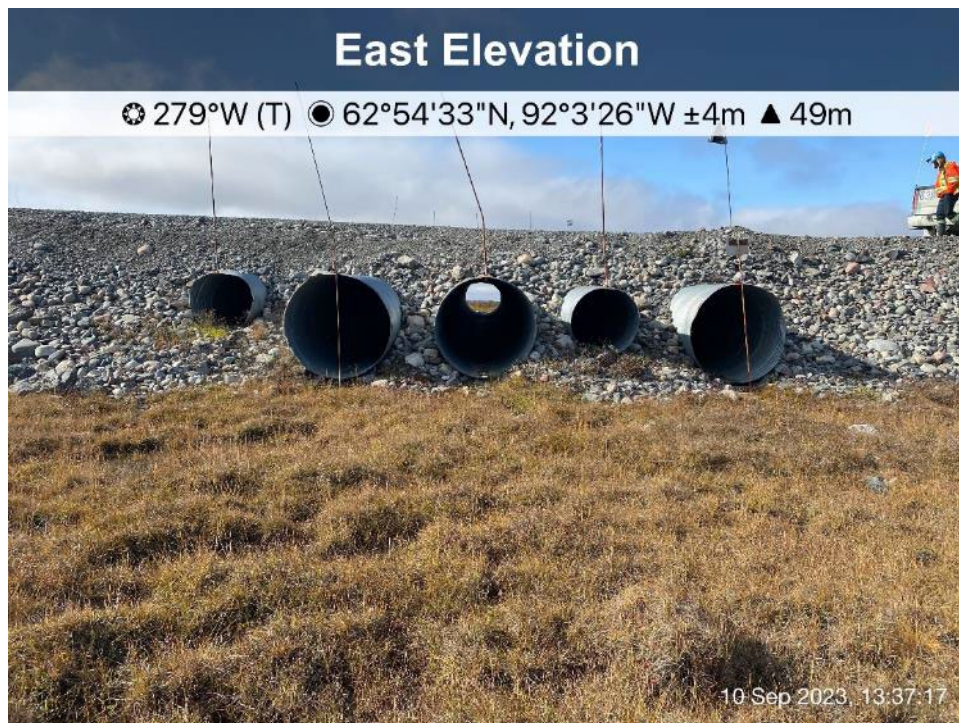
AWAR Road/Culvert - Photo 33: KM 12.6 - No culvert installed, poor drainage condition, no sign of water flow.



AWAR Road/Culvert - Photo 34: KM 12.6 - No culvert installed, poor drainage condition, no sign of water flow.



AWAR Road/Culvert - Photo 35: Culvert KM 13.5 – inlet.



AWAR Road/Culvert - Photo 36: Culvert KM 13.5 – inlet.



AWAR Road/Culvert - Photo 37: Culvert KM 13.5 – outlet.



AWAR Road/Culvert - Photo 38: Culvert KM 14.7 - inlet - HDPE corrugated culvert.



AWAR Road/Culvert - Photo 39: Culvert KM 14.7 - outlet- HDPE corrugated culvert.



AWAR Road/Culvert - Photo 40: Culvert KM 16.3 – inlet.



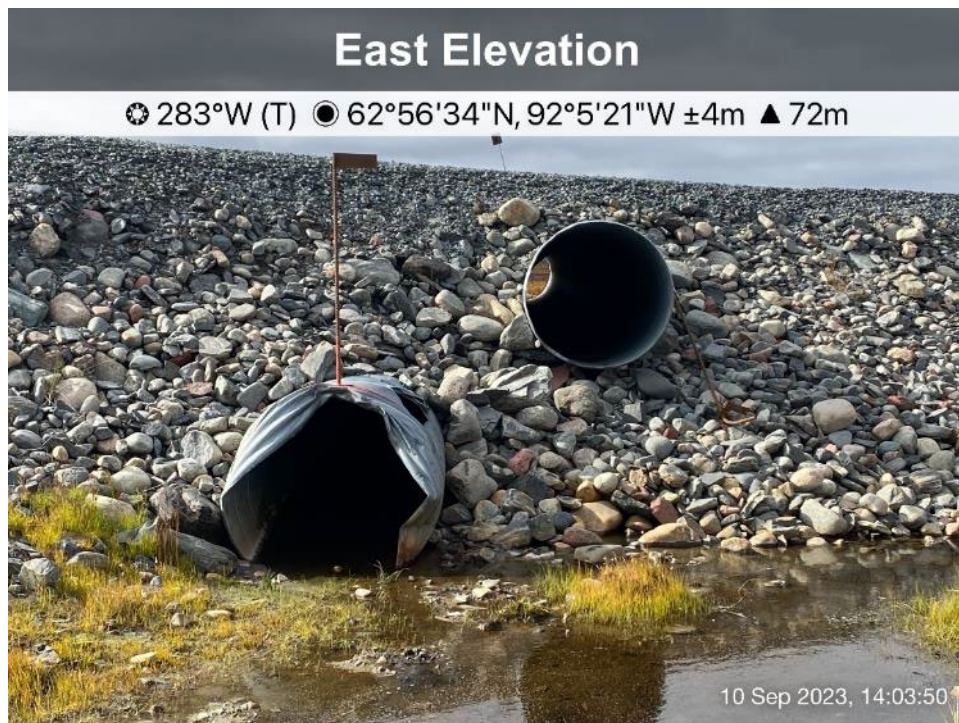
AWAR Road/Culvert - Photo 41: Culvert KM 16.3 – inlet.



AWAR Road/Culvert - Photo 42: Culvert KM 16.3 – outlet.



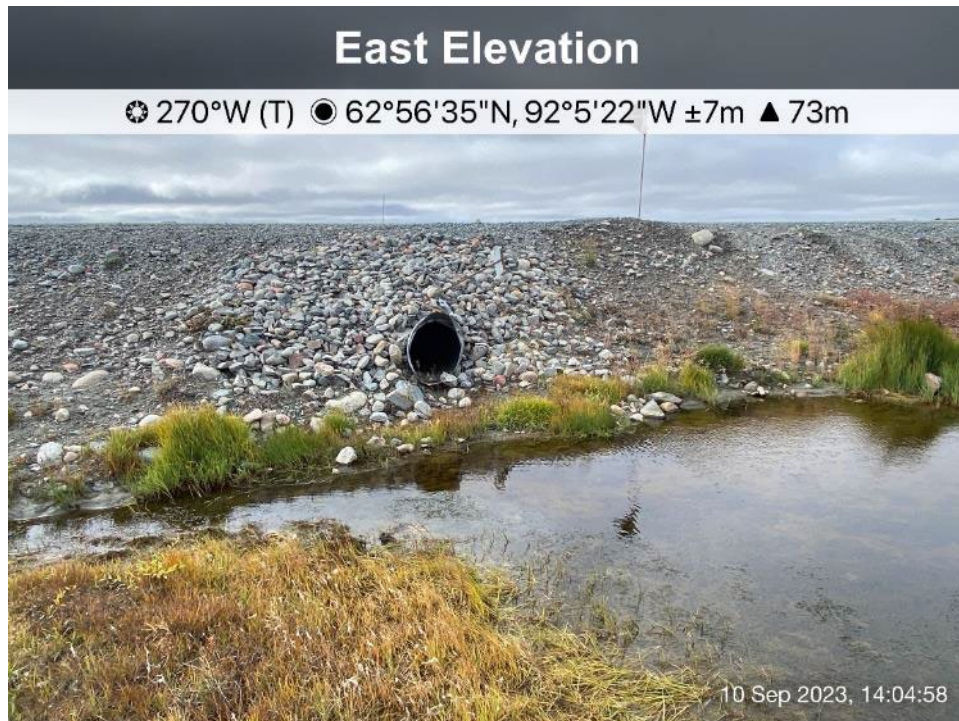
AWAR Road/Culvert - Photo 43: Culvert KM 18.1 – inlet.



AWAR Road/Culvert - Photo 44: Culvert KM 18.1 – inlet.



AWAR Road/Culvert - Photo 45: Culvert KM 18.1- outlet.



AWAR Road/Culvert - Photo 46: Culvert KM 18.15 – inlet.



AWAR Road/Culvert - Photo 47: Culvert KM 18.15 – outlet.



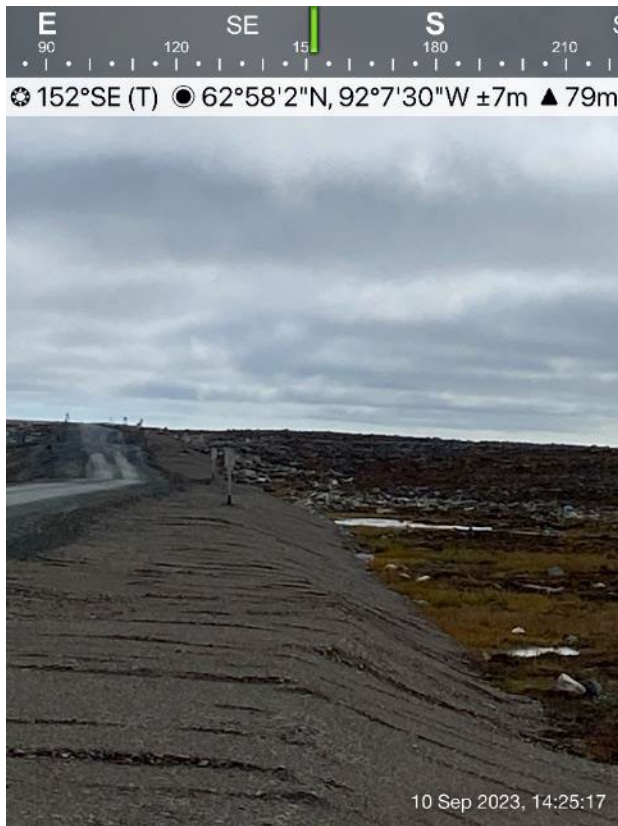
AWAR Road/Culvert - Photo 48: KM 19 - No culvert installed, ponded water upstream, no sign of overflow.



AWAR Road/Culvert - Photo 49: KM 19 - No culvert installed, ponded water upstream, no sign of overflow.

AWAR Road/Culvert - Photo 50: KM 21.0 to 21.5 - No culvert installed, ponded water upstream.





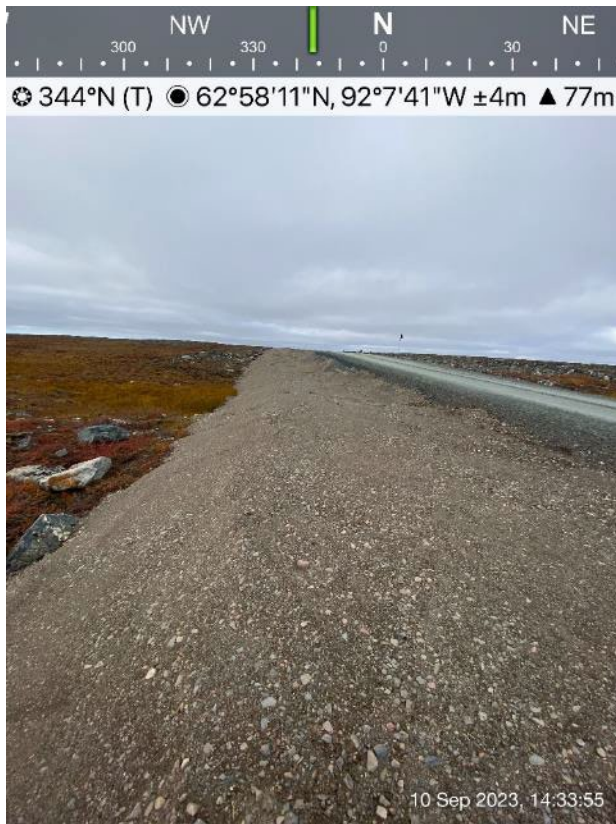
**AWAR Road/Culvert
- Photo 51:**

KM 21.7 - Culverts were buried during the waterline construction, ponded water observed, poor drainage

**AWAR Road/Culvert
- Photo 52:**

Culvert KM 22.3 - steel pipe as culvert, inlet is above water level.





**AWAR Road/Culvert
- Photo 53:**

Culvert KM 22.3 - steel pipe as culvert, outlet was buried during the waterline project construction.



AWAR Road/Culvert - Photo 54:

KM 22.7 to 23.0 - No culvert installed, ponded water upstream.



AWAR Road/Culvert - Photo 55: Culvert KM 25.8 - HDPE corrugated culvert – inlet.



AWAR Road/Culvert - Photo 56: Culvert KM 25.8 - HDPE corrugated culvert – outlet.



AWAR Road/Culvert - Photo 57: Culvert KM 25.8 - HDPE corrugated culvert - sign of deformation observed.



AWAR Road/Culvert - Photo 58: Culvert KM 26.2 - steel pipe as culvert, inlet.



AWAR Road/Culvert - Photo 59: Culvert KM 26.2 - steel pipe as culvert, outlet.



AWAR Road/Culvert - Photo 60: Culvert KM 26.5 – inlet.



AWAR Road/Culvert - Photo 61: Culvert KM 26.5 – inlet.



AWAR Road/Culvert - Photo 62: Culvert KM 26.5 – outlet.



AWAR Road/Culvert - Photo 63: Culvert KM 26.8 - steel pipe as culvert, inlet is above water level.



AWAR Road/Culvert - Photo 64: Culvert KM 26.8 - steel pipe as culvert, outlet was buried during the waterline project construction.



AWAR Road/Culvert - Photo 65: Culvert KM 27.1 – inlet.



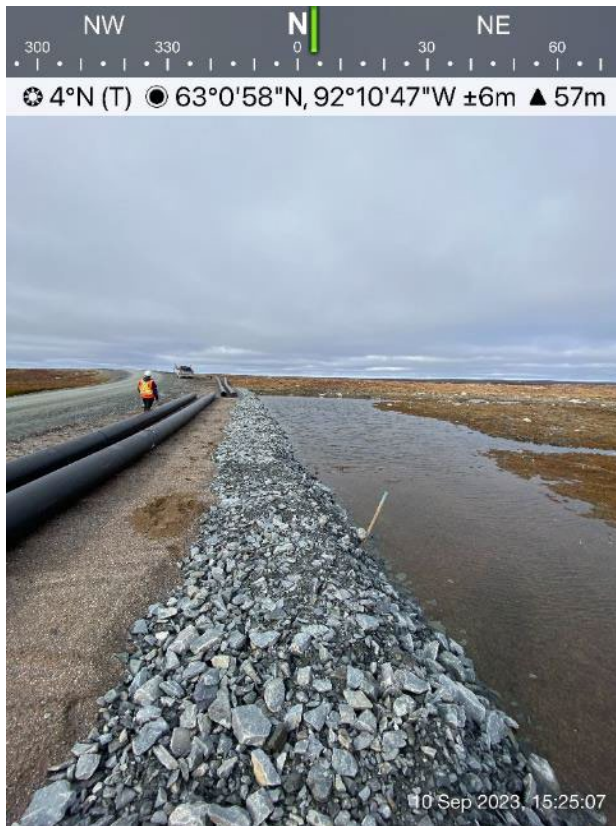
AWAR Road/Culvert - Photo 66: Culvert KM 27.1 – inlet.



AWAR Road/Culvert - Photo 67: Culvert KM 27.1 – outlet.



AWAR Road/Culvert - Photo 68: KM 28.7 - No culvert installed, ponded water upstream.



**AWAR Road/Culvert
- Photo 69:**

KM 29.1 - No culvert installed,
ponded water upstream.

APPENDIX S

ITIVIA FUEL STORAGE AND BYPASS ROAD





Itivia Bypass Road/Culvert - Photo 1: Culvert C01 Inlet.



Itivia Bypass Road/Culvert - Photo 2: Culvert C01 Outlet.



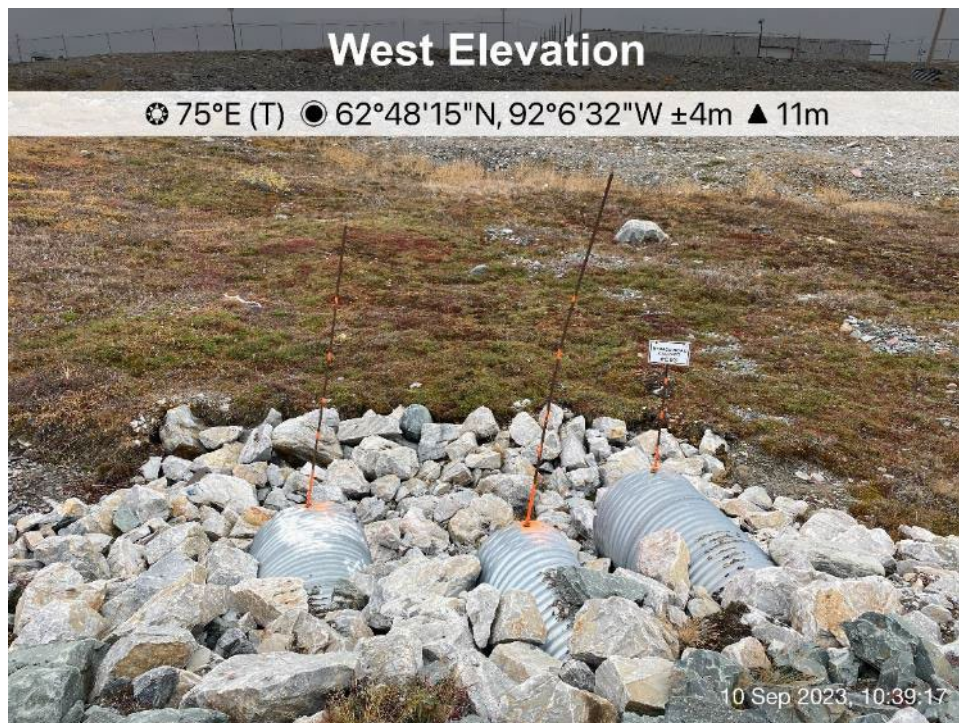
Itivia Bypass Road/Culvert Culvert C02 Inlet.
- Photo 3:



Itivia Bypass Road/Culvert - Photo 4: Culvert C02 Inlet.



Itivia Bypass Road/Culvert - Photo 5: Culvert C02 outlet.



Itivia Bypass Road/Culvert - Photo 6: Culvert C03 inlet.



Itivia Bypass Road/Culvert - Photo 7: Culvert C03 inlet.



Itivia Bypass Road/Culvert - Photo 8: Culvert C03 outlet.



Itivia Bypass Road/Culvert - Photo 9: Culvert C04 inlet.



Itivia Bypass Road/Culvert - Photo 10: Culvert C04 inlet.



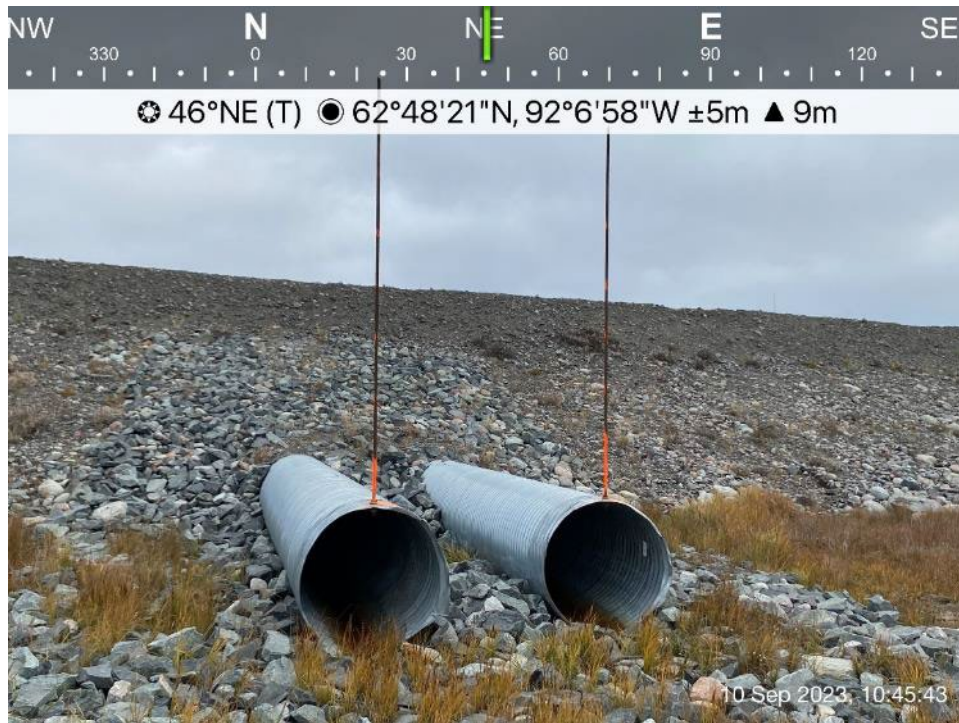
Itivia Bypass Road/Culvert - Photo 11: Culvert C04 outlet.



Itivia Bypass Road/Culvert - Photo 12: Culvert C05 inlet.



Itivia Bypass Road/Culvert - Photo 13: Culvert C05 inlet.



Itivia Bypass Road/Culvert - Photo 14: Culvert C05 outlet.



Itivia Bypass Road/Culvert - Photo 15: Culvert C06 inlet.



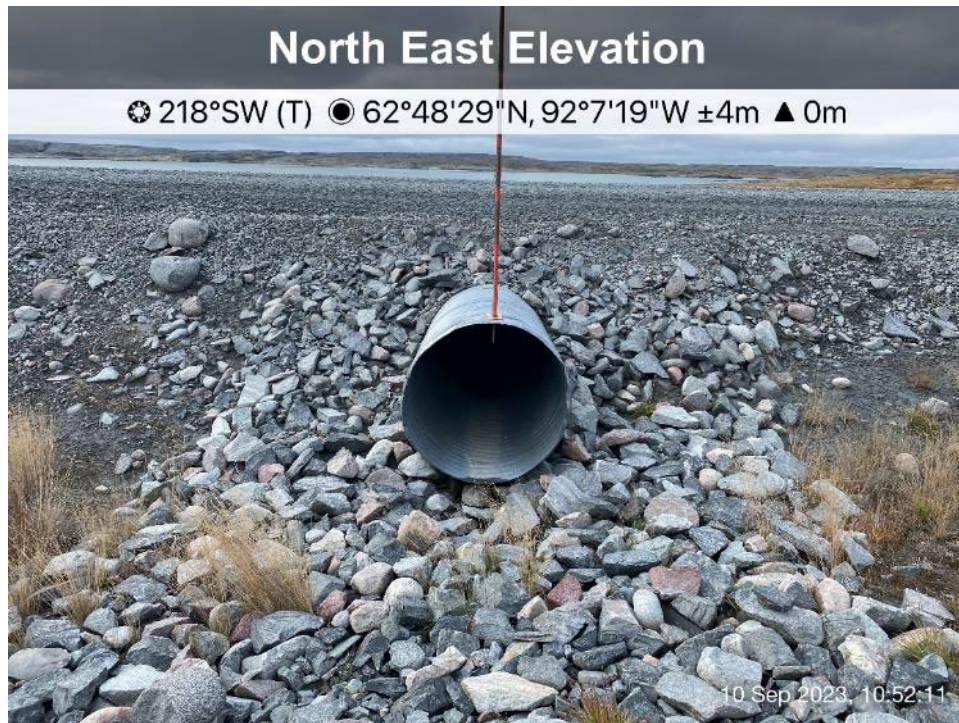
Itivia Bypass Road/Culvert - Photo 16: Culvert C06 inlet.



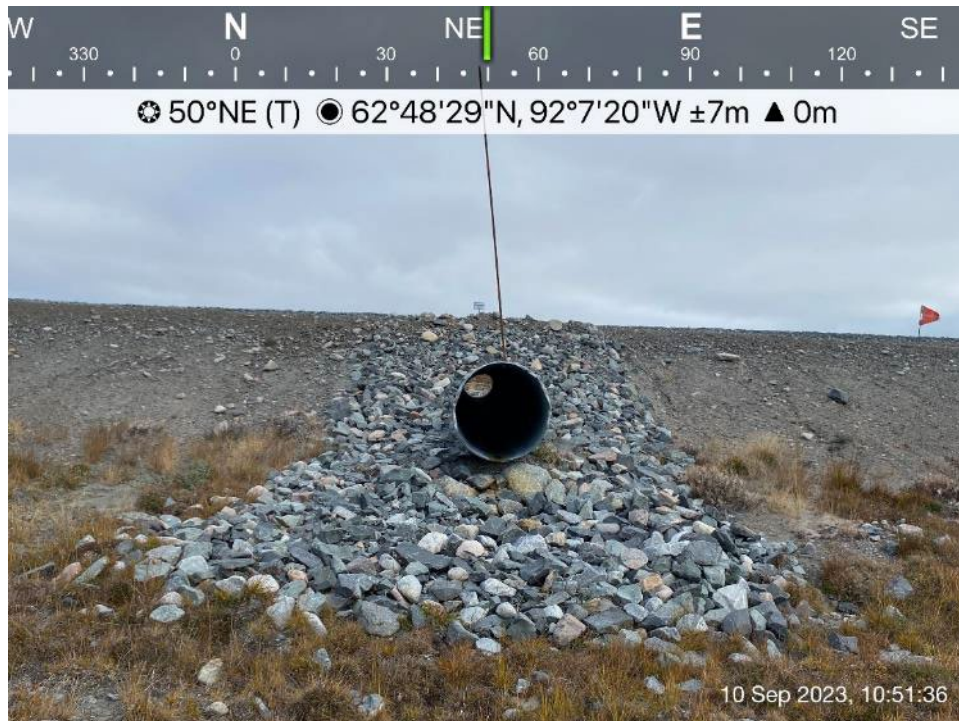
Itivia Bypass Road/Culvert - Photo 17: Culvert C06 outlet.



Itivia Bypass Road/Culvert - Photo 18: Culvert C07 inlet.



Itivia Bypass Road/Culvert - Photo 19: Culvert C07 inlet.



Itivia Bypass Road/Culvert - Photo 20: Culvert C07 outlet.



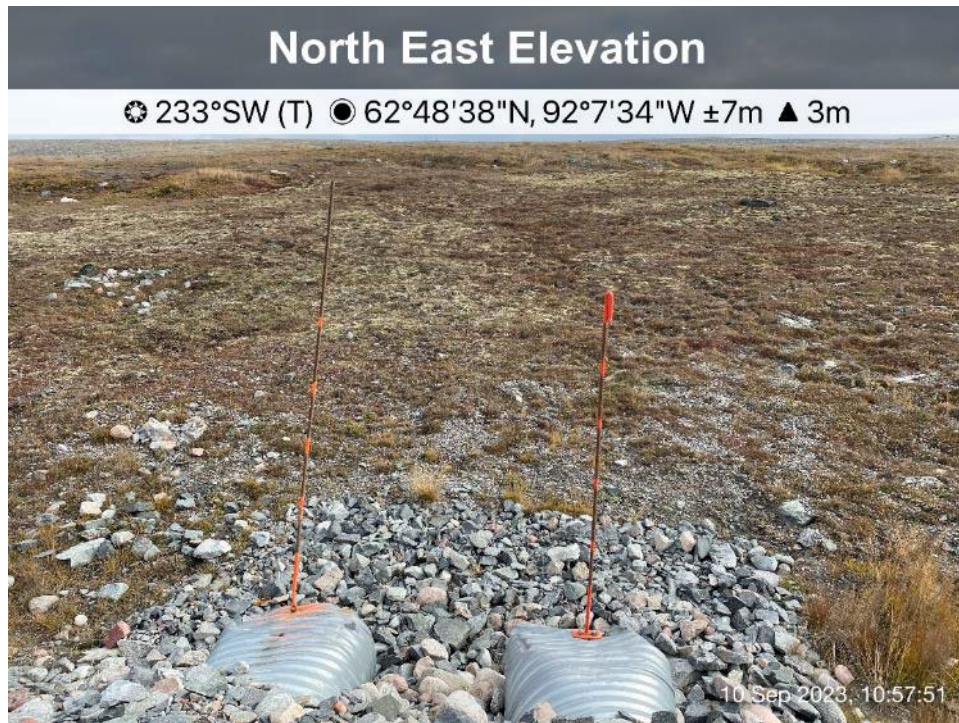
Itivia Bypass Road/Culvert - Photo 21: Culvert C08 inlet.



Itivia Bypass Road/Culvert - Photo 22: Culvert C08 inlet.



Itivia Bypass Road/Culvert - Photo 23: Culvert C08 outlet.



Itivia Bypass Road/Culvert - Photo 24: Culvert C09 inlet.



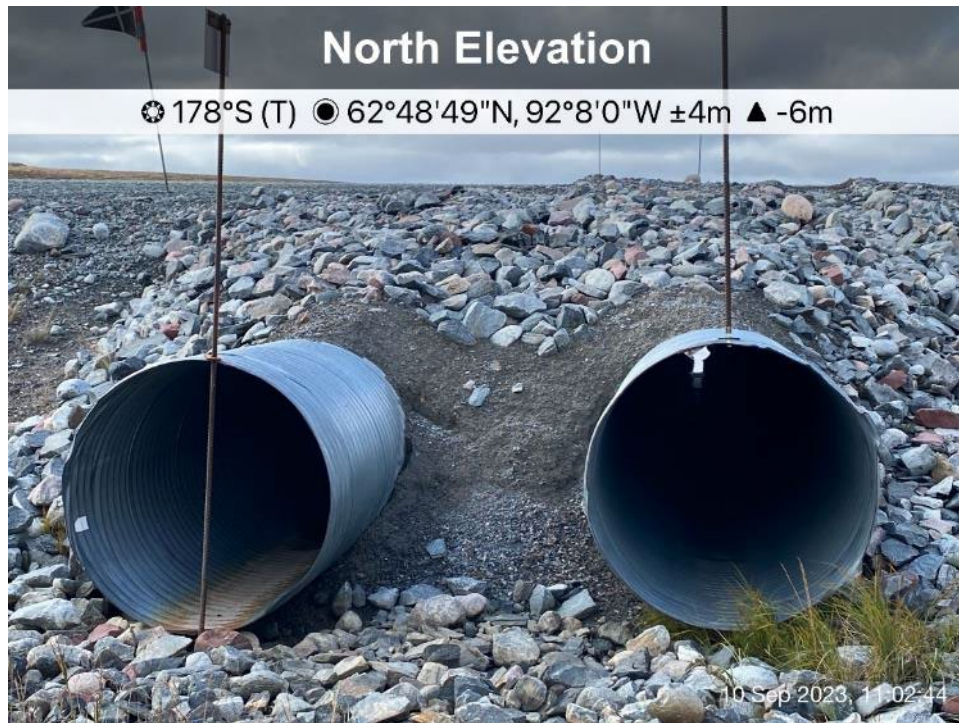
Itivia Bypass Road/Culvert - Photo 25: Culvert C09 inlet.



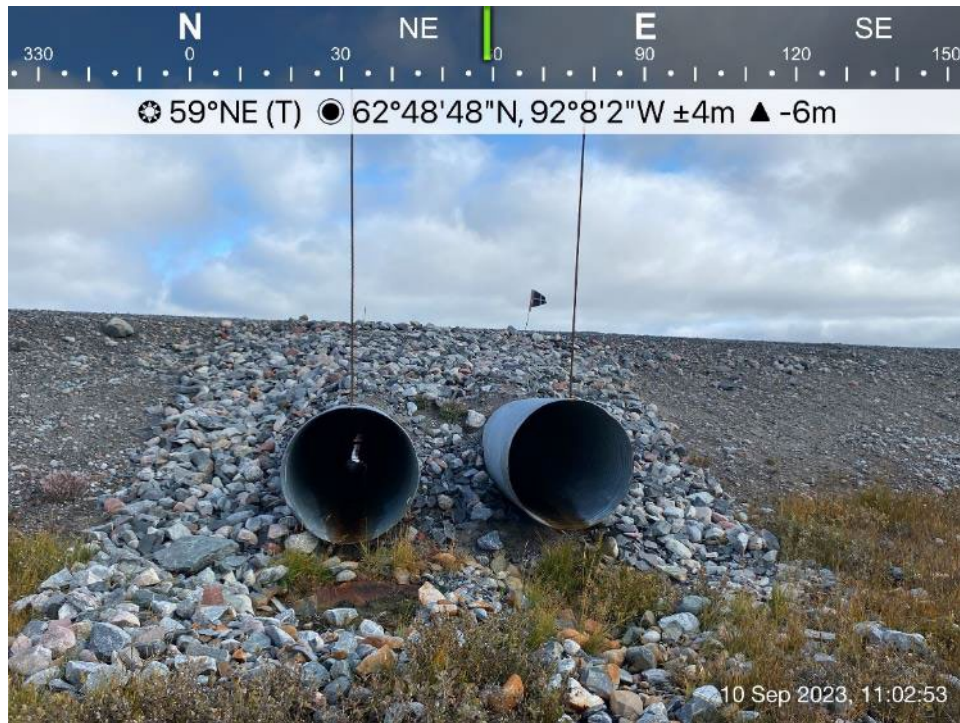
Itivia Bypass Road/Culvert - Photo 26: Culvert C09 outlet.



Itivia Bypass Road/Culvert - Photo 27: Culvert C10 inlet.



Itivia Bypass Road/Culvert - Photo 28: Culvert C10 inlet.



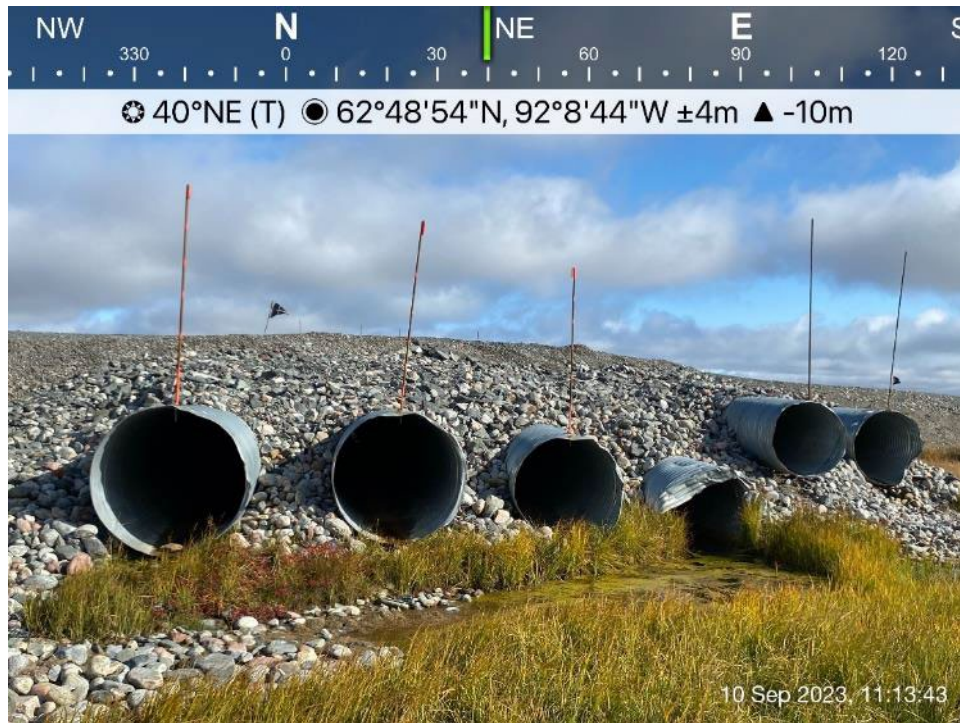
Itivia Bypass Road/Culvert - Photo 29: Culvert C10 outlet.



Itivia Bypass Road/Culvert - Photo 30: Culvert C11 inlet.



Itivia Bypass Road/Culvert - Photo 31: Culvert C11 inlet.



Itivia Bypass Road/Culvert - Photo 32: Culvert C11 outlet.



Itivia Bypass Road/Culvert - Photo 33: Culvert C12 inlet.



Itivia Bypass Road/Culvert - Photo 34: Culvert C12 inlet.



Itivia Bypass Road/Culvert - Photo 35: Culvert C12 outlet.



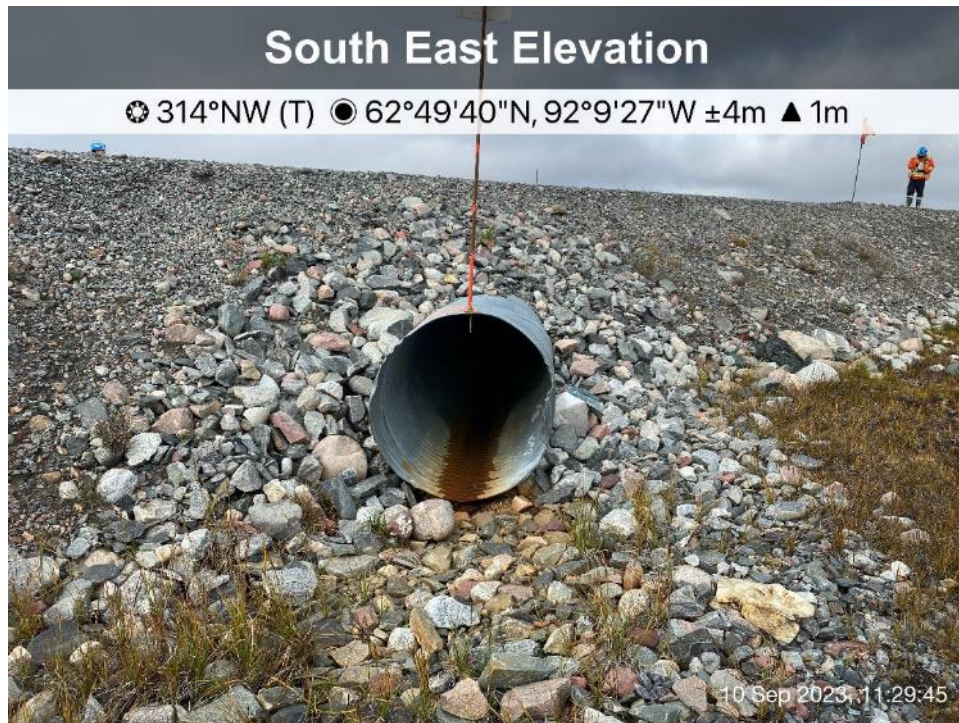
Itivia Bypass Road/Culvert - Photo 36: Culvert C13 inlet.



Itivia Bypass Road/Culvert - Photo 37: Culvert C13 outlet.

Itivia Bypass Road/Culvert - Photo 38: Culvert C14 inlet.





Itivia Bypass Road/Culvert - Photo 39: Culvert C14 inlet.

Itivia Bypass Road/Culvert - Photo 40: Culvert C14 outlet.





Itivia Bypass Road/Culvert Culvert C15 inlet.
- Photo 41:



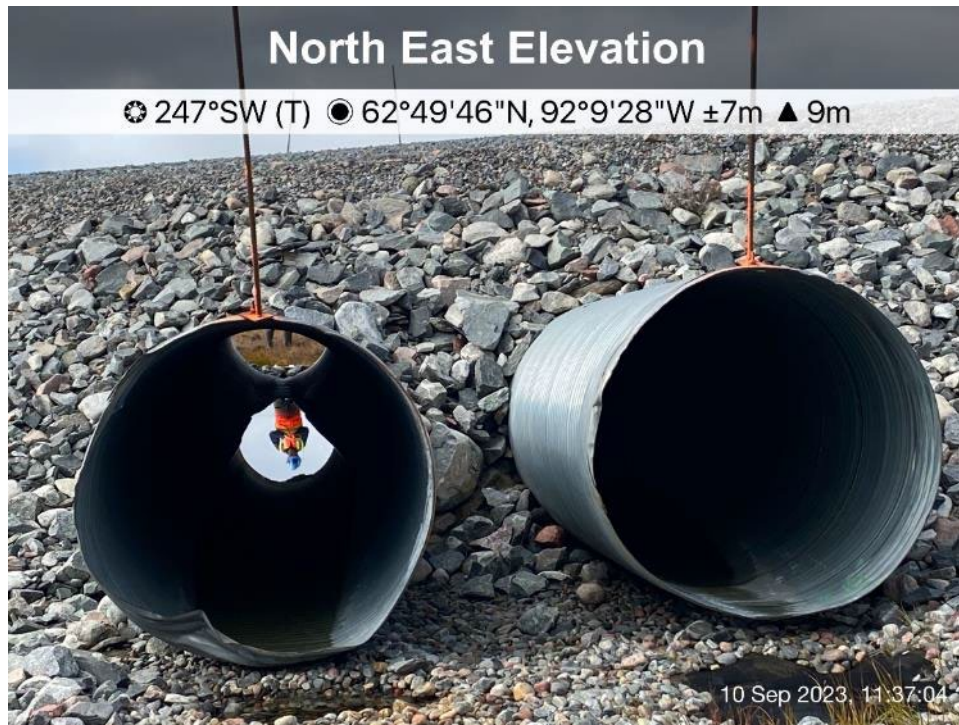
Itivia Bypass Road/Culvert - Photo 42: Culvert C15 inlet.



Itivia Bypass Road/Culvert - Photo 43: Culvert C15 outlet.



Itivia Bypass Road/Culvert - Photo 44: Culvert C16 inlet.



Itivia Bypass Road/Culvert - Photo 45: Culvert C16 inlet.



Itivia Bypass Road/Culvert - Photo 46: Culvert C16 outlet.

West Elevation

☀ 101°E (T) ● 62°49'47"N, 92°9'29"W ±4m ▲ 4m



Itivia Bypass Road/Culvert - Photo 47: Culvert C17 inlet.

South Elevation

☀ 9°N (T) ● 62°49'47"N, 92°9'29"W ±8m ▲ 9m



Itivia Bypass Road/Culvert - Photo 48: Culvert C17 inlet.