



NIRB Uuktuutinga Ihivriughikhamut #125937

Bedrock Mapping at Uvauk Bay

Uuktuutinga Qanurittuq: New

Havaap Qanurittunia: Scientific Research

Uuktuutinga Ublua: 4/11/2024 11:21:37 AM

Period of operation: from to

Piumayaat Angirutinga: from to

Havauhikhaq Ikayuqtinga: Joshua Laughton
Geological Survey of Canada
601 Booth Street
Ottawa Ontario K1A0E8
Canada
Hivayautit Nampanga:: 5195204931, Kayumiktukkut Nampanga:: 5195204931

Tukihianaqṭunik havaariyauyumayumik uqauhiuyun

Uiviititut: N/A

[illegible]

Inuinnaqtun: N/A

Personnel

Personnel on site: 6

Days on site: 14

Total Person days: 84

Operations Phase: from 2024-08-01 to 2024-08-14

Hulilukaarutit

Inigiya	Hulilukaarut Qanurittuq	Nunannga Qanurittaakhaanik	Initurlinga qanuritpa	Initurlinga utuqqarnitat unaluuniit Ingilraaqnitat Uyarannguqtut akhuurninnga	Qanitqiyauyuq qanitqiamut nunallaat kitulluuniit ahiruqtaliyainnit nuna
mapping area	Scientific/International Polar Year Research	Inuit Owned Surface Lands	According to western science, this area, which has only been briefly studied in the past, could provide critical information involving the initial assembly of North American continents.	Any crew member who discovers an archaeological object or a fossil will be instructed not touch or remove it from the location where it was found and report the discovery immediately to the Territorial Archaeologist.	About 110 km west of Chesterfield Inlet.

Nunaliin Ilauyun, Aviktuqhimayuniitunullu Ikayuuhiarunguyun

Nunauyuq	Atia	Timiuyuq	Upluani Uqaqatigiyaungmata
Qamaniittuaq	Sheldon Dorey	Hamlet of Baker Lake	2024-02-28
Qamaniittuaq	Angel Awksawnee	Baker Lake Hunters and Trappers Organization	2024-02-28
Igluligaaryuk	Venissa Mimialik	Aqigiq Hunters and Trappers Organization	2024-03-21
Igluligaaryuk	Paul Bosetti	Hamlet of Chesterfield Inlet	2024-03-21
Kangirliniq	Luis Manzo	Kivalliq Inuit Association	2024-02-10

Angiuttauvaktunik

Naunaiqlugu nunanga talvani havauhikhaq ittuq:

Angiuttauvaktunik

Munariniqmut Ayuittiaqtuq	Angirutinga Qanurittuq	Tadja Qanurittaakhaanik	Ublua Tuniyauyuq/Uuktuqtuq	Umikvikhaa Ublua
Kivalliq Inuit Katimayiit	Applied for access to Inuit-owned lands.	Applied, Decision Pending	2024-04-08	
Nunavut Imaligiyyit Katimayit	Applied for APPROVAL FOR THE USE OF WATER OR DEPOSIT OF WASTE WITHOUT A LICENCE	Applied, Decision Pending	2024-03-26	
Nunavut Kavamanga, Nunavunmi Ihivriunqniqmut Timiqutigiyanga	Applied for a Scientific Research Licence Application - Physical / Natural Sciences Research Application	Applied, Decision Pending	2024-04-01	

Project transportation types

Transportation Type	Qanuq Atuqtauniarmangaa	Length of Use
Water	Transported to and from camp by local boat from Baker Lake or Chesterfield Inlet at the beginning and end of the project	

Project accomodation types

Temporary Camp

Ihuaqutivaluin Atuqtauyukhan

Hanalrutit atuqtaunahuat (ukuallu ikuutat, pampiutainnik, tingmitinik, akhaluutinik, hunaluuniit)

Hanalrutit Qanurittuq	Qaffiuyut	Aktikkulaanga – Qanurittullu	Qanuq Atuqtauniarmangaa
generator	1	2000 W	generator electricity for the camp
refrigerator	1	75 lbs	food storage

Qanurittuq Urhuqyuaq unalu Qayangnaqtut Hunavaluit Aturninnga

Qanurittuq urhuqyuaq hunavaluit aturninnga:	Urhuqyuaq Qanurittuq	Qaffiuyut qattaryut	Qattaryuk Aktikkulaanga	Atauttimut Qaffiuyut	Ilanga	Qanuq Atuqtauniarmangaa
Propane	fuel	2	20	40	Lbs	stove and refrigerator
Gasoline	fuel	2	25	50	Liters	generator

Imaqmik Aturninnga

Ubluq qanuraaluk (m3)	Aturumayain imavaluin utiqtittagaani qanuq	Atulirumayain imavaluin utiqtittagani humi
1	Water bucket/jug	Nearby stream/river

Iqqakuq

Ikkakunik Munakgiyauyunik

Havauhikhaq Hulilukaarut	Qanurittuq Iqqakut	Ihumagiyauyuq Qanuraaluktut Atuqtait	Qanuq Iqqakuurniarmangaa	Halummaqtirarnirutikhan piyutin
Camp	Qirnarivyaktuq imaq	5 L daily	greywater pit	N/A
Camp	Ikulalimanngittun iqqakuuvaluin	100 lbs	Transported back to town for proper disposal.	N/A
Camp	Anaagun (inuin anaaguin)	10 lbs	outhouse/burial	N/A

Avatiliriniqmut Ayurhautingit:

The predicted environmental impacts (physical, biological, socioeconomic) are expected to be minimal. A small temporary camp will be set up with everything to be removed at the end of the project, including waste. Noise will be limited to a small generator used in camp during the morning and evening hours. Wildlife will be avoided and monitored by a local wildlife monitor.

Additional Information

SECTION A1: Project Info

SECTION A2: Allweather Road

SECTION A3: Winter Road

SECTION B1: Project Info

SECTION B2: Exploration Activity

SECTION B3: Geosciences

SECTION B4: Drilling

SECTION B5: Stripping

SECTION B6: Underground Activity

SECTION B7: Waste Rock

SECTION B8: Stockpiles

SECTION B9: Mine Development

SECTION B10: Geology

SECTION B11: Mine

SECTION B12: Mill

SECTION C1: Pits

SECTION D1: Facility

SECTION D2: Facility Construction

SECTION D3: Facility Operation

SECTION D4: Vessel Use

SECTION E1: Offshore Survey

SECTION E2: Nearshore Survey

SECTION E3: Vessel Use

SECTION F1: Site Cleanup

SECTION G1: Well Authorization

SECTION G2: Onland Exploration

SECTION G3: Offshore Exploration

SECTION G4: Rig

SECTION H1: Vessel Use

SECTION H2: Disposal At Sea

SECTION I1: Municipal Development

Qanurittuq Ittunik Avatinga: Avatingalluanga

Qanurittuq Ittunik Avatinga: Inuuhimayunut Avatinga

Qanurittuq Ittunik Avatinga: Inungit-maniliurutingit Avatinga

Miscellaneous Project Information

Naunaiyainiq ukuninnga Ayurhautingit unalu Piumayaat Ikikliyuumiutinahuarutit

Tamatkiumayunik Ihuikgutivaktunik

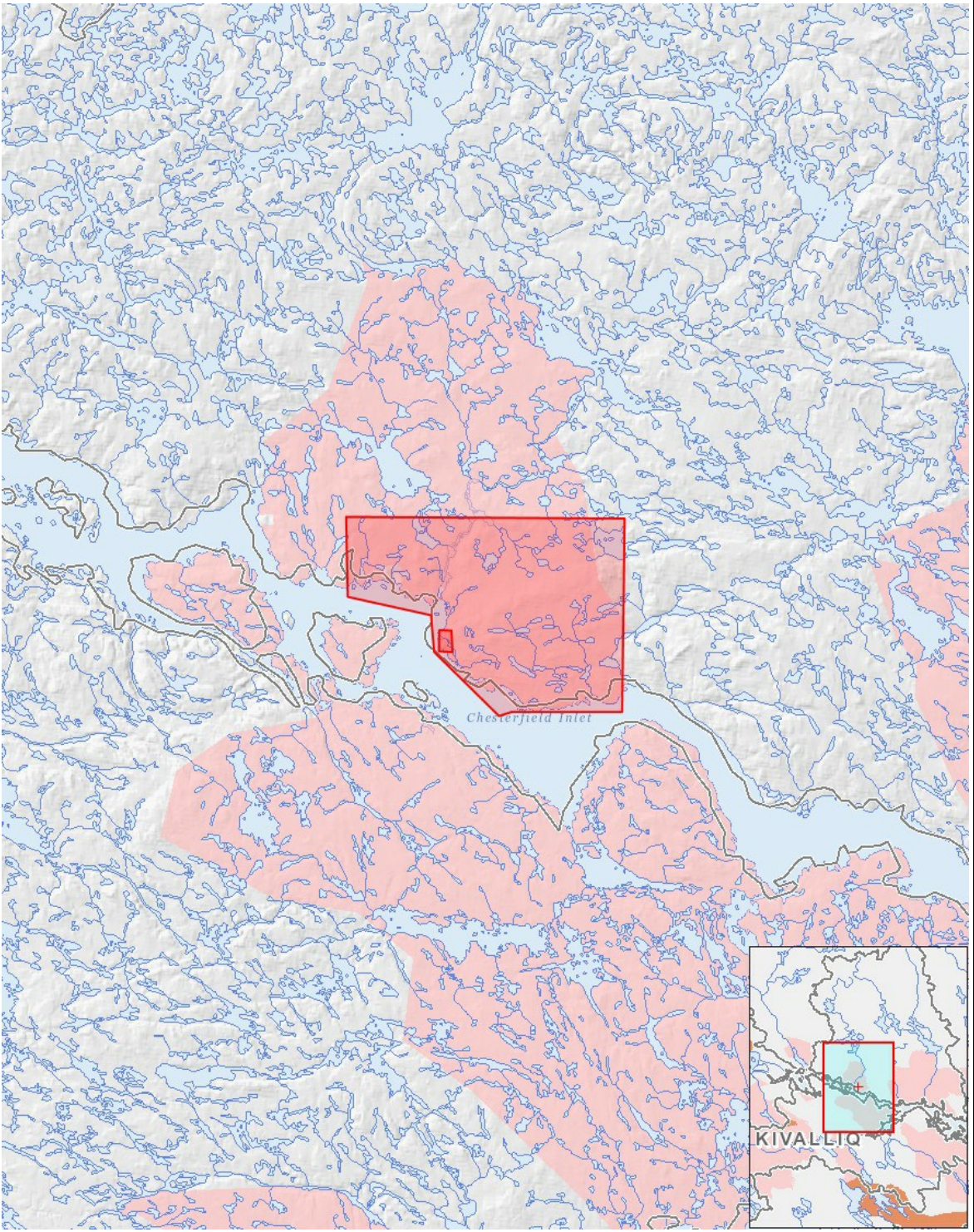
Impacts

Ilitariyauniq Avatiliriniqmut Ayurhautingit

[illegible]

(P = Nakuuyuq, N = Nakuungittut unalu mikhilimaittuq, M = Nakuungittut unalu mikhittaaqtuq, U = Naluyauyuq)

Havaariyauyukhamut Nayugaa



List of Project Geometries

1	polygon	mapping area
2	polygon	camp location