



ወደፊት ሲካተት/ሲገልጽበት ጊዜ
Community Scoping/Guideline Meetings

[illegible]

Scoping and Environmental Impact Statement Guidelines for the NLRB's Review of the Grays Bay Road and Port Project

ΔΔητ Δ^LL LΔ (April – May) 2025

Outline



- NIRB File No. 24XN038

Why is the NIRB visiting your community?

-
- ᐅᓇᖃᑦ ᐱᓂᑦᑕᑎᐱᓄᑦ ᑲᑎᒪᐱᓴᑦ
- NIRB**
- UNAVUT MPACT EVIEW OARD
- NUNAVUMI AVATILIKIYIN KATIMAYIN

ገጽ ፩ ግብርኢኛ ክብረኛ
ወርሃዊ ወር በየገረጽ?

Why is the NIRB visiting your community?

- [illegible]



ᐱᕐᕈᕐᕐ ᕐᕈᕐᕐ ᐱᕐᕈᕐᕐ ᕐᕈᕐᕐ?

What is the Nunavut Impact Review Board?



ᐱᕐᕈᕐᕐ ᕐᕈᕐᕐ ᕐᕈᕐᕐ ᕐᕈᕐᕐ ᕐᕈᕐᕐ
ᕐᕈᕐᕐ ᕐᕈᕐᕐ ᕐᕈᕐᕐ ᕐᕈᕐᕐ ᕐᕈᕐᕐ
ᕐᕈᕐᕐ

An institution of public government responsible for environmental impact assessment of proposed projects in Nunavut

የጋራ ምዕራፍ ለግብርና ኮሚሽን?
Who is the NIRB?

8 ክብረኃይማኖት, 1 ልዩዊጥርኤኃብኃ
 ቡድኑርገረኤ ሲረድሞት ልሊ ልዕልክ በገደቡረኖት
 23 ልዩዊጥርኤኃብኃ

8 board members, 1 Chairperson

Nominated by government and Inuit Organizations

23 staff members

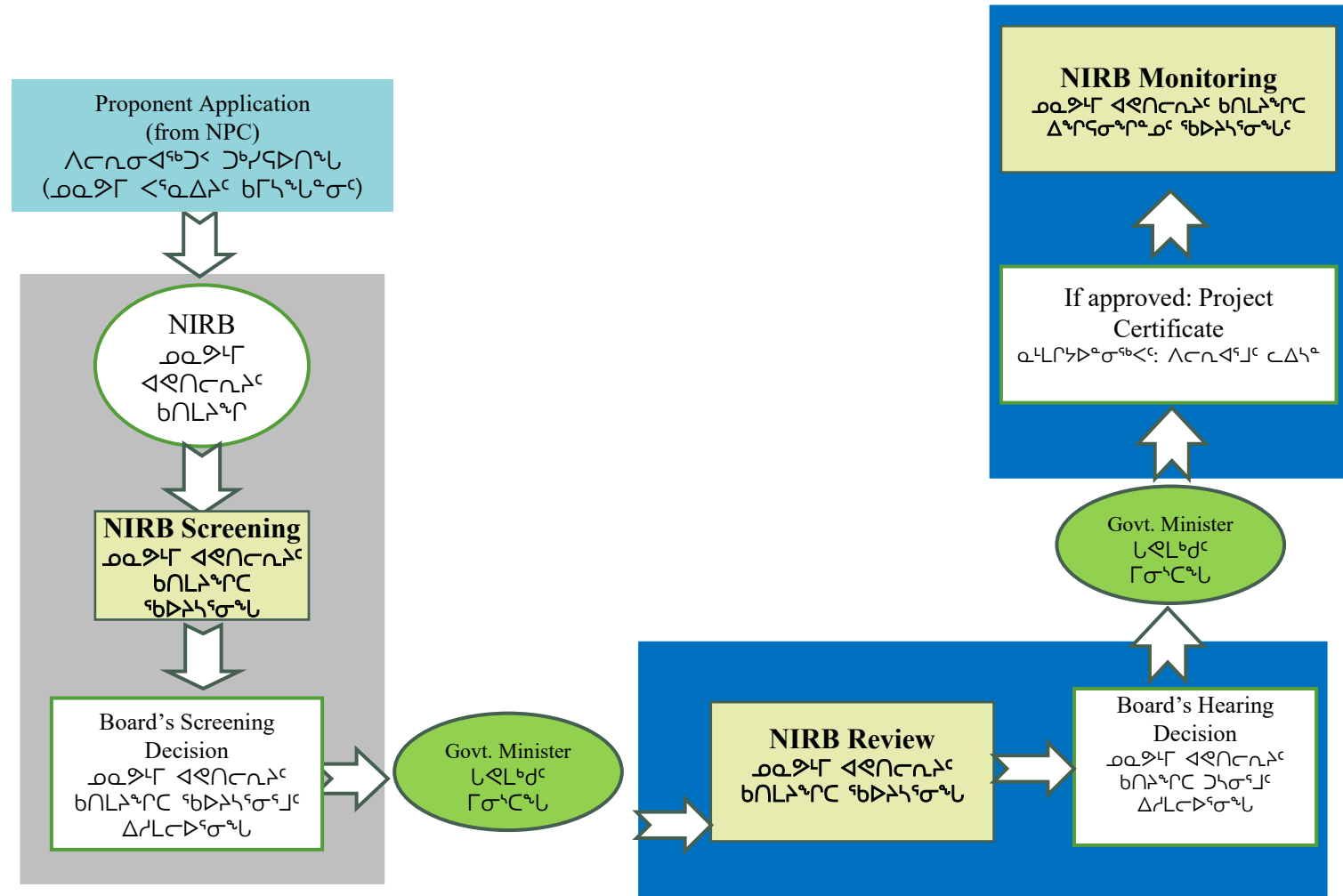
ወደፊት ለደብዳቤ ህብረት ጋናኪኒክ
The NIRB's Mission

- [illegible]

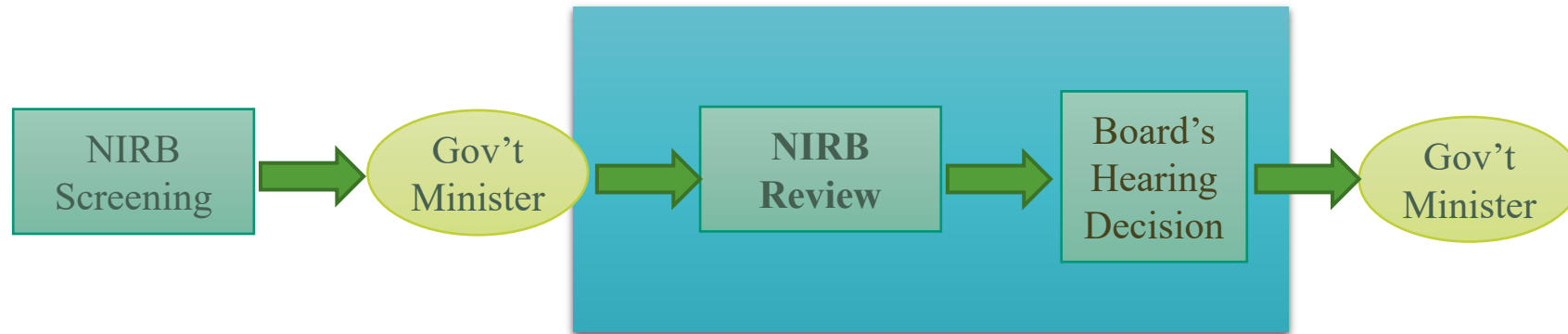
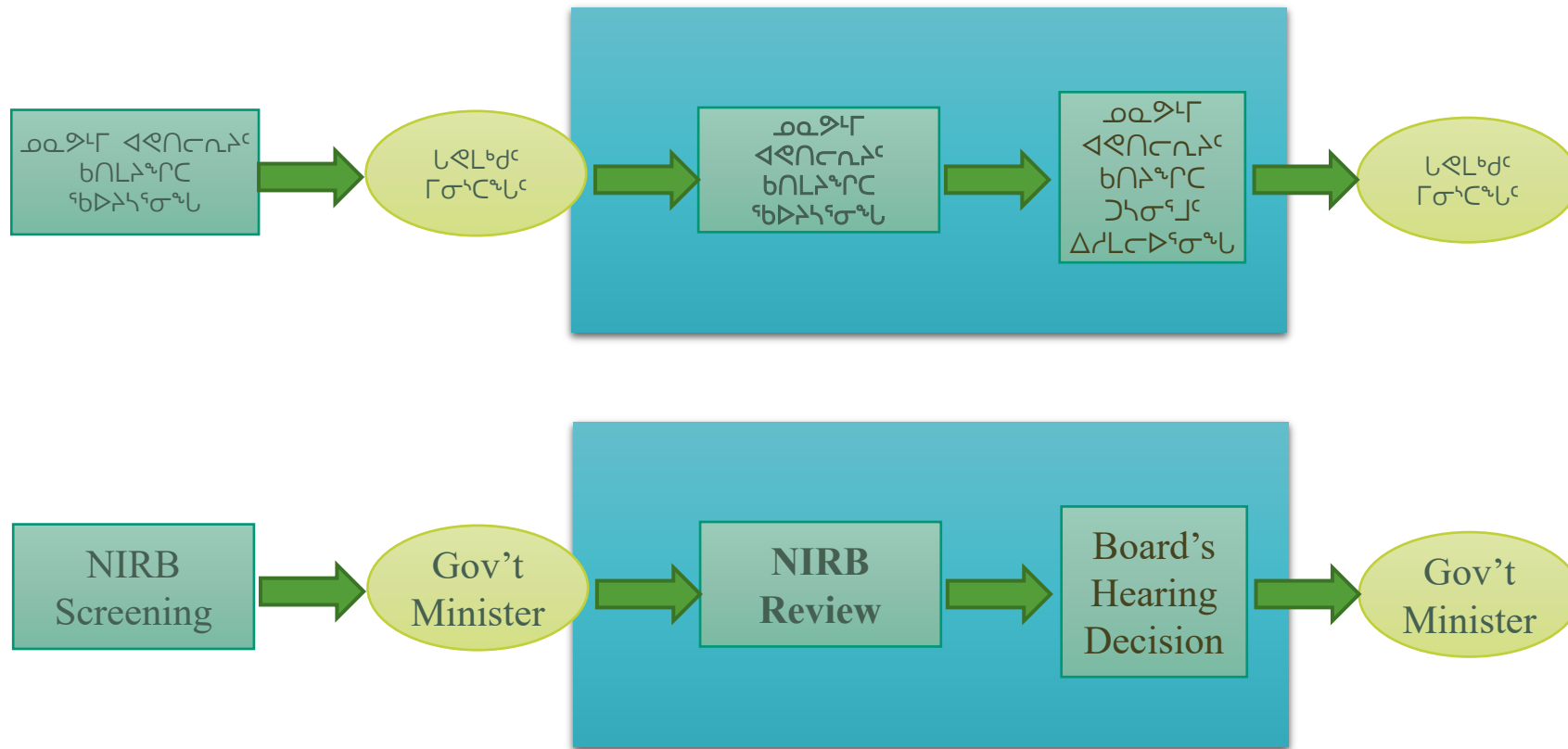
The NIRB's Impact Assessment Process



መደግ ልዩበርቲክ ክብራዊ ልብጋድ ምርመራ ምርመራ ምርመራ The NIRB's Impact Assessment Process



ԳԵՆԵՐԱԼ ԺԱՊՐԱՎՈՐՈՒՄԻ ԵՆԴԱՅԻՆ ԳԵՆԵՐԱԼ ԴՐՈՒՄԻ ՄԱՍԻՆ When does the NIRB do a Review?



Grays Bay Road and Port Project



Who is the Proponent?

- West Kitikmeot Resources Corp.



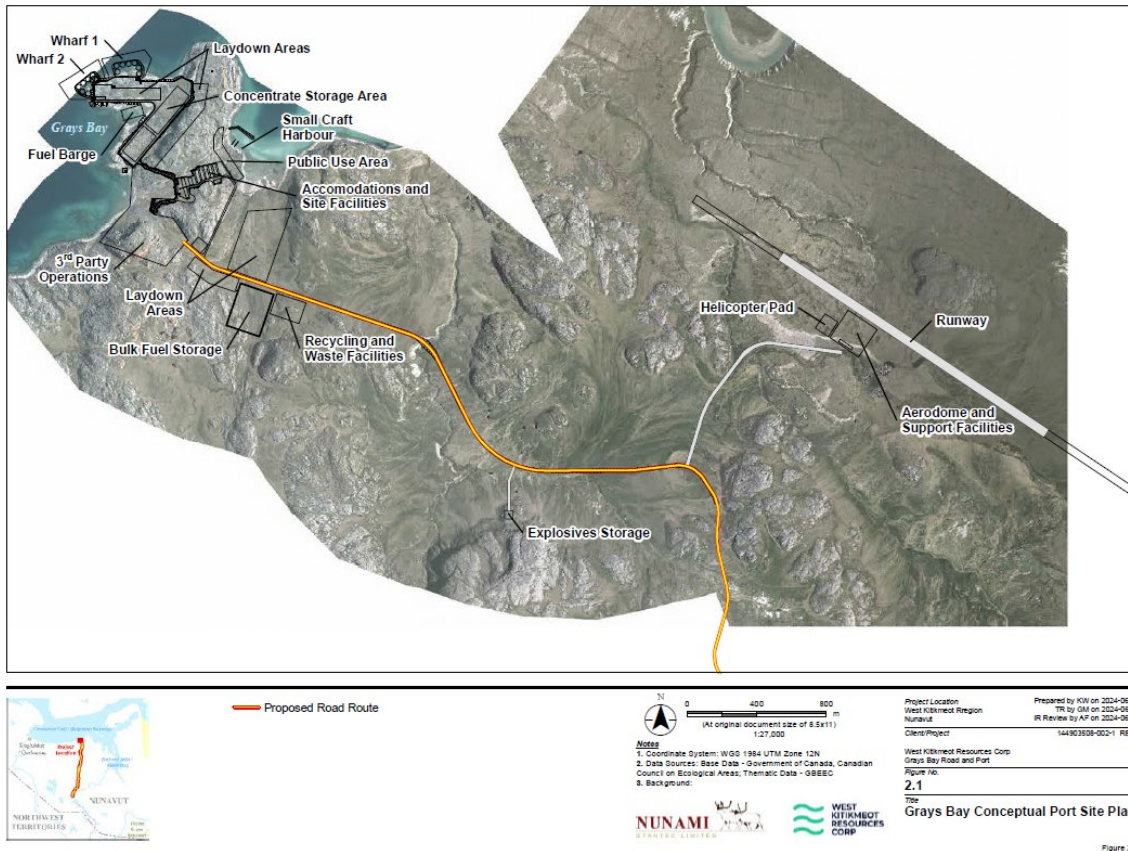
ΛΓΛΔ^{ᑭᑭ}Δ^{ᑭᑭ} Δ^{ᑭᑭ}Γ^{ᑭᑭ} Project Components

- ᑭᑭ^{ᑭᑭ} ᑭᑭ^{ᑭᑭ}ᑭᑭ^{ᑭᑭ} ᑭᑭ^{ᑭᑭ}
- ᑭᑭ^{ᑭᑭ}ᑭᑭ^{ᑭᑭ}ᑭᑭ^{ᑭᑭ} ᑭᑭ^{ᑭᑭ}ᑭᑭ^{ᑭᑭ}ᑭᑭ^{ᑭᑭ} ᑭᑭ^{ᑭᑭ} ᑭᑭ^{ᑭᑭ}ᑭᑭ^{ᑭᑭ}ᑭᑭ^{ᑭᑭ}ᑭᑭ^{ᑭᑭ}
- ᑭᑭ^{ᑭᑭ}ᑭᑭ^{ᑭᑭ} ᑭᑭ^{ᑭᑭ}ᑭᑭ^{ᑭᑭ}
- ᑭᑭ^{ᑭᑭ}ᑭᑭ^{ᑭᑭ} ᑭᑭ^{ᑭᑭ}ᑭᑭ^{ᑭᑭ} ᑭᑭ^{ᑭᑭ}ᑭᑭ^{ᑭᑭ} ᑭᑭ^{ᑭᑭ}ᑭᑭ^{ᑭᑭ}ᑭᑭ^{ᑭᑭ}ᑭᑭ^{ᑭᑭ}ᑭᑭ^{ᑭᑭ}
- Grays Bay Port
- All-Weather Road from the Port to Jericho Station
- Jericho Station
- Winter Road connection to Tibbet-Contwoyto Winter Road

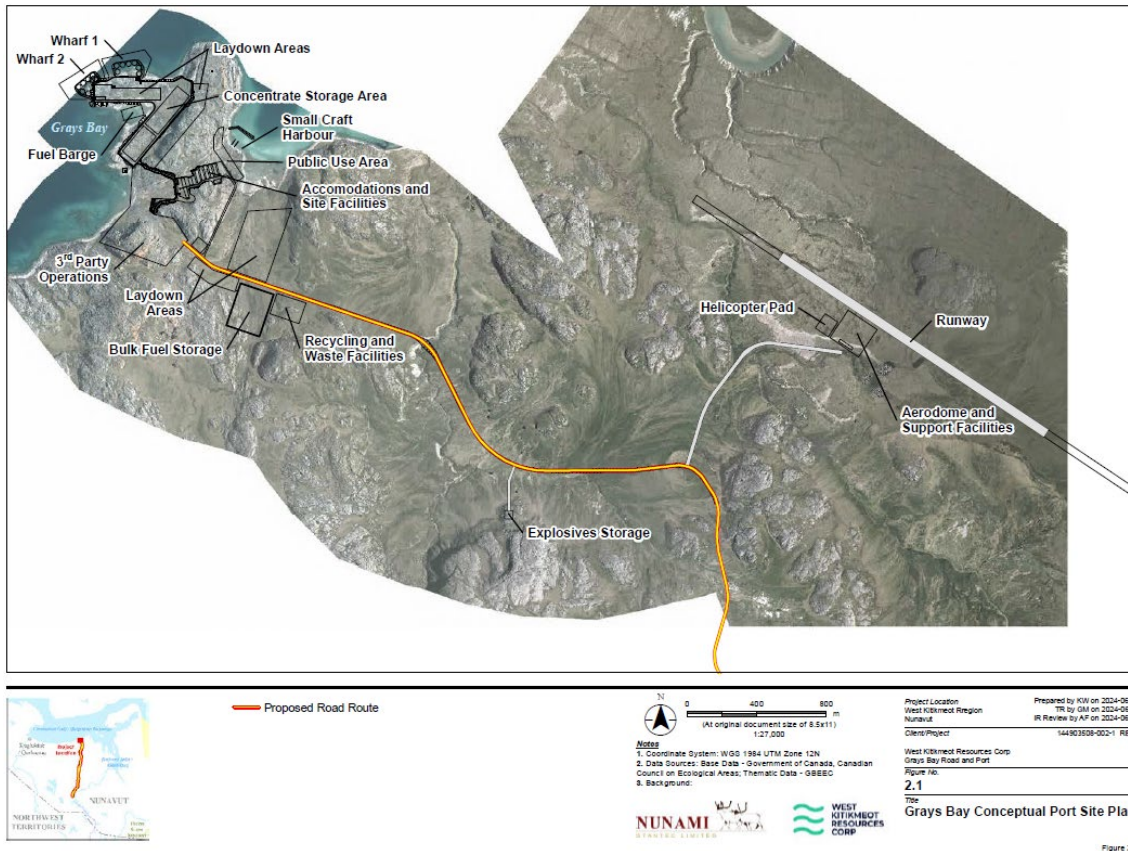


ᑭᓄᓐ ᑕᓄᑦᑭᓄᓐ ᑦᑭᓄᓐ ᑭᓄᓐ Grays Bay Port

- ᑭᓄᓐ ᑭᓄᓐ ᑭᓄᓐ ᑭᓄᓐ ᑭᓄᓐ
- ᑭᓄᓐ (2) ᑭᓄᓐ ᑭᓄᓐ ᑭᓄᓐ ᑭᓄᓐ
100,000-ᑭᓄᓐ ᑭᓄᓐ ᑭᓄᓐ ᑭᓄᓐ
ᑭᓄᓐ ᑭᓄᓐ ᑭᓄᓐ ᑭᓄᓐ ᑭᓄᓐ
- ᑭᓄᓐ (1) ᑭᓄᓐ ᑭᓄᓐ ᑭᓄᓐ
- ᑭᓄᓐ ᑭᓄᓐ ᑭᓄᓐ ᑭᓄᓐ ᑭᓄᓐ ᑭᓄᓐ
ᑭᓄᓐ ᑭᓄᓐ ᑭᓄᓐ ᑭᓄᓐ ᑭᓄᓐ
50 ᑭᓄᓐ ᑭᓄᓐ
- Open Water shipping
- Two (2) deep water wharves suitable for 100,000 deadweight tonnes ore-bulk-oil vessels
- One (1) barge berth
- Small Craft Harbour



ᑭᓄᓐ ᑕᓄᑦᑭᓄᓐ ᑭᓄᓐᑭᓄᓐ Grays Bay Port



- 1,800 ᑭᓄᓐ ᑭᓄᓐᑭᓄᓐ
- ᑭᓄᓐᑭᓄᓐ ᑭᓄᓐ ᑭᓄᓐᑭᓄᓐ ᑭᓄᓐᑭᓄᓐ
- ᑭᓄᓐᑭᓄᓐ ᑭᓄᓐ ᑭᓄᓐᑭᓄᓐ ᑭᓄᓐᑭᓄᓐ
- ᑭᓄᓐᑭᓄᓐ ᑭᓄᓐᑭᓄᓐ 80-ᑭᓄᓐᑭᓄᓐ ᑭᓄᓐᑭᓄᓐ ᑭᓄᓐᑭᓄᓐ 150-ᑭᓄᓐ
- 1,800 m airstrip
- Roads and other infrastructure
- Dredging
- Permanent accommodations for approx. 80 people with temporary accommodations for 150

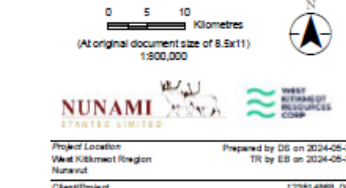
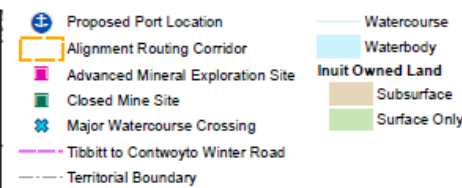
ᑭᓄᓐ ᑕᓄᓐᓂᓐ ᐱᐸᓐᓂᓐ Grays Bay Road

ᑭᓄᓐᓂᓐ

- 230 ᓂᓕᓂᓐ ᓂᓐᓂᓐᓂᓐ ᐱᐸᓐᓂᓐ
- 230-ᐸᓂᓐ ᐱᓂᓐᓂᓐ ᐱᓂᓐᓂᓐ ᐱᓂᓐᓂᓐ ᐱᓂᓐᓂᓐ
- ᓂᓂᓐᓂᓐᓂᓐ 40 ᐸᐸᓐᓂᓐ ᐱᐸᓐᓂᓐ ᐱᓂᓐᓂᓐ
- ᓂᓂᓐᓂᓐ ᐸᓂᓐᓂᓐᓂᓐ ᐱᓂᓐᓂᓐ

During Construction Phase

- 230 km all-season toll road
- Approx. 230 water crossings including bridges and culverts
- Est. 40 quarries and borrow areas and roads
- 4 mobile construction camps



Notes:
1. Coordinate System: WGS 1984 UTM Zone 12N
2. Data Sources: Government of Nunavut, ESRI, Sinteric Consulting Ltd.



ᐱᐸᓐᓂᓐ / April 22, 2025

NIRB File No. 24XN038

This aerial photograph captures a vast open-pit mining operation in a dry, hilly region. The mine's layout is characterized by multiple levels of terraced pits and a network of wide, unpaved roads that facilitate the movement of heavy machinery. In the central part of the image, a yellow drilling rig stands prominently on a flat, gravel-covered area. To its left, a small black vehicle is parked near a pile of waste rock. The surrounding landscape is a mix of green scrub and exposed grey rock. In the far distance, a cluster of industrial buildings and a tall, slender crane are visible, suggesting a processing plant or a support facility. The sky is a uniform, pale blue, indicating a clear day.

- Camp
- Parking, refueling areas
- Tank farm (20 M litres)
- Potential use of Jericho airstrip
- Staging area for winter road cargo

ᐅᐃᐅᐣᐅᐣ ᐃᐸᐸᐅᐣ ᐃᐸᐸᐅᐣᐅᐣ ᐅᐃᐅᐣᐅᐣ ᐃᐸᐸᐅᐣᐅᐣ Winter Road connection to Tibbet-Contwoyto Winter Road



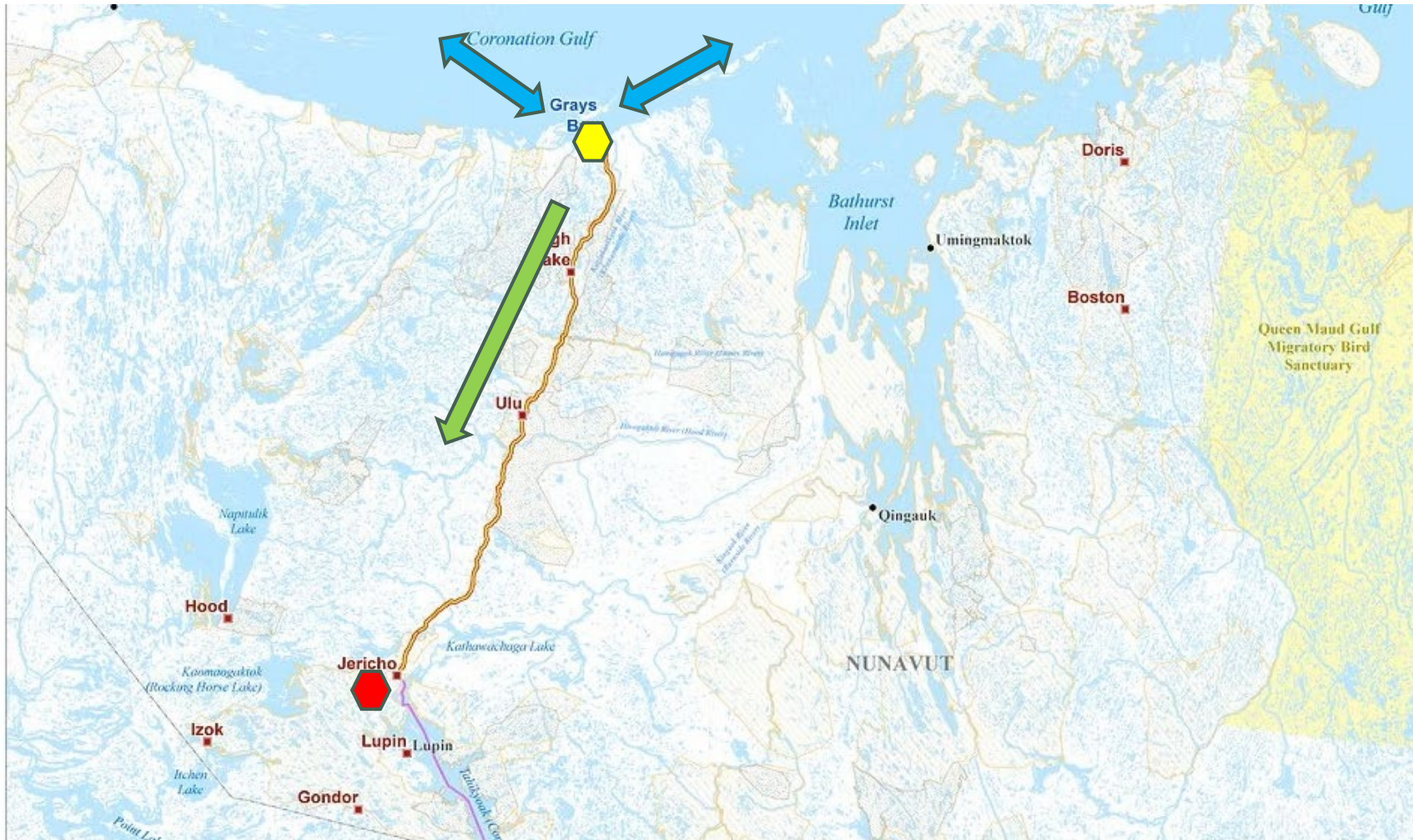
- ᐃᐸᐸᐅᐣᐅᐣ ᐃᐸᐸᐅᐣᐅᐣ ᐅᐃᐅᐣᐅᐣ ᐃᐸᐸᐅᐣᐅᐣ ᐅᐃᐅᐣᐅᐣ ᐃᐸᐸᐅᐣᐅᐣ ᐃᐸᐸᐅᐣᐅᐣ ᐃᐸᐸᐅᐣᐅᐣ ᐃᐸᐸᐅᐣᐅᐣ ᐃᐸᐸᐅᐣᐅᐣ
- Annual construction of a winter road to connect the Jericho Mine to the ice road at the Nunavut/Northwest Territories

Project Schedule

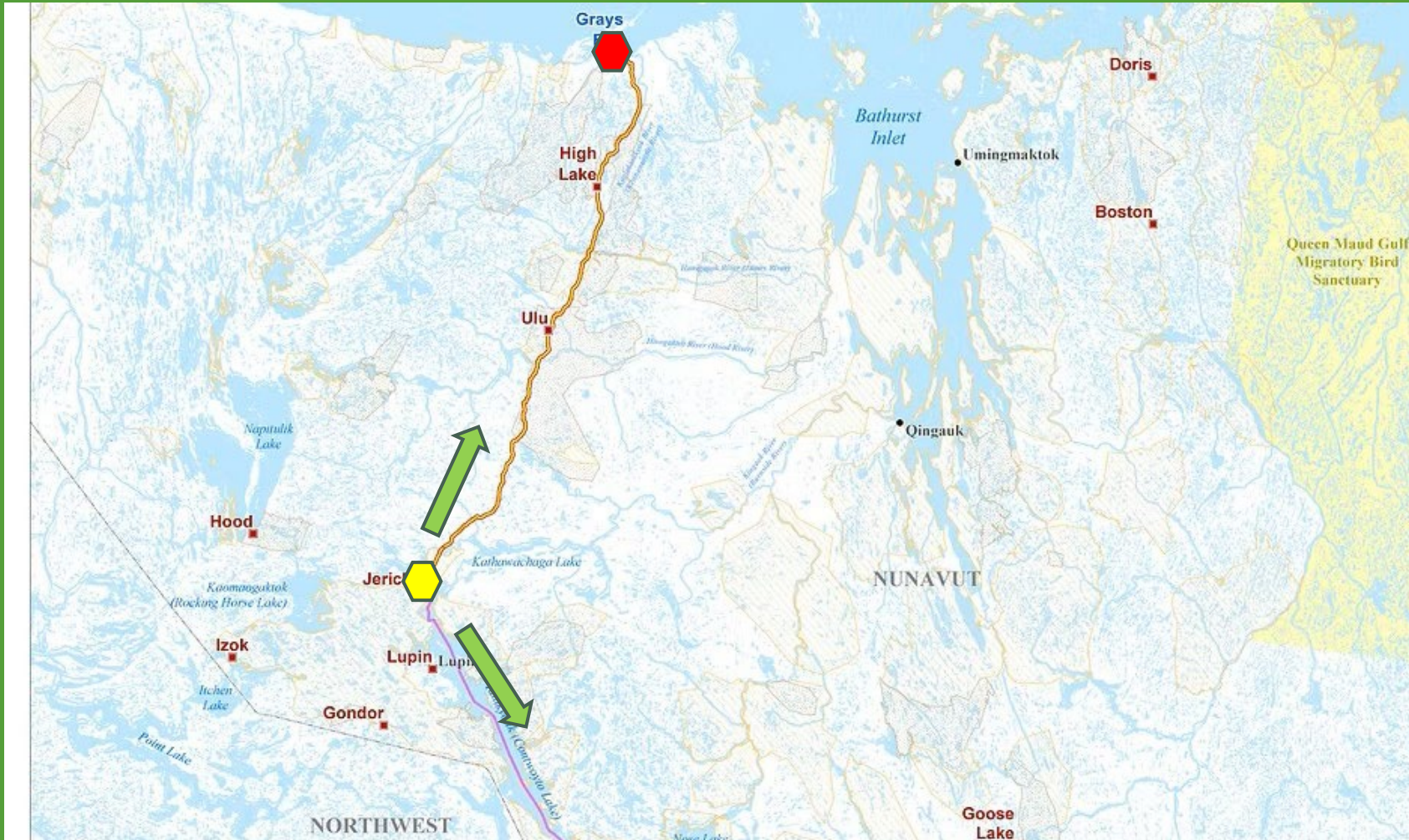
- Δ⁷L¹U¹ 5 Δ⁶J⁶ (2029-2034)
 - ካዲኒድስቲክ ሥራ
 - ካዲኒድስቲክ
- 75 Δ⁶J⁶ Δ⁶J⁶ Δ⁶J⁶
 - Δ⁶J⁶Δ⁶J⁶
- approx. 5 years (2029-2034)
 - Pre-Construction
 - Construction
- 75-year design life
 - Operations



Mobilization and Shipping



Mobilization and Shipping





What is Scoping?

- ፌዴራል ልማትና የከተማ አስተዳደር ሚኒስቴር, የአካባቢ ጥበቃ ሚኒስቴር, የውጭ ኢንቬስትመንት ሚኒስቴር እና የኢንፎርሜሽን ቴክኖሎጂ ሚኒስቴር ይኮሩ
- For NIRB, a SCOPE is a list of all parts of the project, and the parts of the environment that might be affected by the project

“SCOPE” is a tool that helps us see better

- Scoping helps us see better what people think about the project, and what parts of the environment are important to you



ᐃᓯᐃᓐᓂᓐᓂᓐ ᐃᓚᓂᐸᐸ

Changes to the environment

ᓯᐸᓐᓂᓐᓂᓐ Air Quality



ᐸᓂᐃᓐ ᐃᓂᓐᓂᓐ Marine life



ᓄᓇᐃᓐ ᐃᓐᓂᓐᓂᓐ
Ground stability



ᐃᓂᓐᓂᓐ Water



ᓂᓐᓂᓐᓂᓐ Birds



ᓂᓐᓂᓐᓂᓐ Wildlife



ᐸᓯᐸ ᐃᓂᓐᓂᓐ
Freshwater life



ᐱᓯᓐᓂᓐ Vegetation



ሙራር ለሀገራችን Changes to communities

ሙራር ለሀገራችን
 ለጋራው ጥቅም
 Land and Resources Use



ጥጥር ለጥጥር
 Food Security



ለጥጥር ጥጥር
 Livelihood



ለጥጥር ጥጥር
 Employment



ሙራር ለሀገራችን
 ለጥጥር ለጥጥር
 Community infrastructure
 and public services



ሙራር ለሀገራችን
 Archaeology



ለጥጥር ለጥጥር
 Education and Training



Transboundary Impacts



Scoping of the Grays Bay Project



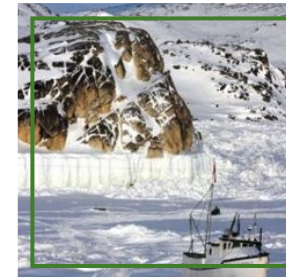
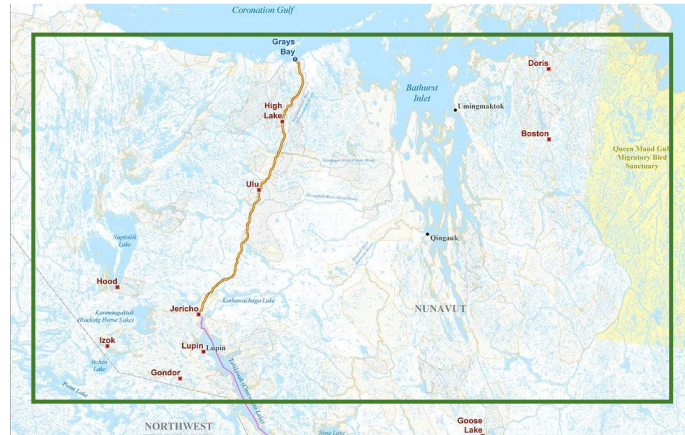
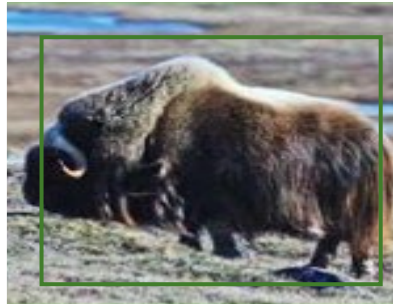
◀Δητ/April 22, 2025

Scoping List

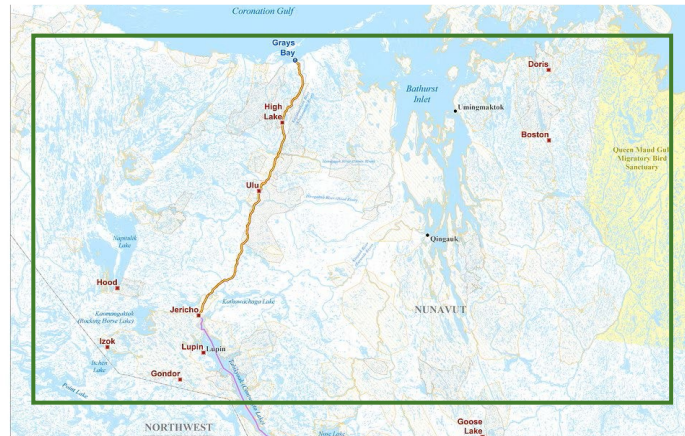
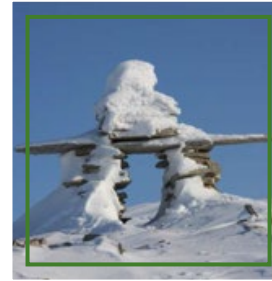
- ለፕሮጀክቱ ዘመናዊነትና የቴክኖሎጂውን ልማትና ከአካባቢ ጋር
 - ዓለም አቀፍ ልማትና የሰው ጤና
 - የሰው ጤና ልማትና የሰው ጤና
 - የሰው ጤና ልማትና የሰው ጤና
- All parts of the Project and activities for the whole time
- Physical and people environments
- Parts of the environment that are important
- Alternative ways to do the project



Ecosystemic Impacts



Socio-Economic Impacts



Other Factors



$b\gamma^c \gamma^c \gamma^c \gamma^c \gamma^c \gamma^c$
 $\gamma^c \gamma^c \gamma^c \gamma^c \gamma^c \gamma^c$
 Cumulative
 effects



Climate Change



$\Delta \rho \rho^c$
 $\Delta \delta \rho \sigma \rho^c$
 $\Delta \sigma \Delta \sigma \Delta \rho^c$
 Transboundary
 effects

Draft Impact Statement Guidelines for the Grays Bay Road and Port Proposal



Draft Impact Statement Guidelines for the Grays Bay Road and Port Proposal

[illegible]

The Guidelines instruct the Proponent what NIRB expects to appear in the Environmental Impact Statement and how it is presented.

Project Details

$$\begin{array}{l} \wedge c_n \triangleleft^a j \sigma \triangleleft^b j < \\ \wedge \varrho^c c \triangleleft \sigma^a r^c \end{array}$$

- $\rho \sigma^b \wedge \tau \wedge \sigma^a \wedge \tau^b \wedge \tau^c$
 $\wedge \sigma^b \wedge \tau^c \wedge$?

ΛC₂Δ^qJK Δ^qLN^qC

- $\Delta \rho \Delta \sigma^b \wedge C_{\mu} \Delta^\mu J^\nu q_\nu \geq 0$

Λσ^ϵ ⊂ Δ^ϵ ρ_Δ ρ_Δ Δ^L
 Q^L ρ_Δ ρ_Δ Δ^L

Project Phases

- When are things going to be done?

Project alternatives

- Are there other ways of doing it?

Accidents and Malfunctions

Project Environment and Impact Assessment

- $\Delta \sigma^a \sigma^b \Delta c \triangleright \cap^c \cap \sigma^{\epsilon b}$
- $\Delta \sigma \Delta^c \epsilon b \triangleright \lambda L \nearrow \supset \epsilon b^a \cap^c, \sigma \sigma \epsilon b^{\epsilon b} \dot{b}^{\epsilon b} \nearrow L \leftarrow^c \epsilon b \triangleright \lambda L \nearrow \supset \epsilon b^a \cap^c, \triangleleft L$
 $\sigma \sigma c^a \sigma \epsilon b \triangleright \lambda L \sigma \triangleright \leftarrow^c$
- Public Engagement
- Inuit Qaujimajatuqangit, Indigenous Knowledge, and Community Knowledge

ᐅᑦᓴᓂᕈᓄᓐ ᐅᑦᓴᓂᕈᓄᓐ
Environmental Management System

- ልዩባልና ልማትጥራትን ማስተካከል
 - ልዩባልና ልማት ንጽሕና ምርመራ
 - የክልል አካባቢ ልማት
ለውጪው የአካባቢ ልማት ምርመራ
ምርመራ
 - የክልል ልማት ምርመራ ምርመራ
 - የክልል ልማት ምርመራ ምርመራ
 - ልማት ምርመራ ምርመራ ምርመራ
 - Environmental management plan
 - Environmental protection plan
 - Monitoring and mitigation plans
 - Follow-up and adaptive management plan
 - Ecosystemic environmental plans
 - Socio-economic environmental plans

How can you learn more about NIRB's assessments?

- $\Delta^{\leq} \sqcup \Gamma \wedge \text{con} \Delta^{\text{sy}} \not\vdash^c \Delta^{\text{LL}} \Delta^{\text{rc}} \Delta^{\text{b}} \Delta^{\text{r}}$

- Active projects and deadlines





ᓄᓇᓂᓄᓐ ᐃᓐᓂᓂᓐᓂᓐ ᑲᓂᓂᓐᓂᓐ ᐃᓂᓐᓂᓐ ᐃᓐᓂᓐᓂᓐ!

NIRB Wants to Hear From You!

ᓐᓂᓄᓐ ᐃᓐᓂᓂᓐᓂᓐ ᐃᓂᓐᓂᓐᓂᓐᓂᓐ?

What do you think about the Project?

ᐃᓐᓂᓂᓐᓂᓐ, ᐃᓐᓂᓂᓐᓂᓐ ᐃᓂᓐᓂᓐᓂᓐᓂᓐ

Comments, questions or concerns

ᐃᓂᓂᓐᓂᓐ
ᐃᓐᓂᓂᓐᓂᓐᓂᓐᓂᓐ ᓄᓇᓂᓄᓐ
ᐃᓐᓂᓂᓐᓂᓐ ᑲᓂᓂᓐᓂᓐᓂᓐ

ᓐᓂᓄᓐ ᐃᓐᓂᓂᓐᓂᓐ ᐃᓂᓐᓂᓐᓂᓐ ᐃᓂᓐᓂᓐᓂᓐᓂᓐ ᐃᓂᓐᓂᓐ?

What environmental components are important to you?

**Fill out a NIRB
comment form!**

ᓐᓂᓄᓐ ᐃᓐᓂᓂᓐᓂᓐᓂᓐᓂᓐ ᐃᓂᓐᓂᓐᓂᓐᓂᓐ ᓄᓇᓂᓄᓐ, ᓂᓐᓂᓐᓂᓐ ᐃᓂᓐᓂᓐᓂᓐ?

What potential effects do you think this Project might have on the land, animals and people?

**▷ኅኅኅኅኅኅኅኅ ኃኃኃኃኃኃኃ ነበረዎታል?
How to contact NIRB?**

Phone (toll-free):
▷ᄇᆞᆯᆫᆯᆺ (◁ᄋᆞᆯᆫᆯᆺ):

1-866-233-3033

Fax:
᠕ᠪᠪᠠᠨᠳᠤ:

(867) 983-2594

[illegible]

info@nirb.ca

Regular post:

Nunavut Impact Review Board
PO Box 1360
Cambridge Bay, NU
X0B 0C0

ΔC↗▷σ◀^{9b}⌋^c:

ወደቅብ ልዩበርቲኖ ክብረትኦር
PO Box 1360
ፈኑክታታብላብ, ወደቅ
XOB 0C0

Closing Remarks

L'ò! Thank you!

L'ò ΔC▷ℙò_Q<ℙ ▷ℙ<ℙòσ ▷<▷ℙ
Thank you for sharing your participation with us today