



Nunalikni Havakhat/Hivuligutit Katimanit Community Scoping/Guideline Meetings

Hivunikhaliurutikhanut Avatiliqinirnut Aktuqtauhimaningit
Kiuviniiit Maliktakhainit haffumani NIRB'ip Qimilurningit
haffumani Agiaqmi Apqutaa unalu Tulakvinga Havaangit

Scoping and Environmental Impact Statement Guidelines for the NLRB's Review of the Grays Bay Road and Port Project

Qitiqqautijug-Qigaijalarvia (April – May) 2025

Ihumaliurut Outline

- Hunaukmat NIRB qanuriliuqqitalu?
 - NIRB-kut Avatilirininnganut Ihivriurniqmut Havaanga
 - Agiaqmi Apqutaa unalu Tulakvinga Havaangit
 - Uuktut Havakhat Titiqat taphumunga Grays Bay Apqut Tulakviklu Havanguyuq Uuktut
 - Inniqhimangittuq maligautiqhait hanningajunghut havaanut tuqhiqtuttiqhait
-
- What is the NIRB and what do we do?
 - The NIRB's impact assessment process
 - Grays Bay Road and Port Project
 - *Draft Scope List for the Grays Bay Road and Port Project Proposal*
 - *Draft IS Guidelines for the Grays Bay Road and Port Proposal*



Why is the NIRB visiting your community?

-
- The logo features a stylized green map of Nunavut in the background. Overlaid on the map is the Inuktitut name "ᐅᓇᑭᓴ ᐃᕙᐅᓚᓂᐃᐅᓪᓄᓪ ᓅᐅᓴᓴᓯᓪ" in black syllabics, which translates to "Department of Environment and Natural Resources". Below this, there is a red Canadian maple leaf. At the bottom, the acronym "NIRB" is written in large, bold, black letters. Underneath each letter of the acronym are its English components: "UNAVUT" under N, "MPACT" under I, "EVIEW" under R, and "OARD" under B. Finally, the full name "NUNAVUMI AVATILIKIYIN KATIMAYIN" is written in all caps at the very bottom.

Why is the NIRB visiting your community?

-
- The logo features a stylized green tree in the background. At the top, there is a curved banner containing Inuktitut text. Below this is a red maple leaf. The main part of the logo consists of the letters "NIRB" in large, bold, black font. Underneath "NIRB", the words "UNAVUT IMPACT REVIEW BOARD" are written in smaller, black, all-caps font. At the bottom, the Inuktitut phrase "NUNAVUMI AVATILIKIYIN KATIMAYIN" is displayed in a bold, black, all-caps font.

Kitkuukmata NIRB? Who is the NIRB?

8nik katimayiilgit, atauhiqmik Ikhivautalikmik
Niruaqtuyuq kavamatkunnit Inuit Timiqutigiyayunillu
23 nit havaktiqaqtut

8 board members, 1 Chairperson
Nominated by government and Inuit Organizations
23 staff members

NIRB-kut Tikinnahuaqtangit

The NIRB's Mission

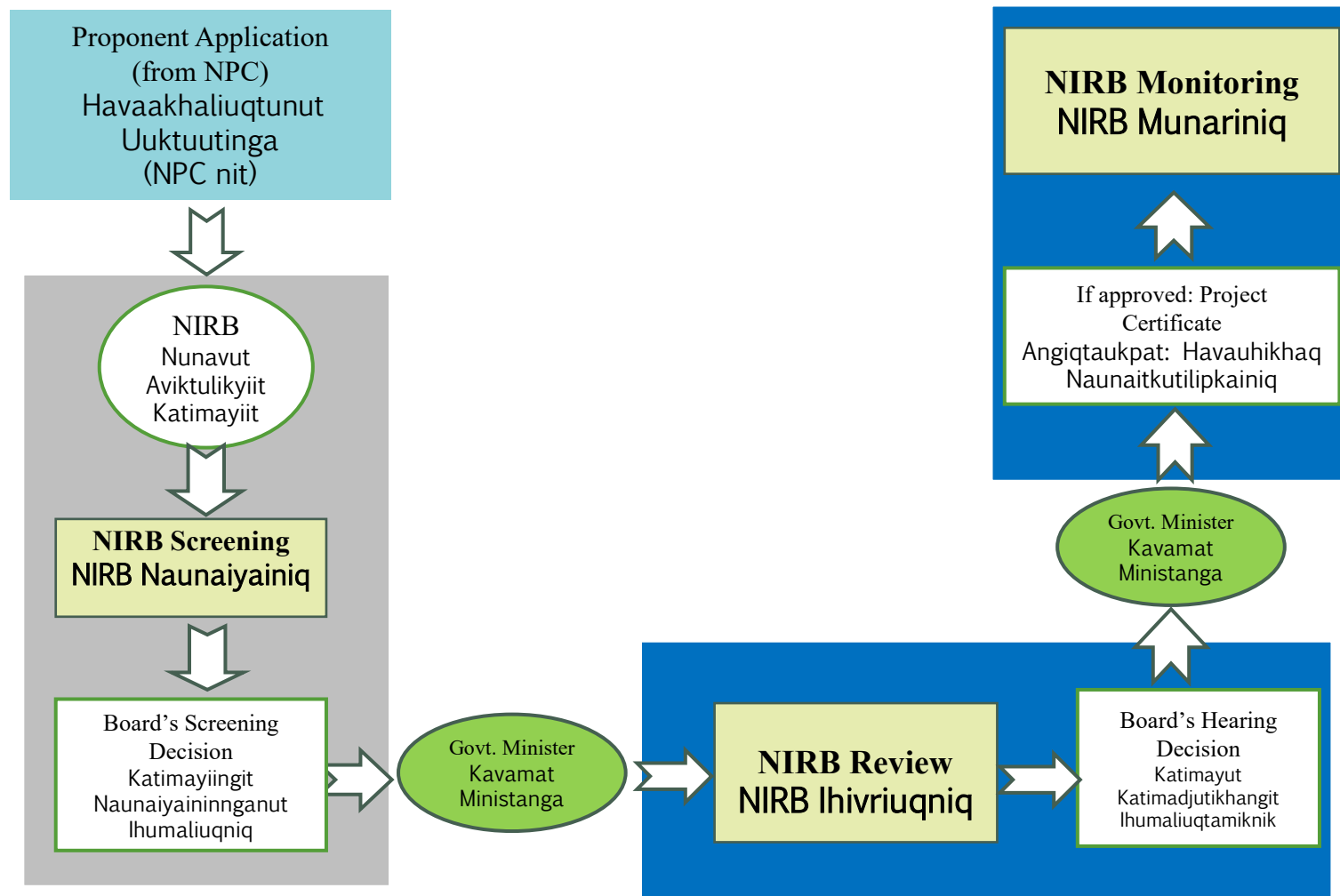
- Hapumminahuarlugit ikayurnahuarlugillu inuuttiarnikkut haffumani avatinut Nunavunmiunut aktuqtaunnirumik ihivriurnigut piliriangit
- To protect and promote the well being of the Environment and Nunavummiut through the impact assessment process

The NLRB's Impact Assessment Process



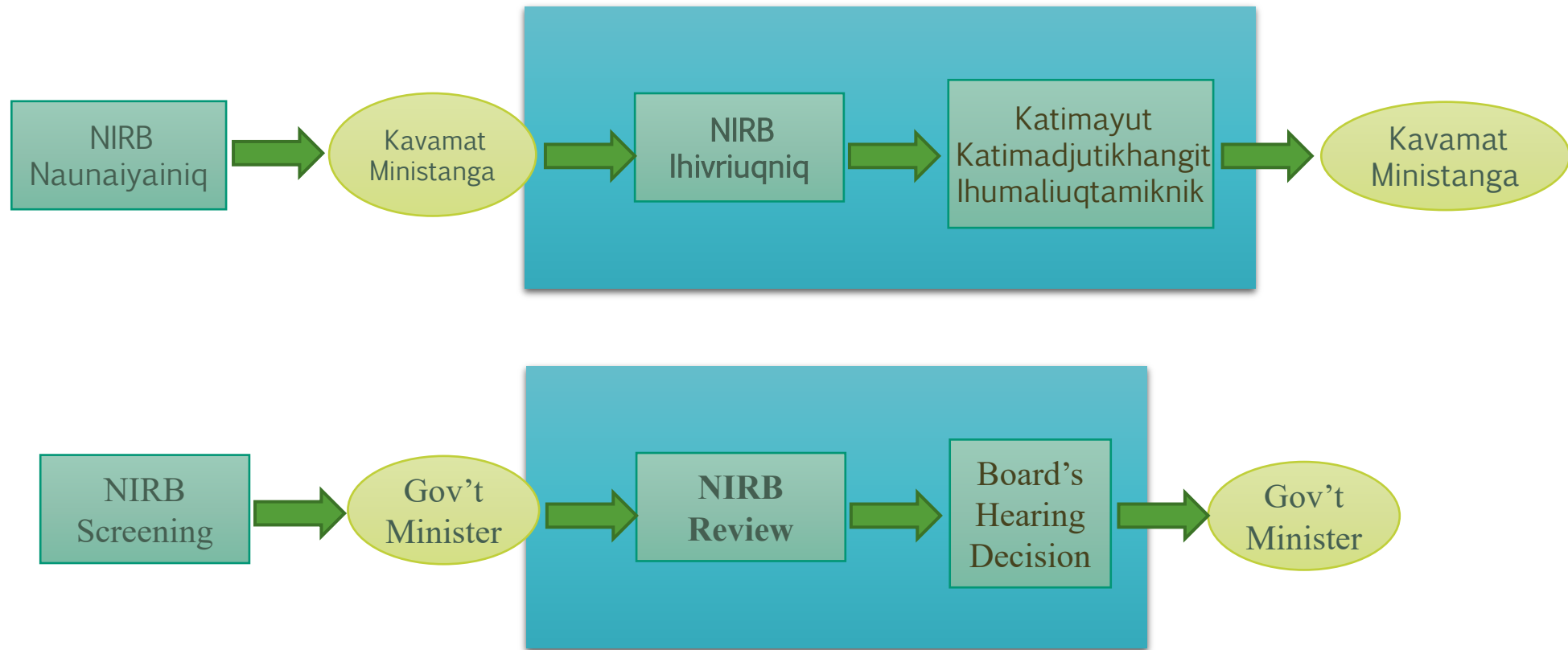
Tamna NIRB-kut Pilaqutinga Naunaiyaininnga Havaanga

The NIRB's Impact Assessment Process



Qakugu NIRB-kut Ihivriunqiaqqat?

When does the NIRB do a Review?



Ihivriunig Havaanga Naittuq

Review Process Overview



Grays Bay Road and Port Project



Kituuva havaakhaliuqtup? Who is the Proponent?

- West Kitikmeot Resources Corp.

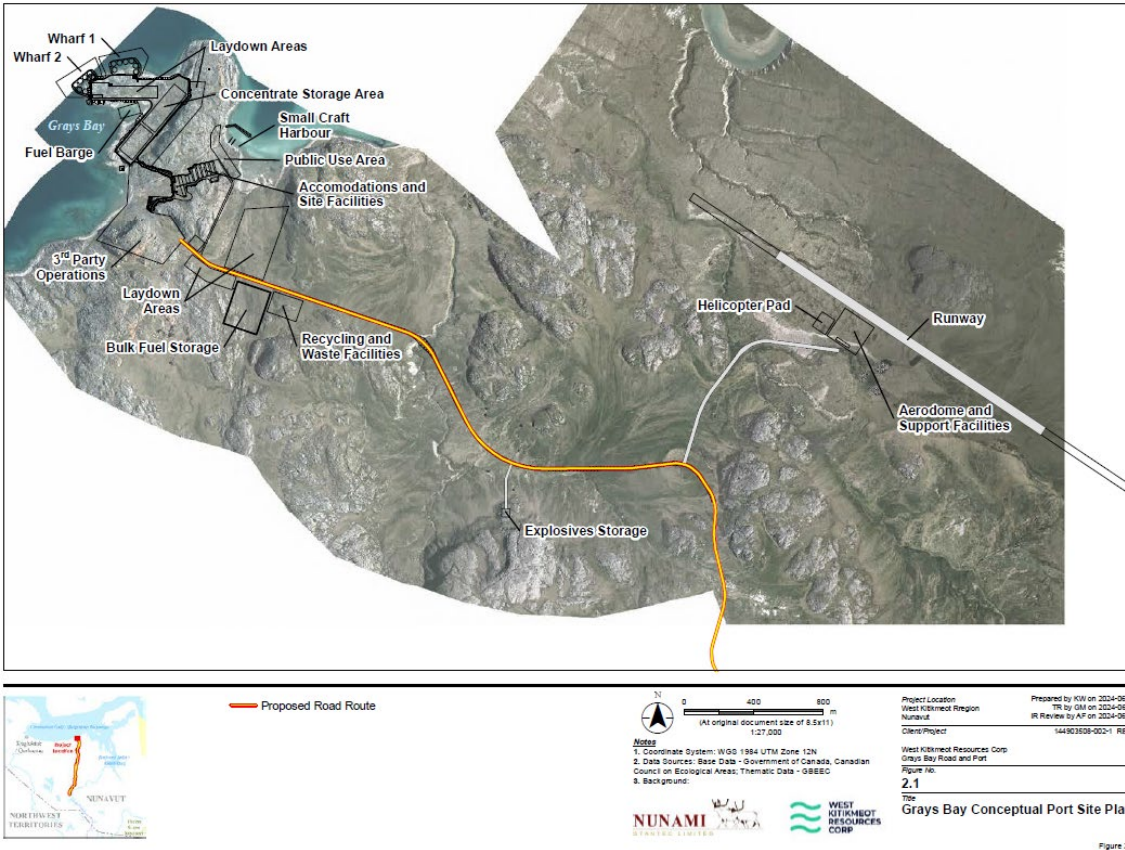


Humi Havauhikhaq Project Components

- Agiaqmi Tulakvinga
- Ukiuraalungmi Apqutinga hamanngat Ikaaruhianmit uvunga
- Jericho Havagviata
- Ukiumi Apqutaa katilviuhimayuq uvunga Tibbitt-Tahiryuaq
Ukiumi Apqutaa
- Grays Bay Port
- All-Weather Road from the Port to Jericho Station
- Jericho Station
- Winter Road connection to Tibbet-Contwoyto Winter Road

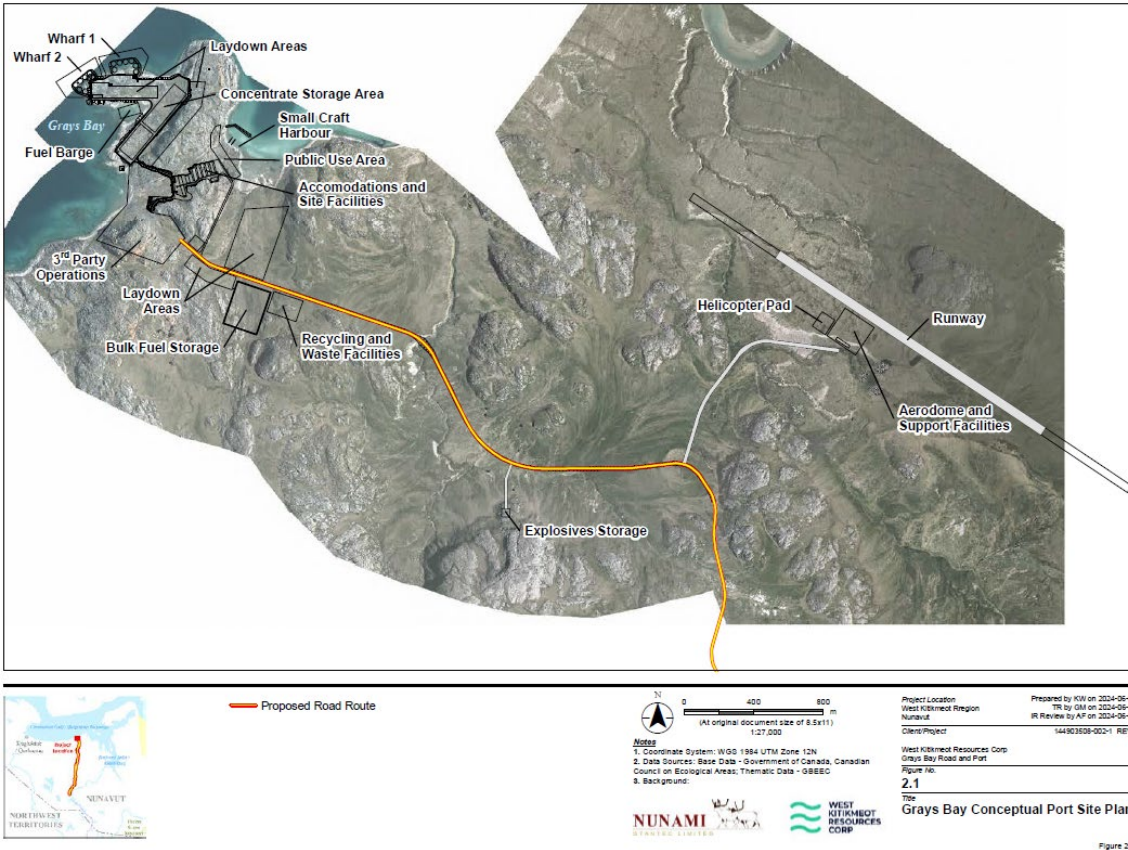


Agiaqmi Tulakvinga Grays Bay Port



- Hikuiqhimagaangat Taryurmi Umiaqtuqtumi
- Malruk (2) itiyuq imaq tulaumavik naamalat tapkununga 100,000 duqumaitikkutai tonnes havikhat-angiyut-uqhuqyuaq umiaqpait (kinguagut-Panamax aktilaq)
- Atauhiq (1) kalutaq inikha
- Mikkat tinginiat milviqhaa imakmi
- Open Water shipping
- Two (2) deep water wharves suitable for 100,000 deadweight tonnes ore-bulk-oil vessels
- One (1) barge berth
- Small Craft Harbour

Agiaqmi Tulakvinga Grays Bay Port



- 1,800 miitas Milvik
 - Apqutiit aahiillu igluqpaqarvikhaliuqtut
 - Hauvikhangit uvani Agiaqmi
Tulagvikhaq
 - Atuinaqtukhat hiniktaqvut mikhaanut
80 inungnut tamnalu atullaktukhaq
hiniktaqvut tapkununga 150
-
- 1,800 m airstrip
 - Roads and other infrastructure
 - Dredging
 - Permanent accommodations for approx.
80 people with temporary
accommodations for 150

Agiaqmi Apqutaa Grays Bay Road








Atuqtitlugu Hanayaunia Tukliriknia

- 230 km taimaa hilaliqutingit apqutikhaat
- Mikhaani 230 imait ikaqtuqvit ilautitlugit ikaarutit huplutlu immat kuuvit
- Mikhaani 40 tuapaktaqvit iluttuqtiqnitlu inait apqutitlu
- 4 nuktiralat hanayauni hiniktaqvit

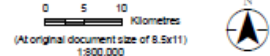
During Construction Phase

- 230 km all-season toll road
- Approx. 230 water crossings including bridges and culverts
- Est. 40 quarries and borrow areas and roads
- 4 mobile construction camps



-  Proposed Port Location
-  Alignment Routing Corridor
-  Advanced Mineral Exploration Site
-  Closed Mine Site
-  Major Watercourse Crossing
-  Tibbitt to Contwoyto Winter Road
-  Territorial Boundary

Watercourse
 Waterbody
Inuit Owned Land
 Subsurface
 Surface Only



Project Location	Prepared by DS on 2024-05-21
West Kitikmeot Region	TR by EB on 2024-05-21
Nunavut	
Client/Project	120514888_00
West Kitikmeot Resources Corp	
Grays Bay Road and Port	

Figure No.
2.4 1 of 2
Title
Grays Bay Road

Notes
1. Coordinate System: WGS 1984 UTM Zone 12N
2. Data Sources: Government of Nunavut, ESRI,
Stanlec Consulting Ltd.

Agiaqmi Apqutaa Grays Bay Road




Aulataunia Tukliriknia

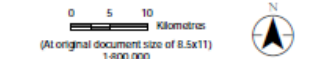
- Mikhaani tamaat 3-ngat tuapaktaqvik aulangittut atuqtut, ilautitlugu atuqni qaqtautit, tuapaliakhanut hanayaunit apqutit ihuaqhihimaninut
- Ihuaqhihimani hanayaunilu apqutit piqatailu imaiqaqnit ikaqtuqvit piyaqarangat

During operations phase

- Approximately every third quarry remaining active, including use of explosives, for aggregate production for road maintenance
- Maintenance and repair of the road and associated watercourse crossings as needed



- | | | | |
|---------------------------------------------------------------------------------------|-----------------------------------|---------------------------------------------------------------------------------------|--------------|
|  | Proposed Port Location |  | Watercourse |
|  | Alignment Routing Corridor |  | Waterbody |
|  | Advanced Mineral Exploration Site | Inuit Owned Land | |
|  | Closed Mine Site |  | Article 41 |
|  | Major Watercourse Crossing |  | Subsurface |
|  | Tibbitt to Contwoyo Winter Road |  | Surface Only |
|  | Territorial Boundary | | |



Project Location	Prepared by DS on 2024-05-3
West Kootenay Region	TR by EB on 2024-05-3
Nanaimo	

Notes
1. Coordinate System: WGS 1984 UTM Zone 12N
2. Data Sources: Government of Nunavut, ESRI,
Stantec Consulting Ltd.

Jericho Havakvia Jericho Station



- Iglukakviit
- Akhaluutiqarvingit, uqhuryualiqinikkut iningit
- Uqhuryuaqarvik (20 milian liitastigut)
- Atuqtaunniarungnaqhivangit uumani Jericho milvingit
- Ihuaqharvikhangit ukiumi apqutingit agyaqhiivingit
- Camp
- Parking, refueling areas
- Tank farm (20 M litres)
- Potential use of Jericho airstrip
- Staging area for winter road cargo

Ukiumi apqutingit hamanngat Jericho Havagvingnit Tahiryuarmut unalu Tibbitt-Tahiryuaq Ukiumi Apqutaa Winter Road connection to Tibbet-Contwoyto Winter Road



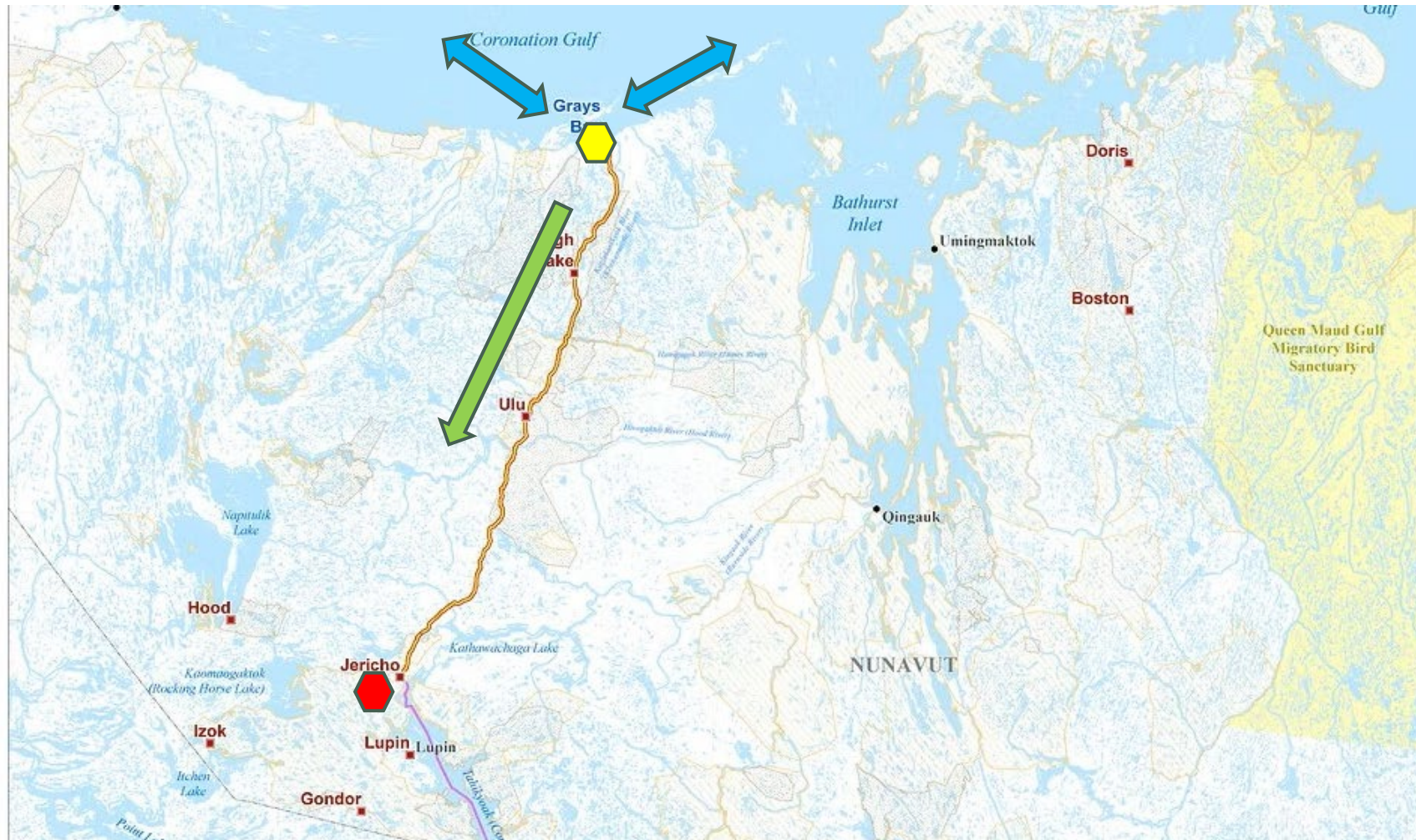
- Ukiumut hanayaunia ukiumi hikukkut apqut atatyuta tamna Jericho Uyarakhiuqvik hikumi apqut talvani Nunavut/Nunatsiaq
- Annual construction of a winter road to connect the Jericho Mine to the ice road at the Nunavut/Northwest Territories

Havauhikhamut Naunaitkutinga Project Schedule

- 5 ukiungani (2029-2034)
 - Igluliuqtinnani
 - Igluliurvikhaat
- 75 ukiungani tiliurvikhaat ukiungani
 - Aulapkaininnga
- approx. 5 years (2029-2034)
 - Pre-Construction
 - Construction
- 75-year design life
 - Operations



Ingilravikhaat Agyartuiyut Mobilization and Shipping



Ingilravikhaat Agyartuiyut Mobilization and Shipping



Hunaugami Hivunikhautikhaat ? What is Scoping?



◀Δητ/April 22, 2025

Hunaugami Hivunikhautikhaat? What is Scoping?

- Uumani NIRB, una HIVUNIKHAQ tamaita tainiqagtunq tamatia havaanut, unalu ilangani avatingnut aktuqhimalaaqtut havaatigut
- For NIRB, a SCOPE is a list of all parts of the project, and the parts of the environment that might be affected by the project

Una “HIVUNIKHAQ” ingilrutauyq ikayuutauyuq taututtiariangani A “SCOPE” is a tool that helps us see better

- Hivunikhautikhaq ikayuutauvlunilu taututtiariangani qanuq inuit ihumagiyaat havaatigut, hunalu ilangani haffumani avatingit aturnaqtut ilingnut
- Scoping helps us see better what people think about the project, and what parts of the environment are important to you



Aadlangurniq avatinganut

Changes to the environment

Aniqhaaqtaptiknik
qanirutaakhaa
Air Quality



Tariuqmi uumayut
Marine life



Nunannga naptuninnga
Ground stability



Imaktiggut Water



Tingmiangit Birds



Huraatiggut Wildlife



Imaqmi uumayut
Freshwater life



Nunami nauhimayut Vegetation



Aadlangurniq nunallaanut Changes to communities

Nunanganik Ikayuutikhamullu Aturningga Land and Resources Use



Niqiullaiqtailiniq
Food Security



Nunallaanut aulapkaidjutikhangit inungnullu
ikayuutikhat Community infrastructure and public
services



Inuuhingit Livelihood



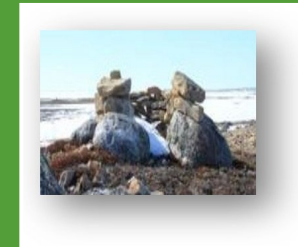
Havaakhat Employment



Ilihainiq ayuirhainiqlu
Education and Training



Inituqniirliriit Archaeology



Ingilganikmun Nungumaah Ihuikgutait

Transboundary Impacts



HIVUNIKHAUTIKHANGIT HAFFUMANI AGIAQMI HAVAANGIT Scoping of the Grays Bay Project



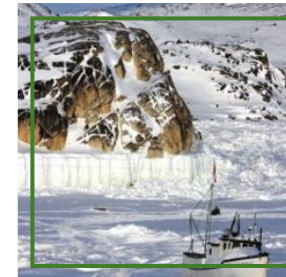
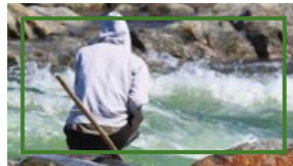
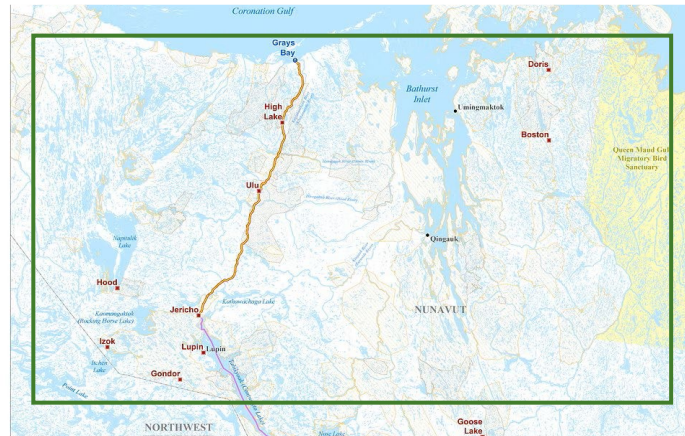
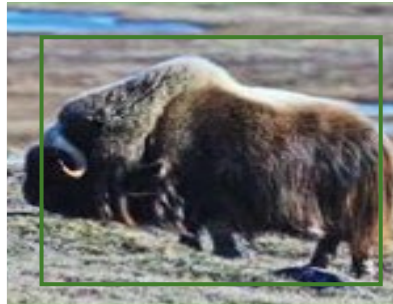
◀Δηρ/April 22, 2025

Hivunikhautikhangit Tainiit Scoping List

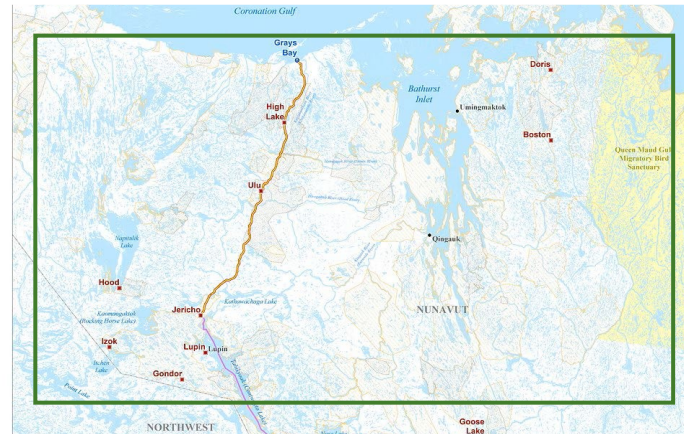
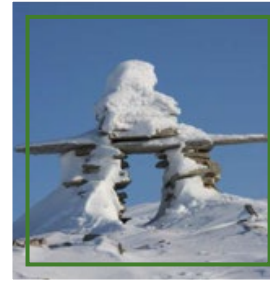
- Tamaita ilanganit Havaanut huliyaqhangillu qautamaat
- Qaanganit inungnullu avataita
 - Ilangani haffumani avataita atuliqtauyukhaq
- Himmauhikhamaat inikhaanut qanuq havaktauyaamingni
- All parts of the Project and activities for the whole time
- Physical and people environments
 - Parts of the environment that are important
- Alternative ways to do the project



Avatinganut Ayurhautingit Ecosystemic Impacts



Inungnut ikayuutikhait Ayurhautingit Socio-Economic Impacts



Aallait Ihumaaluutingit

Other Factors



Tamatkiumayunik
Ihuikgutivaktunik
Cumulative effects



Hilaryuami
alanguktuk
Climate Change



Kiklinganut
qanuriliurutauyut
Transboundary
effects



Draft Impact Statement Guidelines for the Grays Bay Road and Port Proposal

Una Maliktakhait ilitturnaqtuq Havaakhaliuqtum qanuq NIRB naahurihimayangit tautugiami iluani Avatiliqinirnut Aktuqtauhimaningit Kiuviniiit qanurlu tautungniarmangaat.

The Guidelines instruct the Proponent what NIRB expects to appear in the Environmental Impact Statement and how it is presented.

Maliktakhangit Havaanut Hivunikhaat Project Details

Havauhikhaq Ilangat

- Qakugu hulidjuhiit iniqhimaniaqqat?

Project Phases

- When are things going to be done?

Havaatigut himmauhikhanit

Aahiit inikhautiqaqat pigiami?

Project alternatives

- Are there other ways of doing it?

Qanuriliuqaqqat huyuqaqqallu

Accidents and Malfunctions

Havaanum avatilikinikmun unalu tutvia ihivriuqhiinle Project Environment and Impact Assessment

- Qanurittaakhaanik uumannga Avatinga unalu Kiklinga naunaitkutat
 - Qanuq nunaup avatingit itpa tadjja?
- Avatinganit Avatinga unalu Ayurhautiyuq Ihivriuqninnga
- Inungnut maniliurninnga Avatinga unalu Ayurhautiyuq Ihivriuqninnga
- Description of the Environment and Baseline information
 - What does the environment look like now?
- Biophysical Environment and Impact Assessment
- Socio-Economic Environment and Impact Assessment

Havaanum avatilikinikmun unalu tutvia ihivriughiinle Project Environment and Impact Assessment

- Katimariq/katimapgai
- Inuit Qaujimagatuqangit, nunakakaaktutlu, Ilihimajaaminiik unalu nunalaani
- Public Engagement
- Inuit Qaujimagatuqangit, Indigenous Knowledge, and Community Knowledge

Avatilikinikmun munaqhiinikmunlu naunaitkutait Environmental Management System

- Avatilikinikmun munaqhijiinikmunlu pangnaijutiqa
 - Avatiliriniqmut Hapummiutinga Ihumaliurut
 - Munariniq unalu Ikikliyuumiqtuq Ihumaliurutit
 - Naunaitiinikmun unalu ihuqhilaktunniq munaqhijiinik pangnaijutiqa
 - Hilaap avatilikinip pangnaijutiqhait
 - Innuhilikinikmun havaaqhanunlu pangnaijutiqhait
 - Environmental management plan
 - Environmental protection plan
 - Monitoring and mitigation plans
 - Follow-up and adaptive management plan
 - Ecosystemic environmental plans
 - Socio-economic environmental plans

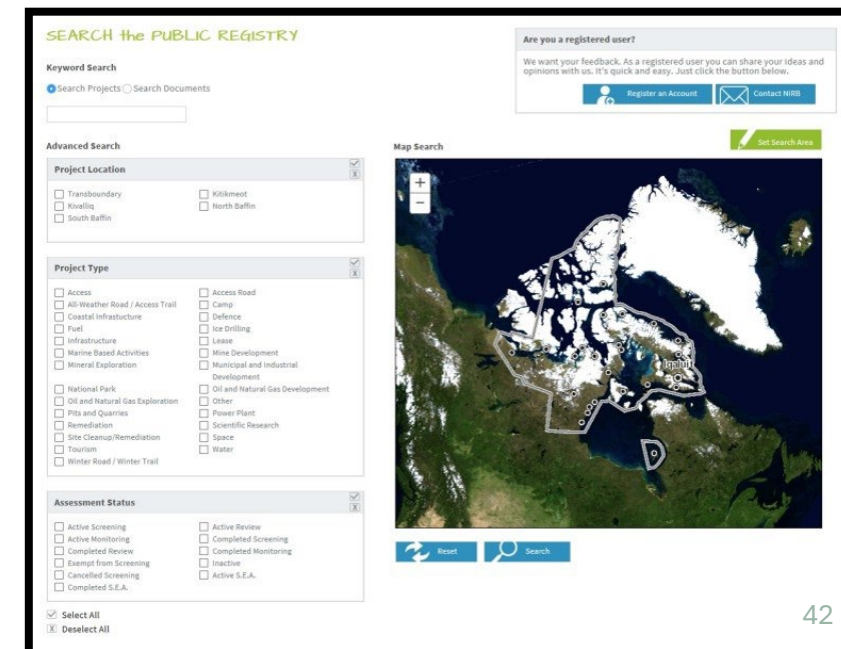
Qanuq ilitpaalliqniaqqit NIRB-kut qauyihagtaitnik? How can you learn more about NIRB's assessments?

Inuit Titiraqviat

- Qiniqluhi havaaghaqnik titiraqmikluuniit
- Atiliqtuqtauluhi naunaitkutanik tuniyauqattariami

Public Registry

- Search for project or document
- Register to receive notifications



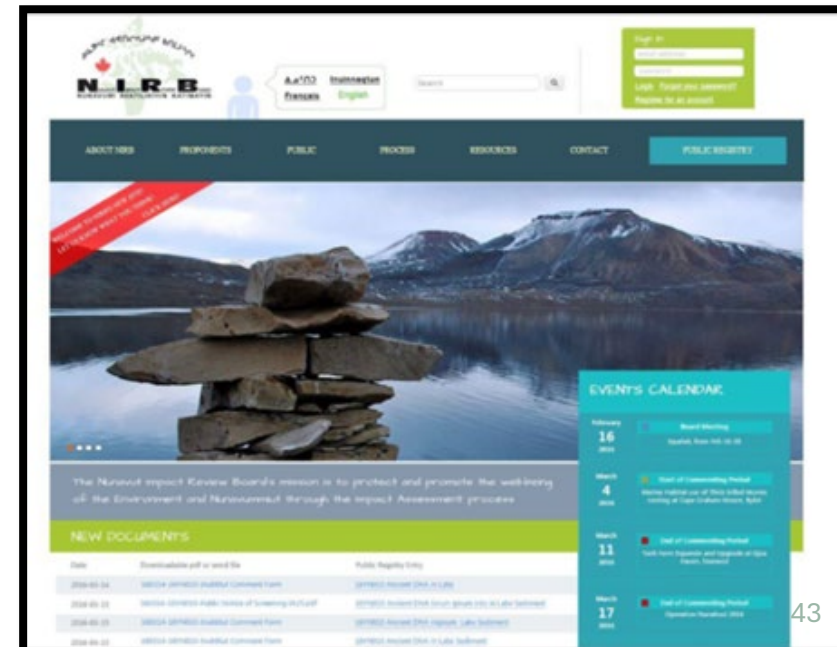
Qanuq ilitpaalliqniaqqit NIRB-kut qauyihagtainik? How can you learn more about NIRB's assessments?

Tatqiqhiut

- Aulayut havaaghat umikvighaillu

Calendar

- Active projects and deadlines





NIRB-kut Iliknit Tuhaayumayut ! NIRB Wants to Hear From You!

Qanuqtut ihumagiviuk Havauhikhaq?
What do you think about the Project?

Niplautigiyangit, apiqqutit ihumaaluutit
Comments, questions or concerns

Hup avatingnut ilaliutingit aturnaqqa ilingnut?
What environmental components are important to you?

Qanuq ihumagiyauva atuliqtaunianut ihumagiyatit haffumani Havaatigut
ilitturniaqqa nunanut, anngutikhanut, inungnullu?

What potential effects do you think this Project might have on the land, animals
and people?

Iniqtiqlugu NIRB
uqarumayarnik
apirhuutimik!

**Fill out a NIRB
comment form!**

Talvannga piyakhaq NIRB-kut Ihivriuqninnganik Next Steps in NIRB's Review

1. Iniqpiaqtumik Hivunikhanut Tainiit

- Ilaliutaunnaqqa qanuq ihumagiyamingnit uvani katimalirumik ilittuqhimagiangani hamna ihivriurningit maliktangit aktuqtaunianut atuliqtaunnaqqa ilingnut

2. Numiktauhimayut Titirainnaqhimayut Avatiliqinirnut Aktuqtauhimaningit Kiuviniiit Maliktakhait

3. Iniqpiaqhimayuq Avatiliqinirnut Aktuqtauhi maningit Kiuviniiit Maliktaqhainit

1. Final Scope List

- Will include the feedback provided at these meetings to ensure that the assessment considers impacts on what is important to you

2. Revised Draft EIS Guidelines

3. Final EIS Guidelines

Qanuqtut uqaqatiginiaqqigu NIRB-kut? How to contact NIRB?

Phone (toll-free):
Hivayaut (akiqanngittukkut):

1-866-233-3033

Fax:
Hivayaut Tittikanik Aullaktittaitaaktuk Kayumiktukut:

(867) 983-2594

Email:

Qaritauyakkut:

info@nirb.ca

Atuinnaqpagaat takugakhaq:

Nunavut Aviktuikiyit Katimayit
P.O. Titikivia 1360
Iqaluktuuttiaq, NU
X0B 0C0

Regular post:

Nunavut Impact Review Board
PO Box 1360
Cambridge Bay, NU
X0B 0C0

Closing Remarks

Quanaqqutit! Thank you!

Quanaqqutit ilauhimaqataugavit ublumi

Thank you for sharing your participation with us today