



Community Scoping/Guideline Meetings

Scoping and Environmental Impact
Statement Guidelines for the NIRB's Review
of the Grays Bay Road and Port Project
May 2025

Outline

- What is the NIRB and what do we do?
- The NIRB's impact assessment process
- Grays Bay Road and Port Project
- *Draft Scope List for the Grays Bay Road and Port Project Proposal*
- *Draft IS Guidelines for the Grays Bay Road and Port Proposal*



May 13–15, 2025

NIRB File No. 24XN038

Why is the NLRB visiting your community?

- **Present:** West Kitikmeot Resources Corp.'s Grays Bay Road and Port Project Proposal
- **Explain:** NIRB's environmental assessment (Review) of the Grays Bay Project
- **Ask:** How do you feel about the Project – will it affect you?
- **Listen:** your questions, comments, and concerns



What is the Nunavut Impact Review Board?



May 13–15, 2025

An institution of public government responsible for environmental impact assessment of proposed projects in Nunavut

Who is the NIRB?

8 board members, 1 Chairperson

Nominated by government and Inuit Organizations

23 staff members

The NIRB's Mission

To protect and promote the well being of the Environment and Nunavummiut through the impact assessment process

What does the NIRB do?

PULL REVIEW STEPS	PROponent	INIR	INAT	COMMUNITY
Phase 1: Screening & Scoping Decision				
1. Project Scoping				✓ public meeting
2. Initial community scoping meeting				
3. Draft EIS/Environmental Impact Statement (EIS)				✓ technical meeting
4. Review Draft EIS for Conformity with Guidelines				
Phase 2: Draft Environmental Impact Statement (EIS)				
5. Technical review of Draft EIS				
6. Preparation of Information Request				✓ information session
7. Preparation and submission of response to information request				✓ technical meeting
8. Public and technical review comments				
9. Public and technical information sessions				✓ public meeting
10. Technical meeting				
11. Pre-hearing Conference				
Phase 3: Final Environmental Impact Statement (EIS)				
12. Submission of Final EIS				
13. Comprehensive review of Final EIS				
14. Technical review of Final EIS				
15. Public and technical review comments				
16. Final Hearing				
17. Final Report to Minister				

Application
for project



Identify
impacts



Decide if project
should proceed or
not



Develop conditions to
minimize negative
impacts



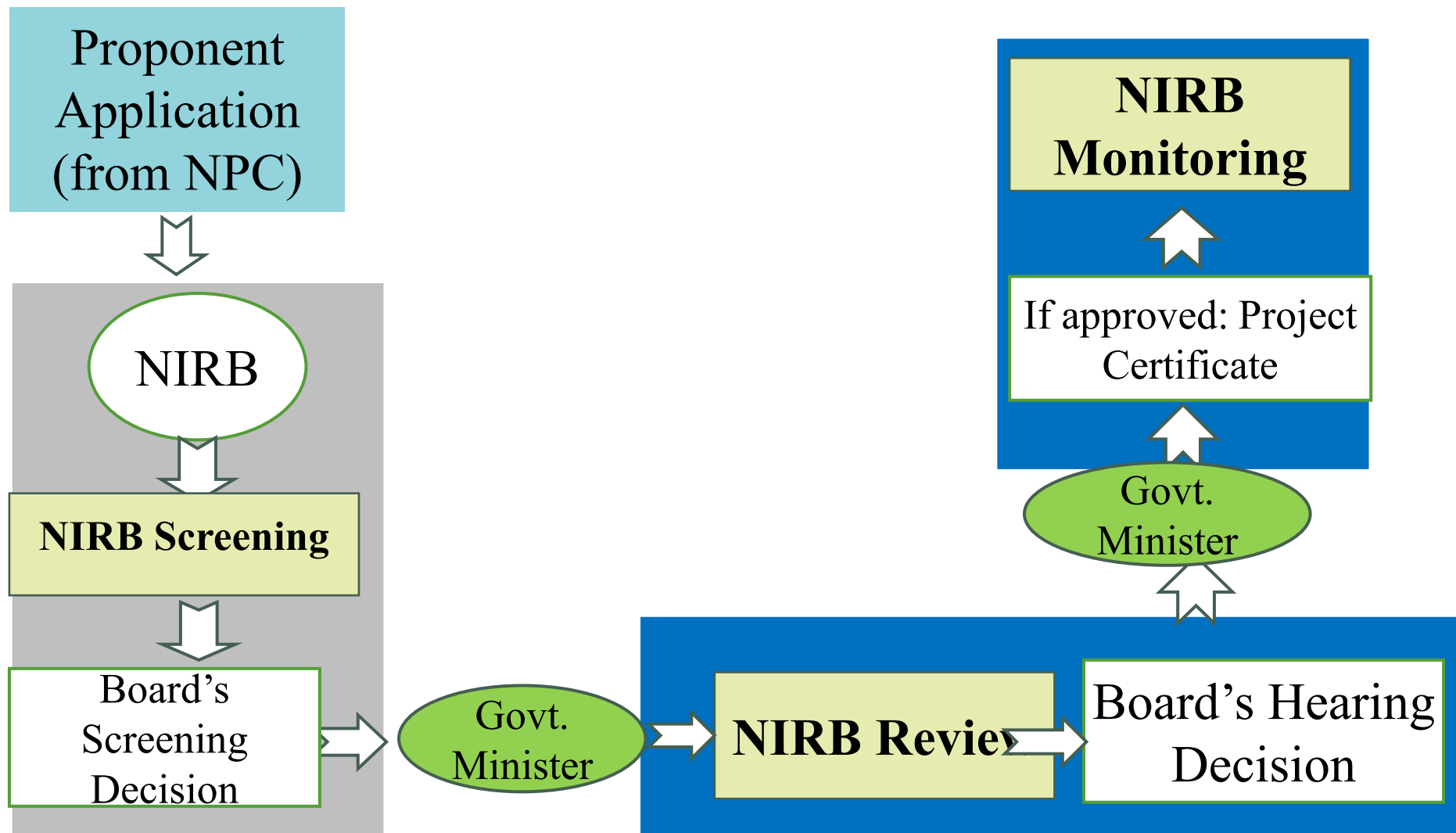
Monitor effects of
project

The NIRB's Impact Assessment Process



May 13–15, 2025

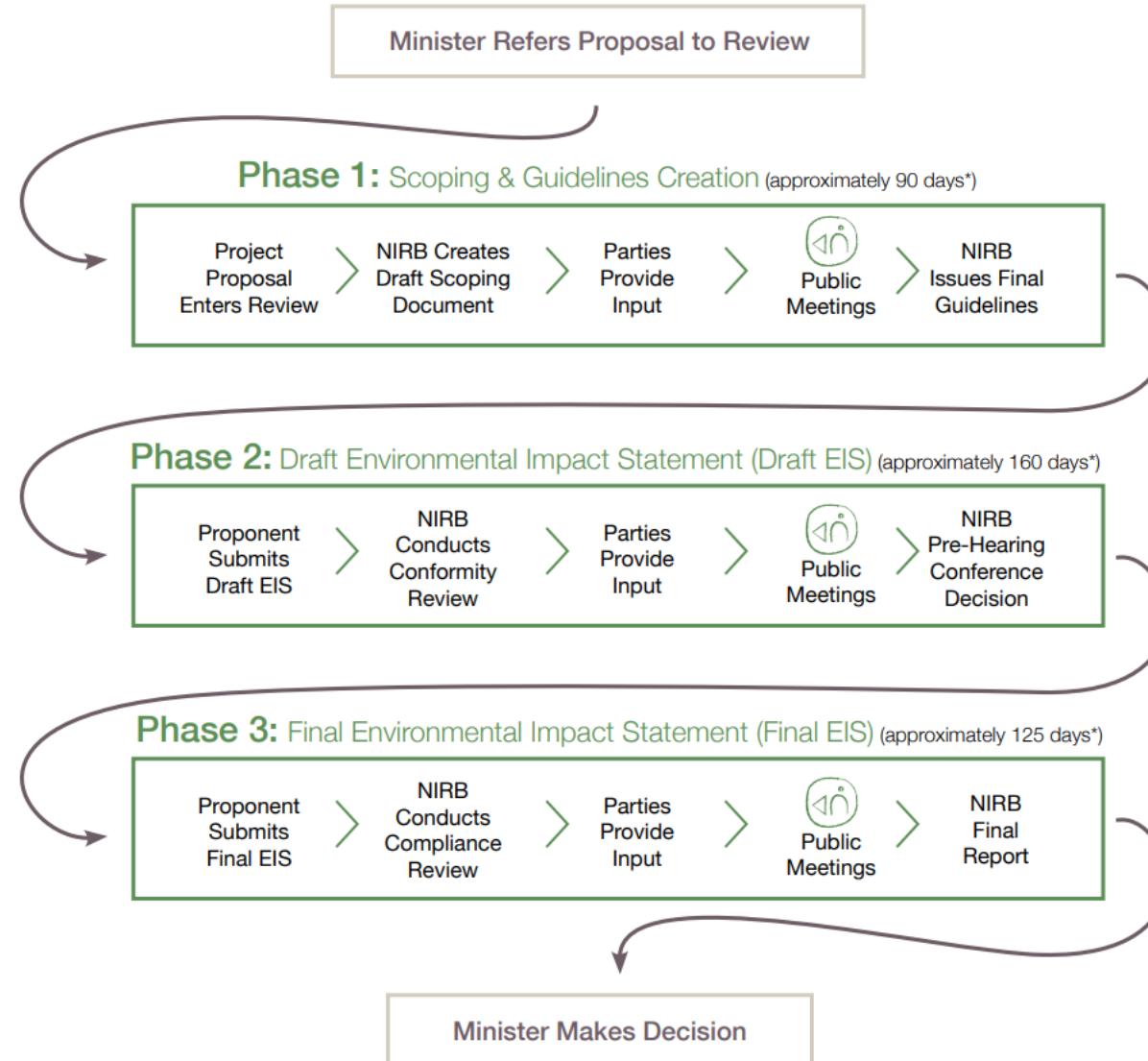
The NIRB's Impact Assessment Process



When does the NIRB do a Review?



Three Phases of the Review Process



**All timelines are approximate and can be adjusted depending on the scope of the project, number of potentially affected communities, etc.*

Review Process Overview

NIRB Screening Decision
NLCA 12.4.4.(b)

December 2024

Minister refers project
for Review

February 2025

Issue Scoping and EIS
Guideline Development



Final IS Guidelines
issued in all languages

NIRB receives DEIS

Grays Bay Road and Port Project



May 13–15, 2025

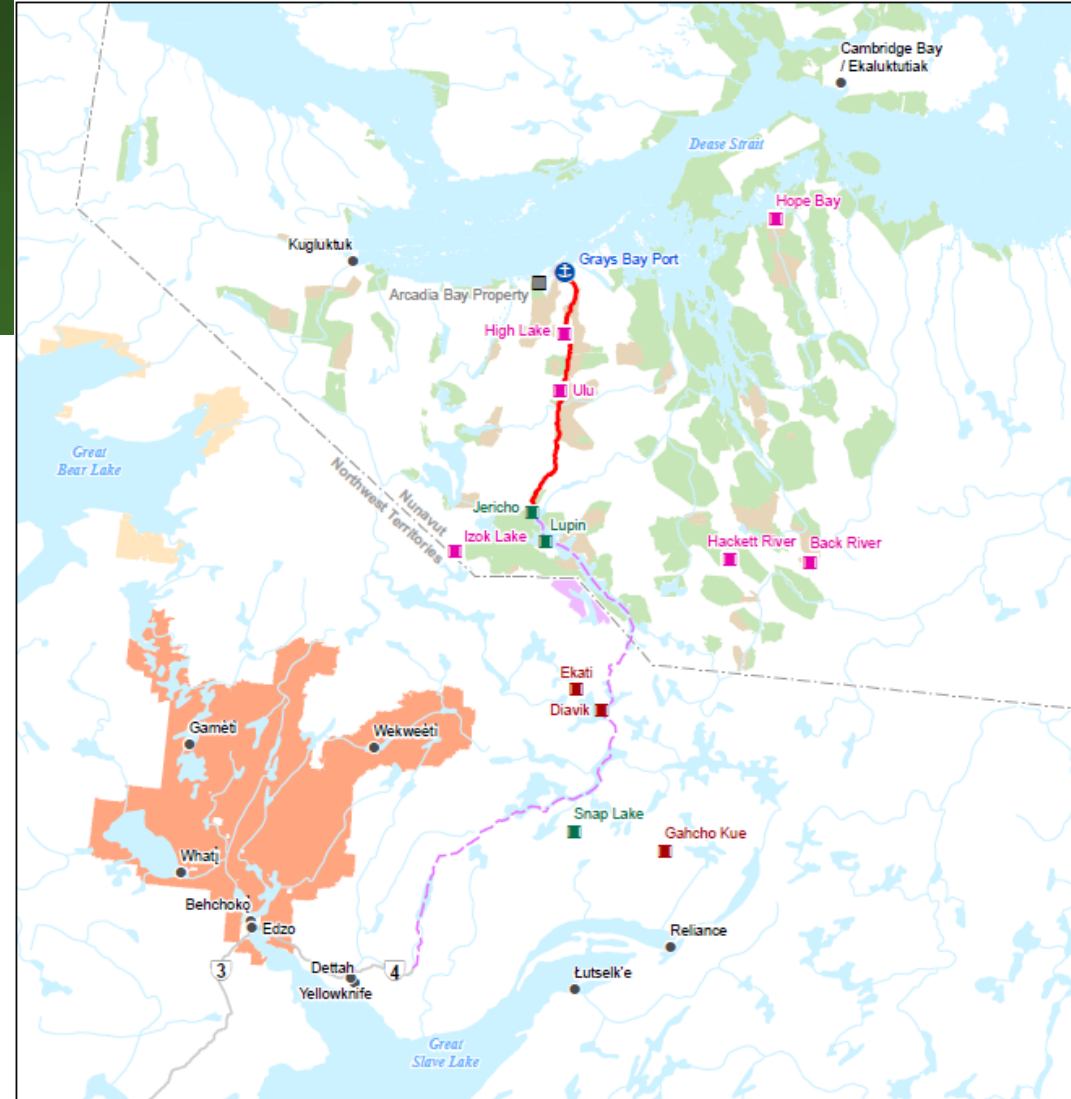
Who is the Proponent?

- West Kitikmeot Resources



Project Components

- Grays Bay Port
- All-Weather Road from the Port to Jericho Station
- Jericho Station
- Winter Road connection to Tibbet-Contwoyto Winter Road



- Grays Bay Port
- Grays Bay Road
- Arcadia Bay Property
- Advanced Mineral Exploration Site
- Operating Mine Site
- Closed Mine Site
- Community
- Major Road
- Territorial Boundary
- Tibbet to Contwoyto Winter Road

- Watercourse
- Sahtu Settlement Lands
- Tłı̨chǫ Lands
- Waterbody
- Inuit Owned Land
- Article 41
- Subsurface
- Surface Only

0 50 100 Kilometres
(At original document size of 8.5x11)
1:5,000,000

NUNAMI
NUNAMIT LIMITED

Project Location: West Kitikmeot Region
Nunavut

Client/Project: West Kitikmeot Resources Corp
Grays Bay Road and Port

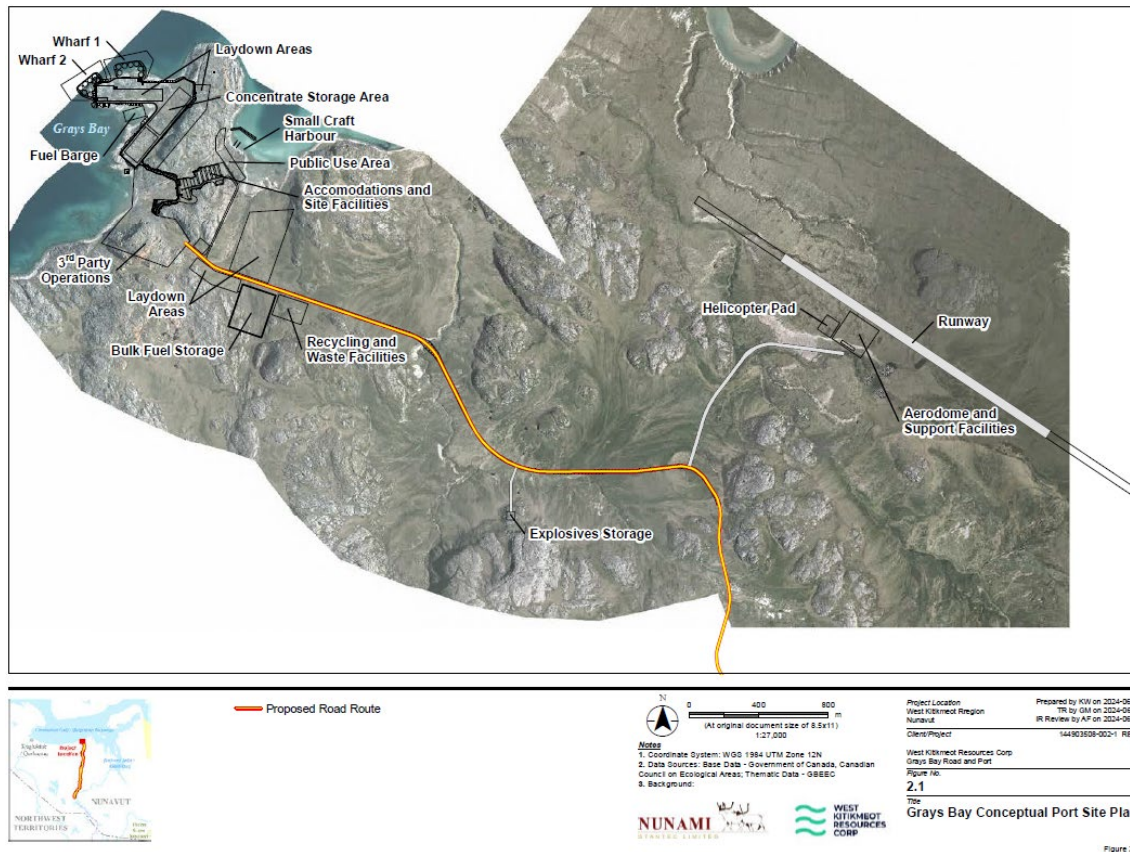
Figure No.: 1.1
Title: Grays Bay Road and Port Project Overview

Prepared by DS on 2024-05-28
TR by EB on 2024-05-28

123514868_001

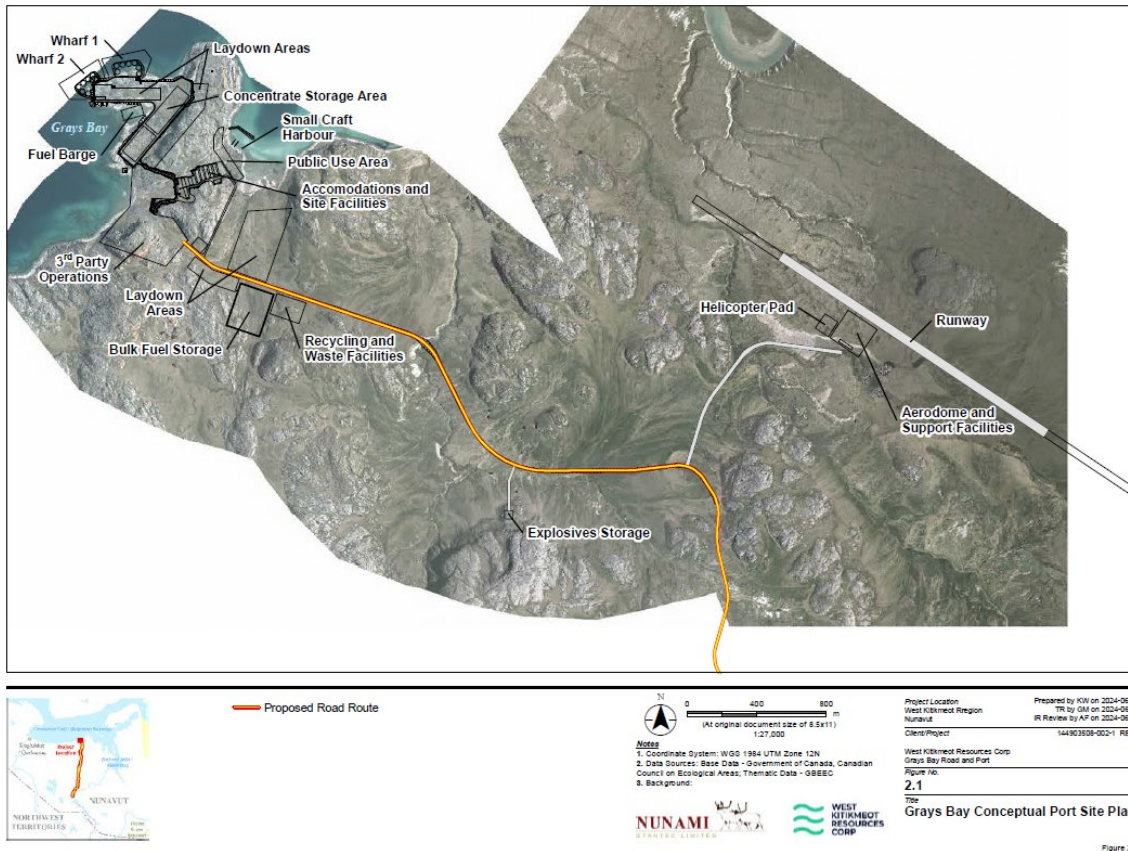
Grays Bay Port

- Open Water shipping
- Two (2) deep water wharves suitable for 100,000 deadweight tonnes ore-bulk-oil vessels
- One (1) barge berth
- Small Craft Harbour



Grays Bay Port

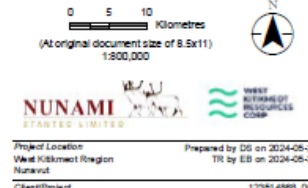
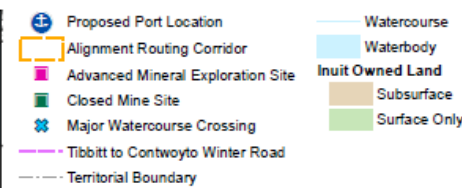
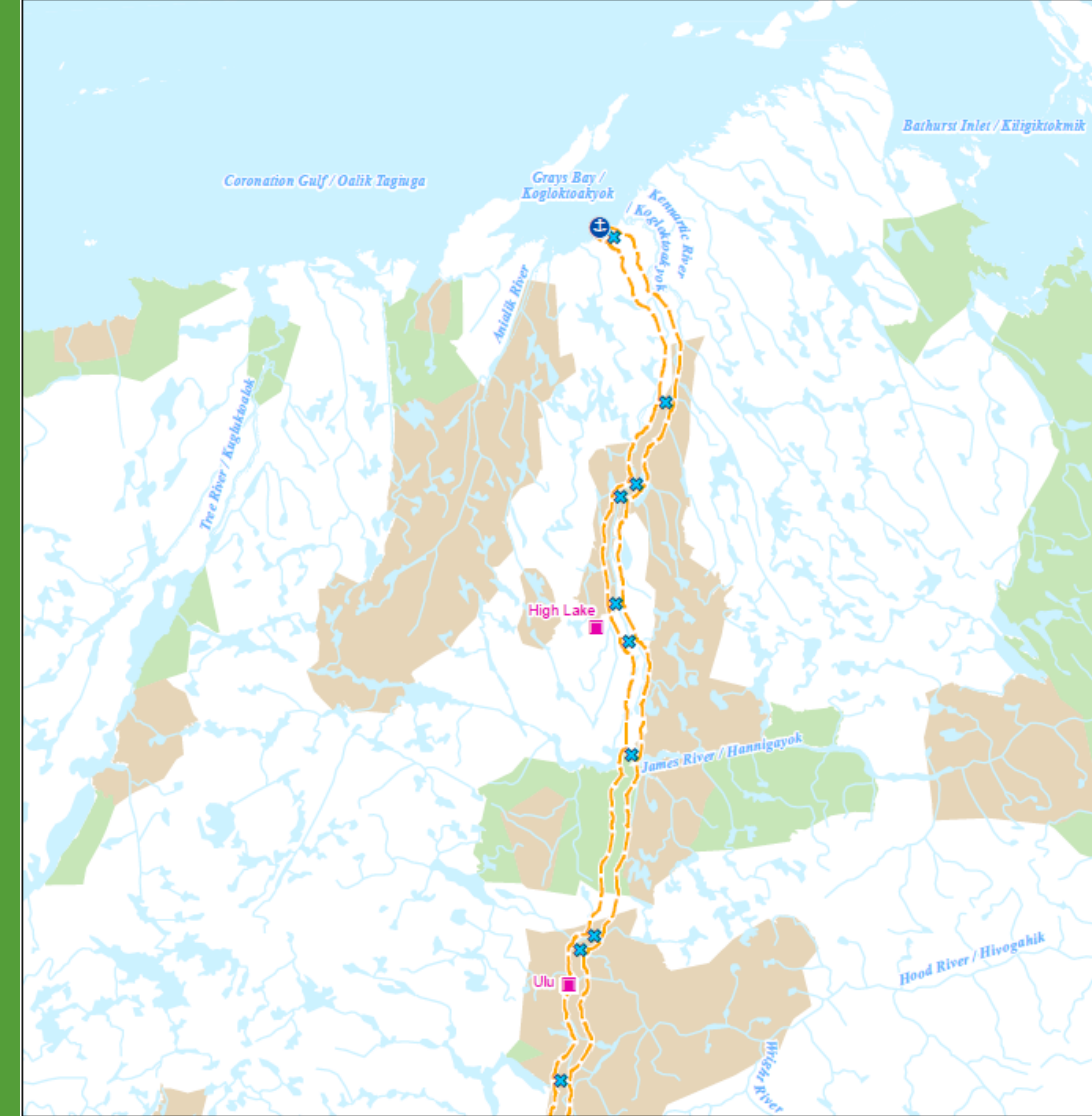
- 1,800 m airstrip
- Roads and other infrastructure
- Dredging
- Permanent accommodations for approx. 80 people with temporary accommodations for 150



Grays Bay Road

During Construction Phase

- 230 km all-season toll road
- Approx. 230 water crossings including bridges and culverts
- Est. 40 quarries and borrow areas and roads
- 4 mobile construction camps



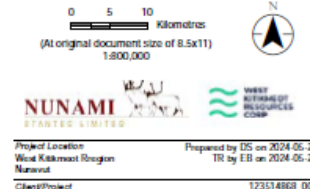
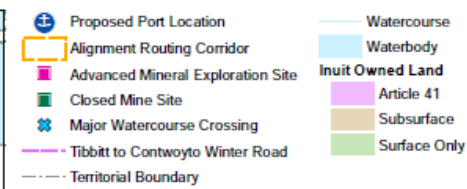
Notes
1. Coordinate System: WGS 1984 UTM Zone 12N
2. Data Sources: Government of Nunavut, ESRI, Sinteric Consulting Ltd.

NUNAMI
ESTATES LIMITED
Project Location: West Kitikmeot Region, Nunavut
Client/Project: West Kitikmeot Resources Corp, Grays Bay Road and Port
Prepared by DS on 2024-05-28
TR by ES on 2024-05-28
123514868_002
Figure No. 2.4
1 of 2
Grays Bay Road

Grays Bay Road

During operations phase

- Approximately every third quarry remaining active, including use of explosives, for aggregate production for road maintenance
- Maintenance and repair of the road and associated watercourse crossings as needed



Notes
1. Coordinate System: WGS 1984 UTM Zone 12N
2. Data Sources: Government of Nunavut, ESRI, Stantec Consulting Ltd.

NUNAMI
STARTER LIMITED

Project Location: West Kitikmeot Region, Nunavut
Client/Project: West Kitikmeot Resources Corp, Grays Bay Road and Port

Figure No. 2.4
2 of 2
Grays Bay Road

Jericho Station



- Camp
- Parking, refueling areas
- Tank farm (20 M litres)
- Potential use of Jericho airstrip
- Staging area for winter road cargo

Winter Road connection to Tibbet-Contwoyto Winter Road



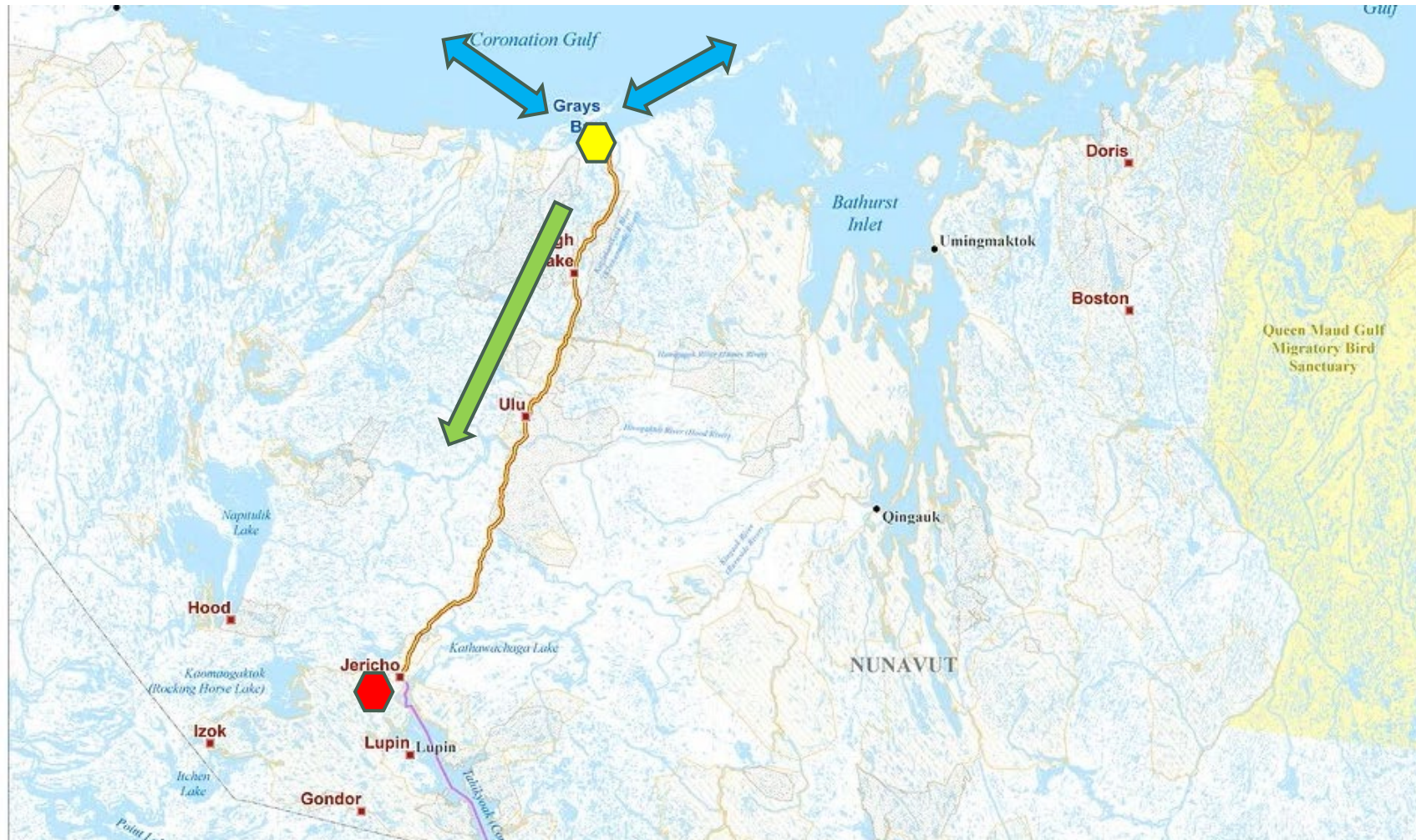
- Annual construction of a winter road to connect the Jericho Mine to the ice road at the Nunavut/Northwest Territories

Project Schedule

- Approximately 5 years (2029-2034)
 - Pre-Construction
 - Construction
- 75-year design life
- Operations



Mobilization and Shipping



Mobilization and Shipping



What is Scoping?



May 13–15, 2025

What is Scoping?

For NIRB, a SCOPE is a list of all parts of the project,
and the parts of the environment that might be
affected by the project

A “SCOPE” is a tool that helps us see better

Scoping helps us see better what people think about the project, and what parts of the environment are important to you.



Changes to the environment

Air Quality



Marine life



Ground stability



Water



Birds



Wildlife



Freshwater life

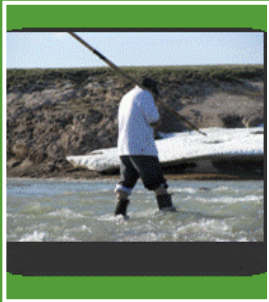


Vegetation



Changes to communities

Land and
Resources Use



Food
Security



Community infrastructure
and public services



Livelihood



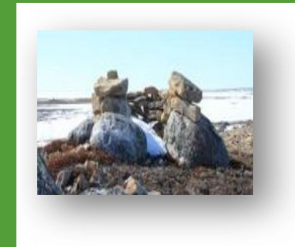
Employment



Education and
Training



Archaeology



Cumulative Impacts

Transboundary Impacts



Scoping of the Grays Bay Project



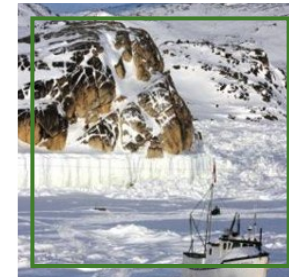
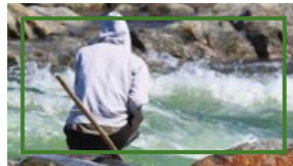
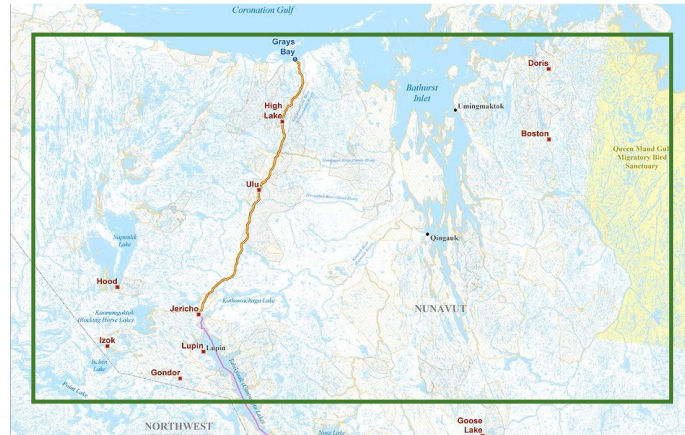
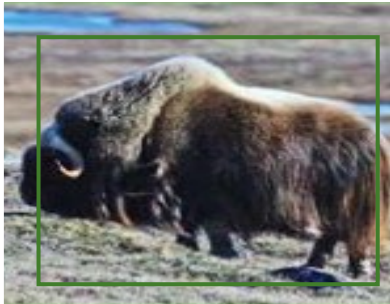
May 13–15, 2025

Scoping List

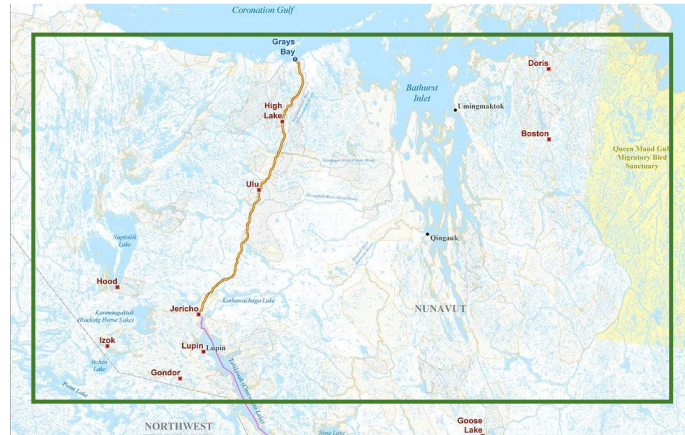
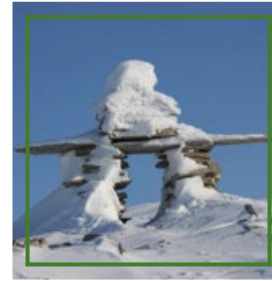
- All parts of the Project and activities for the whole time
- Physical and people environments
 - Parts of the environment that are important
- Alternative ways to do the project



Ecosystemic Impacts



Socio-Economic Impacts



Other Factors



Cumulative effects



Climate Change



Transboundary effects



Draft Impact Statement Guidelines for the Grays Bay Road and Port Proposal

The Guidelines instruct the Proponent what NIRB expects to appear in the Environmental Impact Statement and how it is presented.

Project Details

Project Phases

- When are things going to be done?

Project alternatives

- Are there other ways of doing it?

Accidents and Malfunctions

Project Environment and Impact Assessment

- Description of the Environment and Baseline information
 - What does the environment look like now?
- Biophysical Environment and Impact Assessment
- Socio-Economic Environment and Impact Assessment

Project Environment and Impact Assessment

- Public Engagement
- Inuit Qaujimajatuqangit, Indigenous Knowledge, and Community Knowledge

Environmental Management System

- Environmental management plan
- Environmental protection plan
- Monitoring and mitigation plans
 - Follow-up and adaptive management plan
 - Ecosystemic environmental plans
 - Socio-economic environmental plans

How can you learn more about NIRB's assessments?

Public Registry

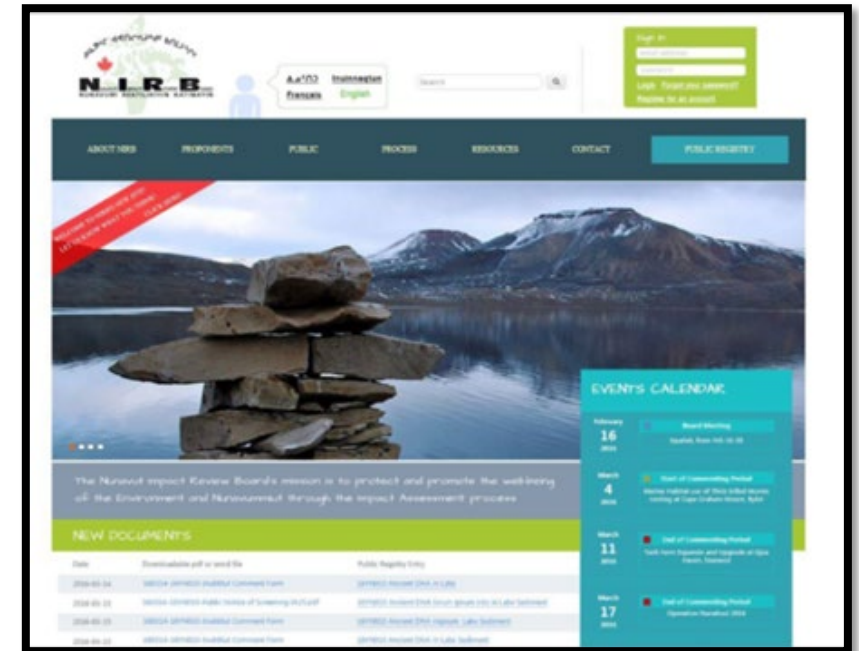
- Search for project or document
- Register to receive notifications

The screenshot displays the 'SEARCH the PUBLIC REGISTRY' web application. It features a 'Keyword Search' section with radio buttons for 'Search Projects' (selected) and 'Search Documents', and a text input field. Below this is an 'Advanced Search' section with three expandable panels: 'Project Location' (listing Transboundary, Kivalliq, South Baffin, Kitikmeot, and North Baffin), 'Project Type' (listing various project categories like Access, Infrastructure, and Development), and 'Assessment Status' (listing screening and review stages). At the bottom left of the search filters are 'Select All' and 'Deselect All' checkboxes. On the right side, there is a 'Map Search' section showing a map of Nunavut with a search area highlighted. Above the map is a 'Get Search Area' button. At the top right, a 'Are you a registered user?' message encourages registration or provides a contact link.

How can you learn more about NIRB's assessments?

Calendar

- Active projects and deadlines





- Fill out a NIRB
comment form!**

Next Steps in NIRB's Review

1. Final Scope List

- Will include the feedback provided at these meetings to ensure that the assessment considers impacts on what is important to you

2. Revised Draft EIS Guidelines

3. Final EIS Guidelines

How to contact NIRB?

Phone (toll-free):

1-866-233-3033

Fax:

(867) 983-2594

Email:

info@nirb.ca

Regular post:

Nunavut Impact Review Board
PO Box 1360
Cambridge Bay, NU
X0B 0C0

Closing Remarks

Thank you!

We appreciate your sharing with us today!