

## ᐃᓂᑦ Dorset



7

## ᐃᓂᑦᐃᓂᑦ Inuit Sites



8

## ᐃᓄᑦᑲᑦᐱᐱᓂᑦ Inuit Sites



9

## ᐃᓄᑦᑲᑦᐱᐱᓂᑦ Inuit Sites



Photo: Tim Rast



Photo: Tim Rast



Photo: Tim Rast

10



Δᑦᑕᑦᓂᓐᓂᑦ ᐱᑕᓂᐱᑦ

## ARCHAEOLOGICAL PROGRAMS

11

## ᑦᓂᐅᐱᓐᓂᑦ Survey

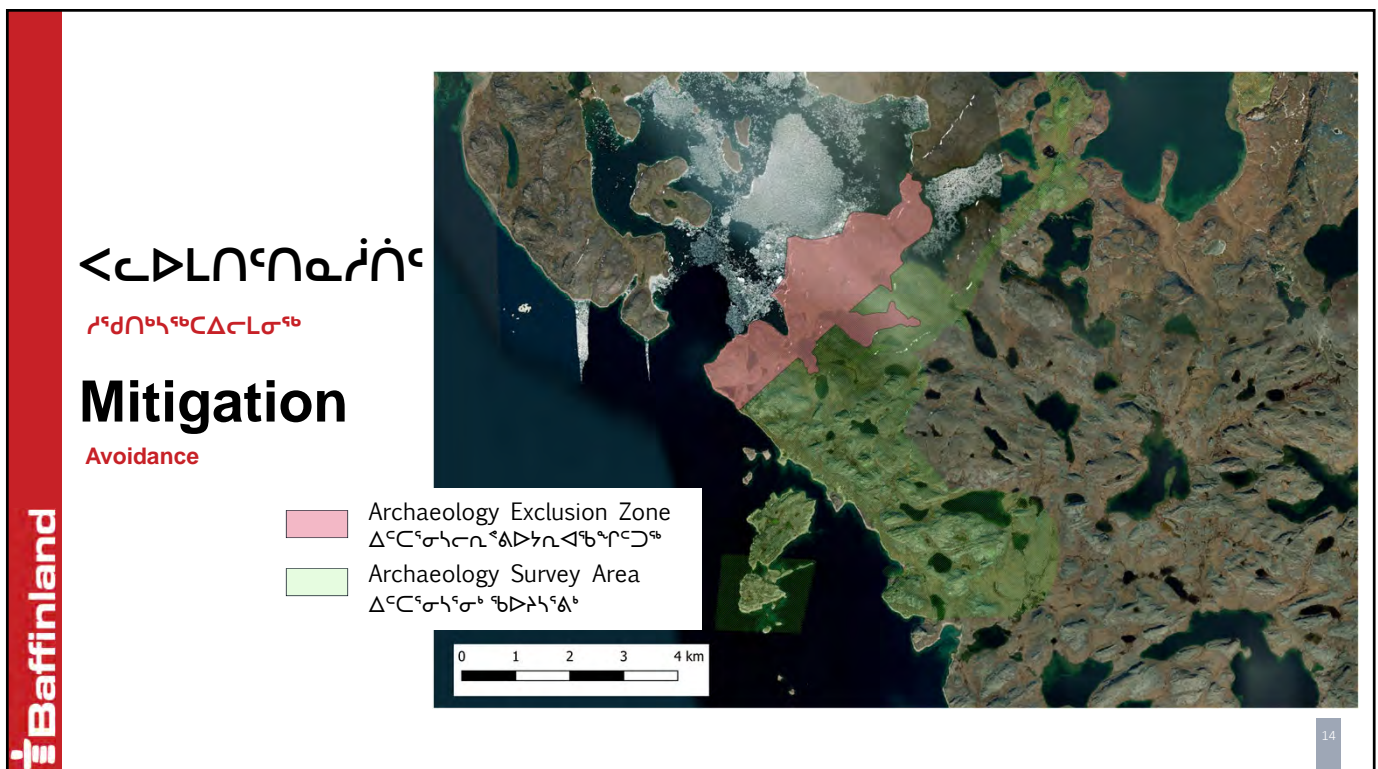
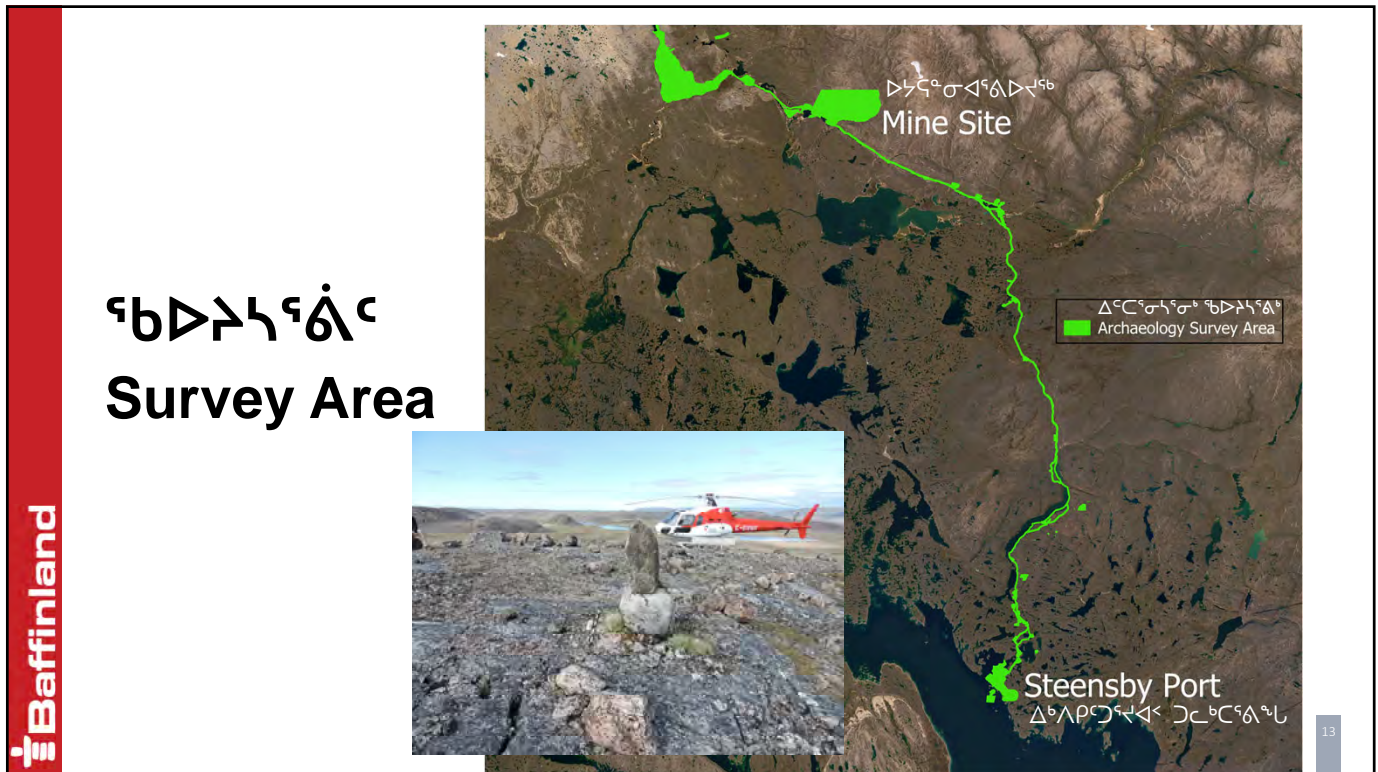


Photo: Tim Rast



Photo: K. Pehnanen

12





ከጋራ ሆኖ ለሚገኙት ሁሉም ጥያቄዎች ማስተካከል ይቻላል፡፡

Photo: Len White



ኢኮኖሚክስ (ፋኖኮኖሚክስ ስኬት ስኬት ስኬት)

A group of researchers are working in a field, likely collecting samples for the study. They are using various equipment, including buckets, bags, and a yellow frame, to collect samples from the ground. The terrain is rocky and sparsely vegetated, typical of a coastal or island environment.



Photo: Lori White

Photo: Lori White

**Baffinland**

- [illegible]



## Policy

19

**Baffinland**

**▷▷<sup>sb</sup> 2023 - 2024      Winter 2023 - 2024**

- [illegible]

ᐱᐅ 31, 2024      March 31, 2024

- [illegible]





**Spring 2024**

- [illegible]



INUIT ENGILGAAGNITTANIK TIGUMIAKTIKHANIK  
INUIT HERITAGE TRUST INC

23

**Summer 2024**

- ለጥጥር ለፍርድ ስርዓት ለሚገባው ማንኛውም ሰነድ ማረጋገጫ ማስፈጸም ይገባል፡፡
- ለፍርድ ስርዓት ለሚገባው ማንኛውም ሰነድ ማረጋገጫ ማስፈጸም ይገባል፡፡
- ለፍርድ ስርዓት ለሚገባው ማንኛውም ሰነድ ማረጋገጫ ማስፈጸም ይገባል፡፡
- ለፍርድ ስርዓት ለሚገባው ማንኛውም ሰነድ ማረጋገጫ ማስፈጸም ይገባል፡፡
- Permitted Archaeology work may proceed
- Sites cannot be excavated in the same year that they are discovered
- The Project Archaeologist is responsible for fulfilling the conditions of the Permit, including all analysis, report preparation, and submission of artifacts by March 31<sup>st</sup> of the following year



Photo: Tim Ras

24

2024 ᐱᕐᕐᕐᕐᕐ

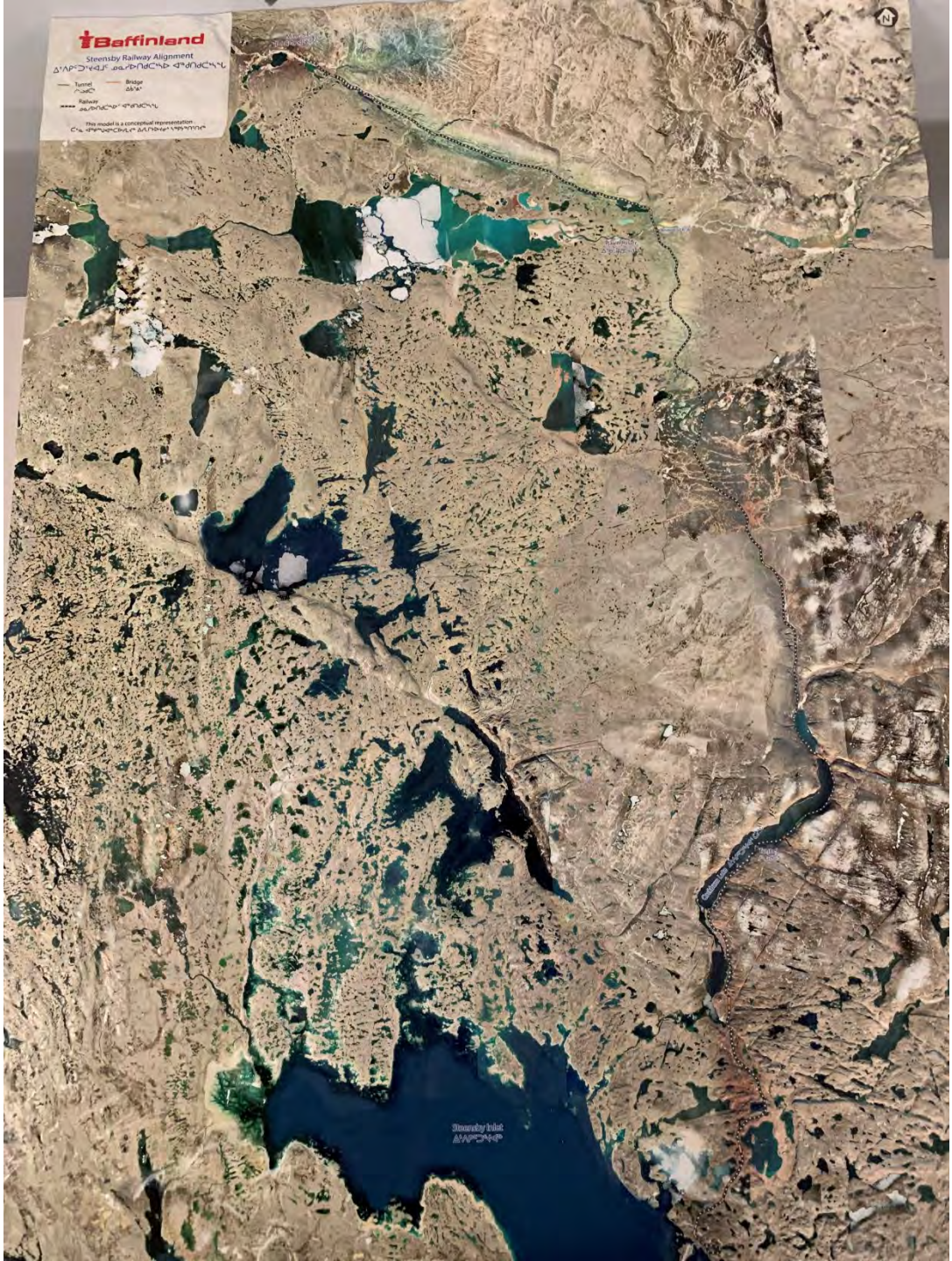
2024 APPLICATION



## APPENDIX C

### 3D Models

# Steensby Railway Alignment



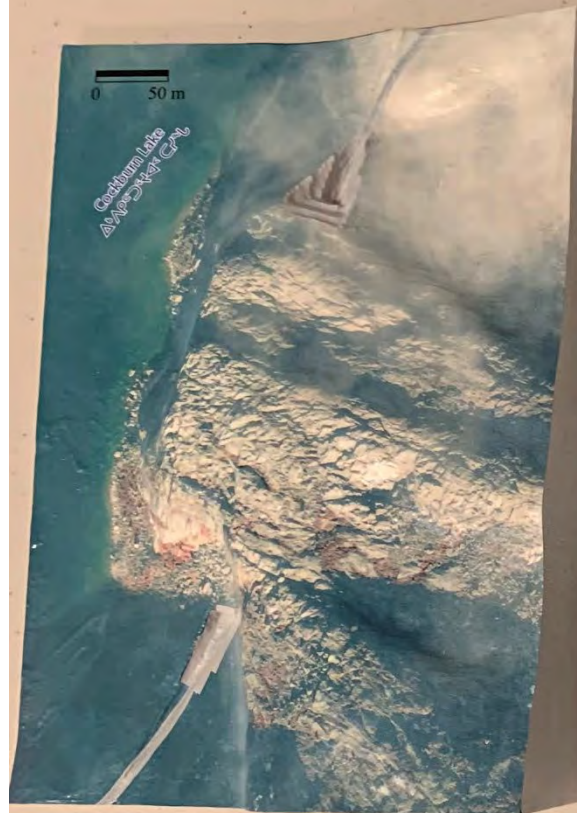


# Steensby Port





1. Tunnel
2. Bridge
3. Land user crossing



## APPENDIX D

### MAP BOOK



Δ<sup>b</sup> Λ ρ<sup>c</sup> Ϸ<sup>ε</sup> Ϻ<sup>ε</sup> ϻ<sup>b</sup>

STEENSBY

ᐃᓄᓐ ᐱᓕᓂᐱᓐᓴᓐᓴᓐ  
Mary River Project



**Baffinland**



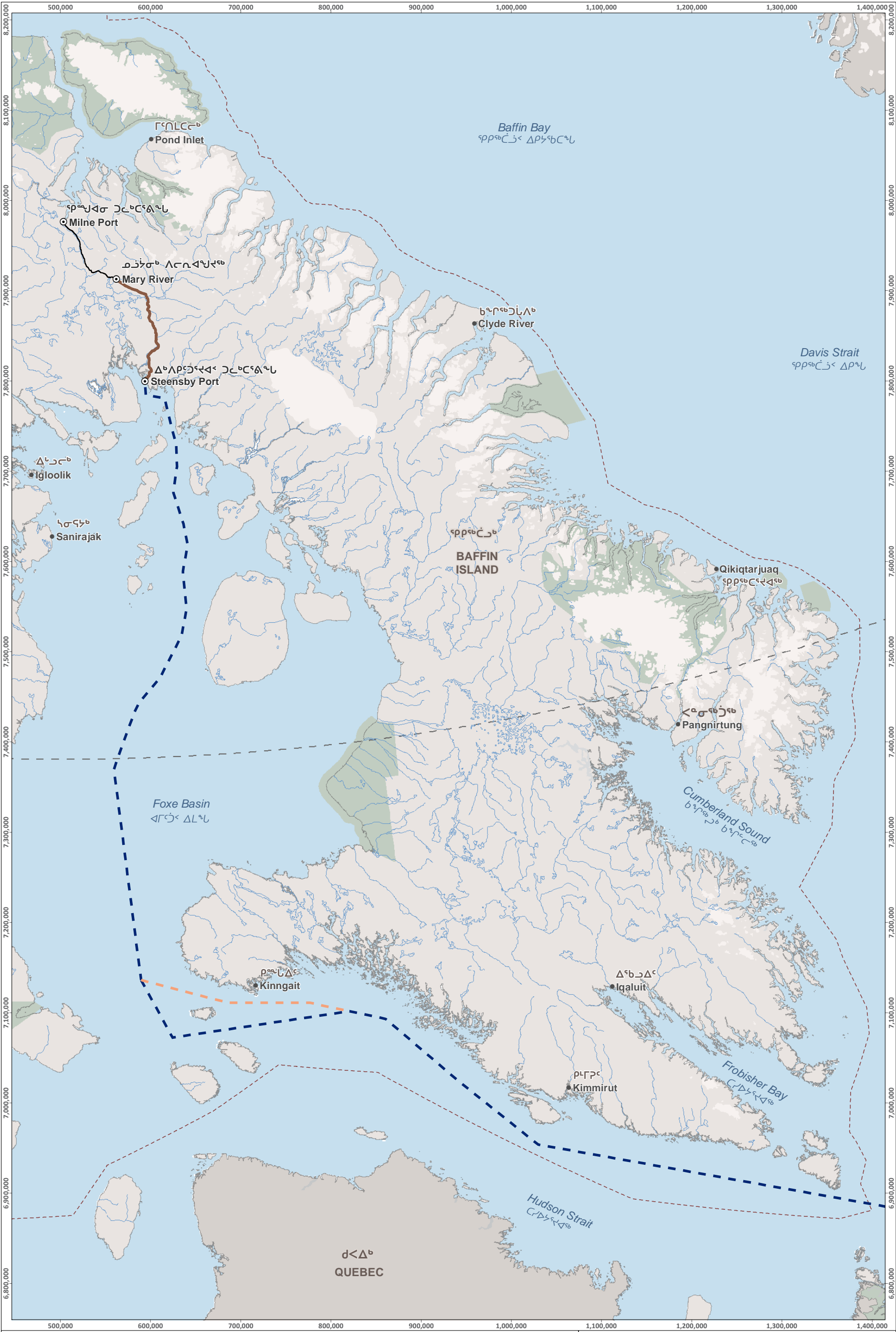
# Table of Contents

በበፍፍሪ ሊፈጠር ይችላል

Figure 1-1	Southern Shipping Route ᑭᓴᐱᓪᓂ ᓄᓇᐱᓚᓂᓪᓃᓂ ᓄᓇᐱᓚᓂᓪᓃᓂ
Figure 1-2	Community Distance to Shipping Route ᓄᓇᐱᓚᓂ ᓄᓇᐱᓚᓂ ᓄᓇᐱᓚᓂᓪᓃᓂ ᓄᓇᐱᓚᓂ
Figure 2-1	Mine Site Layout ᓄᓇᐱᓚᓂᓪᓃᓂ ᓄᓇᐱᓚᓂᓪᓃᓂ ᓄᓇᐱᓚᓂᓪᓃᓂ
Figure 2-2	Mine Site Layout ᓄᓇᐱᓚᓂᓪᓃᓂ ᓄᓇᐱᓚᓂᓪᓃᓂ ᓄᓇᐱᓚᓂᓪᓃᓂ
Figure 3-1	Steensby Port Infrastructure ᓄᓇᐱᓚᓂᓪᓃᓂ ᓄᓇᐱᓚᓂᓪᓃᓂ ᓄᓇᐱᓚᓂᓪᓃᓂ
Figure 4	Southern Corridor Overview ᓄᓇᐱᓚᓂᓪᓃᓂ ᓄᓇᐱᓚᓂᓪᓃᓂ
Figure 5-1	Planned Caribou Crossing along the Steensby Railway ᓄᓇᐱᓚᓂᓪᓃᓂ ᓄᓇᐱᓚᓂᓪᓃᓂ ᓄᓇᐱᓚᓂᓪᓃᓂ
Figure 5-2	Planned Land User Crossing along the Steensby Railway ᓄᓇᐱᓚᓂᓪᓃᓂ ᓄᓇᐱᓚᓂᓪᓃᓂ ᓄᓇᐱᓚᓂᓪᓃᓂ



SAVED: C:\Users\skatie.mcgovern\Documents\4 - Maps\Engagements\Workshops\2310\_ Steensby Map Package\1\_ Map Booklet\BIM\_ Fig 1-1 Southern Shipping Overview\_ Bilingual.mxd, 15-Nov-23



LEGEND ᓄᓇᓂᓄᓐᓐ ᐅᓂᓐᓐᓐᓐ

- Project Facility Location
- ᐱᓕᓕᓐᓐᓐᓐ ᐃᓕᓐᓐᓐᓐ ᐃᓕᓐᓐᓐᓐ ᐃᓕᓐᓐᓐᓐ
- Milne Inlet Tote Road
- ᓐᓐᓐᓐᓐᓐ ᐃᓕᓐᓐᓐᓐ
- Steensby Railway
- ᐃᓐᓐᓐᓐᓐᓐᓐ ᓄᓇᓐᓐᓐᓐᓐ ᐃᓕᓐᓐᓐᓐ
- Nunavut Settlement Area
- ᓄᓇᓐᓐ ᓄᓇᓐᓐᓐᓐᓐᓐ

- Proposed Southern Transportation Corridor
- ᓐᓐᓐᓐᓐᓐ ᐃᓕᓐᓐᓐᓐ ᐃᓕᓐᓐᓐᓐ
- Proposed Alternative Transportation Route
- ᓐᓐᓐᓐᓐᓐ ᐃᓕᓐᓐᓐᓐ ᐃᓕᓐᓐᓐᓐ
- Federal Protected Areas
- ᓐᓐᓐᓐᓐᓐ ᓐᓐᓐᓐᓐᓐ

ᓄᓇᓐᓐ ᐃᓐᓐᓐᓐᓐ

MARY RIVER PROJECT

ᓐᓐᓐᓐᓐᓐ ᐃᓐᓐᓐᓐᓐ ᐃᓐᓐᓐᓐ  
Southern Shipping Route

Projection: NAD 1983 UTM ZONE 17N.  
Base Map: © King's Printer for Ontario, 2023.

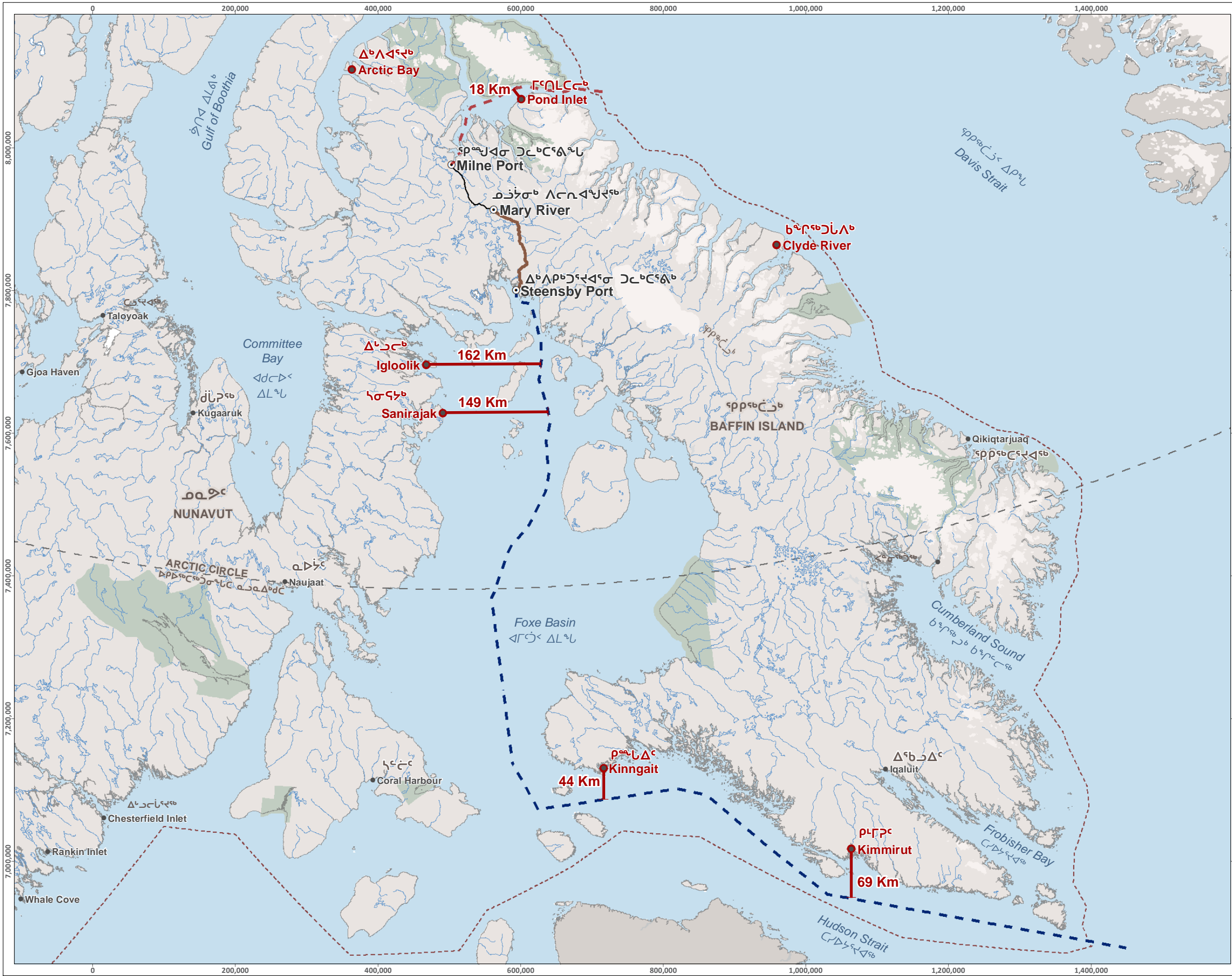
0 30 60 120 km  
Scale 1:4,000,000



ᓐᓐᓐᓐᓐᓐ ᐃᓐᓐᓐᓐ  
FIGURE

1-1

SAVED: C:\Users\Katie.mcguire\Documents\4 - Maps\Engagements\Workshops\2310\_ Steensby Map Package\1\_Map Booklet\BIM\_Fig 1-2 Shipping Distances\_Bilingual.mxd; 15-Nov-23



LEGEND ᓄᓇᓗᓗᓐ ᐅᓂᓂᓐᓴᓐ

- Milne Inlet Tote Road  
ᓴᓴᓴᓴᓴᓴ ᐱᓐᐅᓴᓴᓴ
- Shipping Route  
ᐅᓴᓴᓴᓴᓴ ᐅᓴᓂᓂᓴᓴᓴᓴ ᐱᓂᓴᓴ
- Proposed Southern Transportation Corridor  
ᓂᓴᓴᓴᓴᓴᓴ ᐅᓴᓴᓴᓴᓴ ᐱᓂᓴᓴ
- Steensby Railway  
ᐱᓂᓴᓴᓴᓴᓴᓴ ᓄᓇᓴᓴᓴᓴᓴᓴ ᐱᓂᓴᓴᓴ
- Nunavut Settlement Area  
ᓄᓇᓴᓴ ᓄᓇᓴᓴᓴᓴᓴᓴᓴᓴ
- Federal Protected Areas  
ᓴᓴᓴᓴᓴᓴᓴ ᓴᓴᓴᓴᓴᓴᓴ

ᓄᓴᓴᓴ ᐅᓂᓂᓴᓴᓴᓴ MARY RIVER PROJECT

ᓄᓇᓴᓴ ᐅᓴᓴᓴᓴᓴᓴ ᐅᓴᓴᓴᓴᓴᓴ ᐱᓂᓴᓴᓴ  
Community Distance to Shipping Route

Projection: NAD 1983 UTM ZONE 17N.  
Base Map: © 2023 Digital Globe, Inc.  
Imagery and Infrastructure are representative  
as of July 2023.

0 40 80 160 km  
Scale 1:5,500,000

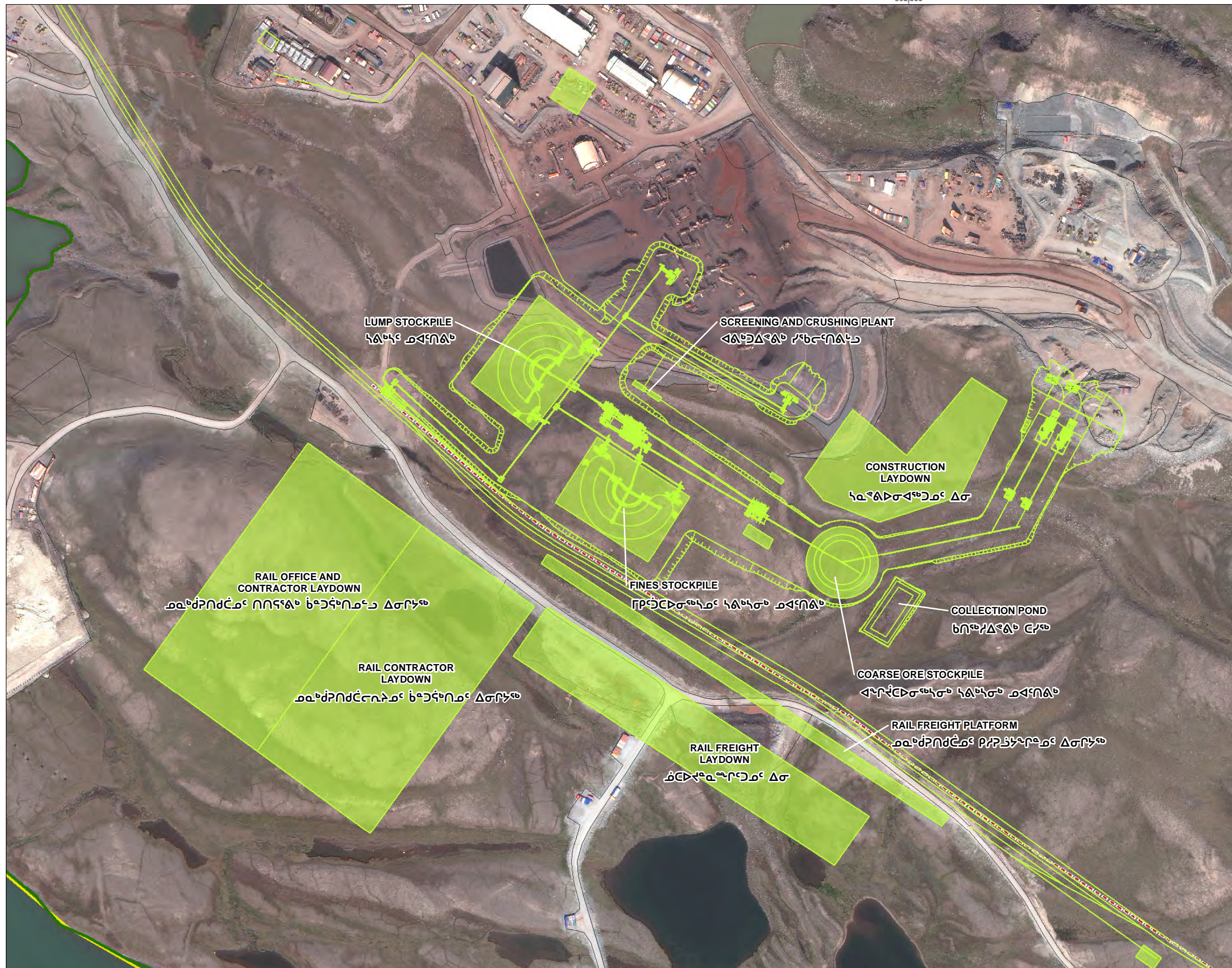
ᓴᓴᓴᓴᓴᓴᓴᓴ  
FIGURE

1-2














LEGEND  $\Delta$   $\nabla$   $\square$   $\circ$   $\bullet$

-  Steensby Railway  
 ስቴንስቢ ዳራ ማህልጃ ማህልጃ ማህልጃ  
 Current Infrastructure  
 ስቴንስቢ ዳራ ማህልጃ ማህልጃ ማህልጃ  
 Proposed Infrastructure  
 ስቴንስቢ ዳራ ማህልጃ ማህልጃ ማህልጃ  
 Project Development Area  
 ስቴንስቢ ዳራ ማህልጃ ማህልጃ ማህልጃ  
 Commercial Lease Boundary  
 ስቴንስቢ ዳራ ማህልጃ ማህልጃ ማህልጃ

ᐃᓴᓂ ᐅᕈᑲᓯᐅᕐᓇ	MARY RIVER PROJECT
-------------	--------------------

**ᐃᓴᑦᓂᐱᑦᐱᑦ ᑦᐃᓂᐱᑦᓴᓂᓴᓂ**  
**Mine Site Layout**

Projection: NAD 1983 UTM ZONE 17N.  
Base Map: © 2023 Digital Globe, Inc.  
Imagery and Infrastructure are representative  
as of July 2023.

0 35 70 140 Meters  
Scale 1:5,000

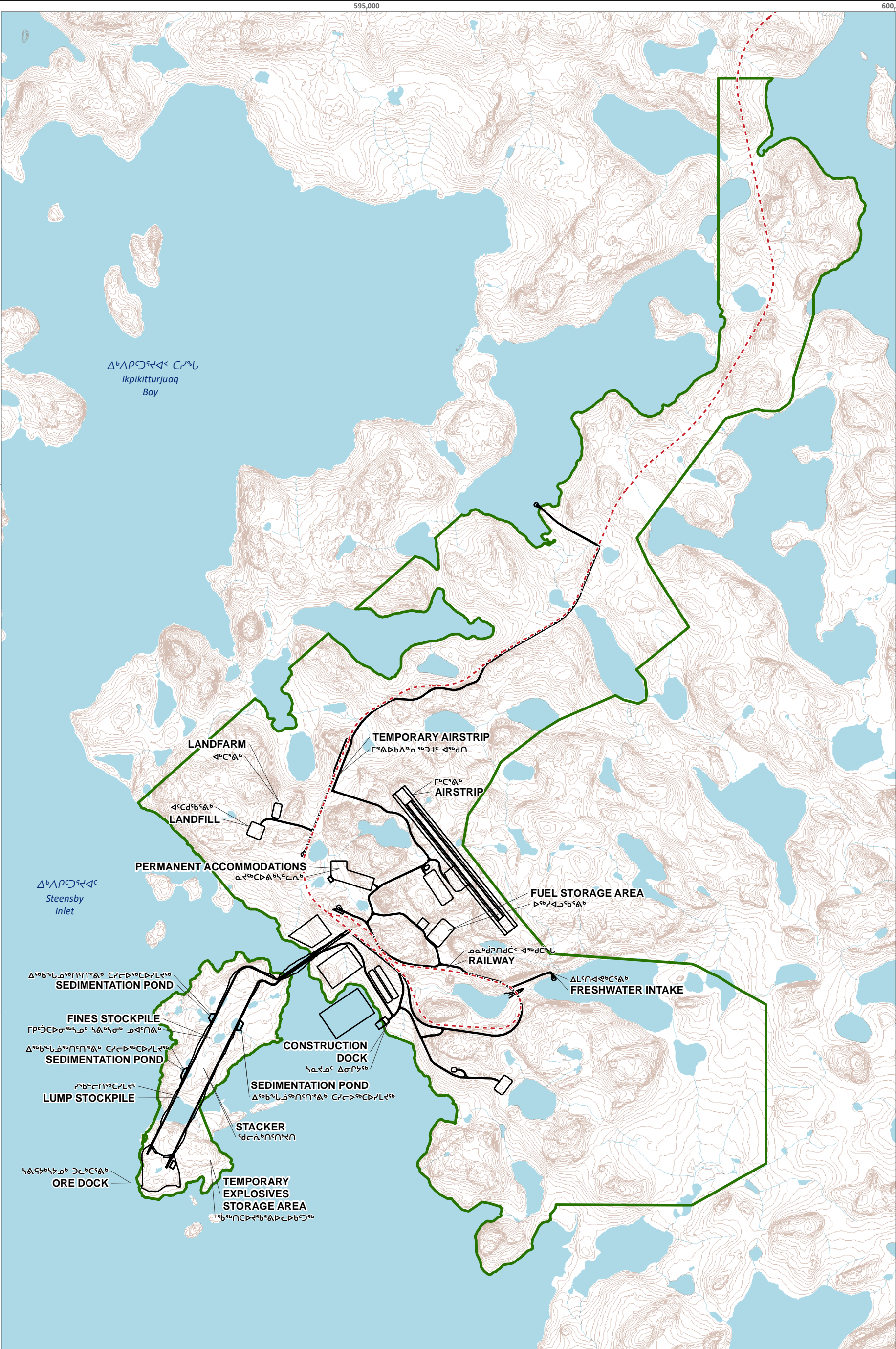


**FIGURE**

2-2



SAVED: C:\Users\skalia\mydocuments\4 - Maps\Engagements\Workshops\2310\_ Steensby Port Infrastructure\_Bilingual.mxd, 16-Nov-23



LEGEND

Contour (20 m Interval)

Steensby Railway

Project Development Area

Preliminary Infrastructure

Steensby Railway

Project Development Area

Preliminary Infrastructure

Steensby Railway

Project Development Area

Preliminary Infrastructure

MARY RIVER PROJECT

Steensby Port Infrastructure

Projection: NAD 1983 UTM ZONE 17N.  
Base Map: © King's Printer for Ontario, 2023.

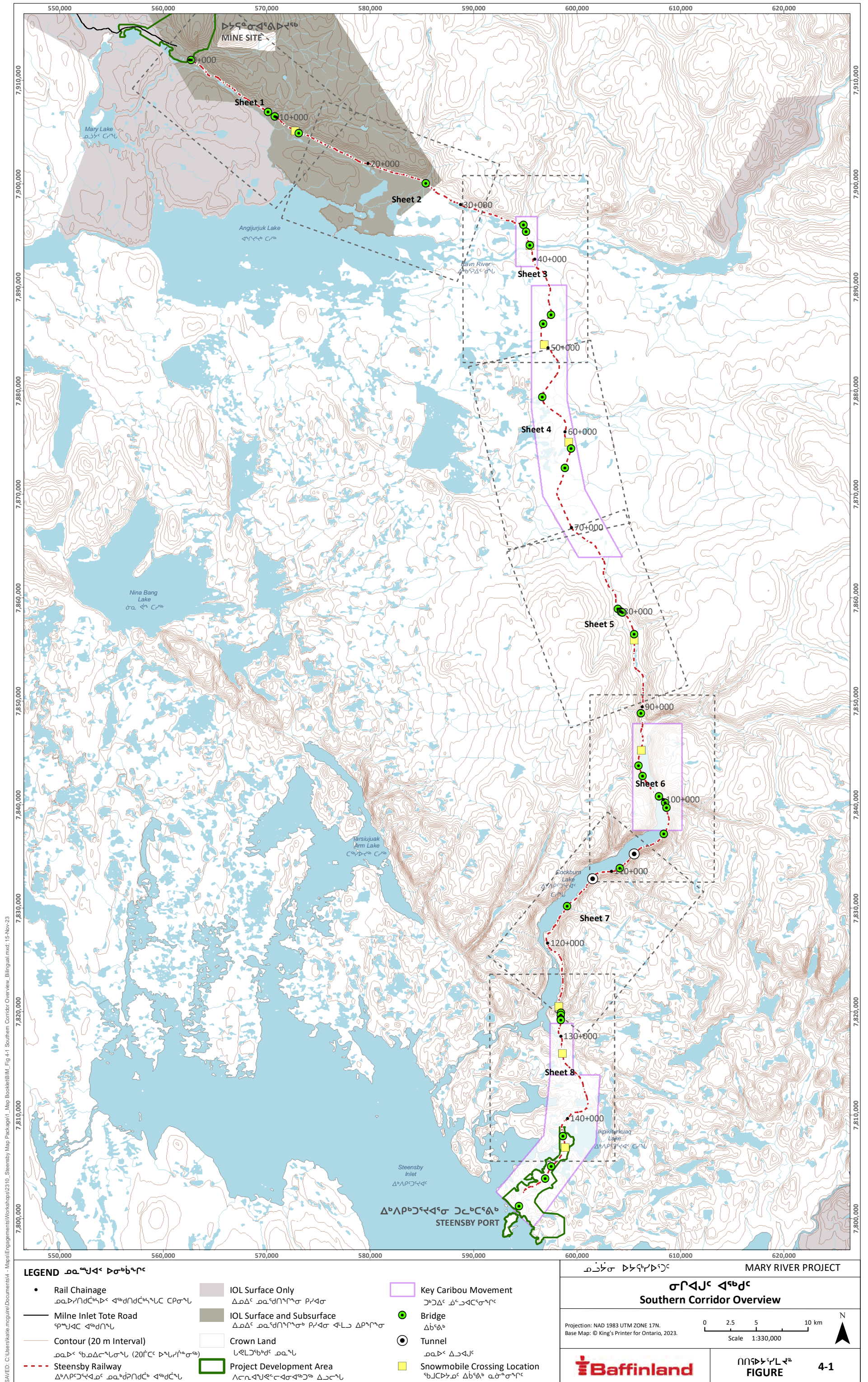
0 125 250 500 750 1,000 Meters  
Scale 1:35,000

N

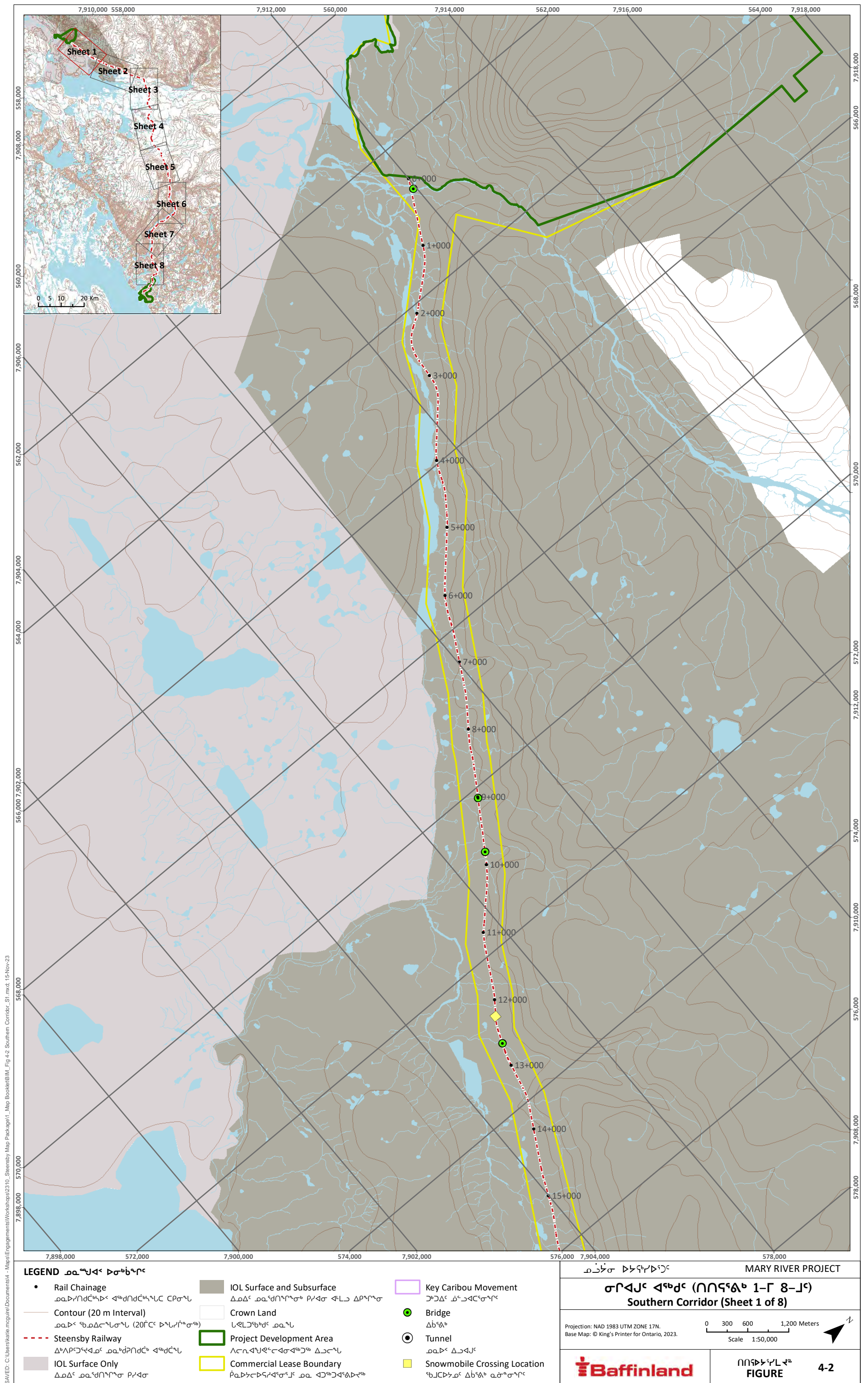
Baffinland

FIGURE 3-1

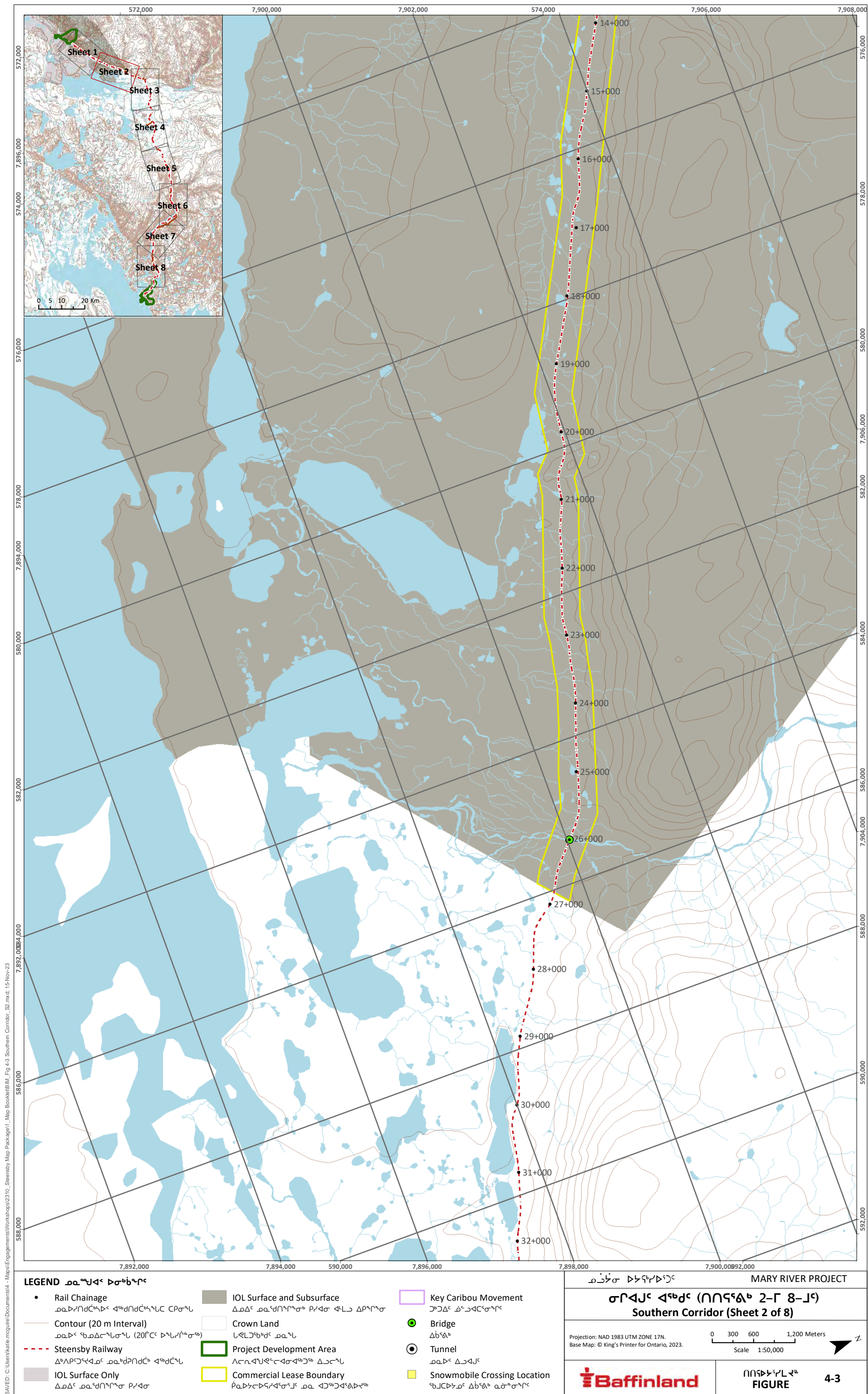


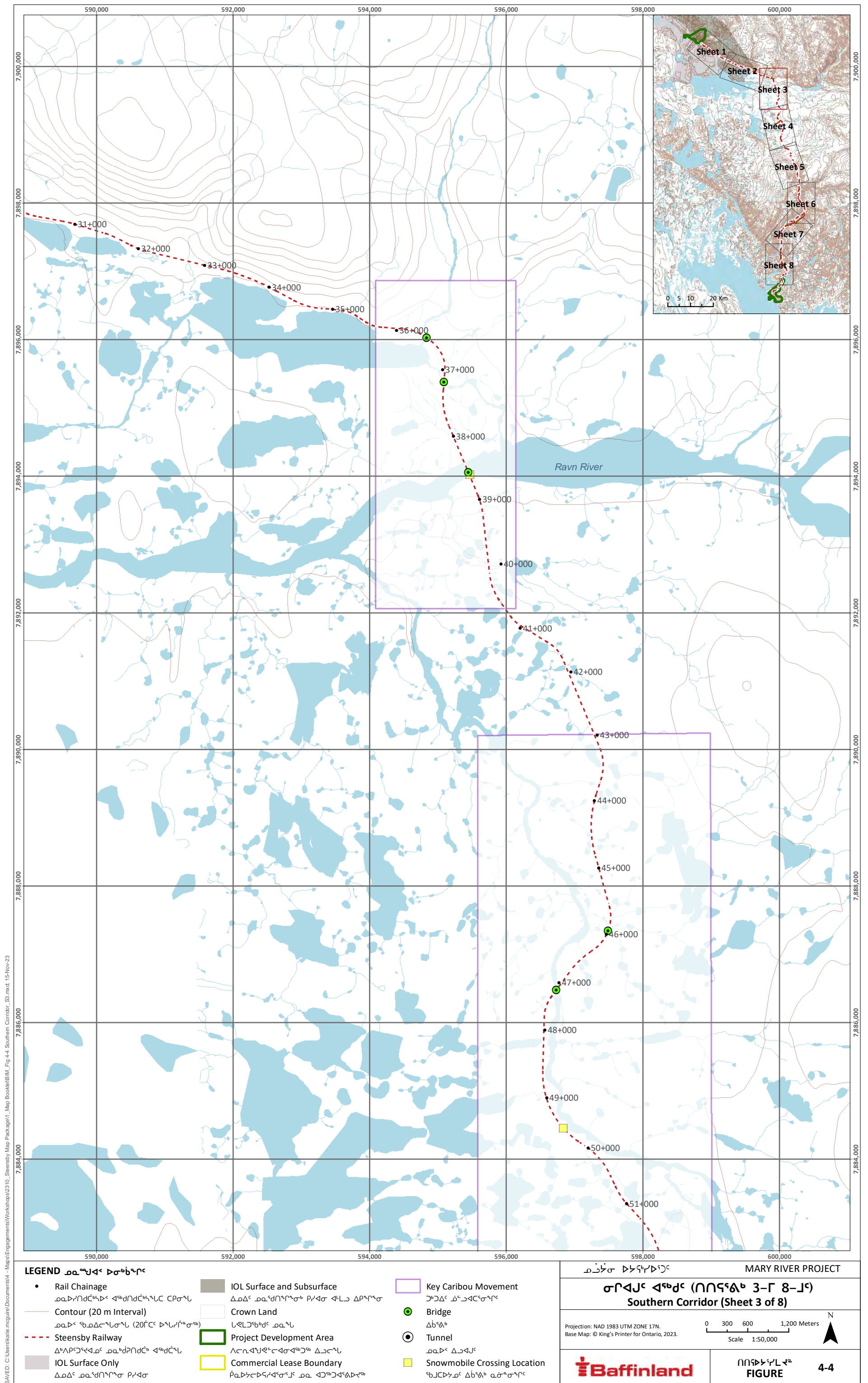




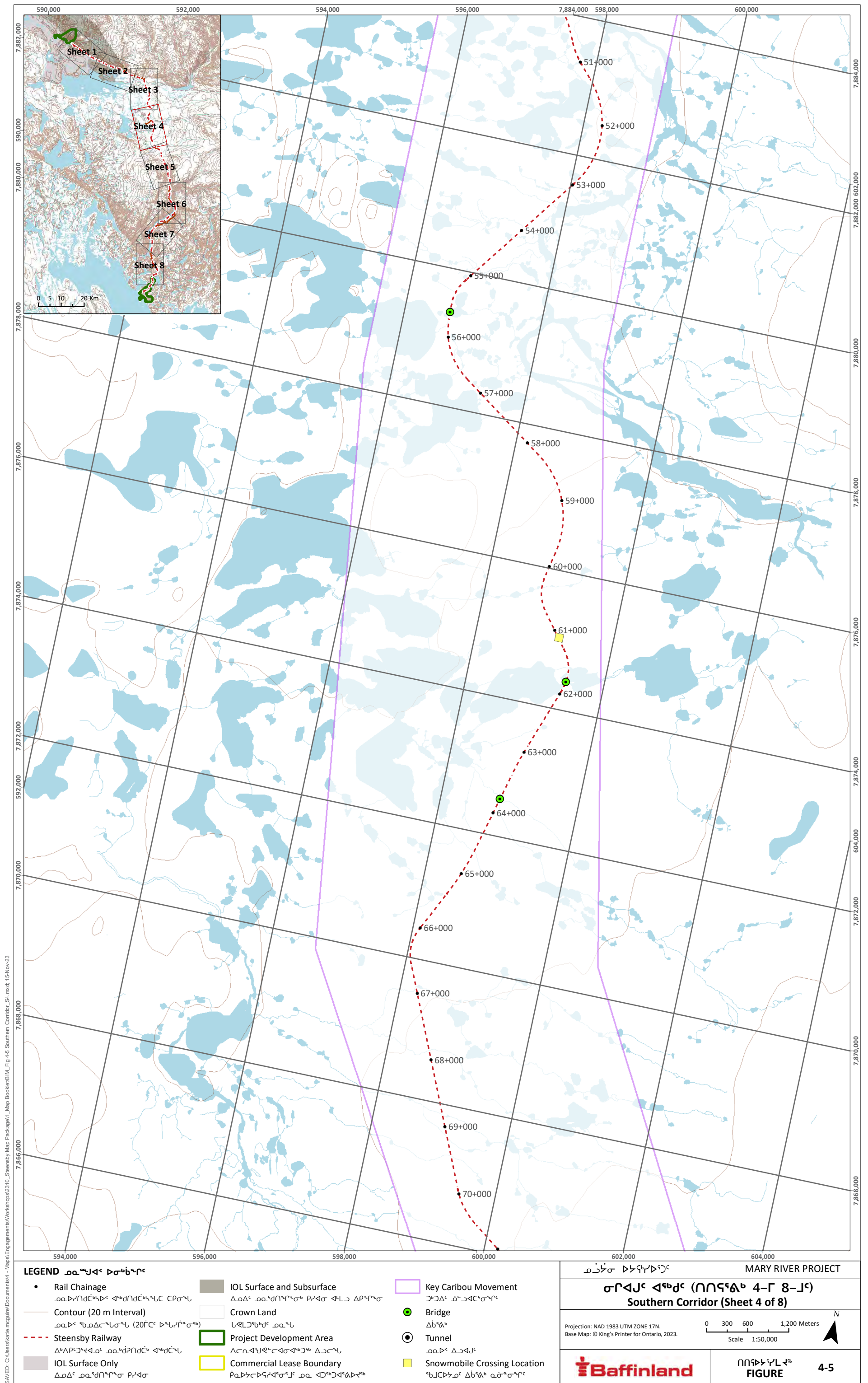


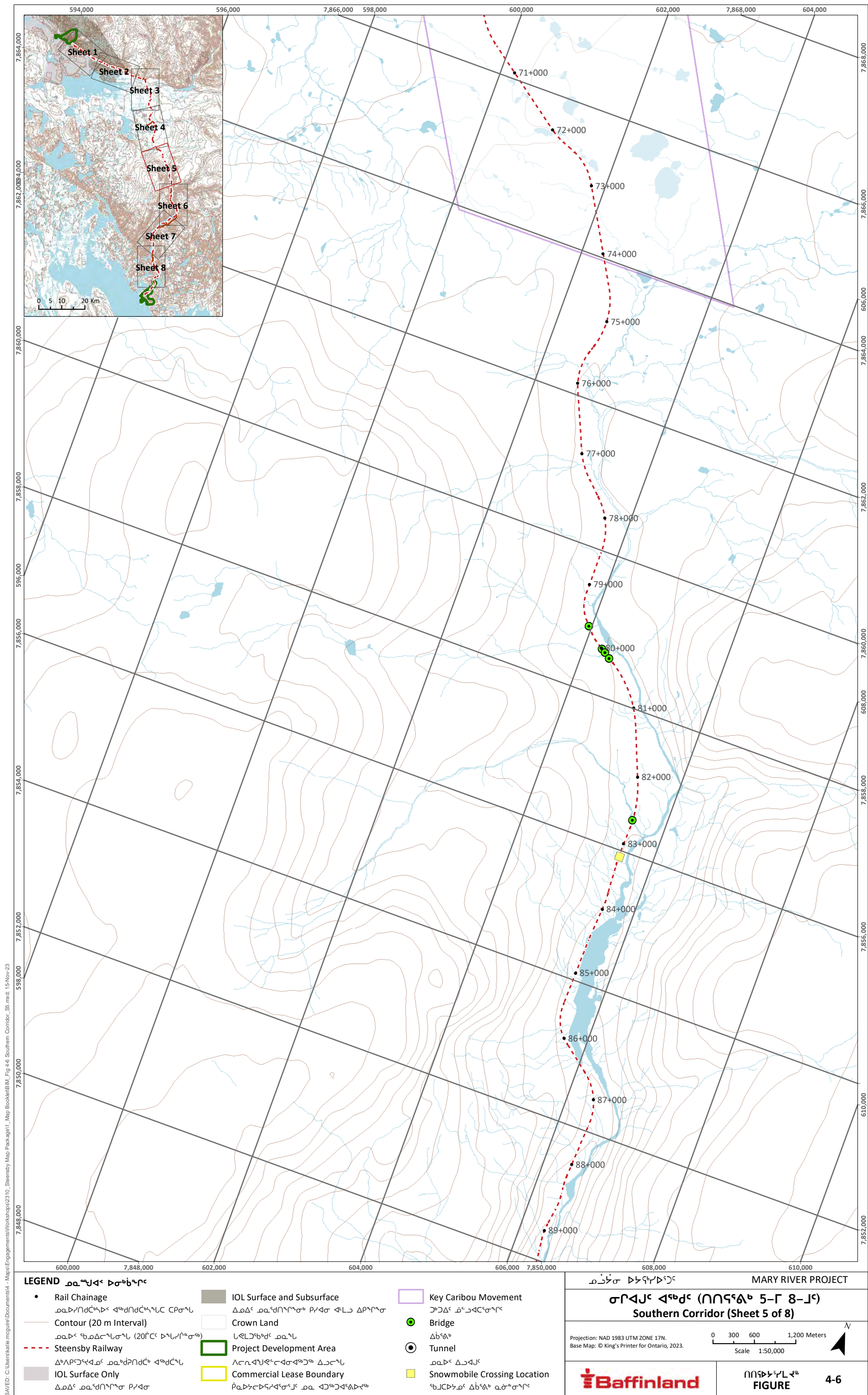




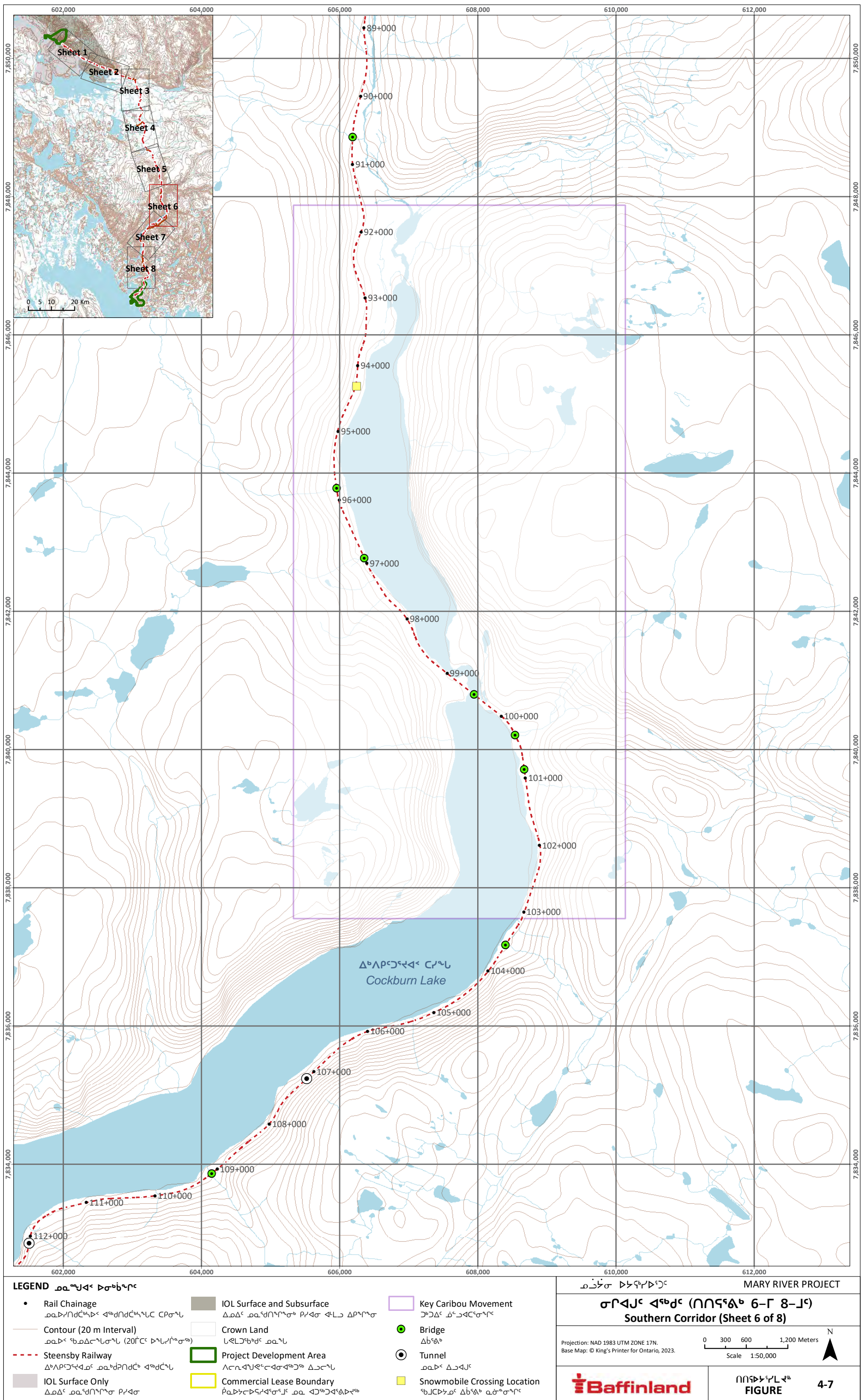




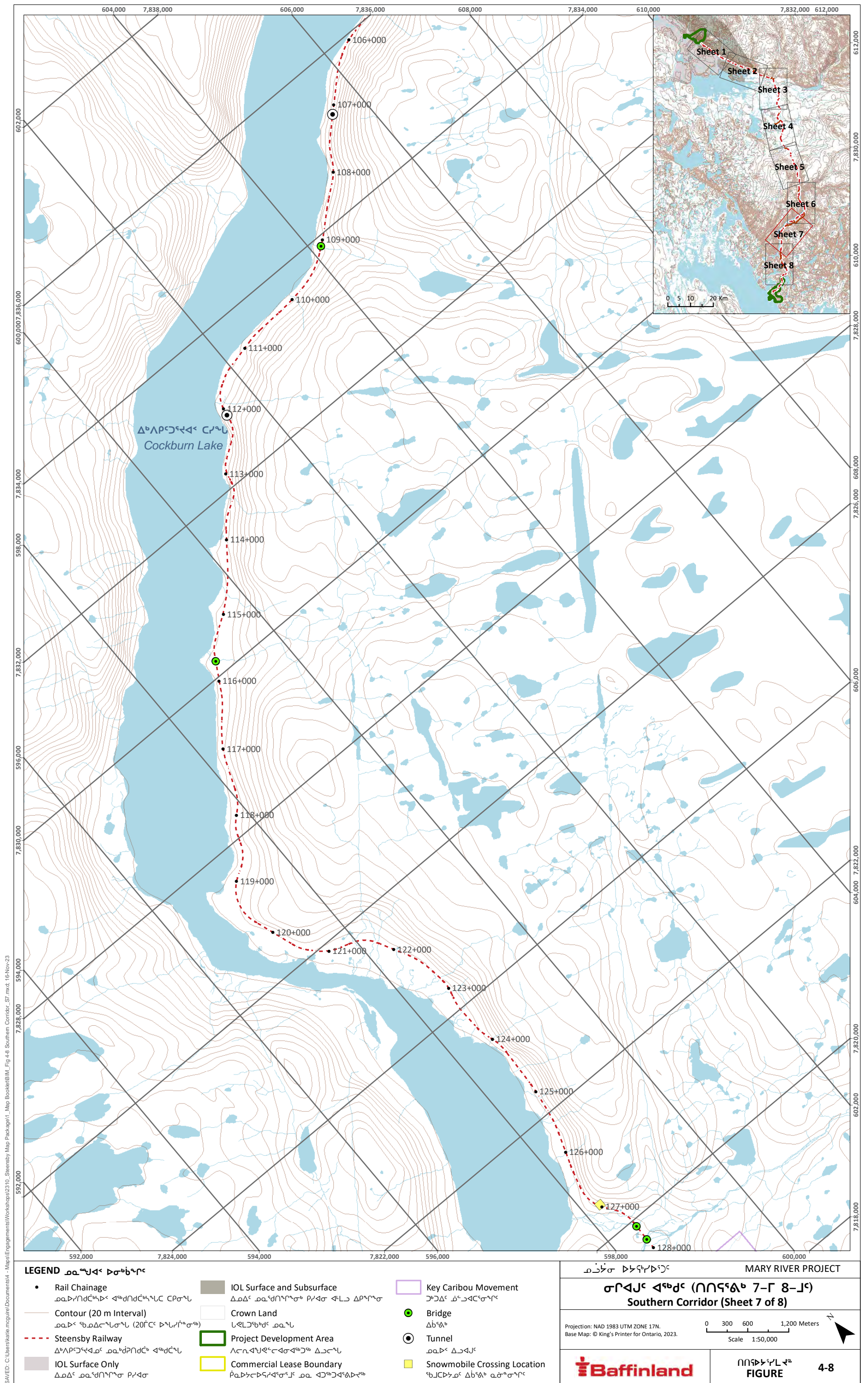




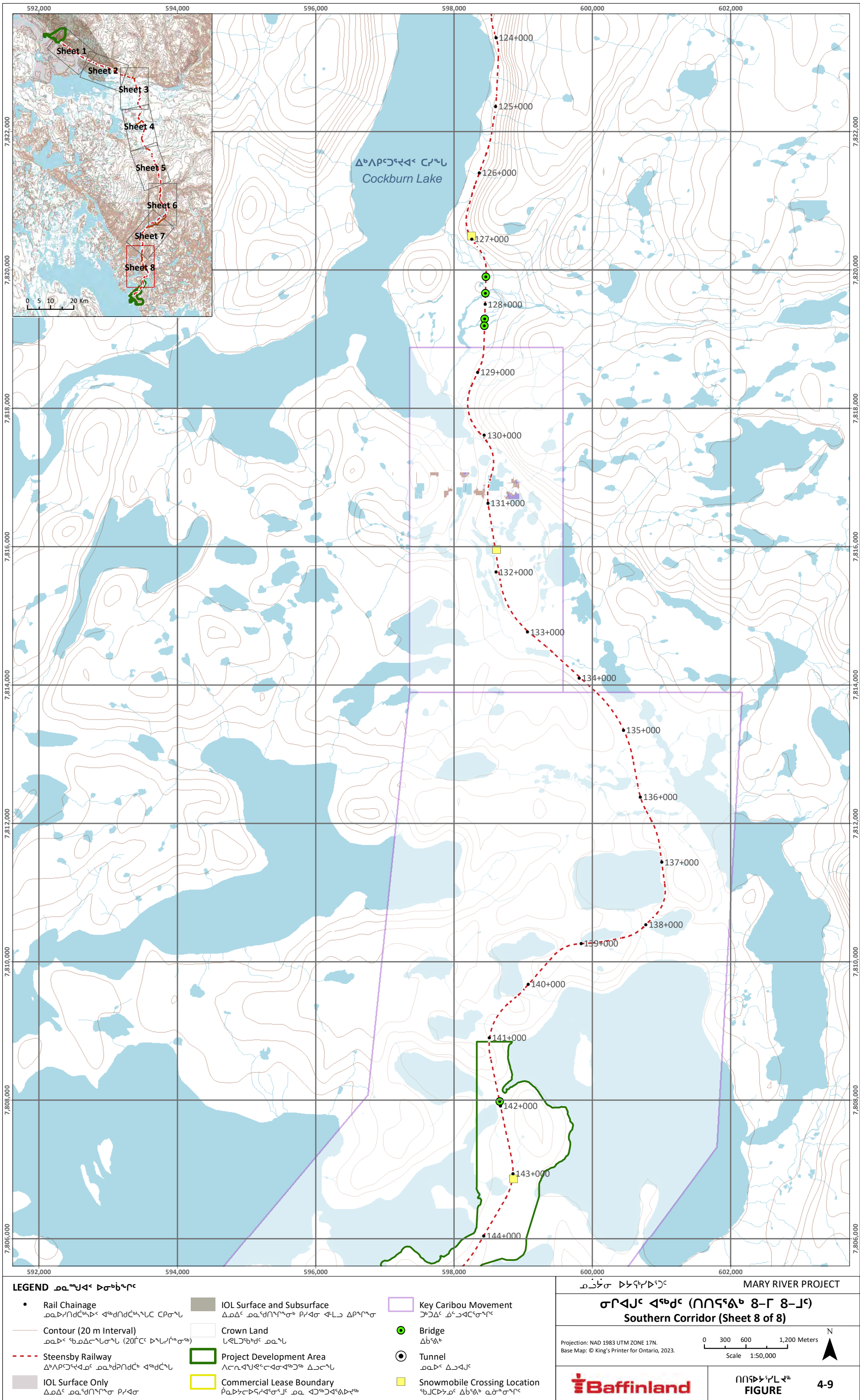














SAVED: C:\Users\skate\my\Documents\4 - Maps\Engagements\Workshops\2310\_ Steensby Map Pack\app1 - Map Booklet\BIM, Fig 5-1 South Railway\_Caribou Crossing\_Bilingual.mxd: 16-Nov-23

