

- LEGEND:**
- WATER STATION
  - STEENSBY RAILWAY
  - - - CATCHMENT BOUNDARY

- NOTES:**
1. COORDINATE GRID IS IN METRES.  
COORDINATE SYSTEM: NAD 1983 UTM ZONE 17N.
  2. BASE MAP IMAGERY: © 2021 DIGITAL GLOBE, INC.
  3. RAILWAY ALIGNMENT PROVIDED BY SYSTRA  
(NOV 13, 2023).



BAFFINLAND IRON MINES CORPORATION

MARY RIVER PROJECT

**WATER STATION  
BR-46-1 CATCHMENT**



PIA NO.  
NB102-181/94

REF NO.  
1

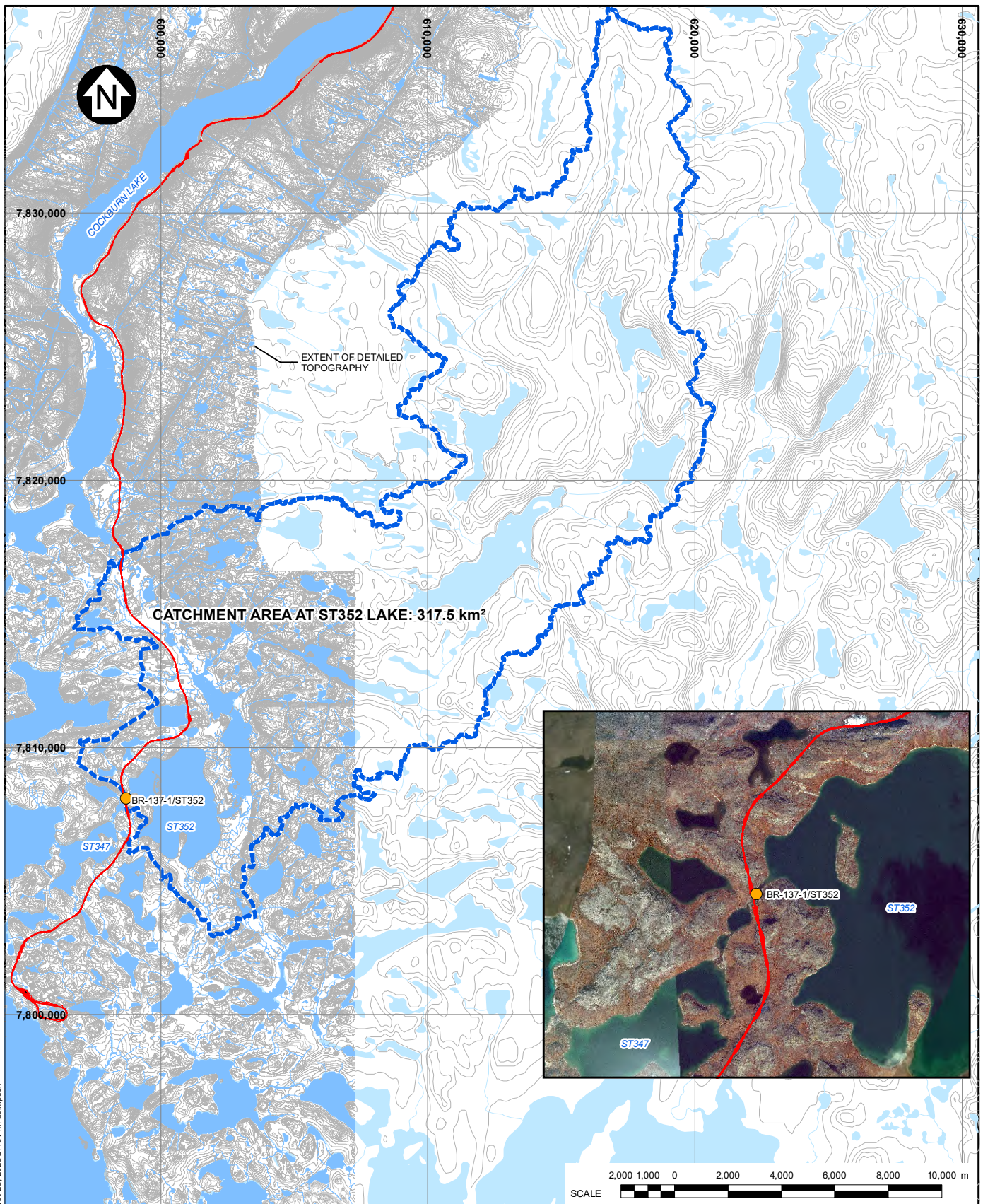
**FIGURE B.4**

REV  
0

SAVED: I:\10200181\94\GIS\Figs\B4\9 R0.mxd; Nov 28, 2023 2:43 PM; asimpson

REV	DATE	DESCRIPTION	GMJ DESIGNED	AS DRAWN	RAC REVIEWED
0	28NOV23	ISSUED WITH REPORT			





#### LEGEND:

- WATER STATION
- STEENSBY RAILWAY
- POTENTIAL DEVELOPMENT AREA
- - - CATCHMENT BOUNDARY

#### NOTES:

1. COORDINATE GRID IS IN METRES.  
COORDINATE SYSTEM: NAD 1983 UTM ZONE 17N.
2. BASE MAP IMAGERY: © 2021 DIGITAL GLOBE, INC.
3. RAILWAY ALIGNMENT PROVIDED BY SYSTRA  
(NOV 13, 2023).

BAFFINLAND IRON MINES CORPORATION

MARY RIVER PROJECT

**WATER STATIONS  
BR-137-1 AND ST352  
CATCHMENT**



**Knight Piésold  
CONSULTING**

PIA NO.  
NB102-181/94

REF NO.  
1

**FIGURE B.5**

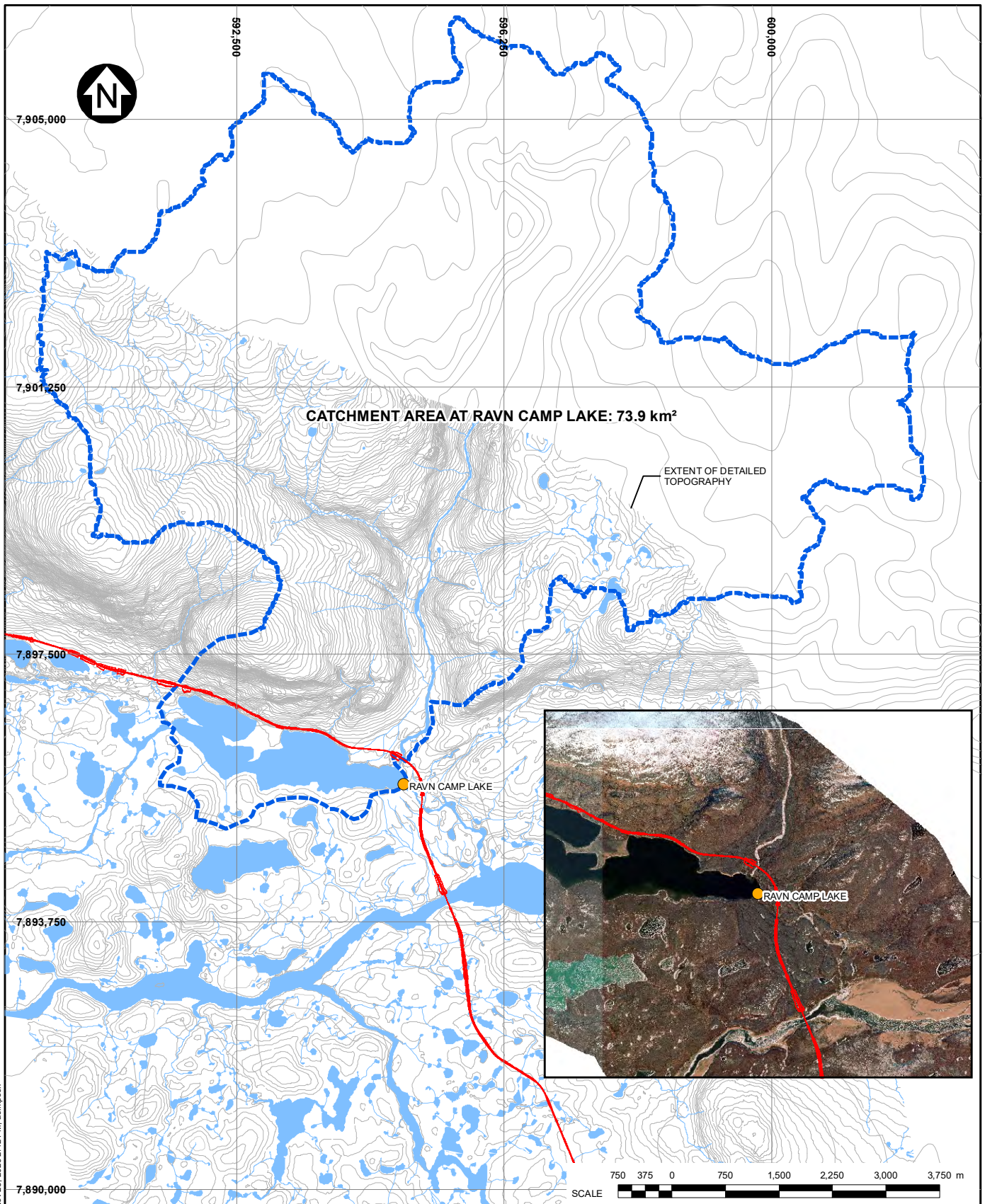
REV  
0

SAVED: I:\110200181\94\GIS\Figs\A13 RO.mxd; Nov 28, 2023 2:48 PM; asimpson

REV	DATE	DESCRIPTION
0	28NOV23	ISSUED WITH REPORT

GMJ	AS	RAC
DESIGNED	DRAWN	REVIEWED





**LEGEND:**

- WATER STATION
- STEENSBY RAILWAY
- CATCHMENT BOUNDARY

**NOTES:**

1. COORDINATE GRID IS IN METRES.  
COORDINATE SYSTEM: NAD 1983 UTM ZONE 17N.
2. BASE MAP IMAGERY: © 2021 DIGITAL GLOBE, INC.
3. RAILWAY ALIGNMENT PROVIDED BY SYSTRA  
(NOV 13, 2023).

BAFFINLAND IRON MINES CORPORATION

MARY RIVER PROJECT

**WATER STATION  
RAVN CAMP LAKE  
CATCHMENT**

**kp Knight Piésold  
CONSULTING**

PIA NO.  
NB102-181/94

REF NO.  
1

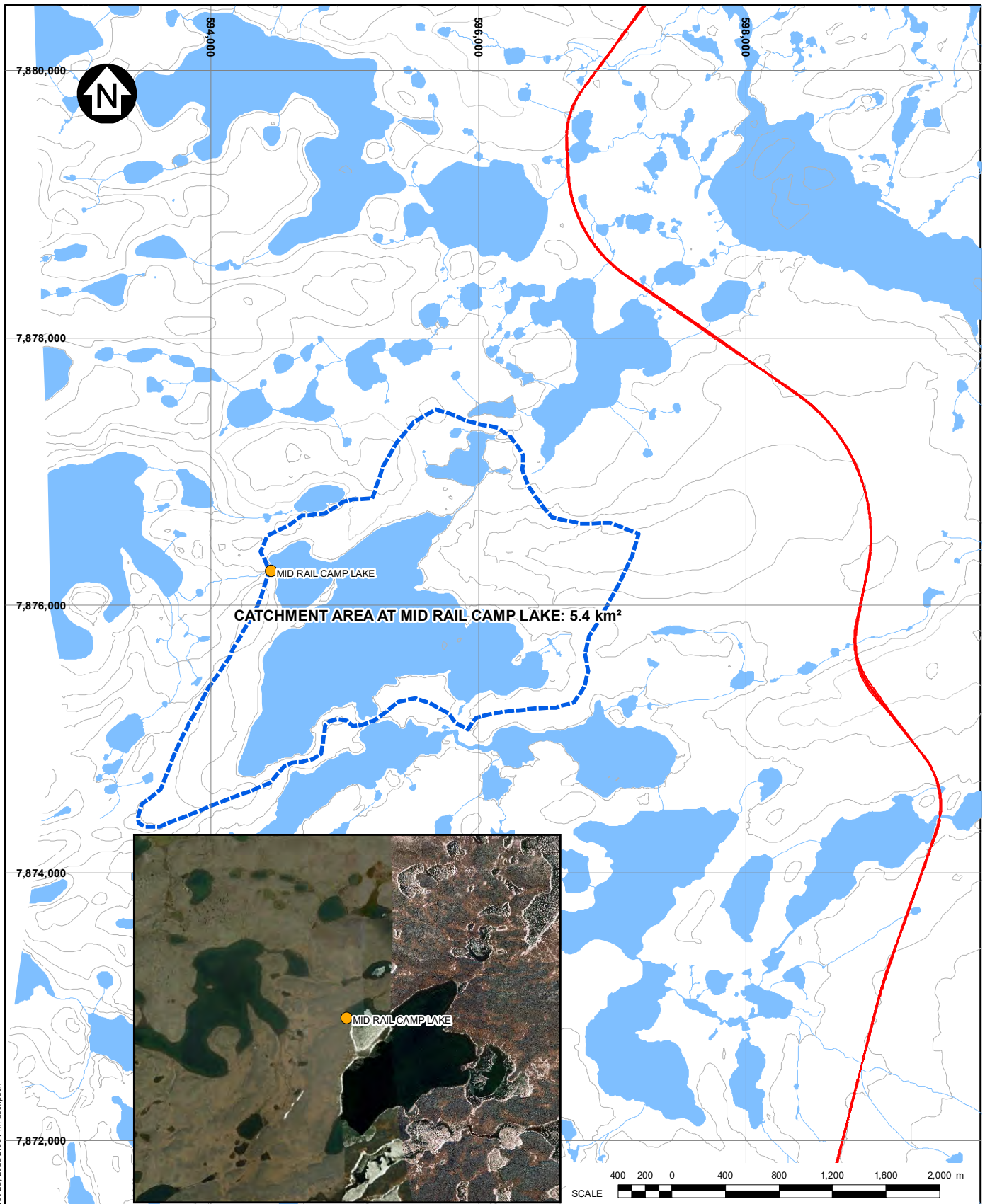
**FIGURE B.6**

REV  
0

SAVED: I:\10200181\94\GIS\Figs\A11\_R0.mxd: Nov 28, 2023 2:42 PM: asimpson

REV	DATE	DESCRIPTION
0	28NOV23	ISSUED WITH REPORT

GMJ	AS	RAC
DESIGNED	DRAWN	REVIEWED



SAVED: I:\102000181\94A\GIS\Figs\A10 R0.mxd; Nov 28, 2023 2:53 PM; asimpson

WATER STATION

STEENSBY RAILWAY

CATCHMENT BOUNDARY

NOTES:

1. COORDINATE GRID IS IN METRES.  
COORDINATE SYSTEM: NAD 1983 UTM ZONE 17N.

2. BASE MAP IMAGERY: c 2021 DIGITAL GLOBE, INC.

3. RAILWAY ALIGNMENT PROVIDED BY SYSTRA  
(NOV 13, 2023).

BAFFINLAND IRON MINES CORPORATION

MARY RIVER PROJECT

WATER STATION  
MID-RAIL CAMP LAKE  
CATCHMENT

kp

Knight Piésold

CONSULTING

PIA NO.  
NB102-181/94

REF NO.  
1

FIGURE B.7

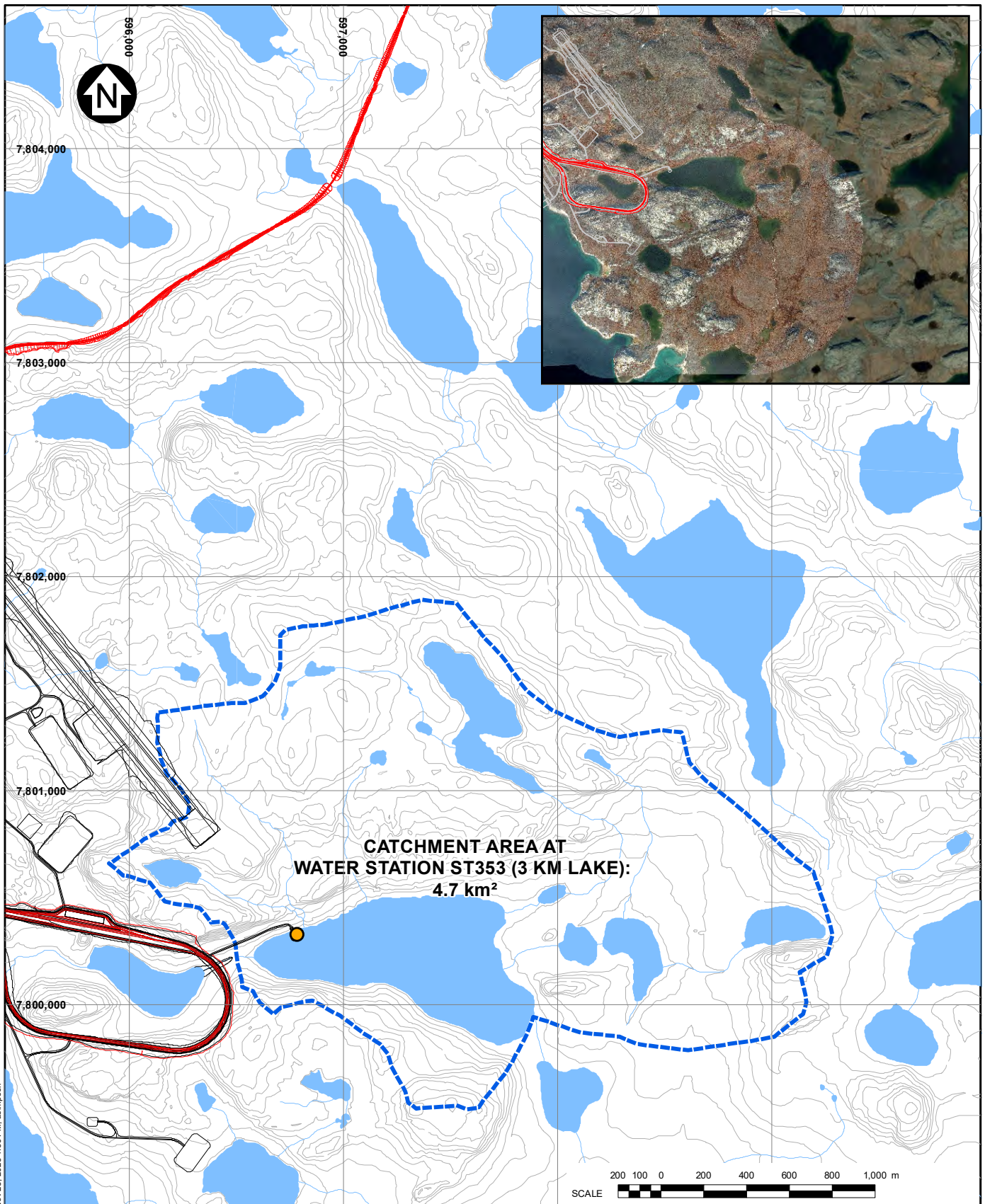
REV  
0

0	28NOV23	ISSUED WITH REPORT	GMJ	AS	RAC
REV	DATE	DESCRIPTION	DESIGNED	DRAWN	REVIEWED









**LEGEND:**

- WATER STATION
- STEENSBY RAILWAY
- POTENTIAL DEVELOPMENT AREA
- - - CATCHMENT BOUNDARY

**NOTES:**

1. COORDINATE GRID IS IN METRES.  
COORDINATE SYSTEM: NAD 1983 UTM ZONE 17N.
2. BASE MAP IMAGERY: © 2021 DIGITAL GLOBE, INC.
3. RAILWAY ALIGNMENT PROVIDED BY SYSTRA  
(NOV 13, 2023).
4. STEENSBY INFRASTRUCTURE PROVIDED BY AUSENCO  
(NOV 7, 2023).

BAFFINLAND IRON MINES CORPORATION

MARY RIVER PROJECT

**WATER STATION  
ST353 (3 KM LAKE)  
CATCHMENT**



**Knight Piésold  
CONSULTING**

PIA NO.  
NB102-181/94

REF NO.  
1

**FIGURE B.9**

REV  
0

SAVED: I:\10200181\94\GIS\Figs\A14 R0.mxd; Nov 28, 2023 4:59 PM; asimpson

REV	DATE	DESCRIPTION
0	28NOV23	ISSUED WITH REPORT

GMJ	AS	RAC
DESIGNED	DRAWN	REVIEWED