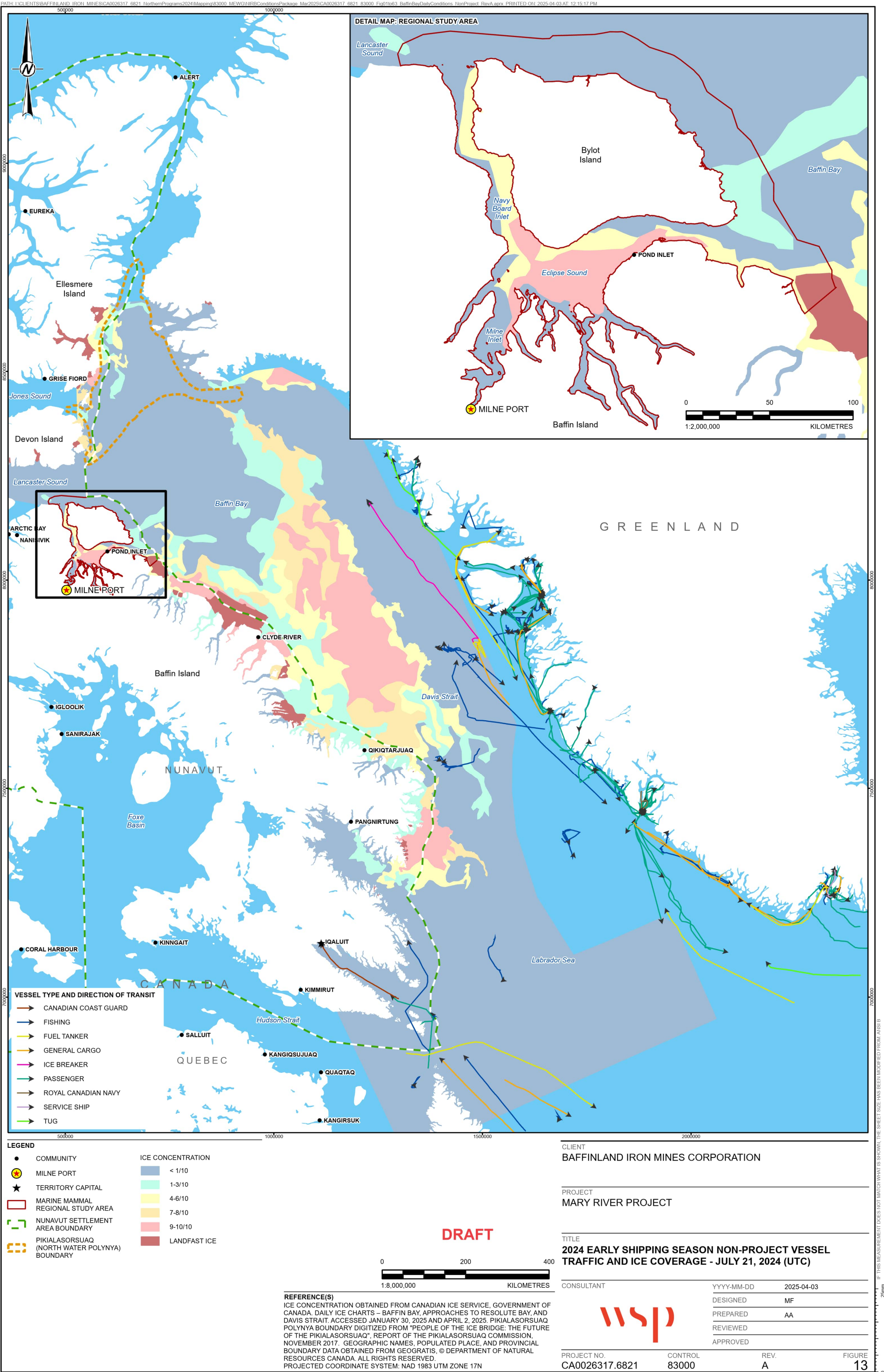


A vertical scale bar with markings from 0 to 25mm. The bar is oriented vertically with the 0 mark at the bottom and the 25mm mark at the top. Major tick marks are present at 0, 5, 10, 15, 20, and 25mm. Minor tick marks are present every 1mm.

REFERENCE(S)
ICE CONCENTRATION OBTAINED FROM CANADIAN ICE SERVICE, GOVERNMENT OF CANADA. DAILY ICE CHARTS – BAFFIN BAY, APPROACHES TO RESOLUTE BAY, AND DAVIS STRAIT. ACCESSED JANUARY 30, 2025 AND APRIL 2, 2025. PIKIALASORSUAQ POLYNYA BOUNDARY DIGITIZED FROM "PEOPLE OF THE ICE BRIDGE: THE FUTURE OF THE PIKIALASORSUAQ". REPORT OF THE PIKIALASORSUAQ COMMISSION, NOVEMBER 2017. GEOGRAPHIC NAMES, POPULATED PLACE, AND PROVINCIAL BOUNDARY DATA OBTAINED FROM GEOGRATIS. © DEPARTMENT OF NATURAL RESOURCES CANADA. ALL RIGHTS RESERVED.
PROJECTED COORDINATE SYSTEM: NAD 1983 UTM ZONE 17N

PROJECT NO.	CONTROL	REV.	FIGURE
CA0026317.6821	83000	A	12

DRAFT



REFERENCE(S)
ICE CONCENTRATION OBTAINED FROM CANADIAN ICE SERVICE, GOVERNMENT OF CANADA. DAILY ICE CHARTS – BAFFIN BAY, APPROACHES TO RESOLUTE BAY AND DAVIS STRAIT. ACCESSED JANUARY 30, 2025 AND APRIL 2, 2025. PIKIALASORSUAQ POLYNIA BOUNDARY DIGITIZED FROM "PEOPLE OF THE ICE BRIDGE: THE FUTURE OF THE PIKIALASORSUAQ", REPORT OF THE PIKIALASORSUAQ COMMISSION, NOVEMBER 2017. GEOGRAPHIC NAMES, POPULATED PLACE, AND PROVINCIAL BOUNDARY DATA OBTAINED FROM GEOGRATIS, © DEPARTMENT OF NATURAL RESOURCES CANADA. ALL RIGHTS RESERVED.
PROJECTED COORDINATE SYSTEM: NAD 1983 UTM ZONE 17N

CLIENT
BAFFINLAND IRON MINES CORPORATION

PROJECT
MARY RIVER PROJECT

TITLE
2024 EARLY SHIPPING SEASON NON-PROJECT VESSEL
TRAFFIC AND ICE COVERAGE - JULY 21, 2024 (UTC)

CONSULTANT	YYYY-MM-DD	2025-04-03
	DESIGNED	MF
	PREPARED	AA
	REVIEWED	
	APPROVED	

PROJECT NO.	CONTROL	REV.	FIGURE
CA0026317.6821	83000	A	13

