

N2015C0014
2018 CIRNAC LAND USE ANNUAL REPORT

**FOR THE ASTON BAY PROPERTY
(ALSO KNOWN AS THE STORM PROPERTY)
NUNAVUT, CANADA**

Prepared For:

Aston Bay Holdings Ltd.
303-80 Richmond Street West
Toronto, ON M5H 2A4

Prepared By:

APEX Geoscience Ltd.
410-800 West Pender Street
Vancouver, BC V6C 2V6

January 2019

Table of Contents

1	Summary	3
2	Introduction	4
3	Land Use Area Description and Location	4
4	2018 Exploration	7
5	Personnel	10
6	Land Use Considerations.....	10
6.1	Camp & Waste	10
6.2	Fuel Storage	12
6.3	Flights	13
6.4	Drilling.....	13
6.5	Archaeological Sites.....	15
6.6	Inuit Owned Land	15
7	Wildlife and Environment	16
8	Reclamation Work.....	17
9	Waste Disposal.....	17
10	Inspections	17
11	2019 Work Plan.....	18

Tables

Table 1	2018 Drill Hole Locations & Depths	10
Table 2	Storm Camp Remaining Structures August 25, 2018	11
Table 3	Storm Camp Remaining Equipment August 25, 2018	11
Table 4	Storm Camp Fuel Inventory August 25, 2018	13
Table 5	Remaining Drill Equipment August 25, 2018	14
Table 6	Remaining Drill Consumables August 25, 2018.....	15
Table 7	Wildlife Record Log	16

Figures

Figure 1	Aston Bay Property Location.....	5
Figure 2	Aston Bay Property Mineral Tenure Map	6
Figure 3	Storm Copper Area 2018 Drill Hole Locations	8
Figure 4	Seal Zinc Area 2018 Drill Hole Locations.....	9

Appendices

Appendix 1	- 2018 Aston Bay Property Mineral Claims and Prospecting Permits.....	19
Appendix 2	- 2018 Exploration Program Personnel.....	23
Appendix 3	- 2018 Aston Bay Property Photos	25
Appendix 4	- Storm Camp 2018 Water Usage.....	33
Appendix 5	- Inspection Reports	35

1 Summary

CIRNAC Land Use Permit Number: **N2015C0014**

NWB Water Licence Number: **2BE-STO1520**

Work Completed: Diamond Drilling, Prospecting

Dates Work Completed: June 15, 2018 to August 25, 2018

Property Location: NTS 058B14, 058B15, 058C02, 058C03, 058C06, 058C07, 058C10, 058C11, 058C13, 058C14, 058F04; Somerset Island, Nunavut, Canada

Storm Camp Location: 73°39'23" N latitude; 94°27'07" W longitude

2 Introduction

The Aston Bay Property is located on northern Somerset Island, Nunavut in the Canadian Arctic Archipelago (Figure 1). The nearest community is the hamlet of Resolute Bay, located 112 km north of the Property, on Cornwallis Island. The Property is approximately 1,500 km northwest of Iqaluit, the capital of Nunavut, and about 1,500 km northeast of Yellowknife, Northwest Territories. The Aston Bay Property includes the Seal Zinc prospect and multiple copper-silver showings, collectively known as the Storm Copper prospect.

The 2018 Aston Bay Property exploration comprised diamond drilling and several prospecting traverses. All exploration activities were helicopter supported and based out of Storm Camp, located along the Aston River at approximately 73°39'23" N latitude and 94°27'07" W longitude. The program was completed between June 15 and August 25, 2018, including mobilization and demobilization of camp.

The 2018 Aston Bay Property exploration program was conducted in accordance with the Crown-Indigenous Relations and Northern Affairs Canada ("CIRNAC") Land Use Permit N2015C0014, and Nunavut Water Board ("NWB") Water Licence 2BE-STO1520, both issued to Aston Bay. Crown Land Use and Water Licence inspections were conducted on July 25, 2018.

3 Land Use Area Description and Location

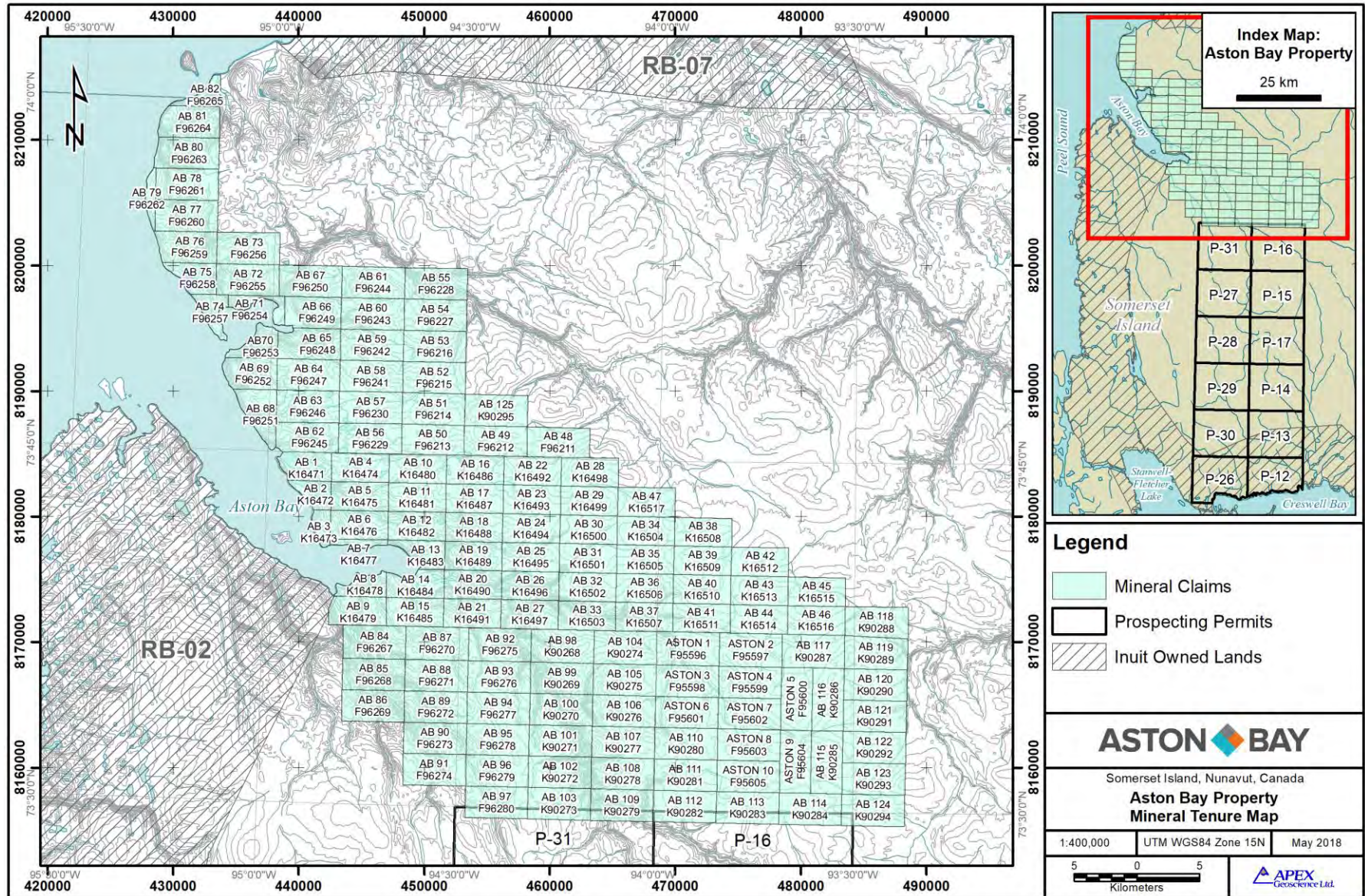
The Aston Bay Property is situated in the Qikiqtaaluk Region of Nunavut, within the 1:50,000 scale NTS (National Topographic System) map sheets 058B14 and 15, and 058C02, 03, 06, 07, 10, 11, 13 and 14. The Property comprises one hundred thirty-four contiguous mineral claims and twelve prospecting permits (Figure 2; Appendix 1). The mineral claims and prospecting permits are 100% owned by Aston Bay.

The Aston Bay Property covers a combined area of approximately 976,357.1 acres (395,118.0 ha). The Property is bound by latitudes 72°45' N and 74°01' N, and longitudes 93°20' W and 95°20' W, and is centered at approximately 73°20' N latitude and 94°30' W longitude.

Figure 1 Aston Bay Property Location



Figure 2 Aston Bay Property Mineral Tenure Map



4 2018 Exploration

The 2018 Aston Bay Property exploration program comprised diamond drilling and several prospecting traverses. The 2018 drilling was completed by Top Rank Diamond Drilling Ltd. of Ste. Rose, MB. Personnel from Aston Bay Holdings Ltd. of Toronto, ON and APEX Geoscience Ltd. of Vancouver, BC, managed the drill program and provided geological services.

All field activities during the 2018 program were helicopter supported and based out of Storm Camp, located along the Aston River at approximately 73°39'23" N latitude and 94°27'07" W longitude. An AS350B3 helicopter was contracted from Panorama Helicopters Ltd. of Alma, QC, for the duration of the program. A fixed wing Twin Otter aircraft based in Storm Camp was chartered from Kenn Borek Air Ltd. of Calgary, AB. Camp services and logistical support was provided by South Camp Enterprises of Resolute Bay, NU, Atco Structures & Logistics of Resolute Bay, NU and Discovery Mining Services Ltd. ("DMS") of Yellowknife, NT.

The 2018 exploration program was completed between June 15 and August 25, 2018, including mobilization and demobilization of camp. A notice of commencement for the 2018 program was sent to the INAC Engineer at landsmine@aandc.gc.ca, and to the INAC Manager of Land Administration, a Resource Management Officer and a Water Resources Officer on June 6, 2018. A notice of commencement and safety plan was sent to the Workers Safety and Compensation Commission (WSCC) Chief Inspector of Mines and Nunavut Mines Inspector on May 31, 2018. Permission for the work program was granted by the WSCC on June 11, 2018.

Thirteen drill holes, totaling 3,135 metres, were completed at nine drill sites (Table 1, Figures 3 and 4). Drilling was completed in the Storm West, Storm Central, Storm East and Seal South areas. The drill holes were completed within mineral claims AB 2, AB 25, AB 31, AB 32, AB 33, AB 41, ASTON 1 and ASTON 2. Two diamond drills were used to complete the 2018 program: a Zinex A-5 and a Multi Power Products Discovery II. The drill program was completed between June 28 and August 20, 2018, excluding mobilization and demobilization of the drills.

Figure 3 Storm Copper Area 2018 Drill Hole Locations

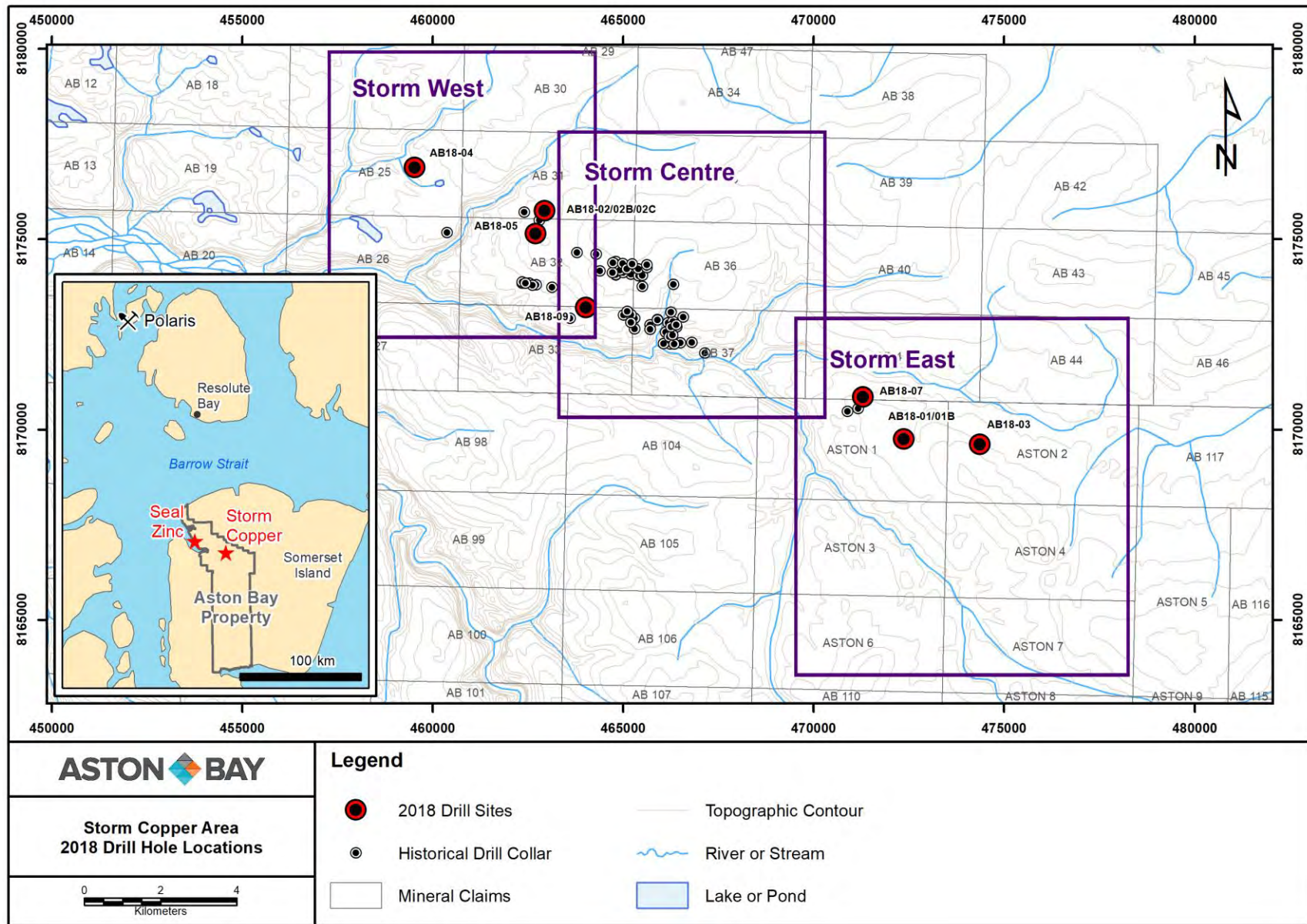


Figure 4 Seal Zinc Area 2018 Drill Hole Locations

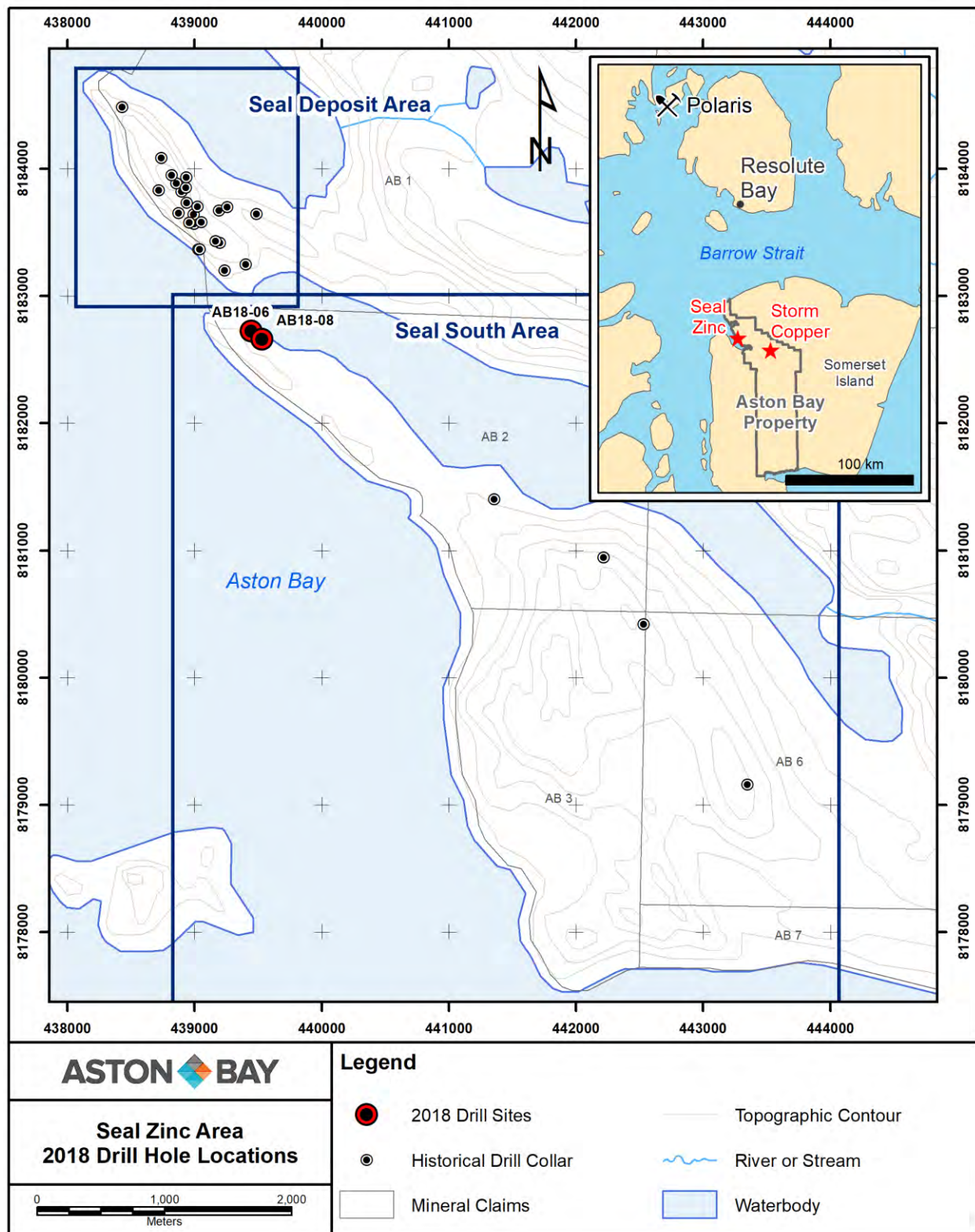


Table 1 2018 Drill Hole Locations & Depths

Hole ID	Area	Easting (UTM WGS84)	Northing (UTM WGS84)	Hole Depth (m)	Hole Diameter
AB18-01	Storm East	472371.65	8169734.03	191.0	NQ
AB18-01B	Storm East	472371.65	8169734.03	308.0	NQ
AB18-02	Storm West	462932.30	8175740.55	167.0	NQ
AB18-02B	Storm West	462932.30	8175740.55	185.0	NQ
AB18-02C	Storm West	462932.30	8175740.55	158.0	NQ
AB18-03	Storm East	474360.19	8169598.77	316.0	NQ
AB18-04	Storm West	459520.64	8176876.51	473.0	NQ
AB18-05	Storm West	462699.20	8175132.70	322.0	NQ
AB18-06	Seal South	439445.68	8182722.59	51.0	NQ
AB18-06B	Seal South	439445.68	8182722.59	171.0	NQ
AB18-07	Storm East	471301.02	8170849.28	300.0	NQ
AB18-08	Seal South	439529.32	8182657.70	296.0	NQ
AB18-09	Storm Centre	464016.01	8173190.19	200.0	NQ

5 Personnel

Personnel associated with the 2018 exploration program are listed in Appendix 2.

6 Land Use Considerations

6.1 Camp & Waste

All field activities during the 2018 program were helicopter supported and based out of Storm Camp, located along the Aston River at approximately 73°39'23" N latitude and 94°27'07" W longitude. The camp site is located on an elevated gravel bar in the river valley. It includes an airstrip suitable for landing a Twin Otter. A staging area was established at the east end of the airstrip, approximately 600 metres west of Storm Camp.

Camp equipment was mobilized from Yellowknife to Resolute Bay ahead of the program by chartered aircraft and was shuttled to site by Twin Otter at the start of the program. Eighteen structures were constructed during 2018, in addition to the four existing plywood structures already on site (pacto toilet shack, storage shack, water tank shack, generator shack). With the exception of the kitchen and core cutting shack, the new structures were all insulated Weatherport tents, built upon existing wooden floors. The kitchen was constructed using dimensional lumber and plywood, upon an existing wooden floor.

Upon completion of the program, all tents and plywood buildings were left in place for future use. Electronics and communications gear were removed from site. Most other camp equipment was stored on site inside of the tents or plywood buildings. All remaining lumber was stacked at

the east end of camp for future use. Tables 2 and 3 list the structures and major equipment left on site at the close of the season on August 25, 2018. Camp photos are included in Appendix 3.

Table 2 Storm Camp Remaining Structures August 25, 2018

Quantity	Item
1	16'x32' plywood kitchen building.
1	14'x32' plywood floor for core shack.
1	12'x20' plywood latrine shack. Includes 5 pacto toilets.
1	10'x16' plywood storage shack.
1	10'x12' plywood generator shack. Includes exhaust piping, etc.
1	12'x12' plywood core cutting shack.
11	14'x16' insulated Weatherport tents on plywood floor to serve as sleeper tents. Includes plywood beds, tables, chairs etc.
3	14'x16' insulated Weatherport tents on plywood floors to serve as dries. Includes shower stalls, sink, plumbing, etc.
2	14'x16' insulated Weatherport tents on plywood floors to serve as office and first aid tent. Includes tables, chairs, etc.

Table 3 Storm Camp Remaining Equipment August 25, 2018

Quantity	Item
2	Water tanks (350gal & 250gal)
2	Hot water tanks
2	Water supply pumps with fish screen and hose line
2	Water pressure pumps
1	14 kVA diesel generator with 5 kW gas backups (x2)
1	Electrified bear fence (taken down at end of season)
1	Dual chamber controlled air incinerator
4	Refrigerators
3	Chest freezers
2	Cooking stoves
1	Dishwasher
3	Washing machines
3	Dryers
17	Toyotomi heating stoves
4	Oil drip stoves
5	Pacto toilets
3	Containment berms for fuel cache & drill equipment
20	Mini berms for tent drums and fuel transfer
	Heavy electrical cables and panel boxes
	Various lumber (stacked by generator shack)
	Various office, camp and medical supplies

Camp water was drawn from the Aston River for cooking and cleaning. Drinking water was purchased and flown in from Yellowknife/Resolute in 5 gallon jugs. A total of 72.77 m³ of water was drawn from the Aston River for camp use between June 24 and August 15, 2018, averaging 1.37 m³ per day. During this time running water, laundry and showers were available in camp. Water was drawn from the river using a 5.5 HP gas powered pump. The pump intake hose was equipped with a mesh screen to ensure fish were not entrained. When in use, during fueling or in transit, the pump was placed in a plastic spill tray. When not in use, the pump was stored in camp within secondary containment. No fuel was stored at the pump site and all fueling was completed in camp. Water volumes were measured using markings on the water storage tanks at 50 gallon increments. The volumes were recorded in a daily log by the camp foreman (Appendix 4).

Prior to June 24 during mobilization, the camp water tanks were empty and the imported 5 gallon water jugs were used for all camp purposes. After August 15, no additional water was pumped from the Aston River. The remaining water in the tanks was used during demobilization.

Grey water from the kitchen and each dry was piped to excavated sumps behind the buildings and over 100 m from the nearest water body. A grease trap was used for the kitchen sump. The trap was emptied as needed and the contents were sealed in 5 gallon pails and removed from site. The grease trap was removed from site at the end of the season.

All combustible waste was incinerated on site using a batch feed dual-chamber controlled air incinerator. Residual waste (ash) was sealed in metal 5 gallon pails and removed from site for disposal. All non-combustible and hazardous wastes were sealed in appropriate containers and removed from site for proper disposal. Pacto toilets were used during the 2018 program. Pacto toilets utilize plastic "sausage" bags to collect and store sewage. All pacto bags were incinerated.

6.2 Fuel Storage

During the 2018 program, the existing fuel cache was used, located adjacent to Storm Camp at approximately 73° 39' 23" N latitude and 94° 26' 58" W longitude. Jet fuel and diesel/gasoline were stored in separate caches within the same general area. All fuel was stored within secondary containment berms. Mini berms were used for tent drums. Fittings for each tent drums were wrapped in absorbent matting, and buckets were hung below the drum spigot to mitigate any fuel leakage (Appendix 3, Photo 5).

The majority of the fuel mobilized to site in 2018 was used during the exploration program. A small fuel cache remains at the Property (Table 4), located at the Storm Camp fuel cache site. All

remaining fuel is stored in covered secondary containment berms. Jet fuel is stored separately from diesel and gas. Remaining propane cylinders were secured to one of the plywood buildings.

Table 4 Storm Camp Fuel Inventory August 25, 2018

Material	Container	Quantity on Site
Diesel	205 L Drum	17 Drums*
Jet Fuel (Jet A)	205 L Drum	26 Drums
Gasoline	205 L Drum	2 Drums
Propane	100 lb Cylinder	7 Cylinders

The fuel cache is located a minimum of 31 metres from the normal high water mark of any water bodies. Prior to the completion of field work, and during the course of field work, drums were inspected for damage or leaks. No damaged or leaking drums were identified. Drums were stored in an organized manner with the bungs at the 9 o'clock and 3 o'clock positions. All empty fuel drums and waste fuel drums were backhauled to Resolute Bay for cleaning and storage/disposal on an ongoing basis.

No spills were reported during the 2018 program.

6.3 Flights

All field work completed during 2018 was helicopter supported, using Storm Camp as a base. An AS350 B3 was contracted from Panorama Helicopters for the duration of the program. Personnel and gear were transported to and from the field daily using the B2. Pilots were instructed, when possible, to avoid landing in areas with soft ground to avoid rutting. Helicopter pads at the camps and drill sites were situated on firm, level ground a safe distance from work sites.

A fixed wing Twin Otter aircraft based in Resolute Bay, NU was chartered from Kenn Borek for the duration of the program. The Twin Otter was used to move personnel, samples, fuel and supplies between Resolute Bay and the Storm Camp airstrip.

6.4 Drilling

Nine drill sites were used during the 2018 program (Table 1). All drill pads were located on stable ground a minimum of 31 metres from any water bodies. All drilling activities, including drill moves, were helicopter supported.

Fuel for the drills and supply pumps was stored within secondary containment berms, and drip trays were utilized during fuel transfer. Fuel was flown to each drill site as needed. Spill kits were

located at the drill, pump, fuel cache and staging area. No spills were reported during the 2018 program. All wastes were removed from site daily.

Water for the drills was drawn from the Aston River or its tributaries, or local lakes. Approximately 10,000 gallons (37.9 m³) of water was used per day at each drill between June 28 and August 20, 2018, totaling 4088 m³. Diesel supply pumps were used to supply water to the drill. The pump intake hose was equipped with a mesh screen to ensure fish were not entrained.

Recirculation systems were used to minimize the amount of water used and cuttings deposited on the land around drill sites. Return from the drill was directed into natural depressions within porous boulder fields. All drill cuttings collected in the recirculation system were deposited in natural depressions or, when possible, back down the open drill hole. Any drill casings that could not be removed were cut down to ground level and sealed. No artesian flow was encountered.

Upon completion of each hole, all equipment and any remaining wastes were removed, and the site was inspected for cleanliness and any sign of contamination. All sites were deemed to be acceptable. Final inspections of all the drill pads were completed on August 20, 2018. Final drill pad photos are included in Appendix 3.

All drilling was completed using two heli-portable drill rigs: one Multi Power Products Discovery II and one Zinex A-5. The drills, including most of the ancillary equipment and consumables, were left on site for subsequent drill programs. All equipment was drained of fuel and oil for off-season storage. Tables 5 and 6 list the drilling equipment and consumables left on site at the close of the season on August 25, 2018.

Table 5 Remaining Drill Equipment August 25, 2018

Quantity	Item
1	Zinex A-5 diamond drill with engine, feed frame, control panel, drill head, foot clamp, wireline and drill shack
1	MPP Discovery II diamond drill with engine, feed frame, control panel, drill head, foot clamp, wireline and drill shack
1	Spare engine
1	Spare rotation motor
1	Spare drill head
2	Spare feed cylinders
2	Spare foot clamps
2	Spare winch and pump drive motors
1	Spare main hydraulic pump
1	Spare wireline winch (2 spare rolls of wireline)
6	5 kW gas generators
2	Welders

Quantity	Item
5	Supply pumps (1 spare transmission)
4	Trash pumps
3	Spare down hole pumps
2	Mud seperators
6	Mud tanks
8	Coil stoves
3	Diesel heaters
6	Fuel tanks
2	Fly baskets
266	3m NQ drill rods
90	1.5m casing
16	Outer tubes
18	Inner tubes
75	200 psi water line
75	400 psi water line
4	Spill kits
2	Survival shacks
	Various fittings & tooling

Table 6 Remaining Drill Consumables August 25, 2018

Quantity	Item
112	Various drill muds (5 gal pails)
23	Motor oil (5 gal pails)
30	Hydraulic oil (5 gal pails)
36	Antifreeze
140	Calcium Chloride (50lb bags)

6.5 Archaeological Sites

No new or known archaeological sites were encountered during the 2018 exploration program.

6.6 Inuit Owned Land

Aston Bay Prospecting Permits P-12 and P-26, and portions of P-13 and P-30 lie within IOL parcel RB-02. No work was completed on Inuit Owned Land during the 2018 Aston Bay Property exploration program.

7 Wildlife and Environment

As a general rule, any interaction with wildlife was discouraged; however, all personnel were instructed on the appropriate action to take when encountering wildlife in the field. Whenever possible, the helicopter pilot was instructed to maintain a minimum altitude of 610 metres above ground level and, when necessary, alter course to avoid disturbing any wildlife spotted during flight. Prior to, and after dropping off field crews, the pilot conducted high altitude (>610 m) reconnaissance in order to identify and locate any wildlife in the area.

Several herds of muskox were observed from the helicopter and on the ground by field crews during the course of the program. One polar bear was sighted on the ice in Aston Bay, northwest of Seal Island. Seals were regularly observed from the helicopter on the ice or swimming in Aston Bay and along the western coast of Somerset Island. Sea birds were commonly observed around camp and in coastal areas. Fewer birds were seen inland, but snowy owls were spotted on several occasions. No sensitive wildlife sites are known to exist within the areas of exploration.

Table 7 Wildlife Record Log

Animal Species	Number	Age	Animal Activity	Habitat Type	Dates	Location Description	Approx. Latitude	Approx. Longitude
Muskox	5-10	Adult	Grazing	Tundra	Occasional sightings during July and August	Hills south of Aston River Valley	73° 38.9' N	94° 31.1' W
Muskox	5-10	Adult / juvenile	Grazing	Tundra	August 1-15	Seal South Area	73° 43.0' N	94° 51.5' W
Muskox	5-10	Adult / juvenile	Grazing	Tundra	August 1-15	South of Aston Camp	72° 41.7' N	94° 43.1' W
Snowy Owl	1	Adult	Standing / flying	Tundra	Occasional sightings during July	Storm East	73° 22.4' N	94° 19.5' W
Seal	Many	Adult	Lounging / swimming	Sea Ice / Ocean	Regular sightings throughout July and August	Aston Bay & Somerset Island Coast		
Polar Bear	1	Adult	Standing / walking	Sea Ice	July 8	Aston Bay northeast of Seal Island	73° 41.8' N	94° 57.2' W

A number of preventative measures were employed to avoid wildlife interaction in camp and at the drill. Storm Camp was equipped with an electrified “bear fence” as a wildlife deterrent and each tent was equipped with an air horn and bear spray. A dog was kept in camp as an additional deterrent and for warning of any approaching animals. The site supervisors and camp foreman had access to firearms in case of emergency. All food wastes were stored in appropriate bear-

proof containers and incinerated daily to remove attractants. Personnel were instructed to avoid bringing food into sleeper tents and to remove waste regularly.

The bear fence wire was taken down at the end of the 2018 season to avoid wildlife entanglements. No environmental studies were conducted in 2018.

8 Reclamation Work

Progressive reclamation included keeping work areas clean and removing wastes from work sites daily. All wastes were stored in appropriate containers for later incineration or removal. The camp and all drill sites were inspected by the site supervisors for cleanliness and any sign of contamination prior to the close of the field program. All sites were deemed acceptable.

Any drill casings from the 2018 program that could not be removed were cut down to ground level. Removal of protruding casing from previous operators is ongoing.

9 Waste Disposal

All combustible wastes were incinerated on site using a batch feed dual-chamber controlled air incinerator. Any residual waste (ash) was sealed in 5 gal metal pails and backhauled to Resolute Bay for proper disposal. All non-combustible and hazardous wastes were sealed in appropriate containers and backhauled to Resolute Bay for proper disposal.

Grey water from the kitchen and each dry was piped to excavated sumps behind the buildings and over 100 m from the nearest water body. A grease trap was used for the kitchen sump. The trap was emptied as needed and the contents were sealed in 5 gal pails and removed from site for disposal. The grease trap was removed from site at the end of the 2018 program. No leaks or overflows were observed in any of the sumps.

Pacto toilets were used to collect sewage. All pacto bags were incinerated on site using a batch feed dual-chamber controlled air incinerator.

10 Inspections

Crown Land Use and Water Licence inspections were conducted on July 25, 2018. Inspection Reports are included in Appendix 5. No instances of non-compliance were recorded; however, several actions are required for future programs.

During the 2016 and 2018 drilling programs, cuttings were deposited into porous boulder fields and natural depressions. This practice was deemed acceptable during previous inspections. At the request of the inspector in 2018, sumps are to be constructed to contain cuttings during

future programs. In addition, removal of legacy drill casings will continue. As recommended, Aston Bay will also consult the CIRNAC Engineer in regards to Item 63 of the Land Use Permit.

11 2019 Work Plan

The 2019 Aston Bay Property exploration program is anticipated to include a diamond drilling program of 5,000 to 10,000 metres (m), utilizing one or two drills. The average hole depth is expected to be approximately 250 m, up to a maximum anticipated length of 700 m. Additional exploration work may include soil and rock sampling, mapping and geophysical surveys. The 2019 exploration program is projected to start as early as June and continue until as late as September. Similar programs are anticipated for 3 to 4 subsequent years.

All exploration activities will be helicopter supported and based out of Storm Camp, located along the Aston River at approximately 73°39'23" N latitude and 94°27'07" W longitude. The camp site is located on an elevated gravel bar in the Aston River valley. It includes an airstrip suitable for landing a Twin Otter. Camp infrastructure includes six plywood buildings and sixteen Weatherport tents, built upon wooden platforms.

A fuel cache of approximately 80,000 L (~400 drums) will be established at the current fuel cache location, adjacent to camp. The cache will be primarily diesel and jet fuel, with small quantities of gasoline and propane. All fuel will be stored within secondary containment. All fuel caches will be located a minimum distance of 31 metres from the normal high water mark of any water body.

With proper design and execution, environmental impacts of the proposed exploration program are expected to be minimal. Plans are continuously being updated for storage and handling of fuel, waste management, reclamation, and wildlife management, all with the goal of ensuring minimal impact on the environment.

Appendix 1 - 2018 Aston Bay Property Mineral Claims and Prospecting Permits

Mineral Claims							
Claim Name	Claim Number	NTS Sheet	Recording Date	Anniversary Date	Area (acres)	Area (ha)	Owner Name
ASTON 1	F95596	058C/10	2014-09-02	2024-09-02	3,088.8	1,250.0	Aston Bay Holdings Inc.
ASTON 2	F95597	058C/10	2014-09-02	2024-09-02	3,088.8	1,250.0	Aston Bay Holdings Inc.
ASTON 3	F95598	058C/10	2014-09-02	2024-09-02	3,088.8	1,250.0	Aston Bay Holdings Inc.
ASTON 4	F95599	058C/10	2014-09-02	2024-09-02	3,088.8	1,250.0	Aston Bay Holdings Inc.
ASTON 5	F95600	058C/10	2014-09-02	2024-09-02	3,088.8	1,250.0	Aston Bay Holdings Inc.
ASTON 6	F95601	058C/10	2014-09-02	2024-09-02	3,088.8	1,250.0	Aston Bay Holdings Inc.
ASTON 7	F95602	058C/10	2014-09-02	2024-09-02	3,088.8	1,250.0	Aston Bay Holdings Inc.
ASTON 8	F95603	058C/10	2014-09-02	2024-09-02	3,088.8	1,250.0	Aston Bay Holdings Inc.
ASTON 9	F95604	058C/10	2014-09-02	2024-09-02	3,088.8	1,250.0	Aston Bay Holdings Inc.
ASTON 10	F95605	058C/10	2014-09-02	2024-09-02	3,088.8	1,250.0	Aston Bay Holdings Inc.
AB 1	K16471	058C/11	2012-09-12	2019-09-12	2,237.0	905.3	Aston Bay Holdings Inc.
AB 2	K16472	058C/11	2012-09-12	2019-09-12	1,331.0	538.6	Aston Bay Holdings Inc.
AB 3	K16473	058C/11	2012-09-12	2017-09-12	895.2	362.3	Aston Bay Holdings Inc.
AB 4	K16474	058C/11	2012-09-12	2018-09-12	2,582.5	1,045.1	Aston Bay Holdings Inc.
AB 5	K16475	058C/11	2012-09-12	2017-09-12	2,582.5	1,045.1	Aston Bay Holdings Inc.
AB 6	K16476	058C/11	2012-09-12	2017-09-12	2,582.5	1,045.1	Aston Bay Holdings Inc.
AB 7	K16477	058C/11	2012-09-12	2017-09-12	550.7	222.9	Aston Bay Holdings Inc.
AB 8	K16478	058C/11	2012-09-12	2017-09-12	1,506.0	609.5	Aston Bay Holdings Inc.
AB 9	K16479	058C/11	2012-09-12	2017-09-12	2,545.0	1,029.9	Aston Bay Holdings Inc.
AB 10	K16480	058C/11	2012-09-12	2018-09-12	2,582.5	1,045.1	Aston Bay Holdings Inc.
AB 11	K16481	058C/11	2012-09-12	2018-09-12	2,582.5	1,045.1	Aston Bay Holdings Inc.
AB 12	K16482	058C/11	2012-09-12	2018-09-12	2,582.5	1,045.1	Aston Bay Holdings Inc.
AB 13	K16483	058C/11	2012-09-12	2020-09-12	1,661.0	672.2	Aston Bay Holdings Inc.
AB 14	K16484	058C/11	2012-09-12	2017-09-12	2,189.0	885.9	Aston Bay Holdings Inc.
AB 15	K16485	058C/11	2012-09-12	2017-09-12	2,582.5	1,045.1	Aston Bay Holdings Inc.
AB 16	K16486	058C/11	2012-09-12	2018-09-12	2,582.5	1,045.1	Aston Bay Holdings Inc.
AB 17	K16487	058C/11	2012-09-12	2018-09-12	2,582.5	1,045.1	Aston Bay Holdings Inc.
AB 18	K16488	058C/11	2012-09-12	2022-09-12	2,582.5	1,045.1	Aston Bay Holdings Inc.
AB 19	K16489	058C/11	2012-09-12	2020-09-12	2,582.5	1,045.1	Aston Bay Holdings Inc.
AB 20	K16490	058C/11	2012-09-12	2022-09-12	2,582.5	1,045.1	Aston Bay Holdings Inc.
AB 21	K16491	058C/11	2012-09-12	2018-09-12	2,582.5	1,045.1	Aston Bay Holdings Inc.
AB 22	K16492	058C/11	2012-09-12	2018-09-12	2,582.5	1,045.1	Aston Bay Holdings Inc.
AB 23	K16493	058C/11	2012-09-12	2018-09-12	2,582.5	1,045.1	Aston Bay Holdings Inc.
AB 24	K16494	058C/11	2012-09-12	2022-09-12	2,582.5	1,045.1	Aston Bay Holdings Inc.
AB 25	K16495	058C/11	2012-09-12	2022-09-12	2,582.5	1,045.1	Aston Bay Holdings Inc.
AB 26	K16496	058C/11	2012-09-12	2021-09-12	2,582.5	1,045.1	Aston Bay Holdings Inc.
AB 27	K16497	058C/11	2012-09-12	2020-09-12	2,582.5	1,045.1	Aston Bay Holdings Inc.
AB 28	K16498	058C/11	2012-09-12	2017-09-12	2,582.5	1,045.1	Aston Bay Holdings Inc.
AB 29	K16499	058C/11	2012-09-12	2018-09-12	2,582.5	1,045.1	Aston Bay Holdings Inc.
AB 30	K16500	058C/11	2012-09-12	2020-09-12	2,582.5	1,045.1	Aston Bay Holdings Inc.
AB 31	K16501	058C/11	2012-09-12	2022-09-12	2,582.5	1,045.1	Aston Bay Holdings Inc.
AB 32	K16502	058C/11	2012-09-12	2022-09-12	2,582.5	1,045.1	Aston Bay Holdings Inc.
AB 33	K16503	058C/11	2012-09-12	2022-09-12	2,582.5	1,045.1	Aston Bay Holdings Inc.

N2015C0014 - 2018 CIRNAC Land Use Annual Report for the Aston Bay Property

Mineral Claims							
Claim Name	Claim Number	NTS Sheet	Recording Date	Anniversary Date	Area (acres)	Area (ha)	Owner Name
AB 34	K16504	058C/10,/11	2012-09-12	2018-09-12	2,582.5	1,045.1	Aston Bay Holdings Inc.
AB 35	K16505	058C/10,/11	2012-09-12	2022-09-12	2,582.5	1,045.1	Aston Bay Holdings Inc.
AB 36	K16506	058C/10,/11	2012-09-12	2022-09-12	2,582.5	1,045.1	Aston Bay Holdings Inc.
AB 37	K16507	058C/10,/11	2012-09-12	2022-09-12	2,582.5	1,045.1	Aston Bay Holdings Inc.
AB 38	K16508	058C/10	2012-09-12	2018-09-12	2,582.5	1,045.1	Aston Bay Holdings Inc.
AB 39	K16509	058C/10	2012-09-12	2018-09-12	2,582.5	1,045.1	Aston Bay Holdings Inc.
AB 40	K16510	058C/10	2012-09-12	2022-09-12	2,582.5	1,045.1	Aston Bay Holdings Inc.
AB 41	K16511	058C/10	2012-09-12	2022-09-12	2,582.5	1,045.1	Aston Bay Holdings Inc.
AB 42	K16512	058C/10	2012-09-12	2020-09-12	2,582.5	1,045.1	Aston Bay Holdings Inc.
AB 43	K16513	058C/10	2012-09-12	2022-09-12	2,582.5	1,045.1	Aston Bay Holdings Inc.
AB 44	K16514	058C/10	2012-09-12	2022-09-12	2,582.5	1,045.1	Aston Bay Holdings Inc.
AB 45	K16515	058C/10	2012-09-12	2020-09-12	2,582.5	1,045.1	Aston Bay Holdings Inc.
AB 46	K16516	058C/10	2012-09-12	2022-09-12	2,582.5	1,045.1	Aston Bay Holdings Inc.
AB 47	K16517	058C/10,/11	2012-09-12	2018-09-12	2,582.5	1,045.1	Aston Bay Holdings Inc.
AB 48	F96211	058C/14	2016-07-26	2018-07-26	3,088.8	1,250.0	Aston Bay Holdings Inc.
AB 49	F96212	058C/14	2016-07-26	2018-07-26	3,088.8	1,250.0	Aston Bay Holdings Inc.
AB 50	F96213	058C/14	2016-07-26	2018-07-26	3,088.8	1,250.0	Aston Bay Holdings Inc.
AB 51	F96214	058C/14	2016-07-26	2018-07-26	3,088.8	1,250.0	Aston Bay Holdings Inc.
AB 52	F96215	058C/14	2016-07-26	2018-07-26	3,088.8	1,250.0	Aston Bay Holdings Inc.
AB 53	F96216	058C/14	2016-07-26	2018-07-26	3,088.8	1,250.0	Aston Bay Holdings Inc.
AB 54	F96227	058C/14	2016-07-26	2018-07-26	3,088.8	1,250.0	Aston Bay Holdings Inc.
AB 55	F96228	058C/14	2016-07-26	2018-07-26	3,088.8	1,250.0	Aston Bay Holdings Inc.
AB 56	F96229	058C/14	2016-07-26	2018-07-26	3,088.8	1,250.0	Aston Bay Holdings Inc.
AB 57	F96230	058C/14	2016-07-26	2018-07-26	3,088.8	1,250.0	Aston Bay Holdings Inc.
AB 58	F96241	058C/14	2016-08-09	2018-08-09	3,088.8	1,250.0	Aston Bay Holdings Inc.
AB 59	F96242	058C/14	2016-08-09	2018-08-09	3,088.8	1,250.0	Aston Bay Holdings Inc.
AB 60	F96243	058C/14	2016-08-09	2018-08-09	3,088.8	1,250.0	Aston Bay Holdings Inc.
AB 61	F96244	058C/14	2016-08-09	2018-08-09	3,088.8	1,250.0	Aston Bay Holdings Inc.
AB 62	F96245	058C/14	2016-07-26	2018-07-26	3,051.2	1,234.8	Aston Bay Holdings Inc.
AB 63	F96246	058C/14	2016-07-26	2018-07-26	3,088.8	1,250.0	Aston Bay Holdings Inc.
AB 64	F96247	058C/14	2016-07-26	2018-07-26	3,088.8	1,250.0	Aston Bay Holdings Inc.
AB 65	F96248	058C/14	2016-08-09	2018-08-09	2,951.8	1,194.6	Aston Bay Holdings Inc.
AB 66	F96249	058C/14	2016-08-09	2018-08-09	2,762.7	1,118.0	Aston Bay Holdings Inc.
AB 67	F96250	058C/14	2016-08-09	2018-08-09	3,088.8	1,250.0	Aston Bay Holdings Inc.
AB 68	F96251	058C/13,/14	2016-07-26	2018-07-26	2,545.2	1,030.0	Aston Bay Holdings Inc.
AB 69	F96252	058C/13,/14	2016-07-26	2018-07-26	2,496.8	1,010.4	Aston Bay Holdings Inc.
AB 70	F96253	058C/13,/14	2016-07-26	2018-07-26	1,632.5	660.7	Aston Bay Holdings Inc.
AB 71	F96254	058C/13,/14	2016-07-26	2018-07-26	1,153.0	466.6	Aston Bay Holdings Inc.
AB 72	F96255	058C/13,/14	2016-07-26	2018-07-26	3,088.8	1,250.0	Aston Bay Holdings Inc.
AB 73	F96256	058C/13,/14	2016-07-26	2018-07-26	3,088.8	1,250.0	Aston Bay Holdings Inc.
AB 74	F96257	058C/13	2016-07-26	2018-07-26	1,359.8	550.3	Aston Bay Holdings Inc.
AB 75	F96258	058C/13	2016-07-26	2018-07-26	1,959.5	793.0	Aston Bay Holdings Inc.
AB 76	F96259	058C/13	2016-07-26	2018-07-26	2,899.1	1,173.2	Aston Bay Holdings Inc.
AB 77	F96260	058C/13	2016-07-26	2018-07-26	3,088.8	1,250.0	Aston Bay Holdings Inc.
AB 78	F96261	058C/13	2016-07-26	2018-07-26	3,088.8	1,250.0	Aston Bay Holdings Inc.

N2015C0014 - 2018 CIRNAC Land Use Annual Report for the Aston Bay Property

Mineral Claims							
Claim Name	Claim Number	NTS Sheet	Recording Date	Anniversary Date	Area (acres)	Area (ha)	Owner Name
AB 79	F96262	058C/13	2016-07-26	2018-07-26	715.1	289.4	Aston Bay Holdings Inc.
AB 80	F96263	058C/13	2016-07-26	2018-07-26	3,087.8	1,249.6	Aston Bay Holdings Inc.
AB 81	F96264	058C/13	2016-07-26	2018-07-26	2,881.1	1,166.0	Aston Bay Holdings Inc.
AB 82	F96265	058C/13, 058F/04	2016-07-26	2018-07-26	1,032.6	417.9	Aston Bay Holdings Inc.
AB 84	F96267	058C/11	2016-08-09	2018-08-09	3,088.8	1,250.0	Aston Bay Holdings Inc.
AB 85	F96268	058C/11	2016-08-10	2018-08-10	3,088.8	1,250.0	Aston Bay Holdings Inc.
AB 86	F96269	058C/11	2016-08-10	2018-08-10	3,088.8	1,250.0	Aston Bay Holdings Inc.
AB 87	F96270	058C/11	2016-08-10	2018-08-10	3,088.8	1,250.0	Aston Bay Holdings Inc.
AB 88	F96271	058C/11	2016-08-10	2018-08-10	3,088.8	1,250.0	Aston Bay Holdings Inc.
AB 89	F96272	058C/11	2016-08-10	2018-08-10	3,088.8	1,250.0	Aston Bay Holdings Inc.
AB 90	F96273	058C/11	2016-08-10	2018-08-10	3,088.8	1,250.0	Aston Bay Holdings Inc.
AB 91	F96274	058C/11	2016-08-10	2018-08-10	3,088.8	1,250.0	Aston Bay Holdings Inc.
AB 92	F96275	058C/11	2016-08-09	2018-08-09	3,088.8	1,250.0	Aston Bay Holdings Inc.
AB 93	F96276	058C/11	2016-08-09	2018-08-09	3,088.8	1,250.0	Aston Bay Holdings Inc.
AB 94	F96277	058C/11	2016-08-09	2018-08-09	3,088.8	1,250.0	Aston Bay Holdings Inc.
AB 95	F96278	058C/11	2016-08-09	2018-08-09	3,088.8	1,250.0	Aston Bay Holdings Inc.
AB 96	F96279	058C/11	2016-08-09	2018-08-09	3,088.8	1,250.0	Aston Bay Holdings Inc.
AB 97	F96280	058C/06,/11	2016-08-10	2018-08-10	3,088.8	1,250.0	Aston Bay Holdings Inc.
AB 98	K90268	058C/11	2016-08-09	2018-08-09	3,088.8	1,250.0	Aston Bay Holdings Inc.
AB 99	K90269	058C/11	2016-08-09	2018-08-09	3,088.8	1,250.0	Aston Bay Holdings Inc.
AB 100	K90270	058C/11	2016-08-09	2018-08-09	3,088.8	1,250.0	Aston Bay Holdings Inc.
AB 101	K90271	058C/11	2016-08-09	2018-08-09	3,088.8	1,250.0	Aston Bay Holdings Inc.
AB 102	K90272	058C/11	2016-08-09	2018-08-09	3,088.8	1,250.0	Aston Bay Holdings Inc.
AB 103	K90273	058C/06,/11	2016-08-10	2018-08-10	3,088.8	1,250.0	Aston Bay Holdings Inc.
AB 104	K90274	058C/11	2016-08-09	2018-08-09	3,088.8	1,250.0	Aston Bay Holdings Inc.
AB 105	K90275	058C/11	2016-08-09	2018-08-09	3,088.8	1,250.0	Aston Bay Holdings Inc.
AB 106	K90276	058C/11	2016-08-09	2018-08-09	3,088.8	1,250.0	Aston Bay Holdings Inc.
AB 107	K90277	058C/11	2016-08-09	2018-08-09	3,088.8	1,250.0	Aston Bay Holdings Inc.
AB 108	K90278	058C/11	2016-08-09	2018-08-09	3,088.8	1,250.0	Aston Bay Holdings Inc.
AB 109	K90279	058C/06,/11	2016-08-10	2018-08-10	3,088.8	1,250.0	Aston Bay Holdings Inc.
AB 110	K90280	058C/10	2016-08-09	2018-08-09	3,088.8	1,250.0	Aston Bay Holdings Inc.
AB 111	K90281	058C/10	2016-08-09	2018-08-09	3,088.8	1,250.0	Aston Bay Holdings Inc.
AB 112	K90282	058C/07,/10	2016-08-09	2018-08-09	3,088.8	1,250.0	Aston Bay Holdings Inc.
AB 113	K90283	058C/07,/10	2016-08-09	2018-08-09	3,088.8	1,250.0	Aston Bay Holdings Inc.
AB 114	K90284	058C/07,/10	2016-08-09	2018-08-09	3,088.8	1,250.0	Aston Bay Holdings Inc.
AB 115	K90285	058C/10	2016-08-09	2018-08-09	3,088.8	1,250.0	Aston Bay Holdings Inc.
AB 116	K90286	058C/10	2016-08-09	2018-08-09	3,088.8	1,250.0	Aston Bay Holdings Inc.
AB 117	K90287	058C/10	2016-08-09	2018-08-09	3,088.8	1,250.0	Aston Bay Holdings Inc.
AB 118	K90288	058C/10	2016-08-09	2018-08-09	3,088.8	1,250.0	Aston Bay Holdings Inc.
AB 119	K90289	058C/10	2016-08-09	2018-08-09	3,088.8	1,250.0	Aston Bay Holdings Inc.
AB 120	K90290	058C/10	2016-08-09	2018-08-09	3,088.8	1,250.0	Aston Bay Holdings Inc.
AB 121	K90291	058C/10	2016-08-09	2018-08-09	3,088.8	1,250.0	Aston Bay Holdings Inc.
AB 122	K90292	058C/10	2016-08-09	2018-08-09	3,088.8	1,250.0	Aston Bay Holdings Inc.
AB 123	K90293	058C/10	2016-08-09	2018-08-09	3,088.8	1,250.0	Aston Bay Holdings Inc.
AB 124	K90294	058C/07,/10	2016-08-09	2018-08-09	3,088.8	1,250.0	Aston Bay Holdings Inc.

N2015C0014 - 2018 CIRNAC Land Use Annual Report for the Aston Bay Property

Mineral Claims							
Claim Name	Claim Number	NTS Sheet	Recording Date	Anniversary Date	Area (acres)	Area (ha)	Owner Name
AB 125	K90295	058C/14	2016-08-09	2018-08-09	3,088.8	1,250.0	Aston Bay Holdings Inc.
				Claim Total:	369,643.9	149,589.8	

Prospecting Permits						
Permit Number	NTS Sheet	Issue Date	Expiry Date	Area (acres)	Area (ha)	Owner Name
P-12	058B/15	2015-02-01	2020-01-31	41,647.1	16,854.0	Aston Bay Holdings Inc.
P-13	058B/15	2015-02-01	2020-01-31	56,423.3	22,833.7	Aston Bay Holdings Inc.
P-14	058C/02	2015-02-01	2020-01-31	56,023.0	22,671.7	Aston Bay Holdings Inc.
P-15	058C/07	2015-02-01	2020-01-31	55,221.6	22,347.4	Aston Bay Holdings Inc.
P-16	058C/07	2015-02-01	2020-01-31	54,820.4	22,185.1	Aston Bay Holdings Inc.
P-17	058C/02	2015-02-01	2020-01-31	55,622.4	22,509.6	Aston Bay Holdings Inc.
P-26	058B/14	2016-02-01	2021-01-31	56,824.8	22,996.2	Aston Bay Holdings Inc.
P-27	058C/06	2016-02-01	2021-01-31	55,223.0	22,348.0	Aston Bay Holdings Inc.
P-28	058C/03	2016-02-01	2021-01-31	55,623.8	22,510.2	Aston Bay Holdings Inc.
P-29	058C/03	2016-02-01	2021-01-31	56,024.4	22,672.3	Aston Bay Holdings Inc.
P-30	058B/14	2016-02-01	2021-01-31	56,424.8	22,834.3	Aston Bay Holdings Inc.
P-31	058C/06	2016-02-01	2021-01-31	54,821.8	22,185.6	Aston Bay Holdings Inc.
			Permit Total:	654,700.5	264,948.1	

Appendix 2 - 2018 Exploration Program Personnel

Name	Position	Company
Thomas Ullrich	CEO, Director	Aston Bay Holdings Ltd.
David Broughton	Chief Geologist	Aston Bay Holdings Ltd.
Sarah Clay	Geologist	Aston Bay Holdings Ltd.
Jordan Mathieu	Geologist	Aston Bay Holdings Ltd.
Quinn Dabros	Geologist	Aston Bay Holdings Ltd.
Sofia Harquail	Geotech	Aston Bay Holdings Ltd.
Mike Dufresne	President	APEX Geoscience Ltd.
Chris Livingstone	Project Geologist	APEX Geoscience Ltd.
Robyn Christian	Geotech / OFA	APEX Geoscience Ltd.
Sylvie Laberge	Cook / OFA	APEX Geoscience Ltd.
Annie	Relief Cook	Atco Structures & Logistics
David Scott	Camp Foreman	Discovery Mining Services Ltd.
Rod Davidson	Camp Builder	Discovery Mining Services Ltd.
Uyarrai Kameemalik	Camp Builder	Discovery Mining Services Ltd.
Luc Carriere	Camp Builder	Discovery Mining Services Ltd.
Mike Knox	Twin Otter Pilot	Kenn Borek Air Ltd.
Alex Baez	Twin Otter Pilot	Kenn Borek Air Ltd.
Jim Haffe	Twin Otter Pilot	Kenn Borek Air Ltd.
Ty Kehoe	Twin Otter Pilot	Kenn Borek Air Ltd.
Brian Good	Twin Otter Pilot	Kenn Borek Air Ltd.
Addison Payne	Twin Otter Pilot	Kenn Borek Air Ltd.
Jorge Barreto	Twin Otter Pilot	Kenn Borek Air Ltd.
Chris Bracker	Twin Otter Pilot	Kenn Borek Air Ltd.
Dany Gallant	Helicopter Pilot	Panorama Helicopters Ltd.
Martin Bechard	Helicopter Pilot	Panorama Helicopters Ltd.
Daniel Belanger	Helicopter Pilot	Panorama Helicopters Ltd.
Martin Camirand	Helicopter Pilot	Panorama Helicopters Ltd.
Francis Mathieu	Helicopter Pilot	Panorama Helicopters Ltd.
Patrick Cote	Helicopter Pilot	Panorama Helicopters Ltd.
Philippe Pedneault	Helicopter Engineer	Panorama Helicopters Ltd.
Serge Blouin	Helicopter Engineer	Panorama Helicopters Ltd.
Ryan Eckalook	Bear Guard	South Camp Enterprises
Toomasie Kaliuk	Bear Guard	South Camp Enterprises
Nathaniel Akumalik	Bear Guard	South Camp Enterprises
Richard Inootik	Bear Guard	South Camp Enterprises
James Hunter	Bear Guard	South Camp Enterprises
Stephen Attagootak	Bear Guard	South Camp Enterprises
Brandy Iqaluk	Camp Attendant	South Camp Enterprises

N2015C0014 - 2018 CIRNAC Land Use Annual Report for the Aston Bay Property

Name	Position	Company
Melina Idlout	Camp Attendant	South Camp Enterprises
Uluriak Amarualik	Camp Attendant	South Camp Enterprises
Emily Amarualik	Camp Attendant	South Camp Enterprises
Devon Rank	Foreman	Top Rank Diamond Drilling Ltd.
Dale Vandepoele	Foreman	Top Rank Diamond Drilling Ltd.
Jordan Neault	Driller	Top Rank Diamond Drilling Ltd.
Chad Brown	Driller	Top Rank Diamond Drilling Ltd.
Kelly Parlow	Driller	Top Rank Diamond Drilling Ltd.
Greg Vandepoele	Driller	Top Rank Diamond Drilling Ltd.
Eric Lopez	Driller	Top Rank Diamond Drilling Ltd.
Devin Andrews-Bruce	Driller	Top Rank Diamond Drilling Ltd.
Patrick Hines	Driller	Top Rank Diamond Drilling Ltd.
Tyson Chacula	Driller	Top Rank Diamond Drilling Ltd.
Rob Ames	Driller Helper	Top Rank Diamond Drilling Ltd.
Trevor Somma	Driller Helper	Top Rank Diamond Drilling Ltd.
Brad Chuipka	Driller Helper	Top Rank Diamond Drilling Ltd.
Dean Frobisher	Driller Helper	Top Rank Diamond Drilling Ltd.
Jonas Quaal	Driller Helper	Top Rank Diamond Drilling Ltd.
Donell Nice	5 th Man	Top Rank Diamond Drilling Ltd.
Jevon Vandepoele	5 th Man	Top Rank Diamond Drilling Ltd.

Appendix 3 – 2018 Aston Bay Property Photos



Photo 1: Storm Camp during operations - aerial (looking northeast)



Photo 2: Storm Camp during demobilization – south side of camp (looking west)



Photo 3: Storm Camp during demobilization – main street (looking west)



Photo 4: Storm Camp during demobilization – main street (looking east)



Photo 5: Tent drum in secondary containment berm. Fittings are wrapped in absorbent matting.



Photo 6: Storm Camp jet fuel cache after shutdown (looking east)



Photo 7: Storm Camp diesel/gas fuel cache after shutdown (looking east)



Photo 8: Drill Pad AB18-01/01B



Photo 9: Drill Pad AB18-02/02B/02C



Photo 10: Drill Pad AB18-03



Photo 11: Drill Pad AB18-04



Photo 12: Drill Pad AB18-05



Photo 13: Drill Pad AB18-06/06B



Photo 14: Drill Pad AB18-07



Photo 15: Drill Pad AB18-08



Photo 17: Drill Pad AB18-09 (drill stored on site – materials subsequently tidied up, all fuel & oil drained from equipment)

Appendix 4 – Storm Camp 2018 Water Usage

Date	Tank 1 (250 gal) Volume (gal)	Tank 2 (350 gal) Volume (gal)	Tank 1 (250 gal) Volume (m3)	Tank 2 (350 gal) Volume (m3)	Total Use (m3)
24-Jun-18	250	350	0.95	1.32	2.27
25-Jun-18	0	0	0.00	0.00	0.00
26-Jun-18	0	0	0.00	0.00	0.00
27-Jun-18	0	300	0.00	1.14	1.14
28-Jun-18	0	300	0.00	1.14	1.14
29-Jun-18	0	0	0.00	0.00	0.00
30-Jun-18	250	200	0.95	0.76	1.70
01-Jul-18	50	300	0.19	1.14	1.32
02-Jul-18	200	300	0.76	1.14	1.89
03-Jul-18	150	200	0.57	0.76	1.32
04-Jul-18	0	0	0.00	0.00	0.00
05-Jul-18	300	200	1.14	0.76	1.89
06-Jul-18	150	150	0.57	0.57	1.14
07-Jul-18	125	225	0.47	0.85	1.32
08-Jul-18	150	200	0.57	0.76	1.32
09-Jul-18	100	200	0.38	0.76	1.14
10-Jul-18	150	200	0.57	0.76	1.32
11-Jul-18	50	200	0.19	0.76	0.95
12-Jul-18	150	200	0.57	0.76	1.32
13-Jul-18	100	150	0.38	0.57	0.95
14-Jul-18	250	200	0.95	0.76	1.70
15-Jul-18	150	200	0.57	0.76	1.32
16-Jul-18	200	250	0.76	0.95	1.70
17-Jul-18	150	200	0.57	0.76	1.32
18-Jul-18	200	200	0.76	0.76	1.51
19-Jul-18	150	150	0.57	0.57	1.14
20-Jul-18	225	250	0.85	0.95	1.80
21-Jul-18	250	250	0.95	0.95	1.89
22-Jul-18	200	250	0.76	0.95	1.70
23-Jul-18	150	250	0.57	0.95	1.51
24-Jul-18	150	200	0.57	0.76	1.32
25-Jul-18	150	250	0.57	0.95	1.51
26-Jul-18	150	250	0.57	0.95	1.51
27-Jul-18	100	200	0.38	0.76	1.14
28-Jul-18	200	200	0.76	0.76	1.51
29-Jul-18	200	250	0.76	0.95	1.70
30-Jul-18	150	200	0.57	0.76	1.32
31-Jul-18	150	250	0.57	0.95	1.51

Date	Tank 1 (250 gal) Volume (gal)	Tank 2 (350 gal) Volume (gal)	Tank 1 (250 gal) Volume (m3)	Tank 2 (350 gal) Volume (m3)	Total Use (m3)
01-Aug-18	200	200	0.76	0.76	1.51
02-Aug-18	150	200	0.57	0.76	1.32
03-Aug-18	200	200	0.76	0.76	1.51
04-Aug-18	150	200	0.57	0.76	1.32
05-Aug-18	200	250	0.76	0.95	1.70
06-Aug-18	200	200	0.76	0.76	1.51
07-Aug-18	200	250	0.76	0.95	1.70
08-Aug-18	150	250	0.57	0.95	1.51
09-Aug-18	200	200	0.76	0.76	1.51
10-Aug-18	200	250	0.76	0.95	1.70
11-Aug-18	200	200	0.76	0.76	1.51
12-Aug-18	150	250	0.57	0.95	1.51
13-Aug-18	200	250	0.76	0.95	1.70
14-Aug-18	200	200	0.76	0.76	1.51
15-Aug-18	250	250	0.95	0.95	1.89
Total	8,200	11,025	31.04	41.73	72.77

Appendix 5 – Inspection Reports



☒ Original

☐ Follow-Up Report

CROWN LAND USE INSPECTION FORM

Permittee	Representative
APEX geoscience	Christopher Livingstone
Permit No. / Expiry	Representative's Title
N2015C0014	N/A
Other Authorizations	Land / Other Authorizations
Date of Inspection	Inspector
July 25, 2018	Jonathan Mesher
Activities Inspected	
<input type="checkbox"/> Camp <input type="checkbox"/> Drilling <input type="checkbox"/> Mining <input type="checkbox"/> Construction <input type="checkbox"/> Reclamation <input type="checkbox"/> Fuel Storage	
<input type="checkbox"/> Roads/hauling <input type="checkbox"/> Other: <input type="checkbox"/> Other:	

Conditions:

A- Acceptable

U-Unacceptable

C-Concern

NI-Not Inspected

NA- Not applicable

Land Use Permit __N2015C0014:	Term No.*	Condition	Observation No.
31 (1)(a) Location and Area		A	
31 (1)(b) Time		A	
31 (1)(c) Equipment		A	
31 (1)(d) Methods and Techniques		A	
31 (1)(e) Type location, capacity and operation of facility		A	
31 (1)(f) Control or prevent of flooding, erosion, and subsidence of Land		A	
31 (1)(g) Use, storage, handling and disposal of chemical or toxic materials	36,37,38	C	
31 (1)(h) Wildlife and fisheries habitat		A	
31 (1)(i) Objects and places of recreation, scenic and ecological value		A	
31 (1)(k) Petroleum fuel storage	63,66	C	
31 (1)(m) Matters not inconsistent with the regulations		A	
Lease # _____:	Term No.*	Condition	Observation No.
Term			
Rent and Taxes			
Use			
Assignments			
Breach			
Termination			
Reclamation			
Environmental			
Fuel and Hazardous Chemicals			
Boundaries/Survey			
Improvements			
Access			
Indemnification			
Notices			
Archeology			
General			

* refers to specific terms and conditions found in the permit/lease in question.

SECTION 1	<input checked="" type="checkbox"/> Comments (s.1)	<input type="checkbox"/> Non-Compliance with Permit, Act or Regs (s.2)	<input type="checkbox"/> Action Required (s.3)
<p>On July 25, 2018 an Inspection was conducted of the Land Use Permit (LUP) N2015C0014, The Project Is located approximately 110 km south of Resolute Bay NU, at N 73°39.4504' X W94°27.1407' adjacent to the Aston river on Somerset Island.</p> <p>Inspection:</p> <ul style="list-style-type: none">The main camp is located in the Aston River, river valley, at the time of the inspection the site was clean with no concerns were noted about the location of this camp.All secondary containment appeared to be used at all storages of fuel.The Kitchen tent and two wash tents had pipes leading to sumps constructed of wood walls, it appears the sumps are operating as intended and the waste does not appears capable of flowing directly into water or spreading to surrounding lands.			



- The previous inspector and the permittee had agreed to deposit drill cuttings in porous boulder fields, I am recommending that the Licensee use sumps as required in this permit. The use of sumps will help to ensure that the drill cutting so not spread to surrounding lands.
- The licensee is still in the process of remediating old drill collars from exploration that occurred in the 1970's.
- At the time of the inspection the licensee was storing fuel outside their bear fence, Item 63, of the LUP N2015C0014 states that "the permittee shall store fuel and chemicals in such a manner that it is inaccessible to wildlife.", It is recommended that the licensee consult with the Engineer of Lands at CIRNAC to determine the extent of the inaccessibility to wildlife is required.
- During the inspection it was noted that three (3) small fuel containers were left open, this is in contradiction of, item 66, of the permit N2018N0004 which states; "the permittee shall seal all container outlets except the outlet currently in use." The licensee was informed of this issue at the time of the inspection and was encouraged to ensure all employees are aware of the terms and conditions of their LUP.


SECTION 2

☐ Comments

☐ Non-Compliance with Permit, Act or Regs

☒ Action Required

- The permittee is to start using sumps at the drill sites and ensure that drill waste is deposited at least 1.2m below the lowest elevation of the contiguous surrounding. This is required in items; 23, 36, 37 and 37. See figure 4 for a photo of the current disposal of drill cuttings.
- The permittee is to consult with the Engineer of Lands regarding the extent of wildlife inaccessibility required in Item 63. See figure 2 and 3 for fuel storage
- The Permittee is to ensure all fuel containers are sealed when not in use. See figure 1 for containers not sealed.

Licensee or Representative	Inspector's Name
APEX Geoscience	Jonathan Mesher
Signature	Signature
	
Date	Date
	September 4, 2018

Office Use Only:

Follow-up report to be issued by Inspector

☐ Yes ☐ No



Date	Camera	Inspector	Authorization
		J.Mesher	N2015C0014
Photo Log		Location N 73°39.4504' X W94°27.1407	



Figure 1: Containers not sealed



Figure 2: Jet fuel



Figure 3: Oil and Grease storage



Figure 4: drill cuttings not disposed into a sump



WATER LICENCE INSPECTION FORM

☒ Original
☐ Follow-Up Report

Licensee		Licensee Representative	
Christopher Livingstone		Christopher Livingstone	
Licence No. / Expiry		Representative's Title	
2BE-STO1520		Project Geologist	
Land / Other Authorizations		Land / Other Authorizations	
N2015C0014			
Date of Inspection		Inspector	
July 25, 2018		Jonathan Mesher	
Activities Inspected			
<input checked="" type="checkbox"/> Camp	<input checked="" type="checkbox"/> Drilling	<input type="checkbox"/> Mining	<input type="checkbox"/> Construction
<input type="checkbox"/> Roads/Hauling	<input type="checkbox"/> Other: Water Discharge	<input type="checkbox"/> Reclamation	<input checked="" type="checkbox"/> Fuel Storage
<input type="checkbox"/> Other: Municipal			

Conditions:		A - Acceptable	C - Concern	U - Unacceptable	NA – Not Applicable	NI – Not Inspected
Water Use		Site Conditions		Haz/Mat Management		
	Condition	Comment		Condition	Comment	Condition
Intake/Screen	A		Water Management Structures	NA		Storage
Flow Measure. Device	A		Culverts / Bridges	NA		Spills
Source: Aston River	A		Drainage	NA		Spill Plan
Water Use:	A		Erosion / Sediment	NA		
Recirculation (y /n)	NA		Mitigation Measures	NA		Administrative
			Reclamation Activities	NA		Records
			Materials Storage	A		Reports
Waste Disposal			Signage	A		Plans
Waste Water	A					Notifications
Solid Waste	A		Monitoring		Other	
Hazardous Waste	NI		Sample Collection / Analysis	A		
*The number in the comments field will correspond with specific comments provided below.						
Samples taken by Inspector:		Location(s):				
<input type="checkbox"/> Yes <input checked="" type="checkbox"/> No						

SECTION 1	<input checked="" type="checkbox"/> Comments (s.____)	<input type="checkbox"/> Non-Compliance with Act or Licence (s.____)	<input type="checkbox"/> Action Required (s.____)
<p>On July 25, 2018 an Inspection was conducted of the Water licence 2BE-STO including the Camp, lay down areas, fuel containment structures and drilling activities.</p> <p>The Project Is licensed for up to 2 cubic meters of water per day for camp use as well as 15 cubic meters per day of water for drilling activities. The Camp is located approximately 110 km south of Resolute Bay nu, at N 73°39.4504' X W94°27.1407' adjacent to the Aston river on Somerset Island.</p> <p>Inspection:</p> <p>Water usage</p> <ul style="list-style-type: none">The main camp uses water from the Aston River and the drill sites use water from surrounding water bodies.A mesh screen was installed at the locations where water was being drawn.No concerns were noted regarding the usage of water at the camp or drill sites. <p>Waste Disposal/ storage</p> <ul style="list-style-type: none">Secondary containment appeared to be used at all storages of fuel; no concerns were noted regarding the licensee's storage of fuel.The Kitchen tent and two wash tents had pipes leading to sumps constructed of wood walls, it appears the sumps are operating as intended and the waste does not appears capable of flowing directly into water.The previous inspector and the licensee had agreed to deposit drill cuttings in porous boulder fields, I am recommending that the Licensee use sumps to ensure that the drill cutting so not enter surrounding water bodies.The licensee is still in the process of remediating old drill collars from exploration that occurred in the 1970's.			



SECTION 2

☐ Comments (s. __)

☐ Non-Compliance with Act or Licence (s. __)

☒ Action Required (s. __)

- The only Action required at this time is to discontinue the practice of depositing cuttings into a boulder fields and start using sumps.

Photo Log

Date	Authorization	Camera	Inspector
July 25,2018	2BE-STO1520	Sony Cyber shot	J.Mesher



Figure 1: Sleeping tent heating fuel.

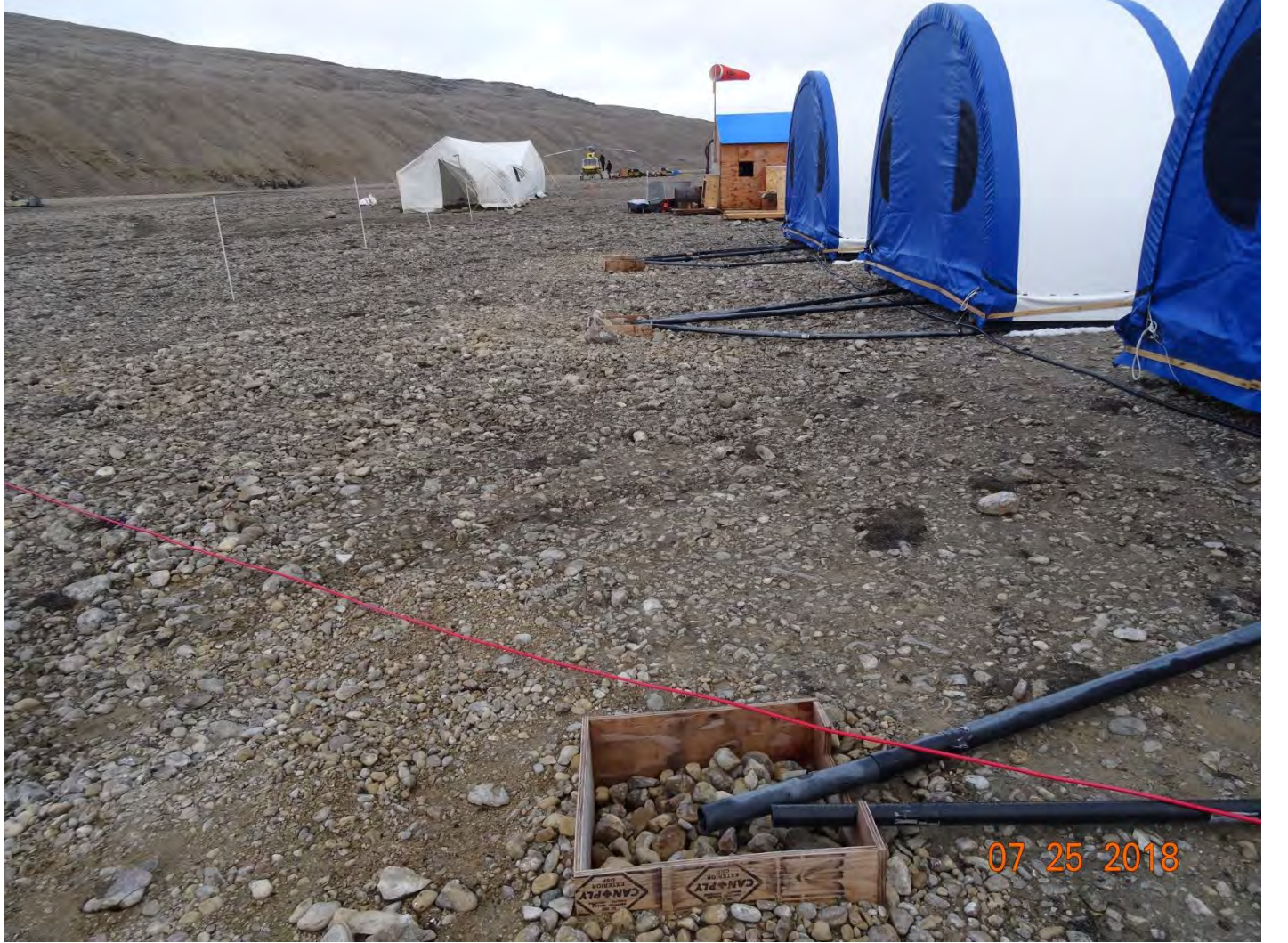




Figure 2: Sumps.



Figure 3: Fuel storage.



Figure 4: oil and grease storage.



Figure 5: drill site

Licensee or Representative	Inspector's Name
	Jonathan Mesher
Signature	Signature
Date	Date
	10/15/2018

Office Use Only:	Follow-up report to be issued by Inspector	<input type="checkbox"/> Yes <input checked="" type="checkbox"/> No
------------------	--	---