

N2021C0004
2022 CIRNAC LAND USE ANNUAL REPORT

**FOR THE ASTON BAY PROPERTY
(ALSO KNOWN AS THE STORM PROPERTY)
NUNAVUT, CANADA**

Prepared For:

Aston Bay Holdings Ltd.
204-80 Richmond Street West
Toronto, ON M5H 2A4

Prepared By:

APEX Geoscience Ltd.
410-800 West Pender Street
Vancouver, BC V6C 2V6

March 2023

Table of Contents

1	Summary	1
2	Introduction	2
3	Land Use Area Description and Location.....	2
4	2022 Exploration Program	5
5	Personnel	5
6	Land Use	7
6.1	Camp & Waste.....	7
6.2	Fuel Storage	9
6.3	Flights.....	9
6.4	Drilling.....	10
6.5	Archaeological Sites.....	11
6.6	Inuit Owned Land.....	11
7	Wildlife and Environment.....	11
8	Reclamation Work	12
9	Waste Disposal	12
10	Inspections	12
11	2023 Work Plan	12

Tables

Table 1 Storm Camp Remaining Structures August 22, 2022	7
Table 2 Storm Camp Remaining Equipment August 22, 2022	8
Table 3 Storm Camp Fuel Inventory August 22, 2022	9
Table 4 Remaining Drill Equipment August 22, 2022	10
Table 5 Remaining Drill Consumables August 22, 2022.....	11

Figures

Figure 1 Aston Bay Property Location.....	3
Figure 2 Aston Bay Property Mineral Tenure Map	4
Figure 3 Seal Zinc Deposit TDEM Survey.....	6
Figure 4 Storm Copper TDEM Survey.....	Error! Bookmark not defined.

Appendices

Appendix 1 2021 Aston Bay Property Mineral Claims and Prospecting Permits.....	14
Appendix 2 2021 Field Personnel.....	18
Appendix 3 2021 Aston Bay Property Photos	19
Appendix 4 2021 Storm Camp Water Usage	22

1 Summary

CIRNAC Land Use Permit Number: **N2021C0004**

NWB Water Licence Number: **2BE-STO2025**

Work Completed: Drilling

Dates Work Completed: July 7, 2022 to August 25, 2022

Property Location: NTS 058C02, 058C03, 058C06, 058C07, 058C10, 058C11, 058C13, 058C14;
Somerset Island, Nunavut, Canada

Storm Camp Location: 73°39'23" N latitude; 94°27'07" W longitude

2 Introduction

The Aston Bay Property is located on northern Somerset Island, Nunavut in the Canadian Arctic Archipelago (Figure 1). The nearest community is the hamlet of Resolute Bay, located 112 km north of the Property, on Cornwallis Island. The Property is approximately 1,500 km northwest of Iqaluit, the capital of Nunavut, and about 1,500 km northeast of Yellowknife, Northwest Territories. The Aston Bay Property includes the Seal Zinc prospect and multiple copper-silver showings (2200N, 2750N, 3500N, and 4100N zones), collectively known as the Storm Copper prospect. The Storm Copper prospect is associated with a regional graben structure known as the Central Graben.

The 2022 Aston Bay Property exploration drilling program was completed between July 7 and August 25, 2022, including mobilization and demobilization. A total of 1534.6 m of drilling was completed in 10 holes by drilling contractor Top Rank Diamond Drilling Ltd. (“Top Rank”). Drilling was carried out within claims 100085 and 100090, with 9 of the 10 holes completed on claim 100090. The program was supervised by personnel from Aston Bay Holdings Ltd. (“Aston Bay”) and APEX Geoscience Ltd. (“APEX”). All personnel were based out of Storm Camp located at approximately 73°39’23” N latitude and 94°27’07” W longitude.

3 Land Use Area Description and Location

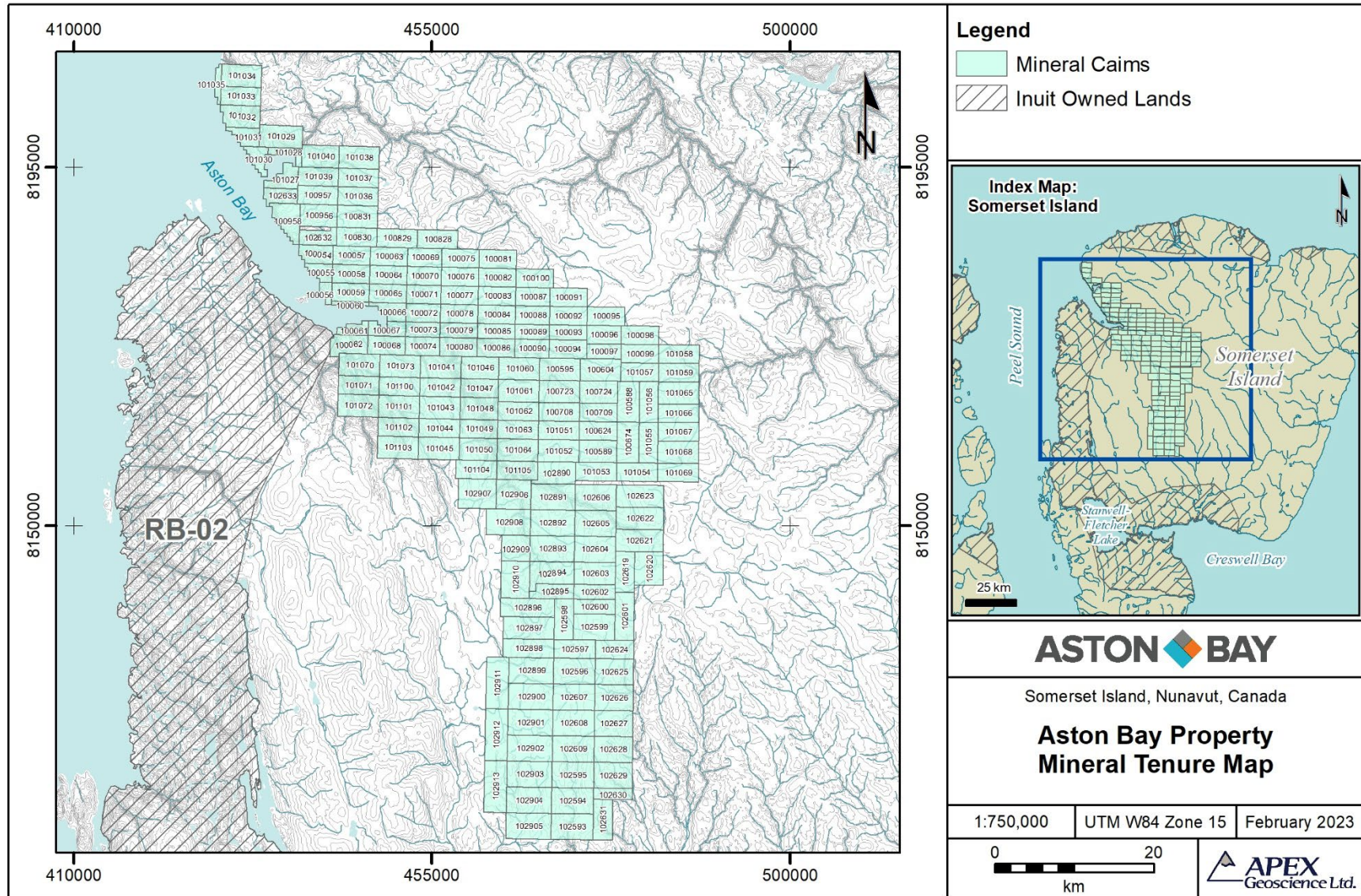
The Aston Bay Property is situated in the Qikiqtaaluk Region of Nunavut, within the 1:50,000 scale NTS (National Topographic System) map sheets 058C02, 03, 06, 07, 10, 11, 13 and 14. The Property comprises 173 contiguous mineral claims (Figure 2; Appendix 1).

The Aston Bay Property covers a combined area of approximately 219,256.7 ha. The Property is bound by latitudes 72°05’ N and 73°57’ N, and longitudes 93°21’ W and 95°21’ W, and is centered at approximately 73°31’ N latitude and 94°20’ W longitude.

Figure 1 Aston Bay Property Location



Figure 2 Aston Bay Property Mineral Tenure Map



4 2022 Exploration Program

The 2022 exploration program was completed between July 7 and August 25, 2022. A notice of commencement was sent to CIRNAC at aadnc.landmining.aandc@canada.ca on June 14, 2022.

All exploration work was conducted within mineral claims 100085 and 100090. All drilling was helicopter supported and based out of Storm Camp, located at approximately 73°39'23" N latitude and 94°27'07" W longitude. The 2022 program was managed by Aston Bay and APEX personnel, and executed by APEX personnel and Top Rank Drilling. A Bell 407 helicopter and a AS350 B2 helicopter were contracted from Custom Helicopters Ltd. of St. Andrews, MB. Fixed-wing support was provided by Kenn Borek Air Ltd. of Calgary, AB. Camp services and logistical support was provided by South Camp Enterprises of Resolute Bay, NU, Atco Structures & Logistics of Resolute Bay, NU, Complete Safety Services Inc. of Fort St. John, BC, Rugged Edge Holdings Ltd. of Smithers, BC, and Discovery Mining Services Ltd. of Yellowknife, NT.

The exploration program comprised of 1534.6 m of diamond drilling in 10 holes (Table 1; Figure 3), targeting the 2750N Zone (drill holes ST22-01 to ST22-08) and two electromagnetic (EM) geophysical anomalies (drill holes ST22-09 and ST22-10).

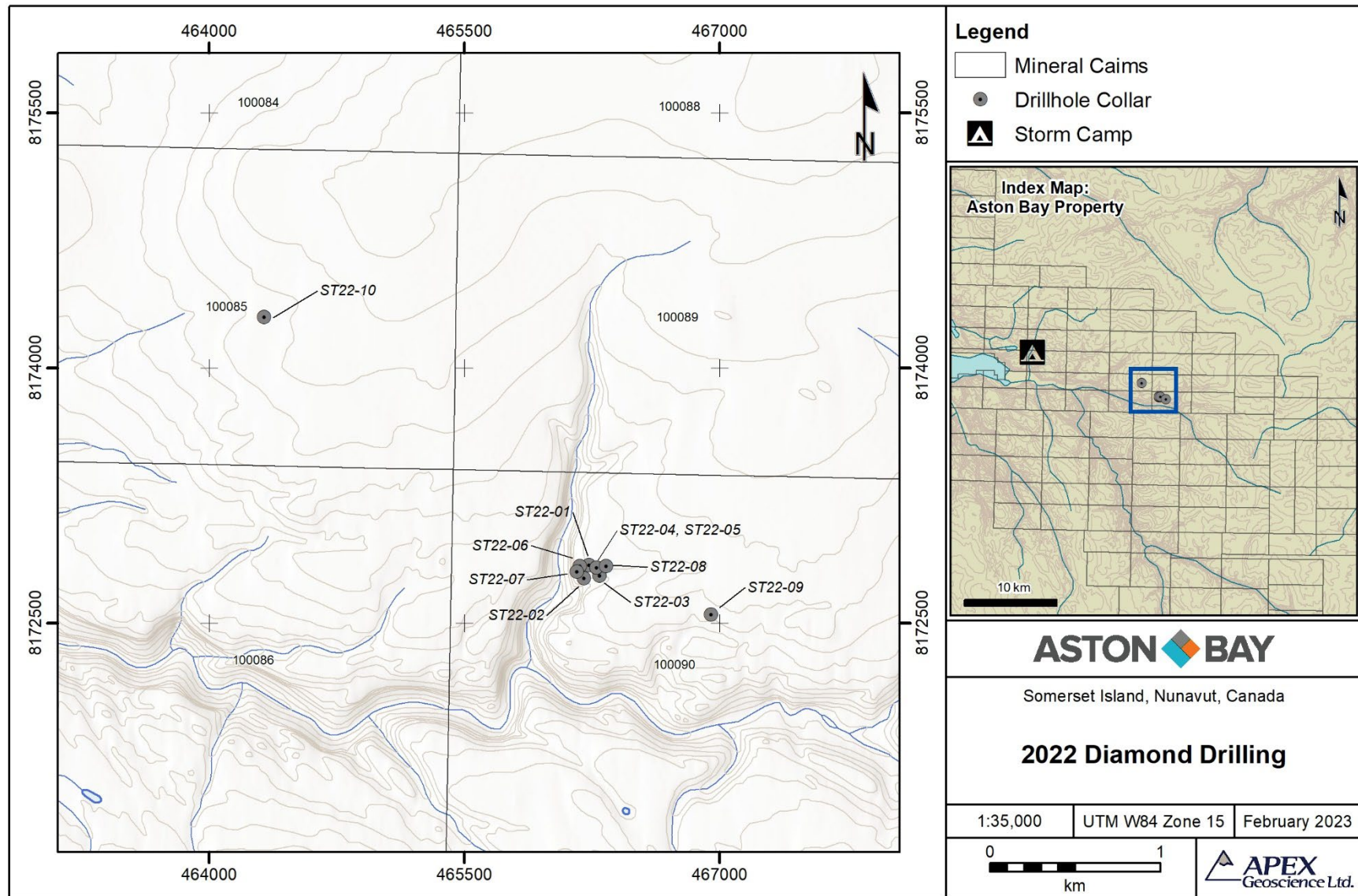
Table 1 2022 Drill Hole Locations

Drill Hole	Zone	Latitude	Longitude
ST22-01	2750N	73.6459	-94.0745
ST22-02	2750N	73.6452	-94.0754
ST22-03	2750N	73.6454	-94.0725
ST22-04	2750N	73.6458	-94.0731
ST22-05	2750N	73.6458	-94.0731
ST22-06	2750N	73.6459	-94.0762
ST22-07	2750N	73.6456	-94.0767
ST22-08	2750N	73.6459	-94.0713
ST22-09	Shallow TEM	73.6434	-94.0515
ST22-10	Deep TEM	73.6587	-94.1361

5 Personnel

Personnel associated with the 2022 exploration program are listed in Appendix 2.

Figure 3 2022 Drill Hole Locations



6 Land Use

6.1 Camp & Waste

The Storm Camp is located along the Aston River at approximately 73°39'23" N latitude and 94°27'07" W longitude. The camp site is located on an elevated gravel bar in the river valley. It includes an airstrip suitable for landing a Twin Otter. A staging area was established at the east end of the airstrip, approximately 600 metres west of Storm Camp.

Storm Camp was constructed during the 2016 and 2018 seasons and was used to support exploration during subsequent years. The camp comprises 22 structures including 16 insulated Weatherport tents built upon wooden floors and 6 plywood structures. No additional buildings were constructed, and no additional equipment was left on site during 2022. All tents and plywood buildings remain in place for future use.

Upon seasonal closure, electronics and communications gear were removed from site. Most other camp equipment was stored on site inside of the tents or plywood buildings. All remaining lumber was stacked at the east end of camp for future use. Tables 2 and 3 list the structures and major equipment left on site at the close of the season on August 25, 2022. Camp photos are included in Appendix 3.

Table 2 Storm Camp Remaining Structures August 25, 2022

Quantity	Item
1	16'x32' plywood kitchen building.
1	14'x32' plywood floor for core shack.
1	12'x20' plywood latrine shack. Includes 5 pacto toilets.
1	10'x16' plywood storage shack.
1	10'x12' plywood generator shack. Includes exhaust piping, etc.
1	12'x12' plywood core cutting shack.
11	14'x16' insulated Weatherport tents on plywood floor to serve as sleeper tents. Includes plywood beds, tables, chairs etc.
3	14'x16' insulated Weatherport tents on plywood floors to serve as dries. Includes shower stalls, sink, plumbing, etc.
2	14'x16' insulated Weatherport tents on plywood floors to serve as office and first aid tent. Includes tables, chairs, etc.

Table 2 Storm Camp Remaining Equipment August 25, 2022

Quantity	Item
2	Water tanks (350gal & 250gal)
2	Hot water tanks
2	Water supply pumps with fish screen and hose line
2	Water pressure pumps
1	14 kVA diesel generator with 5 kW gas backups (x2)
1	Electrified bear fence (taken down at end of season)
1	Dual chamber-controlled air incinerator
4	Refrigerators
3	Chest freezers
2	Cooking stoves
1	Dishwasher
3	Washing machines
3	Dryers
17	Toyotomi heating stoves
4	Oil drip stoves
5	Pacto toilets
3	Containment berms for fuel cache & drill equipment
20	Mini berms for tent drums and fuel transfer
	Heavy electrical cables and panel boxes
	Various lumber (stacked by generator shack)
	Various office, camp and medical supplies

Camp water was drawn from the Aston River for cooking and cleaning. Drinking water was purchased and flown in from Yellowknife/Resolute in 5 gallon jugs. A total of 61.32 m³ of water was drawn from the Aston River for camp use between July 15 and August 23, 2022, averaging 1.53 m³ per day. During this time running water, laundry and showers were available in camp. Water was drawn from the river using a 5.5 HP gas powered pump or an electric trash pump. The pump intake hose was equipped with a mesh screen to ensure fish were not entrained. When in use, during fueling or in transit, the pump was placed in a plastic spill tray. When not in use, the pump was stored in camp within secondary containment. No fuel was stored at the pump site and all fueling was completed in camp. Water volumes were measured using markings on the water storage tanks at 50 gallon increments. The volumes were recorded in a daily log by the camp foreman (Appendix 4).

6.2 Fuel Storage

During the 2022 program, the existing fuel cache was used, located at the east end of Storm Camp at approximately 73° 39' 23" N latitude and 94° 26' 58" W longitude. A small amount of diesel and gas drums were stored at the Storm Camp fuel cache during the offseason (Table 4). All remaining fuel drums were stored in covered containment berms. Remaining propane cylinders were secured to one of the plywood buildings.

Table 4 Storm Camp Fuel Cache Inventory August 23, 2022

Material	Container	Quantity on Site
Diesel	205 L Drum	9 Drums
Gasoline	205 L Drum	19 Drums
Propane	100 lb Cylinder	8 Cylinders

During the 2022 program, a fuel cache was established adjacent to the camp airstrip at 73° 39' 24" N latitude, 94° 28' 20" W longitude to store fuel in the offseason. A notice of fuel cache establishment was also to Joseph Monteith, Resource Management Officer for CIRNAC, on August 16, 2022. All remaining diesel, gas, and jet fuel drums were stored at the Storm Airstrip fuel cache during the offseason (Table 5). All remaining fuel drums were stored in covered containment berms.

Table 5 Storm Airstrip Fuel Inventory August 23, 2022

Material	Container	Quantity on Site
Diesel	205 L Drum	97 Drums
Jet Fuel (Jet A)	205 L Drum	45 Drums
Gasoline	205 L Drum	5 Drums

All fuel caches are located a minimum of 31 metres from the normal high-water mark of any water bodies. No damaged or leaking drums were identified during inspection prior to the end of the 2022 season. A total of 39 empty drums and 2 empty propane cylinders remain on site.

6.3 Flights

All field work completed during 2022 was helicopter supported, using Storm Camp as a base. A Bell 407 helicopter and a AS350 A2 helicopter were contracted from Custom Helicopters Ltd. for the duration of the program. Personnel and gear were transported to and from the field daily using the Bell 407 . Pilots were instructed, when possible, to avoid landing in areas with soft

ground to avoid rutting. Helicopter pads at the camp were situated on firm, level ground a safe distance from work sites.

A fixed wing Twin Otter aircraft based in Resolute Bay, NU was chartered from Kenn Borek Air Ltd. as needed. The Twin Otter was used to move personnel, fuel and supplies between Resolute Bay and the Storm Camp airstrip.

6.4 Drilling

One Multi Power Products Discovery II drill and one Zinex A-5 drill, including most of the ancillary equipment and consumables, remain on site for future drill programs. All equipment was drained of fuel and oil for off-season storage. Tables 5 and 6 list the drilling equipment and consumables left on site at the close of the season on August 25, 2022.

Table 5 Remaining Drill Equipment August 25, 2022

Quantity	Item
1	Zinex A-5 diamond drill with engine, feed frame, control panel, drill head, foot clamp, wireline and drill shack
1	MPP Discovery II diamond drill with engine, feed frame, control panel, drill head, foot clamp, wireline and drill shack
1	Spare engine
1	Spare rotation motor
1	Spare drill head
2	Spare feed cylinders
2	Spare foot clamps
2	Spare winch and pump drive motors
1	Spare main hydraulic pump
1	Spare wireline winch (2 spare rolls of wireline)
6	5 kW gas generators
2	Welders
5	Supply pumps (1 spare transmission)
4	Trash pumps
3	Spare down hole pumps
2	Mud separators
6	Mud tanks
8	Coil stoves
3	Diesel heaters
6	Fuel tanks
2	Fly baskets
266	3m NQ drill rods
90	1.5m casing

Quantity	Item
16	Outer tubes
18	Inner tubes
75	200 psi water line
75	400 psi water line
4	Spill kits
2	Survival shacks
	Various fittings & tooling

Table 6 Remaining Drill Consumables August 25, 2022

Quantity	Item
141	Various drill muds (5 gal pails)
10	Motor oil (5 gal pails)
10	Hydraulic oil (5 gal pails)
5	Gear Oil
382	Calcium Chloride (50lb bags), stored inside a tent

6.5 Archaeological Sites

No new or known archaeological sites were encountered during the 2022 exploration program.

6.6 Inuit Owned Land

Aston Bay Prospecting Permit P-26 and portions of P-30 lie within Inuit Owned Land (IOL) parcel RB-02. The prospecting permits have since lapsed and no new claims were staked within them. No work was completed on IOL during the 2022 Aston Bay Property exploration program.

7 Wildlife and Environment

As a general rule, any interaction with wildlife was discouraged; however, all personnel were instructed on the appropriate action to take when encountering wildlife in the field. Whenever possible, the helicopter pilot was instructed to maintain a minimum altitude of 610 metres above ground level and, when necessary, alter course to avoid disturbing any wildlife spotted during flight. Prior to, and after dropping off field crews, the pilot conducted high altitude (>610 m) reconnaissance in order to identify and locate any wildlife in the area.

A number of preventative measures were employed to avoid wildlife interaction in camp. Storm Camp was equipped with an electrified “bear fence” as a wildlife deterrent and each tent was equipped with an air horn and bear spray. The site supervisors and camp foreman had access to firearms in case of emergency. All food wastes were stored in appropriate bear proof containers and incinerated daily to remove attractants. Personnel were instructed to avoid bringing food

into sleeper tents and to remove waste regularly. The bear fence wire was taken down at the end of the 2022 season to avoid wildlife entanglements.

No wildlife sightings were recorded during the 2022 exploration program near the camp or drilling sites. No environmental studies were conducted in 2022.

8 Reclamation Work

Progressive reclamation included keeping work areas clean and removing wastes from work sites daily. All wastes were stored in appropriate containers for later incineration or removal. The camp was inspected by the site supervisors for cleanliness and any sign of contamination prior to the close of the field program. All sites were deemed acceptable.

9 Waste Disposal

All combustible wastes were incinerated on site using a batch feed dual-chamber controlled air incinerator or removed from site for disposal if incineration was not practicable. Any residual waste (ash) was sealed in 5-gallon metal pails.

Grey water from the kitchen and each dry was piped to excavated sumps behind the buildings and over 100 m from the nearest water body. A grease trap was used for the kitchen sump. The trap was emptied as needed and the contents were sealed in 5 gallon pails for proper disposal. The grease trap was removed from site at the end of the 2022 program. No leaks or overflows were observed in any of the sumps.

Pacto toilets were used to collect sewage. All pacto bags were removed from the camp in sealed 5-gallon plastic pails for disposal.

10 Inspections

Aston Bay is not aware of any inspections completed during 2022.

11 2023 Work Plan

The 2023 Aston Bay Property exploration program is anticipated to include a reverse circulation (RC) drilling program of up to 7,500 metres utilizing one drill, a diamond drilling program of 2,500 metres, utilizing one drill, and ground geophysical surveys comprising electromagnetic (EM) and gravity surveys. The program will focus on the Storm graben area. The average hole depth is expected to be approximately 150m, up to a maximum anticipated length of 700m. The 2023 exploration program is projected to start as early as April and continue until as late as September. Similar programs are anticipated for three to four subsequent years.

All exploration activities will be helicopter supported and based out of Storm Camp, located along the Aston River at approximately 73°39'23" N latitude and 94°27'07" W longitude. The camp site is located on an elevated gravel bar in the Aston River valley. It includes an airstrip suitable for landing a Twin Otter. Camp infrastructure includes 6 plywood buildings and 16 Weatherport tents, built upon wooden platforms.

Approximately 40,000 L (~200 drums) of fuel will be stored at the current fuel cache locations, adjacent to camp and the airstrip. The caches will be primarily diesel and jet fuel, with small quantities of gasoline and propane. All fuel will be stored within secondary containment. All fuel caches will be located a minimum distance of 31 metres from the normal high-water mark of any water body.

With proper design and execution, environmental impacts of the proposed exploration program are expected to be minimal. Plans are continuously being updated for storage and handling of fuel, waste management, reclamation, and wildlife management, all with the goal of ensuring minimal impact on the environment.

Appendix 1 2022 Aston Bay Property Mineral Claims and Prospecting Permits

Mineral Claims		
Tenure Number	Area (ha)	Owner Name
100054	945.1	Aston Bay Holdings Inc. (100%)
100055	582.3	Aston Bay Holdings Inc. (100%)
100056	346.2	Aston Bay Holdings Inc. (100%)
100057	1090.5	Aston Bay Holdings Inc. (100%)
100058	1091.9	Aston Bay Holdings Inc. (100%)
100059	1093.3	Aston Bay Holdings Inc. (100%)
100060	218.8	Aston Bay Holdings Inc. (100%)
100061	529.7	Aston Bay Holdings Inc. (100%)
100062	1133.7	Aston Bay Holdings Inc. (100%)
100063	1090.5	Aston Bay Holdings Inc. (100%)
100064	1091.9	Aston Bay Holdings Inc. (100%)
100065	1093.3	Aston Bay Holdings Inc. (100%)
100066	747.9	Aston Bay Holdings Inc. (100%)
100067	785.4	Aston Bay Holdings Inc. (100%)
100068	1097.1	Aston Bay Holdings Inc. (100%)
100069	999.7	Aston Bay Holdings Inc. (100%)
100070	1000.9	Aston Bay Holdings Inc. (100%)
100071	1002.2	Aston Bay Holdings Inc. (100%)
100072	1003.4	Aston Bay Holdings Inc. (100%)
100073	803.6	Aston Bay Holdings Inc. (100%)
100074	1005.6	Aston Bay Holdings Inc. (100%)
100075	1090.5	Aston Bay Holdings Inc. (100%)
100076	1091.9	Aston Bay Holdings Inc. (100%)
100077	1093.3	Aston Bay Holdings Inc. (100%)
100078	1094.6	Aston Bay Holdings Inc. (100%)
100079	876.7	Aston Bay Holdings Inc. (100%)
100080	1097.1	Aston Bay Holdings Inc. (100%)
100081	1090.5	Aston Bay Holdings Inc. (100%)
100082	1091.9	Aston Bay Holdings Inc. (100%)
100083	1093.3	Aston Bay Holdings Inc. (100%)
100084	1094.6	Aston Bay Holdings Inc. (100%)
100085	876.7	Aston Bay Holdings Inc. (100%)
100086	1097.1	Aston Bay Holdings Inc. (100%)
100087	1002.2	Aston Bay Holdings Inc. (100%)
100088	1003.4	Aston Bay Holdings Inc. (100%)
100089	803.6	Aston Bay Holdings Inc. (100%)
100090	1005.6	Aston Bay Holdings Inc. (100%)
100091	1093.3	Aston Bay Holdings Inc. (100%)
100092	1094.6	Aston Bay Holdings Inc. (100%)
100093	876.7	Aston Bay Holdings Inc. (100%)
100094	1097.1	Aston Bay Holdings Inc. (100%)
100095	1094.6	Aston Bay Holdings Inc. (100%)
100096	1004.6	Aston Bay Holdings Inc. (100%)
100097	804.6	Aston Bay Holdings Inc. (100%)

N2021C0004 - 2021 CIRNAC Land Use Annual Report for the Aston Bay Property

Mineral Claims		
Tenure Number	Area (ha)	Owner Name
100098	1096.0	Aston Bay Holdings Inc. (100%)
100099	1097.3	Aston Bay Holdings Inc. (100%)
100100	1091.9	Aston Bay Holdings Inc. (100%)
100588	1412.8	Aston Bay Holdings Inc. (100%)
100589	1325.4	Aston Bay Holdings Inc. (100%)
100595	1428.1	Aston Bay Holdings Inc. (100%)
100604	1428.1	Aston Bay Holdings Inc. (100%)
100624	1103.1	Aston Bay Holdings Inc. (100%)
100674	1416.6	Aston Bay Holdings Inc. (100%)
100708	1193.5	Aston Bay Holdings Inc. (100%)
100709	1101.7	Aston Bay Holdings Inc. (100%)
100723	1430.2	Aston Bay Holdings Inc. (100%)
100724	1320.2	Aston Bay Holdings Inc. (100%)
100828	1180.0	Aston Bay Holdings Inc. (100%)
100829	1179.9	Aston Bay Holdings Inc. (100%)
100830	1179.9	Aston Bay Holdings Inc. (100%)
100831	1414.0	Aston Bay Holdings Inc. (100%)
100956	1305.2	Aston Bay Holdings Inc. (100%)
100957	1176.7	Aston Bay Holdings Inc. (100%)
100958	1305.6	Aston Bay Holdings Inc. (100%)
101027	904.2	Aston Bay Holdings Inc. (100%)
101028	433.3	Aston Bay Holdings Inc. (100%)
101029	1514.8	Aston Bay Holdings Inc. (100%)
101030	650.2	Aston Bay Holdings Inc. (100%)
101031	721.4	Aston Bay Holdings Inc. (100%)
101032	1314.7	Aston Bay Holdings Inc. (100%)
101033	1169.1	Aston Bay Holdings Inc. (100%)
101034	1400.9	Aston Bay Holdings Inc. (100%)
101035	341.5	Aston Bay Holdings Inc. (100%)
101036	1176.7	Aston Bay Holdings Inc. (100%)
101037	1175.2	Aston Bay Holdings Inc. (100%)
101038	1408.3	Aston Bay Holdings Inc. (100%)
101039	1175.2	Aston Bay Holdings Inc. (100%)
101040	1300.0	Aston Bay Holdings Inc. (100%)
101041	1428.1	Aston Bay Holdings Inc. (100%)
101042	1191.7	Aston Bay Holdings Inc. (100%)
101043	1432.0	Aston Bay Holdings Inc. (100%)
101044	1195.0	Aston Bay Holdings Inc. (100%)
101045	1435.9	Aston Bay Holdings Inc. (100%)
101046	1318.3	Aston Bay Holdings Inc. (100%)
101047	1100.1	Aston Bay Holdings Inc. (100%)
101048	1321.8	Aston Bay Holdings Inc. (100%)
101049	1103.1	Aston Bay Holdings Inc. (100%)
101050	1325.4	Aston Bay Holdings Inc. (100%)
101051	1195.0	Aston Bay Holdings Inc. (100%)
101052	1435.9	Aston Bay Holdings Inc. (100%)

N2021C0004 - 2021 CIRNAC Land Use Annual Report for the Aston Bay Property

Mineral Claims		
Tenure Number	Area (ha)	Owner Name
101053	1198.2	Aston Bay Holdings Inc. (100%)
101054	1198.2	Aston Bay Holdings Inc. (100%)
101055	1214.2	Aston Bay Holdings Inc. (100%)
101056	1211.0	Aston Bay Holdings Inc. (100%)
101057	1098.7	Aston Bay Holdings Inc. (100%)
101058	1188.8	Aston Bay Holdings Inc. (100%)
101059	1190.2	Aston Bay Holdings Inc. (100%)
101060	1428.1	Aston Bay Holdings Inc. (100%)
101061	1430.2	Aston Bay Holdings Inc. (100%)
101062	1193.5	Aston Bay Holdings Inc. (100%)
101063	1195.0	Aston Bay Holdings Inc. (100%)
101064	1435.9	Aston Bay Holdings Inc. (100%)
101065	1430.2	Aston Bay Holdings Inc. (100%)
101066	1193.5	Aston Bay Holdings Inc. (100%)
101067	1194.9	Aston Bay Holdings Inc. (100%)
101068	1435.9	Aston Bay Holdings Inc. (100%)
101069	1198.2	Aston Bay Holdings Inc. (100%)
101070	1428.1	Aston Bay Holdings Inc. (100%)
101071	1191.7	Aston Bay Holdings Inc. (100%)
101072	1432.0	Aston Bay Holdings Inc. (100%)
101073	1428.1	Aston Bay Holdings Inc. (100%)
101100	1191.7	Aston Bay Holdings Inc. (100%)
101101	1432.0	Aston Bay Holdings Inc. (100%)
101102	1195.0	Aston Bay Holdings Inc. (100%)
101103	1435.9	Aston Bay Holdings Inc. (100%)
101104	1198.2	Aston Bay Holdings Inc. (100%)
101105	1198.2	Aston Bay Holdings Inc. (100%)
102593	1716.9	Apex Geoscience Ltd. (100%)
102594	1714.0	Apex Geoscience Ltd. (100%)
102595	1711.1	Apex Geoscience Ltd. (100%)
102596	1699.7	Apex Geoscience Ltd. (100%)
102597	1212.3	Apex Geoscience Ltd. (100%)
102598	1228.5	Apex Geoscience Ltd. (100%)
102599	1694.7	Apex Geoscience Ltd. (100%)
102600	967.1	Apex Geoscience Ltd. (100%)
102601	1451.6	Apex Geoscience Ltd. (100%)
102602	966.2	Apex Geoscience Ltd. (100%)
102603	1447.5	Apex Geoscience Ltd. (100%)
102604	1686.1	Apex Geoscience Ltd. (100%)
102605	1683.2	Apex Geoscience Ltd. (100%)
102606	1680.3	Apex Geoscience Ltd. (100%)
102607	1702.5	Apex Geoscience Ltd. (100%)
102608	1705.4	Apex Geoscience Ltd. (100%)
102609	1708.3	Apex Geoscience Ltd. (100%)

N2021C0004 - 2021 CIRNAC Land Use Annual Report for the Aston Bay Property

Mineral Claims		
Tenure Number	Area (ha)	Owner Name
102619	1224.7	Apex Geoscience Ltd. (100%)
102620	1502.6	Apex Geoscience Ltd. (100%)
102621	1666.6	Apex Geoscience Ltd. (100%)
102622	1664.1	Apex Geoscience Ltd. (100%)
102623	1661.7	Apex Geoscience Ltd. (100%)
102624	1119.0	Apex Geoscience Ltd. (100%)
102625	1568.9	Apex Geoscience Ltd. (100%)
102626	1571.6	Apex Geoscience Ltd. (100%)
102627	1574.2	Apex Geoscience Ltd. (100%)
102628	1576.9	Apex Geoscience Ltd. (100%)
102629	1579.5	Apex Geoscience Ltd. (100%)
102630	677.7	Apex Geoscience Ltd. (100%)
102631	1244.6	Apex Geoscience Ltd. (100%)
102632	907.7	Apex Geoscience Ltd. (100%)
102633	796.6	Apex Geoscience Ltd. (100%)
102890	1364.3	Aston Bay Holdings Inc. (100%)
102891	1809.6	Aston Bay Holdings Inc. (100%)
102892	1812.7	Aston Bay Holdings Inc. (100%)
102893	1815.8	Aston Bay Holdings Inc. (100%)
102894	1633.2	Aston Bay Holdings Inc. (100%)
102895	966.2	Aston Bay Holdings Inc. (100%)
102896	1581.1	Aston Bay Holdings Inc. (100%)
102897	1788.1	Aston Bay Holdings Inc. (100%)
102898	1492.0	Aston Bay Holdings Inc. (100%)
102899	1830.4	Aston Bay Holdings Inc. (100%)
102900	1833.5	Aston Bay Holdings Inc. (100%)
102901	1836.6	Aston Bay Holdings Inc. (100%)
102902	1839.7	Aston Bay Holdings Inc. (100%)
102903	1842.8	Aston Bay Holdings Inc. (100%)
102904	1845.9	Aston Bay Holdings Inc. (100%)
102905	1848.9	Aston Bay Holdings Inc. (100%)
102906	1624.7	Aston Bay Holdings Inc. (100%)
102907	1772.4	Aston Bay Holdings Inc. (100%)
102908	1812.7	Aston Bay Holdings Inc. (100%)
102909	1167.3	Aston Bay Holdings Inc. (100%)
102910	1671.0	Aston Bay Holdings Inc. (100%)
102911	1832.0	Aston Bay Holdings Inc. (100%)
102912	1838.1	Aston Bay Holdings Inc. (100%)
102913	1844.3	Aston Bay Holdings Inc. (100%)
Claims Total:	219,256.7 ha	

Appendix 2 2022 Field Personnel

Company	Position	Name	Dates Involved*
Aston Bay Holdings	CEO / Project Manager	Tom Ullrich	August 6 – August 13
APEX Geoscience	Senior Geologist / Project Manager	Chris Livingstone	July 13 – July 24
APEX Geoscience	Project Supervisor	Volod Zhuk	July 13 - August 25
APEX Geoscience	Geologist	Jordan Mathieu	July 15 – August 26
APEX Geoscience	Geologist	Chaneil Wallace	July 15 – August 25
Aziz	Drill Helper/Bear Guard	Oolat	July 27 – August 20
Aziz	Drill Helper/Bear Guard	Samson	July 27 – August 1
Aziz	Camp Attendant	Emily Amarualik	July 27 – July 31, August 4 – August 20
Aziz	Drill Helper/Bear Guard	Ricky	August 1 – August 23
Aziz	Camp Attendant	Brandy	July 31 – August 2
Discovery	Camp Foreman	Stephen McLachlan	July 7 – August 25
Discovery	Camp Labour	Daniel McLachlan	July 7 – July 17
Discovery	Camp Labour	Joe Dietrich	July 9 – July 16
Rugged Edge	Cook/Medic	Toby Gilbert	July 13 – August 22
Top Rank	Foreman	Devon Rank	July 15 – July 24
Top Rank	Foreman	Dale Vandepoele	July 15 – August 24
Top Rank	Driller (Day)	Chad Brown	July 15 – August 24
Top Rank	Driller (Night)	Myron Cook	July 15 – August 24
Top Rank	Helper (Day)	Julian Goodine	July 15 – August 24
Top Rank	Helper (Night)	Laurent Ames	July 15 – August 24
Top Rank	3rd Man (Day)	Jonah Goodine	July 15 – August 24
Top Rank	3rd Man (Night)	Chuck Taylor	July 15 – August 24
Custom	Helicopter Pilot	Nick Canton	July 14 – July 20
Custom	AME	Keith Bauld	July 14 – July 20
Custom	Helicopter Pilot	Stephen Lodge/Look	July 20 – August 22/August 20 – August 21
Custom	AME	Jonathon Kirby	July 20 – August 22
Kenn Borek	Pilot	Jake Kaye	July 29 – August 13
Kenn Borek	First Officer	Bryce Khun	July 29 – August 13
CasCom	Satellite/Radio Install	Gutti Gudmundsson	July 14 – July 16

*Includes travel days

Appendix 3 2022 Aston Bay Property Photos

Photo 1. Storm Camp August 2022 (looking east).



Photo 2. Storm Camp August 2022 (looking west).



Photo 3. Storm Camp diesel/gas fuel cache (looking east).



Photo 4. Berm for fuel cache site at Storm Camp airstrip (looking east).

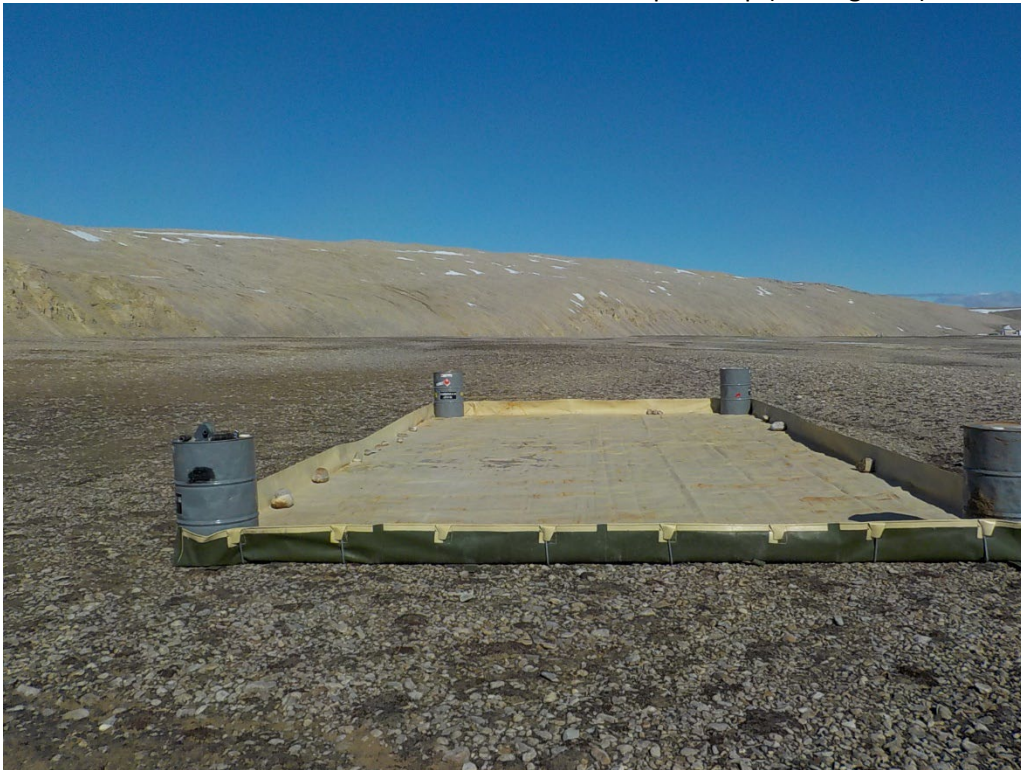


Photo 5. Storm Camp airstrip fuel cache (looking south west).



Photo 6. Storm Camp drilling supplies (looking south west).



Appendix 4 2022 Storm Camp Water Usage

Date	Tank 1 (250 gal)	Tank 2 (350 gal)	Tank 1 (250 gal)	Tank 2 (350 gal)	Total Use (m ³)	Checked By
	Volume (gal)	Volume (gal)	Volume (m ³)	Volume (m ³)		
14-Jul-22	-	-	-	-	-	-
15-Jul-22	150	200	0.57	0.76	1.32	SM
16-Jul-22	50	150	0.19	0.57	0.76	SM
17-Jul-22	125	125	0.47	0.47	0.95	SM
18-Jul-22	175	200	0.66	0.76	1.42	SM
19-Jul-22	50	200	0.19	0.76	0.95	SM
20-Jul-22	150	150	0.57	0.57	1.14	SM
21-Jul-22	150	200	0.57	0.76	1.32	SM
22-Jul-22	50	250	0.19	0.95	1.14	SM
23-Jul-22	150	200	0.57	0.76	1.32	SM
24-Jul-22	200	200	0.76	0.76	1.51	SM
25-Jul-22	200	200	0.76	0.76	1.51	SM
26-Jul-22	150	200	0.57	0.76	1.32	SM
27-Jul-22	150	200	0.57	0.76	1.32	SM
28-Jul-22	200	200	0.76	0.76	1.51	SM
29-Jul-22	150	200	0.57	0.76	1.32	SM
30-Jul-22	200	150	0.76	0.57	1.32	SM
31-Jul-22	200	200	0.76	0.76	1.51	SM
01-Aug-22	200	250	0.76	0.95	1.70	SM
02-Aug-22	200	250	0.76	0.95	1.70	SM
03-Aug-22	100	100	0.38	0.38	0.76	SM
04-Aug-22	150	200	0.57	0.76	1.32	SM
05-Aug-22	200	250	0.76	0.95	1.70	SM
06-Aug-22	200	200	0.76	0.76	1.51	SM
07-Aug-22	200	200	0.76	0.76	1.51	SM
08-Aug-22	200	250	0.76	0.95	1.70	SM
09-Aug-22	200	400	0.76	1.51	2.27	SM
10-Aug-22	200	250	0.76	0.95	1.70	SM
11-Aug-22	150	200	0.57	0.76	1.32	SM
12-Aug-22	200	250	0.76	0.95	1.70	SM
13-Aug-22	150	200	0.57	0.76	1.32	SM
14-Aug-22	200	200	0.76	0.76	1.51	SM
15-Aug-22	200	300	0.76	1.14	1.89	SM
16-Aug-22	300	400	1.14	1.51	2.65	SM
17-Aug-22	150	250	0.57	0.95	1.51	SM
18-Aug-22	200	300	0.76	1.14	1.89	SM
19-Aug-22	400	550	1.51	2.08	3.60	SM
20-Aug-22	250	250	0.95	0.95	1.89	SM
21-Aug-22	150	175	0.57	0.66	1.23	SM
22-Aug-22	200	350	0.76	1.32	2.08	SM
23-Aug-22	100	200	0.38	0.76	1.14	SM
24-Aug-22	-	-	-	-	-	-
TOTAL:	7,000	9,200	26.50	34.83	61.32	
Daily Average:	175	230	0.66	0.87	1.53	
Total Used:	16,200 gal / 61.32 m³					