



**INDUSTRIAL HYGIENE MONITORING
REPORT – Accommodation facilities**

S2 2025

Baffinland Iron Mines corp.

**Mary River Mine and Milne Port inlet
(Nunavut)**

December 2025

File # : HDS-9128-3



**Hudon Desbiens St-Germain
Environnement inc.**

640, rue Saint-Paul Ouest, Bureau 100
Montréal (Québec) H3C 1L9
Tél.: (514) 398-0553 Fax: (514) 398-0554
info@hdsenv.com www.hdsenv.com

TABLE OF CONTENT		Page
1	INTRODUCTION	1
	1.1 Mandate and Objectives	1
	1.2 Scope and Approach	1
	1.3 Study Limitations.....	1
2	SITES DESCRIPTIONS & OPERATING CONDITIONS.....	2
	2.1 Sites descriptions.....	2
	2.2 Conditions during surveys.....	2
3	GUIDELINE VALUES.....	3
	3.1 Indoor noise	3
	3.2 Whole-body vibration	3
4	METHODOLOGY	5
	4.1 Sampling strategy	5
	4.2 Indoor noise	5
	4.3 Whole-body vibration	5
5	RESULTS.....	7
	5.1 Indoor noise	7
	5.2 Whole-body vibration	9
6	CONCLUSIONS AND RECOMMENDATIONS.....	11
	6.1 Noise	11
	6.2 Whole-body vibration	11
	REFERENCES.....	12

TABLES	Page
Table 1. Sampling strategy.....	6
Table 2. Results – Indoor noise levels in accommodation facilities.....	8
Table 3. Results – Whole-body vibration levels in accommodation facilities	10

APPENDICES

- Appendix A – Study Limitations
- Appendix B – Calibration certificates
- Appendix C – Session reports, indoor noise levels
- Appendix D – Session reports, whole-body vibration levels

PREPARED FOR

BAFFINLAND IRON MINES CORPORATION

360 Oakville Place Drive, Suite 300
Oakville, Ontario, Canada, L6H 6K8

Sean Lee
Health, Safety & Security Superintendent

Blaine Taylor
Health, Safety & Security Superintendent

Wayne LeDrew
Sr. Health and Safety Coordinator

Peter Hennebury
Health and Safety Coordinator

PREPARED BY

HUDON DESBIENS ST-GERMAIN ENVIRONNEMENT INC.

640, rue Saint-Paul ouest, bureau 100
Montreal (Quebec) H3C 1L9

Jean-Paul Ballot, Eng. & ROH
Registered Occupational Hygienist

jpballet@hdsenv.com



Henintsoa Rakotomalala, Eng.
Occupational Hygiene Professional

hrakotomalala@hdsenv.com

1 INTRODUCTION

1.1 Mandate and Objectives

The services of Hudon Desbiens St-Germain Environnement inc. (HDS Environnement) were selected by Baffinland Iron Mines Corporation (herein referred to as BIM) to survey various physical contaminants in accommodation facilities at the Mary River Mine and the Milne inlet Port, two sites located in the Qikiqtani Region (Baffin Island; Nunavut).

This study was carried out at the request of Wayne LeDrew, Sr. Health & Security Coordinator of BIM as part of the 2025 industrial hygiene monitoring program.

1.2 Scope and Approach

The scope of the study included the following:

- Mary River Mine site (MRM):
 - Sailivik camp (SC): indoor noise and whole-body vibration levels.
- Milne inlet Port site (MP):
 - Port Site complex (PSC) camp and 380-person camp: indoor noise and whole-body vibration levels.

The present report includes, but is not limited to, a brief description of the implemented strategy, sampling methodology, results, conclusions and relevant recommendations.

1.3 Study Limitations

The conclusions and recommendations included in this report are based upon professional opinions expressed within the context of the mandate given to HDS Environment by Baffinland Iron Mines. HDS Environment accepts no responsibility for any use that is made of this report in any other context or by any other party, unless being expressly informed prior to such use and having explicitly agreed to the use of this report by others.

This study only reflects the observations and measurements made during the sampling campaign. HDS Environnement declines all responsibility for any variation in environmental conditions and the potential impacts on the conclusions of this study (detailed study limitation in Appendix A).

2 SITES DESCRIPTIONS & OPERATING CONDITIONS

2.1 Sites descriptions

BIM operates two (2) sites in the Qikiqtani Region: the MRM site and the MP site. The crushed ore produced throughout the year by the mining operations at MRM is transported to MP by a fleet of Off-Highway Trucks (OHTs), where it is stockpiled until the sea lane is opened for a few weeks, at the end of the summer.

This study was conducted at the two (2) sites, in November and December 2025.

2.2 Conditions during surveys

SC and PSC are composed of modular prefabricated structures, while the 380-man camp is made of soft-wall structures. Rooms are standardised across each facility. During the study, all facilities were open to guests.

The indoor noise and whole-body vibration levels measured in accommodation facilities include contributions from various indoor sources (HVAC systems, opening/closing doors, cleaning, etc.) as well as outdoor sources (frost fighters, idling vehicles, machinery operations, etc.).

The various surveys in accommodations and offices were overall considered representative of regular operating, ventilation and occupancy conditions (please refer to section 5, *Results* for details).

3 GUIDELINE VALUES

3.1 Indoor noise

Based on information collected during the mandate, the Nunavut Impact Review Board (NIRB) established a 75-dBA threshold for the average noise exposure of workers during rest periods. This limit is based on the 85-dBA exposure threshold established by the Mine Health and Safety Act R-125-95 for an 8-hr work shift (Part IX and Schedule 5).

Additional research allowed to pinpoint the World Health Organization (WHO) *Guidelines for Community Noise*¹ which recommends an 8-hr L_{Aeq}^2 of 30 dBA during night-time, inside a bedroom (continuous noises). This guideline is designed to minimize sleep disturbance for “sensitive groups [...] including shift workers [...] and other individuals who have difficulty sleeping”.

Thus, to take into account the requirements of NIRB as well as the ALARA (As Low As Reasonably Achievable) safety principle, we will therefore consider in this study an 8-hr L_{Aeq} comfort threshold of 30 dBA and an 8-hr L_{Aeq} exposure limit (EL) of 75 dBA to assess workers’ exposure to indoor noise levels during rest periods.

3.2 Whole-body vibration

Based on information collected during the mandate, due to the absence of a vibration exposure threshold in the *Mine Health and Safety Act R-125-95*, the NIRB refers to the daily exposure limits defined by the European Physical Agents Vibration Directive 2002/44/EC.

For workers exposed to whole-body vibration, this directive defines an action limit (AL) of 0.5 m/s² and an EL of 1.15 m/s², both standardized to an 8-hr reference period.

Additional research allowed to pinpoint a 5-part standard from the International Organization for Standardization (ISO) on human exposure to mechanical vibrations. In appendix C of part 1 of the standard³, it is stated that “fifty percent of alert, fit persons can just detect a weighted vibration with a peak magnitude of 0.015 m/s² [...] with a range of response [that] may extend from about 0.01 m/s² to 0.02 m/s² peak”.

¹ *Guidelines for community noise*, World Health Organization, Geneva, Switzerland (1999).

² 8h- L_{Aeq} is the energy average equivalent level of A-weighted sound over eight (8) hours.

³ ISO 2631-1:1997 *Mechanical vibration and shock — Evaluation of human exposure to whole-body vibration – Part 1: General requirements*

In part 2⁴ of the same standard, it is also stated that “*experience showed in numerous countries that residents expressed complaints linked to vibrations in residential buildings when the magnitude of vibrations are slightly above the perception threshold defined in part 1, appendix C*”.⁵

Thus, to take into account the requirements of NIRB as well as the ALARA safety principle, we will therefore consider in this study a comfort threshold of 0.015 m/s² (peak exposure), an 8-hr AL of 0.5 m/s² and an 8-hr EL of 1.15 m/s² to assess workers’ exposure to whole-body vibration levels during rest periods.

It should be noted that the AL should be considered as a threshold for increased vigilance in order to prevent reaching the EL.

⁴ ISO 2631-2:2003 *Mechanical vibration and shock — Evaluation of human exposure to whole-body vibration — Part 2: Vibration in buildings (1 Hz to 80 Hz)*

⁵ Free translation from the French version of ISO 2631-2:2003

4 METHODOLOGY

4.1 Sampling strategy

The sampling strategy was initially established by BIM representatives prior to the industrial hygiene campaign and adjusted on the field by the HDS representative based on availability of vacant or unoccupied rooms. The final sampling strategy is presented in table 1 below.

4.2 Indoor noise

Indoor noise levels were measured with a class 1 sound level meter (SLM) from Larson Davis, Spartan™ 821 (S/N 001009). The SLM was calibrated prior to sampling using an adapted acoustic calibrator (from Larson Davis, model Cal200) and the calibration drift was checked post-sampling with the same calibrator. These instruments were calibrated to manufacturer's specifications less than one (1) year prior to fieldwork (calibration certificates available in Appendix B).

Sound levels were logged at regular intervals (continuous readings integrated with a Q3 bisection factor, no integration threshold, SLOW response and a 40-110 range).

The SLM were set on a tripod in the center of the room.

Average noise levels (L_{avg}) measured in the present study were considered representative of equivalent average noise levels time-weighted over an 8-hr period ($8h-L_{Aeq}$) and were thus directly compared to the comfort threshold and the 8-hr EL considered in the present study.

4.3 Whole-body vibration

Whole-body vibration levels were measured with a HVM200 from Larson Davis, equipped with a seat pad triaxial accelerometer SEN027. These instruments were calibrated to manufacturer's specifications less than one (1) year prior to fieldwork (calibration certificates available in Appendix B).

The HVM200 was set on "Whole-body Mode" for proper frequency weighting and measurements were logged at 1-min intervals during sampling, unless stated otherwise.

Seat pads were positioned on the floor or on a bedside table, approximately in the center of targeted rooms.

Average accelerations (A_{eq} or A_{rms}) measured during the present study were considered representative of equivalent average accelerations time-weighted on an 8-hr reference period and were thus directly compared to the 8-hr AL and the 8-hr EL considered in the present study.



TABLE 1
SAMPLING STRATEGY - Accommodation facilities
Indoor noise levels and whole-body vibrations - S2 2025
Baffinland Iron Mines - Mary River Mine and Milne Port Sites (Nunavut)

Date	Location	Indoor noise levels	Whole-body vibrations
Mary River Mine			
2025-11-26	Sailiivik Camp Room D2-36	1	1
2025-11-27	Sailiivik Camp Room D2-36	1	1
Milne Port			
2025-11-29	Port site complex Room BA-07 (DS+NS)	1	1
2025-11-30	380-person camp Room G-3	1	1
2025-12-01	Port site complex Room BD-18	1	1

5 RESULTS

5.1 Indoor noise

The indoor noise levels collected in accommodation facilities are compiled in table 2 below. The session reports are presented in Appendix C.

The notable facts are as follow:

- all the indoor noise measurements respect the 75-dBA exposure level considered by the NIRB:
 - MRM: average noise level 36 dBA.
 - MP: average noise levels ranged from 40 to 43 dBA.
- the comfort threshold of 30 dBA considered in this study was exceeded at each sampling station:
 - MRM, Sailiivik Camp, 100% of measurement is above the comfort threshold, exceedances are evenly spread over the sampling period. Highest noise levels were measured before 6 a.m. and after 6 p.m.
 - MP, PSC, ~76% (room BA-07) to ~63% (room BD-18) of the measurement is above the comfort threshold; exceedances are evenly spread over the sampling period. Highest noise levels were measured before 6 a.m. (room BA-07) and after 6 p.m (room BD-18).
 - MP, 380-person camp, 100% of measurement is above the comfort threshold; exceedances and noise levels are evenly spread over the sampling period.

The maximum level of 53 dBA was measured in the 380-person camp on November 30th, 2025 at 11:11 a.m. (Room G-3).



TABLE 2
RESULTS - Accommodation facilities
Indoor noise levels - S2 2025
Baffinland Iron Mines - Mary River and Milne Port Sites (Nunavut)

<i>Starting Date</i>	<i>Location</i>	<i>Instrument</i>	<i>Sampling duration</i>	<i>Leq¹ (dBA)</i>	<i>Remarks</i>
Comfort threshold² (dBA)				30	
Exposure Level³ (dBA)				75	
<i>Mary River Mine</i>					
2025-11-26	Sailiivik Camp - Room D2-26	Spartan 821 S/N 30013	from 4 h 23 to 18 h 55	36,0	Vacant Room (with fridge) Regular conditions
2025-11-27	Sailiivik Camp - Room D2-26	Spartan 821 S/N 30013	from 4 h 41 to 18 h 19	35,9	Vacant Room (with fridge) Regular conditions
<i>Milne Port</i>					
2025-11-29	Port site complex - Room BA-07	Spartan 821 S/N 30013	from 14 h 11 to 4 h 02	43,0	Vacant Room Regular condition Day shift: 42,4 dBA Night shift: 43,3 dBA
2025-11-30	380-person camp - Room G-3	Spartan 821 S/N 30013	from 6 h 48 to 19 h 00	42,2	Vacant Room Regular conditions
2025-12-01	Port site complex - Room BD-18	Spartan 821 S/N 30013	from 4 h 03 to 19 h 31	40,3	Vacant Room Regular conditions

General remarks:

Measurements were taken with a Larson Davis SoundExpert 821 sound level meter (Q3 bisection factor, no integration threshold).
Measurements were taken in vacant rooms.

Notes :

¹ Leq: equivalent noise level averaged over sampling time.

² Comfort threshold defined in the World Health Organization *Guidelines for Community Noise* and designed to minimize sleep disturbances for shift workers.

³ Exposure level considered by the Nunavut Impact Review Board (NIRB) for exposure to noise during resting time.

5.2 Whole-body vibration

The vibration levels measured in accommodation facilities are compiled in table 3 below. The session reports are presented in Appendix D.

The notable facts are as follow:

- all the whole-body vibration measurements respect the limits of 0.5 m/s^2 and 1.15 m/s^2 considered by the NIRB:
 - MRM: average vibration levels $0,002 \text{ m/s}^2$.
 - MP: average vibration levels range from $0,002$ to $0,009 \text{ m/s}^2$.
- the comfort threshold (peak exposure) of $0,015 \text{ m/s}^2$ considered in this study was exceeded at each sampling station:
 - SC: exceedances represent $\sim 2\%$ of the sampling time; $>95\%$ of the exceedances are before 9 a.m. and after 3 p.m.
 - PSC: exceedances represent $\sim 12\%$ (room BA-07) and $\sim 10\%$ (room BD-18) of the sampling time; $\sim 80\%$ of the exceedances are:
 - between 1 p.m. and 9 p.m. a.m. (room BA-07).
 - before 9 a.m. and after 3 p.m. (room BD-18).
 - 380-person camp: exceedances represent $\sim 100\%$ of sampling time.



TABLE 3
RESULTS - Accommodation facilities
Whole-body vibrations - S1 2025
Baffinland Iron Mines - Mary River and Milne Port Sites (Nunavut)

<i>Starting Date</i>	<i>Location</i>	<i>Sampling duration</i>	A_{eq}^1 (m/s^2)	A_{peak}^2 (m/s^2)	<i>Remarks</i>
Comfort threshold (m/s^2) (peak) ³			-	0,015	
8-hr action limit (m/s^2) ⁴			0,5	-	
8-hr exposure level (m/s^2) ⁵			1,15	-	
Mary River Mine					
2025-11-26	Sailiivik Camp - Room D2-26	from 4 h 23 to 18 h 55	0,002	0,035	Vacant Room Regular conditions Comfort threshold exceeded ~2,5% of sampling time
2025-11-27	Sailiivik Camp - Room D2-26	from 4 h 41 to 18 h 19	0,002	0,049	Vacant Room Regular conditions Comfort threshold exceeded ~2,1% of sampling time
Milne Port					
2025-11-29	Port site complex - Room BA-07	from 14 h 11 to 4 h 02	0,003	0,043	Vacant Room Regular conditions Comfort threshold exceeded for ~11,6% of sampling time ~11% of day shift ~13% of night shift
2025-11-30	380-person camp - Room G-3	from 6 h 48 to 19 h 00	0,009	0,27	Vacant Room Regular conditions Comfort threshold exceeded for ~99% of sampling time
2025-12-01	Port site complex - Room BD-18	from 4 h 03 to 19 h 31	0,002	0,074	Vacant Room Regular conditions Comfort threshold exceeded for :~XX% of sampling time

General remarks:

All samples are taken with Larson Davis HVM200 with triaxial accelerometer in seatpad (Whole Body Vibration mode).

Notes :

¹ A_{eq} or A_{rms} : the frequency-weighted, time-weighted acceleration sum over the sampling period.

² A_{peak} : the frequency-weighted, peak acceleration sum measured during the sampling period.

³ Comfort threshold defined by the 5-part standard ISO 2631 1:1997 (peak measurement)

⁴ 8-hr Action limit considered by the Nunavut Impact Review Board (NIRB) for exposure to whole-body vibrations during resting time.

⁵ 8-hr Exposure limit considered by the Nunavut Impact Review Board (NIRB) for exposure to whole-body vibrations during resting time.

6 CONCLUSIONS AND RECOMMENDATIONS

The services of HDS Environnement were retained by BIM to survey noise and vibration levels in accommodation facilities of the Mary River Mine and Milne Inlet sites, located in the Qikiqtani Region (Baffin Island; Nunavut).

The surveys took place in November and December 2025 (see table 1 for sampling strategy). Overall, based on the data collected on site, the survey results were deemed representative of regular operating, ventilation and occupancy conditions expected at this time of year.

Conclusions and recommendations based on the collected data are presented below.

6.1 Noise

All the indoor noise measurements taken in the accommodations respect the exposure limit of 75 dBA considered by the NIRB for exposure to noise during rest.

The comfort threshold of 30 dBA considered in this study was exceeded in all the facilities. Overall, the exceedances are evenly spread during the sampling periods. The highest noise levels occurred during shift changes (3 a.m. to 6 a.m. and 6 p.m. to 9 p.m.).

Based on elements above, HDS Environnement recommends:

- further documenting indoor noise levels in the accommodation facilities, especially during peak activity.
- identifying stationary sources of constant noise above 30 dBA in accommodation facilities.

6.2 Whole-body vibration

All the whole-body vibration measurements taken in the accommodations respect the limits of 0.5 m/s² and 1.15 m/s² considered by the NIRB for exposure to whole-body vibration during rest.

The comfort threshold of 0.015 m/s² considered in this study was exceeded in all the facilities. More than 90% of the exceedances are during shift changes (3 a.m. to 9 a.m. and 3 p.m. to 9 p.m.).

Based on elements above, HDS Environnement recommends:

- further documenting whole-body vibration levels with a HVM200 in the accommodation facilities, especially during peak activity.
- identifying stationary sources of whole-body vibrations above 0.015 m/s² in accommodation facilities.

REFERENCES

- *Mine Health and Safety Act (mine health and safety regulations) R-125-95.*
- *Safety Act (occupational health and safety regulations) R-003-2016;*
- *Canada Occupational Health and Safety Regulations, SOR/86-304*
- *American Conference of Governmental Industrial Hygienists, TLVs and BEIs booklet, 2025 edition.*
- *World Health Organization, Guidelines for community noise, 1999.*
- *ISO 2631 1:1997 Mechanical vibration and shock — Evaluation of human exposure to whole-body vibration – Part 1: General requirements.*
- *ISO 2631-2:2003 Mechanical vibration and shock — Evaluation of human exposure to whole-body vibration — Part 2: Vibration in buildings (1 Hz to 80 Hz).*



APPENDIX A

Study limitations

LIMITATIONS AND DISCLAIMER OF LIABILITY

This report (hereinafter the "Report") was prepared by Hudon Desbiens St-Germain Environnement inc. (hereinafter "HDS Environnement") at the request and for the sole benefit of the client for whom it is directly intended (hereinafter the "Client").

The use of the Report and its content by a third party is subject to the prior written authorization of HDS Environnement. In the event of use of the Report without the authorization of HDS Environnement, this third party undertakes to use it at its own risk and assumes full responsibility. Likewise, it expressly releases HDS Environnement from any liability resulting, directly or indirectly, from the elements, information, conclusions and/or recommendations contained in the Report. HDS Environnement has no obligation towards this third party and may under no circumstances be held liable for losses, fines, penalties, costs, damages and/or prejudices, of any nature whatsoever, suffered by this third party which would result, directly or indirectly, from the use of the Report, including in particular any decision-making process used by this third party on the basis of the information, recommendations and/or conclusions contained in the Report.

Without limiting the generality of the foregoing or certain specific considerations described later in this Report, the scope of the mandate entrusted to HDS Environnement is defined by the service offer emitted on October 17, 2025, and its subsequent modifications, as accepted by the Client (hereinafter the "Mandate").

The purpose of the Report is to provide an overview of the premises specifically covered by the Mandate, on the dates indicated in the Report, according to the scope of the Mandate, and of the findings, comments, conclusions and/or recommendations arising of this Mandate. The interpretations provided in the Report consider the laws, regulations, standards, policies, directives and best practices listed in the Report and considered while carrying out the works related to the Mandate. Accordingly, the interpretations provided in the report are of a technical nature only and do not constitute legal advice.

The work described in the Report is based on information expressly brought to the attention of HDS Environnement prior to said work, either by the Client or following diligent and reasonable research. HDS Environnement cannot be held responsible for any erroneous or missing information during the execution of said work.

Similarly, the interpretations provided in the Report are based on the results obtained within the framework of the Mandate, following specific analyzes carried out on samples taken at determined depths and at given locations, while carrying out the works related to the Mandate. These interpretations may not reflect actual variations in concentrations of materials or substances outside the scope of work of the Mandate. HDS Environnement can in no way be held responsible for these possible variations, as well as for any loss, fine, penalty, damage and/or prejudice, of any nature whatsoever, resulting directly or indirectly from them.



APPENDIX B

Calibration certificates

~ Calibration Certificate ~

Per ISO 16063-21

Model Number: 356B41

Serial Number: 415652 (x axis)

Description: ICP® Triaxial Accelerometer

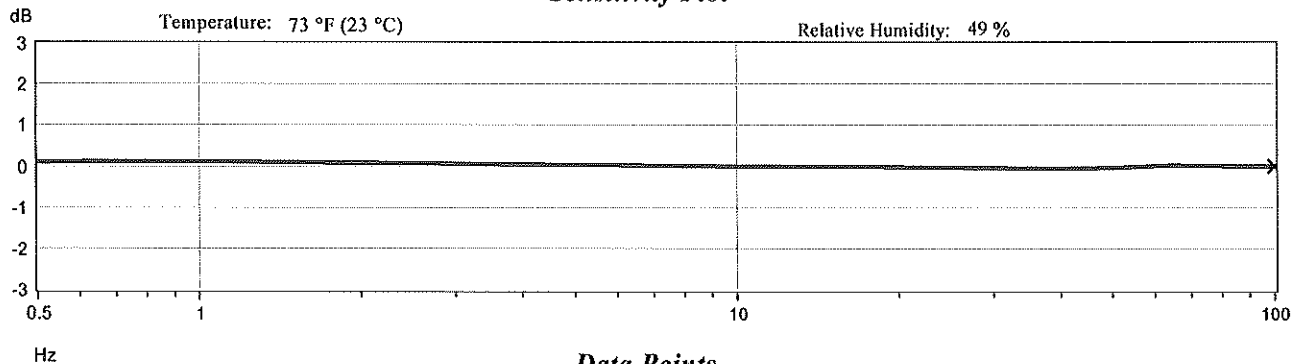
Manufacturer: PCB

Method: Back-to-Back Comparison AT401-12

Calibration Data

Sensitivity @ 100 Hz	102.8 mV/g (10.48 mV/m/s ²)	Output Bias	3.4 VDC
		Transverse Sensitivity	2.9 %

Sensitivity Plot



Data Points

Frequency (Hz)	Dev. (%)	Frequency (Hz)	Dev. (%)	Frequency (Hz)	Dev. (%)
0.5	1.1	10	-0.0	70	0.1
1	1.3	15	-0.2	REF. FREQ.	0.0
2	0.9	20	-0.3		
5	0.3	30	-0.5		
7	0.1	50	-0.5		

Mounting Surface: Aluminum Fixture Fastener: Stud Fixture Orientation: Inverted Vertical

Acceleration Level (pk): 1.00 g (9.81 m/s²)

*The acceleration level may be limited by shaker displacement at low frequencies. If the listed level cannot be obtained, the following formula is used to set the vibration amplitude; Acceleration Level (g) = 0.18317 x (freq).

**The gravitational constant used for calculations by the calibration system is: 1 g = 9.80665 m/s².

Condition of Unit

As Found: n/a

As Left: New Unit, In Tolerance

Where provided, statements of conformity are made in accordance with Simple Acceptance decision rule as defined in ILAC G8 with TUR of 4:1 or greater

Notes

1. Calibration is traceable to one or more of the following; PTB 17012, PTB 17016 and NIST 684/O-0000035821.
2. This certificate shall not be reproduced, except in full, without written approval from PCB Piezotronics, Inc.
3. Calibration is performed in compliance with ISO 10012-1, ANSI Z540.3 and ISO 17025.
4. Measurement results relate only to the items tested. Refer to Manufacturer's Specification Sheet for performance details.
5. Measurement uncertainty (95% confidence level with coverage factor of 2) for frequency ranges tested during calibration are as follows:
0.5-0.99 Hz; +/- 1.8%, 1-30 Hz; +/- 1.0%, 30.01-199 Hz; +/- 1.5%, 200-1 kHz; +/- 3.0%.

Technician: _____

Joshua Durow



Date: _____

12/9/2024



PCB PIEZOTRONICS
AN AMPHENOL COMPANY

3425 WALDEN AVENUE - DEPEW, NY 14043
TEL: +1 (888) 684-0013 - FAX: +1 (716) 685-3886 - www.pcb.com



~ Calibration Certificate ~

Per ISO 16063-21

Model Number: 356B41

Serial Number: 415652 (x axis)

Description: ICP® Triaxial Accelerometer

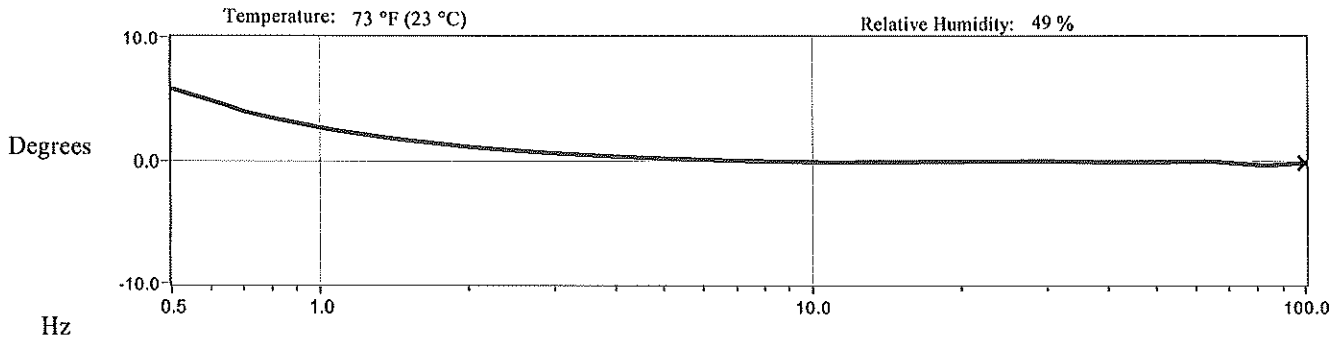
Manufacturer: PCB

Method: Back-to-Back Comparison AT401-12

Calibration Data

Sensitivity @ 100 Hz 102.8 mV/g
(10.48 mV/m/s²)

Phase Plot



Data Points

Frequency (Hz)	Phase (°)	Frequency (Hz)	Phase (°)	Frequency (Hz)	Phase (°)
0.5	5.8	10	-0.2	70	-0.2
1	2.6	15	-0.1	REF. FREQ.	-0.2
2	1.1	20	-0.1		
5	0.1	30	-0.1		
7	-0.0	50	-0.1		

Notes

1. Calibration is traceable to one or more of the following; PTB 17012, PTB 17016 and NIST 684/O-0000035821.
2. This certificate shall not be reproduced, except in full, without written approval from PCB Piezotronics, Inc.
3. Calibration is performed in compliance with ISO 10012-1, ANSI Z540.3 and ISO 17025.
4. Measurement results relate only to the items tested. Refer to Manufacturer's Specification Sheet for performance details.
5. Measurement uncertainty for Phase (95% confidence level with coverage factor of 2) for frequency ranges tested during calibration are as follows:
= 0.5 to < 10 Hz; +/- 2.5°, = 10 to < 200 Hz; +/- 0.75°, = 200 Hz to = 1 kHz; +/- 1.5°.

Technician: _____

Joshua Durow

JD
4495

Date: _____

12/9/2024



PCB PIEZOTRONICS
AN AMPHENOL COMPANY
3425 WALDEN AVENUE - DEPEW, NY 14043
TEL: +1 (888) 684-0013 - FAX: +1 (716) 685-3886 - www.pcb.com



~ Calibration Certificate ~

Per ISO 16063-21

Model Number: 356B41

Serial Number: 415652 (y axis)

Description: ICP® Triaxial Accelerometer

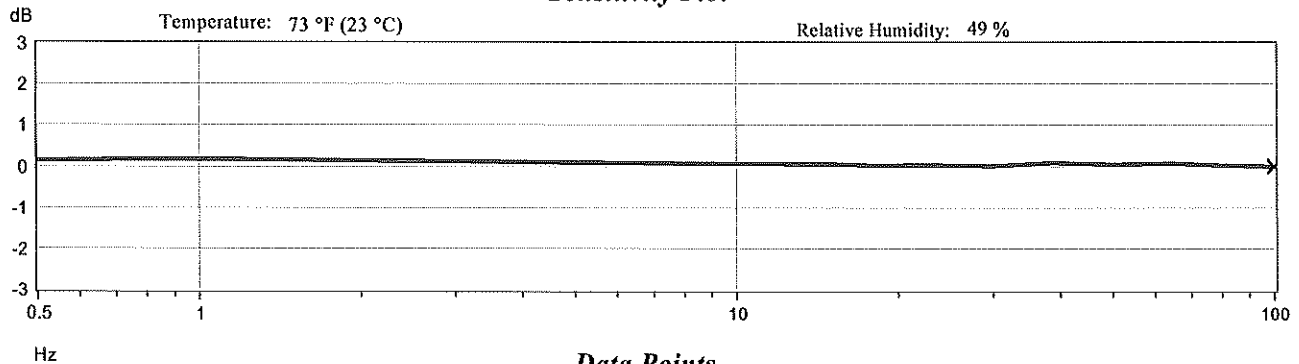
Manufacturer: PCB

Method: Back-to-Back Comparison AT401-12

Calibration Data

Sensitivity @ 100 Hz	95.9 mV/g (9.78 mV/m/s ²)	Output Bias	3.2 VDC
		Transverse Sensitivity	2.8 %

Sensitivity Plot



Data Points

Frequency (Hz)	Dev. (%)	Frequency (Hz)	Dev. (%)	Frequency (Hz)	Dev. (%)
0.5	1.6	10	0.7	70	0.5
1	1.9	15	0.6	REF. FREQ.	0.0
2	1.6	20	0.2		
5	1.0	30	0.0		
7	0.8	50	0.4		

Mounting Surface: Aluminum Fixture Fastener: Stud Fixture Orientation: Vertical
 Acceleration Level (pk): 1.00 g (9.81 m/s²)

¹The acceleration level may be limited by shaker displacement at low frequencies. If the listed level cannot be obtained, the following formula is used to set the vibration amplitude; Acceleration Level (g) = 0.18317 x (freq)².
²The gravitational constant used for calculations by the calibration system is; 1 g = 9.80665 m/s².

Condition of Unit

As Found: n/a

As Left: New Unit, In Tolerance

Where provided, statements of conformity are made in accordance with Simple Acceptance decision rule as defined in ILAC G8 with TUR of 4:1 or greater

Notes

1. Calibration is traceable to one or more of the following; PTB 17012, PTB 17016 and NIST 684/O-0000035821.
2. This certificate shall not be reproduced, except in full, without written approval from PCB Piezotronics, Inc.
3. Calibration is performed in compliance with ISO 10012-1, ANSI Z540.3 and ISO 17025.
4. Measurement results relate only to the items tested. Refer to Manufacturer's Specification Sheet for performance details.
5. Measurement uncertainty (95% confidence level with coverage factor of 2) for frequency ranges tested during calibration are as follows:
 0.5-0.99 Hz; +/- 1.8%, 1-30 Hz; +/- 1.0%, 30.01-199 Hz; +/- 1.5%, 200-1 kHz; +/- 3.0%.

Technician: _____

Joshua Durow

JD
4495

Date: _____

12/9/2024



PCB PIEZOTRONICS

AN AMPHENOL COMPANY

3425 WALDEN AVENUE - DEPEW, NY 14043
 TEL: +1 (888) 684-0013 - FAX: +1 (716) 685-3886 - www.pcb.com



~ Calibration Certificate ~

Per ISO 16063-21

Model Number: 356B41

Serial Number: 415652 (y axis)

Description: ICP® Triaxial Accelerometer

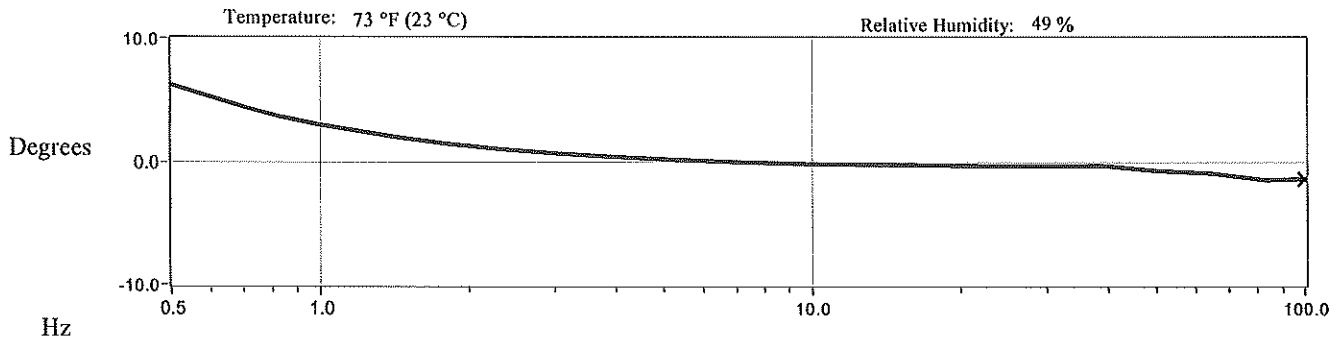
Manufacturer: PCB

Method: Back-to-Back Comparison AT401-12

Calibration Data

Sensitivity @ 100 Hz 95.9 mV/g
(9.78 mV/m/s²)

Phase Plot



Data Points

Frequency (Hz)	Phase (°)	Frequency (Hz)	Phase (°)	Frequency (Hz)	Phase (°)
0.5	6.2	10	-0.2	70	-1.1
1	2.9	15	-0.3	REF. FREQ.	-1.4
2	1.2	20	-0.4		
5	0.1	30	-0.4		
7	-0.1	50	-0.8		

Notes

1. Calibration is traceable to one or more of the following; PTB 17012, PTB 17016 and NIST 684/O-0000035821.
2. This certificate shall not be reproduced, except in full, without written approval from PCB Piezotronics, Inc.
3. Calibration is performed in compliance with ISO 10012-1, ANSI Z540.3 and ISO 17025.
4. Measurement results relate only to the items tested. Refer to Manufacturer's Specification Sheet for performance details.
5. Measurement uncertainty for Phase (95% confidence level with coverage factor of 2) for frequency ranges tested during calibration are as follows:
= 0.5 to < 10 Hz; +/- 2.5°, = 10 to < 200 Hz; +/- 0.75°, = 200 Hz to = 1 kHz; +/- 1.5°.

Technician: Joshua Durow JD
4495

Date: 12/9/2024



3425 WALDEN AVENUE - DEPEW, NY 14043
TEL: +1 (888) 684-0013 - FAX: +1 (716) 685-3886 - www.pcb.com



~ Calibration Certificate ~

Per ISO 16063-21

Model Number: 356B41

Serial Number: 415652 (z axis)

Description: ICP® Triaxial Accelerometer

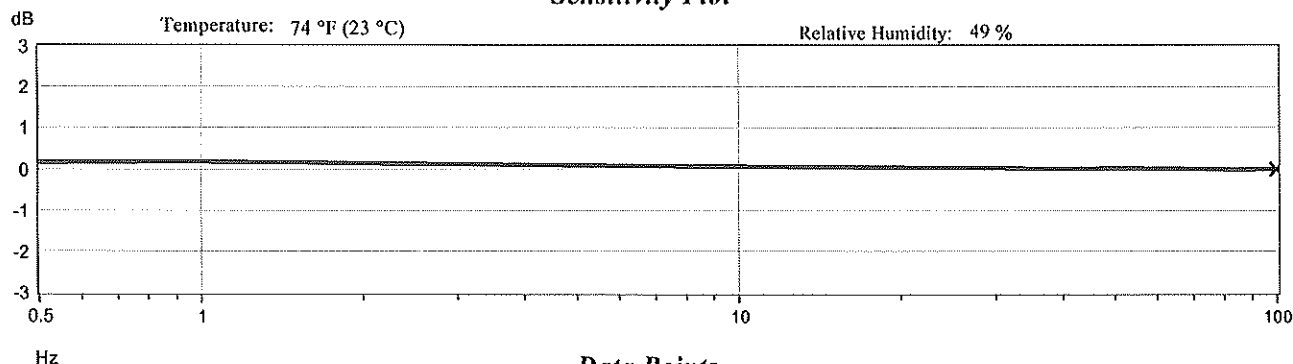
Manufacturer: PCB

Method: Back-to-Back Comparison AT401-12

Calibration Data

Sensitivity @ 100 Hz	103.9 mV/g (10.59 mV/m/s ²)	Output Bias	3.3 VDC
		Transverse Sensitivity	0.8 %

Sensitivity Plot



Data Points

Frequency (Hz)	Dev. (%)	Frequency (Hz)	Dev. (%)	Frequency (Hz)	Dev. (%)
0.5	1.8	10	0.7	70	0.0
1	2.0	15	0.6	REF. FREQ.	0.0
2	1.6	20	0.4		
5	1.0	30	0.2		
7	0.9	50	0.1		

Mounting Surface: Aluminum Fixture Fastener: Stud Fixture Orientation: Vertical

Acceleration Level (pk): 1.00 g (9.81 m/s²)

¹The acceleration level may be limited by shaker displacement at low frequencies. If the listed level cannot be obtained, the following formula is used to set the vibration amplitude; Acceleration Level (g) = 0.18317 x (freq)².

²The gravitational constant used for calculations by the calibration system is; 1 g = 9.80665 m/s².

Condition of Unit

As Found: n/a

As Left: New Unit, In Tolerance

Where provided, statements of conformity are made in accordance with Simple Acceptance decision rule as defined in ILAC G8 with TUR of 4:1 or greater

Notes

1. Calibration is traceable to one or more of the following; PTB 17012, PTB 17016 and NIST 684/O-0000035821.
2. This certificate shall not be reproduced, except in full, without written approval from PCB Piezotronics, Inc.
3. Calibration is performed in compliance with ISO 10012-1, ANSI Z540.3 and ISO 17025.
4. Measurement results relate only to the items tested. Refer to Manufacturer's Specification Sheet for performance details.
5. Measurement uncertainty (95% confidence level with coverage factor of 2) for frequency ranges tested during calibration are as follows:
0.5-0.99 Hz; +/- 1.8%, 1-30 Hz; +/- 1.0%, 30.01-199 Hz; +/- 1.5%, 200-1 kHz; +/- 3.0%.

Technician: _____

Joshua Durow



Date: _____

12/6/2024



3425 WALDEN AVENUE - DEPEW, NY 14043
TEL: +1 (888) 684-0013 - FAX: +1 (716) 685-3886 - www.pcb.com



~ Calibration Certificate ~

Per ISO 16063-21

Model Number: 356B41

Serial Number: 415652 (z axis)

Description: ICP® Triaxial Accelerometer

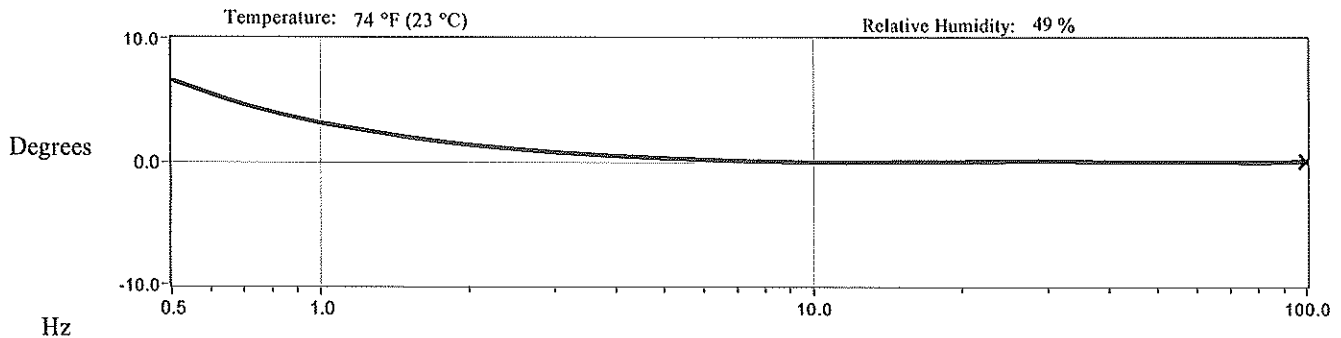
Manufacturer: PCB

Method: Back-to-Back Comparison AT401-12

Calibration Data

Sensitivity @ 100 Hz 103.9 mV/g
(10.59 mV/m/s²)

Phase Plot



Data Points

Frequency (Hz)	Phase (°)	Frequency (Hz)	Phase (°)	Frequency (Hz)	Phase (°)
0.5	6.6	10	-0.1	70	-0.1
1	3.1	15	-0.0	REF. FREQ.	0.0
2	1.3	20	-0.0		
5	0.3	30	0.0		
7	0.1	50	-0.0		

Notes

1. Calibration is traceable to one or more of the following; PTB 17012, PTB 17016 and NIST 684/O-0000035821.
2. This certificate shall not be reproduced, except in full, without written approval from PCB Piezotronics, Inc.
3. Calibration is performed in compliance with ISO 10012-1, ANSI Z540.3 and ISO 17025.
4. Measurement results relate only to the items tested. Refer to Manufacturer's Specification Sheet for performance details.
5. Measurement uncertainty for Phase (95% confidence level with coverage factor of 2) for frequency ranges tested during calibration are as follows:
= 0.5 to < 10 Hz; +/- 2.5°, = 10 to < 200 Hz; +/- 0.75°, = 200 Hz to = 1 kHz; +/- 1.5°.

Technician: _____

Joshua Durow

JD
4495

Date: _____

12/6/2024



PCB PIEZOTRONICS
AN AMPHENOL COMPANY

3425 WALDEN AVENUE - DEPEW, NY 14043
TEL: +1 (888) 684-0013 - FAX: +1 (716) 685-3886 - www.pcb.com



Calibration Certificate

Certificate Number 2025004841

Customer:

The Modal Shop
10310 AeroHub Boulevard
Cincinnati, OH 45215 United States

Model Number HVM200

Serial Number 0005086

Test Results **Pass**

Initial Condition Found / Left

Description Larson Davis Model HVM200

Procedure Number D0001.8391

Technician Tina Brezinski

Calibration Date 2025-04-01

Calibration Due

Temperature 22.3 °C ± 0.01 °C

Humidity 28.9 %RH ± 0.5 %RH

Static Pressure 99.95 kPa ± 0.03 kPa

Evaluation Method Tested electrically using ADSIT.99 test fixture. Data reported in m/s² with equivalent sensor sensitivity of 1 mV/m/s².

Compliance Standards Compliant to Manufacturer Specifications and the following standards:

ISO 8041-1:2017

IEC 61260:2014

ISO 8041-2:2021

ANSI S1.11

ANSI S2.70

The Modal Shop certifies that the instrument described above meets or exceeds all specifications as stated in the referenced procedure (unless otherwise noted). The results documented in this certificate relate only to the item(s) calibrated or tested. It has been calibrated using measurement standards traceable to the SI through the National Institute of Standards and Technology (NIST), or other national measurement institutes.

This calibration is a direct comparison of the unit under test to the listed reference standards and did not involve any sampling plans to complete. No allowance has been made for the instability of the test device due to use, time, etc. Such allowances will be made by the customer as needed.

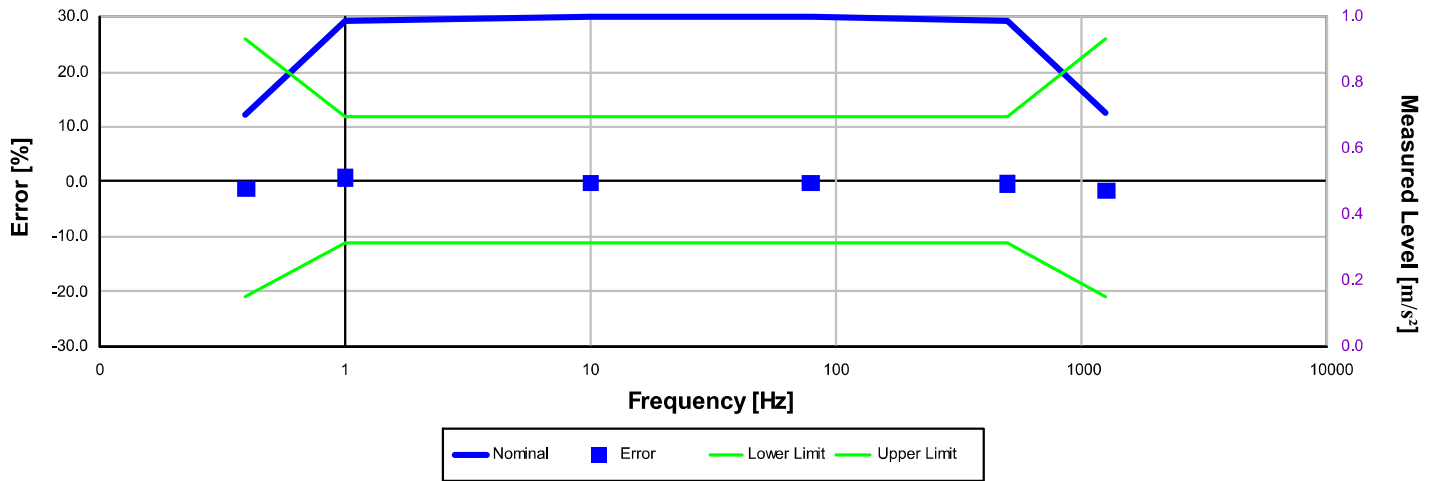
The uncertainties were computed in accordance with the ISO Guide to the Expression of Uncertainty in Measurement (GUM). A coverage factor of approximately 2 sigma (k=2) has been applied to the standard uncertainty to express the expanded uncertainty at approximately 95% confidence level.

This report may not be reproduced, except in full, unless permission for the publication of an approved abstract is obtained in writing from the organization issuing this report.

Standards Used

Description	Cal Date	Cal Due	Cal Standard
SRS DS360 Ultra Low Distortion Generator	2024-04-25	2025-04-25	TMS123270

X-Axis, Fb-weighting

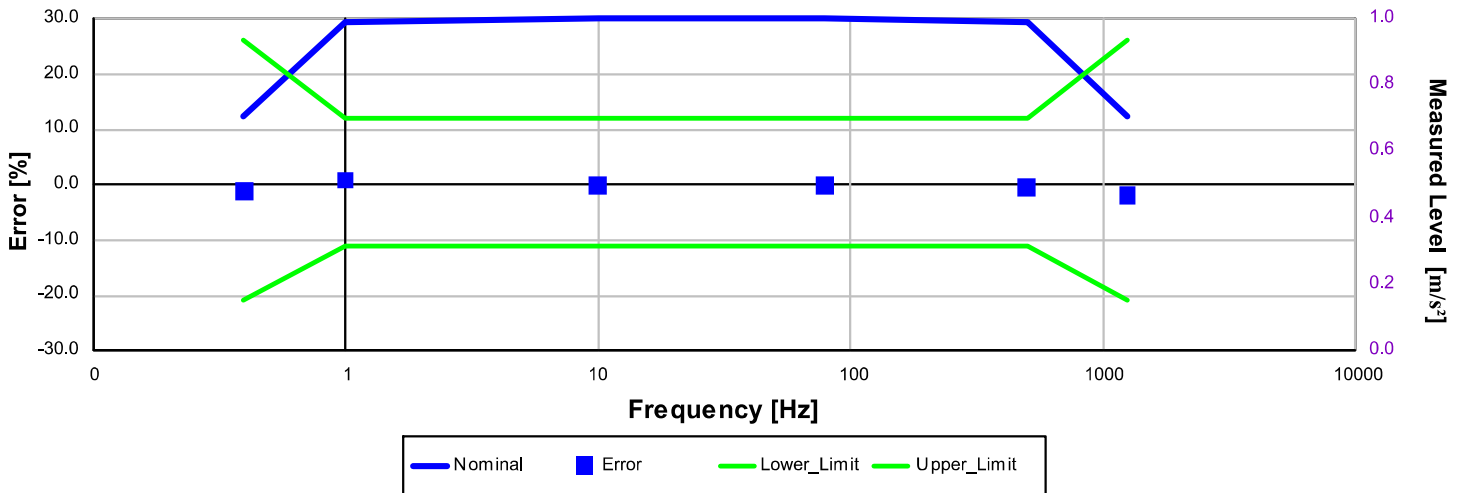


Electrical signal test of frequency weighting performed according to ISO 8041-1:2017 12.11.3 and ISO 8042-1:2021 12.11.3

Frequency [Hz]	Test Result [m/s ²]	Error [%]	Lower limit [%]	Upper limit [%]	Expanded Uncertainty [%]	Result
0.40	0.6950	-1.2	-21.0	26.0	1.7	Pass
1.00	0.9951	0.8	-11.0	12.0	1.7	Pass
10.00	0.9984	-0.2	-11.0	12.0	1.7	Pass
79.43	0.9989	-0.1	-11.0	12.0	1.7	Pass
501.19	0.9841	-0.4	-11.0	12.0	1.7	Pass
1,258.90	0.6949	-1.7	-21.0	26.0	1.7	Pass

-- End of measurement results--

Y-Axis, Fb-weighting

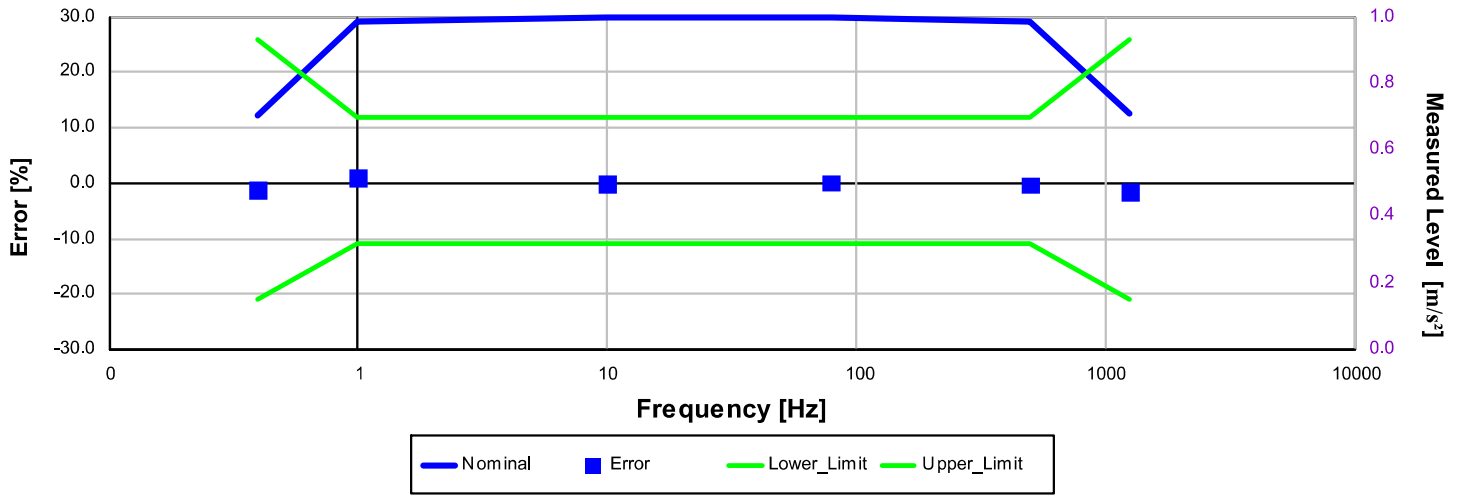


Electrical signal test of frequency weighting performed according to ISO 8041-1:2017 12.11.3 and ISO 8042-1:2021 12.11.3

Frequency [Hz]	Test Result [m/s ²]	Error [%]	Lower limit [%]	Upper limit [%]	Expanded Uncertainty [%]	Result
0.40	0.6949	-1.3	-21.0	26.0	1.7	Pass
1.00	0.9951	0.8	-11.0	12.0	1.7	Pass
10.00	0.9984	-0.2	-11.0	12.0	1.7	Pass
79.43	0.9989	-0.1	-11.0	12.0	1.7	Pass
501.19	0.9840	-0.4	-11.0	12.0	1.7	Pass
1,258.90	0.6945	-1.8	-21.0	26.0	1.7	Pass

-- End of measurement results--

Z-Axis, Fb-weighting



Electrical signal test of frequency weighting performed according to ISO 8041-1:2017 12.11.3 and ISO 8042-1:2021 12.11.3

Frequency [Hz]	Test Result [m/s ²]	Error [%]	Lower limit [%]	Upper limit [%]	Expanded Uncertainty [%]	Result
0.40	0.6950	-1.2	-21.0	26.0	1.7	Pass
1.00	0.9952	0.8	-11.0	12.0	1.7	Pass
10.00	0.9984	-0.2	-11.0	12.0	1.7	Pass
79.43	0.9989	-0.1	-11.0	12.0	1.7	Pass
501.19	0.9840	-0.4	-11.0	12.0	1.7	Pass
1,258.90	0.6946	-1.8	-21.0	26.0	1.7	Pass

-- End of measurement results--

Overload Detector

Overload indication performed according to ISO 8041-1:2017 12.14 and ISO 8042-1:2021 12.14 with Fb-weighting

Measurement	Nominal [m/s ²]	Test Result [m/s ²]	Lower limit [%]	Upper limit [%]	Expanded Uncertainty [%]	Result
X-Axis: Negative	4,931.68	4,931.68	-15.0	15.0	2.0	Pass
X-Axis: Positive	4,931.68	4,931.68	-15.0	15.0	2.0	Pass
Y-Axis: Negative	4,931.68	4,931.68	-15.0	15.0	2.0	Pass
Y-Axis: Positive	4,931.68	4,655.81	-15.0	15.0	2.0	Pass
Z-Axis: Negative	4,931.68	4,931.68	-15.0	15.0	2.0	Pass
Z-Axis: Positive	4,931.68	4,931.68	-15.0	15.0	2.0	Pass

-- End of measurement results--

Overload Comparison

Overload indication performed according to ISO 8041-1:2017 12.14 and ISO 8041-2:2021 12.16 with Fb-weighting

Measurement	Test Result [%]	Lower limit [%]	Upper limit [%]	Expanded Uncertainty [%]	Result
X-Axis	-3.7	-15.0	15.0	2.3	Pass
Y-Axis	5.9	-15.0	15.0	2.3	Pass
Z-Axis	-3.7	-15.0	15.0	2.3	Pass

-- End of measurement results--

Cross-talk (Fb-weighting)

Cross-talk performed according to ISO 8041-1:2017 12.8 and ISO 8041-2:2021 12.8

Injected : Read	Test Result [%]	Upper Limit [%]	Expanded Uncertainty [%]	Result
<i>X-Axis : Y-Axis</i>	0.0	0.5	1.7	Pass
<i>X-Axis : Z-Axis</i>	0.0	0.5	1.7	Pass
<i>Y-Axis : X-Axis</i>	0.0	0.5	1.7	Pass
<i>Y-Axis : Z-Axis</i>	0.0	0.5	1.7	Pass
<i>Z-Axis : X-Axis</i>	0.0	0.5	1.7	Pass
<i>Z-Axis : Y-Axis</i>	0.0	0.5	1.7	Pass

-- End of measurement results--

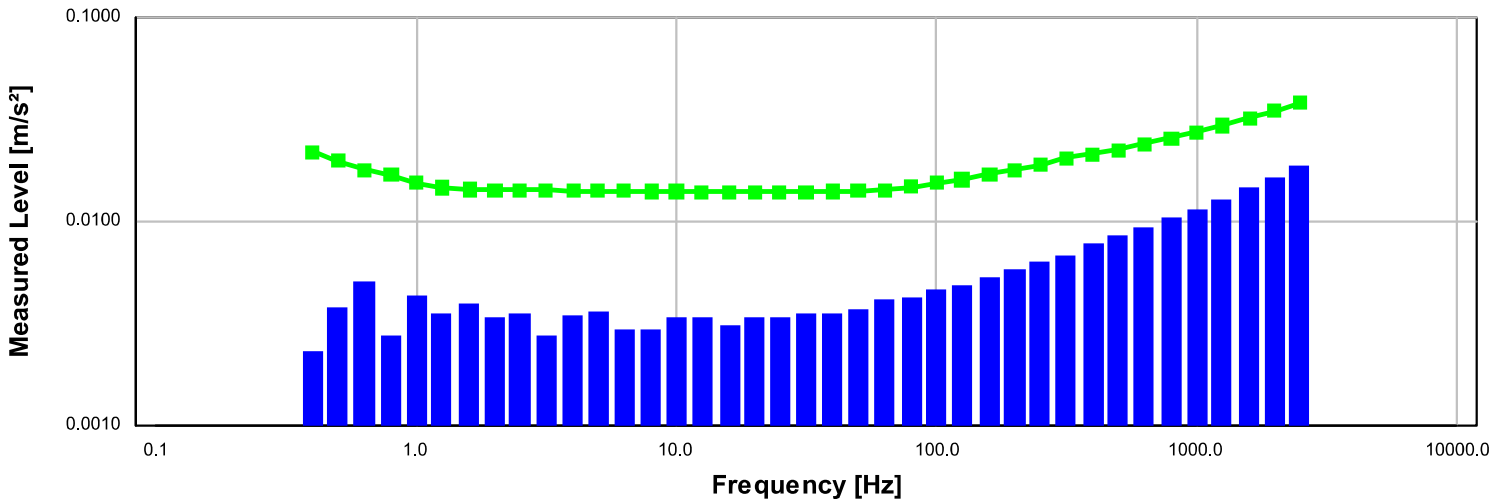
Frequency-weighted Noise Floor

Self-generated noise measured according to ISO 8041-1:2017 12.12 and ISO 8041-2:2021 12.12

Weighting	Axis	Test Result [m/s ²]	Upper limit [m/s ²]	Result
Fb	X-Axis	0.031836	0.066800	Pass
	Y-Axis	0.048029	0.066800	Pass
	Z-Axis	0.032185	0.066800	Pass

-- End of measurement results--

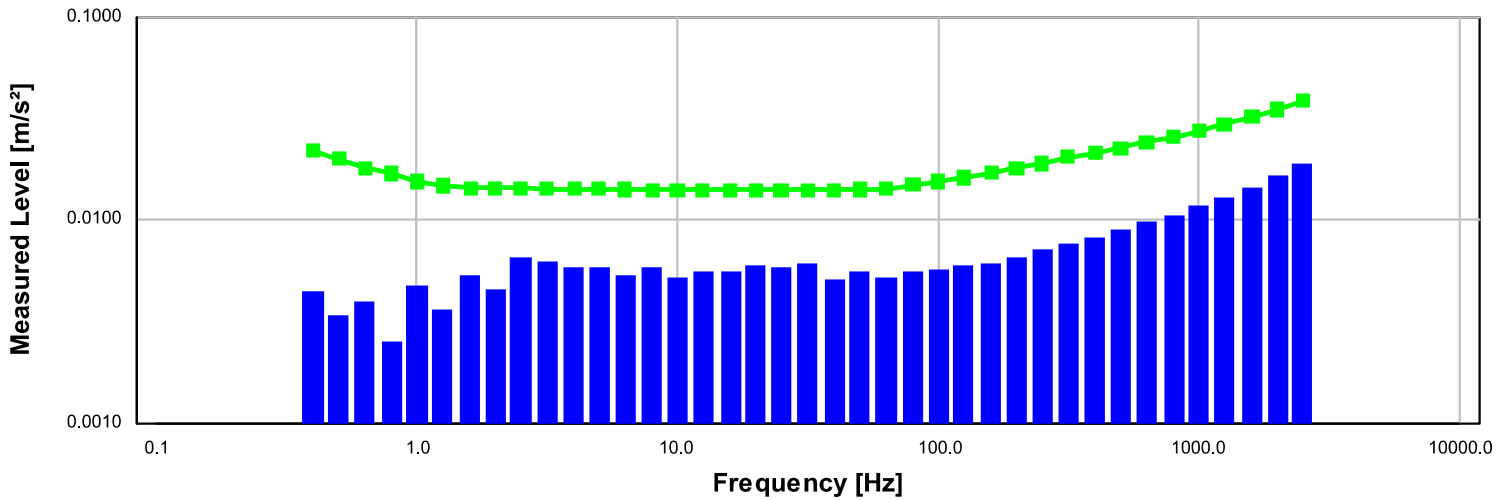
X-Axis 1/3-Octave Self-Generated Noise



Frequency [Hz]	Test Result [m/s ²]	Upper limit [m/s ²]	Result
0.40	0.002299	0.022000	Pass
0.50	0.003784	0.020000	Pass
0.63	0.005041	0.018000	Pass
0.80	0.002748	0.017000	Pass
1.00	0.004312	0.015500	Pass
1.25	0.003549	0.014800	Pass
1.60	0.003978	0.014400	Pass
2.00	0.003416	0.014350	Pass
2.50	0.003569	0.014320	Pass
3.15	0.002740	0.014300	Pass
4.00	0.003433	0.014250	Pass
5.00	0.003615	0.014200	Pass
6.30	0.002938	0.014150	Pass
8.00	0.002966	0.014100	Pass
10.00	0.003427	0.014070	Pass
12.50	0.003386	0.014050	Pass
16.00	0.003089	0.014030	Pass
20.00	0.003364	0.014010	Pass
25.00	0.003402	0.014000	Pass
31.50	0.003585	0.014010	Pass
40.00	0.003569	0.014080	Pass
50.00	0.003736	0.014180	Pass
63.00	0.004139	0.014300	Pass
80.00	0.004231	0.014900	Pass
100.00	0.004620	0.015500	Pass
125.00	0.004847	0.016200	Pass
160.00	0.005354	0.017100	Pass
200.00	0.005863	0.018000	Pass
250.00	0.006429	0.019000	Pass
315.00	0.006909	0.020500	Pass
400.00	0.007822	0.021500	Pass
500.00	0.008486	0.022580	Pass
630.00	0.009284	0.024170	Pass
800.00	0.010498	0.025740	Pass
1,000.00	0.011626	0.027530	Pass
1,250.00	0.012881	0.029730	Pass
1,600.00	0.014760	0.032310	Pass
2,000.00	0.016413	0.035000	Pass

Frequency [Hz]	Test Result [m/s ²]	Upper limit [m/s ²]	Result
2,500.00	0.018984	0.038500	Pass
-- End of measurement results--			

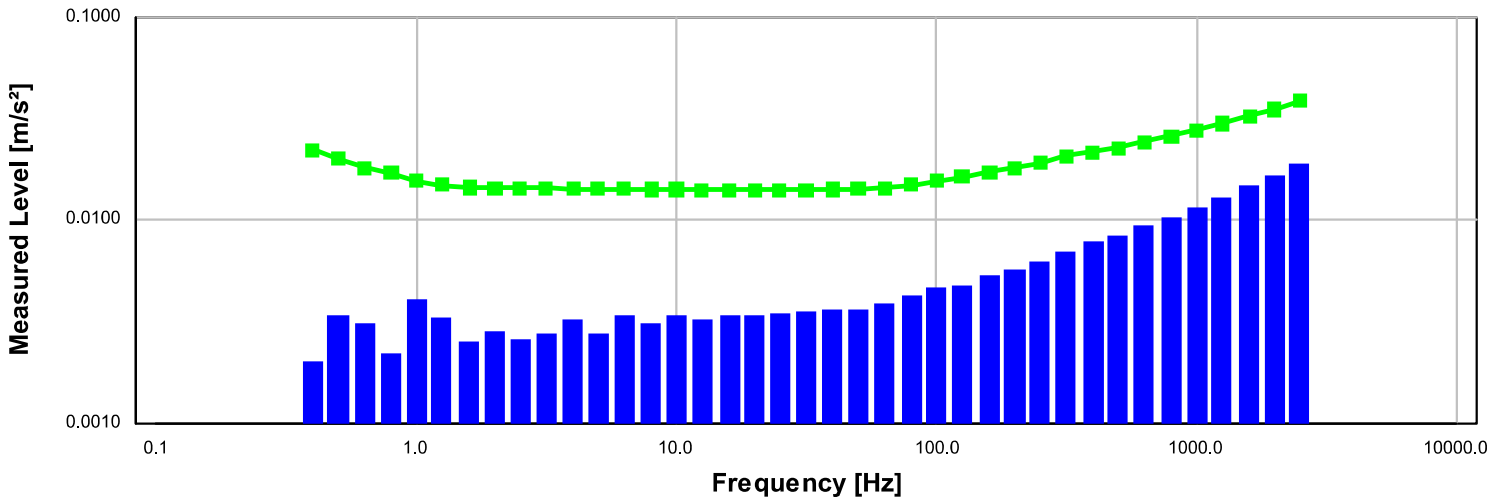
Y-Axis 1/3-Octave Self-Generated Noise



Frequency [Hz]	Test Result [m/s ²]	Upper limit [m/s ²]	Result
0.40	0.004493	0.022000	Pass
0.50	0.003384	0.020000	Pass
0.63	0.004017	0.018000	Pass
0.80	0.002503	0.017000	Pass
1.00	0.004784	0.015500	Pass
1.25	0.003644	0.014800	Pass
1.60	0.005324	0.014400	Pass
2.00	0.004564	0.014350	Pass
2.50	0.006581	0.014320	Pass
3.15	0.006264	0.014300	Pass
4.00	0.005792	0.014250	Pass
5.00	0.005889	0.014200	Pass
6.30	0.005282	0.014150	Pass
8.00	0.005806	0.014100	Pass
10.00	0.005244	0.014070	Pass
12.50	0.005556	0.014050	Pass
16.00	0.005646	0.014030	Pass
20.00	0.005990	0.014010	Pass
25.00	0.005809	0.014000	Pass
31.50	0.006137	0.014010	Pass
40.00	0.005153	0.014080	Pass
50.00	0.005579	0.014180	Pass
63.00	0.005179	0.014300	Pass
80.00	0.005548	0.014900	Pass
100.00	0.005710	0.015500	Pass
125.00	0.005947	0.016200	Pass
160.00	0.006110	0.017100	Pass
200.00	0.006527	0.018000	Pass
250.00	0.007095	0.019000	Pass
315.00	0.007696	0.020500	Pass
400.00	0.008216	0.021500	Pass
500.00	0.008941	0.022580	Pass
630.00	0.009897	0.024170	Pass
800.00	0.010644	0.025740	Pass
1,000.00	0.011713	0.027530	Pass
1,250.00	0.012944	0.029730	Pass
1,600.00	0.014543	0.032310	Pass
2,000.00	0.016416	0.035000	Pass

Frequency [Hz]	Test Result [m/s ²]	Upper limit [m/s ²]	Result
2,500.00	0.019118	0.038500	Pass
-- End of measurement results--			

Z-Axis 1/3-Octave Self-Generated Noise



Frequency [Hz]	Test Result [m/s ²]	Upper limit [m/s ²]	Result
0.40	0.002027	0.022000	Pass
0.50	0.003413	0.020000	Pass
0.63	0.003066	0.018000	Pass
0.80	0.002196	0.017000	Pass
1.00	0.004009	0.015500	Pass
1.25	0.003311	0.014800	Pass
1.60	0.002491	0.014400	Pass
2.00	0.002788	0.014350	Pass
2.50	0.002571	0.014320	Pass
3.15	0.002737	0.014300	Pass
4.00	0.003199	0.014250	Pass
5.00	0.002737	0.014200	Pass
6.30	0.003389	0.014150	Pass
8.00	0.003061	0.014100	Pass
10.00	0.003341	0.014070	Pass
12.50	0.003256	0.014050	Pass
16.00	0.003348	0.014030	Pass
20.00	0.003345	0.014010	Pass
25.00	0.003460	0.014000	Pass
31.50	0.003564	0.014010	Pass
40.00	0.003582	0.014080	Pass
50.00	0.003615	0.014180	Pass
63.00	0.003833	0.014300	Pass
80.00	0.004215	0.014900	Pass
100.00	0.004609	0.015500	Pass
125.00	0.004778	0.016200	Pass
160.00	0.005278	0.017100	Pass
200.00	0.005688	0.018000	Pass
250.00	0.006247	0.019000	Pass
315.00	0.006950	0.020500	Pass
400.00	0.007761	0.021500	Pass
500.00	0.008356	0.022580	Pass
630.00	0.009386	0.024170	Pass
800.00	0.010258	0.025740	Pass
1,000.00	0.011501	0.027530	Pass
1,250.00	0.012910	0.029730	Pass
1,600.00	0.014806	0.032310	Pass
2,000.00	0.016587	0.035000	Pass

Frequency [Hz]	Test Result [m/s ²]	Upper limit [m/s ²]	Result
2,500.00	0.019084	0.038500	Pass
-- End of measurement results--			

-- End of Report--

Signatory: Tina Brezinski

The Modal Shop
10310 AeroHub Boulevard
Cincinnati, OH 45215 United States



Calibration Certificate

Certificate Number 2025011396

Customer:
HDS Environment

Model Number CAL200
Serial Number 21489
Test Results Pass
Initial Condition AS RECEIVED same as shipped
Description Larson Davis CAL200 Acoustic Calibrator

Procedure Number D0001.8386
Technician Scott Montgomery
Calibration Date 2025-08-18
Calibration Due
Temperature 23 °C ± 0.3 °C
Humidity 30 %RH ± 3 %RH
Static Pressure 101.0 kPa ± 1 kPa

Evaluation Method The data is acquired by the insert voltage calibration method using the reference microphone's open circuit sensitivity. Data reported in dB re 20 µPa.

Compliance Standards Compliant to Manufacturer Specifications per D0001.8190 and the following standards:
IEC 60942:2017 ANSI S1.40-2006

Issuing lab certifies that the instrument described above meets or exceeds all specifications as stated in the referenced procedure (unless otherwise noted). The results documented in this certificate relate only to the item(s) calibrated or tested. It has been calibrated using measurement standards traceable to the SI through the National Institute of Standards and Technology (NIST), or other national measurement institutes, and meets the requirements of ISO/IEC 17025:2017.

Test points marked with a ‡ in the uncertainties column do not fall within this laboratory's scope of accreditation.

The quality system is registered to ISO 9001:2015.

This calibration is a direct comparison of the unit under test to the listed reference standards and did not involve any sampling plans to complete. No allowance has been made for the instability of the test device due to use, time, etc. Such allowances would be made by the customer as needed.

The uncertainties were computed in accordance with the ISO Guide to the Expression of Uncertainty in Measurement (GUM). A coverage factor of approximately 2 sigma (k=2) has been applied to the standard uncertainty to express the expanded uncertainty at approximately 95% confidence level.

This report may not be reproduced, except in full, unless permission for the publication of an approved abstract is obtained in writing from the organization issuing this report.

Standards Used			
Description	Cal Date	Cal Due	Cal Standard
Pressure Sensor	2025-01-22	2026-01-22	007815
NI USB-4431 signal acquisition module	2025-01-14	2026-01-14	007904
Larson Davis 2221 Preamplifier Power Supply	2025-01-13	2026-01-13	007916
Keysight 34461A DMM	2025-02-21	2026-02-21	007917
1/2" Preamplifier	2025-01-07	2026-01-07	PCB0000548
1/2 inch Microphone - Random Incidence - 200V	2025-02-21	2026-02-21	PCB0103682

LARSON DAVIS – A PCB DIVISION
1681 West 820 North
Provo, UT 84601 United States
716-684-0001



Output Level

Nominal Level [dB @ Hz]	Pressure [kPa]	Test Result [dB]	Lower limit [dB]	Upper limit [dB]	Expanded Uncertainty [dB]	Result
94 @ 1000.0	101.0	93.96	93.80	94.20	0.15	Pass
114 @ 1000.0	101.1	113.98	113.80	114.20	0.15	Pass

-- End of measurement results--

Frequency

Nominal Level [dB @ Hz]	Pressure [kPa]	Test Result [Hz]	Lower limit [Hz]	Upper limit [Hz]	Expanded Uncertainty [Hz]	Result
94 @ 1000.0	101.0	1,000.42	993.00	1,007.00	0.20	Pass
114 @ 1000.0	101.1	1,000.44	993.00	1,007.00	0.20	Pass

-- End of measurement results--

Total Harmonic Distortion + Noise (THD+N)

Nominal Level [dB @ Hz]	Pressure [kPa]	Test Result [%]	Lower limit [%]	Upper limit [%]	Expanded Uncertainty [%]	Result
94 @ 1000.0	101.0	0.71	0.00	2.00	0.25 ‡	Pass
114 @ 1000.0	101.1	0.32	0.00	2.00	0.25 ‡	Pass

-- End of measurement results--

Level Change Over Pressure

Tested at: 114 dB, 23 °C, 30 %RH

Nominal Pressure [kPa (dB @ Hz)]	Pressure [kPa]	Test Result [dB]	Lower limit [dB]	Upper limit [dB]	Expanded Uncertainty [dB]	Result
108.0 (114 @ 1000.0)	108.0	-0.02	-0.25	0.25	0.04 ‡	Pass
101.3 (114 @ 1000.0)	101.4	0.00	-0.25	0.25	0.04 ‡	Pass
92.0 (114 @ 1000.0)	92.0	0.01	-0.25	0.25	0.04 ‡	Pass
83.0 (114 @ 1000.0)	83.1	0.00	-0.25	0.25	0.04 ‡	Pass
74.0 (114 @ 1000.0)	74.1	-0.04	-0.25	0.25	0.04 ‡	Pass
65.0 (114 @ 1000.0)	65.0	-0.12	-0.25	0.25	0.04 ‡	Pass

-- End of measurement results--

Frequency Change Over Pressure

Tested at: 114 dB, 23 °C, 30 %RH

Nominal Pressure [kPa (dB @ Hz)]	Pressure [kPa]	Test Result [Hz]	Lower limit [Hz]	Upper limit [Hz]	Expanded Uncertainty [Hz]	Result
108.0 (114 @ 1000.0)	108.0	0.00	-7.00	7.00	0.20 ‡	Pass
101.3 (114 @ 1000.0)	101.4	0.00	-7.00	7.00	0.20 ‡	Pass
92.0 (114 @ 1000.0)	92.0	0.00	-7.00	7.00	0.20 ‡	Pass
83.0 (114 @ 1000.0)	83.1	0.00	-7.00	7.00	0.20 ‡	Pass
74.0 (114 @ 1000.0)	74.1	0.00	-7.00	7.00	0.20 ‡	Pass
65.0 (114 @ 1000.0)	65.0	0.00	-7.00	7.00	0.20 ‡	Pass

-- End of measurement results--



Total Harmonic Distortion + Noise (THD+N) Over Pressure

Tested at: 114 dB, 23 °C, 30 %RH

Nominal Pressure [kPa (dB @ Hz)]	Pressure [kPa]	Test Result [%]	Lower limit [%]	Upper limit [%]	Expanded Uncertainty [%]	Result
108.0 (114 @ 1000.0)	108.0	0.33	0.00	2.00	0.25 ‡	Pass
101.3 (114 @ 1000.0)	101.4	0.32	0.00	2.00	0.25 ‡	Pass
92.0 (114 @ 1000.0)	92.0	0.32	0.00	2.00	0.25 ‡	Pass
83.0 (114 @ 1000.0)	83.1	0.31	0.00	2.00	0.25 ‡	Pass
74.0 (114 @ 1000.0)	74.1	0.31	0.00	2.00	0.25 ‡	Pass
65.0 (114 @ 1000.0)	65.0	0.33	0.00	2.00	0.25 ‡	Pass

-- End of measurement results--

Signatory: Scott Montgomery

LARSON DAVIS – A PCB DIVISION
 1681 West 820 North
 Provo, UT 84601 United States
 716-684-0001



Calibration Certificate

Certificate Number 2025011605

Customer:

HDS Environnement

Model Number	Spartan 821	Procedure Number	D0001.8466
Serial Number	30013	Technician	Jacob Cannon
Test Results	Pass	Calibration Date	2025-08-21
Initial Condition	Adjusted	Calibration Due	
Description	Spartan 821 Class 1 Sound Level Meter Firmware Revision: 1.502R12	Temperature	23.43 °C ± 0.25 °C
		Humidity	50.7 %RH ± 2.0 %RH
		Static Pressure	86.41 kPa ± 0.13 kPa

Evaluation Method **Tested with:** **Data reported in dB re 20 µPa.**

TMS 9917C. S/N 219
Larson Davis CAL200. S/N 9079
PCB 377B02. S/N 348790
Larson Davis PRM821. S/N 001203

Compliance Standards Compliant to Manufacturer Specifications and the following standards when combined with Calibration Certificate from procedure D0001.8467:

IEC 60651:2001 Type 1	ANSI S1.4-2014 Class 1
IEC 60804:2000 Type 1	ANSI S1.4 (R2006) Type 1
IEC 61260:2014 Class 1	ANSI S1.11-2014 Class 1
IEC 61672:2013 Class 1	ANSI S1.43 (R2007) Type 1

Issuing lab certifies that the instrument described above meets or exceeds all specifications as stated in the referenced procedure (unless otherwise noted). The results documented in this certificate relate only to the item(s) calibrated or tested. It has been calibrated using measurement standards traceable to the International System of Units (SI) through the National Institute of Standards and Technology (NIST), or other national measurement institutes, and meets the requirements of ISO/IEC 17025:2017.

Test points marked with a ‡ in the uncertainties column do not fall within this laboratory's scope of accreditation.

The quality system is registered to ISO 9001:2015.

This calibration is a direct comparison of the unit under test to the listed reference standards and did not involve any sampling plans to complete. No allowance has been made for the instability of the test device due to use, time, etc. Such allowances would be made by the customer as needed.

The uncertainties were computed in accordance with the ISO Guide to the Expression of Uncertainty in Measurement (GUM). A coverage factor of approximately 2 sigma (k=2) has been applied to the standard uncertainty to express the expanded uncertainty at approximately 95% confidence level.

This report may not be reproduced, except in full, unless permission for the publication of an approved abstract is obtained in writing from the organization issuing this report.

Correction data from Larson Davis Spartan 721/821 Manual, I821.03 Rev B

For 1/4" microphones, the Larson Davis ADP024 1/4" to 1/2" adaptor is used with the calibrators and the Larson Davis ADP043 1/4" to 1/2" adaptor is used with the preamplifier.

LARSON DAVIS – A PCB DIVISION

1681 West 820 North
Provo, UT 84601 United States
716-684-0001



LARSON DAVIS
A PCB DIVISION

Certificate Number 2025011605

Calibration Check Frequency: 1000 Hz; Reference Sound Pressure Level: 114 dB re 20 µPa

Periodic tests were performed in accordance with procedures from IEC 61672-3:2013 / ANSI/ASA S1.4-2014/Part3.

No Pattern approval for IEC 61672-1:2013 / ANSI/ASA S1.4-2014/Part 1 available.

The sound level meter submitted for testing successfully completed the periodic tests of IEC 61672-3:2013 / ANSI/ASA S1.4-2014/Part 3, for the environmental conditions under which the tests were performed. However, no general statement or conclusion can be made about conformance of the sound level meter to the full specifications of IEC 61672-1:2013 / ANSI/ASA S1.4-2014/Part 1 because (a) evidence was not publicly available, from an independent testing organization responsible for pattern approvals, to demonstrate that the model of sound level meter fully conformed to the class 1 specifications in IEC 61672-1:2013 / ANSI/ASA S1.4-2014/Part 1 or correction data for acoustical test of frequency weighting were not provided in the Instruction Manual and (b) because the periodic tests of IEC 61672-3:2013 / ANSI/ASA S1.4-2014/Part 3 cover only a limited subset of the specifications in IEC 61672-1:2013 / ANSI/ASA S1.4-2014/Part 1.

Standards Used			
Description	Cal Date	Cal Due	Cal Standard
Hart Scientific 2626-S Humidity/Temperature Sensor	2024-05-07	2025-11-07	006943
Larson Davis CAL200 Acoustic Calibrator	2025-07-18	2026-07-18	007027
PCB 377A13 1/2 inch Prepolarized Pressure Microphone	2025-02-12	2026-02-12	007080
Larson Davis Model 831	2025-02-17	2026-02-17	007182
SRS DS360 Ultra Low Distortion Generator	2025-03-26	2026-03-26	007635
TMS 9917C-LD Microphone Comparison Calibrator	2025-03-13	2026-03-13	007649
Larson Davis 1/2" Preamp for Model 831 Type 1	2024-09-30	2025-09-30	PCB0004783

Acoustic Calibration

Measured according to IEC 61672-3:2013 10 and ANSI S1.4-2014 Part 3: 10

Measurement	Test Result [dB]	Lower Limit [dB]	Upper Limit [dB]	Expanded Uncertainty [dB]	Result
1000 Hz	114.00	113.80	114.20	0.14	Pass

As Received Level: 115.11
Adjusted Level: 114.00

-- End of measurement results--

Loaded Circuit Sensitivity

Measurement	Test Result [dB re 1 V / Pa]	Lower Limit [dB re 1 V / Pa]	Upper Limit [dB re 1 V / Pa]	Expanded Uncertainty [dB]	Result
1000 Hz	-24.89	-27.50	-24.50	0.14	Pass

-- End of measurement results--



Acoustic Signal Tests, C-weighting

Measured according to IEC 61672-3:2013 12 and ANSI S1.4-2014 Part 3: 12 using a comparison coupler with Unit Under Test (UUT) and reference SLM using slow time-weighted sound level for compliance to IEC 61672-1:2013 5.5; ANSI S1.4-2014 Part 1: 5.5

Frequency [Hz]	Test Result [dB]	Expected [dB]	Lower Limit [dB]	Upper Limit [dB]	Expanded Uncertainty [dB]	Result
125	-0.30	-0.20	-1.20	0.80	0.60	Pass
1000	0.21	0.00	-0.70	0.70	0.60	Pass
8000	-2.02	-3.00	-5.50	-1.50	0.81	Pass

-- End of measurement results--

Self-generated Noise

Measured according to IEC 61672-3:2013 11.1 and ANSI S1.4-2014 Part 3: 11.1

Measurement	Test Result [dB]
A-weighted	24.69

-- End of measurement results--

-- End of Report--

Signatory: Jacob Cannon



Calibration Certificate

Certificate Number 2025011345

Customer:

HDS Environnement

Model Number	Spartan 821	Procedure Number	D0001.8465
Serial Number	30013	Technician	Jacob Cannon
Test Results	Pass	Calibration Date	2025-08-15
Initial Condition	AS RECEIVED same as shipped	Calibration Due	
Description	Spartan 821 Class 1 Sound Level Meter Firmware Revision: 1.502R12	Temperature	23.71 °C ± 0.25 °C
		Humidity	48.8 %RH ± 2.0 %RH
		Static Pressure	86.22 kPa ± 0.13 kPa

Evaluation Method Tested electrically using Larson Davis PRM821 S/N 001203 and a 12.0 pF capacitor to simulate microphone capacitance. Data reported in dB re 20 µPa assuming a microphone sensitivity of 50.0 mV/Pa.

Compliance Standards Compliant to Manufacturer Specifications and the following standards when combined with Calibration Certificate from procedure D0001.8468:

IEC 60651:2001 Type 1	ANSI S1.4-2014 Class 1
IEC 60804:2000 Type 1	ANSI S1.4 (R2006) Type 1
IEC 61252:2002	ANSI S1.25 (R2007)
IEC 61672:2013 Class 1	ANSI S1.43 (R2007) Type 1

Issuing lab certifies that the instrument described above meets or exceeds all specifications as stated in the referenced procedure (unless otherwise noted). The results documented in this certificate relate only to the item(s) calibrated or tested. It has been calibrated using measurement standards traceable to the International System of Units (SI) through the National Institute of Standards and Technology (NIST), or other national measurement institutes, and meets the requirements of ISO/IEC 17025:2017. **Test points marked with a ‡ in the uncertainties column do not fall within this laboratory's scope of accreditation.**

The quality system is registered to ISO 9001:2015.

This calibration is a direct comparison of the unit under test to the listed reference standards and did not involve any sampling plans to complete. No allowance has been made for the instability of the test device due to use, time, etc. Such allowances would be made by the customer as needed.

The uncertainties were computed in accordance with the ISO Guide to the Expression of Uncertainty in Measurement (GUM). A coverage factor of approximately 2 sigma (k=2) has been applied to the standard uncertainty to express the expanded uncertainty at approximately 95% confidence level.

This report may not be reproduced, except in full, unless permission for the publication of an approved abstract is obtained in writing from the organization issuing this report.

Correction data from Larson Davis Spartan 721/821 Manual, I821.03 Rev B

Calibration Check Frequency: 1000 Hz; Reference Sound Pressure Level: 114 dB re 20 µPa

Periodic tests were performed in accordance with procedures from IEC 61672-3:2013 / ANSI/ASA S1.4-2014/Part3.

LARSON DAVIS – A PCB DIVISION

1681 West 820 North

Provo, UT 84601 United States

716-684-0001



 **LARSON DAVIS**
A PCB DIVISION

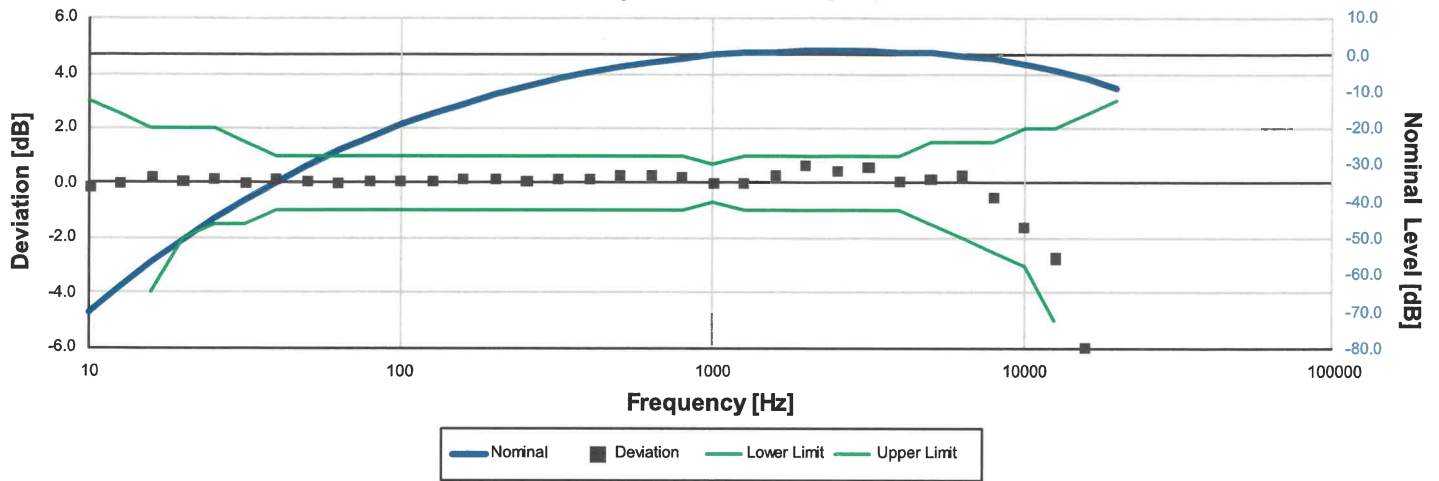
No Pattern approval for IEC 61672-1:2013 / ANSI/ASA S1.4-2014/Part 1 available.

The sound level meter submitted for testing successfully completed the periodic tests of IEC 61672-3:2013 / ANSI/ASA S1.4-2014/Part 3, for the environmental conditions under which the tests were performed. However, no general statement or conclusion can be made about conformance of the sound level meter to the full specifications of IEC 61672-1:2013 / ANSI/ASA S1.4-2014/Part 1 because (a) evidence was not publicly available, from an independent testing organization responsible for pattern approvals, to demonstrate that the model of sound level meter fully conformed to the class 1 specifications in IEC 61672-1:2013 / ANSI/ASA S1.4-2014/Part 1 or correction data for acoustical test of frequency weighting were not provided in the Instruction Manual and (b) because the periodic tests of IEC 61672-3:2013 / ANSI/ASA S1.4-2014/Part 3 cover only a limited subset of the specifications in IEC 61672-1:2013 / ANSI/ASA S1.4-2014/Part 1.

Description	Standards Used		
	Cal Date	Cal Due	Cal Standard
Hart Scientific 2626-S Humidity/Temperature Sensor	2024-05-07	2025-11-07	006943
SRS DS360 Ultra Low Distortion Generator	2025-03-26	2026-03-26	007635



A-weight Filter Response



Test performed with FF:FF microphone correction filter enabled. Electrical signal test of frequency weighting performed according to IEC 61672-3:2013 13 and ANSI S1.4-2014 Part 3: 13 for compliance to IEC 61672-1:2013 5.5; IEC 60651:2001 6.1 and 9.2.2; IEC 60804:2000 5; ANSI S1.4:1983 (R2006) 5.1 and 8.2.1; ANSI S1.4-2014 Part 1: 5.5

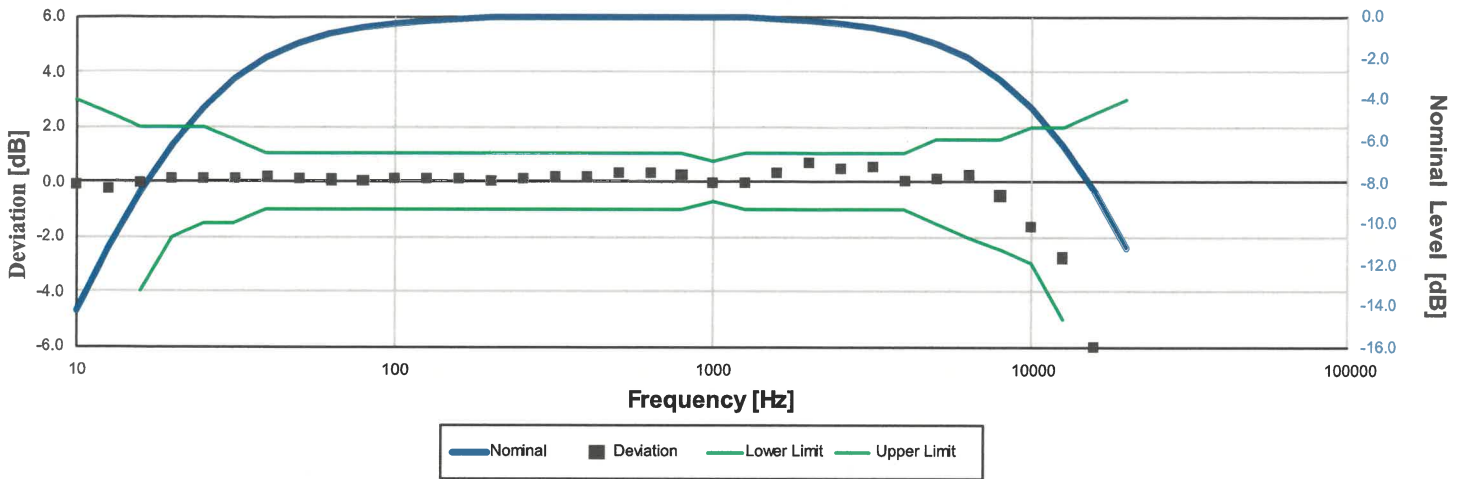
Frequency [Hz]	Test Result [dB]	Deviation [dB]	Lower limit [dB]	Upper limit [dB]	Expanded Uncertainty [dB]	Result
10.00	-70.54	-0.14	-inf	3.00	0.15	Pass
12.59	-63.41	-0.01	-inf	2.50	0.15	Pass
15.85	-56.50	0.20	-4.00	2.00	0.15	Pass
19.95	-50.42	0.08	-2.00	2.00	0.15	Pass
25.12	-44.54	0.16	-1.50	2.00	0.15	Pass
31.62	-39.41	-0.01	-1.50	1.50	0.15	Pass
39.81	-34.46	0.14	-1.00	1.00	0.15	Pass
50.12	-30.11	0.09	-1.00	1.00	0.15	Pass
63.10	-26.17	0.03	-1.00	1.00	0.29	Pass
79.43	-22.42	0.08	-1.00	1.00	0.29	Pass
100.00	-19.05	0.05	-1.00	1.00	0.29	Pass
125.89	-16.03	0.07	-1.00	1.00	0.29	Pass
158.49	-13.24	0.16	-1.00	1.00	0.29	Pass
199.53	-10.77	0.13	-1.00	1.00	0.29	Pass
251.19	-8.55	0.05	-1.00	1.00	0.29	Pass
316.23	-6.48	0.12	-1.00	1.00	0.29	Pass
398.11	-4.67	0.13	-1.00	1.00	0.29	Pass
501.19	-2.94	0.26	-1.00	1.00	0.29	Pass
630.96	-1.61	0.29	-1.00	1.00	0.29	Pass
794.33	-0.58	0.22	-1.00	1.00	0.29	Pass
1,000.00	0.00	0.00	-0.70	0.70	0.29	Pass
1,258.93	0.61	0.01	-1.00	1.00	0.29	Pass
1,584.89	1.31	0.31	-1.00	1.00	0.29	Pass
1,995.26	1.87	0.67	-1.00	1.00	0.29	Pass
2,511.89	1.73	0.43	-1.00	1.00	0.38	Pass
3,162.28	1.78	0.58	-1.00	1.00	0.38	Pass
3,981.07	1.06	0.06	-1.00	1.00	0.38	Pass
5,011.87	0.65	0.15	-1.50	1.50	0.47	Pass
6,309.57	0.15	0.25	-2.00	1.50	0.47	Pass
7,943.28	-1.60	-0.50	-2.50	1.50	0.47	Pass
10,000.00	-4.12	-1.62	-3.00	2.00	0.57	Pass
12,589.25	-7.03	-2.73	-5.00	2.00	0.57	Pass
15,848.93	-12.56	-5.96	-16.00	2.50	1.00	Pass
19,952.62	-24.15	-14.85	-inf	3.00	1.00	Pass

-- End of measurement results--

LARSON DAVIS – A PCB DIVISION
 1681 West 820 North
 Provo, UT 84601 United States
 716-684-0001



C-weight Filter Response



Test performed with FF:FF microphone correction filter enabled. Electrical signal test of frequency weighting performed according to IEC 61672-3:2013 13 and ANSI S1.4-2014 Part 3: 13 for compliance to IEC 61672-1:2013 5.5; IEC 60651:2001 6.1 and 9.2.2; IEC 60804:2000 5; ANSI S1.4:1983 (R2006) 5.1 and 8.2.1; ANSI S1.4-2014 Part 1: 5.5

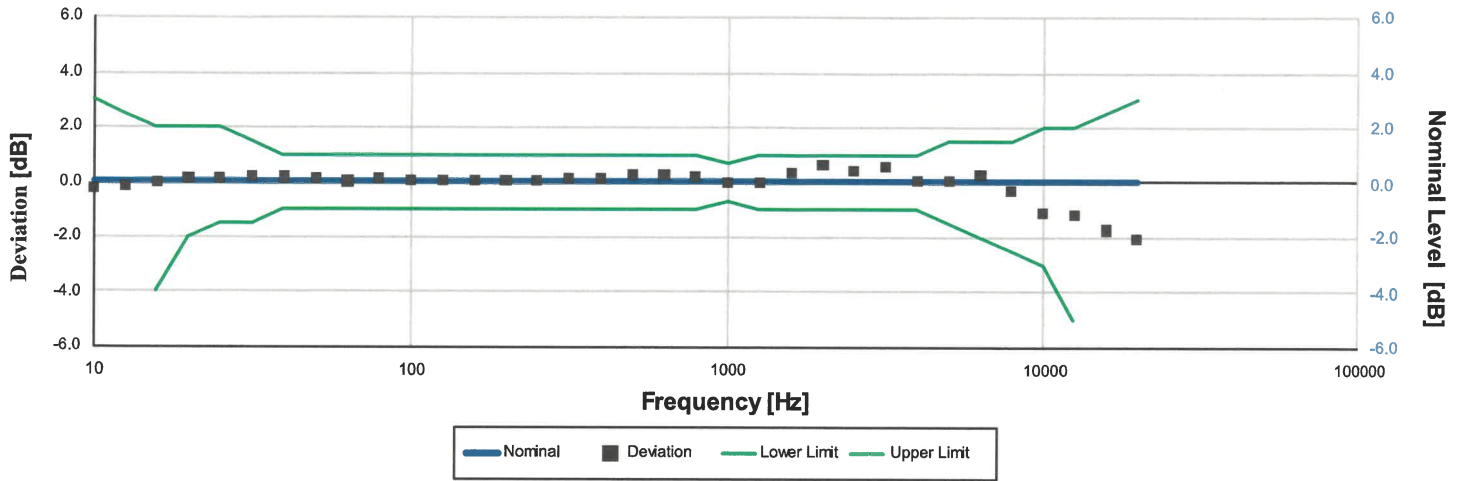
Frequency [Hz]	Test Result [dB]	Deviation [dB]	Lower limit [dB]	Upper limit [dB]	Expanded Uncertainty [dB]	Result
10.00	-14.38	-0.08	-inf	3.00	0.15	Pass
12.59	-11.42	-0.22	-inf	2.50	0.15	Pass
15.85	-8.51	-0.01	-4.00	2.00	0.15	Pass
19.95	-6.11	0.09	-2.00	2.00	0.15	Pass
25.12	-4.31	0.09	-1.50	2.00	0.15	Pass
31.62	-2.90	0.10	-1.50	1.50	0.15	Pass
39.81	-1.83	0.17	-1.00	1.00	0.15	Pass
50.12	-1.18	0.12	-1.00	1.00	0.15	Pass
63.10	-0.72	0.08	-1.00	1.00	0.29	Pass
79.43	-0.44	0.06	-1.00	1.00	0.29	Pass
100.00	-0.21	0.09	-1.00	1.00	0.29	Pass
125.89	-0.08	0.12	-1.00	1.00	0.29	Pass
158.49	0.02	0.13	-1.00	1.00	0.29	Pass
199.53	0.07	0.07	-1.00	1.00	0.29	Pass
251.19	0.10	0.10	-1.00	1.00	0.29	Pass
316.23	0.17	0.17	-1.00	1.00	0.29	Pass
398.11	0.16	0.16	-1.00	1.00	0.29	Pass
501.19	0.32	0.32	-1.00	1.00	0.29	Pass
630.96	0.32	0.32	-1.00	1.00	0.29	Pass
794.33	0.26	0.26	-1.00	1.00	0.29	Pass
1,000.00	0.00	0.00	-0.70	0.70	0.29	Pass
1,258.93	-0.02	-0.02	-1.00	1.00	0.29	Pass
1,584.89	0.25	0.35	-1.00	1.00	0.29	Pass
1,995.26	0.50	0.70	-1.00	1.00	0.29	Pass
2,511.89	0.15	0.45	-1.00	1.00	0.38	Pass
3,162.28	0.07	0.57	-1.00	1.00	0.38	Pass
3,981.07	-0.73	0.07	-1.00	1.00	0.38	Pass
5,011.87	-1.20	0.10	-1.50	1.50	0.47	Pass
6,309.57	-1.74	0.26	-2.00	1.50	0.47	Pass
7,943.28	-3.50	-0.50	-2.50	1.50	0.47	Pass
10,000.00	-6.04	-1.64	-3.00	2.00	0.57	Pass
12,589.25	-8.96	-2.76	-5.00	2.00	0.57	Pass
15,848.93	-14.49	-5.99	-16.00	2.50	1.00	Pass
19,952.62	-26.09	-14.89	-inf	3.00	1.00	Pass

-- End of measurement results--

LARSON DAVIS – A PCB DIVISION
 1681 West 820 North
 Provo, UT 84601 United States
 716-684-0001



Z-weight Filter Response



Test performed with FF:FF microphone correction filter enabled. Electrical signal test of frequency weighting performed according to IEC 61672-3:2013 13 and ANSI S1.4-2014 Part 3: 13 for compliance to IEC 61672-1:2013 5.5; IEC 60651:2001 6.1 and 9.2.2; IEC 60804:2000 5; ANSI S1.4:1983 (R2006) 5.1 and 8.2.1; ANSI S1.4-2014 Part 1: 5.5

Frequency [Hz]	Test Result [dB]	Deviation [dB]	Lower limit [dB]	Upper limit [dB]	Expanded Uncertainty [dB]	Result
10.00	-0.24	-0.24	-inf	3.00	0.15	Pass
12.59	-0.12	-0.12	-inf	2.50	0.15	Pass
15.85	-0.03	-0.03	-4.00	2.00	0.15	Pass
19.95	0.11	0.11	-2.00	2.00	0.15	Pass
25.12	0.15	0.15	-1.50	2.00	0.15	Pass
31.62	0.21	0.21	-1.50	1.50	0.15	Pass
39.81	0.18	0.18	-1.00	1.00	0.15	Pass
50.12	0.13	0.13	-1.00	1.00	0.15	Pass
63.10	0.04	0.04	-1.00	1.00	0.29	Pass
79.43	0.13	0.13	-1.00	1.00	0.29	Pass
100.00	0.10	0.10	-1.00	1.00	0.29	Pass
125.89	0.07	0.07	-1.00	1.00	0.29	Pass
158.49	0.10	0.10	-1.00	1.00	0.29	Pass
199.53	0.10	0.10	-1.00	1.00	0.29	Pass
251.19	0.10	0.10	-1.00	1.00	0.29	Pass
316.23	0.15	0.15	-1.00	1.00	0.29	Pass
398.11	0.14	0.14	-1.00	1.00	0.29	Pass
501.19	0.29	0.29	-1.00	1.00	0.29	Pass
630.96	0.28	0.28	-1.00	1.00	0.29	Pass
794.33	0.24	0.24	-1.00	1.00	0.29	Pass
1,000.00	0.00	0.00	-0.70	0.70	0.29	Pass
1,258.93	0.01	0.01	-1.00	1.00	0.29	Pass
1,584.89	0.33	0.33	-1.00	1.00	0.29	Pass
1,995.26	0.66	0.66	-1.00	1.00	0.29	Pass
2,511.89	0.44	0.44	-1.00	1.00	0.38	Pass
3,162.28	0.56	0.56	-1.00	1.00	0.38	Pass
3,981.07	0.07	0.07	-1.00	1.00	0.38	Pass
5,011.87	0.08	0.08	-1.50	1.50	0.47	Pass
6,309.57	0.29	0.29	-2.00	1.50	0.47	Pass
7,943.28	-0.32	-0.32	-2.50	1.50	0.47	Pass
10,000.00	-1.08	-1.08	-3.00	2.00	0.57	Pass
12,589.25	-1.17	-1.17	-5.00	2.00	0.57	Pass
15,848.93	-1.72	-1.72	-16.00	2.50	1.00	Pass
19,952.62	-2.04	-2.04	-inf	3.00	1.00	Pass

-- End of measurement results--

LARSON DAVIS – A PCB DIVISION
 1681 West 820 North
 Provo, UT 84601 United States
 716-684-0001



High Level Stability

Electrical signal test of high level stability performed according to IEC 61672-3:2013 21 and ANSI S1.4-2014 Part 3: 21 for compliance to IEC 61672-1:2013 5.15 and ANSI S1.4-2014 Part 1: 5.15

Measurement	Test Result [dB]	Lower limit [dB]	Upper limit [dB]	Expanded Uncertainty [dB]	Result
High Level Stability	0.00	-0.10	0.10	0.01 ‡	Pass
-- End of measurement results--					

Long-Term Stability

Electrical signal test of long term stability performed according to IEC 61672-3:2013 15 and ANSI S1.4-2014 Part 3: 15 for compliance to IEC 61672-1:2013 5.14 and ANSI S1.4-2014 Part 1: 5.14

Test Duration [min]	Test Result [dB]	Lower limit [dB]	Upper limit [dB]	Expanded Uncertainty [dB]	Result
26	0.00	-0.10	0.10	0.01 ‡	Pass
-- End of measurement results--					

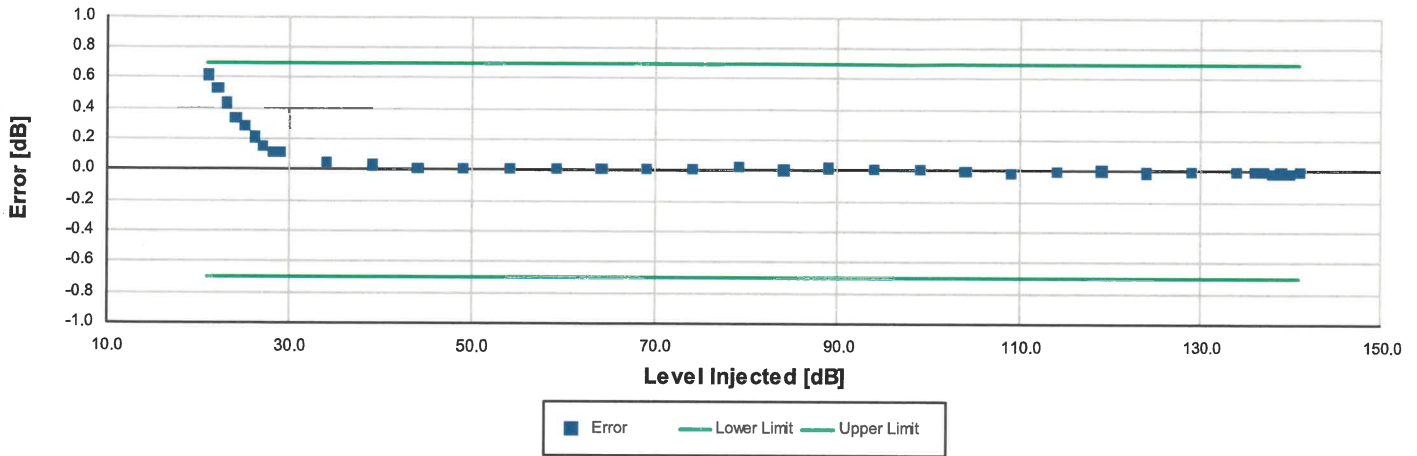
1 kHz Reference Levels

Frequency weightings and time weightings at 1 kHz (reference is A weighted Fast) performed according to IEC 61672-3:2013 14 and ANSI S1.4-2014 Part 3: 14 for compliance to IEC 61672-1:2013 5.5.9 and 5.8.3 and ANSI S1.4-2014 Part 1: 5.5.9 and 5.8.3

Measurement	Test Result [dB]	Lower limit [dB]	Upper limit [dB]	Expanded Uncertainty [dB]	Result
peak C weight	0.01	-0.20	0.20	0.15	Pass
peak Z weight	0.01	-0.20	0.20	0.15	Pass
C weight	0.01	-0.20	0.20	0.15	Pass
Z weight	0.01	-0.20	0.20	0.15	Pass
Slow	0.00	-0.10	0.10	0.15	Pass
Impulse	0.00	-0.10	0.10	0.15	Pass
-- End of measurement results--					



A-weighted Broadband Log Linearity: 8,000.00 Hz



Broadband level linearity performed according to IEC 61672-3:2013 16 and ANSI S1.4-2014 Part 3: 16 for compliance to IEC 61672-1:2013 5.6, IEC 60804:2000 6.2, IEC 61252:2002 8, ANSI S1.4 (R2006) 6.9, ANSI S1.4-2014 Part 1: 5.6, ANSI S1.43 (R2007) 6.2

Level [dB]	Error [dB]	Lower limit [dB]	Upper limit [dB]	Expanded Uncertainty [dB]	Result
21.00	0.62	-0.70	0.70	0.16	Pass
22.00	0.53	-0.70	0.70	0.16	Pass
23.00	0.43	-0.70	0.70	0.16	Pass
24.00	0.34	-0.70	0.70	0.16	Pass
25.00	0.29	-0.70	0.70	0.16	Pass
26.00	0.21	-0.70	0.70	0.16	Pass
27.00	0.15	-0.70	0.70	0.16	Pass
28.00	0.12	-0.70	0.70	0.16	Pass
29.00	0.12	-0.70	0.70	0.16	Pass
34.00	0.05	-0.70	0.70	0.16	Pass
39.00	0.03	-0.70	0.70	0.16	Pass
44.00	0.01	-0.70	0.70	0.16	Pass
49.00	0.01	-0.70	0.70	0.16	Pass
54.00	0.01	-0.70	0.70	0.16	Pass
59.00	0.01	-0.70	0.70	0.16	Pass
64.00	0.02	-0.70	0.70	0.16	Pass
69.00	0.01	-0.70	0.70	0.16	Pass
74.00	0.02	-0.70	0.70	0.16	Pass
79.00	0.02	-0.70	0.70	0.16	Pass
84.00	0.01	-0.70	0.70	0.16	Pass
89.00	0.02	-0.70	0.70	0.16	Pass
94.00	0.01	-0.70	0.70	0.16	Pass
99.00	0.01	-0.70	0.70	0.16	Pass
104.00	0.00	-0.70	0.70	0.16	Pass
109.00	-0.01	-0.70	0.70	0.15	Pass
114.00	0.00	-0.70	0.70	0.15	Pass
119.00	0.01	-0.70	0.70	0.15	Pass
124.00	-0.01	-0.70	0.70	0.15	Pass
129.00	0.00	-0.70	0.70	0.15	Pass
134.00	0.00	-0.70	0.70	0.15	Pass
136.00	0.00	-0.70	0.70	0.15	Pass
137.00	0.00	-0.70	0.70	0.15	Pass
138.00	-0.01	-0.70	0.70	0.15	Pass
139.00	-0.01	-0.70	0.70	0.15	Pass
140.00	-0.02	-0.70	0.70	0.15	Pass
141.00	0.00	-0.70	0.70	0.15	Pass

LARSON DAVIS – A PCB DIVISION
 1681 West 820 North
 Provo, UT 84601 United States
 716-684-0001



-- End of measurement results--

Slow Detector

Toneburst response performed according to IEC 61672-3:2013 18 and ANSI S1.4-2014 Part 3: 18 for compliance to IEC 61672-1:2013 5.9, IEC 60651:2001 9.4.2, ANSI S1.4:1983 (R2006) 8.4.2 and ANSI S1.4-2014 Part 1: 5.9

Amplitude [dB]	Duration [ms]	Test Result [dB]	Lower limit [dB]	Upper limit [dB]	Expanded Uncertainty [dB]	Result
137.00	200	-7.45	-7.92	-6.92	0.15	Pass
	2	-27.01	-29.99	-25.99	0.15	Pass

-- End of measurement results--

Fast Detector

Toneburst response performed according to IEC 61672-3:2013 18 and ANSI S1.4-2014 Part 3: 18 for compliance to IEC 61672-1:2013 5.9, IEC 60651:2001 9.4.2, ANSI S1.4:1983 (R2006) 8.4.2 and ANSI S1.4-2014 Part 1: 5.9

Amplitude [dB]	Duration [ms]	Test Result [dB]	Lower limit [dB]	Upper limit [dB]	Expanded Uncertainty [dB]	Result
137.00	200.00	-1.03	-1.48	-0.48	0.15	Pass
	2.00	-18.14	-19.49	-16.99	0.15	Pass
	0.25	-27.26	-29.99	-25.99	0.15	Pass

-- End of measurement results--

Sound Exposure Level

Toneburst response performed according to IEC 61672-3:2013 18 and ANSI S1.4-2014 Part 3: 18 for compliance to IEC 61672-1:2013 5.9, IEC 60651:2001 9.4.2, ANSI S1.4:1983 (R2006) 8.4.2 and ANSI S1.4-2014 Part 1: 5.9

Amplitude [dB]	Duration [ms]	Test Result [dB]	Lower limit [dB]	Upper limit [dB]	Expanded Uncertainty [dB]	Result
137.00	200.00	-7.00	-7.49	-6.49	0.15	Pass
	2.00	-27.03	-28.49	-25.99	0.15	Pass
	0.25	-36.14	-39.02	-35.02	0.15	Pass

-- End of measurement results--

Peak C-weight

C-weighted peak sound level performed according to IEC 61672-3:2013 19 and ANSI S1.4-2014 Part 3: 19 for compliance to IEC 61672-1:2013 5.13 and ANSI S1.4-2014 Part 1: 5.13

Level [dB]	Frequency [Hz]	Test Result [dB]	Lower limit [dB]	Upper limit [dB]	Expanded Uncertainty [dB]	Result
135.00	31.50	137.78	135.50	139.50	0.15	Pass
135.00	500.00	138.51	137.50	139.50	0.15	Pass
135.00	8,000.00	137.57	136.40	140.40	0.15	Pass
135.00, Negative	500.00	137.24	136.40	138.40	0.15	Pass
135.00, Positive	500.00	137.24	136.40	138.40	0.15	Pass

-- End of measurement results--



Overload Detector

Overload indication performed according to IEC 61672-3:2013 20 and ANSI S1.4-2014 Part 3: 20 for compliance to IEC 61672-1:2013 5.11, IEC 60804:2000 9.3.5, IEC 61252:2002 11, ANSI S1.4 (R2006) 5.8, and ANSI S1.4-2014 Part 1: 5.11, ANSI S1.25 (R2007) 7.6, ANSI S1.43 (R2007) 7

Measurement	Test Result [dB]	Lower limit [dB]	Upper limit [dB]	Expanded Uncertainty [dB]	Result
Positive	141.91	140.50	142.50	0.15	Pass
Negative	141.91	140.50	142.50	0.15	Pass
Comparison	0.00	-1.50	1.50	0.15	Pass
-- End of measurement results--					

Range

Measured in A-weight at 8000 Hz for compliance to IEC 61672-1:2013 5.6.4, IEC 60804:2000 6.2, IEC 61252:2002 8, ANSI S1.4 (R2006) 6.9, ANSI S1.4-2014 Part 1: 5.6.4, ANSI S1.43 (R2007) 6.2

Measurement	Measured Level [dB]	Lower limit [dB]	Expanded Uncertainty [dB]	Result
Primary Indicator Range	123.00	106.00	0.15	Pass
Dynamic Range	130.00	118.00	0.15	Pass
-- End of measurement results--				

Gain

Gain measured according to IEC 61672-3:2013 17.3 and 17.4 and ANSI S1.4-2014 Part 3: 17.3 and 17.4

Measurement	Test Result [dB]	Lower limit [dB]	Upper limit [dB]	Expanded Uncertainty [dB]	Result
0 dB Gain	93.94	93.20	94.80	0.15	Pass
0 dB Gain, Linearity	27.14	26.24	27.64	0.16	Pass
-- End of measurement results--					

Broadband Noise Floor

Self-generated noise measured according to IEC 61672-3:2013 11.2 and ANSI S1.4-2014 Part 3: 11.2

Measurement	Test Result [dB]	Upper limit [dB]	Result
A-weight Noise Floor	12.00	14.50	Pass
C-weight Noise Floor	14.28	16.70	Pass
Z-weight Noise Floor	22.66	25.00	Pass

-- End of measurement results--

-- End of Report--

Signatory: Jacob Cannon

LARSON DAVIS – A PCB DIVISION
 1681 West 820 North
 Provo, UT 84601 United States
 716-684-0001





APPENDIX C

Session reports indoor noise levels

Spartan 821 Sommaire

Informations générales sur l'instrument

	Modèle	Sériel
Mètre	Spartan 821	30013
Préampli	PRM821	
Microphone	377B02	
Identifiant de fichier unique	00753D:692680B0:00001DE8	

Notes de mesure

Utilisateur	
Emplacement	Sailiivik Camp - Room D2-26
Description de l'emploi	
Note	

Mesure globale

Heure de départ	2025-11-26 04:23:12	
Heure d'arrêt	2025-11-26 18:55:22	
Durée de mesure	14:32:10.00	
Pré-étalonnage		
Date / heure	2025-11-26 04:13:38	
Niveau sonore	114,00 dB	
Sensibilité de l'instrument	-25,54 dB re 1V/Pa	52,84 mV/Pa
Post-étalonnage		
Date / heure	2025-11-26 18:57:00	
Niveau sonore	114,00 dB	
Sensibilité de l'instrument	-25,49 dB re 1V/Pa	53,15 mV/Pa
Delta de la sensibilité	0,04 dB	0,31 mV/Pa

	A	C	Z
L _{weq}	36,0 dB	47,7 dB	61,4 dB
L _{wpk}	94,9 dB	93,6 dB	108,5 dB
	2025-11-26 04:23:57	2025-11-26 04:23:57	2025-11-26 18:55:09
L _{wSmin}	31,9 dB	44,1 dB	53,5 dB
	2025-11-26 18:03:32	2025-11-26 16:18:19	2025-11-26 09:23:31
L _{wSmax}	71,9 dB	71,2 dB	98,3 dB
	2025-11-26 04:23:57	2025-11-26 04:23:57	2025-11-26 18:55:10
L _{wFmin}	31,0 dB	42,7 dB	48,4 dB
	2025-11-26 05:19:58	2025-11-26 16:34:18	2025-11-26 15:23:49
L _{wFmax}	79,5 dB	78,7 dB	104,7 dB
	2025-11-26 04:23:57	2025-11-26 04:23:57	2025-11-26 18:55:09
L _{wImin}	32,9 dB	45,5 dB	56,7 dB
	2025-11-26 15:08:30	2025-11-26 16:18:20	2025-11-26 04:23:12
L _{wImax}	83,0 dB	82,2 dB	107,2 dB
	2025-11-26 04:23:57	2025-11-26 04:23:57	2025-11-26 18:55:09

ω = pondération de la fréquence (A, C, Z)

LC _{eq} - LA _{eq}	11,7 dB		
LA _{1eq}	43,4 dB		
# de surcharges	0		
Durée de surcharge	00:00:00		
	A	C	Z
Sous la gamme du pic	50,0	50,0	62,0
Sous limite de portée	24,0	27,0	37,0
Plancher de bruit	17,0	18,0	25,0

Spartan 821 Sommaire

Informations générales sur l'instrument

	Modèle	Sériel
Mètre	Spartan 821	30013
Préampli	PRM821	
Microphone	377B02	
Identifiant de fichier unique	00A:0000753D:6927D66F:00001E8C	

Notes de mesure

Utilisateur	
Emplacement	Sailiivik Camp - Room D2-26
Description de l'emploi	
Note	

Mesure globale

Heure de départ	2025-11-27 04:41:19	
Heure d'arrêt	2025-11-27 18:19:29	
Durée de mesure	13:38:10.00	
Pré-étalonnage		
Date / heure	2025-11-27 04:39:29	
Niveau sonore	114,00 dB	
Sensibilité de l'instrument	-25,55 dB re 1V/Pa	52,78 mV/Pa
Post-étalonnage		
Date / heure	2025-11-27 18:28:50	
Niveau sonore	114,00 dB	
Sensibilité de l'instrument	-25,50 dB re 1V/Pa	53,09 mV/Pa
Delta de la sensibilité	0,05 dB	0,31 mV/Pa

	A	C	Z
L _{weq}	35,9 dB	48,4 dB	61,9 dB
L _{wpk}	95,4 dB	95,8 dB	107,2 dB
	2025-11-27 04:41:34	2025-11-27 04:41:34	2025-11-27 18:19:16
L _{ωSmin}	31,8 dB	44,2 dB	53,4 dB
	2025-11-27 16:44:18	2025-11-27 06:00:41	2025-11-27 12:28:03
L _{ωSmax}	71,9 dB	73,0 dB	97,1 dB
	2025-11-27 04:41:34	2025-11-27 04:41:34	2025-11-27 18:19:16
L _{ωFmin}	30,9 dB	42,8 dB	48,8 dB
	2025-11-27 12:35:50	2025-11-27 06:00:41	2025-11-27 13:00:41
L _{ωFmax}	79,6 dB	80,1 dB	103,5 dB
	2025-11-27 04:41:34	2025-11-27 04:41:34	2025-11-27 18:19:16
L _{ωlmin}	32,7 dB	45,8 dB	57,3 dB
	2025-11-27 16:44:30	2025-11-27 06:00:41	2025-11-27 15:29:07
L _{ωlmax}	83,2 dB	83,1 dB	106,0 dB
	2025-11-27 04:41:34	2025-11-27 04:41:34	2025-11-27 18:19:16

ω = pondération de la fréquence (A, C, Z)

LC _{eq} - LA _{eq}	12,4 dB		
LA _{eq}	43,6 dB		
# de surcharges	0		
Durée de surcharge	00:00:00		
	A	C	Z
Sous la gamme du pic	50,0	50,0	62,0
Sous limite de portée	24,0	27,0	37,0
Plancher de bruit	17,0	18,0	25,0

Spartan 821 Sommaire

Informations générales sur l'instrument

	Modèle	Sériel
Mètre	Spartan 821	30013
Préampli	PRM821	
Microphone	377B02	
Identifiant de fichier unique	00753D:692D139D:00002082	

Notes de mesure

Utilisateur	
Emplacement	Port site complex - Room BD-18
Description de l'emploi	
Note	

Mesure globale

Heure de départ	2025-12-01 04:03:41	
Heure d'arrêt	2025-12-01 19:31:12	
Durée de mesure	15:27:31.00	
Pré-étalonnage		
Date / heure	2025-12-01 03:52:32	
Niveau sonore	114,00 dB	
Sensibilité de l'instrument	-25,46 dB re 1V/Pa	53,33 mV/Pa
Post-étalonnage		
Date / heure	2025-12-01 19:35:47	
Niveau sonore	114,00 dB	
Sensibilité de l'instrument	-25,50 dB re 1V/Pa	53,09 mV/Pa
Delta de la sensibilité	-0,04 dB	-0,24 mV/Pa

	A	C	Z
L _{weq}	40,3 dB	53,9 dB	71,1 dB
L _{wpk}	90,7 dB	92,9 dB	105,1 dB
	2025-12-01 04:20:01	2025-12-01 04:20:01	2025-12-01 04:45:27
L _{wSmin}	22,7 dB	42,1 dB	47,2 dB
	2025-12-01 08:30:04	2025-12-01 09:13:05	2025-12-01 09:16:29
L _{wSmax}	66,3 dB	72,0 dB	96,0 dB
	2025-12-01 04:20:02	2025-12-01 19:31:01	2025-12-01 04:45:28
L _{wFmin}	21,7 dB	39,6 dB	43,9 dB
	2025-12-01 08:39:56	2025-12-01 09:13:02	2025-12-01 09:20:53
L _{wFmax}	74,3 dB	80,0 dB	101,9 dB
	2025-12-01 04:20:02	2025-12-01 19:31:01	2025-12-01 04:45:28
L _{wImin}	23,8 dB	44,3 dB	50,1 dB
	2025-12-01 08:30:04	2025-12-01 08:47:18	2025-12-01 09:12:37
L _{wImax}	78,2 dB	83,9 dB	104,1 dB
	2025-12-01 04:20:02	2025-12-01 19:31:01	2025-12-01 04:45:28

ω = pondération de la fréquence (A, C, Z)

LC _{eq} - LA _{eq}	13,6 dB		
LA _{1eq}	42,7 dB		
# de surcharges	0		
Durée de surcharge	00:00:00		
	A	C	Z
Sous la gamme du pic	50,0	50,0	62,0
Sous limite de portée	24,0	27,0	37,0
Plancher de bruit	17,0	18,0	25,0

Spartan 821 Sommaire

Informations générales sur l'instrument

	Modèle	Sériel
Mètre	Spartan 821	30013
Préampli	PRM821	
Microphone	377B02	
Identifiant de fichier unique	J00753D:692AFEFC:00001F33	

Notes de mesure

Utilisateur	
Emplacement	Port site complex - Room BA-07
Description de l'emploi	
Note	

Mesure globale

Heure de départ	2025-11-29 14:11:08	
Heure d'arrêt	2025-11-30 04:02:01	
Durée de mesure	13:50:53.00	
Pré-étalonnage		
Date / heure	2025-11-29 14:00:47	
Niveau sonore	114,00 dB	
Sensibilité de l'instrument	-25,54 dB re 1V/Pa	52,84 mV/Pa
Post-étalonnage		
Date / heure	2025-11-30 04:05:35	
Niveau sonore	114,00 dB	
Sensibilité de l'instrument	-25,50 dB re 1V/Pa	53,09 mV/Pa
Delta de la sensibilité	0,05 dB	0,25 mV/Pa

	A	C	Z
L _{weq}	43,0 dB	58,8 dB	76,3 dB
L _{wpk}	91,4 dB	91,1 dB	108,3 dB
	2025-11-29 14:11:28	2025-11-29 14:11:28	2025-11-30 04:01:42
L _{wSmin}	27,0 dB	44,2 dB	48,2 dB
	2025-11-29 14:40:48	2025-11-29 16:39:46	2025-11-29 15:36:09
L _{wSmax}	68,8 dB	73,1 dB	100,3 dB
	2025-11-29 14:11:28	2025-11-29 14:11:28	2025-11-30 04:01:42
L _{wFmin}	26,3 dB	42,2 dB	46,1 dB
	2025-11-29 19:19:47	2025-11-29 16:39:46	2025-11-29 15:36:05
L _{wFmax}	76,3 dB	77,5 dB	105,5 dB
	2025-11-29 14:11:28	2025-11-29 14:11:28	2025-11-30 04:01:42
L _{wImin}	28,0 dB	46,6 dB	50,7 dB
	2025-11-29 15:35:17	2025-11-29 20:33:49	2025-11-29 15:34:28
L _{wImax}	79,7 dB	79,9 dB	107,3 dB
	2025-11-29 14:11:28	2025-11-29 14:11:28	2025-11-30 04:01:42

ω = pondération de la fréquence (A, C, Z)

LC _{eq} - LA _{eq}	15,8 dB		
LA _{1eq}	44,9 dB		
# de surcharges	0		
Durée de surcharge	00:00:00		
	A	C	Z
Sous la gamme du pic	50,0	50,0	62,0
Sous limite de portée	24,0	27,0	37,0
Plancher de bruit	17,0	18,0	25,0

Spartan 821 Sommaire

Informations générales sur l'instrument

	Modèle	Sériel
Mètre	Spartan 821	30013
Préampli	PRM821	
Microphone	377B02	
Identifiant de fichier unique	I00753D:692BE8D0:00001FC7	

Notes de mesure

Utilisateur	
Emplacement	380-person camp - Room G-3
Description de l'emploi	
Note	

Mesure globale

Heure de départ	2025-11-30 06:48:48	
Heure d'arrêt	2025-11-30 19:00:05	
Durée de mesure	12:11:17.00	
Pré-étalonnage		
Date / heure	2025-11-30 06:47:38	
Niveau sonore	114,00 dB	
Sensibilité de l'instrument	-25,54 dB re 1V/Pa	52,84 mV/Pa
Post-étalonnage		
Date / heure	2025-11-30 19:15:28	
Niveau sonore	114,00 dB	
Sensibilité de l'instrument	-25,57 dB re 1V/Pa	52,66 mV/Pa
Delta de la sensibilité	-0,03 dB	-0,18 mV/Pa

	A	C	Z
L _{weq}	42,2 dB	65,7 dB	71,3 dB
L _{wpk}	83,0 dB	105,5 dB	110,6 dB
	2025-11-30 11:11:21	2025-11-30 11:11:21	2025-11-30 11:11:21
L _{wSmin}	40,1 dB	62,4 dB	62,7 dB
	2025-11-30 14:02:48	2025-11-30 07:34:36	2025-11-30 06:48:48
L _{wSmax}	62,3 dB	87,4 dB	92,3 dB
	2025-11-30 11:11:21	2025-11-30 11:11:21	2025-11-30 11:11:21
L _{wFmin}	38,9 dB	58,5 dB	62,7 dB
	2025-11-30 14:03:21	2025-11-30 08:46:10	2025-11-30 06:48:48
L _{wFmax}	69,4 dB	95,2 dB	100,1 dB
	2025-11-30 11:11:21	2025-11-30 11:11:21	2025-11-30 11:11:21
L _{wImin}	41,8 dB	64,7 dB	67,7 dB
	2025-11-30 14:03:18	2025-11-30 11:11:58	2025-11-30 06:48:48
L _{wImax}	72,5 dB	98,9 dB	104,0 dB
	2025-11-30 11:11:21	2025-11-30 11:11:21	2025-11-30 11:11:21

ω = pondération de la fréquence (A, C, Z)

LC _{eq} - LA _{eq}	23,5 dB		
LA _{1eq}	45,0 dB		
# de surcharges	0		
Durée de surcharge	00:00:00		
	A	C	Z
Sous la gamme du pic	50,0	50,0	62,0
Sous limite de portée	24,0	27,0	37,0
Plancher de bruit	17,0	18,0	25,0



APPENDIX D

Session reports whole-body vibration levels

HVM Informations générales

Numéro de série	0005086
Modèle	HVM200
Version du micrologiciel	5.1.1R2
HVM Nom de fichier	HVMD_251126_042253.hvm2
Utilisateur	
Emplacement	Sailiivik Camp - Room D2-26
Description de l'emploi	
Note	

Installer

Mode de fonctionnement	WholeBody
Calcul de la moyenne	60 seconds
Limite d'exposition	1,20
Action d'exposition	0,50
Méthode d'intégration	None
Accéléromètre sélectionné	ICP

	x	y	z
Sensibilité mV/(m/s ²)	10,480000	9,780000	10,590000
Pondération	Wd	Wd	Wk
Facteurs k	1,0000	1,0000	1,0000

Données globales

Heure de départ	2025-nov.-26 04:22:53
Durée de mesure (hh:mm:ss)	12:00:00

	x	y	z	Somme	Unités
a_{RMS}	0,0010	0,0013	0,0016	0,0023	m/s ²
MTVV	0,0025	0,0033	0,0199	0,0200	m/s ²
a_{PEAK}	0,0057	0,0088	0,0349	0,0349	m/s ²
Facteur de crête	5,7384	6,9595	21,6189	15,3065	
a_{MIN}	0,0005	0,0005	0,0010	0,0015	m/s ²
A(8)	0,0012	0,0015	0,0020	0,0020	m/s ²
A(8) action	>24	>24	>24	>24	heures
A(8) Exposition	>24	>24	>24	>24	heures
VDV	0,0191	0,0242	0,0435	0,0435	m/s ^{1.75}
Points d'exposition				0	Points

HVM Informations générales

Numéro de série	0005086
Modèle	HVM200
Version du micrologiciel	5.1.1R2
HVM Nom de fichier	HVMD_251127_044046.hvm2
Utilisateur	
Emplacement	Sailiivik Camp - Room D2-26
Description de l'emploi	
Note	

Installer

Mode de fonctionnement	WholeBody
Calcul de la moyenne	60 seconds
Limite d'exposition	1,20
Action d'exposition	0,50
Méthode d'intégration	None
Accéléromètre sélectionné	ICP

	x	y	z
Sensibilité mV/(m/s ²)	10,480000	9,780000	10,590000
Pondération	Wd	Wd	Wk
Facteurs k	1,0000	1,0000	1,0000

Données globales

Heure de départ	2025-nov.-27 04:40:46
Durée de mesure (hh:mm:ss)	13:38:36

	x	y	z	Somme	Unités
a_{RMS}	0,0011	0,0012	0,0018	0,0024	m/s ²
MTVV	0,0029	0,0033	0,0201	0,0202	m/s ²
a_{PEAK}	0,0141	0,0070	0,0473	0,0489	m/s ²
Facteur de crête	13,2534	5,6918	26,7663	20,4035	
a_{MIN}	0,0004	0,0005	0,0010	0,0014	m/s ²
A(8)	0,0014	0,0016	0,0023	0,0023	m/s ²
A(8) action	>24	>24	>24	>24	heures
A(8) Exposition	>24	>24	>24	>24	heures
VDV	0,0210	0,0242	0,0511	0,0511	m/s ^{1.75}
Points d'exposition				0	Points

HVM Informations générales

Numéro de série 0005086
Modèle HVM200
Version du micrologiciel 5.1.1R2
HVM Nom de fichier HVMD_251129_141049.hvm2

Utilisateur

Emplacement

Port site complex - Room BA-07

Description de l'emploi

Note

Installer

Mode de fonctionnement WholeBody
Calcul de la moyenne 60 seconds
Limite d'exposition 1,20
Action d'exposition 0,50
Méthode d'intégration None
Accéléromètre sélectionné ICP

	x	y	z
Sensibilité mV/(m/s ²)	10,480000	9,780000	10,590000
Pondération	Wd	Wd	Wk
Facteurs k	1,0000	1,0000	1,0000

Données globales

Heure de départ 2025-nov.-29 14:10:49
Durée de mesure (hh:mm:ss) 13:51:05

	x	y	z	Somme	Unités
a_{RMS}	0,0010	0,0013	0,0024	0,0029	m/s ²
MTVV	0,0024	0,0044	0,0191	0,0192	m/s ²
a_{PEAK}	0,0105	0,0100	0,0430	0,0430	m/s ²
Facteur de crête	10,4503	7,7568	17,6851	14,6798	
a_{MIN}	0,0003	0,0005	0,0007	0,0013	m/s ²
A(8)	0,0013	0,0017	0,0032	0,0032	m/s ²
A(8) action	>24	>24	>24	>24	heures
A(8) Exposition	>24	>24	>24	>24	heures
VDV	0,0200	0,0255	0,0636	0,0636	m/s ^{1.75}
Points d'exposition				0	Points

HVM Informations générales

Numéro de série 0005086
Modèle HVM200
Version du micrologiciel 5.1.1R2
HVM Nom de fichier HVMD_251130_064831.hvm2

Utilisateur

Emplacement

380-person camp - Room G-3

Description de l'emploi

Note

Installer

Mode de fonctionnement WholeBody
Calcul de la moyenne 60 seconds
Limite d'exposition 1,20
Action d'exposition 0,50
Méthode d'intégration None
Accéléromètre sélectionné ICP

	x	y	z
Sensibilité mV/(m/s ²)	10,480000	9,780000	10,590000
Pondération	Wd	Wd	Wk
Facteurs k	1,0000	1,0000	1,0000

Données globales

Heure de départ 2025-nov.-30 06:48:31
Durée de mesure (hh:mm:ss) 12:12:20

	x	y	z	Somme	Unités
a_{RMS}	0,0026	0,0015	0,0088	0,0093	m/s ²
MTVV	0,0114	0,0097	0,0391	0,0412	m/s ²
a_{PEAK}	0,0495	0,0404	0,2727	0,2728	m/s ²
Facteur de crête	18,8207	26,1446	31,0056	29,3089	
a_{MIN}	0,0012	0,0008	0,0045	0,0051	m/s ²
A(8)	0,0032	0,0019	0,0109	0,0109	m/s ²
A(8) action	>24	>24	>24	>24	heures
A(8) Exposition	>24	>24	>24	>24	heures
VDV	0,0516	0,0316	0,1757	0,1757	m/s ^{1.75}
Points d'exposition				0	Points

HVM Informations générales

Numéro de série 0005086
Modèle HVM200
Version du micrologiciel 5.1.1R2
HVM Nom de fichier HVMD_251201_040322.hvm2

Utilisateur

Emplacement

Port site complex - Room BD-18

Description de l'emploi

Note

Installer

Mode de fonctionnement WholeBody
Calcul de la moyenne 60 seconds
Limite d'exposition 1,20
Action d'exposition 0,50
Méthode d'intégration None
Accéléromètre sélectionné ICP

	x	y	z
Sensibilité mV/(m/s ²)	10,480000	9,780000	10,590000
Pondération	Wd	Wd	Wk
Facteurs k	1,0000	1,0000	1,0000

Données globales

Heure de départ 2025-déc.-01 04:03:22
Durée de mesure (hh:mm:ss) 15:27:53

	x	y	z	Somme	Unités
a_{RMS}	0,0010	0,0013	0,0015	0,0022	m/s ²
MTVV	0,0040	0,0044	0,0172	0,0176	m/s ²
a_{PEAK}	0,0117	0,0119	0,0741	0,0741	m/s ²
Facteur de crête	11,5144	9,0563	50,1701	33,3448	
a_{MIN}	0,0004	0,0005	0,0008	0,0013	m/s ²
A(8)	0,0014	0,0018	0,0021	0,0021	m/s ²
A(8) action	>24	>24	>24	>24	heures
A(8) Exposition	>24	>24	>24	>24	heures
VDV	0,0213	0,0276	0,0488	0,0488	m/s ^{1.75}
Points d'exposition				0	Points